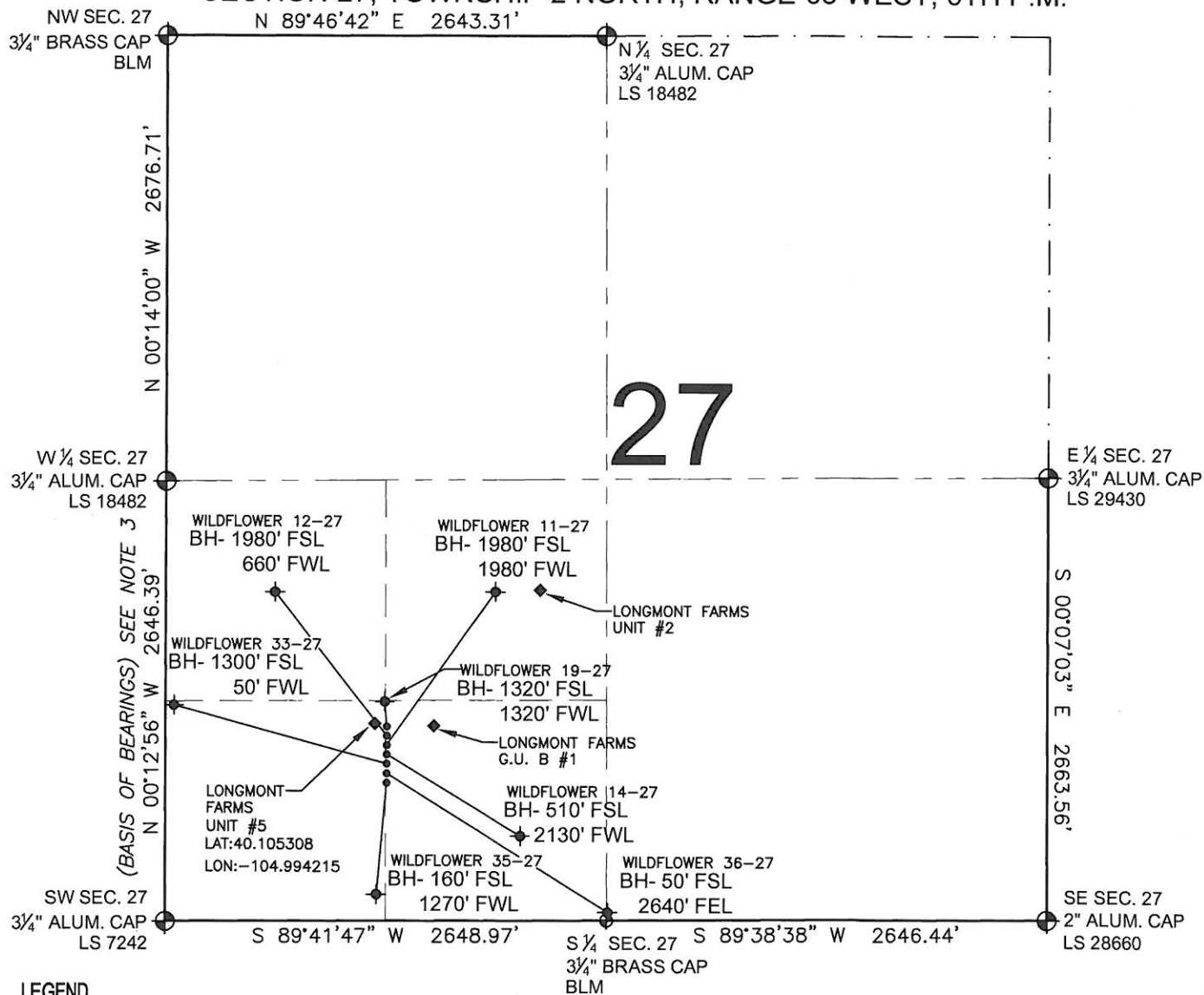


PAD DRAWING - WILDFLOWER 7 PAD

SECTION 27, TOWNSHIP 2 NORTH, RANGE 68 WEST, 6TH P.M.



LEGEND

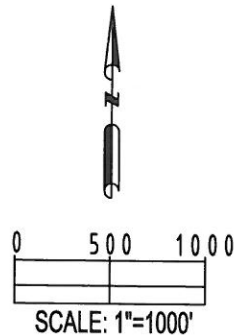
- = EXISTING MONUMENT
- ◆ = BOTTOM HOLE
- BH = BOTTOM HOLE
- = PROPOSED WELL
- ◆ = EXISTING WELL

NOTES:

- THIS SURVEY WAS DONE BY GPS METHODS AND CONFORMS TO THE MINIMUM STANDARDS SET BY THE C.O.G.C.C., RULE NO. 215
- ELEVATIONS SHOWN AT THE WELL HEAD, AS WELL AS HORIZONTAL CONTROL, ARE BASED ON GPS-RTK VALUES DERIVED FROM DOING 2-HOUR STATIC GPS SESSIONS AND REDUCTIONS USING O.P.U.S. SOLUTIONS.
VERTICAL = NAVD88; HORIZONTAL = NAD83/92
- THE BEARINGS SHOWN HEREON ARE BASED ON GPS OBSERVATIONS BETWEEN THE MONUMENTS SHOWN HEREON AS FOUND ON THE FIELD DATE BELOW.
- DISTANCES SHOWN ARE AT GROUND LEVEL, AS MEASURED IN THE FIELD, WITH TIES TO WELLS MEASURED AT A PERPENDICULAR TO SECTION LINES.

NOTES:

- WILDFLOWER 35-27 TO BE AT 1027' FSL, 1332' FWL. BOTTOM HOLE AT 160' FSL & 1270' FWL.
- WILDFLOWER 14-27 TO BE AT 1057' FSL, 1332' FWL. BOTTOM HOLE AT 510' FSL & 2130' FWL.
- WILDFLOWER 33-27 TO BE AT 1047' FSL, 1332' FWL. BOTTOM HOLE AT 1300' FSL & 50' FWL.
- WILDFLOWER 11-27 TO BE AT 1067' FSL, 1332' FWL. BOTTOM HOLE AT 1980' FSL & 1980' FWL.
- WILDFLOWER 19-27 TO BE AT 1087' FSL, 1332' FWL. BOTTOM HOLE AT 1320' FSL & 1320' FWL.
- WILDFLOWER 12-27 TO BE AT 1077' FSL, 1332' FWL. BOTTOM HOLE AT 1980' FSL & 660' FWL.
- WILDFLOWER 36-27 TO BE AT 1037' FSL, 1332' FWL. BOTTOM HOLE AT 50' FSL & 2640' FEL.
- LONGMONT FARMS UNIT #5 IS 1106' FSL, 1286' FWL.
- LONGMONT FARMS UNIT #2 IS 1994' FSL, 2138' FWL.
- LONGMONT FARMS G.U. B #1 IS 1103' FSL, 1599' FWL.



REVISIONS

INITIAL	DATE
SMF	12-28-09
SMF	06-15-10

PREPARED BY:

PFS

Petroleum Field Services, LLC
1801 W. 13th Ave.
Denver, CO 80204



KERR-MCGEE OIL & GAS ONSHORE LP

FIELD DATE:
12-11-09

DRAWING DATE:
12-17-09

BY:
SMF

PAD NAME:
WILDFLOWER 7 PAD

SURFACE LOCATION:

WELD COUNTY, COLORADO
SE 1/4 SW 1/4, SEC. 27, T2N, R68W