

**Exxon Mobil Corporation**

**North Piceance Unit 197-5A  
SEC. 5, T1S, R97W, 6th P.M.**



*Tri-State  
Land Surveying Inc.*  
(435) 781-2501  
180 North Vernal Ave. Vernal, Utah 84078

SCALE: 1" = 2,000'  
DRAWN BY: JAS  
DATE: 01-26-2009

**Legend**

Existing Road  
Proposed Access

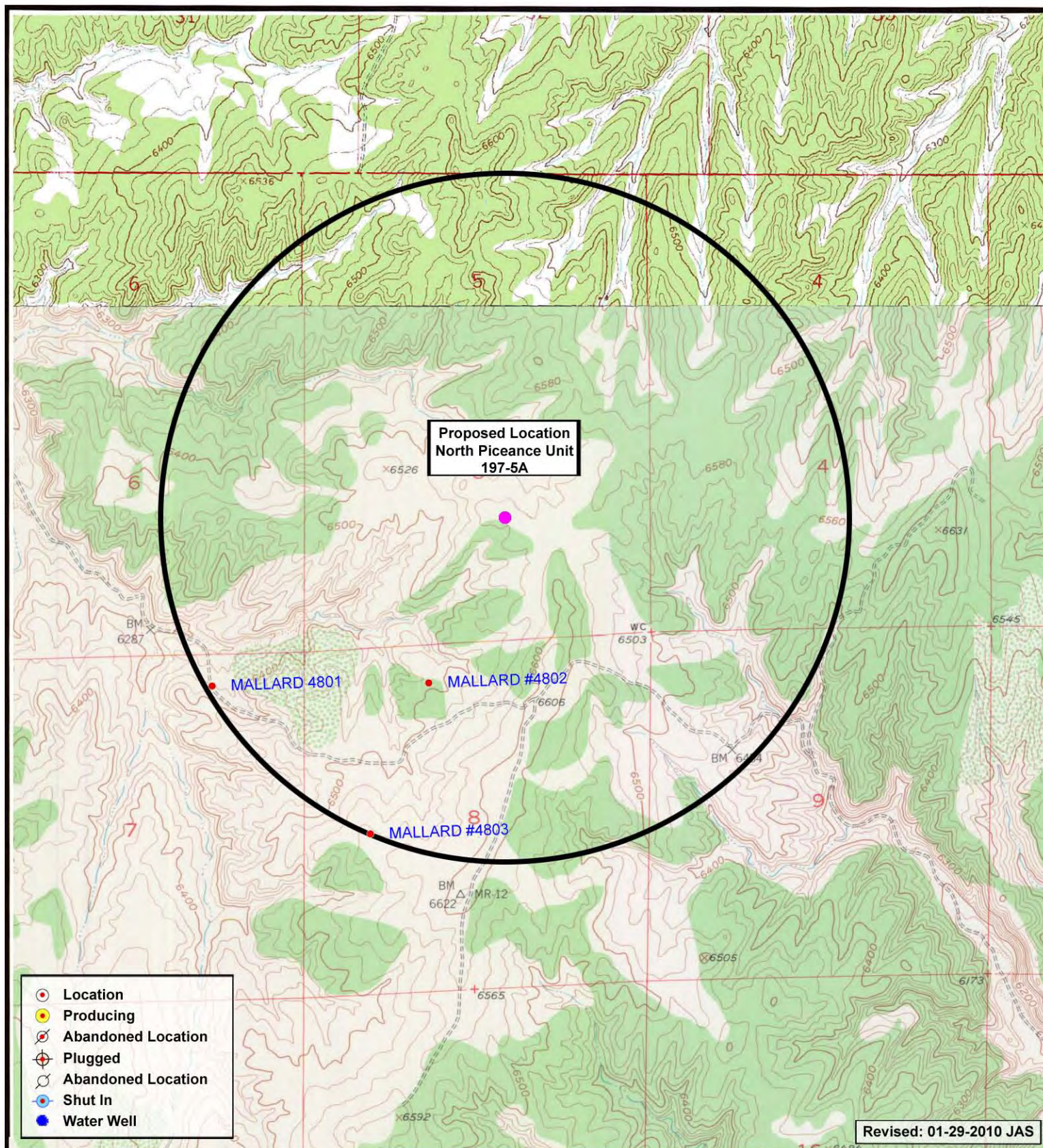
AERIAL MAP

**"B"**

SHEET

**8**





**Exxon Mobil Corporation**

**North Piceance Unit 197-5A  
SEC. 5, T1S, R97W, 6th P.M.**



**Tri-State  
Land Surveying Inc.**  
(435) 781-2501  
180 North Vernal Ave. Vernal, Utah 84078

SCALE: 1" = 2,000'  
DRAWN BY: JAS  
DATE: 05-06-2009

**Legend**

- Location
- One-Mile Radius

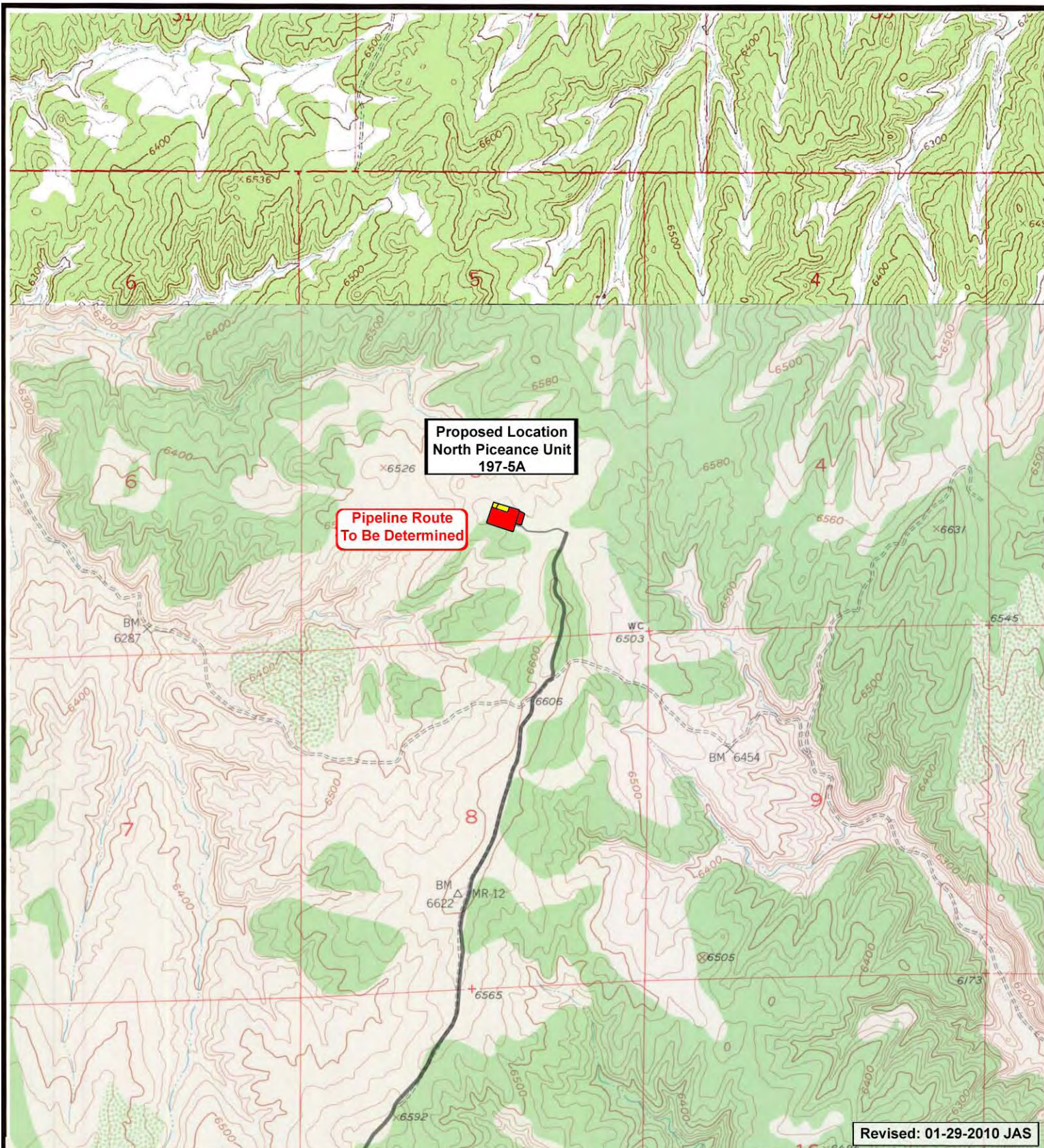
TOPOGRAPHIC MAP

**"C"**

SHEET

**9**





Revised: 01-29-2010 JAS

**Exxon Mobil Corporation**

**North Piceance Unit 197-5A  
SEC. 5, T1S, R97W, 6th P.M.**



**Tri-State  
Land Surveying Inc.**  
(435) 781-2501  
180 North Vernal Ave. Vernal, Utah 84078

SCALE: 1" = 2,000'  
DRAWN BY: JAS  
DATE: 05-06-2009

**Legend**

— Roads  
- - - Proposed Gas Line

TOPOGRAPHIC MAP

**"D"**

SHEET

**10**