

Exxon Mobil Corporation

**North Piceance Unit 197-5A
SEC. 5, T1S, R97W, 6th P.M.**



**Tri-State
Land Surveying Inc.**
(435) 781-2501
180 North Vernal Ave. Vernal, Utah 84078

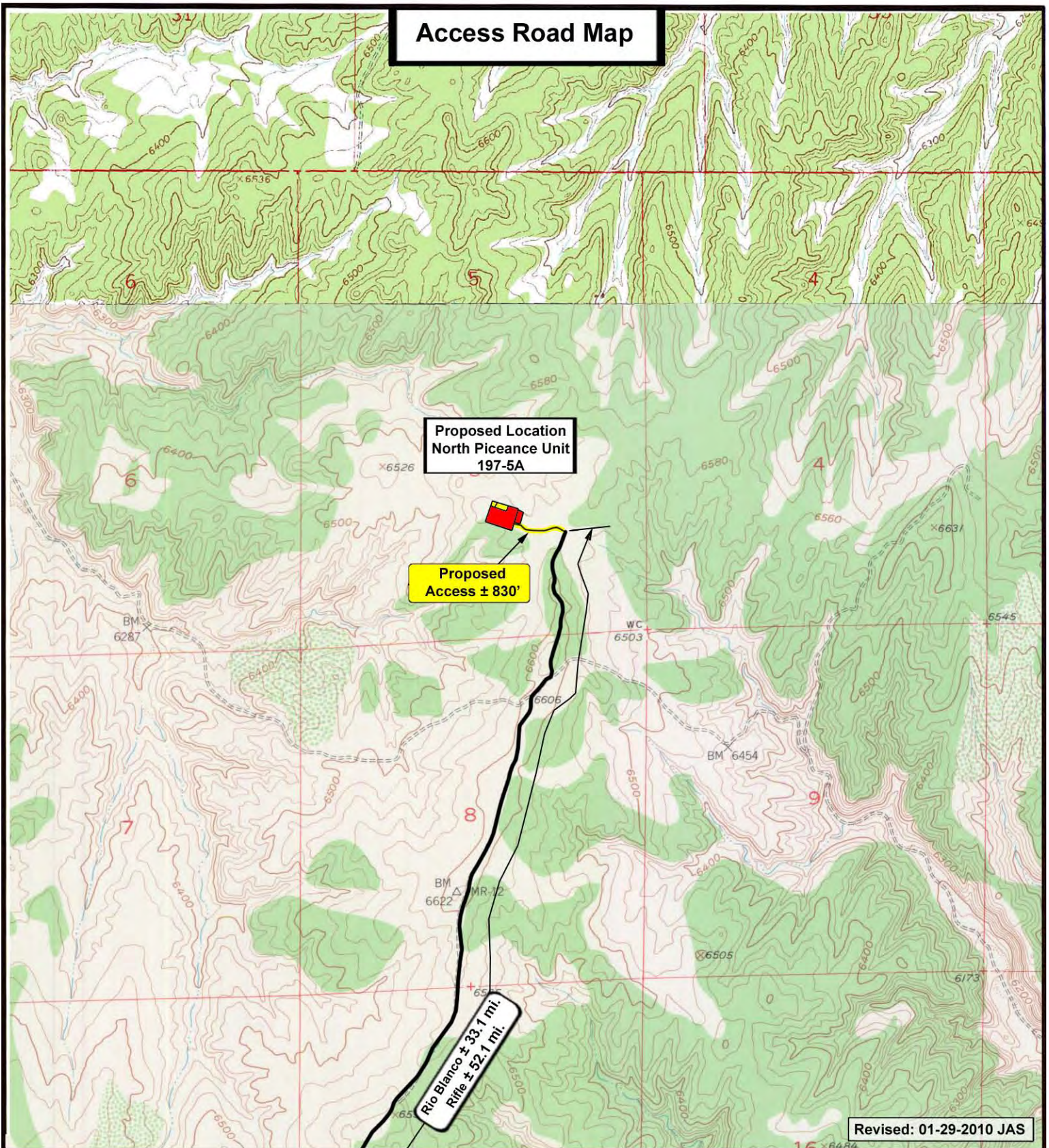
SCALE: 1 : 100,000
DRAWN BY: JAS
DATE: 05-06-2009

Legend

Existing Road
Proposed Access

TOPOGRAPHIC MAP
"A"
SHEET
6

Access Road Map



Revised: 01-29-2010 JAS

Exxon Mobil Corporation

**North Piceance Unit 197-5A
SEC. 5, T1S, R97W, 6th P.M.**



**Tri-State
Land Surveying Inc.**
(435) 781-2501
180 North Vernal Ave. Vernal, Utah 84078

SCALE: 1" = 2,000'
DRAWN BY: JAS
DATE: 05-06-2009

Legend

Existing Road
Proposed Access

TOPOGRAPHIC MAP

"B"

SHEET

7