

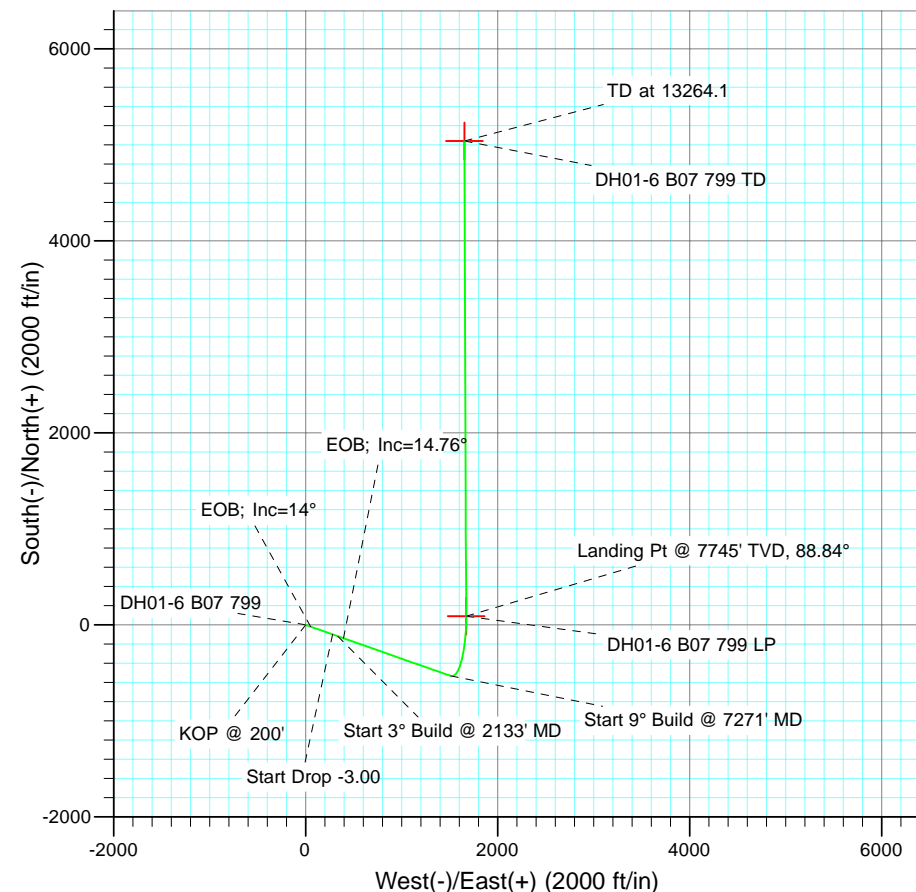
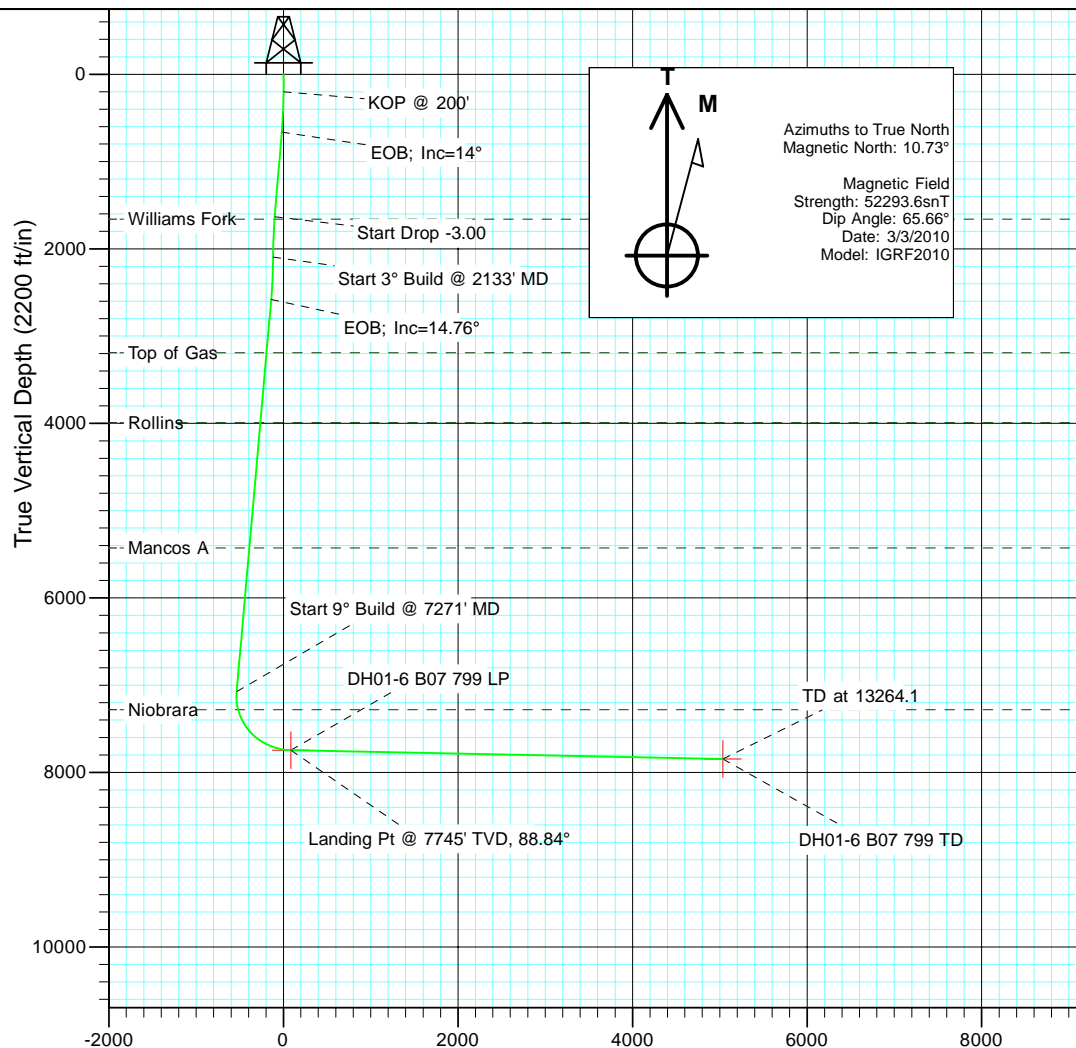


Project: Kimball Mtn  
Site: Section 7  
Well: DH01-6 B07 799  
Wellbore: Hz  
Design: Plan #4



#### SECTION DETAILS

Sec	MD	Inc	Azi	TVD	+N/-S	+E/-W	Dleg	TFace	Vsect	Target
1	0.0	0.00	0.00	0.0	0.0	0.0	0.00	0.00	0.0	
2	200.0	0.00	0.00	200.0	0.0	0.0	0.00	0.00	0.0	
3	666.7	14.00	109.36	662.0	-18.8	53.5	3.00	109.36	-19.0	
4	1666.7	14.00	109.36	1632.3	-99.0	281.8	0.00	0.00	-100.0	
5	2133.3	0.00	0.00	2094.4	-117.8	335.3	3.00	180.00	-119.0	
6	2625.4	14.76	109.36	2581.1	-138.7	394.8	3.00	109.36	-140.2	
7	7271.5	14.76	109.36	7073.7	-531.3	1511.7	0.00	0.00	-536.8	
8	8313.4	88.84	359.79	7745.0	91.1	1672.7	9.00	-109.26	85.0	DH01-6 B07 799 LP
9	13264.1	88.84	359.79	7845.0	5040.7	1654.3	0.00	0.00	5034.6	DH01-6 B07 799 TD



Plan #4 DH01-6 B07 799 1050xx; LR							
WELL @ 6670.0ft (Original Well Elev) North American Datum 1983 Well DH01-6 B07 799, True North							
Type	Target	Azimuth	Origin	Type	N/S	E/W	From TVD
User	No Target (Freehand)	359.79	Slot		0.0	0.0	0.0
Name	TVD	+N/-S	+E/-W	Latitude	Longitude		
DH01-6 B07 799 LP	7745.0	91.1	1672.7	39° 28' 5.02 N	108° 28' 33.86 W		
DH01-6 B07 799 TD	7845.0	5040.7	1654.3	39° 28' 53.94 N	108° 28' 34.09 W		

Vertical Section at 359.79° (2200 ft/in)

# Cathedral Energy Services

## Planning Report

<b>Database:</b>	EDM 5000.1 US Multi Users DB	<b>Local Co-ordinate Reference:</b>	Well DH01-6 B07 799
<b>Company:</b>	EnCana Oil & Gas (USA) Inc	<b>TVD Reference:</b>	WELL @ 6670.0ft (Original Well Elev)
<b>Project:</b>	Kimball Mtn	<b>MD Reference:</b>	WELL @ 6670.0ft (Original Well Elev)
<b>Site:</b>	Section 7	<b>North Reference:</b>	True
<b>Well:</b>	DH01-6 B07 799	<b>Survey Calculation Method:</b>	Minimum Curvature
<b>Wellbore:</b>	Hz		
<b>Design:</b>	Plan #4		

<b>Project</b>	Kimball Mtn		
<b>Map System:</b>	US State Plane 1983	<b>System Datum:</b>	Mean Sea Level
<b>Geo Datum:</b>	North American Datum 1983		
<b>Map Zone:</b>	Colorado Central Zone		

Site		Section 7			
Site Position:		Northing:	1,609,095.96 ft	Latitude:	39° 28' 4.09 N
From:	Lat/Long	Easting:	2,158,273.04 ft	Longitude:	108° 28' 55.50 W
Position Uncertainty:	0.0 ft	Slot Radius:	13.200 in	Grid Convergence:	-1.88 °

Well	DH01-6 B07 799					
Well Position	+N/-S	0.0 ft	Northing:	1,609,098.18 ft	Latitude:	39° 28' 4.12 N
	+E/-W	0.0 ft	Easting:	2,158,297.44 ft	Longitude:	108° 28' 55.19 W
Position Uncertainty		0.0 ft	Wellhead Elevation:	ft	Ground Level:	6,648.0 ft

<b>Wellbore</b>	Hz				
<b>Magnetics</b>	<b>Model Name</b>	<b>Sample Date</b>	<b>Declination</b>	<b>Dip Angle</b>	<b>Field Strength</b>
			(°)	(°)	(nT)
	IGRF2010	3/3/2010	10.73	65.66	52,294

<b>Design</b>	Plan #4			
<b>Audit Notes:</b>				
<b>Version:</b>	<b>Phase:</b>	PLAN	<b>Tie On Depth:</b>	0.0
<b>Vertical Section:</b>	<b>Depth From (TVD)</b>	<b>+N/-S</b>	<b>+E/-W</b>	<b>Direction</b>
	(ft)	(ft)	(ft)	(°)
	0.0	0.0	0.0	359.79

<b>Plan Sections</b>										
Measured Depth (ft)	Inclination (°)	Azimuth (°)	Vertical Depth (ft)	+N/-S (ft)	+E/-W (ft)	Dogleg Rate (°/100ft)	Build Rate (°/100ft)	Turn Rate (°/100ft)	TFO (°)	Target
0.0	0.00	0.00	0.0	0.0	0.0	0.00	0.00	0.00	0.00	
200.0	0.00	0.00	200.0	0.0	0.0	0.00	0.00	0.00	0.00	
666.7	14.00	109.36	662.0	-18.8	53.5	3.00	3.00	0.00	109.36	
1,666.7	14.00	109.36	1,632.3	-99.0	281.8	0.00	0.00	0.00	0.00	
2,133.3	0.00	0.00	2,094.4	-117.8	335.3	3.00	-3.00	0.00	180.00	
2,625.4	14.76	109.36	2,581.1	-138.7	394.8	3.00	3.00	0.00	109.36	
7,271.5	14.76	109.36	7,073.7	-531.3	1,511.7	0.00	0.00	0.00	0.00	
8,313.4	88.84	359.79	7,745.0	91.1	1,672.7	9.00	7.11	-10.52	-109.26	DH01-6 B07 799 LP
13,264.1	88.84	359.79	7,845.0	5,040.7	1,654.3	0.00	0.00	0.00	0.00	DH01-6 B07 799 TD

# Cathedral Energy Services

## Planning Report

<b>Database:</b>	EDM 5000.1 US Multi Users DB	<b>Local Co-ordinate Reference:</b>	Well DH01-6 B07 799
<b>Company:</b>	EnCana Oil & Gas (USA) Inc	<b>TVD Reference:</b>	WELL @ 6670.0ft (Original Well Elev)
<b>Project:</b>	Kimball Mtn	<b>MD Reference:</b>	WELL @ 6670.0ft (Original Well Elev)
<b>Site:</b>	Section 7	<b>North Reference:</b>	True
<b>Well:</b>	DH01-6 B07 799	<b>Survey Calculation Method:</b>	Minimum Curvature
<b>Wellbore:</b>	Hz		
<b>Design:</b>	Plan #4		

### Planned Survey

Measured Depth (ft)	Inclination (°)	Azimuth (°)	Vertical Depth (ft)	+N/-S (ft)	+E/-W (ft)	Vertical Section (ft)	Dogleg Rate (°/100ft)	Build Rate (°/100ft)	Comments / Formations
0.0	0.00	0.00	0.0	0.0	0.0	0.0	0.00	0.00	
100.0	0.00	0.00	100.0	0.0	0.0	0.0	0.00	0.00	
200.0	0.00	0.00	200.0	0.0	0.0	0.0	0.00	0.00	KOP @ 200'
300.0	3.00	109.36	300.0	-0.9	2.5	-0.9	3.00	3.00	
400.0	6.00	109.36	399.6	-3.5	9.9	-3.5	3.00	3.00	
500.0	9.00	109.36	498.8	-7.8	22.2	-7.9	3.00	3.00	
600.0	12.00	109.36	597.1	-13.8	39.4	-14.0	3.00	3.00	
666.7	14.00	109.36	662.0	-18.8	53.5	-19.0	3.00	3.00	EOB; Inc=14°
700.0	14.00	109.36	694.4	-21.5	61.1	-21.7	0.00	0.00	
800.0	14.00	109.36	791.4	-29.5	84.0	-29.8	0.00	0.00	
900.0	14.00	109.36	888.4	-37.5	106.8	-37.9	0.00	0.00	
1,000.0	14.00	109.36	985.5	-45.5	129.6	-46.0	0.00	0.00	
1,100.0	14.00	109.36	1,082.5	-53.6	152.4	-54.1	0.00	0.00	
1,200.0	14.00	109.36	1,179.5	-61.6	175.3	-62.2	0.00	0.00	
1,300.0	14.00	109.36	1,276.6	-69.6	198.1	-70.3	0.00	0.00	
1,400.0	14.00	109.36	1,373.6	-77.6	220.9	-78.4	0.00	0.00	
1,500.0	14.00	109.36	1,470.6	-85.6	243.7	-86.5	0.00	0.00	
1,600.0	14.00	109.36	1,567.6	-93.7	266.5	-94.6	0.00	0.00	
1,666.7	14.00	109.36	1,632.3	-99.0	281.8	-100.0	0.00	0.00	Start Drop -3.00
1,695.1	13.15	109.36	1,660.0	-101.2	288.1	-102.3	3.00	-3.00	Williams Fork
1,700.0	13.00	109.36	1,664.7	-101.6	289.1	-102.6	3.00	-3.00	
1,800.0	10.00	109.36	1,762.7	-108.2	307.9	-109.3	3.00	-3.00	
1,900.0	7.00	109.36	1,861.6	-113.1	321.9	-114.3	3.00	-3.00	
2,000.0	4.00	109.36	1,961.1	-116.3	330.9	-117.5	3.00	-3.00	
2,100.0	1.00	109.36	2,061.0	-117.7	335.0	-118.9	3.00	-3.00	
2,133.3	0.00	0.00	2,094.4	-117.8	335.3	-119.0	3.00	-3.00	Start 3° Build @ 2133' MD
2,200.0	2.00	109.36	2,161.0	-118.2	336.4	-119.4	3.00	3.00	
2,300.0	5.00	109.36	2,260.8	-120.2	342.1	-121.5	3.00	3.00	
2,400.0	8.00	109.36	2,360.2	-124.0	352.8	-125.3	3.00	3.00	
2,500.0	11.00	109.36	2,458.8	-129.4	368.4	-130.8	3.00	3.00	
2,600.0	14.00	109.36	2,556.4	-136.6	388.8	-138.0	3.00	3.00	
2,625.4	14.76	109.36	2,581.1	-138.7	394.8	-140.2	3.00	3.00	EOB; Inc=14.76°
2,700.0	14.76	109.36	2,653.1	-145.0	412.7	-146.5	0.00	0.00	
2,800.0	14.76	109.36	2,749.8	-153.5	436.7	-155.1	0.00	0.00	
2,900.0	14.76	109.36	2,846.5	-161.9	460.8	-163.6	0.00	0.00	
3,000.0	14.76	109.36	2,943.2	-170.4	484.8	-172.1	0.00	0.00	
3,100.0	14.76	109.36	3,039.9	-178.8	508.9	-180.7	0.00	0.00	
3,200.0	14.76	109.36	3,136.6	-187.3	532.9	-189.2	0.00	0.00	
3,256.2	14.76	109.36	3,191.0	-192.0	546.4	-194.0	0.00	0.00	Top of Gas
3,300.0	14.76	109.36	3,233.3	-195.7	556.9	-197.8	0.00	0.00	
3,400.0	14.76	109.36	3,330.0	-204.2	581.0	-206.3	0.00	0.00	
3,500.0	14.76	109.36	3,426.7	-212.6	605.0	-214.8	0.00	0.00	
3,600.0	14.76	109.36	3,523.4	-221.1	629.1	-223.4	0.00	0.00	
3,700.0	14.76	109.36	3,620.1	-229.5	653.1	-231.9	0.00	0.00	
3,800.0	14.76	109.36	3,716.8	-238.0	677.2	-240.4	0.00	0.00	
3,900.0	14.76	109.36	3,813.5	-246.4	701.2	-249.0	0.00	0.00	
4,000.0	14.76	109.36	3,910.2	-254.9	725.2	-257.5	0.00	0.00	
4,083.5	14.76	109.36	3,991.0	-261.9	745.3	-264.6	0.00	0.00	Rollins
4,100.0	14.76	109.36	4,006.9	-263.3	749.3	-266.1	0.00	0.00	
4,200.0	14.76	109.36	4,103.6	-271.8	773.3	-274.6	0.00	0.00	
4,300.0	14.76	109.36	4,200.3	-280.2	797.4	-283.1	0.00	0.00	
4,400.0	14.76	109.36	4,297.0	-288.7	821.4	-291.7	0.00	0.00	

# Cathedral Energy Services

## Planning Report

<b>Database:</b>	EDM 5000.1 US Multi Users DB	<b>Local Co-ordinate Reference:</b>	Well DH01-6 B07 799
<b>Company:</b>	EnCana Oil & Gas (USA) Inc	<b>TVD Reference:</b>	WELL @ 6670.0ft (Original Well Elev)
<b>Project:</b>	Kimball Mtn	<b>MD Reference:</b>	WELL @ 6670.0ft (Original Well Elev)
<b>Site:</b>	Section 7	<b>North Reference:</b>	True
<b>Well:</b>	DH01-6 B07 799	<b>Survey Calculation Method:</b>	Minimum Curvature
<b>Wellbore:</b>	Hz		
<b>Design:</b>	Plan #4		

### Planned Survey

Measured Depth (ft)	Inclination (°)	Azimuth (°)	Vertical Depth (ft)	+N/-S (ft)	+E/-W (ft)	Vertical Section (ft)	Dogleg Rate (°/100ft)	Build Rate (°/100ft)	Comments / Formations
4,500.0	14.76	109.36	4,393.7	-297.1	845.4	-300.2	0.00	0.00	
4,600.0	14.76	109.36	4,490.4	-305.6	869.5	-308.7	0.00	0.00	
4,700.0	14.76	109.36	4,587.1	-314.0	893.5	-317.3	0.00	0.00	
4,800.0	14.76	109.36	4,683.8	-322.5	917.6	-325.8	0.00	0.00	
4,900.0	14.76	109.36	4,780.5	-330.9	941.6	-334.4	0.00	0.00	
5,000.0	14.76	109.36	4,877.2	-339.4	965.6	-342.9	0.00	0.00	
5,100.0	14.76	109.36	4,973.9	-347.8	989.7	-351.4	0.00	0.00	
5,200.0	14.76	109.36	5,070.6	-356.3	1,013.7	-360.0	0.00	0.00	
5,300.0	14.76	109.36	5,167.3	-364.7	1,037.8	-368.5	0.00	0.00	
5,400.0	14.76	109.36	5,264.0	-373.2	1,061.8	-377.0	0.00	0.00	
5,500.0	14.76	109.36	5,360.7	-381.6	1,085.9	-385.6	0.00	0.00	
5,568.6	14.76	109.36	5,427.0	-387.4	1,102.3	-391.4	0.00	0.00	Mancos A
5,600.0	14.76	109.36	5,457.4	-390.0	1,109.9	-394.1	0.00	0.00	
5,700.0	14.76	109.36	5,554.1	-398.5	1,133.9	-402.7	0.00	0.00	
5,800.0	14.76	109.36	5,650.8	-406.9	1,158.0	-411.2	0.00	0.00	
5,900.0	14.76	109.36	5,747.5	-415.4	1,182.0	-419.7	0.00	0.00	
6,000.0	14.76	109.36	5,844.2	-423.8	1,206.1	-428.3	0.00	0.00	
6,100.0	14.76	109.36	5,940.9	-432.3	1,230.1	-436.8	0.00	0.00	
6,200.0	14.76	109.36	6,037.6	-440.7	1,254.1	-445.3	0.00	0.00	
6,300.0	14.76	109.36	6,134.3	-449.2	1,278.2	-453.9	0.00	0.00	
6,400.0	14.76	109.36	6,231.0	-457.6	1,302.2	-462.4	0.00	0.00	
6,500.0	14.76	109.36	6,327.7	-466.1	1,326.3	-471.0	0.00	0.00	
6,600.0	14.76	109.36	6,424.4	-474.5	1,350.3	-479.5	0.00	0.00	
6,700.0	14.76	109.36	6,521.1	-483.0	1,374.4	-488.0	0.00	0.00	
6,800.0	14.76	109.36	6,617.8	-491.4	1,398.4	-496.6	0.00	0.00	
6,900.0	14.76	109.36	6,714.5	-499.9	1,422.4	-505.1	0.00	0.00	
7,000.0	14.76	109.36	6,811.2	-508.3	1,446.5	-513.6	0.00	0.00	
7,100.0	14.76	109.36	6,907.9	-516.8	1,470.5	-522.2	0.00	0.00	
7,200.0	14.76	109.36	7,004.6	-525.2	1,494.6	-530.7	0.00	0.00	
7,271.5	14.76	109.36	7,073.7	-531.3	1,511.7	-536.8	0.00	0.00	Start 9° Build @ 7271' MD
7,300.0	14.12	99.39	7,101.3	-533.1	1,518.6	-538.6	9.00	-2.25	
7,400.0	15.38	63.82	7,198.2	-529.2	1,542.6	-534.8	9.00	1.26	
7,485.7	19.87	42.81	7,280.0	-513.5	1,562.7	-519.2	9.00	5.23	Niobrara
7,500.0	20.79	40.25	7,293.4	-509.7	1,566.0	-515.5	9.00	6.49	
7,600.0	28.05	27.22	7,384.4	-475.2	1,588.3	-481.0	9.00	7.26	
7,700.0	36.05	19.41	7,469.2	-426.5	1,608.8	-432.4	9.00	8.00	
7,800.0	44.40	14.16	7,545.5	-364.7	1,627.2	-370.6	9.00	8.35	
7,900.0	52.92	10.30	7,611.5	-291.3	1,642.9	-297.4	9.00	8.52	
8,000.0	61.54	7.22	7,665.6	-208.3	1,655.6	-214.4	9.00	8.62	
8,100.0	70.22	4.61	7,706.4	-117.6	1,665.0	-123.7	9.00	8.68	
8,200.0	78.94	2.28	7,732.9	-21.5	1,670.7	-27.6	9.00	8.71	
8,300.0	87.67	0.08	7,744.6	77.7	1,672.7	71.6	9.00	8.73	
8,313.4	88.84	359.79	7,745.0	91.1	1,672.7	85.0	9.00	8.74	Landing Pt @ 7745' TVD, 88.84° - DH01-6 B07
8,400.0	88.84	359.79	7,746.7	177.7	1,672.4	171.6	0.00	0.00	
8,500.0	88.84	359.79	7,748.8	277.7	1,672.0	271.5	0.00	0.00	
8,600.0	88.84	359.79	7,750.8	377.6	1,671.6	371.5	0.00	0.00	
8,700.0	88.84	359.79	7,752.8	477.6	1,671.3	471.5	0.00	0.00	
8,800.0	88.84	359.79	7,754.8	577.6	1,670.9	571.5	0.00	0.00	
8,900.0	88.84	359.79	7,756.8	677.6	1,670.5	671.5	0.00	0.00	
9,000.0	88.84	359.79	7,758.9	777.6	1,670.2	771.4	0.00	0.00	
9,100.0	88.84	359.79	7,760.9	877.5	1,669.8	871.4	0.00	0.00	
9,200.0	88.84	359.79	7,762.9	977.5	1,669.4	971.4	0.00	0.00	

# Cathedral Energy Services

## Planning Report

<b>Database:</b>	EDM 5000.1 US Multi Users DB	<b>Local Co-ordinate Reference:</b>	Well DH01-6 B07 799
<b>Company:</b>	EnCana Oil & Gas (USA) Inc	<b>TVD Reference:</b>	WELL @ 6670.0ft (Original Well Elev)
<b>Project:</b>	Kimball Mtn	<b>MD Reference:</b>	WELL @ 6670.0ft (Original Well Elev)
<b>Site:</b>	Section 7	<b>North Reference:</b>	True
<b>Well:</b>	DH01-6 B07 799	<b>Survey Calculation Method:</b>	Minimum Curvature
<b>Wellbore:</b>	Hz		
<b>Design:</b>	Plan #4		

### Planned Survey

Measured Depth (ft)	Inclination (°)	Azimuth (°)	Vertical Depth (ft)	+N/-S (ft)	+E/-W (ft)	Vertical Section (ft)	Dogleg Rate (°/100ft)	Build Rate (°/100ft)	Comments / Formations
9,300.0	88.84	359.79	7,764.9	1,077.5	1,669.0	1,071.4	0.00	0.00	
9,400.0	88.84	359.79	7,766.9	1,177.5	1,668.7	1,171.3	0.00	0.00	
9,500.0	88.84	359.79	7,769.0	1,277.5	1,668.3	1,271.3	0.00	0.00	
9,600.0	88.84	359.79	7,771.0	1,377.4	1,667.9	1,371.3	0.00	0.00	
9,700.0	88.84	359.79	7,773.0	1,477.4	1,667.6	1,471.3	0.00	0.00	
9,800.0	88.84	359.79	7,775.0	1,577.4	1,667.2	1,571.3	0.00	0.00	
9,900.0	88.84	359.79	7,777.0	1,677.4	1,666.8	1,671.2	0.00	0.00	
10,000.0	88.84	359.79	7,779.1	1,777.3	1,666.5	1,771.2	0.00	0.00	
10,100.0	88.84	359.79	7,781.1	1,877.3	1,666.1	1,871.2	0.00	0.00	
10,200.0	88.84	359.79	7,783.1	1,977.3	1,665.7	1,971.2	0.00	0.00	
10,300.0	88.84	359.79	7,785.1	2,077.3	1,665.3	2,071.2	0.00	0.00	
10,400.0	88.84	359.79	7,787.1	2,177.3	1,665.0	2,171.1	0.00	0.00	
10,500.0	88.84	359.79	7,789.2	2,277.2	1,664.6	2,271.1	0.00	0.00	
10,600.0	88.84	359.79	7,791.2	2,377.2	1,664.2	2,371.1	0.00	0.00	
10,700.0	88.84	359.79	7,793.2	2,477.2	1,663.9	2,471.1	0.00	0.00	
10,800.0	88.84	359.79	7,795.2	2,577.2	1,663.5	2,571.1	0.00	0.00	
10,900.0	88.84	359.79	7,797.2	2,677.2	1,663.1	2,671.0	0.00	0.00	
11,000.0	88.84	359.79	7,799.3	2,777.1	1,662.7	2,771.0	0.00	0.00	
11,100.0	88.84	359.79	7,801.3	2,877.1	1,662.4	2,871.0	0.00	0.00	
11,200.0	88.84	359.79	7,803.3	2,977.1	1,662.0	2,971.0	0.00	0.00	
11,300.0	88.84	359.79	7,805.3	3,077.1	1,661.6	3,071.0	0.00	0.00	
11,400.0	88.84	359.79	7,807.3	3,177.1	1,661.3	3,170.9	0.00	0.00	
11,500.0	88.84	359.79	7,809.4	3,277.0	1,660.9	3,270.9	0.00	0.00	
11,600.0	88.84	359.79	7,811.4	3,377.0	1,660.5	3,370.9	0.00	0.00	
11,700.0	88.84	359.79	7,813.4	3,477.0	1,660.1	3,470.9	0.00	0.00	
11,800.0	88.84	359.79	7,815.4	3,577.0	1,659.8	3,570.9	0.00	0.00	
11,900.0	88.84	359.79	7,817.4	3,676.9	1,659.4	3,670.8	0.00	0.00	
12,000.0	88.84	359.79	7,819.5	3,776.9	1,659.0	3,770.8	0.00	0.00	
12,100.0	88.84	359.79	7,821.5	3,876.9	1,658.7	3,870.8	0.00	0.00	
12,200.0	88.84	359.79	7,823.5	3,976.9	1,658.3	3,970.8	0.00	0.00	
12,300.0	88.84	359.79	7,825.5	4,076.9	1,657.9	4,070.8	0.00	0.00	
12,400.0	88.84	359.79	7,827.5	4,176.8	1,657.6	4,170.7	0.00	0.00	
12,500.0	88.84	359.79	7,829.6	4,276.8	1,657.2	4,270.7	0.00	0.00	
12,600.0	88.84	359.79	7,831.6	4,376.8	1,656.8	4,370.7	0.00	0.00	
12,700.0	88.84	359.79	7,833.6	4,476.8	1,656.4	4,470.7	0.00	0.00	
12,800.0	88.84	359.79	7,835.6	4,576.8	1,656.1	4,570.7	0.00	0.00	
12,900.0	88.84	359.79	7,837.6	4,676.7	1,655.7	4,670.6	0.00	0.00	
13,000.0	88.84	359.79	7,839.7	4,776.7	1,655.3	4,770.6	0.00	0.00	
13,100.0	88.84	359.79	7,841.7	4,876.7	1,655.0	4,870.6	0.00	0.00	
13,200.0	88.84	359.79	7,843.7	4,976.7	1,654.6	4,970.6	0.00	0.00	
13,264.1	88.84	359.79	7,845.0	5,040.7	1,654.3	5,034.6	0.00	0.00	TD at 13264.1 - DH01-6 B07 799 TD

# Cathedral Energy Services

## Planning Report

<b>Database:</b>	EDM 5000.1 US Multi Users DB	<b>Local Co-ordinate Reference:</b>	Well DH01-6 B07 799
<b>Company:</b>	EnCana Oil & Gas (USA) Inc	<b>TVD Reference:</b>	WELL @ 6670.0ft (Original Well Elev)
<b>Project:</b>	Kimball Mtn	<b>MD Reference:</b>	WELL @ 6670.0ft (Original Well Elev)
<b>Site:</b>	Section 7	<b>North Reference:</b>	True
<b>Well:</b>	DH01-6 B07 799	<b>Survey Calculation Method:</b>	Minimum Curvature
<b>Wellbore:</b>	Hz		
<b>Design:</b>	Plan #4		

Targets									
Target Name	Dip Angle	Dip Dir.	TVD	+N/-S	+E/-W	Northing	Easting	Latitude	Longitude
- hit/miss target	(°)	(°)	(ft)	(ft)	(ft)	(ft)	(ft)		
- Shape									
DH01-6 B07 799 TD	0.00	0.00	7,845.0	5,040.7	1,654.3	1,614,081.89	2,160,116.33	39° 28' 53.94 N	108° 28' 34.09 W
- plan hits target center									
- Point									
DH01-6 B07 799 LP	0.00	0.00	7,745.0	91.1	1,672.7	1,609,134.37	2,159,972.23	39° 28' 5.02 N	108° 28' 33.86 W
- plan hits target center									
- Point									

Formations						
Measured Depth	Vertical Depth	Name	Lithology	Dip	Dip Direction	
(ft)	(ft)			(°)	(°)	
1,695.1	1,660.0	Williams Fork		0.00		
3,256.2	3,191.0	Top of Gas		0.00		
4,083.5	3,991.0	Rollins		0.00		
5,568.6	5,427.0	Mancos A		0.00		
7,485.7	7,280.0	Niobrara		0.00		

Plan Annotations					
Measured Depth	Vertical Depth	Local Coordinates			
(ft)	(ft)	+N/-S	+E/-W	Comment	
(ft)	(ft)	(ft)	(ft)		
200.0	200.0	0.0	0.0	KOP @ 200'	
666.7	662.0	-18.8	53.5	EOB; Inc=14°	
1,666.7	1,632.3	-99.0	281.8	Start Drop -3.00	
2,133.3	2,094.4	-117.8	335.3	Start 3° Build @ 2133' MD	
2,625.4	2,581.1	-138.7	394.8	EOB; Inc=14.76°	
7,271.5	7,073.7	-531.3	1,511.7	Start 9° Build @ 7271' MD	
8,313.4	7,745.0	91.1	1,672.7	Landing Pt @ 7745' TVD, 88.84°	
13,264.1	7,845.0	5,040.7	1,654.3	TD at 13264.1	