

WEST - 5313.66' (G.L.O.)

Encana OIL & GAS (USA) INC.

Well location, KIMBALL MTN. DH01-6 B07 799, located as shown in the NW 1/4 NE 1/4 of Section 7, T7S, R99W, 6th P.M., Garfield County, Colorado.

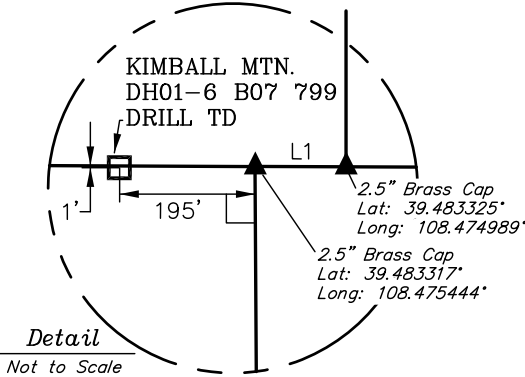
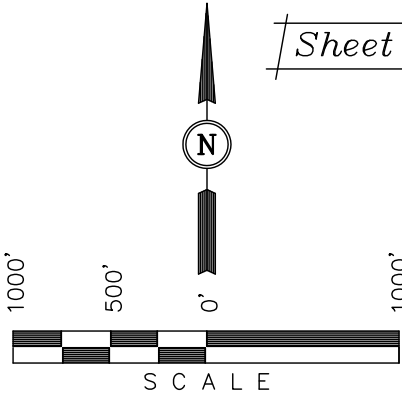
BASIS OF ELEVATION

SPOT ELEVATION AT THE NORTHWEST CORNER OF SECTION 30, T5S, R95W, 6th P.M. TAKEN FROM THE FORKED GULCH QUADRANGLE, COLORADO, GARFIELD COUNTY, 7.5 MINUTE SERIES (TOPOGRAPHICAL MAP) PUBLISHED BY THE UNITED STATES DEPARTMENT OF THE INTERIOR, GEOLOGICAL SURVEY. SAID ELEVATION IS MARKED AS BEING 5966 FEET.

BASIS OF BEARINGS

BASIS OF BEARINGS IS A G.P.S. OBSERVATION.

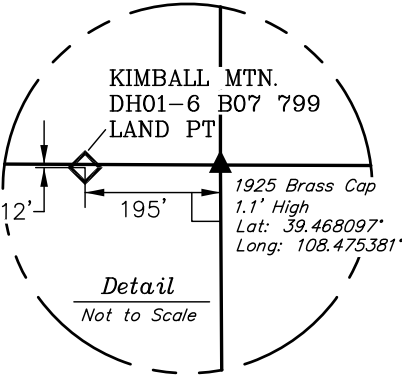
Sheet 1a of 11



T7S, R99W, 6th P.M.

LEGEND:

- └─┘ = 90° SYMBOL
- = PROPOSED WELL HEAD.
- ▲ = SECTION CORNERS LOCATED.



NOTE:  
SEE LOCATION DRAWING FOR  
EXISTING IMPROVEMENTS WITHIN  
400' OF THE PROPOSED WELL  
DISTURBANCE.

CERTIFICATE

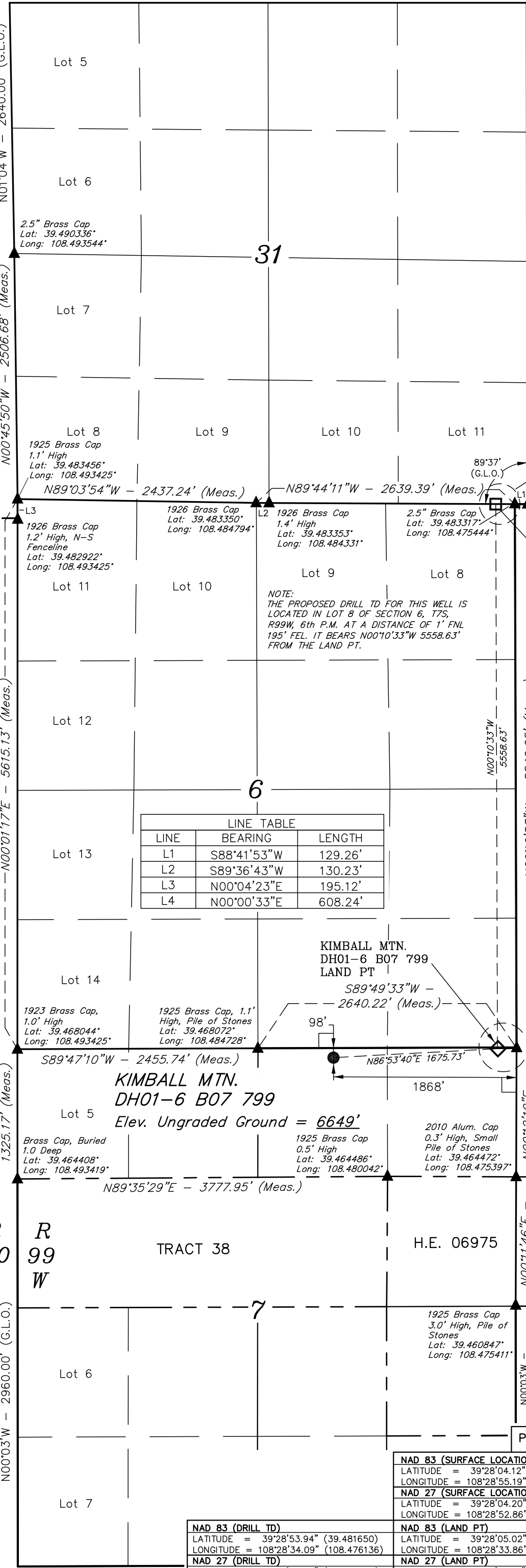
THIS IS TO CERTIFY THAT THE ABOVE PLAT WAS PREPARED FROM FIELD NOTES OF ACTUAL SURVEYS MADE BY ME OR UNDER MY SUPERVISION AND THAT THE SAME ARE TRUE AND CORRECT TO THE BEST OF MY KNOWLEDGE AND BELIEF.

Revised: 07-27-10 D.R.B.  
Revised: 07-21-10 D.R.B.  
Revised: 07-08-10 D.R.B.  
Revised: 03-19-10 D.R.B.

REGISTERED LAND SURVEYOR  
REGISTRATION NO. 17492  
STATE OF COLORADO

UINTAH ENGINEERING & LAND SURVEYING  
85 SOUTH 200 EAST - VERNAL, UTAH 84078  
(435) 789-1017

SCALE 1" = 1000'	DATE SURVEYED: 03-02-10	DATE DRAWN: 03-11-10
PARTY G.O. B.B. D.R.B.	REFERENCES G.L.O. PLAT	
WEATHER COLD	FILE Encana OIL & GAS (USA) INC.	



NAD 83 (SURFACE LOCATION)	NAD 83 (LAND PT)
LATITUDE = 39°28'04.12" (39.467811)	LATITUDE = 39°28'05.02" (39.468061)
LONGITUDE = 108°28'55.19" (108.481997)	LONGITUDE = 108°28'33.86" (108.476072)
NAD 27 (SURFACE LOCATION)	NAD 27 (LAND PT)
LATITUDE = 39°28'04.20" (39.467833)	LATITUDE = 39°28'05.10" (39.468083)
LONGITUDE = 108°28'52.86" (108.481350)	LONGITUDE = 108°28'31.53" (108.475425)
NAD 83 (DRILL TD)	NAD 83 (DRILL TD)
LATITUDE = 39°28'53.94" (39.481650)	LATITUDE = 39°29'00.03" (39.483342)
LONGITUDE = 108°28'34.09" (108.476136)	LONGITUDE = 108°28'31.76" (108.475489)

PDOP = 1.9