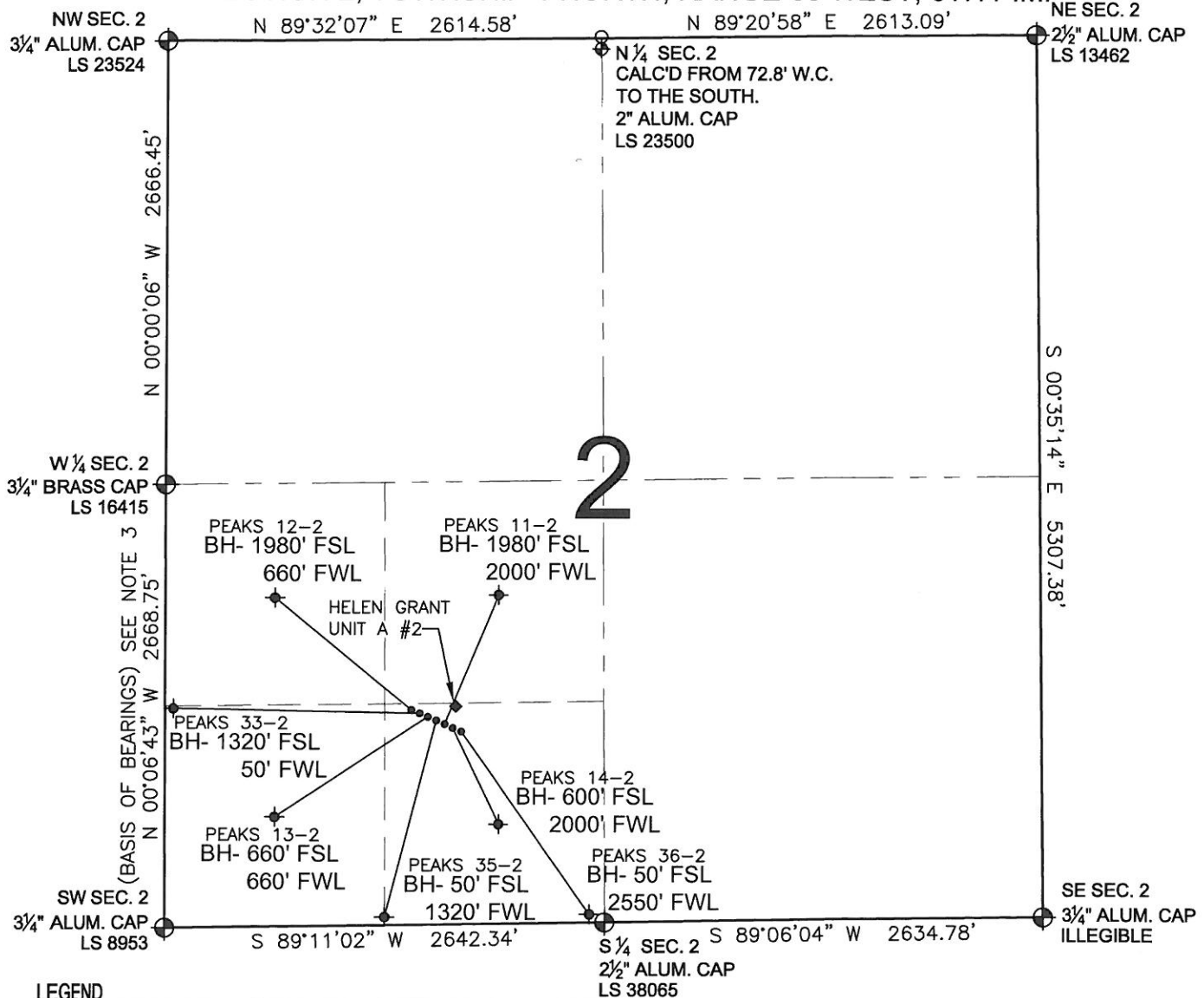


PAD DRAWING - PEAKS 7 PAD

SECTION 2, TOWNSHIP 1 NORTH, RANGE 68 WEST, 6TH P.M.



LEGEND

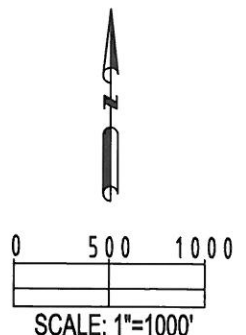
- ⊕ = EXISTING MONUMENT
- ⬤ = PROPOSED WELL
- ⬥ = BOTTOM HOLE
- ⬧ = EXISTING WELL
- BH= BOTTOM HOLE

NOTES:

- THIS SURVEY WAS DONE BY GPS METHODS AND CONFORMS TO THE MINIMUM STANDARDS SET BY THE C.O.G.C.C., RULE NO. 215
- ELEVATIONS SHOWN AT THE WELL HEAD, AS WELL AS HORIZONTAL CONTROL, ARE BASED ON GPS-RTK VALUES DERIVED FROM DOING 2-HOUR STATIC GPS SESSIONS AND REDUCTIONS USING O.P.U.S. SOLUTIONS.
VERTICAL = NAVD88; HORIZONTAL = NAD83/92
- THE BEARINGS SHOWN HEREON ARE BASED ON GPS OBSERVATIONS BETWEEN THE MONUMENTS SHOWN HEREON AS FOUND ON THE FIELD DATE BELOW.
- DISTANCES SHOWN ARE AT GROUND LEVEL, AS MEASURED IN THE FIELD, WITH TIES TO WELLS MEASURED AT A PERPENDICULAR TO SECTION LINES.

NOTES:

PEAKS 36-2 TO BE AT 1272' FSL, 1647' FWL.
 BOTTOM HOLE AT 50' FSL & 2550' FWL.
 PEAKS 14-2 TO BE AT 1276' FSL, 1638' FWL.
 BOTTOM HOLE AT 600' FSL & 2000' FWL.
 PEAKS 11-2 TO BE AT 1280' FSL, 1629' FWL.
 BOTTOM HOLE AT 1980' FSL & 2000' FWL.
 PEAKS 35-2 TO BE AT 1284' FSL, 1620' FWL.
 BOTTOM HOLE AT 50' FSL & 1320' FWL.
 PEAKS 13-2 TO BE AT 1289' FSL, 1611' FWL.
 BOTTOM HOLE AT 660' FSL & 660' FWL.
 PEAKS 33-2 TO BE AT 1293' FSL, 1601' FWL.
 BOTTOM HOLE AT 1320' FSL & 50' FWL.
 PEAKS 12-2 TO BE AT 1297' FSL, 1592' FWL.
 BOTTOM HOLE AT 1980' FSL & 660' FWL.
 HELEN GRANT UNIT A #2 IS 1327' FSL, 1643' FWL.



REVISIONS

INITIAL	DATE
SMF	06-23-10

PREPARED BY:

PFS

Petroleum Field Services, LLC
 1801 W. 13th Ave.
 Denver, CO 80204



KERR-MCGEE OIL & GAS ONSHORE LP

FIELD DATE:

04-12-10

DRAWING DATE:

04-16-10

BY:

SMF

PAD NAME:

PEAKS 7 PAD

SURFACE LOCATION:

WELD COUNTY, COLORADO
 SE 1/4 SW 1/4, SEC. 2, T1N, R68W