

## VICINITY MAP

BDU 25-1-199 PAD

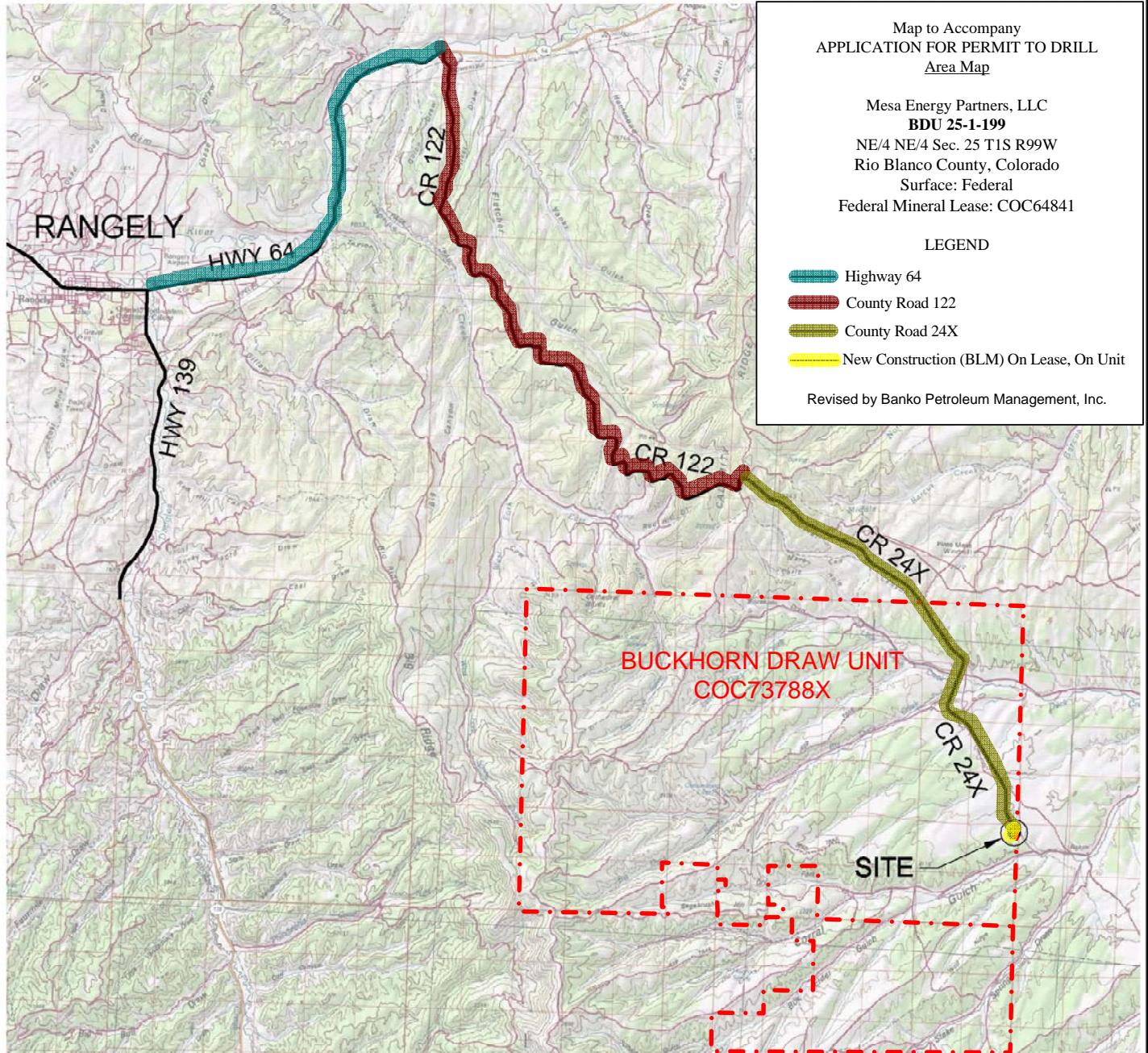
Map to Accompany  
APPLICATION FOR PERMIT TO DRILL  
Area Map

Mesa Energy Partners, LLC  
**BDU 25-1-199**  
NE/4 NE/4 Sec. 25 T1S R99W  
Rio Blanco County, Colorado  
Surface: Federal  
Federal Mineral Lease: COC64841

### LEGEND

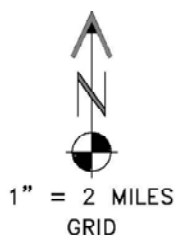
- Highway 64
- County Road 122
- County Road 24X
- New Construction (BLM) On Lease, On Unit

Revised by Banko Petroleum Management, Inc.



### DRIVING DIRECTIONS:

MP 0.0 - Intersection of Highway 64 & Highway 139, East on Highway 64  
MP 9.1 - Right on CR 122; South along CR 122  
MP 25.5 - Intersection CR 122 & CR 24X; Continue straight on CR 24X  
MP 33.3 - Right on access onto BDU 25-1-199 Pad



10 OF 12 6/23/10



**MESA ENERGY PARTNERS, LLC**  
**BDU 25-1-199**

**NE1/4 NE1/4 SEC. 25 T1S R99W**  
**6th PM RIO BLANCO COUNTY COLORADO**