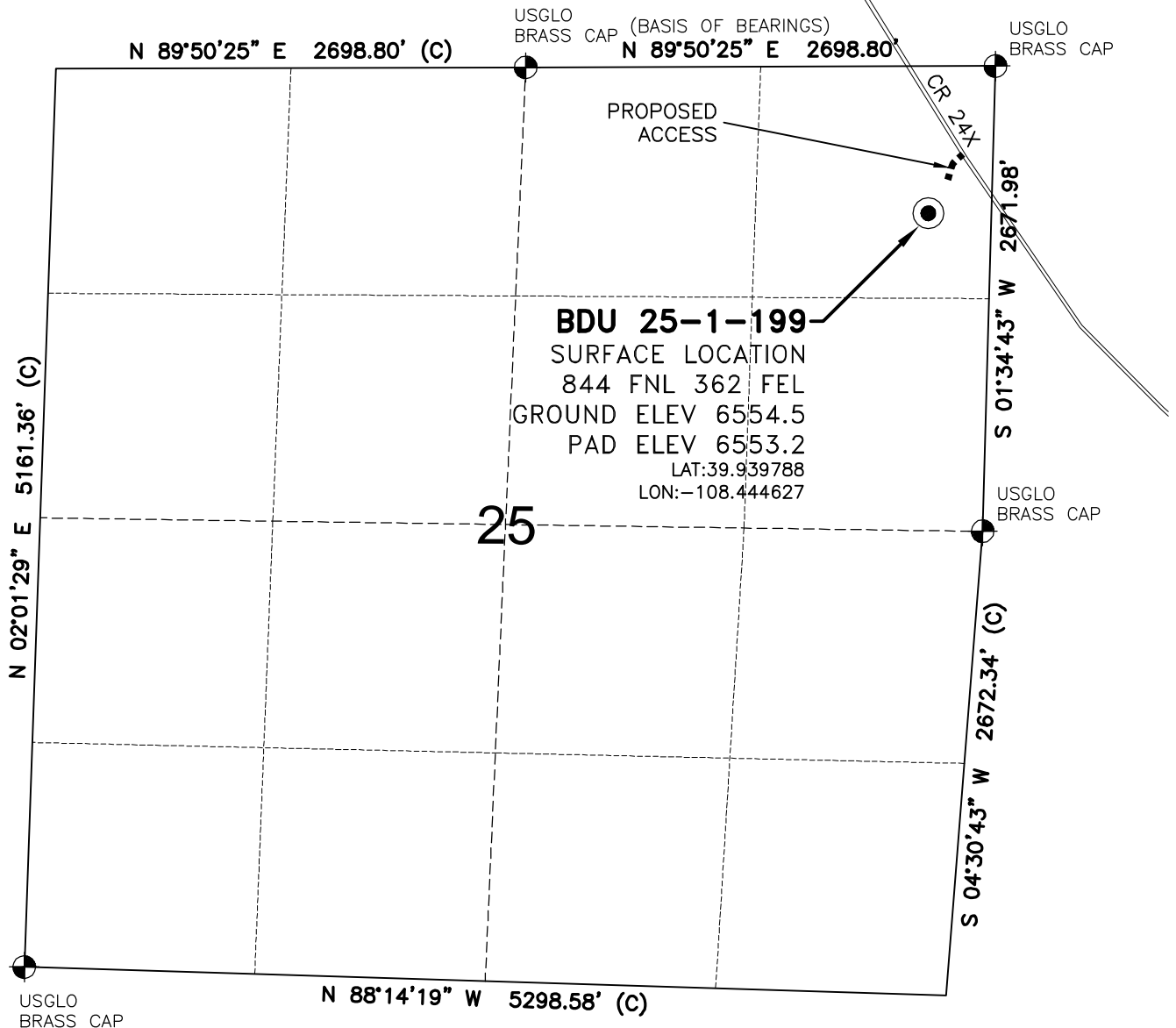


WELL LOCATION MAP

BDU 25-1-199 PAD



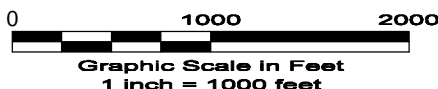
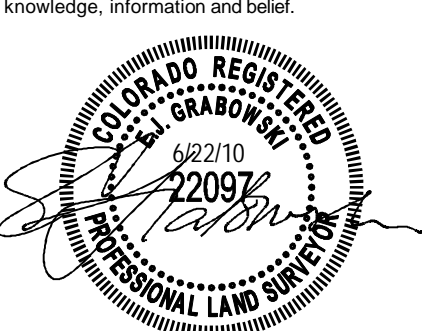
SURVEYOR'S STATEMENT

The undersigned hereby states that the well location shown hereon was staked on the ground based on existing monumentation and/or physical evidence found in the field and is correct to the best of my knowledge, information and belief.

NOTES

- 1.) Horizontal and vertical datum, based on NGS control point "KM 0280" with an elevation of 6434. NAVD 1988.
 - 2.) All directions, distances, and dimensions shown hereon are based on coordinates from the "Colorado coordinate system of 1983 north zone" (article 52 of title 38, C.R.S.).
 - 3.) All section line dimensions shown hereon are based on field measurements of existing monuments and/or physical evidence found in the field unless otherwise indicated. Refer to land survey plats deposited in Rio Blanco County & BLM Survey.
 - 4.) Physical features shown hereon are for graphical representation only.
 - 5.) See Form 2A for visible improvements within 400' of wellhead.
 - 6.) Distances to nearest section lines are measured perpendicularly.
 - 7.) This is not a land survey nor land survey plat.
 - 8.) Date of Survey 5/26/10 Date of Drawing 6/22/10. REV 1
- PDOP Reading: 2.4 Instrument Operator: EJG

1 OF 12 6/23/10



GEO SURV

LAND SURVEYING AND MAPPING
LAFAYETTE - WINTER PARK
Ph 303 666 0379 Fx 303 665 6320

MESA ENERGY PARTNERS, LLC
BDU 25-1-199

NE1/4 NE1/4 SEC. 25 T1S R99W
6th PM RIO BLANCO COUNTY COLORADO