

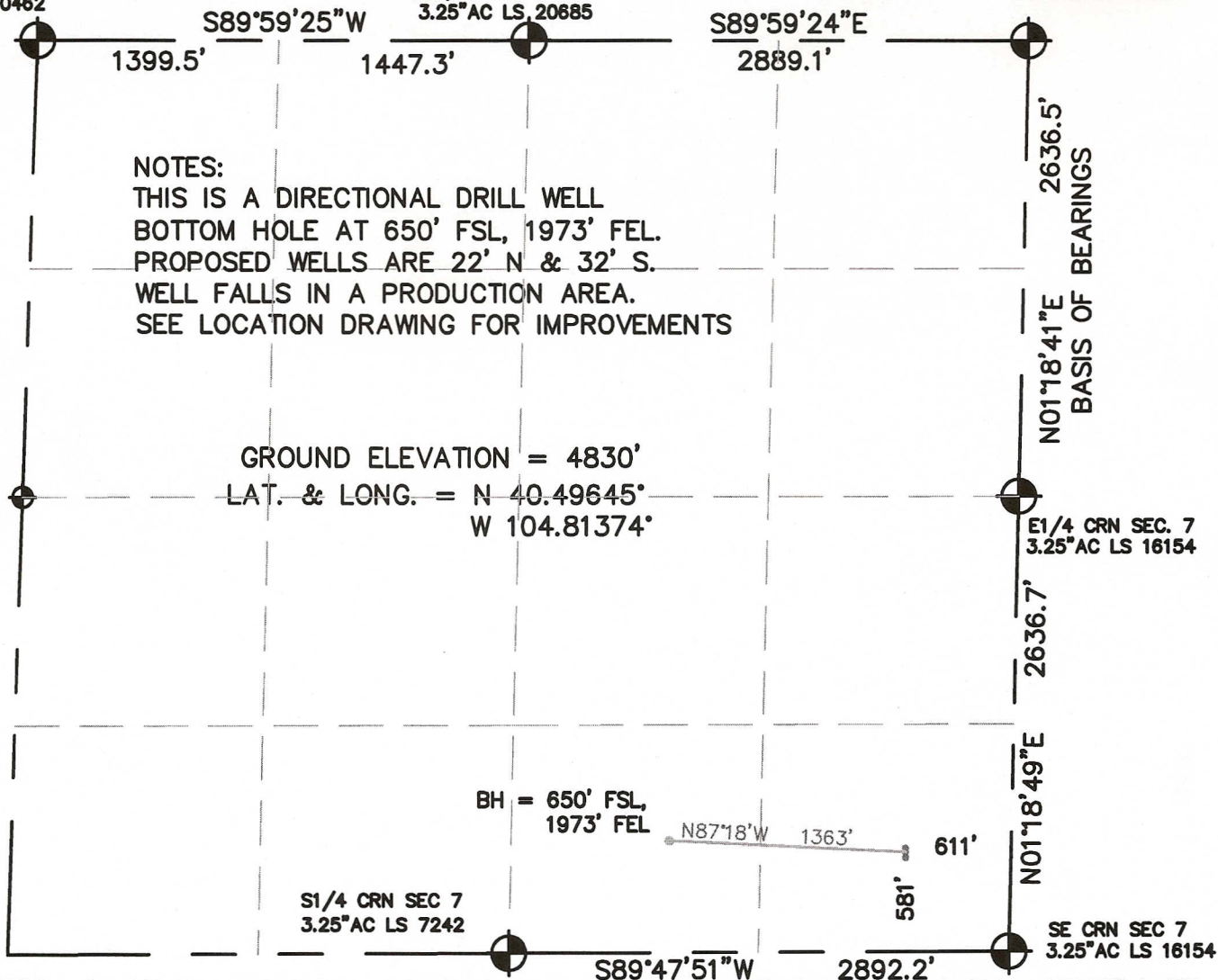
# WELL LOCATION CERTIFICATE

SECTION 7, TOWNSHIP 6 NORTH, RANGE 66 WEST, 6TH P.M.

NW CRN SEC. 7  
3.25"AC LS 30462

N1/4 CRN SEC 7  
3.25"AC LS 20685

NE CRN SEC 7  
3.25"AC LS 20685



## NOTES:

THIS IS A DIRECTIONAL DRILL WELL  
BOTTOM HOLE AT 650' FSL, 1973' FEL.  
PROPOSED WELLS ARE 22' N & 32' S.  
WELL FALLS IN A PRODUCTION AREA.  
SEE LOCATION DRAWING FOR IMPROVEMENTS

GROUND ELEVATION = 4830'

LAT. & LONG. = N 40.49645°  
W 104.81374°

I HEREBY STATE TO PETROLEUM DEVELOPMENT CORP. THAT THIS WELL LOCATION CERTIFICATE FOR THE WELL SCHAEFER 34-7D IS LOCATED 581' FSL & 611' FEL, SEC. 7, T6N, R66W, 6PM.

## LEGEND

- = FOUND MONUMENT
- = PROPOSED WELL
- = BOTTOM HOLE



SCALE 1" = 1000'

ELEVATION SOURCE = USGS 7.5' QUAD.MAP CONTOURS  
NGVD 1929 DATUM.

LAT. & LONG. ARE DIFFERENTIALLY CORRECTED (NAD'83)  
USING (DGPS) WITH (PDOP) VALUES LESS THAN SIX (6).

SHOWN DISTANCES ARE FIELD MEASURED - EXTERIOR SECTION LINES  
ARE DRAWN TO SCALE (BEST APPROX. OR FOUND MONUMENT).

DISTANCES TO WELL SHOWN PERPENDICULAR  
TO SECTION LINES.

THOMAS G. CARLSON, PLS 24657  
HORSESHOE SURVEYING, LLC

THIS IS NOT A MONUMENTED BOUNDARY SURVEY, IT IS ONLY A  
DRAWING INTENDED TO DEPICT THE WELL LOCATION TO SECTION LINES.

PREPARED BY: HORSESHOE SURVEYING, LLC  
PO BOX 150458  
LAKEWOOD, CO 80215  
(720)872-0196

DRAWING DATE:  
6-30-10

FIELD DATE:  
5-1-10

BY: TGC

CHKD:

WELL NAME:  
SCHAEFER 34-7D

LOCATION:  
WELD COUNTY, CO  
SE1/4, SEC. 7, T6N, R66W, 6TH P.M.

JOB NO.

SHEET NO.  
1 OF 1