

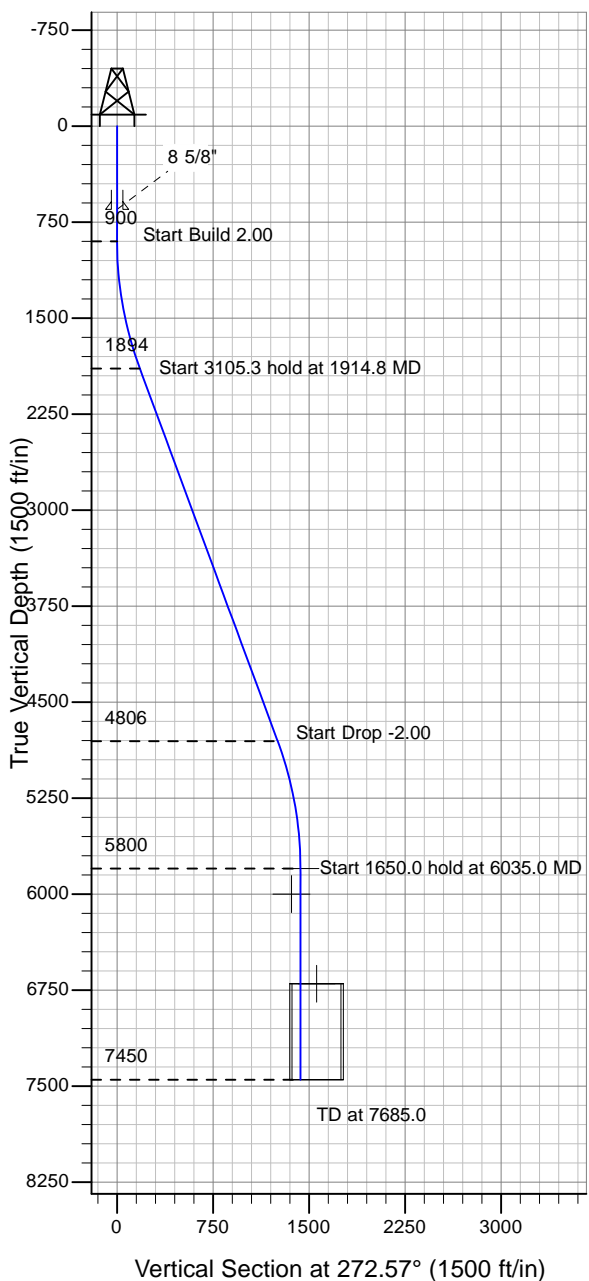
# ENSIGN

## Directional

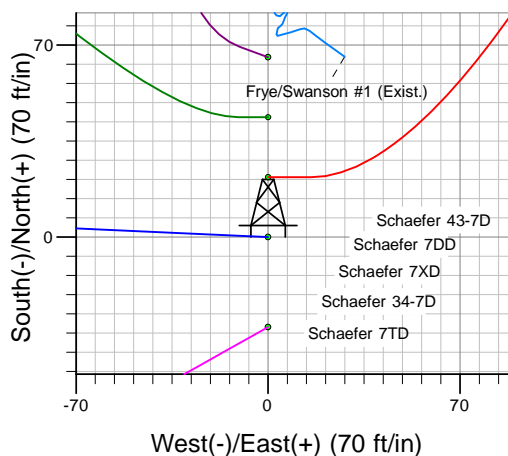
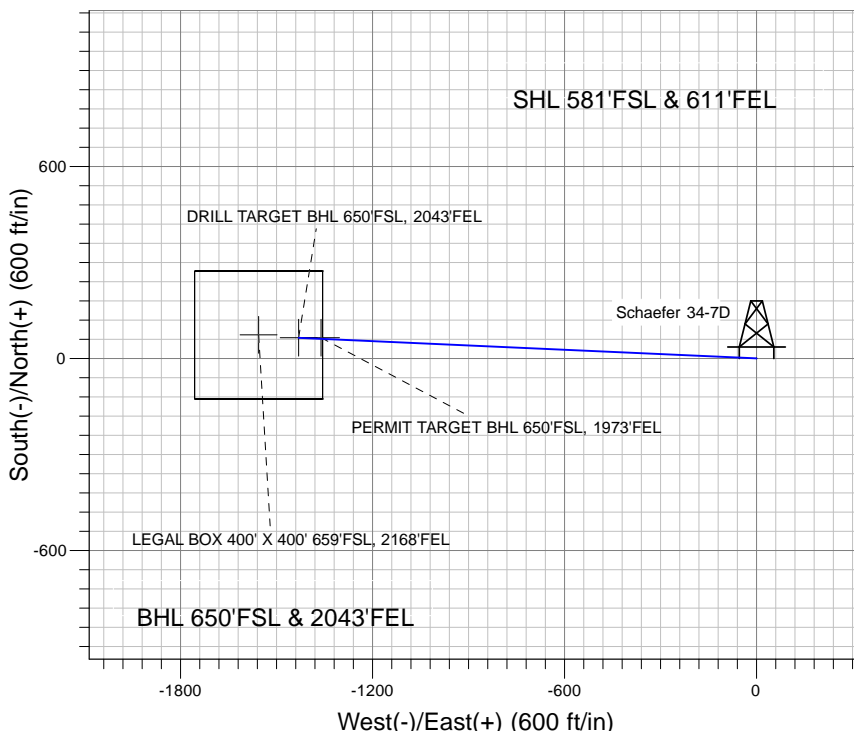
### Well Name: Schaefer 34-7D

Surface Location: Schaefer 43-7D Pad Sec.7-T6N-R66W  
 North American Datum 1983 , US State Plane 1983 , Colorado Northern Zone  
 Ground Elevation: 4830.0

+N/-S+E/-W Northing Easting Latitude Longitude Slot  
 0.0 0.0 1424435.74 3190856.69 40° 29' 47.220 N 104° 48' 49.464 W  
 Original Well Elev WELL @ 4843.0ft (Original Well Elev)



### PETROLEUM DEVELOPMENT CORP Weld County CO



Azimuths to True North  
 Magnetic North: 9.04°

Magnetic Field  
 Strength: 53286.2snT  
 Dip Angle: 67.16°  
 Date: 6/1/2010  
 Model: IGRF2010

### WELLBORE TARGET DETAILS (LAT/LONG)

Name	TVD	+N/-S	+E/-W	Latitude	Longitude	Shape
DRILL TARGET BHL 650'FSL, 2043'FEL	5800.0	64.2	-1431.5	40° 29' 47.854 N	104° 49' 7.993 W	Point
PERMIT TARGET BHL 650'FSL, 1973'FEL	6000.0	64.2	-1361.5	40° 29' 47.854 N	104° 49' 7.087 W	Point
LEGAL BOX 400' X 400' 659'FSL, 2168'FEL	6700.0	73.2	-1556.5	40° 29' 47.943 N	104° 49' 9.611 W	Rectangle (Sides: L400.0 W400.0)

### SECTION DETAILS

Sec	MD	Inc	Azi	TVD	+N/-S	+E/-W	DLeg	TFace	VSec	Target
1	0.0	0.00	0.00	0.0	0.0	0.0	0.00	0.00	0.0	
2	900.0	0.00	0.00	900.0	0.0	0.0	0.00	0.00	0.0	
3	1914.8	20.30	272.57	1893.7	8.0	-177.7	2.00	272.57	177.9	
4	5020.2	20.30	272.57	4806.3	56.2	-1253.8	0.00	0.00	1255.1	
5	6035.0	0.00	0.00	5800.0	64.2	-1431.5	2.00	180.00	1432.9	DRILL TARGET BHL 650'FSL, 2043'FEL
6	7685.0	0.00	0.00	7450.0	64.2	-1431.5	0.00	0.00	1432.9	