

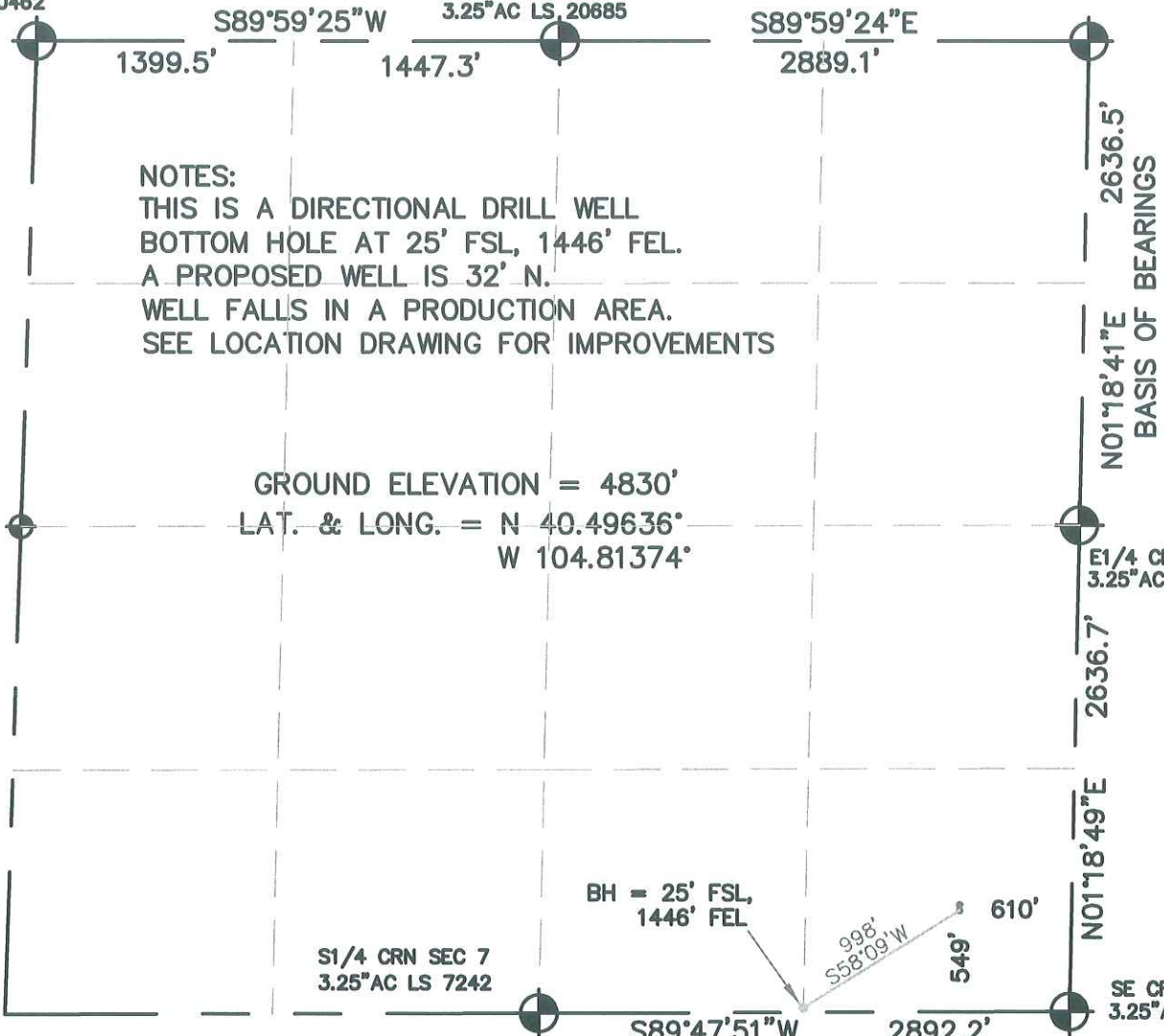
WELL LOCATION CERTIFICATE

SECTION 7, TOWNSHIP 6 NORTH, RANGE 66 WEST, 6TH P.M.

NW CRN SEC. 7
3.25"AC LS 30462

N1/4 CRN SEC 7
3.25"AC LS 20685

NE CRN SEC 7
3.25"AC LS 20685



NOTES:

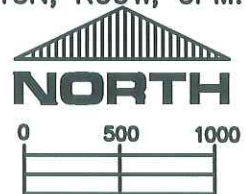
THIS IS A DIRECTIONAL DRILL WELL
BOTTOM HOLE AT 25' FSL, 1446' FEL.
A PROPOSED WELL IS 32' N.
WELL FALLS IN A PRODUCTION AREA.
SEE LOCATION DRAWING FOR IMPROVEMENTS

GROUND ELEVATION = 4830'
LAT. & LONG. = N 40.49636°
W 104.81374'

I HEREBY STATE TO PETROLEUM DEVELOPMENT CORP. THAT THIS WELL LOCATION CERTIFICATE FOR THE WELL SCHAEFER 7TD IS LOCATED 549' FSL & 610' FEL, SEC. 7, T6N, R66W, 6PM.

LEGEND

- = FOUND MONUMENT
- = PROPOSED WELL
- = BOTTOM HOLE



SCALE 1" = 1000'

ELEVATION SOURCE = USGS 7.5' QUAD.MAP CONTOURS
NGVD 1929 DATUM.

LAT. & LONG. ARE DIFFERENTIALLY CORRECTED (NAD'83)
USING (DGPS) WITH (PDOP) VALUES LESS THAN SIX (6).

SHOWN DISTANCES ARE FIELD MEASURED - EXTERIOR SECTION LINES
ARE DRAWN TO SCALE (BEST APPROX. OR FOUND MONUMENT).

DISTANCES TO WELL SHOWN PERPENDICULAR
TO SECTION LINES.

THOMAS G. CARLSON, PLS 24657
HORSESHOE SURVEYING, LLC

THIS IS NOT A MONUMENTED BOUNDARY SURVEY, IT IS ONLY A
DRAWING INTENDED TO DEPICT THE WELL LOCATION TO SECTION LINES.

PREPARED BY:		HORSESHOE SURVEYING, LLC PO BOX 150458 LAKEWOOD, CO 80215 (720)872-0196		WELL NAME: SCHAEFER 7TD	
DRAWING DATE: 5-3-10		BY: TGC		LOCATION: WELD COUNTY, CO SE1/4, SEC. 7, T6N, R66W, 6TH P.M.	
FIELD DATE: 5-1-10		CHKD:		JOB NO. SHEET NO. 1 OF 1	