

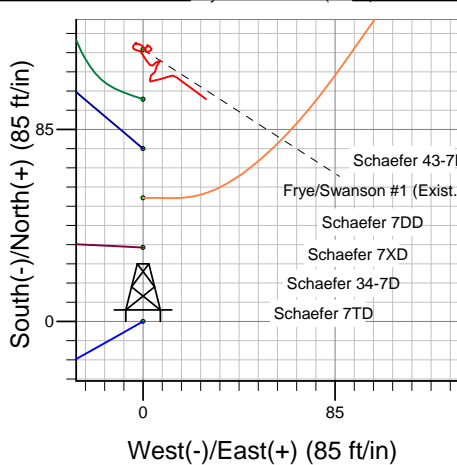
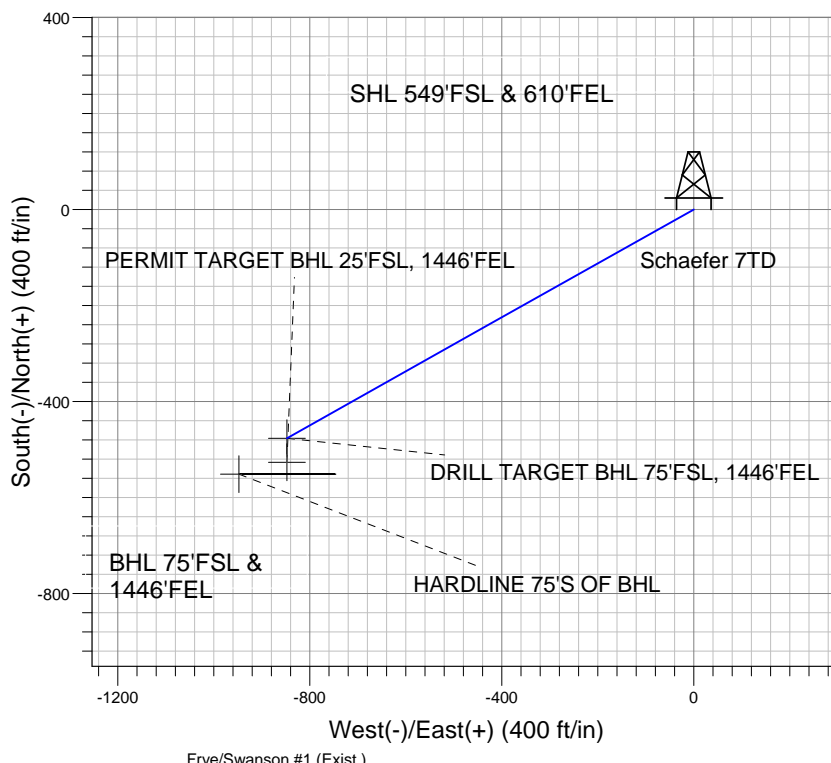
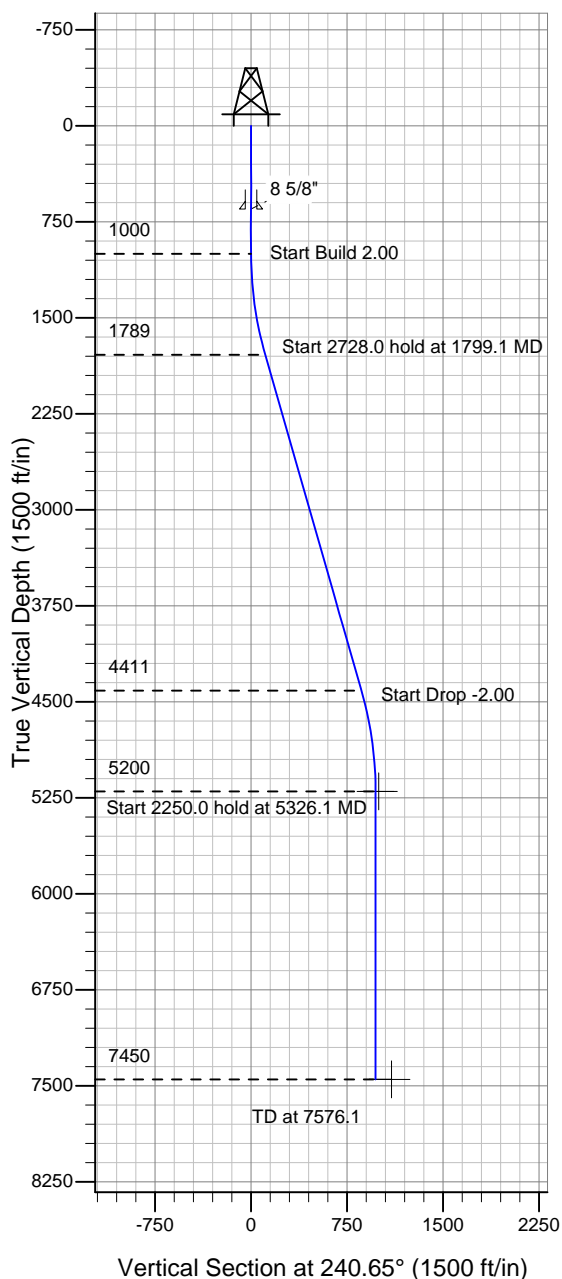
Well Name: Schaefer 7TD

Surface Location: Schaefer 43-7D Pad Sec.7-T6N-R66W
North American Datum 1983 , US State Plane 1983 , Colorado Northern Zone

Ground Elevation: 4830.0

+N/-S	+E/-W	Northing	Easting	Latitude	Longitude	Slot
0.0	0.0	1424402.95	3190856.94	40° 29' 46.896 N	104° 48' 49.464 W	
Original Well Elev WELL @ 4843.0ft (Original Well Elev)						

PETROLEUM DEVELOPMENT CORP Weld County CO



Schaefer 7TD
Plan #1 (6-27-10)
9:57, June 30 2010



Azimuths to True North
Magnetic North: 9.04°
Magnetic Field
Strength: 53286.2snT
Dip Angle: 67.16°
Date: 6/1/2010
Model: IGRF2010

WELLBORE TARGET DETAILS (LAT/LONG)

Name	TVD	+N/-S	+E/-W	Latitude	Longitude	Shape
DRILL TARGET BHL 75'FSL, 1446'FEL	5200.0	-476.6	-847.7	40° 29' 42.186 N	104° 49' 0.436 W	Point
PERMIT TARGET BHL 25'FSL, 1446'FEL	5200.0	-526.6	-847.7	40° 29' 41.692 N	104° 49' 0.437 W	Point
HARDLINE 75'S OF BHL	7450.0	-551.6	-947.7	40° 29' 41.445 N	104° 49' 1.731 W	Polygon

SECTION DETAILS

Sec	MD	Inc	Azi	TVD	+N/-S	+E/-W	DLeg	TFace	VSec	Target
1	0.0	0.00	0.00	0.0	0.0	0.0	0.00	0.00	0.0	
2	1000.0	0.00	0.00	1000.0	0.0	0.0	0.00	0.00	0.0	
3	1799.1	15.98	240.65	1788.7	-54.3	-96.5	2.00	240.65	110.7	
4	4527.0	15.98	240.65	4411.3	-422.3	-751.2	0.00	0.00	861.8	
5	5326.1	0.00	0.00	5200.0	-476.6	-847.7	2.00	180.00	972.5	DRILL TARGET BHL 75'FSL, 1446'FEL
6	7576.1	0.00	0.00	7450.0	-476.6	-847.7	0.00	0.00	972.5	