

IMPROVEMENT NOTE:

See addendum to legal plat (sheet 2k)
for visible improvements within 400' of
the proposed well pad.

**T7S, R93W,
6th P.M.**

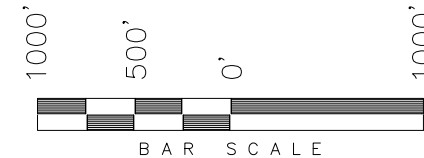
ENCANA OIL & GAS (USA) INC

WELL LOCATION, ROSE RANCH 23-6B1
(A22W), LOCATED AS SHOWN IN THE
NE 1/4 NE 1/4 OF SECTION 22, T7S,
R93W, 6th P.M. GARFIELD COUNTY,
COLORADO.

NOTES:

1. Well footages are measured at right angles to the Section Lines.
2. Bearings are based on Global Positioning Satellite observations.
3. G.P.S. Operator:
C.D. SLAUGH, (PDOP) = 2.0

See
Sheet
2cc



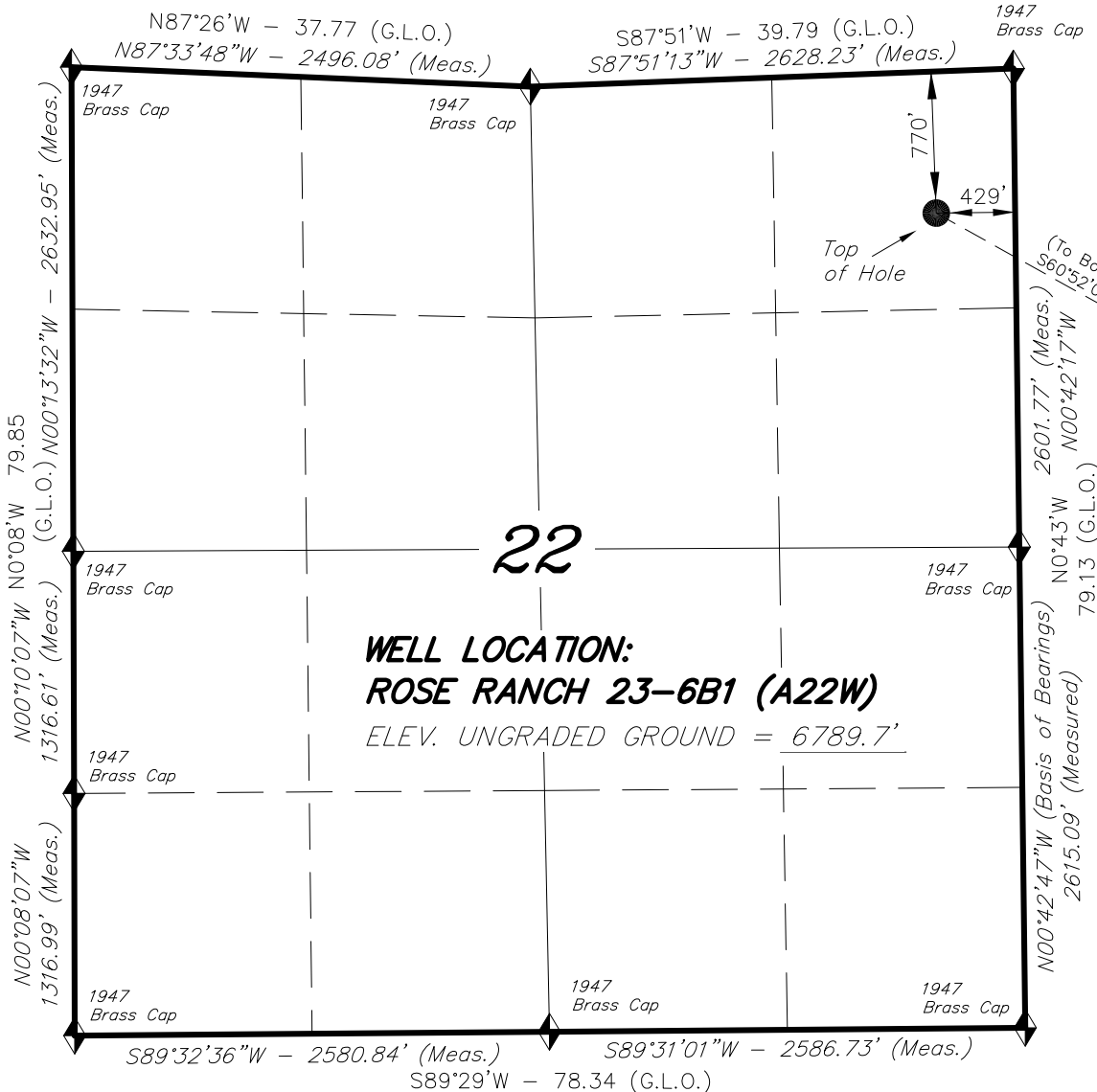
THIS IS TO CERTIFY THAT THE ABOVE PLAT WAS
PREPARED FROM FIELD NOTES OF ACTUAL SURVEYS
MADE BY ME OR UNDER MY SUPERVISION. THE LOCATION
HAS BEEN STAKED ON THE GROUND AS SHOWN ON THE
PLAT, AND THAT THE SAID ARE TRUE AND CORRECT
TO THE BEST OF MY KNOWLEDGE AND BELIEF.

[Signature]
30125
REGISTERED LAND SURVEYOR
REGISTRATION NO. 30125
STATE OF COLORADO

TRI STATE LAND SURVEYING & CONSULTING

180 NORTH VERNAL AVE. - VERNAL, UTAH 84078
(435) 781-2501

DATE SURVEYED: 05-25-10	SURVEYED BY: C.D.S.	SHEET 2c OF 11
DATE DRAWN: 05-26-10	DRAWN BY: F.T.M.	
REVISED: F.T.M. 06-02-10	SCALE: 1" = 1000'	



NAD 83 (SURFACE LOCATION)

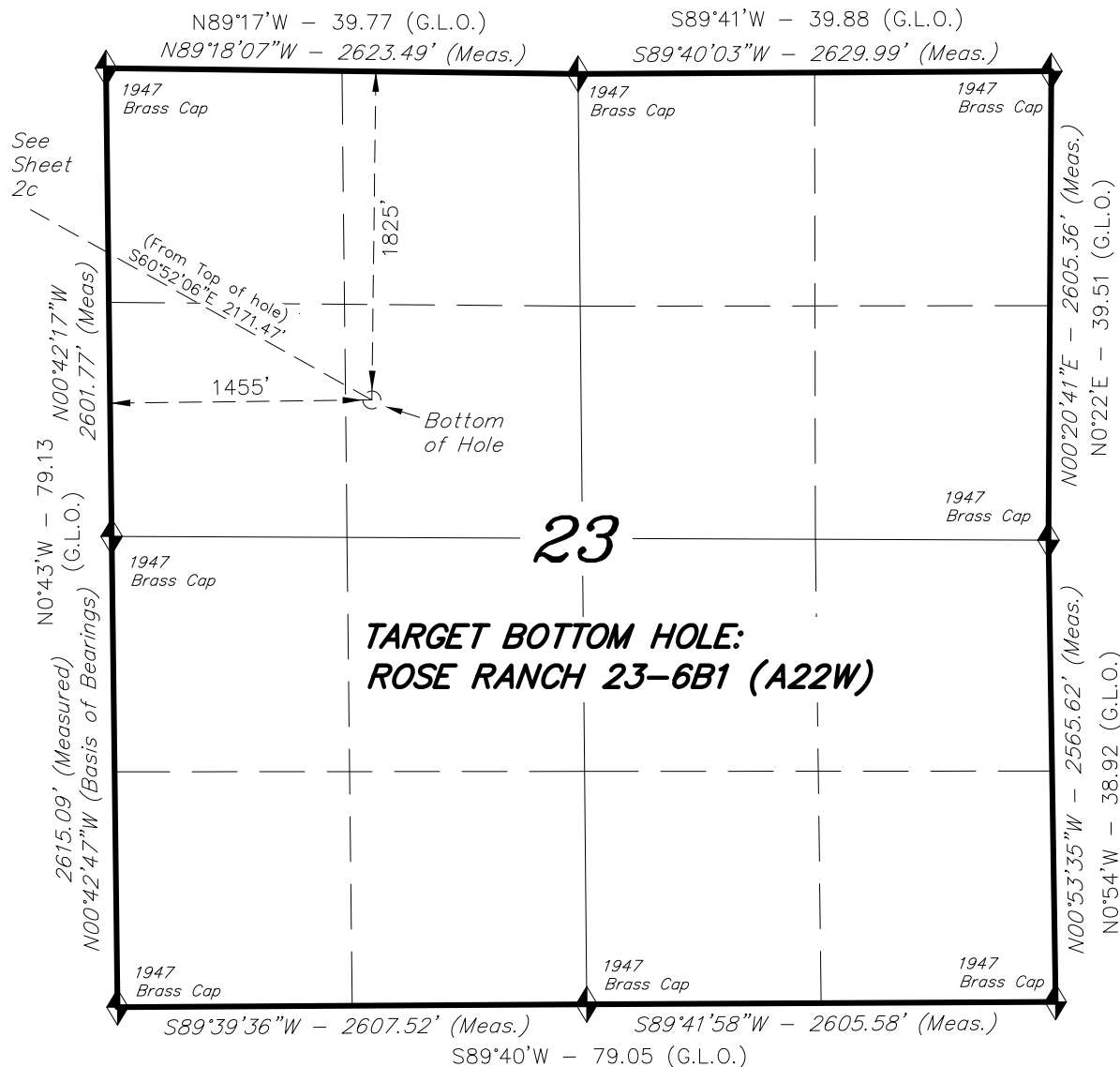
LATITUDE = 39°26'10.78"
(39.436328)
LONGITUDE = 107°45'10.12"
(107.752811)

◆ = SECTION CORNERS LOCATED

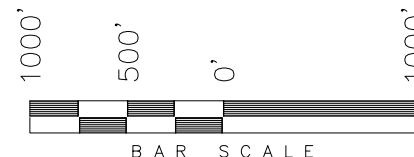
Basis of elevation is the Rifle 2 Triangulation
Station. 39°31'53.80" N Lat. & 107°47'07.78" W
Long. (NAD 83). Elevation = 5323.1' (NAVD88).

T7S, R93W, 6th P.M.

ENCANA OIL & GAS (USA) INC



TARGET BOTTOM HOLE, ROSE RANCH 23-6B1 (A22W), LOCATED AS SHOWN IN THE SE 1/4 NW 1/4 OF SECTION 23, T7S, R93W, 6th P.M. GARFIELD COUNTY, COLORADO.



NOTES:

1. Well footages are measured at right angles to the Section Lines.
2. Bearings are based on Global Positioning Satellite observations.

THIS IS TO CERTIFY THAT THE ABOVE PLAT WAS PREPARED FROM FIELD NOTES OF A SURVEY MADE BY ME OR UNDER MY SUPERVISION. THE LOCATION HAS BEEN STAKED ON THE GROUND AS SHOWN ON THE PLAT, AND THAT THE SAME ARE TRUE AND CORRECT TO THE BEST OF MY KNOWLEDGE AND BELIEF.

[Signature]
30125
REGISTERED LAND SURVEYOR
REGISTRATION No. 30125
STATE OF COLORADO

TRI STATE LAND SURVEYING & CONSULTING

180 NORTH VERNAL AVE. - VERNAL, UTAH 84078
(435) 781-2501

DATE SURVEYED: 05-25-10	SURVEYED BY: C.D.S.	SHEET 2cc OF 11
DATE DRAWN: 05-26-10	DRAWN BY: F.T.M.	
REVISED: F.T.M. 06-02-10	SCALE: 1" = 1000'	

◆ = SECTION CORNERS LOCATED

Basis of elevation is the Rifle 2 Triangulation Station. 39°31'53.80" N Lat. & 107°47'07.78" W Long. (NAD 83). Elevation = 5323.1' (NAVD88).