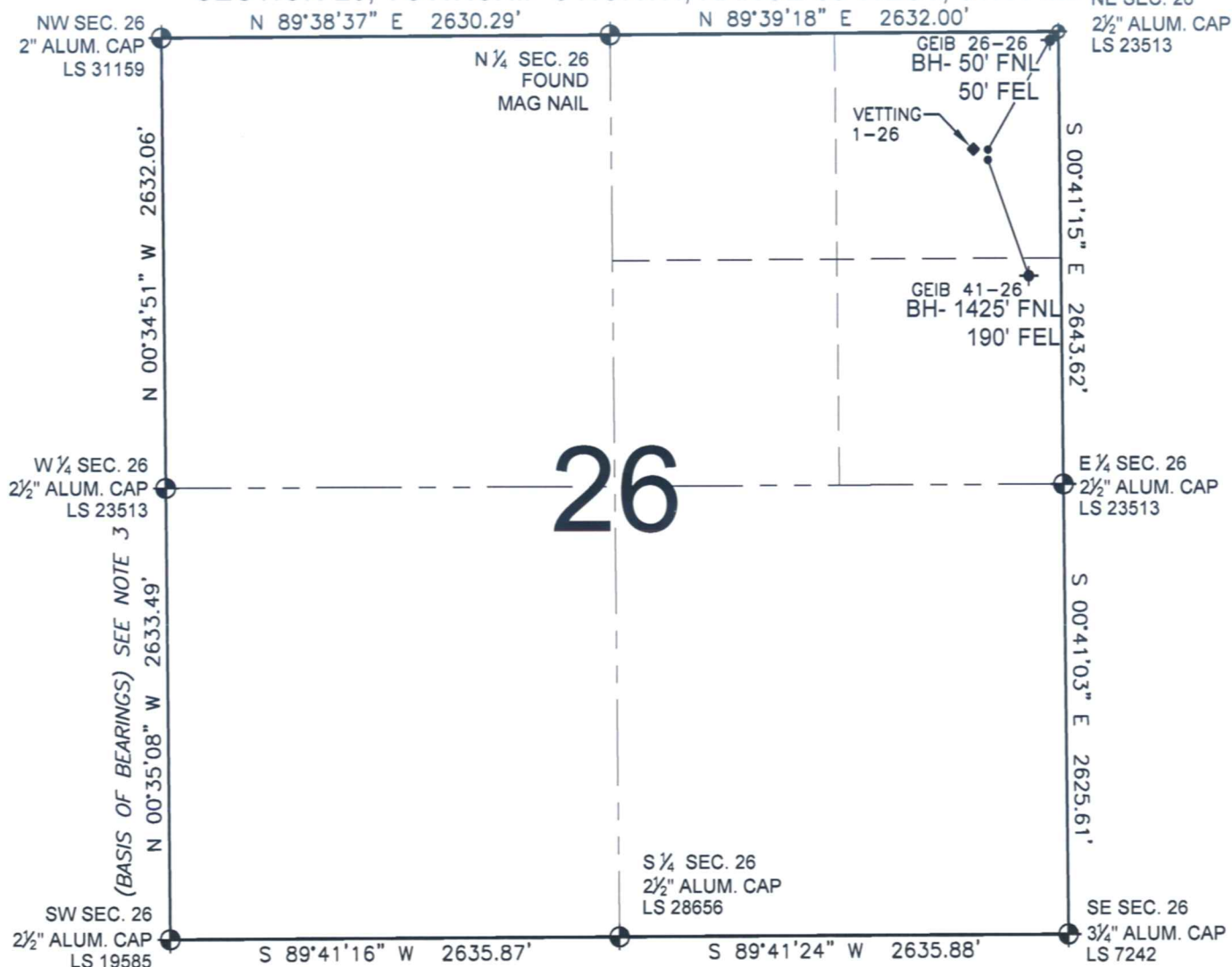


# PAD DRAWING - GEIB 2 PAD

SECTION 26, TOWNSHIP 5 NORTH, RANGE 65 WEST, 6TH P.M.



## LEGEND

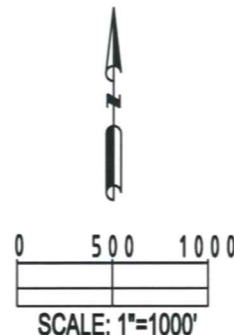
- = EXISTING MONUMENT   
 = BOTTOM HOLE   
 BH= BOTTOM HOLE  
 = PROPOSED WELL   
 = EXISTING WELL

## NOTES:

- THIS SURVEY WAS DONE BY GPS METHODS AND CONFORMS TO THE MINIMUM STANDARDS SET BY THE C.O.G.C.C., RULE NO. 215
- ELEVATIONS SHOWN AT THE WELL HEAD, AS WELL AS HORIZONTAL CONTROL, ARE BASED ON GPS-RTK VALUES DERIVED FROM DOING 2-HOUR STATIC GPS SESSIONS AND REDUCTIONS USING O.P.U.S. SOLUTIONS.  
VERTICAL = NAVD88; HORIZONTAL = NAD83/92
- THE BEARINGS SHOWN HEREON ARE BASED ON GPS OBSERVATIONS BETWEEN THE MONUMENTS SHOWN HEREON AS FOUND ON THE FIELD DATE BELOW.
- DISTANCES SHOWN ARE AT GROUND LEVEL, AS MEASURED IN THE FIELD, WITH TIES TO WELLS MEASURED AT A PERPENDICULAR TO SECTION LINES.

## NOTES:

- GEIB 41-26 TO BE AT 702' FNL, 421' FEL.  
 BOTTOM HOLE AT 1425' FNL & 190' FEL.  
 GEIB 26-26 TO BE AT 686' FNL, 421' FEL.  
 BOTTOM HOLE AT 50' FNL & 50' FEL.  
 VETTING 1-26 IS 686' FNL, 471' FEL.



## REVISIONS

INITIAL DATE

PREPARED BY:

**PFS**

Petroleum Field Services, LLC  
1801 W. 13th Ave.  
Denver, CO 80204



KERR-MCGEE OIL & GAS ONSHORE LP

FIELD DATE:  
12-29-09

DRAWING DATE:  
01-04-10

BY:  
SMF

PAD NAME:  
GEIB 2 PAD

SURFACE LOCATION:

WELD COUNTY, COLORADO  
NE 1/4 NE 1/4, SEC. 26, T5N, R65W