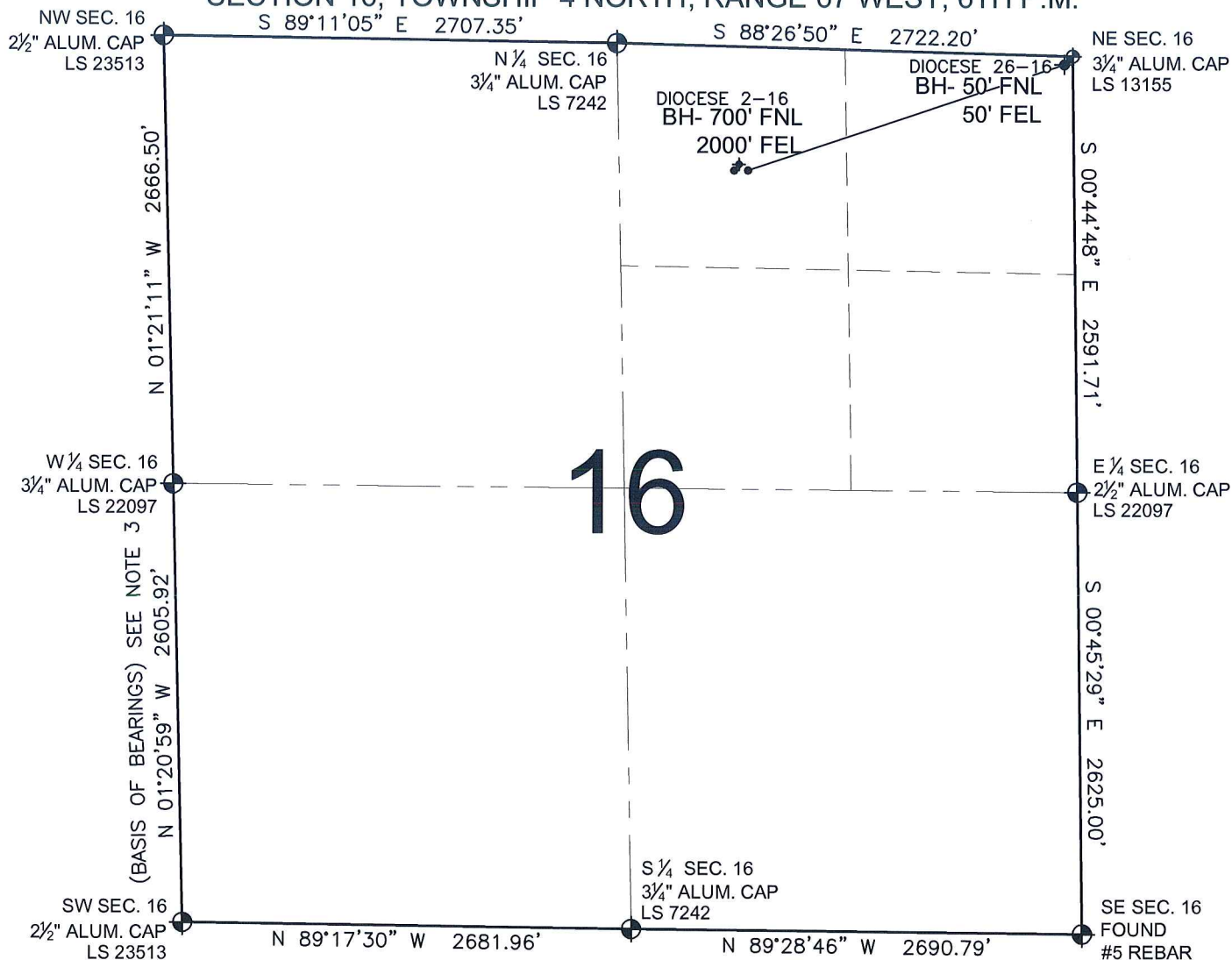


PAD DRAWING - DIOCESE 2 PAD

SECTION 16, TOWNSHIP 4 NORTH, RANGE 67 WEST, 6TH P.M.



LEGEND

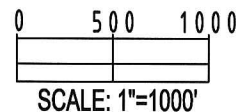
- = EXISTING MONUMENT
 = BOTTOM HOLE
 BH= BOTTOM HOLE
 = PROPOSED WELL
 = EXISTING WELL

NOTES:

- THIS SURVEY WAS DONE BY GPS METHODS AND CONFORMS TO THE MINIMUM STANDARDS SET BY THE C.O.G.C.C., RULE NO. 215
- ELEVATIONS SHOWN AT THE WELL HEAD, AS WELL AS HORIZONTAL CONTROL, ARE BASED ON GPS-RTK VALUES DERIVED FROM DOING 2-HOUR STATIC GPS SESSIONS AND REDUCTIONS USING O.P.U.S. SOLUTIONS.
VERTICAL = NAVD88; HORIZONTAL = NAD83/92
- THE BEARINGS SHOWN HEREON ARE BASED ON GPS OBSERVATIONS BETWEEN THE MONUMENTS SHOWN HEREON AS FOUND ON THE FIELD DATE BELOW.
- DISTANCES SHOWN ARE AT GROUND LEVEL, AS MEASURED IN THE FIELD, WITH TIES TO WELLS MEASURED AT A PERPENDICULAR TO SECTION LINES.

NOTES:

- DIOCESE 2-16 TO BE AT 737' FNL, 2029' FEL.
 BOTTOM HOLE AT 700' FNL & 2000' FEL.
 DIOCESE 26-16 TO BE AT 737' FNL, 2013' FEL.
 BOTTOM HOLE AT 50' FNL & 50' FEL.



REVISIONS

INITIAL	DATE

PREPARED BY:

PFS

Petroleum Field Services, LLC
1801 W. 13th Ave.
Denver, CO 80204



KERR-MCGEE OIL & GAS ONSHORE LP

FIELD DATE:
03-12-10

DRAWING DATE:
03-15-10

BY:
SMF

PAD NAME:
DIOCESE 2 PAD

SURFACE LOCATION:

WELD COUNTY, COLORADO
NW 1/4 NE 1/4, SEC. 16, T4N, R67W