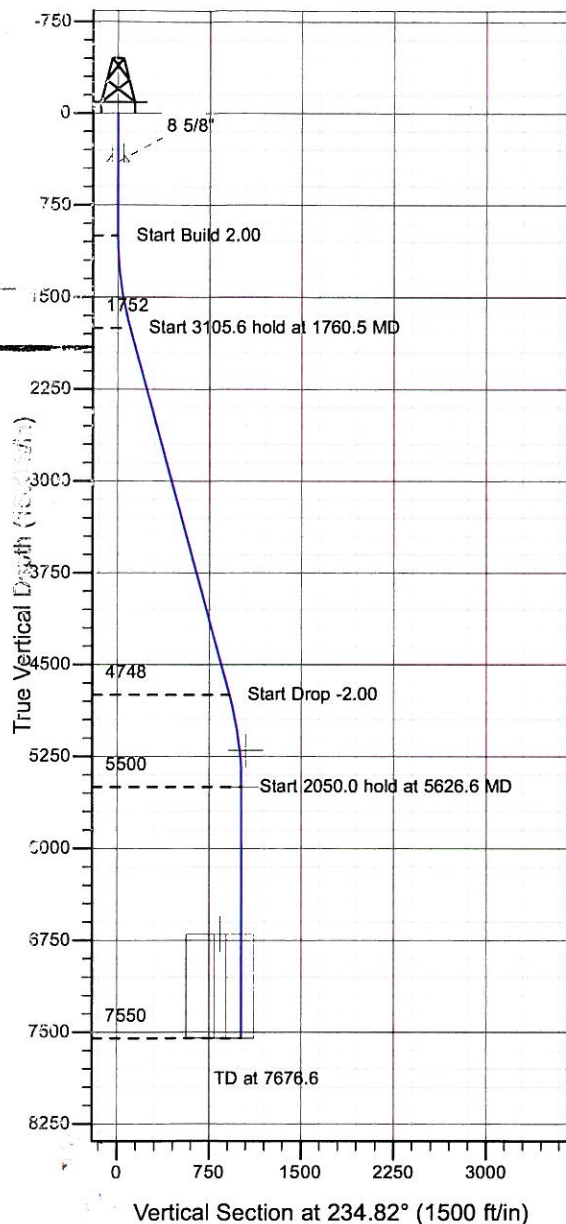


ENSIGN

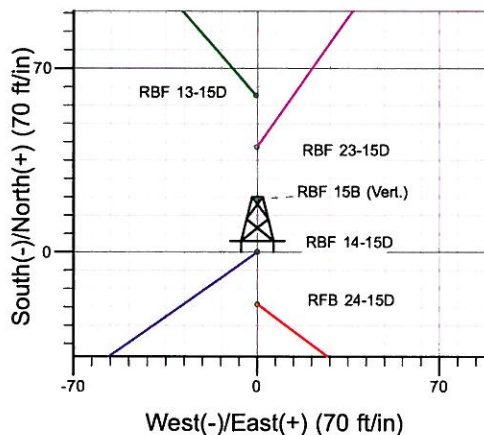
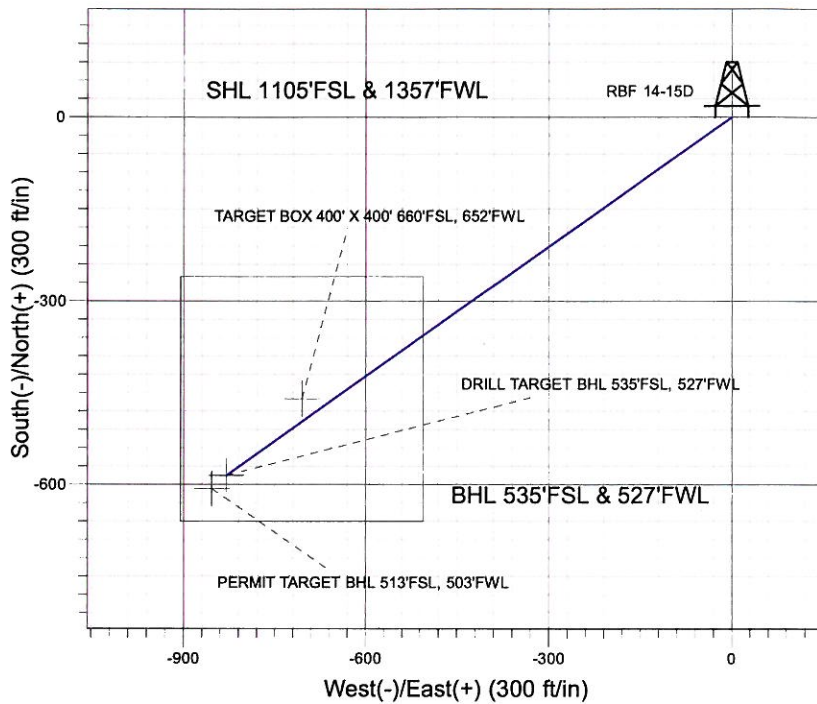
Directional

Well Name: RBF 14-15D

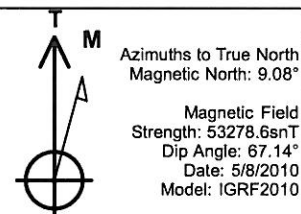
Surface Location: RBF 24-15D Pad Sec.15-T6N-R67W
 North American Datum 1983 , US State Plane 1983 , Colorado Northern Zone
 Ground Elevation: 4781.0
 +N/-S+E/-W Northing Easting Latitude Longitude Slot
 0.0 0.0 1419275.24 3171309.21 40° 28' 57.644 N 104° 53' 2.951 W
 Original Well Elev WELL @ 4794.0ft (Original Well Elev)



Synergy Resources



RBF 24-15D Pad Sec.15-T6N-R67W
 RBF 14-15D
 Plan #1 (5-8-10)
 16:32, May 12 2010



WELLBORE TARGET DETAILS (LAT/LONG)

Name	TVD	+N/-S	+E/-W	Latitude	Longitude	Shape
PERMIT TARGET BHL 513'FSL, 503'FWL	5200.0	-607.0	-854.0	40° 28' 51.646 N	104° 53' 14.002 W	Point
DRILL TARGET BHL 535'FSL, 527'FWL	5500.0	-585.0	-830.0	40° 28' 51.863 N	104° 53' 13.692 W	Point
TARGET BOX 400' X 400' 660'FSL, 652'FWL	6700.0	-460.0	-705.0	40° 28' 53.099 N	104° 53' 12.074 W	Rectangle (Sides: L400.0 W400.0)

SECTION DETAILS

Sec	MD	Inc	Azi	TVD	+N/-S	+E/-W	DLeg	TFace	VSec	Target
1	0.0	0.00	0.00	0.0	0.0	0.0	0.00	0.00	0.0	
2	1000.0	0.00	0.00	1000.0	0.0	0.0	0.00	0.00	0.0	
3	1760.5	15.21	234.82	1751.6	-57.8	-82.0	2.00	234.82	100.3	
4	4866.1	15.21	234.82	4748.4	-527.2	-748.4	0.00	0.00	915.1	
5	5626.6	0.00	0.00	5500.0	-585.0	-830.0	2.00	180.00	1015.4	DRILL TARGET BHL 535'FSL, 527'FWL
6	7676.6	0.00	0.00	7550.0	-585.0	-830.0	0.00	0.00	1015.4	



Directional

Synergy Resources

SEC.15-T6N-R67W

RBF 24-15D Pad Sec.15-T6N-R67W

RBF 14-15D

Wellbore #1

Plan: Plan #1 (5-8-10)

Standard Planning Report

12 May, 2010

Database:	EDM den0-adp01 Server Data	Local Co-ordinate Reference:	Well RBF 14-15D
Company:	Synergy Resources	TVD Reference:	WELL @ 4794.0ft (Original Well Elev)
Project:	SEC.15-T6N-R67W	MD Reference:	WELL @ 4794.0ft (Original Well Elev)
Site:	RBF 24-15D Pad Sec.15-T6N-R67W	North Reference:	True
Well:	RBF 14-15D	Survey Calculation Method:	Minimum Curvature
Wellbore:	Wellbore #1		
Design:	Plan #1 (5-8-10)		

Project	SEC.15-T6N-R67W, Weld County, Colorado		
Map System:	US State Plane 1983	System Datum:	Mean Sea Level
Geo Datum:	North American Datum 1983		
Map Zone:	Colorado Northern Zone		Using geodetic scale factor

Site		RBF 24-15D Pad Sec.15-T6N-R67W			
Site Position:		Northing:	1,419,255.21 ft	Latitude:	40° 28' 57.446 N
From:	Lat/Long	Easting:	3,171,309.35 ft	Longitude:	104° 53' 2.951 W
Position Uncertainty:	0.0 ft	Slot Radius:	"	Grid Convergence:	0.40 °

Well	RBF 14-15D					
Well Position	+N/-S	20.0 ft	Northing:	1,419,275.24 ft	Latitude:	40° 28' 57.644 N
	+E/-W	0.0 ft	Easting:	3,171,309.21 ft	Longitude:	104° 53' 2.951 W
Position Uncertainty		0.0 ft	Wellhead Elevation:	ft	Ground Level:	4,781.0 ft

Wellbore	Wellbore #1				
Magnetics	Model Name	Sample Date	Declination (°)	Dip Angle (°)	Field Strength (nT)
	IGRF2010	5/8/2010	9.09	67.14	53,279

Design	Plan #1 (5-8-10)			
Audit Notes:				
Version:	Phase:	PROTOTYPE	Tie On Depth:	0.0
Vertical Section:	Depth From (TVD) (ft)	+N/-S (ft)	+E/-W (ft)	Direction (°)
	0.0	0.0	0.0	234.82

Plan Sections										
Measured Depth (ft)	Inclination (°)	Azimuth (°)	Vertical Depth (ft)	+N/-S (ft)	+E/-W (ft)	Dogleg Rate (°/100ft)	Build Rate (°/100ft)	Turn Rate (°/100ft)	TFO (°)	Target
0.0	0.00	0.00	0.0	0.0	0.0	0.00	0.00	0.00	0.00	
1,000.0	0.00	0.00	1,000.0	0.0	0.0	0.00	0.00	0.00	0.00	
1,760.5	15.21	234.82	1,751.6	-57.8	-82.0	2.00	2.00	0.00	234.82	
4,866.1	15.21	234.82	4,748.4	-527.2	-748.0	0.00	0.00	0.00	0.00	
5,626.6	0.00	0.00	5,500.0	-585.0	-830.0	2.00	-2.00	0.00	180.00	DRILL TARGET B+
7,676.6	0.00	0.00	7,550.0	-585.0	-830.0	0.00	0.00	0.00	0.00	



ENSIGN DIRECTIONAL

Directional

Planning Report

Database:	EDM den0-adp01 Server Data	Local Co-ordinate Reference:	Well RBF 14-15D
Company:	Synergy Resources	TVD Reference:	WELL @ 4794.0ft (Original Well Elev)
Project:	SEC.15-T6N-R67W	MD Reference:	WELL @ 4794.0ft (Original Well Elev)
Site:	RBF 24-15D Pad Sec.15-T6N-R67W	North Reference:	True
Well:	RBF 14-15D	Survey Calculation Method:	Minimum Curvature
Wellbore:	Wellbore #1		
Design:	Plan #1 (5-8-10)		

Planned Survey									
Measured Depth (ft)	Inclination (°)	Azimuth (°)	Vertical Depth (ft)	+N/-S (ft)	+E/-W (ft)	Vertical Section (ft)	Dogleg Rate (°/100ft)	Build Rate (°/100ft)	Turn Rate (°/100ft)
0.0	0.00	0.00	0.0	0.0	0.0	0.0	0.00	0.00	0.00
40.0	0.00	0.00	40.0	0.0	0.0	0.0	0.00	0.00	0.00
80.0	0.00	0.00	80.0	0.0	0.0	0.0	0.00	0.00	0.00
120.0	0.00	0.00	120.0	0.0	0.0	0.0	0.00	0.00	0.00
160.0	0.00	0.00	160.0	0.0	0.0	0.0	0.00	0.00	0.00
200.0	0.00	0.00	200.0	0.0	0.0	0.0	0.00	0.00	0.00
240.0	0.00	0.00	240.0	0.0	0.0	0.0	0.00	0.00	0.00
280.0	0.00	0.00	280.0	0.0	0.0	0.0	0.00	0.00	0.00
320.0	0.00	0.00	320.0	0.0	0.0	0.0	0.00	0.00	0.00
360.0	0.00	0.00	360.0	0.0	0.0	0.0	0.00	0.00	0.00
400.0	0.00	0.00	400.0	0.0	0.0	0.0	0.00	0.00	0.00
8 5/8"									
440.0	0.00	0.00	440.0	0.0	0.0	0.0	0.00	0.00	0.00
480.0	0.00	0.00	480.0	0.0	0.0	0.0	0.00	0.00	0.00
520.0	0.00	0.00	520.0	0.0	0.0	0.0	0.00	0.00	0.00
560.0	0.00	0.00	560.0	0.0	0.0	0.0	0.00	0.00	0.00
600.0	0.00	0.00	600.0	0.0	0.0	0.0	0.00	0.00	0.00
640.0	0.00	0.00	640.0	0.0	0.0	0.0	0.00	0.00	0.00
680.0	0.00	0.00	680.0	0.0	0.0	0.0	0.00	0.00	0.00
720.0	0.00	0.00	720.0	0.0	0.0	0.0	0.00	0.00	0.00
760.0	0.00	0.00	760.0	0.0	0.0	0.0	0.00	0.00	0.00
800.0	0.00	0.00	800.0	0.0	0.0	0.0	0.00	0.00	0.00
840.0	0.00	0.00	840.0	0.0	0.0	0.0	0.00	0.00	0.00
880.0	0.00	0.00	880.0	0.0	0.0	0.0	0.00	0.00	0.00
920.0	0.00	0.00	920.0	0.0	0.0	0.0	0.00	0.00	0.00
960.0	0.00	0.00	960.0	0.0	0.0	0.0	0.00	0.00	0.00
1,000.0	0.00	0.00	1,000.0	0.0	0.0	0.0	0.00	0.00	0.00
1,040.0	0.80	234.82	1,040.0	-0.2	-0.2	0.3	2.00	2.00	0.00
1,080.0	1.60	234.82	1,080.0	-0.6	-0.9	1.1	2.00	2.00	0.00
1,120.0	2.40	234.82	1,120.0	-1.4	-2.1	2.5	2.00	2.00	0.00
1,160.0	3.20	234.82	1,159.9	-2.6	-3.7	4.5	2.00	2.00	0.00
1,200.0	4.00	234.82	1,199.8	-4.0	-5.7	7.0	2.00	2.00	0.00
1,240.0	4.80	234.82	1,239.7	-5.8	-8.2	10.0	2.00	2.00	0.00
1,280.0	5.60	234.82	1,279.6	-7.9	-11.2	13.7	2.00	2.00	0.00
1,320.0	6.40	234.82	1,319.3	-10.3	-14.6	17.9	2.00	2.00	0.00
1,360.0	7.20	234.82	1,359.1	-13.0	-18.5	22.6	2.00	2.00	0.00
1,400.0	8.00	234.82	1,398.7	-16.1	-22.8	27.9	2.00	2.00	0.00
1,440.0	8.80	234.82	1,438.3	-19.4	-27.6	33.7	2.00	2.00	0.00
1,480.0	9.60	234.82	1,477.8	-23.1	-32.8	40.1	2.00	2.00	0.00
1,520.0	10.40	234.82	1,517.1	-27.1	-38.5	47.1	2.00	2.00	0.00
1,560.0	11.20	234.82	1,556.4	-31.4	-44.6	54.6	2.00	2.00	0.00
1,600.0	12.00	234.82	1,595.6	-36.1	-51.2	62.6	2.00	2.00	0.00
1,640.0	12.80	234.82	1,634.7	-41.0	-58.2	71.2	2.00	2.00	0.00
1,680.0	13.60	234.82	1,673.6	-46.3	-65.7	80.3	2.00	2.00	0.00
1,720.0	14.40	234.82	1,712.4	-51.9	-73.6	90.0	2.00	2.00	0.00
1,760.0	15.20	234.82	1,751.1	-57.7	-81.9	100.2	2.00	2.00	0.00
1,760.5	15.21	234.82	1,751.6	-57.8	-82.0	100.3	2.00	2.00	0.00
1,800.0	15.21	234.82	1,789.7	-63.8	-90.5	110.7	0.00	0.00	0.00
1,840.0	15.21	234.82	1,828.3	-69.8	-99.1	121.2	0.00	0.00	0.00
1,880.0	15.21	234.82	1,866.9	-75.9	-107.7	131.7	0.00	0.00	0.00
1,920.0	15.21	234.82	1,905.5	-81.9	-116.2	142.2	0.00	0.00	0.00
1,960.0	15.21	234.82	1,944.1	-88.0	-124.8	152.7	0.00	0.00	0.00
2,000.0	15.21	234.82	1,982.7	-94.0	-133.4	163.2	0.00	0.00	0.00
2,040.0	15.21	234.82	2,021.3	-100.1	-142.0	173.7	0.00	0.00	0.00

Database:	EDM den0-adp01 Server Data	Local Co-ordinate Reference:	Well RBF 14-15D
Company:	Synergy Resources	TVD Reference:	WELL @ 4794.0ft (Original Well Elev)
Project:	SEC.15-T6N-R67W	MD Reference:	WELL @ 4794.0ft (Original Well Elev)
Site:	RBF 24-15D Pad Sec.15-T6N-R67W	North Reference:	True
Well:	RBF 14-15D	Survey Calculation Method:	Minimum Curvature
Wellbore:	Wellbore #1		
Design:	Plan #1 (5-8-10)		

Planned Survey										
Measured Depth (ft)	Inclination (°)	Azimuth (°)	Vertical Depth (ft)	+N/-S (ft)	+E/-W (ft)	Vertical Section (ft)	Dogleg Rate (°/100ft)	Build Rate (°/100ft)	Turn Rate (°/100ft)	
2,080.0	15.21	234.82	2,059.9	-106.1	-150.5	184.2	0.00	0.00	0.00	
2,120.0	15.21	234.82	2,098.5	-112.1	-159.1	194.7	0.00	0.00	0.00	
2,160.0	15.21	234.82	2,137.1	-118.2	-167.7	205.2	0.00	0.00	0.00	
2,200.0	15.21	234.82	2,175.7	-124.2	-176.3	215.7	0.00	0.00	0.00	
2,240.0	15.21	234.82	2,214.3	-130.3	-184.8	226.1	0.00	0.00	0.00	
2,280.0	15.21	234.82	2,252.9	-136.3	-193.4	236.6	0.00	0.00	0.00	
2,320.0	15.21	234.82	2,291.5	-142.4	-202.0	247.1	0.00	0.00	0.00	
2,360.0	15.21	234.82	2,330.1	-148.4	-210.6	257.6	0.00	0.00	0.00	
2,400.0	15.21	234.82	2,368.7	-154.5	-219.2	268.1	0.00	0.00	0.00	
2,440.0	15.21	234.82	2,407.3	-160.5	-227.7	278.6	0.00	0.00	0.00	
2,480.0	15.21	234.82	2,445.9	-166.6	-236.3	289.1	0.00	0.00	0.00	
2,520.0	15.21	234.82	2,484.5	-172.6	-244.9	299.6	0.00	0.00	0.00	
2,560.0	15.21	234.82	2,523.1	-178.6	-253.5	310.1	0.00	0.00	0.00	
2,600.0	15.21	234.82	2,561.7	-184.7	-262.0	320.6	0.00	0.00	0.00	
2,640.0	15.21	234.82	2,600.3	-190.7	-270.6	331.1	0.00	0.00	0.00	
2,680.0	15.21	234.82	2,638.9	-196.8	-279.2	341.6	0.00	0.00	0.00	
2,720.0	15.21	234.82	2,677.5	-202.8	-287.8	352.1	0.00	0.00	0.00	
2,760.0	15.21	234.82	2,716.1	-208.9	-296.4	362.6	0.00	0.00	0.00	
2,800.0	15.21	234.82	2,754.7	-214.9	-304.9	373.1	0.00	0.00	0.00	
2,840.0	15.21	234.82	2,793.3	-221.0	-313.5	383.6	0.00	0.00	0.00	
2,880.0	15.21	234.82	2,831.9	-227.0	-322.1	394.0	0.00	0.00	0.00	
2,920.0	15.21	234.82	2,870.5	-233.1	-330.7	404.5	0.00	0.00	0.00	
2,960.0	15.21	234.82	2,909.1	-239.1	-339.2	415.0	0.00	0.00	0.00	
3,000.0	15.21	234.82	2,947.7	-245.1	-347.8	425.5	0.00	0.00	0.00	
3,040.0	15.21	234.82	2,986.3	-251.2	-356.4	436.0	0.00	0.00	0.00	
3,080.0	15.21	234.82	3,024.9	-257.2	-365.0	446.5	0.00	0.00	0.00	
3,120.0	15.21	234.82	3,063.5	-263.3	-373.6	457.0	0.00	0.00	0.00	
3,160.0	15.21	234.82	3,102.1	-269.3	-382.1	467.5	0.00	0.00	0.00	
3,200.0	15.21	234.82	3,140.7	-275.4	-390.7	478.0	0.00	0.00	0.00	
3,240.0	15.21	234.82	3,179.3	-281.4	-399.3	488.5	0.00	0.00	0.00	
3,280.0	15.21	234.82	3,217.9	-287.5	-407.9	499.0	0.00	0.00	0.00	
3,320.0	15.21	234.82	3,256.5	-293.5	-416.4	509.5	0.00	0.00	0.00	
3,360.0	15.21	234.82	3,295.1	-299.6	-425.0	520.0	0.00	0.00	0.00	
3,400.0	15.21	234.82	3,333.7	-305.6	-433.6	530.5	0.00	0.00	0.00	
3,440.0	15.21	234.82	3,372.3	-311.7	-442.2	541.0	0.00	0.00	0.00	
3,480.0	15.21	234.82	3,410.9	-317.7	-450.7	551.5	0.00	0.00	0.00	
3,520.0	15.21	234.82	3,449.5	-323.7	-459.3	562.0	0.00	0.00	0.00	
3,560.0	15.21	234.82	3,488.1	-329.8	-467.9	572.4	0.00	0.00	0.00	
3,600.0	15.21	234.82	3,526.7	-335.8	-476.5	582.9	0.00	0.00	0.00	
3,640.0	15.21	234.82	3,565.3	-341.9	-485.1	593.4	0.00	0.00	0.00	
3,680.0	15.21	234.82	3,603.9	-347.9	-493.6	603.9	0.00	0.00	0.00	
3,720.0	15.21	234.82	3,642.5	-354.0	-502.2	614.4	0.00	0.00	0.00	
3,760.0	15.21	234.82	3,681.1	-360.0	-510.8	624.9	0.00	0.00	0.00	
3,800.0	15.21	234.82	3,719.7	-366.1	-519.4	635.4	0.00	0.00	0.00	
3,840.0	15.21	234.82	3,758.3	-372.1	-527.9	645.9	0.00	0.00	0.00	
3,880.0	15.21	234.82	3,796.9	-378.2	-536.5	656.4	0.00	0.00	0.00	
3,920.0	15.21	234.82	3,835.5	-384.2	-545.1	666.9	0.00	0.00	0.00	
3,960.0	15.21	234.82	3,874.1	-390.2	-553.7	677.4	0.00	0.00	0.00	
4,000.0	15.21	234.82	3,912.7	-396.3	-562.3	687.9	0.00	0.00	0.00	
4,040.0	15.21	234.82	3,951.3	-402.3	-570.8	698.4	0.00	0.00	0.00	
4,080.0	15.21	234.82	3,989.9	-408.4	-579.4	708.9	0.00	0.00	0.00	
4,120.0	15.21	234.82	4,028.5	-414.4	-588.0	719.4	0.00	0.00	0.00	
4,160.0	15.21	234.82	4,067.1	-420.5	-596.6	729.9	0.00	0.00	0.00	
4,200.0	15.21	234.82	4,105.7	-426.5	-605.1	740.3	0.00	0.00	0.00	

Database:	EDM den0-adp01 Server Data	Local Co-ordinate Reference:	Well RBF 14-15D
Company:	Synergy Resources	TVD Reference:	WELL @ 4794.0ft (Original Well Elev)
Project:	SEC.15-T6N-R67W	MD Reference:	WELL @ 4794.0ft (Original Well Elev)
Site:	RBF 24-15D Pad Sec.15-T6N-R67W	North Reference:	True
Well:	RBF 14-15D	Survey Calculation Method:	Minimum Curvature
Wellbore:	Wellbore #1		
Design:	Plan #1 (5-8-10)		

Planned Survey									
Measured Depth (ft)	Inclination (°)	Azimuth (°)	Vertical Depth (ft)	+N/-S (ft)	+E/-W (ft)	Vertical Section (ft)	Dogleg Rate (°/100ft)	Build Rate (°/100ft)	Turn Rate (°/100ft)
4,240.0	15.21	234.82	4,144.3	-432.6	-613.7	750.8	0.00	0.00	0.00
4,280.0	15.21	234.82	4,182.8	-438.6	-622.3	761.3	0.00	0.00	0.00
4,320.0	15.21	234.82	4,221.4	-444.7	-630.9	771.8	0.00	0.00	0.00
4,360.0	15.21	234.82	4,260.0	-450.7	-639.5	782.3	0.00	0.00	0.00
4,400.0	15.21	234.82	4,298.6	-456.7	-648.0	792.8	0.00	0.00	0.00
4,440.0	15.21	234.82	4,337.2	-462.8	-656.6	803.3	0.00	0.00	0.00
4,480.0	15.21	234.82	4,375.8	-468.8	-665.2	813.8	0.00	0.00	0.00
4,520.0	15.21	234.82	4,414.4	-474.9	-673.8	824.3	0.00	0.00	0.00
4,560.0	15.21	234.82	4,453.0	-480.9	-682.3	834.8	0.00	0.00	0.00
4,600.0	15.21	234.82	4,491.6	-487.0	-690.9	845.3	0.00	0.00	0.00
4,640.0	15.21	234.82	4,530.2	-493.0	-699.5	855.8	0.00	0.00	0.00
4,680.0	15.21	234.82	4,568.8	-499.1	-708.1	866.3	0.00	0.00	0.00
4,720.0	15.21	234.82	4,607.4	-505.1	-716.7	876.8	0.00	0.00	0.00
4,760.0	15.21	234.82	4,646.0	-511.2	-725.2	887.3	0.00	0.00	0.00
4,800.0	15.21	234.82	4,684.6	-517.2	-733.8	897.8	0.00	0.00	0.00
4,840.0	15.21	234.82	4,723.2	-523.2	-742.4	908.3	0.00	0.00	0.00
4,866.1	15.21	234.82	4,748.4	-527.2	-748.0	915.1	0.00	0.00	0.00
4,880.0	14.93	234.82	4,761.8	-529.3	-750.9	918.7	2.00	-2.00	0.00
4,920.0	14.13	234.82	4,800.6	-535.1	-759.1	928.7	2.00	-2.00	0.00
4,960.0	13.33	234.82	4,839.4	-540.5	-766.9	938.2	2.00	-2.00	0.00
5,000.0	12.53	234.82	4,878.4	-545.7	-774.2	947.2	2.00	-2.00	0.00
5,040.0	11.73	234.82	4,917.5	-550.5	-781.1	955.6	2.00	-2.00	0.00
5,080.0	10.93	234.82	4,956.7	-555.1	-787.5	963.5	2.00	-2.00	0.00
5,120.0	10.13	234.82	4,996.1	-559.3	-793.5	970.8	2.00	-2.00	0.00
5,160.0	9.33	234.82	5,035.5	-563.2	-799.0	977.5	2.00	-2.00	0.00
5,200.0	8.53	234.82	5,075.0	-566.7	-804.1	983.7	2.00	-2.00	0.00
5,240.0	7.73	234.82	5,114.6	-570.0	-808.7	989.4	2.00	-2.00	0.00
5,280.0	6.93	234.82	5,154.3	-572.9	-812.9	994.5	2.00	-2.00	0.00
5,320.0	6.13	234.82	5,194.0	-575.6	-816.6	999.1	2.00	-2.00	0.00
5,330.8	5.92	234.82	5,204.8	-576.2	-817.5	1,000.2	2.00	-2.00	0.00
PERMIT TARGET BHL 513'FSL, 503'FWL									
5,360.0	5.33	234.82	5,233.8	-577.9	-819.9	1,003.0	2.00	-2.00	0.00
5,400.0	4.53	234.82	5,273.7	-579.8	-822.7	1,006.5	2.00	-2.00	0.00
5,440.0	3.73	234.82	5,313.6	-581.5	-825.0	1,009.4	2.00	-2.00	0.00
5,480.0	2.93	234.82	5,353.5	-582.8	-826.9	1,011.7	2.00	-2.00	0.00
5,520.0	2.13	234.82	5,393.4	-583.9	-828.4	1,013.5	2.00	-2.00	0.00
5,560.0	1.33	234.82	5,433.4	-584.6	-829.4	1,014.7	2.00	-2.00	0.00
5,600.0	0.53	234.82	5,473.4	-584.9	-829.9	1,015.3	2.00	-2.00	0.00
5,626.6	0.00	0.00	5,500.0	-585.0	-830.0	1,015.4	2.00	-2.00	0.00
DRILL TARGET BHL 535'FSL, 527'FWL									
5,640.0	0.00	0.00	5,513.4	-585.0	-830.0	1,015.4	0.00	0.00	0.00
5,680.0	0.00	0.00	5,553.4	-585.0	-830.0	1,015.4	0.00	0.00	0.00
5,720.0	0.00	0.00	5,593.4	-585.0	-830.0	1,015.4	0.00	0.00	0.00
5,760.0	0.00	0.00	5,633.4	-585.0	-830.0	1,015.4	0.00	0.00	0.00
5,800.0	0.00	0.00	5,673.4	-585.0	-830.0	1,015.4	0.00	0.00	0.00
5,840.0	0.00	0.00	5,713.4	-585.0	-830.0	1,015.4	0.00	0.00	0.00
5,880.0	0.00	0.00	5,753.4	-585.0	-830.0	1,015.4	0.00	0.00	0.00
5,920.0	0.00	0.00	5,793.4	-585.0	-830.0	1,015.4	0.00	0.00	0.00
5,960.0	0.00	0.00	5,833.4	-585.0	-830.0	1,015.4	0.00	0.00	0.00
6,000.0	0.00	0.00	5,873.4	-585.0	-830.0	1,015.4	0.00	0.00	0.00
6,040.0	0.00	0.00	5,913.4	-585.0	-830.0	1,015.4	0.00	0.00	0.00
6,080.0	0.00	0.00	5,953.4	-585.0	-830.0	1,015.4	0.00	0.00	0.00
6,120.0	0.00	0.00	5,993.4	-585.0	-830.0	1,015.4	0.00	0.00	0.00
6,160.0	0.00	0.00	6,033.4	-585.0	-830.0	1,015.4	0.00	0.00	0.00

Database: EDM den0-adp01 Server Data
Company: Synergy Resources
Project: SEC.15-T6N-R67W
Site: RBF 24-15D Pad Sec.15-T6N-R67W
Well: RBF 14-15D
Wellbore: Wellbore #1
Design: Plan #1 (5-8-10)

Local Co-ordinate Reference: Well RBF 14-15D
TVD Reference: WELL @ 4794.0ft (Original Well Elev)
MD Reference: WELL @ 4794.0ft (Original Well Elev)
North Reference: True
Survey Calculation Method: Minimum Curvature

Planned Survey

Measured Depth (ft)	Inclination (°)	Azimuth (°)	Vertical Depth (ft)	+N/-S (ft)	+E/-W (ft)	Vertical Section (ft)	Dogleg Rate (°/100ft)	Build Rate (°/100ft)	Turn Rate (°/100ft)
6,200.0	0.00	0.00	6,073.4	-585.0	-830.0	1,015.4	0.00	0.00	0.00
6,240.0	0.00	0.00	6,113.4	-585.0	-830.0	1,015.4	0.00	0.00	0.00
6,280.0	0.00	0.00	6,153.4	-585.0	-830.0	1,015.4	0.00	0.00	0.00
6,320.0	0.00	0.00	6,193.4	-585.0	-830.0	1,015.4	0.00	0.00	0.00
6,360.0	0.00	0.00	6,233.4	-585.0	-830.0	1,015.4	0.00	0.00	0.00
6,400.0	0.00	0.00	6,273.4	-585.0	-830.0	1,015.4	0.00	0.00	0.00
6,440.0	0.00	0.00	6,313.4	-585.0	-830.0	1,015.4	0.00	0.00	0.00
6,480.0	0.00	0.00	6,353.4	-585.0	-830.0	1,015.4	0.00	0.00	0.00
6,520.0	0.00	0.00	6,393.4	-585.0	-830.0	1,015.4	0.00	0.00	0.00
6,560.0	0.00	0.00	6,433.4	-585.0	-830.0	1,015.4	0.00	0.00	0.00
6,600.0	0.00	0.00	6,473.4	-585.0	-830.0	1,015.4	0.00	0.00	0.00
6,640.0	0.00	0.00	6,513.4	-585.0	-830.0	1,015.4	0.00	0.00	0.00
6,680.0	0.00	0.00	6,553.4	-585.0	-830.0	1,015.4	0.00	0.00	0.00
6,720.0	0.00	0.00	6,593.4	-585.0	-830.0	1,015.4	0.00	0.00	0.00
6,760.0	0.00	0.00	6,633.4	-585.0	-830.0	1,015.4	0.00	0.00	0.00
6,800.0	0.00	0.00	6,673.4	-585.0	-830.0	1,015.4	0.00	0.00	0.00
6,826.6	0.00	0.00	6,700.0	-585.0	-830.0	1,015.4	0.00	0.00	0.00
TARGET BOX 400' X 400' 660'FSL, 652'FWL									
6,840.0	0.00	0.00	6,713.4	-585.0	-830.0	1,015.4	0.00	0.00	0.00
6,880.0	0.00	0.00	6,753.4	-585.0	-830.0	1,015.4	0.00	0.00	0.00
6,920.0	0.00	0.00	6,793.4	-585.0	-830.0	1,015.4	0.00	0.00	0.00
6,960.0	0.00	0.00	6,833.4	-585.0	-830.0	1,015.4	0.00	0.00	0.00
7,000.0	0.00	0.00	6,873.4	-585.0	-830.0	1,015.4	0.00	0.00	0.00
7,040.0	0.00	0.00	6,913.4	-585.0	-830.0	1,015.4	0.00	0.00	0.00
7,080.0	0.00	0.00	6,953.4	-585.0	-830.0	1,015.4	0.00	0.00	0.00
7,120.0	0.00	0.00	6,993.4	-585.0	-830.0	1,015.4	0.00	0.00	0.00
7,160.0	0.00	0.00	7,033.4	-585.0	-830.0	1,015.4	0.00	0.00	0.00
7,200.0	0.00	0.00	7,073.4	-585.0	-830.0	1,015.4	0.00	0.00	0.00
7,240.0	0.00	0.00	7,113.4	-585.0	-830.0	1,015.4	0.00	0.00	0.00
7,280.0	0.00	0.00	7,153.4	-585.0	-830.0	1,015.4	0.00	0.00	0.00
7,320.0	0.00	0.00	7,193.4	-585.0	-830.0	1,015.4	0.00	0.00	0.00
7,360.0	0.00	0.00	7,233.4	-585.0	-830.0	1,015.4	0.00	0.00	0.00
7,400.0	0.00	0.00	7,273.4	-585.0	-830.0	1,015.4	0.00	0.00	0.00
7,440.0	0.00	0.00	7,313.4	-585.0	-830.0	1,015.4	0.00	0.00	0.00
7,480.0	0.00	0.00	7,353.4	-585.0	-830.0	1,015.4	0.00	0.00	0.00
7,520.0	0.00	0.00	7,393.4	-585.0	-830.0	1,015.4	0.00	0.00	0.00
7,560.0	0.00	0.00	7,433.4	-585.0	-830.0	1,015.4	0.00	0.00	0.00
7,600.0	0.00	0.00	7,473.4	-585.0	-830.0	1,015.4	0.00	0.00	0.00
7,640.0	0.00	0.00	7,513.4	-585.0	-830.0	1,015.4	0.00	0.00	0.00
7,676.6	0.00	0.00	7,550.0	-585.0	-830.0	1,015.4	0.00	0.00	0.00

Database:	EDM den0-adp01 Server Data	Local Co-ordinate Reference:	Well RBF 14-15D
Company:	Synergy Resources	TVD Reference:	WELL @ 4794.0ft (Original Well Elev)
Project:	SEC.15-T6N-R67W	MD Reference:	WELL @ 4794.0ft (Original Well Elev)
Site:	RBF 24-15D Pad Sec.15-T6N-R67W	North Reference:	True
Well:	RBF 14-15D	Survey Calculation Method:	Minimum Curvature
Wellbore:	Wellbore #1		
Design:	Plan #1 (5-8-10)		

Targets									
Target Name	Dip Angle	Dip Dir.	TVD	+N/-S	+E/-W	Northing	Easting	Latitude	Longitude
- hit/miss target	(°)	(°)	(ft)	(ft)	(ft)	(ft)	(ft)		
- Shape									
DRILL TARGET BHL	0.00	0.00	5,500.0	-585.0	-830.0	1,418,684.51	3,170,483.32	40° 28' 51.863 N	104° 53' 13.692 W
- plan hits target center									
- Point									
PERMIT TARGET BH	0.00	0.00	5,200.0	-607.0	-854.0	1,418,662.36	3,170,459.52	40° 28' 51.646 N	104° 53' 14.002 W
- plan misses target center by 47.9ft at 5330.8ft MD (5204.8 TVD, -576.2 N, -817.5 E)									
- Point									
TARGET BOX 400' X	0.00	0.00	6,700.0	-460.0	-705.0	1,418,810.37	3,170,607.44	40° 28' 53.099 N	104° 53' 12.074 W
- plan misses target center by 176.8ft at 6826.6ft MD (6700.0 TVD, -585.0 N, -830.0 E)									
- Rectangle (sides W400.0 H400.0 D850.0)									

Casing Points				
Measured Depth	Vertical Depth	Name	Casing Diameter	Hole Diameter
(ft)	(ft)		(")	(")
400.0	400.0	8 5/8"	8-5/8	12-1/4



Directional

Synergy Resources

SEC.15-T6N-R67W

RBF 24-15D Pad Sec.15-T6N-R67W

RBF 14-15D

Wellbore #1

Plan #1 (5-8-10)

Anticollision Report

12 May, 2010

Company:	Synergy Resources	Local Co-ordinate Reference:	Well RBF 14-15D
Project:	SEC.15-T6N-R67W	TVD Reference:	WELL @ 4794.0ft (Original Well Elev)
Reference Site:	RBF 24-15D Pad Sec.15-T6N-R67W	MD Reference:	WELL @ 4794.0ft (Original Well Elev)
Site Error:	0.0ft	North Reference:	True
Reference Well:	RBF 14-15D	Survey Calculation Method:	Minimum Curvature
Well Error:	0.0ft	Output errors are at	2.00 sigma
Reference Wellbore	Wellbore #1	Database:	EDM den0-adp01 Server Data
Reference Design:	Plan #1 (5-8-10)	Offset TVD Reference:	Offset Datum

Reference	Plan #1 (5-8-10)		
Filter type:	NO GLOBAL FILTER: Using user defined selection & filtering criteria		
Interpolation Method:	MD Interval 100.0ft	Error Model:	ISCWSA
Depth Range:	Unlimited	Scan Method:	Closest Approach 3D
Results Limited by:	Maximum center-center distance of 2,000.0ft	Error Surface:	Elliptical Conic
Warning Levels Evaluated at:	2.00 Sigma		

Survey Tool Program	Date 5/8/2010			
From (ft)	To (ft)	Survey (Wellbore)	Tool Name	Description
0.0	7,676.6	Plan #1 (5-8-10) (Wellbore #1)	MWD	MWD - Standard

Summary						
Site Name	Reference Measured Depth (ft)	Offset Measured Depth (ft)	Distance Between Centres (ft)	Distance Between Ellipses (ft)	Separation Factor	Warning
Offset Well - Wellbore - Design						
RBF 24-15D Pad Sec.15-T6N-R67W						
RBF 15B (Vert.) - Wellbore #1 - Design #1	1,000.0	999.0	20.0	15.8	4.727	CC, ES
RBF 15B (Vert.) - Wellbore #1 - Design #1	1,100.0	1,099.0	21.1	16.4	4.516	SF
RBF 24-15D - Wellbore #1 - Plan #1 (5-8-10)	800.0	799.0	20.0	16.7	5.999	CC, ES
RBF 24-15D - Wellbore #1 - Plan #1 (5-8-10)	900.0	898.6	21.1	17.3	5.600	SF

Offset Design RBF 24-15D Pad Sec.15-T6N-R67W - RBF 15B (Vert.) - Wellbore #1 - Design #1													Offset Site Error:	0.0 ft
Survey Program: 0-MWD													Offset Well Error:	0.0 ft
Reference		Offset		Semi Major Axis			Distance							
Measured Depth (ft)	Vertical Depth (ft)	Measured Depth (ft)	Vertical Depth (ft)	Reference (ft)	Offset (ft)	Highside Toolface (°)	Offset Wellbore Centre +N/-S (ft)	+E/-W (ft)	Between Centres (ft)	Between Ellipses (ft)	Minimum Separation (ft)	Separation Factor	Warning	
0.0	0.0	0.0	0.0	0.0	0.0	-0.80	20.0	-0.3	20.1					
100.0	100.0	99.0	99.0	0.1	0.1	-0.80	20.0	-0.3	20.0	19.8	0.19	102.994		
200.0	200.0	199.0	199.0	0.3	0.3	-0.80	20.0	-0.3	20.0	19.4	0.64	31.174		
300.0	300.0	299.0	299.0	0.5	0.5	-0.80	20.0	-0.3	20.0	18.9	1.09	18.345		
400.0	400.0	399.0	399.0	0.8	0.8	-0.80	20.0	-0.3	20.0	18.5	1.54	12.997		
500.0	500.0	499.0	499.0	1.0	1.0	-0.80	20.0	-0.3	20.0	18.0	1.99	10.063		
600.0	600.0	599.0	599.0	1.2	1.2	-0.80	20.0	-0.3	20.0	17.6	2.44	8.210		
700.0	700.0	699.0	699.0	1.4	1.4	-0.80	20.0	-0.3	20.0	17.1	2.89	6.933		
800.0	800.0	799.0	799.0	1.7	1.7	-0.80	20.0	-0.3	20.0	16.7	3.34	6.000		
900.0	900.0	899.0	899.0	1.9	1.9	-0.80	20.0	-0.3	20.0	16.2	3.79	5.288		
1,000.0	1,000.0	999.0	999.0	2.1	2.1	-0.80	20.0	-0.3	20.0	15.8	4.24	4.727 CC, ES		
1,100.0	1,100.0	1,099.0	1,099.0	2.3	2.3	128.28	20.0	-0.3	21.1	16.4	4.67	4.516 SF		
1,200.0	1,199.8	1,198.8	1,198.8	2.5	2.6	137.82	20.0	-0.3	24.7	19.6	5.08	4.857		
1,300.0	1,299.5	1,298.5	1,298.5	2.7	2.8	148.38	20.0	-0.3	31.7	26.2	5.49	5.767		
1,400.0	1,398.7	1,397.7	1,397.7	3.0	3.0	156.92	20.0	-0.3	42.5	36.6	5.90	7.207		
1,500.0	1,497.5	1,496.5	1,496.5	3.2	3.2	162.97	20.0	-0.3	57.3	51.0	6.31	9.076		
1,600.0	1,595.6	1,594.6	1,594.6	3.5	3.5	167.12	20.0	-0.3	75.7	69.0	6.72	11.280		
1,700.0	1,693.1	1,692.1	1,692.1	3.9	3.7	169.97	20.0	-0.3	97.8	90.7	7.12	13.744		
1,800.0	1,789.7	1,788.7	1,788.7	4.3	3.9	172.01	20.0	-0.3	123.1	115.6	7.53	16.344		
1,900.0	1,886.2	1,885.2	1,885.2	4.8	4.1	173.41	20.0	-0.3	149.2	141.2	7.98	18.686		
2,000.0	1,982.7	1,981.7	1,981.7	5.2	4.3	174.39	20.0	-0.3	175.3	166.8	8.44	20.769		
2,100.0	2,079.2	2,078.2	2,078.2	5.7	4.5	175.12	20.0	-0.3	201.4	192.5	8.90	22.629		
2,200.0	2,175.7	2,174.7	2,174.7	6.2	4.8	175.68	20.0	-0.3	227.6	218.2	9.37	24.295		

CC - Min centre to center distance or covergent point, SF - min separation factor, ES - min ellipse separation

Company:	Synergy Resources	Local Co-ordinate Reference:	Well RBF 14-15D
Project:	SEC.15-T6N-R67W	TVD Reference:	WELL @ 4794.0ft (Original Well Elev)
Reference Site:	RBF 24-15D Pad Sec.15-T6N-R67W	MD Reference:	WELL @ 4794.0ft (Original Well Elev)
Site Error:	0.0ft	North Reference:	True
Reference Well:	RBF 14-15D	Survey Calculation Method:	Minimum Curvature
Well Error:	0.0ft	Output errors are at	2.00 sigma
Reference Wellbore	Wellbore #1	Database:	EDM den0-adp01 Server Data
Reference Design:	Plan #1 (5-8-10)	Offset TVD Reference:	Offset Datum

Offset Design RBF 24-15D Pad Sec.15-T6N-R67W - RBF 15B (Vert.) - Wellbore #1 - Design #1														Offset Site Error:	0.0 ft
Survey Program: 0-MWD														Offset Well Error:	0.0 ft
Measured Depth (ft)	Vertical Depth (ft)	Measured Depth (ft)	Vertical Depth (ft)	Reference	Offset	Semi Major Axis (ft)	Highside Toolface (°)	Offset Wellbore Centre +N/-S (ft)	Offset Wellbore Centre +E/-W (ft)	Between Centres (ft)	Between Ellipses (ft)	Minimum Separation (ft)	Separation Factor	Warning	
2,300.0	2,272.2	2,271.2	2,271.2	6.7	5.0	176.13		20.0	-0.3	253.7	243.9	9.84	25.795		
2,400.0	2,368.7	2,367.7	2,367.7	7.3	5.2	176.49		20.0	-0.3	279.9	269.6	10.31	27.150		
2,500.0	2,465.2	2,464.2	2,464.2	7.8	5.4	176.79		20.0	-0.3	306.1	295.3	10.79	28.379		
2,600.0	2,561.7	2,560.7	2,560.7	8.3	5.6	177.04		20.0	-0.3	332.3	321.1	11.27	29.498		
2,700.0	2,658.2	2,657.2	2,657.2	8.9	5.8	177.26		20.0	-0.3	358.5	346.8	11.75	30.521		
2,800.0	2,754.7	2,753.7	2,753.7	9.4	6.1	177.45		20.0	-0.3	384.7	372.5	12.23	31.459		
2,900.0	2,851.2	2,850.2	2,850.2	9.9	6.3	177.61		20.0	-0.3	410.9	398.2	12.71	32.321		
3,000.0	2,947.7	2,946.7	2,946.7	10.5	6.5	177.75		20.0	-0.3	437.2	424.0	13.20	33.116		
3,100.0	3,044.2	3,043.2	3,043.2	11.0	6.7	177.88		20.0	-0.3	463.4	449.7	13.69	33.852		
3,200.0	3,140.7	3,139.7	3,139.7	11.6	6.9	177.99		20.0	-0.3	489.6	475.4	14.18	34.535		
3,300.0	3,237.2	3,236.2	3,236.2	12.1	7.1	178.10		20.0	-0.3	515.8	501.1	14.67	35.169		
3,400.0	3,333.7	3,332.7	3,332.7	12.7	7.4	178.19		20.0	-0.3	542.0	526.9	15.16	35.761		
3,500.0	3,430.2	3,429.2	3,429.2	13.2	7.6	178.27		20.0	-0.3	568.3	552.6	15.65	36.313		
3,600.0	3,526.7	3,525.7	3,525.7	13.8	7.8	178.35		20.0	-0.3	594.5	578.3	16.14	36.830		
3,700.0	3,623.2	3,622.2	3,622.2	14.3	8.0	178.42		20.0	-0.3	620.7	604.1	16.63	37.315		
3,800.0	3,719.7	3,718.7	3,718.7	14.9	8.2	178.48		20.0	-0.3	646.9	629.8	17.13	37.770		
3,900.0	3,816.2	3,815.2	3,815.2	15.4	8.4	178.54		20.0	-0.3	673.2	655.5	17.62	38.199		
4,000.0	3,912.7	3,911.7	3,911.7	16.0	8.7	178.60		20.0	-0.3	699.4	681.3	18.12	38.603		
4,100.0	4,009.2	4,008.2	4,008.2	16.6	8.9	178.65		20.0	-0.3	725.6	707.0	18.61	38.985		
4,200.0	4,105.7	4,104.7	4,104.7	17.1	9.1	178.69		20.0	-0.3	751.8	732.7	19.11	39.345		
4,300.0	4,202.1	4,201.1	4,201.1	17.7	9.3	178.74		20.0	-0.3	778.1	758.5	19.61	39.687		
4,400.0	4,298.6	4,297.6	4,297.6	18.2	9.5	178.78		20.0	-0.3	804.3	784.2	20.10	40.011		
4,500.0	4,395.1	4,394.1	4,394.1	18.8	9.7	178.82		20.0	-0.3	830.5	809.9	20.60	40.318		
4,600.0	4,491.6	4,490.6	4,490.6	19.4	10.0	178.85		20.0	-0.3	856.8	835.7	21.10	40.611		
4,700.0	4,588.1	4,587.1	4,587.1	19.9	10.2	178.89		20.0	-0.3	883.0	861.4	21.60	40.889		
4,800.0	4,684.6	4,683.6	4,683.6	20.5	10.4	178.92		20.0	-0.3	909.2	887.1	22.09	41.154		
4,900.0	4,781.2	4,780.2	4,780.2	21.0	10.6	178.95		20.0	-0.3	935.3	912.6	22.62	41.350		
5,000.0	4,878.4	4,877.4	4,877.4	21.4	10.8	178.99		20.0	-0.3	958.7	935.5	23.16	41.397		
5,100.0	4,976.4	4,975.4	4,975.4	21.7	11.1	179.02		20.0	-0.3	978.6	955.0	23.67	41.353		
5,200.0	5,075.0	5,074.0	5,074.0	22.0	11.3	179.04		20.0	-0.3	995.2	971.1	24.14	41.226		
5,300.0	5,174.1	5,173.1	5,173.1	22.3	11.5	179.05		20.0	-0.3	1,008.3	983.7	24.58	41.021		
5,400.0	5,273.7	5,272.7	5,272.7	22.5	11.7	179.07		20.0	-0.3	1,017.9	993.0	24.98	40.743		
5,500.0	5,373.5	5,372.5	5,372.5	22.6	11.9	179.07		20.0	-0.3	1,024.1	998.7	25.35	40.395		
5,600.0	5,473.4	5,472.4	5,472.4	22.8	12.2	179.08		20.0	-0.3	1,026.8	1,001.1	25.68	39.980		
5,700.0	5,573.4	5,572.4	5,572.4	22.9	12.4	53.90		20.0	-0.3	1,026.9	1,000.8	26.06	39.409		
5,800.0	5,673.4	5,672.4	5,672.4	23.0	12.6	53.90		20.0	-0.3	1,026.9	1,000.4	26.45	38.819		
5,900.0	5,773.4	5,772.4	5,772.4	23.1	12.8	53.90		20.0	-0.3	1,026.9	1,000.0	26.85	38.245		
6,000.0	5,873.4	5,872.4	5,872.4	23.2	13.1	53.90		20.0	-0.3	1,026.9	999.6	27.25	37.686		
6,100.0	5,973.4	5,972.4	5,972.4	23.3	13.3	53.90		20.0	-0.3	1,026.9	999.2	27.65	37.140		
6,200.0	6,073.4	6,072.4	6,072.4	23.4	13.5	53.90		20.0	-0.3	1,026.9	998.8	28.05	36.609		
6,300.0	6,173.4	6,172.4	6,172.4	23.5	13.7	53.90		20.0	-0.3	1,026.9	998.4	28.45	36.091		
6,400.0	6,273.4	6,272.4	6,272.4	23.6	14.0	53.90		20.0	-0.3	1,026.9	998.0	28.86	35.586		
6,500.0	6,373.4	6,372.4	6,372.4	23.8	14.2	53.90		20.0	-0.3	1,026.9	997.6	29.26	35.093		
6,600.0	6,473.4	6,472.4	6,472.4	23.9	14.4	53.90		20.0	-0.3	1,026.9	997.2	29.67	34.612		
6,700.0	6,573.4	6,572.4	6,572.4	24.0	14.6	53.90		20.0	-0.3	1,026.9	996.8	30.08	34.143		
6,800.0	6,673.4	6,672.4	6,672.4	24.1	14.9	53.90		20.0	-0.3	1,026.9	996.4	30.48	33.686		
6,900.0	6,773.4	6,772.4	6,772.4	24.2	15.1	53.90		20.0	-0.3	1,026.9	996.0	30.89	33.239		
7,000.0	6,873.4	6,872.4	6,872.4	24.4	15.3	53.90		20.0	-0.3	1,026.9	995.6	31.30	32.803		
7,100.0	6,973.4	6,972.4	6,972.4	24.5	15.5	53.90		20.0	-0.3	1,026.9	995.2	31.72	32.377		
7,200.0	7,073.4	7,072.4	7,072.4	24.6	15.8	53.90		20.0	-0.3	1,026.9	994.8	32.13	31.961		
7,300.0	7,173.4	7,172.4	7,172.4	24.8	16.0	53.90		20.0	-0.3	1,026.9	994.4	32.54	31.555		
7,400.0	7,273.4	7,272.4	7,272.4	24.9	16.2	53.90		20.0	-0.3	1,026.9	993.9	32.96	31.158		

CC - Min centre to center distance or covergent point, SF - min separation factor, ES - min ellipse separation



ENSIGN DIRECTIONAL

Anticollision Report

Company:	Synergy Resources	Local Co-ordinate Reference:	Well RBF 14-15D
Project:	SEC.15-T6N-R67W	TVD Reference:	WELL @ 4794.0ft (Original Well Elev)
Reference Site:	RBF 24-15D Pad Sec.15-T6N-R67W	MD Reference:	WELL @ 4794.0ft (Original Well Elev)
Site Error:	0.0ft	North Reference:	True
Reference Well:	RBF 14-15D	Survey Calculation Method:	Minimum Curvature
Well Error:	0.0ft	Output errors are at	2.00 sigma
Reference Wellbore	Wellbore #1	Database:	EDM den0-adp01 Server Data
Reference Design:	Plan #1 (5-8-10)	Offset TVD Reference:	Offset Datum

Offset Design RBF 24-15D Pad Sec.15-T6N-R67W - RBF 15B (Vert.) - Wellbore #1 - Design #1													Offset Site Error:	0.0 ft
Survey Program: 0-MWD													Offset Well Error:	0.0 ft
Reference		Offset		Semi Major Axis		Highside Toolface (°)	Distance		Minimum Separation (ft)	Separation Factor	Warning			
Measured Depth (ft)	Vertical Depth (ft)	Measured Depth (ft)	Vertical Depth (ft)	Reference (ft)	Offset (ft)		Offset Wellbore Centre +N/-S (ft)	+E/-W (ft)						
7,500.0	7,373.4	7,372.4	7,372.4	25.0	16.4	53.90	20.0	-0.3	1,026.9	993.5	33.37	30.771		
7,600.0	7,473.4	7,472.4	7,472.4	25.1	16.7	53.90	20.0	-0.3	1,026.9	993.1	33.79	30.392		
7,676.6	7,550.0	7,549.0	7,549.0	25.2	16.8	53.90	20.0	-0.3	1,026.9	992.8	34.11	30.107		

ENSIGN Directional

ENSIGN DIRECTIONAL Anticollision Report

Company: Synergy Resources
Project: SEC.15-T6N-R67W
Reference Site: RBF 24-15D Pad Sec.15-T6N-R67W
Site Error: 0.0ft
Reference Well: RBF 14-15D
Well Error: 0.0ft
Reference Wellbore: Wellbore #1
Reference Design: Plan #1 (5-8-10)

Local Co-ordinate Reference: Well RBF 14-15D
TVD Reference: WELL @ 4794.0ft (Original Well Elev)
MD Reference: WELL @ 4794.0ft (Original Well Elev)
North Reference: True
Survey Calculation Method: Minimum Curvature
Output errors are at 2.00 sigma
Database: EDM den0-adp01 Server Data
Offset TVD Reference: Offset Datum

Offset Design RBF 24-15D Pad Sec.15-T6N-R67W - RFB 24-15D - Wellbore #1 - Plan #1 (5-8-10)													Offset Site Error:	0.0 ft
Survey Program: 0-MWD													Offset Well Error:	0.0 ft
Reference Measured Depth (ft)	Vertical Depth (ft)	Offset Measured Depth (ft)	Vertical Depth (ft)	Semi Major Axis		Highside Toolface (°)	Offset Wellbore Centre		Distance		Minimum Separation (ft)	Separation Factor	Warning	
				Reference (ft)	Offset (ft)		+N/-S (ft)	+E/-W (ft)	Between Centres (ft)	Between Ellipses (ft)				
0.0	0.0	0.0	0.0	0.0	0.0	180.00	-20.0	0.0	20.1					
100.0	100.0	99.0	99.0	0.1	0.1	180.00	-20.0	0.0	20.0	19.8	0.19	102.984		
200.0	200.0	199.0	199.0	0.3	0.3	180.00	-20.0	0.0	20.0	19.4	0.64	31.171		
300.0	300.0	299.0	299.0	0.5	0.5	180.00	-20.0	0.0	20.0	18.9	1.09	18.343		
400.0	400.0	399.0	399.0	0.8	0.8	180.00	-20.0	0.0	20.0	18.5	1.54	12.995		
500.0	500.0	499.0	499.0	1.0	1.0	180.00	-20.0	0.0	20.0	18.0	1.99	10.062		
600.0	600.0	599.0	599.0	1.2	1.2	180.00	-20.0	0.0	20.0	17.6	2.44	8.209		
700.0	700.0	699.0	699.0	1.4	1.4	180.00	-20.0	0.0	20.0	17.1	2.89	6.932		
800.0	800.0	799.0	799.0	1.7	1.7	180.00	-20.0	0.0	20.0	16.7	3.34	5.999 CC, ES		
900.0	900.0	898.6	898.5	1.9	1.9	176.30	-21.0	1.4	21.1	17.3	3.77	5.600 SF		
1,000.0	1,000.0	997.9	997.7	2.1	2.1	167.17	-24.1	5.5	24.8	20.6	4.18	5.920		
1,100.0	1,100.0	1,096.6	1,096.1	2.3	2.3	-80.67	-29.2	12.3	31.5	26.9	4.59	6.862		
1,200.0	1,199.8	1,194.4	1,193.1	2.5	2.5	-94.79	-36.2	21.8	42.7	37.7	4.98	8.566		
1,300.0	1,299.5	1,290.7	1,288.3	2.7	2.8	-106.04	-45.0	33.7	59.7	54.3	5.40	11.056		
1,400.0	1,398.7	1,385.1	1,381.1	3.0	3.1	-113.94	-55.5	47.9	82.6	76.8	5.83	14.158		
1,500.0	1,497.5	1,477.4	1,471.1	3.2	3.4	-119.33	-67.5	64.1	111.2	104.9	6.30	17.653		
1,600.0	1,595.6	1,568.8	1,559.7	3.5	3.8	-123.13	-80.9	82.2	145.0	138.2	6.80	21.312		
1,700.0	1,693.1	1,661.3	1,649.2	3.9	4.2	-126.19	-94.8	101.0	181.7	174.4	7.33	24.771		
1,800.0	1,789.7	1,752.8	1,737.7	4.3	4.6	-128.94	-108.6	119.5	220.7	212.8	7.91	27.900		
1,900.0	1,886.2	1,844.1	1,826.1	4.8	5.1	-131.27	-122.3	138.0	260.5	252.0	8.52	30.563		
2,000.0	1,982.7	1,935.4	1,914.4	5.2	5.5	-132.99	-136.0	156.5	300.6	291.4	9.16	32.821		
2,100.0	2,079.2	2,026.7	2,002.8	5.7	6.0	-134.30	-149.7	175.1	340.8	331.0	9.81	34.739		
2,200.0	2,175.7	2,118.0	2,091.1	6.2	6.5	-135.33	-163.4	193.6	381.2	370.7	10.48	36.380		
2,300.0	2,272.2	2,209.3	2,179.4	6.7	7.0	-136.17	-177.2	212.1	421.6	410.5	11.16	37.794		
2,400.0	2,368.7	2,300.6	2,267.8	7.3	7.4	-136.86	-190.9	230.6	462.2	450.3	11.84	39.019		
2,500.0	2,465.2	2,391.9	2,356.1	7.8	7.9	-137.44	-204.6	249.1	502.7	490.2	12.54	40.087		
2,600.0	2,561.7	2,483.2	2,444.5	8.3	8.4	-137.94	-218.3	267.6	543.3	530.1	13.24	41.026		
2,700.0	2,658.2	2,574.5	2,532.8	8.9	8.9	-138.36	-232.0	286.1	583.9	570.0	13.95	41.856		
2,800.0	2,754.7	2,665.8	2,621.1	9.4	9.4	-138.73	-245.7	304.7	624.6	609.9	14.66	42.593		
2,900.0	2,851.2	2,757.1	2,709.5	9.9	9.8	-139.06	-259.5	323.2	665.3	649.9	15.38	43.252		
3,000.0	2,947.7	2,848.4	2,797.8	10.5	10.3	-139.34	-273.2	341.7	705.9	689.8	16.10	43.843		
3,100.0	3,044.2	2,939.7	2,886.2	11.0	10.8	-139.60	-286.9	360.2	746.6	729.8	16.83	44.376		
3,200.0	3,140.7	3,031.0	2,974.5	11.6	11.3	-139.83	-300.6	378.7	787.4	769.8	17.55	44.859		
3,300.0	3,237.2	3,122.3	3,062.8	12.1	11.8	-140.04	-314.3	397.2	828.1	809.8	18.28	45.298		
3,400.0	3,333.7	3,213.6	3,151.2	12.7	12.3	-140.22	-328.0	415.7	868.8	849.8	19.01	45.699		
3,500.0	3,430.2	3,304.9	3,239.5	13.2	12.8	-140.40	-341.8	434.3	909.5	889.8	19.74	46.066		
3,600.0	3,526.7	3,396.2	3,327.9	13.8	13.3	-140.55	-355.5	452.8	950.3	929.8	20.48	46.403		
3,700.0	3,623.2	3,487.5	3,416.2	14.3	13.8	-140.70	-369.2	471.3	991.0	969.8	21.21	46.714		
3,800.0	3,719.7	3,578.7	3,504.6	14.9	14.3	-140.83	-382.9	489.8	1,031.8	1,009.8	21.95	47.001		
3,900.0	3,816.2	3,670.0	3,592.9	15.4	14.8	-140.95	-396.6	508.3	1,072.5	1,049.8	22.69	47.267		
4,000.0	3,912.7	3,761.3	3,681.2	16.0	15.3	-141.06	-410.3	526.8	1,113.3	1,089.9	23.43	47.514		
4,100.0	4,009.2	3,852.6	3,769.6	16.6	15.8	-141.17	-424.0	545.3	1,154.0	1,129.9	24.17	47.744		
4,200.0	4,105.7	3,943.9	3,857.9	17.1	16.3	-141.27	-437.8	563.9	1,194.8	1,169.9	24.91	47.958		
4,300.0	4,202.1	4,035.2	3,946.3	17.7	16.8	-141.36	-451.5	582.4	1,235.6	1,209.9	25.66	48.159		
4,400.0	4,298.6	4,126.5	4,034.6	18.2	17.3	-141.44	-465.2	600.9	1,276.3	1,249.9	26.40	48.347		
4,500.0	4,395.1	4,217.8	4,122.9	18.8	17.8	-141.52	-478.9	619.4	1,317.1	1,290.0	27.14	48.523		
4,600.0	4,491.6	4,309.1	4,211.3	19.4	18.3	-141.60	-492.6	637.9	1,357.9	1,330.0	27.89	48.689		
4,700.0	4,588.1	4,415.8	4,314.6	19.9	18.8	-141.69	-506.5	659.4	1,398.5	1,369.9	28.66	48.790		
4,800.0	4,684.6	4,507.8	4,406.0	20.5	19.3	-141.95	-528.1	685.8	1,436.3	1,406.8	29.47	48.737		
4,900.0	4,781.2	4,603.6	4,503.7	21.0	19.8	-142.55	-543.3	706.3	1,469.7	1,439.5	30.26	48.562		
5,000.0	4,878.4	4,695.7	4,588.0	21.4	20.2	-143.42	-553.4	719.9	1,496.8	1,465.8	31.00	48.279		
5,100.0	4,976.4	5,065.1	4,957.1	21.7	20.4	-144.26	-557.8	725.9	1,516.6	1,485.0	31.64	47.927		

CC - Min centre to center distance or covergent point, SF - min separation factor, ES - min ellipse separation

Company:	Synergy Resources	Local Co-ordinate Reference:	Well RBF 14-15D
Project:	SEC.15-T6N-R67W	TVD Reference:	WELL @ 4794.0ft (Original Well Elev)
Reference Site:	RBF 24-15D Pad Sec.15-T6N-R67W	MD Reference:	WELL @ 4794.0ft (Original Well Elev)
Site Error:	0.0ft	North Reference:	True
Reference Well:	RBF 14-15D	Survey Calculation Method:	Minimum Curvature
Well Error:	0.0ft	Output errors are at	2.00 sigma
Reference Wellbore	Wellbore #1	Database:	EDM den0-adp01 Server Data
Reference Design:	Plan #1 (5-8-10)	Offset TVD Reference:	Offset Datum

Offset Design RBF 24-15D Pad Sec.15-T6N-R67W - RFB 24-15D - Wellbore #1 - Plan #1 (5-8-10)														Offset Site Error:	0.0 ft
Survey Program: 0-MWD														Offset Well Error:	0.0 ft
Measured Depth (ft)	Vertical Depth (ft)	Measured Depth (ft)	Vertical Depth (ft)	Reference	Offset	Semi Major Axis (ft)	Highside Toolface (°)	Offset Wellbore Centre +N/-S (ft)	+E/-W (ft)	Distance Between Centres (ft)	Between Ellipses (ft)	Minimum Separation (ft)	Separation Factor	Warning	
5,200.0	5,075.0	5,181.9	5,074.0	22.0	20.6	-144.85		-558.0	726.2	1,530.3	1,498.2	32.14	47.607		
5,300.0	5,174.1	5,281.1	5,173.1	22.3	20.7	-145.25		-558.0	726.2	1,541.1	1,508.5	32.57	47.317		
5,400.0	5,273.7	5,380.6	5,272.7	22.5	20.8	-145.55		-558.0	726.2	1,549.0	1,516.1	32.95	47.015		
5,500.0	5,373.5	5,480.4	5,372.5	22.6	20.9	-145.73		-558.0	726.2	1,554.1	1,520.8	33.28	46.696		
5,600.0	5,473.4	5,580.4	5,472.4	22.8	21.0	-145.81		-558.0	726.2	1,556.3	1,522.8	33.57	46.360		
5,700.0	5,573.4	5,680.4	5,572.4	22.9	21.1	89.01		-558.0	726.2	1,556.4	1,522.6	33.85	45.985		
5,800.0	5,673.4	5,780.4	5,672.4	23.0	21.2	89.01		-558.0	726.2	1,556.4	1,522.3	34.12	45.615		
5,900.0	5,773.4	5,880.4	5,772.4	23.1	21.3	89.01		-558.0	726.2	1,556.4	1,522.0	34.40	45.246		
6,000.0	5,873.4	5,980.4	5,872.4	23.2	21.5	89.01		-558.0	726.2	1,556.4	1,521.8	34.68	44.879		
6,100.0	5,973.4	6,080.4	5,972.4	23.3	21.6	89.01		-558.0	726.2	1,556.4	1,521.5	34.97	44.512		
6,200.0	6,073.4	6,180.4	6,072.4	23.4	21.7	89.01		-558.0	726.2	1,556.4	1,521.2	35.26	44.148		
6,300.0	6,173.4	6,280.4	6,172.4	23.5	21.8	89.01		-558.0	726.2	1,556.4	1,520.9	35.55	43.785		
6,400.0	6,273.4	6,380.4	6,272.4	23.6	22.0	89.01		-558.0	726.2	1,556.4	1,520.6	35.84	43.424		
6,500.0	6,373.4	6,480.4	6,372.4	23.8	22.1	89.01		-558.0	726.2	1,556.4	1,520.3	36.14	43.066		
6,600.0	6,473.4	6,580.4	6,472.4	23.9	22.2	89.01		-558.0	726.2	1,556.4	1,520.0	36.44	42.709		
6,700.0	6,573.4	6,680.4	6,572.4	24.0	22.3	89.01		-558.0	726.2	1,556.4	1,519.7	36.75	42.355		
6,800.0	6,673.4	6,780.4	6,672.4	24.1	22.5	89.01		-558.0	726.2	1,556.4	1,519.4	37.05	42.004		
6,900.0	6,773.4	6,880.4	6,772.4	24.2	22.6	89.01		-558.0	726.2	1,556.4	1,519.1	37.37	41.655		
7,000.0	6,873.4	6,980.4	6,872.4	24.4	22.8	89.01		-558.0	726.2	1,556.4	1,518.8	37.68	41.308		
7,100.0	6,973.4	7,080.4	6,972.4	24.5	22.9	89.01		-558.0	726.2	1,556.4	1,518.4	37.99	40.965		
7,200.0	7,073.4	7,180.4	7,072.4	24.6	23.0	89.01		-558.0	726.2	1,556.4	1,518.1	38.31	40.624		
7,300.0	7,173.4	7,280.4	7,172.4	24.8	23.2	89.01		-558.0	726.2	1,556.4	1,517.8	38.63	40.286		
7,400.0	7,273.4	7,380.4	7,272.4	24.9	23.3	89.01		-558.0	726.2	1,556.4	1,517.5	38.96	39.952		
7,500.0	7,373.4	7,480.4	7,372.4	25.0	23.4	89.01		-558.0	726.2	1,556.4	1,517.1	39.28	39.620		
7,600.0	7,473.4	7,580.4	7,472.4	25.1	23.6	89.01		-558.0	726.2	1,556.4	1,516.8	39.61	39.291		
7,676.6	7,550.0	7,656.9	7,549.0	25.2	23.7	89.01		-558.0	726.2	1,556.4	1,516.6	39.87	39.042		

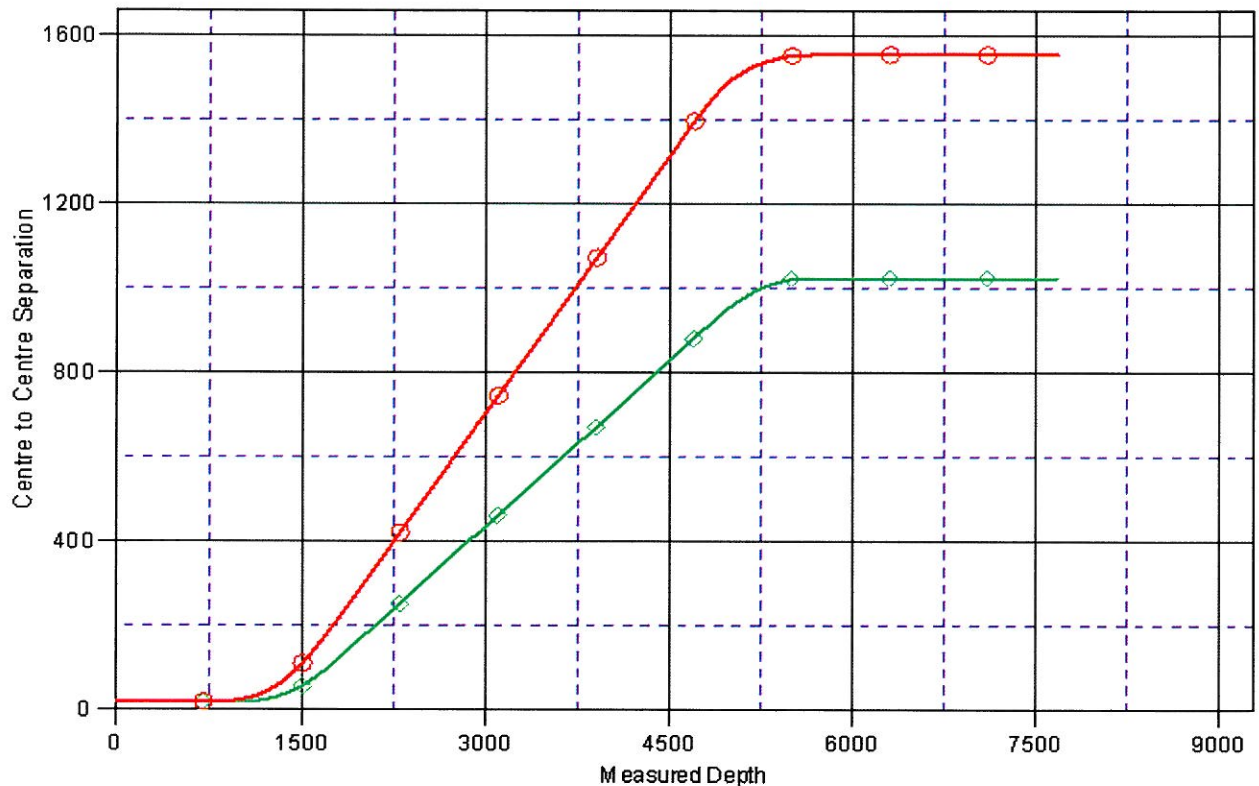
1
 2
 3
 4
 5
 6
 7
 8
 9
 10
 11
 12
 13
 14
 15
 16
 17
 18
 19
 20
 21
 22
 23
 24
 25
 26
 27
 28
 29
 30
 31
 32
 33
 34
 35
 36
 37
 38
 39
 40
 41
 42
 43
 44
 45
 46
 47
 48
 49
 50
 51
 52
 53
 54
 55
 56
 57
 58
 59
 60
 61
 62
 63
 64
 65
 66
 67
 68
 69
 70
 71
 72
 73
 74
 75
 76
 77
 78
 79
 80
 81
 82
 83
 84
 85
 86
 87
 88
 89
 90
 91
 92
 93
 94
 95
 96
 97
 98
 99
 100

Company: Synergy Resources
Project: SEC.15-T6N-R67W
Reference Site: RBF 24-15D Pad Sec.15-T6N-R67W
Site Error: 0.0ft
Reference Well: RBF 14-15D
Well Error: 0.0ft
Reference Wellbore: Wellbore #1
Reference Design: Plan #1 (5-8-10)

Local Co-ordinate Reference: Well RBF 14-15D
TVD Reference: WELL @ 4794.0ft (Original Well Elev)
MD Reference: WELL @ 4794.0ft (Original Well Elev)
North Reference: True
Survey Calculation Method: Minimum Curvature
Output errors are at: 2.00 sigma
Database: EDM den0-adp01 Server Data
Offset TVD Reference: Offset Datum

Reference Depths are relative to WELL @ 4794.0ft (Original Well Elev) Coordinates are relative to: RBF 14-15D
 Offset Depths are relative to Offset Datum
 Central Meridian is 105° 30' 0.000 W °
 Coordinate System is US State Plane 1983, Colorado Northern Zone
 Grid Convergence at Surface is: 0.40°

Ladder Plot



LEGEND

RBF 15 B (Vert.), Wellbore #1, Design #1 VD RBF 24-15D, Wellbore #1, Plan #1 (5-8-10) VD

Company: Synergy Resources
Project: SEC.15-T6N-R67W
Reference Site: RBF 24-15D Pad Sec.15-T6N-R67W
Site Error: 0.0ft
Reference Well: RBF 14-15D
Well Error: 0.0ft
Reference Wellbore: Wellbore #1
Reference Design: Plan #1 (5-8-10)

Local Co-ordinate Reference: Well RBF 14-15D
TVD Reference: WELL @ 4794.0ft (Original Well Elev)
MD Reference: WELL @ 4794.0ft (Original Well Elev)
North Reference: True
Survey Calculation Method: Minimum Curvature
Output errors are at 2.00 sigma
Database: EDM den0-adp01 Server Data
Offset TVD Reference: Offset Datum

Reference Depths are relative to WELL @ 4794.0ft (Original Well Elev) Coordinates are relative to: RBF 14-15D

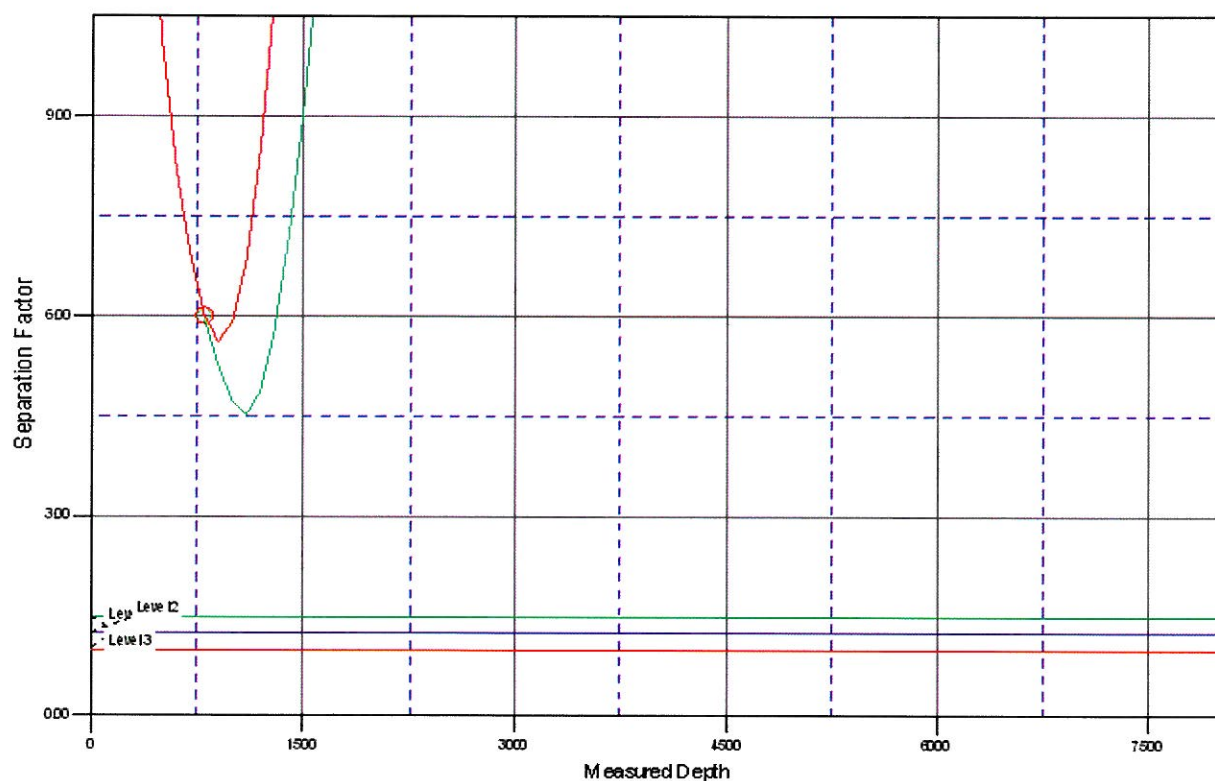
Offset Depths are relative to Offset Datum

Coordinate System is US State Plane 1983, Colorado Northern Zone

Central Meridian is 105° 30' 0.000 W °

Grid Convergence at Surface is: 0.40°

Separation Factor Plot



LEGEND

RBF 15B (Vert.), Wellbore #1, Design #1 \VD RBF 24-15D, Wellbore #1, Plan #1 (5-8-10) \VD