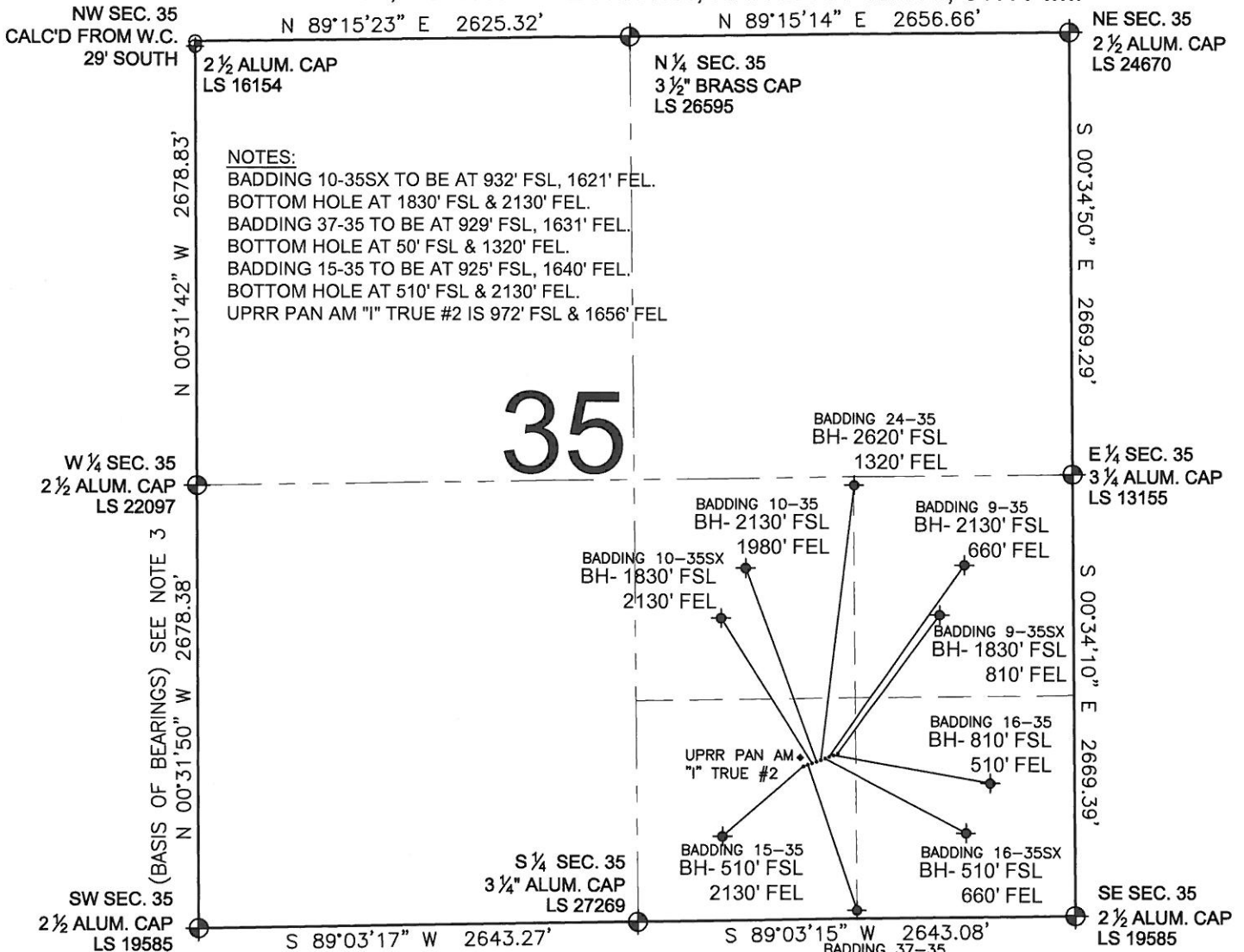


PAD DRAWING - BADDING 9 PAD

SECTION 35, TOWNSHIP 2 NORTH, RANGE 66 WEST, 6TH P.M.



NOTES:

BADDING 10-35SX TO BE AT 932' FSL, 1621' FEL.
 BOTTOM HOLE AT 1830' FSL & 2130' FEL.
 BADDING 37-35 TO BE AT 929' FSL, 1631' FEL.
 BOTTOM HOLE AT 50' FSL & 1320' FEL.
 BADDING 15-35 TO BE AT 925' FSL, 1640' FEL.
 BOTTOM HOLE AT 510' FSL & 2130' FEL.
 UPRR PAN AM "I" TRUE #2 IS 972' FSL & 1656' FEL

35

LEGEND

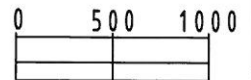
- = EXISTING MONUMENT
- ◆ = BOTTOM HOLE
- BH= BOTTOM HOLE
- = PROPOSED WELL
- ◆ = EXISTING WELL

NOTES:

- THIS SURVEY WAS DONE BY GPS METHODS AND CONFORMS TO THE MINIMUM STANDARDS SET BY THE C.O.G.C.C., RULE NO. 215
- ELEVATIONS SHOWN AT THE WELL HEAD, AS WELL AS HORIZONTAL CONTROL, ARE BASED ON GPS-RTK VALUES DERIVED FROM DOING 2-HOUR STATIC GPS SESSIONS AND REDUCTIONS USING O.P.U.S. SOLUTIONS.
 VERTICAL = NAVD88; HORIZONTAL = NAD83/92
- THE BEARINGS SHOWN HEREON ARE BASED ON GPS OBSERVATIONS BETWEEN THE MONUMENTS SHOWN HEREON AS FOUND ON THE FIELD DATE BELOW.
- DISTANCES SHOWN ARE AT GROUND LEVEL, AS MEASURED IN THE FIELD, WITH TIES TO WELLS MEASURED AT A PERPENDICULAR TO SECTION LINES.

NOTES:

BADDING 9-35SX TO BE AT 952' FSL, 1565' FEL.
 BOTTOM HOLE AT 1830' FSL & 810' FEL.
 BADDING 16-35 TO BE AT 948' FSL, 1574' FEL.
 BOTTOM HOLE AT 810' FSL & 510' FEL.
 BADDING 9-35 TO BE AT 945' FSL, 1583' FEL.
 BOTTOM HOLE AT 2130' FSL & 660' FEL.
 BADDING 16-35SX TO BE AT 942' FSL, 1593' FEL.
 BOTTOM HOLE AT 510' FSL & 660' FEL.
 BADDING 24-35 TO BE AT 938' FSL, 1602' FEL.
 BOTTOM HOLE AT 2620' FSL & 1320' FEL.
 BADDING 10-35 TO BE AT 935' FSL, 1612' FEL.
 BOTTOM HOLE AT 2130' FSL & 1980' FEL.



SCALE: 1"=1000'

REVISIONS

INITIAL	DATE

PREPARED BY:

PFS

Petroleum Field Services, LLC
 1801 W. 13th Ave.
 Denver, CO 80204



KERR-MCGEE OIL & GAS ONSHORE LP

FIELD DATE:
04-27-10

DRAWING DATE:
05-07-10

BY:
SMF

PAD NAME:
BADDING 9 PAD

SURFACE LOCATION:

WELD COUNTY, COLORADO
 SW 1/4 SE 1/4, SEC. 35, T2N, R66W