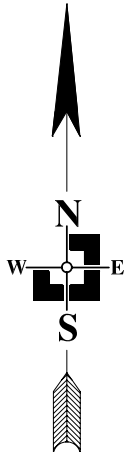
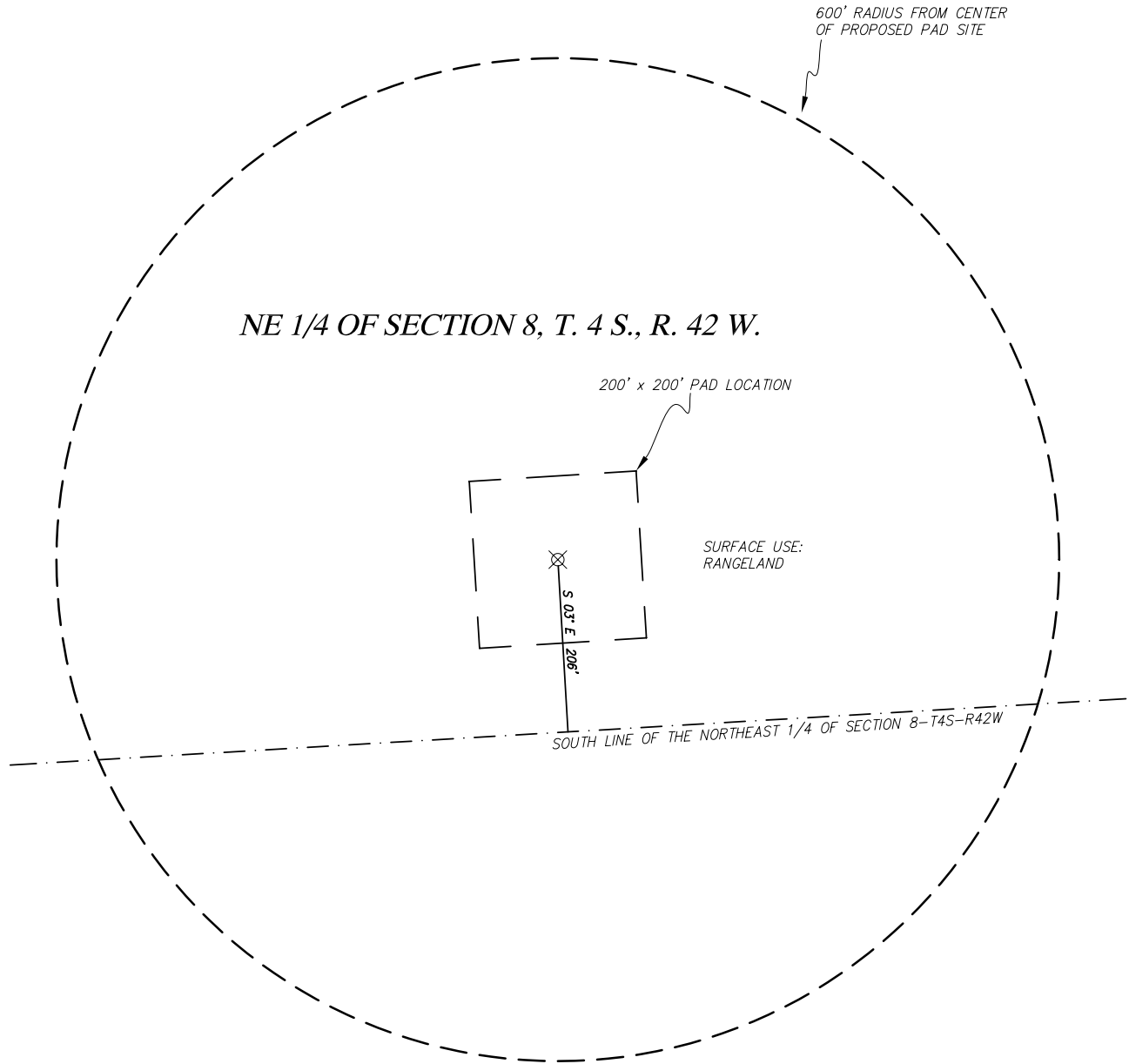


# SCHLEPP #32-08 4S-42W

## LOCATION DRAWING

YUMA COUNTY, COLORADO  
MARCH 26, 2010



### LEGEND

- ⊗ PROPOSED WELL LOCATION
- SECTION LINE

### NOTE:

- NEAREST RAILROAD - 24 +/- MILES TO NORTH
- NEAREST RIVER - SOUTH FORK OF REPUBLICAN RIVER - 5.1 +/- MILES SOUTHEAST
- NEAREST BODY OF WATER - BONNY RESERVOIR - 8.2 MILES SOUTHWEST

SCALE 1" = 200'



THREE CORNERS SURVEYING AND MAPPING, LLC  
PO Box 463; 312 Main Street  
Wray, CO 80758  
970-332-4133  
3cornerssurveying@centurytel.net

