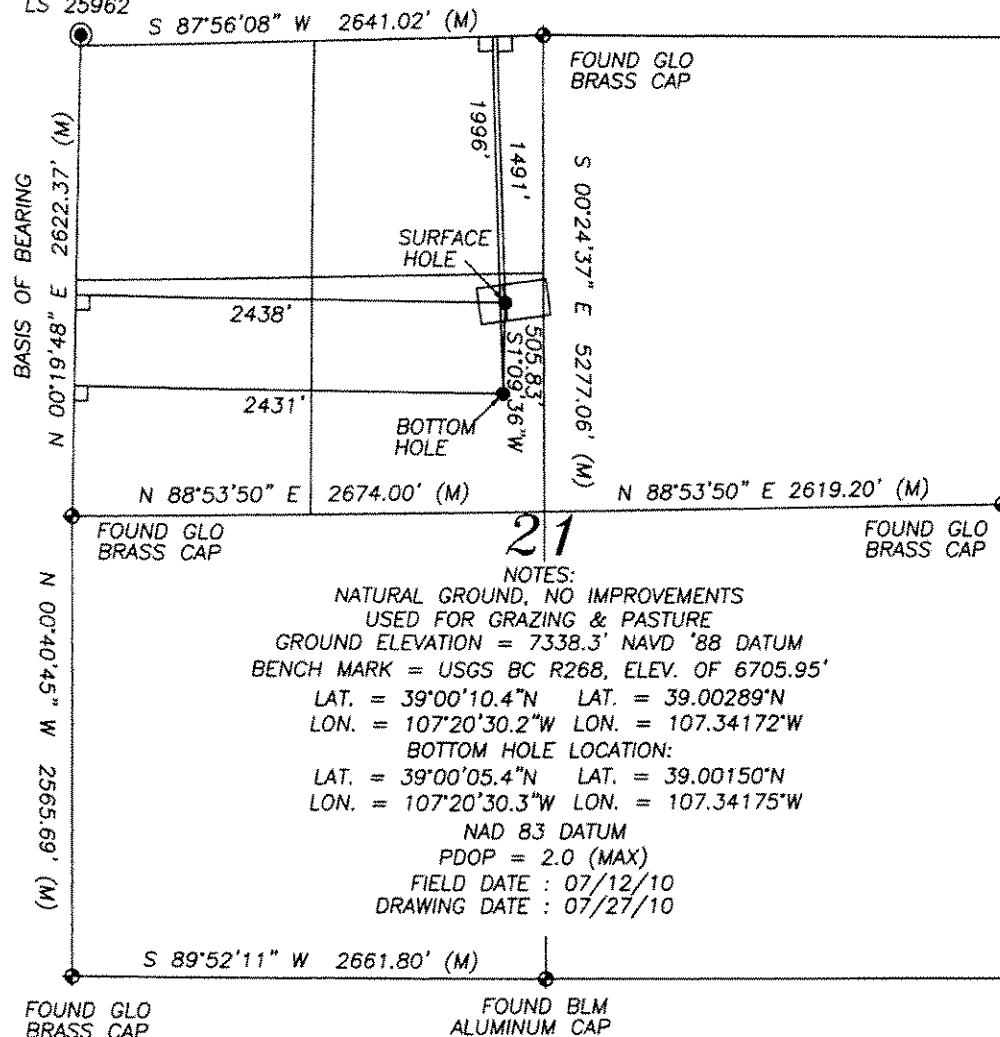


60' WC
FOUND ALUMINUM CAP
LS 25962



21
NOTES:
NATURAL GROUND, NO IMPROVEMENTS
USED FOR GRAZING & PASTURE
GROUND ELEVATION = 7338.3' NAVD '88 DATUM
BENCH MARK = USGS BC R268, ELEV. OF 6705.95'
LAT. = 39°00'10.4"N LAT. = 39.00289°N
LON. = 107°20'30.2"W LON. = 107.34172°W
BOTTOM HOLE LOCATION:
LAT. = 39°00'05.4"N LAT. = 39.00150°N
LON. = 107°20'30.3"W LON. = 107.34175°W
NAD 83 DATUM
PDOP = 2.0 (MAX)
FIELD DATE : 07/12/10
DRAWING DATE : 07/27/10



GRAPHIC SCALE

1" = 1000 U.S. SURVEY FEET

LEGEND

- ◆ FOUND GLO BRASS CAP ON STEEL POST
- FOUND MONUMENT SET BY OTHERS AS NOTED
- ⊠ FOUND ORIGINAL STONE
- WELL HEAD
- (M) MEASURED IN FIELD
- (CALC) CALCULATED LINE
- L 90° SYMBOL
- WC WITNESS CORNER
- E- ELECTRIC POWER LINE

BASIS OF BEARING:

THE LINE FROM THE W1/4 CORNER TO THE NW CORNER OF SECTION 21, TOWNSHIP 12 SOUTH, RANGE 89 WEST, 6TH P.M., WAS ASSUMED TO BEAR N00°19'48"E AS MONUMENTED AND SHOWN HEREON.

CERTIFICATE OF SURVEY:

I, DAVID G. NICEWICZ, A REGISTERED PROFESSIONAL LAND SURVEYOR IN THE STATE OF COLORADO, DO HEREBY CERTIFY THAT THE SURVEY REPRESENTED BY THIS PLAT WAS MADE UNDER MY DIRECTION AND SUPERVISION AND THAT THIS PLAT ACCURATELY REPRESENTS THIS SURVEY.

DAVID G. NICEWICZ, P.L.S. NO. 24985

GAS WELL LOCATION

VOLK 12-89-21 #1

LOCATED IN S. 21, T. 12 S., R. 89 W., 6th P.M.
GUNNISON COUNTY, COLORADO

SURVEYED BY	DATE	E. SCHAAF AND ASSOC., INC.	
DGN	07/27/10	340 PALMER ST., DELTA, CO. 81416	
DRAWN BY	SCALE	ACCT. NO.	
DGN	1"=1000'	WE10155SG	SG INT

E. SCHAAF AND ASSOC., INC. OF DELTA, COLORADO, has in accordance with a request from ERIC SANFORD, for SG INTERESTS I, LTD, determined the bottom hole location of VOLK 12-89-21 #1 to be 1996' FNL & 2431' FWL and the surface hole to be 1491' FNL and 2438' FWL of Section 21, Township 12 South, Range 89 West, of the Sixth Principal Meridian, Gunnison County, Colorado.