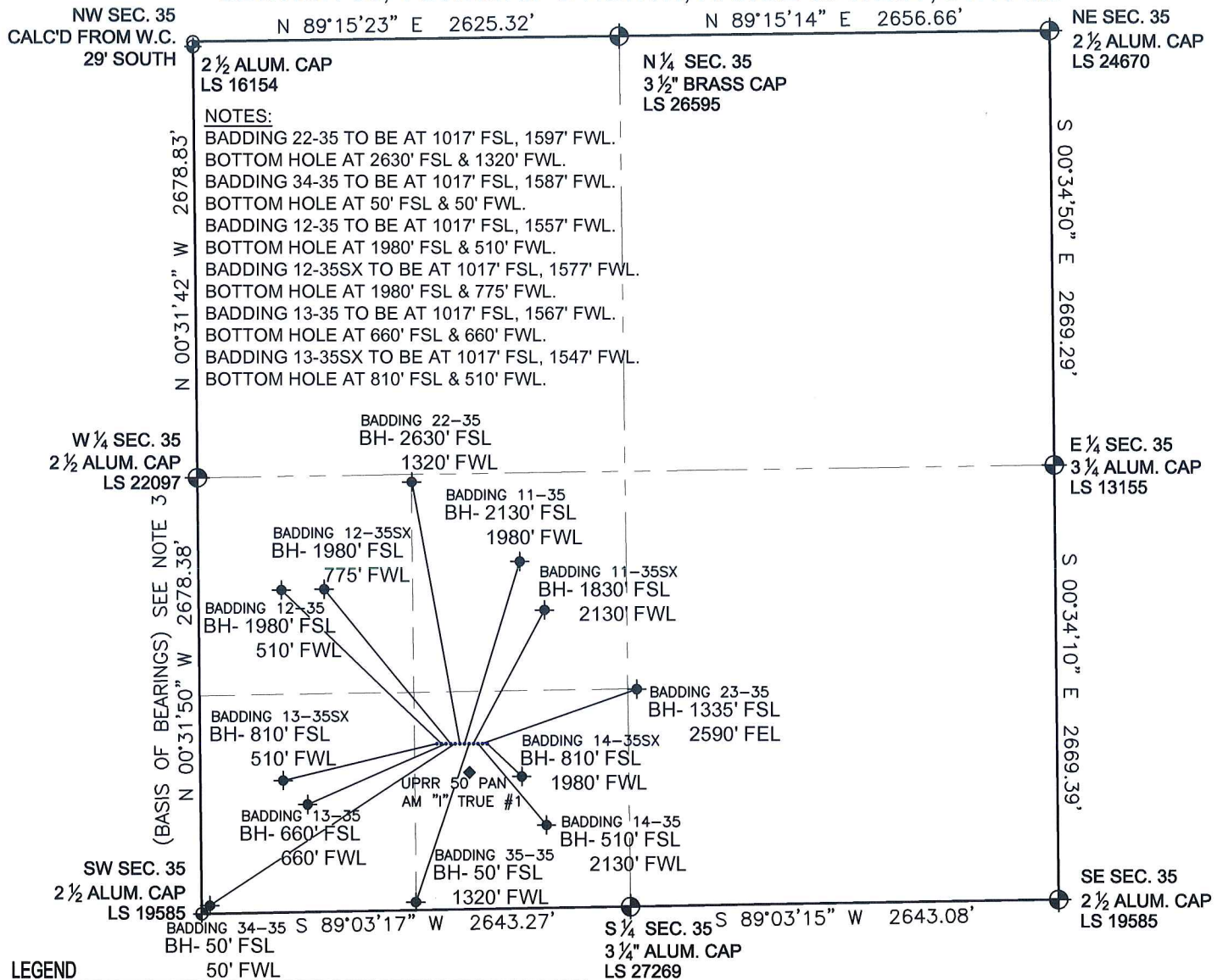


PAD DRAWING - BADDING 12 PAD

SECTION 35, TOWNSHIP 2 NORTH, RANGE 66 WEST, 6TH P.M.



LEGEND

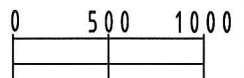
- = EXISTING MONUMENT
- ◆ = BOTTOM HOLE
- BH = BOTTOM HOLE
- = PROPOSED WELL
- ◆ = EXISTING WELL

NOTES:

- THIS SURVEY WAS DONE BY GPS METHODS AND CONFORMS TO THE MINIMUM STANDARDS SET BY THE C.O.G.C.C., RULE NO. 215
- ELEVATIONS SHOWN AT THE WELL HEAD, AS WELL AS HORIZONTAL CONTROL, ARE BASED ON GPS-RTK VALUES DERIVED FROM DOING 2-HOUR STATIC GPS SESSIONS AND REDUCTIONS USING O.P.U.S. SOLUTIONS.
VERTICAL = NAVD88; HORIZONTAL = NAD83/92
- THE BEARINGS SHOWN HEREON ARE BASED ON GPS OBSERVATIONS BETWEEN THE MONUMENTS SHOWN HEREON AS FOUND ON THE FIELD DATE BELOW.
- DISTANCES SHOWN ARE AT GROUND LEVEL, AS MEASURED IN THE FIELD, WITH TIES TO WELLS MEASURED AT A PERPENDICULAR TO SECTION LINES.

NOTES:

- UPRR 50 PAN AM "1" TRUE #1 IS 968' FSL, 1657' FWL.
- BADDING 14-35SX TO BE AT 1017' FSL, 1657' FWL.
- BOTTOM HOLE AT 810' FSL & 1980' FWL.
- BADDING 14-35 TO BE AT 1017' FSL, 1637' FWL.
- BOTTOM HOLE AT 510' FSL & 2130' FWL.
- BADDING 23-35 TO BE AT 1017' FSL, 1647' FWL.
- BOTTOM HOLE AT 1335' FSL & 2590' FEL.
- BADDING 11-35SX TO BE AT 1017' FSL, 1627' FWL.
- BOTTOM HOLE AT 1830' FSL & 2130' FWL.
- BADDING 11-35 TO BE AT 1017' FSL, 1607' FWL.
- BOTTOM HOLE AT 2130' FSL & 1980' FWL.
- BADDING 35-35 TO BE AT 1017' FSL, 1617' FWL.
- BOTTOM HOLE AT 50' FSL & 1320' FWL.



SCALE: 1"=1000'

REVISIONS

INITIAL	DATE
SMF	05-25-10
SMF	06-11-10

PREPARED BY:

PFS

Petroleum Field Services, LLC
1801 W. 13th Ave.
Denver, CO 80204



KERR-MCGEE OIL & GAS ONSHORE LP

FIELD DATE:
04-27-10

DRAWING DATE:
05-06-10

BY:
SMF

PAD NAME:

BADDING 12 PAD

SURFACE LOCATION:

WELD COUNTY, COLORADO
SE 1/4 SW 1/4, SEC. 35, T2N, R66W