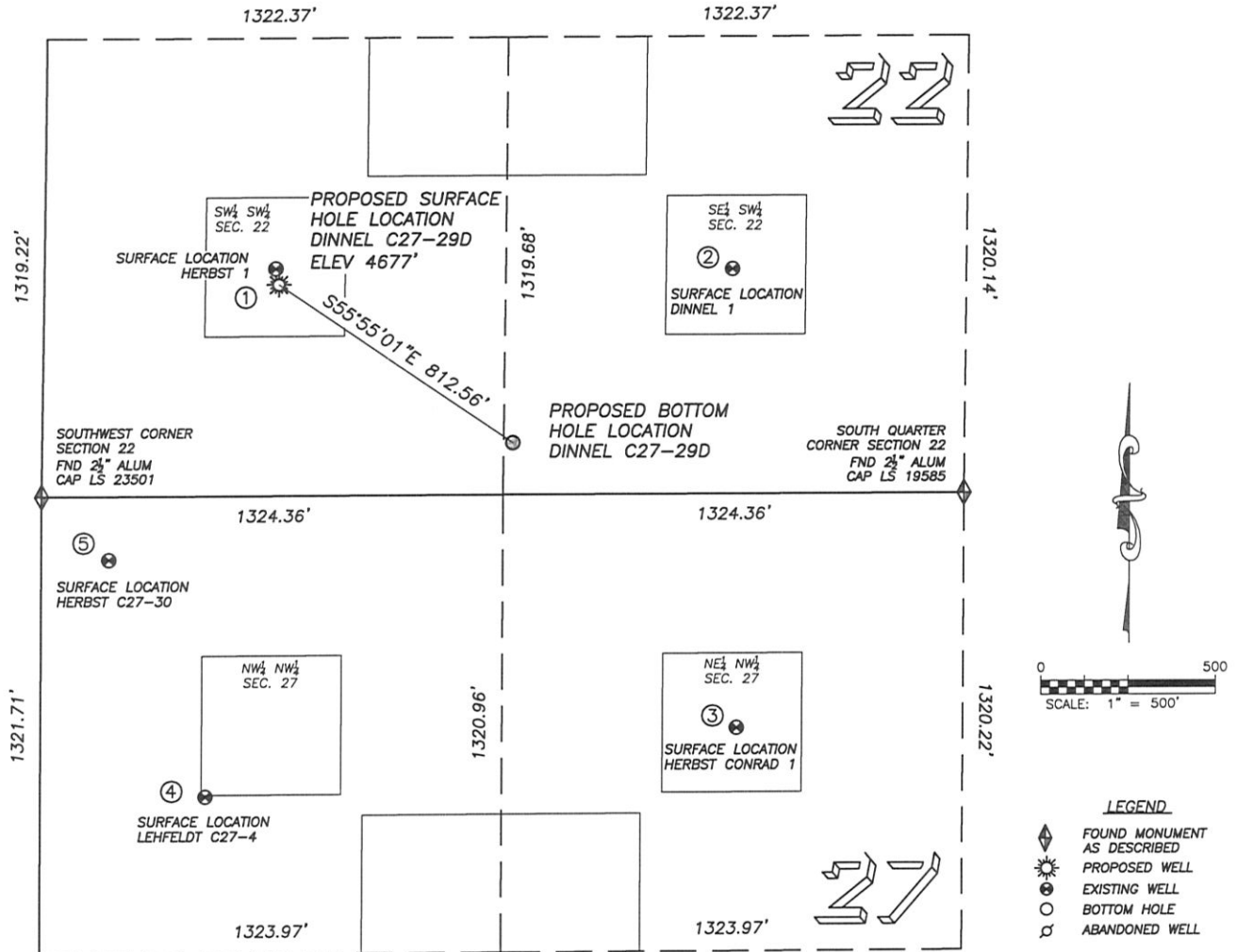


MULTI-WELL PLAN - NOBLE ENERGY

SECTION 22, TOWNSHIP 4 NORTH, RANGE 64 WEST OF THE 6TH PRINCIPAL MERIDIAN



①

HERBST 1
SW/SW SEC. 22
654' FSL, 663' FWL
846' NW OF PROPOSED
BOTTOM HOLE LOCATION
LAT. N40.29247°
LONG. W104.54404°
EL: 4678'
PDOP 2.4

②

DARLENE DINNEL 1
SE/SW SEC. 22
648' FSL, 1975' FWL
805' NE OF PROPOSED
BOTTOM HOLE LOCATION
LAT. N40.29247°
LONG. W104.53934°
EL: 4671'
PDOP 1.3

③

HERBST CONRAD 1
NE/NW SEC. 27
675' FNL, 1999' FWL
1046' SE OF PROPOSED
BOTTOM HOLE LOCATION
LAT. N40.28884°
LONG. W104.53928°
EL: 4673'
PDOP 2.4

④

LEHFELDT C27-4
NW/NW SEC. 27
866' FNL, 474' FWL
1347' SW OF PROPOSED
BOTTOM HOLE LOCATION
LAT. N40.28830°
LONG. W104.54475°
EL: 4683'
PDOP 2.5

⑤

HERBST C27-30
NW/NW SEC. 27
183' FNL, 194' FWL
1207' SW OF PROPOSED
BOTTOM HOLE LOCATION
LAT. N40.29017°
LONG. W104.54575°
EL: 4687'
PDOP 1.8

NOTES:

- 1) THIS DOES NOT REPRESENT A BOUNDARY SURVEY
- 2) THE LATITUDES AND LONGITUDES SHOWN ARE REFERENCED TO NAD83
- 3) DATUM FOR ELEVATION IS NAVD88. ELEVATIONS ARE DERIVED FROM GPS-RTK OBSERVATIONS PROCESSED THROUGH OPUS, UTILIZING THE GEOID03 MODEL.