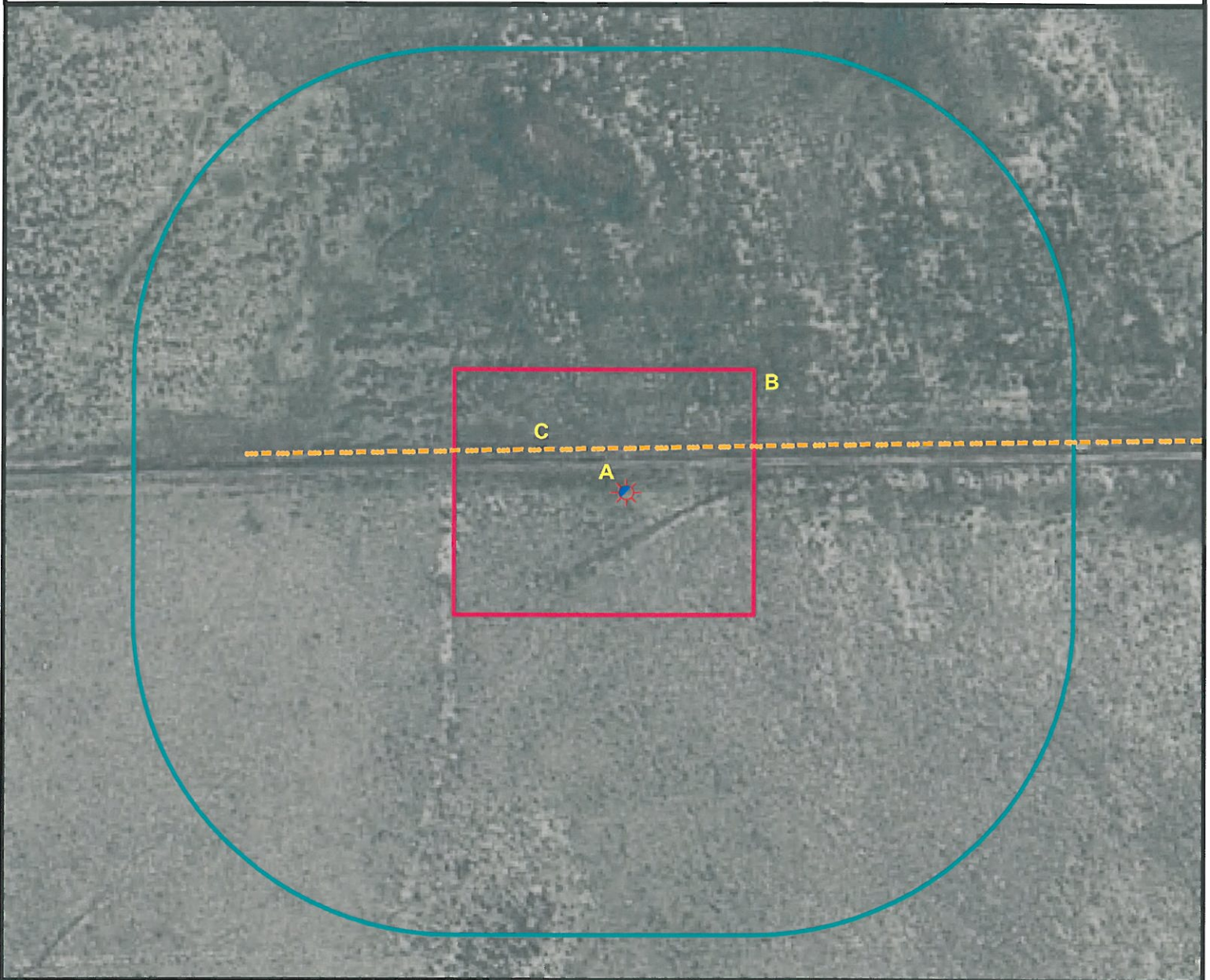


Location Drawing



A. Proposed Well RICKARDS 41-10H.

B. Operational Disturbance Area.

C. The Fence is 60' N.



Legend

- | | |
|----------------------|----------------------|
| Proposed Well | Building/Residence |
| Existing Well | Oil & Gas Equipment |
| Plugged Well | Water Body |
| Water Well | Utility Box |
| CattleGuard/Gate | Railroad |
| Bridge | Fence |
| Disturbance Area | Overhead Power Line |
| 400' Radius | Underground Pipeline |
| Facilities Enclosure | County Road |
| | Access Road |
| | Ditch/Canal |
| | Concrete Ditch |

400ft Radius Map

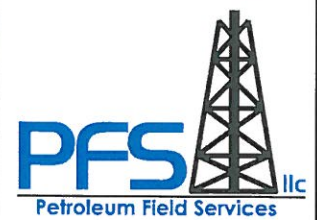
RICKARDS 41-10H

Surface Location: T6N R61W S10
Description of surface uses: Dryland Crop

Field Date: 06/17/2010
Drawing Date: 06/23/2010
Drafter: KLM
Checked By: KLM

Aerial Photo supplied by NAIP (2009)

Prepared for:
**PETROLEUM
DEVELOPMENT
CORPORATION**



Use our resources to find yours!
www.petro-fs.com

1801 W. 13th Ave Suite 207
Denver, CO 80204
(303) 928-7128
111 E. Third Street
Rifle, CO 81650
(970) 625-4740