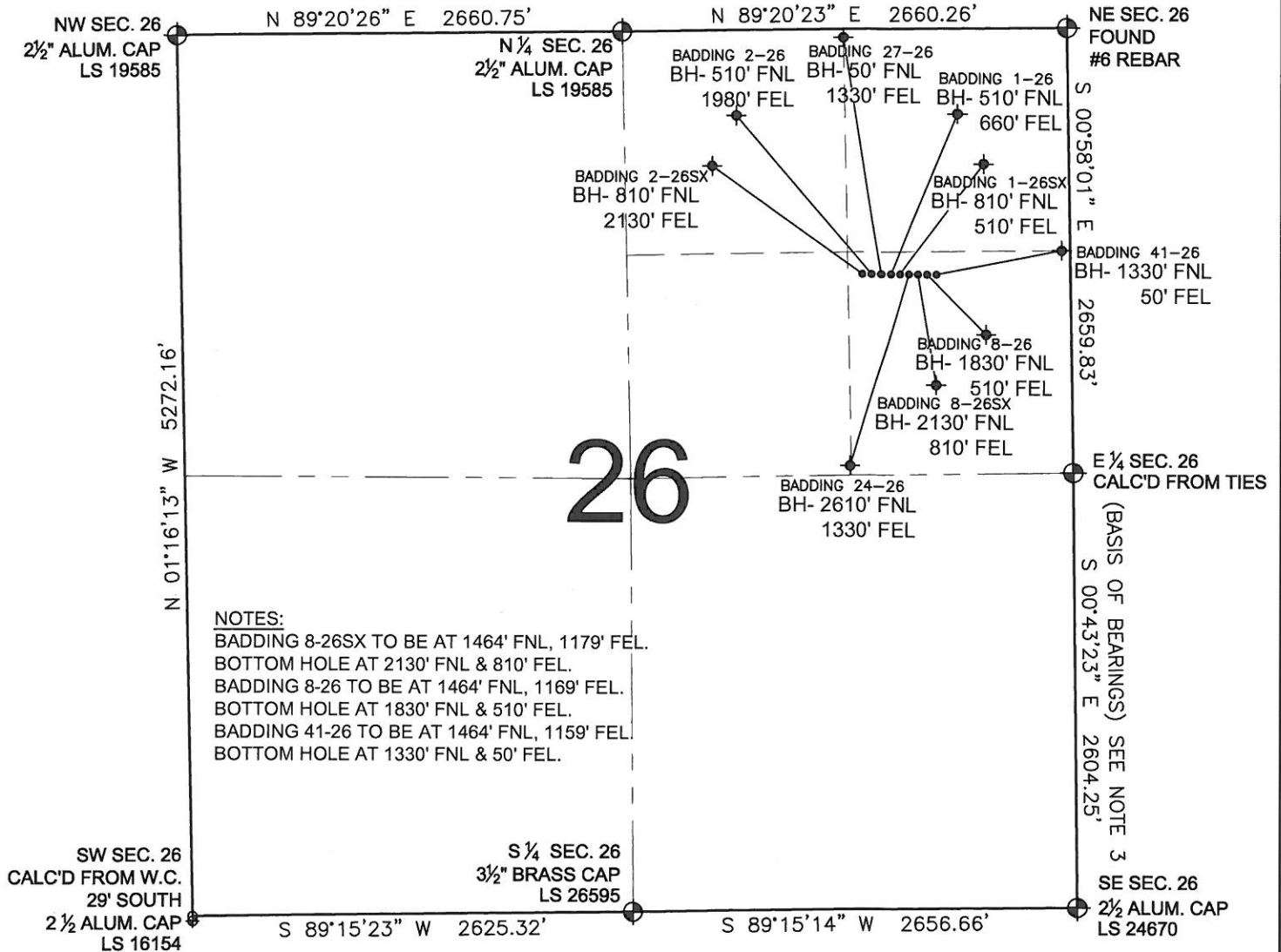


PAD DRAWING - BADDING 9 PAD

SECTION 26, TOWNSHIP 2 NORTH, RANGE 66 WEST, 6TH P.M.



NOTES:
 BADDING 8-26SX TO BE AT 1464' FNL, 1179' FEL.
 BOTTOM HOLE AT 2130' FNL & 810' FEL.
 BADDING 8-26 TO BE AT 1464' FNL, 1169' FEL.
 BOTTOM HOLE AT 1830' FNL & 510' FEL.
 BADDING 41-26 TO BE AT 1464' FNL, 1159' FEL.
 BOTTOM HOLE AT 1330' FNL & 50' FEL.

26

LEGEND

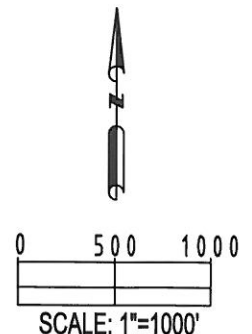
- ⊕ = EXISTING MONUMENT
- ⬮ = BOTTOM HOLE
- BH= BOTTOM HOLE
- = PROPOSED WELL
- ◆ = EXISTING WELL


NOTES:

- THIS SURVEY WAS DONE BY GPS METHODS AND CONFORMS TO THE MINIMUM STANDARDS SET BY THE C.O.G.C., RULE NO. 215
- ELEVATIONS SHOWN AT THE WELL HEAD, AS WELL AS HORIZONTAL CONTROL, ARE BASED ON GPS-RTK VALUES DERIVED FROM DOING 2-HOUR STATIC GPS SESSIONS AND REDUCTIONS USING O.P.U.S. SOLUTIONS.
 VERTICAL = NAVD88; HORIZONTAL = NAD83/92
- THE BEARINGS SHOWN HEREON ARE BASED ON GPS OBSERVATIONS BETWEEN THE MONUMENTS SHOWN HEREON AS FOUND ON THE FIELD DATE BELOW.
- DISTANCES SHOWN ARE AT GROUND LEVEL, AS MEASURED IN THE FIELD, WITH TIES TO WELLS MEASURED AT A PERPENDICULAR TO SECTION LINES.

NOTES:

- BADDING 2-26SX TO BE AT 1464' FNL, 1239' FEL.
 BOTTOM HOLE AT 810' FNL & 2130' FEL.
- BADDING 2-26 TO BE AT 1464' FNL, 1229' FEL.
 BOTTOM HOLE AT 510' FNL & 1980' FEL.
- BADDING 27-26 TO BE AT 1464' FNL, 1219' FEL.
 BOTTOM HOLE AT 50' FNL & 1330' FEL.
- BADDING 1-26 TO BE AT 1464' FNL, 1209' FEL.
 BOTTOM HOLE AT 510' FNL & 660' FEL.
- BADDING 1-26SX TO BE AT 1464' FNL, 1199' FEL.
 BOTTOM HOLE AT 810' FNL & 510' FEL.
- BADDING 24-26 TO BE AT 1464' FNL, 1189' FEL.
 BOTTOM HOLE AT 2610' FNL & 1330' FEL.



REVISIONS		PREPARED BY:	 Petroleum Field Services, LLC 1801 W. 13th Ave. Denver, CO 80204
INITIAL	DATE		

KERR-MCGEE OIL & GAS ONSHORE LP

FIELD DATE: 04-27-10	PAD NAME: BADDING 9 PAD
DRAWING DATE: 05-12-10	SURFACE LOCATION:
BY: SMF	WELD COUNTY, COLORADO SE 1/4 NE 1/4, SEC. 26, T2N, R66W