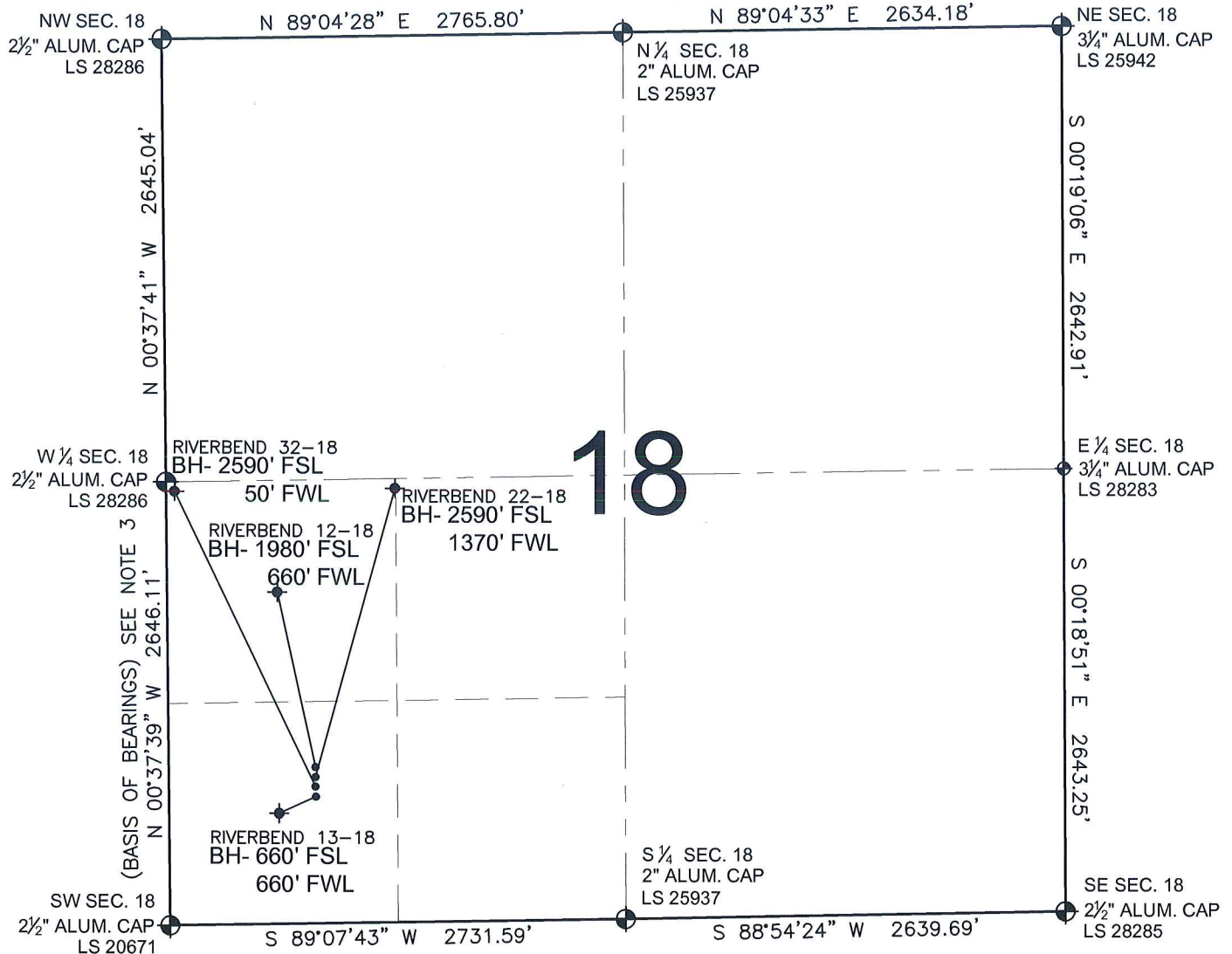


PAD DRAWING - RIVERBEND 4 PAD

SECTION 18, TOWNSHIP 1 NORTH, RANGE 66 WEST, 6TH P.M.



LEGEND

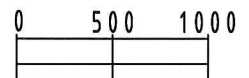
- = EXISTING MONUMENT
 = BOTTOM HOLE
 BH= BOTTOM HOLE
 = PROPOSED WELL
 = EXISTING WELL

NOTES:

- THIS SURVEY WAS DONE BY GPS METHODS AND CONFORMS TO THE MINIMUM STANDARDS SET BY THE C.O.G.C.C., RULE NO. 215
- ELEVATIONS SHOWN AT THE WELL HEAD, AS WELL AS HORIZONTAL CONTROL, ARE BASED ON GPS-RTK VALUES DERIVED FROM DOING 2-HOUR STATIC GPS SESSIONS AND REDUCTIONS USING O.P.U.S. SOLUTIONS.
VERTICAL = NAVD88; HORIZONTAL = NAD83/92
- THE BEARINGS SHOWN HEREON ARE BASED ON GPS OBSERVATIONS BETWEEN THE MONUMENTS SHOWN HEREON AS FOUND ON THE FIELD DATE BELOW.
- DISTANCES SHOWN ARE AT GROUND LEVEL, AS MEASURED IN THE FIELD, WITH TIES TO WELLS MEASURED AT A PERPENDICULAR TO SECTION LINES.

NOTES:

- RIVERBEND 12-18 TO BE AT 846' FSL, 880' FWL.
 BOTTOM HOLE AT 1980' FSL & 660' FWL.
 RIVERBEND 22-18 TO BE AT 816' FSL, 880' FWL.
 BOTTOM HOLE AT 2590' FSL & 1370' FWL.
 RIVERBEND 32-18 TO BE AT 786' FSL, 880' FWL.
 BOTTOM HOLE AT 2590' FSL & 50' FWL.
 RIVERBEND 13-18 TO BE AT 756' FSL, 880' FWL.
 BOTTOM HOLE AT 660' FSL & 660' FWL.



SCALE: 1"=1000'

REVISIONS

INITIAL	DATE

PREPARED BY:

PFS

Petroleum Field Services, LLC
1801 W. 13th Ave.
Denver, CO 80204



KERR-MCGEE OIL & GAS ONSHORE LP

FIELD DATE:
04-27-10

DRAWING DATE:
05-04-10

BY:
SMF

PAD NAME:
RIVERBEND 4 PAD

SURFACE LOCATION:

WELD COUNTY, COLORADO
SW 1/4 SW 1/4, SEC. 18, T1N, R66W