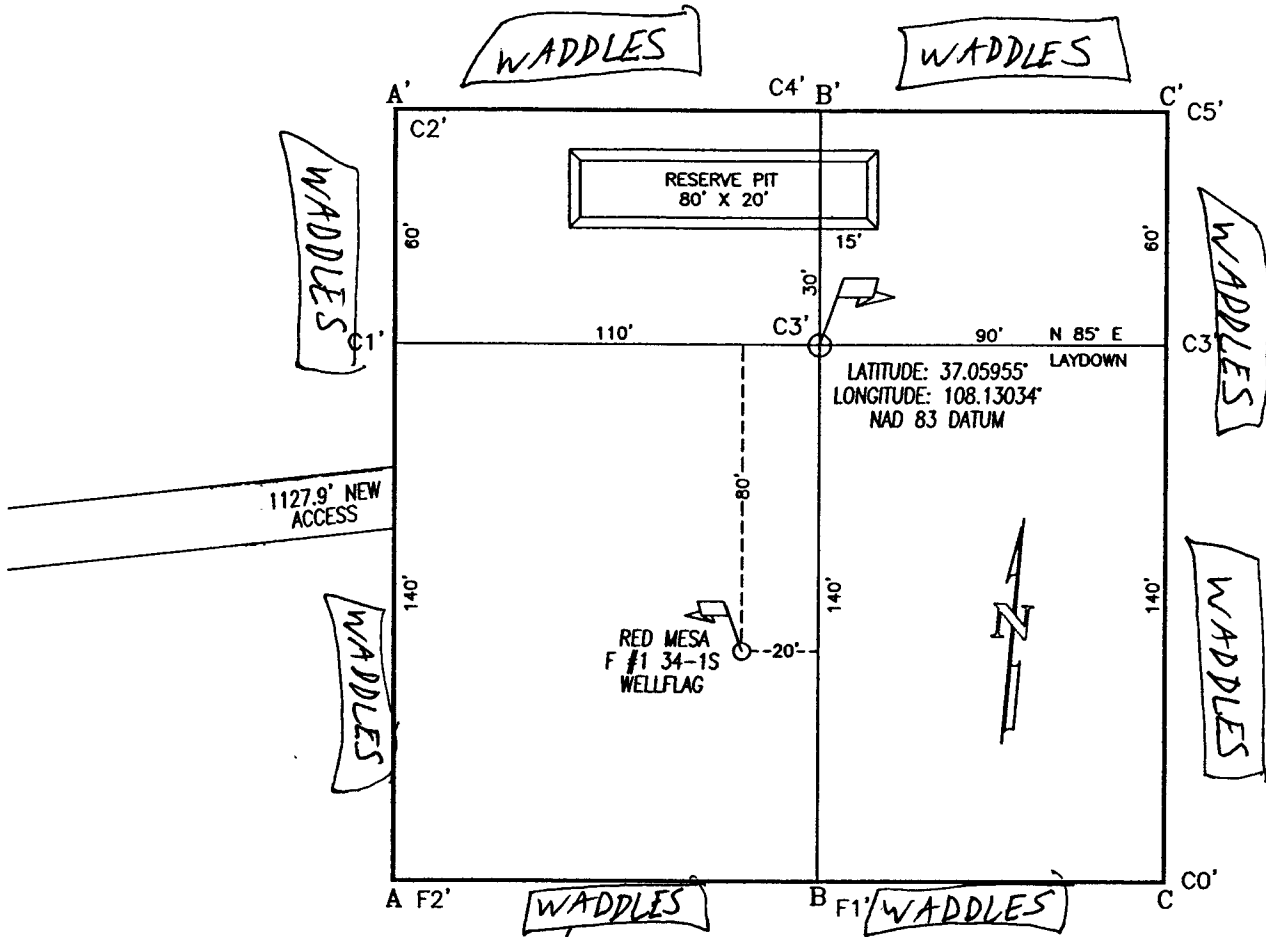


Red Mesa Holdings O&G LLC, F #1 34-1 Well, Proposed BMPs

1. A Master Stormwater Management Plan for the Red Mesa field dated 3/09 has been electronically submitted to the COGCC.
2. A Spill Prevention, Control and Countermeasure Plan, Red Mesa Gas Field Production Facility, dated 12/08, has been electronically submitted to the COGCC.
3. Per COGCC Rule 1002.f.(2)A “covering materials and activities and stormwater diversion”, Red Mesa has devised Waste Management and Materials Pollution Control measures (see pages 85-90 of Appendix P of Volume II of Master Stormwater Management Plan for the Red Mesa Field dated 3/09). Key points of the plan include storage areas, hazardous materials, MSDS, liquid materials and petroleum products, soil stockpiles, and spill cleanup.
4. Per COGCC Rule 1002.f.(2)B “materials handling and spill prevention procedures and practices”, Red Mesa devised Waste Management and Materials Pollution Control measures (see pages 90-104 of Appendix P of Volume II, Master Stormwater Management Plan for the Red Mesa Field and Sections D “Tank Truck Loading”, G “Discharge Notification Procedures”, H “Equipment Shut-off Procedures”, J “Oil Spill Contingency Plan”, and K “Facility Maps and Equipment Diagrams” of the Spill Prevention, Control, and Countermeasure Plan, Red Mesa Gas Field Production Facility). Per these above listed sections of the plans, Red Mesa has addressed how it will handle materials, prevent spills, and respond to incidents. Field personnel have been trained pursuant to the plans.
5. Per COGCC Rule 1002.f.(2)D “self-inspection, maintenance, and good housekeeping procedures and schedules”, Red Mesa devised “Good Housekeeping BMPs” in Section 3, “Good Housekeeping BMPs”, and Section 5, “Inspections” of Volume I of the Master Stormwater Management Plan.
6. Per COGCC Rule 1002.f.(2)E “spill response procedures”, Red Mesa electronically submitted a Spill Prevention, Control and Countermeasure Plan, Red Mesa Gas Field, dated 12/08, to the COGCC. This plan provides specifics on facility information, spill response and reporting, and spill prevention, control, and countermeasures.
7. Per COGCC Rule 1002.f.(3), Red Mesa devised “Selecting Post-Construction BMPs in Section 4 of Volume I of the Master Stormwater Management Plan. In addition, Red Mesa abides by the stormwater regulations of the CDPHE/CWQCD. This includes post-construction BMPs, stabilization thresholds, and required inspection times. A copy of the CDPHE/CWQCD standards is included in Volume II of Red Mesa’s Master Stormwater Management Plan as Appendix “O”.
8. The wellpad is located on rather flat lands with a slope of less than 10%. Stormwater will be routed around the pad using a combination of BMPs (berms, ditches, waddles, silt fences, etc).
9. BMPs for pad construction will be installed in appropriate intervals of distance (approx. every 5- 10’) to ensure that stormwater is intercepted before it gets to the well pad. Sediment control BMPs will be installed where stormwater discharge

- occurs via a series of waddles or checkdams approximately every 5' (see Section 2.2 of Volume I of Master Stormwater Plan).
10. Inspections will be conducted weekly and after/during any rain or runoff event (see Section 2.3 of Volume I of Master Stormwater Plan).
 11. Materials handling will be per Sections D "Tank Truck Loading", G "Discharge Notification Procedures", H "Equipment Shut-off Procedures", J "Oil Spill Contingency Plan", and K "Facility Maps and Equipment Diagrams" of Red Mesa's Spill Prevention, Control and Countermeasure Plan, Red Mesa Gas Field Production Facility, dated 12/08.
 12. Spill Control and reporting will be pursuant to Section 2.0 "Spill Response and Reporting" of Red Mesa's Spill Prevention, Control and Countermeasure Plan, Red Mesa Gas Field Production Facility, dated 12/08.
 13. See attached "General Site Layout" showing approximate location of BMPs during construction for the proposed well. Please note that this map is subject to change upon commencement of construction.

RED MESA HOLDINGS O&G LLC: F#1 34-1
 2035' FSL, 604' FEL, SEC. 34, T-33-N, R-12-W, N.M.P.M.,
 LA PLATA COUNTY, CO. GROUND LEVEL ELEVATION: 6543'
 "PROPOSED BMPs"



*NOTE: BMPs subject to change
 upon construction of well pad.

TOTAL PAD SIZE
 0.92 ACRES

NOTE:
 BEFORE ANY CONSTRUCTION BEGINS,
 CONTRACTOR IS ADVISED TO CALL
 ONE-CALL FOR LOCATION OF ANY
 MARKED OR UNMARKED PIPELINES OR
 CABLES IN THE AREA OF THIS PROJECT.

A-A' ELEV.

6553				
6543				
6533				

B-B'

6553				
6543				
6533				

C-C'

6553				
6543				
6533				

SCALE: 1" = 50'