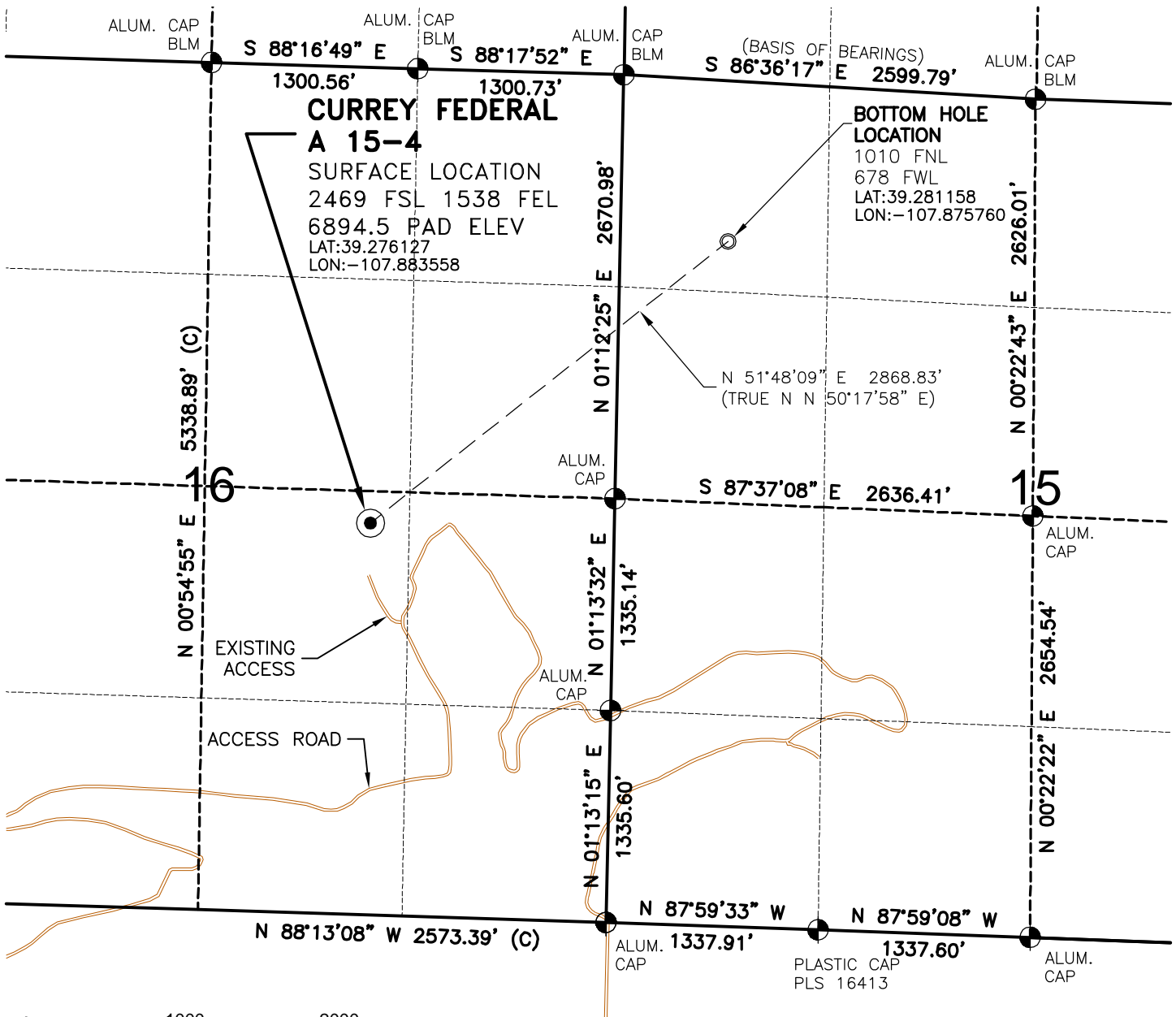


WELL LOCATION MAP

**CURREY
16-10 PAD**



NOTES

- 1.) Horizontal and vertical datum based on Mesa County control point "SN23" with an elevation of 8008.15. NAVD 1988.
- 2.) All directions, distances, and dimensions shown hereon are based on coordinates from the "Colorado coordinate system of 1983 central zone" (article 52 of title 38, C.R.S.).
- 3.) All section line dimensions shown hereon are based on field measurements of existing monuments and/or physical evidence found in the field unless otherwise indicated.
- 4.) Physical features shown hereon are for graphical representation only.
- 5.) See Form 2A for visible improvements within 400' of wellhead.
- 6.) Distances to nearest section lines are measured perpendicularly.
- 7.) This is not a land survey nor land survey plat.
- 8.) Date of Survey 6/20/07; Date of Drawing 7/2/10. REV2
PDOP Reading: 2.2 Instrument Operator: E.J.G.

SURVEYOR'S STATEMENT

The undersigned hereby states that the well location shown hereon was staked on the ground based on existing monumentation and/or physical evidence found in the field and is correct to the best of my knowledge, information and belief.



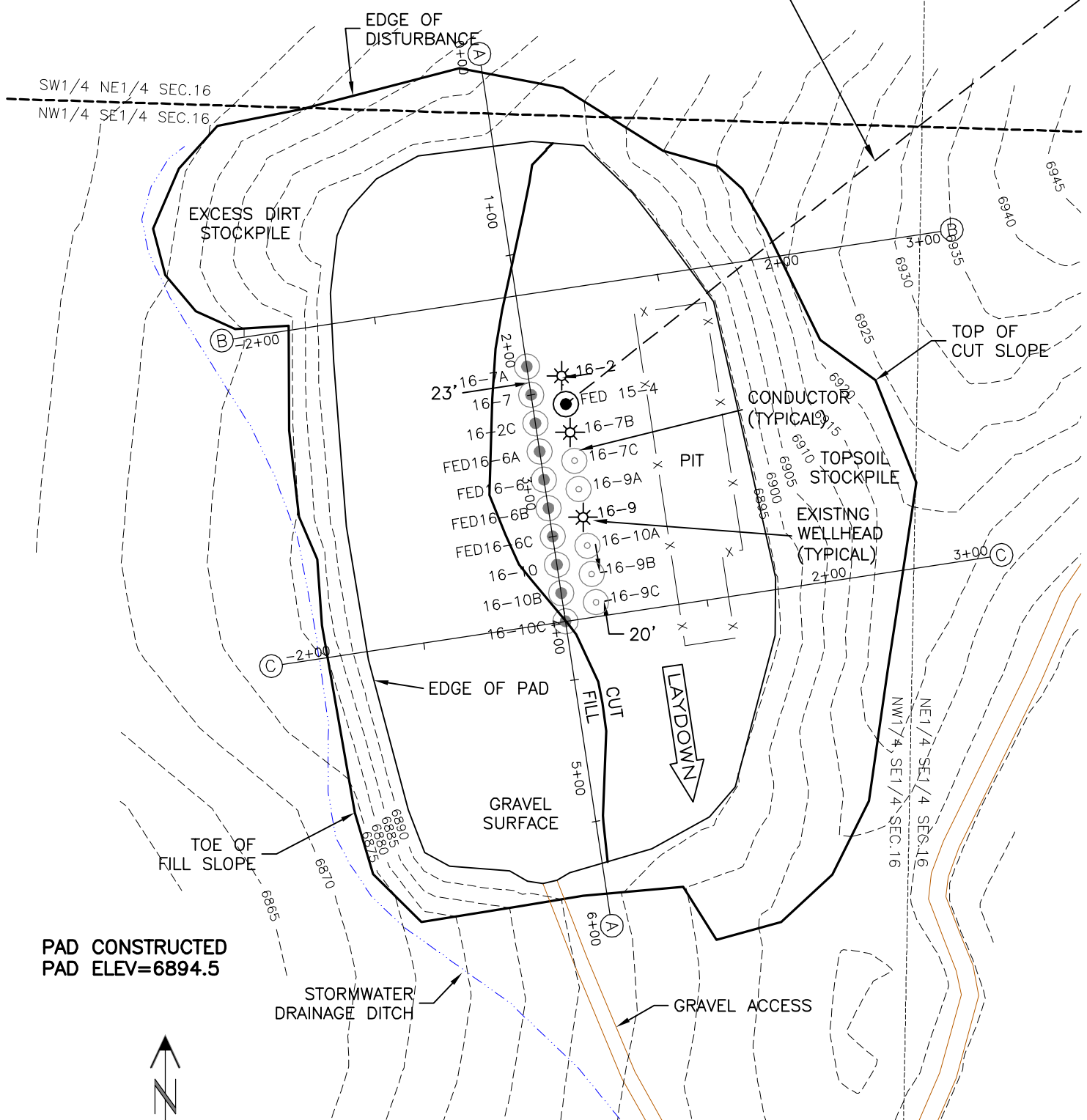
GEO SURV
LAND SURVEYING AND MAPPING
520 STACY COURT SUITE "B"
LAFAYETTE, CO. 80026
Ph 303 666 0379 Fx 303 665 6320

OXY USA, INC
CURREY FEDERAL A 15-4
SL NW1/4 SE1/4 SEC. 16 T9S R94W
BH NW1/4 NW1/4 SEC. 15 T9S R94W
6th PM MESA COUNTY COLORADO

PAD LAYOUT

CURREY
16-10 PAD

PROPOSED DIRECTIONAL ALIGNMENT
CURREY FEDERAL A 15-4
N 51°48'09" E 2868.83'



PAD CONSTRUCTED
PAD ELEV=6894.5

STORMWATER
DRAINAGE DITCH

GRAVEL ACCESS



Graphic Scale in Feet
1" = 100'



LAND SURVEYING AND MAPPING
520 STACY COURT SUITE "B"
LAFAYETTE, CO. 80026
Ph 303 666 0379 Fx 303 665 6320

OXY USA, INC
CURREY FEDERAL A 15-4

SL NW1/4 SE1/4 SEC. 16 T9S R94W
BH NW1/4 NW1/4 SEC. 15 T9S R94W
6th PM MESA COUNTY COLORADO