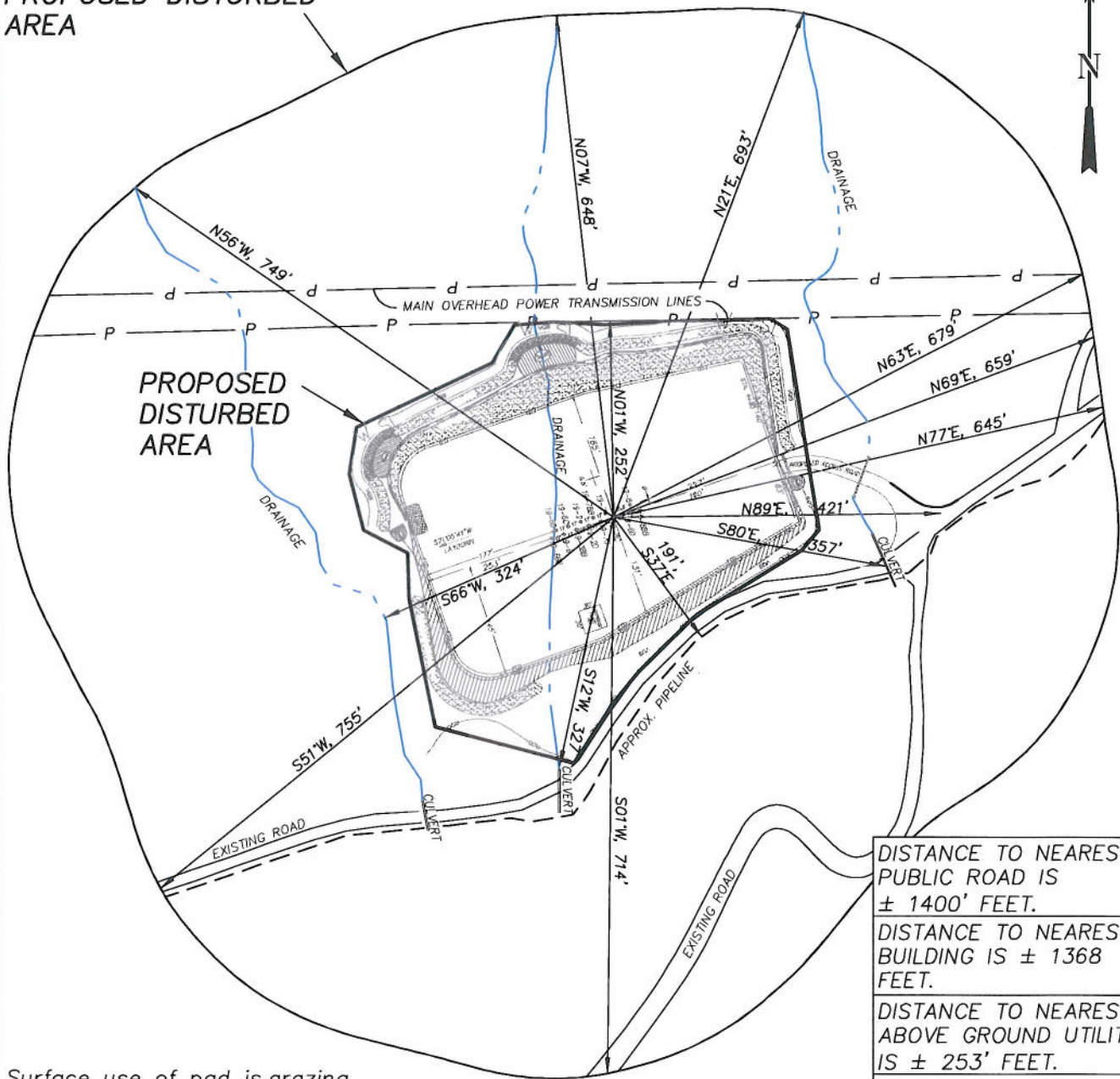


EnCana Oil & Gas (USA) Inc.
ADDENDUM TO LEGAL PLATS FOR
PJ-19 Well Pad

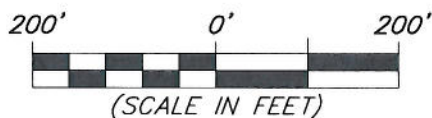
SECTION 19, T7S, R95W, 6th P.M.

400 FEET FROM
PROPOSED DISTURBED
AREA



Surface use of pad is grazing.
Vegetation consists mainly of
sage brush, oak brush and native
grasses.

DISTANCE TO NEAREST
PUBLIC ROAD IS
± 1400' FEET.
DISTANCE TO NEAREST
BUILDING IS ± 1368
FEET.
DISTANCE TO NEAREST
ABOVE GROUND UTILITY
IS ± 253' FEET.
DISTANCE TO NEAREST
RAILROAD IS ± 9300 FEET.



906 Main Street
Evanston, Wyoming 82930
Phone No. (307) 789-4545

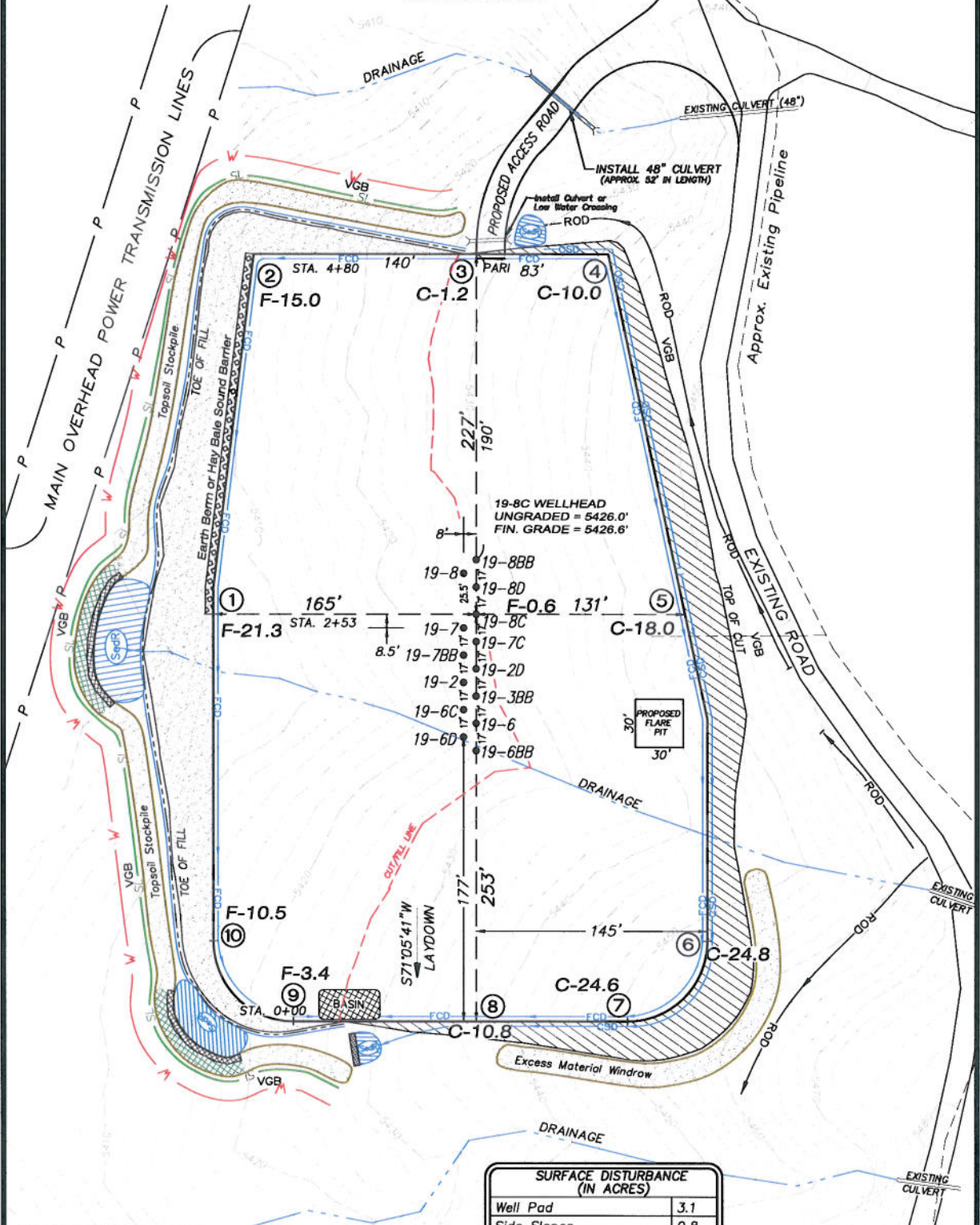
Survey Addendum		Scale: 1" = 200'	SHEET 10 OF 10
Project No.	10-04-04	Date Surveyed: 1/26/10	
Date Drawn:	2/25/10	Latest Revision Date: 6/08/10	

EnCana Oil & Gas (USA) Inc.

PJ-19 Well Pad

NW1/4 SE1/4, SECTION 19, T7S, R95W, 6th P.M.

WELL PAD LAYOUT

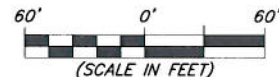


Total Surface Disturbance = 5.36 Acres
(See Sheet 4 for Details)

- NOTES:
- (1) Slope Track and/or Terrace all Slopes and Piles
 - (2) Erosion Control & Seed Topsoil
 - (3) Erosion Control & Seed Outside
 - (4) Slope away from Substructure Areas 1% to 3% to Flow Control

- LEGEND:
- S- = SLASH
 - ST = SEDIMENT TRAP
 - Seal = SEDIMENT RESERVOIR
 - R.O.D. = RUN-ON DIVERSION
 - - - = PERIMETER CONTROL (WATTLES)
 - CSD = CUT SLOPE DIVERSION (BERM TOE OF CUT SLOPE)
 - D = FILL DIVERSION TO SEDIMENT TRAP
 - VGB = VEGETATION BUFFER (UNDISTURBED LAND INSIDE PC)
 - FCO = FLOW CONTROL DITCH
 - PAR = PAD/ACCESS ROAD INTERFACE
 - LEVEL SPREADER
 - TOE BERM (PLACED AT TOE OF ALL FILL SLOPES/STOCKPILES)
 - TOPSOIL BERM
 - SEED, EOB & FLEX
 - SEED

SURFACE DISTURBANCE (IN ACRES)	
Well Pad	3.1
Side Slopes	0.8
Topsoil & Waste Material	1.46
TOTAL	5.36



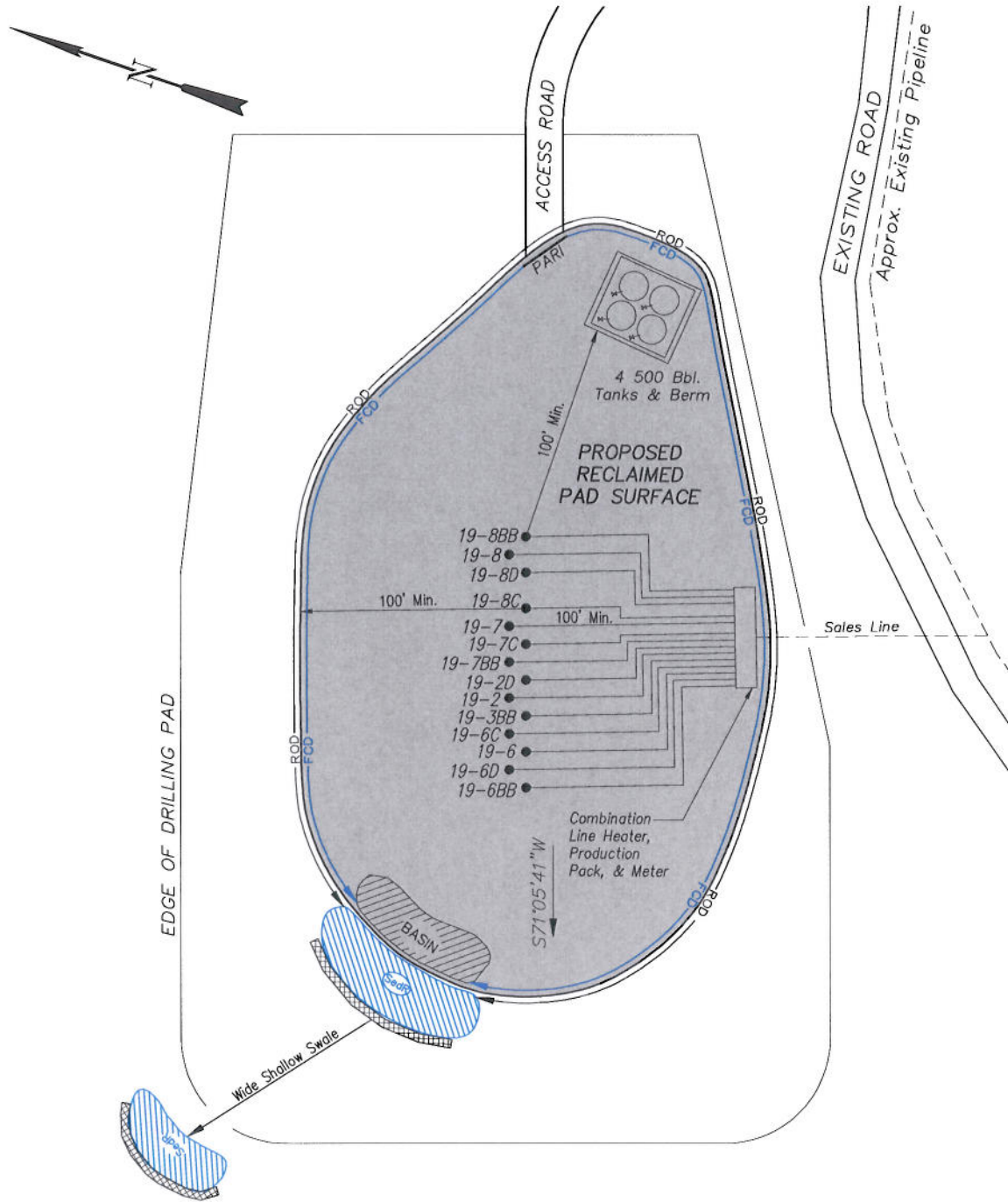
906 Main Street
Evanston, Wyoming 82930
Phone No. (307) 789-4545

Well Pad Layout		Scale: 1" = 60'	SHEET
Project No.	10-04-04	Date Surveyed:	1/26/10
Date	2/25/10	Latest Revision	6/08/10
Drawn:		Date:	
			3 OF 10

EnCana Oil & Gas (USA) Inc.

PJ-19 Well Pad

PRODUCTION SCHEMATIC



NOTES:

1. Set Tanks High so pad Entrance & Tank Area Can Drain to Pad Basin
2. Gravel Pad 75' from Wells & Around Tanks and Separators
3. Pad Drains to Pad Basin at a 3% to 5% slope
4. BMP Selection and Position may change Depending on Actual Conditions Encountered During the Construction Process

NOTE:

Actual Equipment Layout and Reclaimed Pad Surface Area May Change due to Production Requirements or Site Conditions.

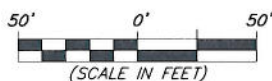
ESTIMATED AREAS
 RECLAIMED AREA: 3.86 ACRES
 UNRECLAIMED AREA: 1.5 ACRES

LEGEND

- SLASH
- ST = SEDIMENT TRAP
- SedR = SEDIMENT RESERVOIR
- R.O.D. = RUN-ON DIVERSION
- PERMETER CONTROL (WATTLES)
- CSD = CUT SLOPE DIVERSION (BERM TOE OF CUT SLOPE)
- D = FILL DIVERSION TO SEDIMENT TRAP
- VEGETATION BUFFER (UNDISTURBED LAND INSIDE PC)
- FCD = FLOW CONTROL DITCH
- PARI = PAD/ACCESS ROAD INTERFACE
- LEVEL SPREADER
- TOE BERM (PLACED AT TOE OF ALL FILL SLOPES/STOCKPILES)
- TOPSOIL BERM
- SEED, ECB & FLEX
- SEED

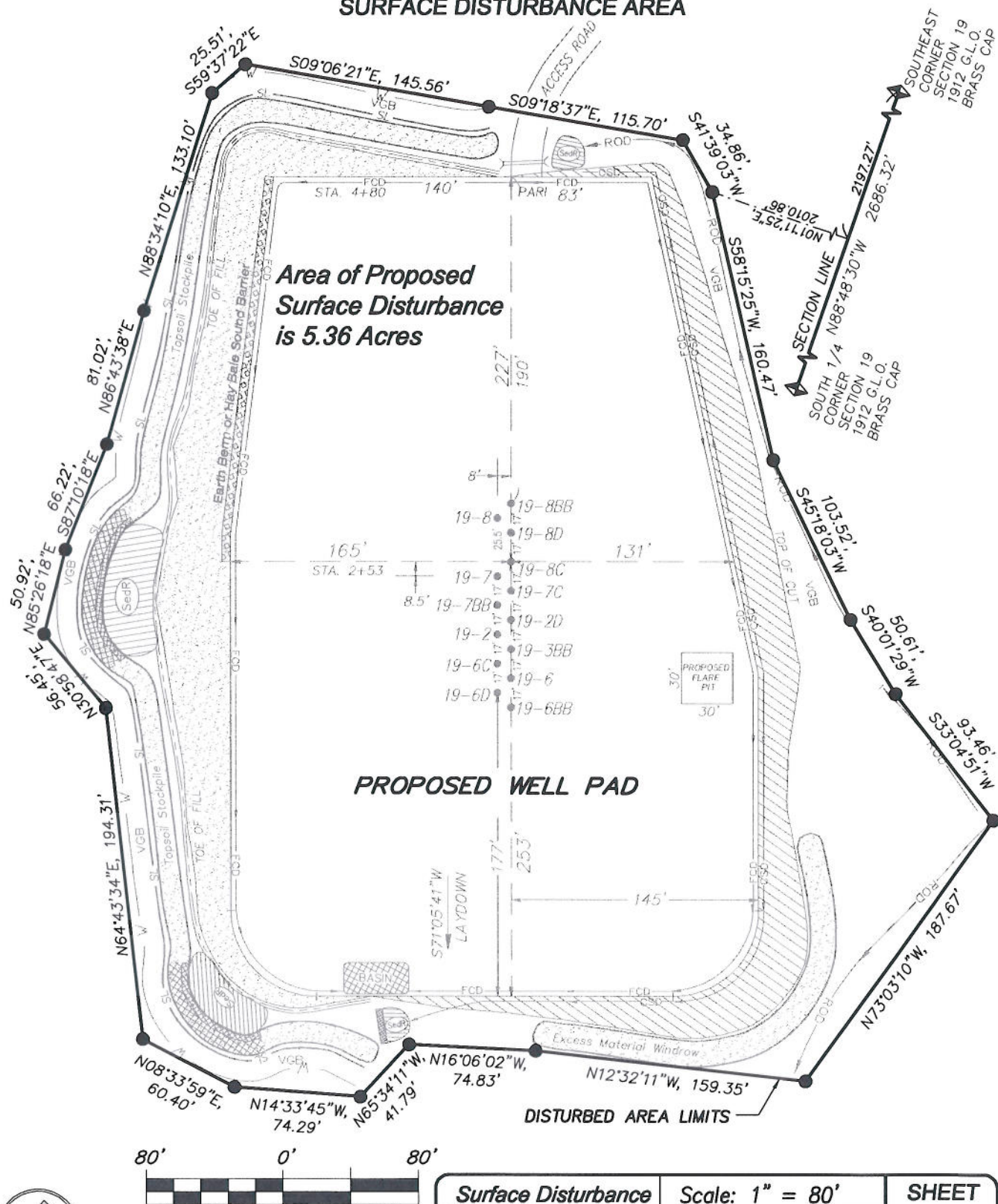


906 Main Street
 Evanston, Wyoming 82930
 Phone No. (307) 789-4545



Production Schematic		Scale: 1" = 50'	SHEET
Project No.	10-04-04	Date Surveyed: 1/26/10	6
Date Drawn: 2/25/10	Latest Revision Date: 6/08/10		
			OF 10

SURFACE DISTURBANCE AREA



(SCALE IN FEET)
906 Main Street
Evanston, Wyoming 82930
Phone No. (307) 789-4545

Surface Disturbance		Scale: 1" = 80'	SHEET 7 OF 10	
Project No.	10-04-04	Date Surveyed:		1/26/10
Date Drawn:	2/25/10	Latest Revision Date:		6/08/10