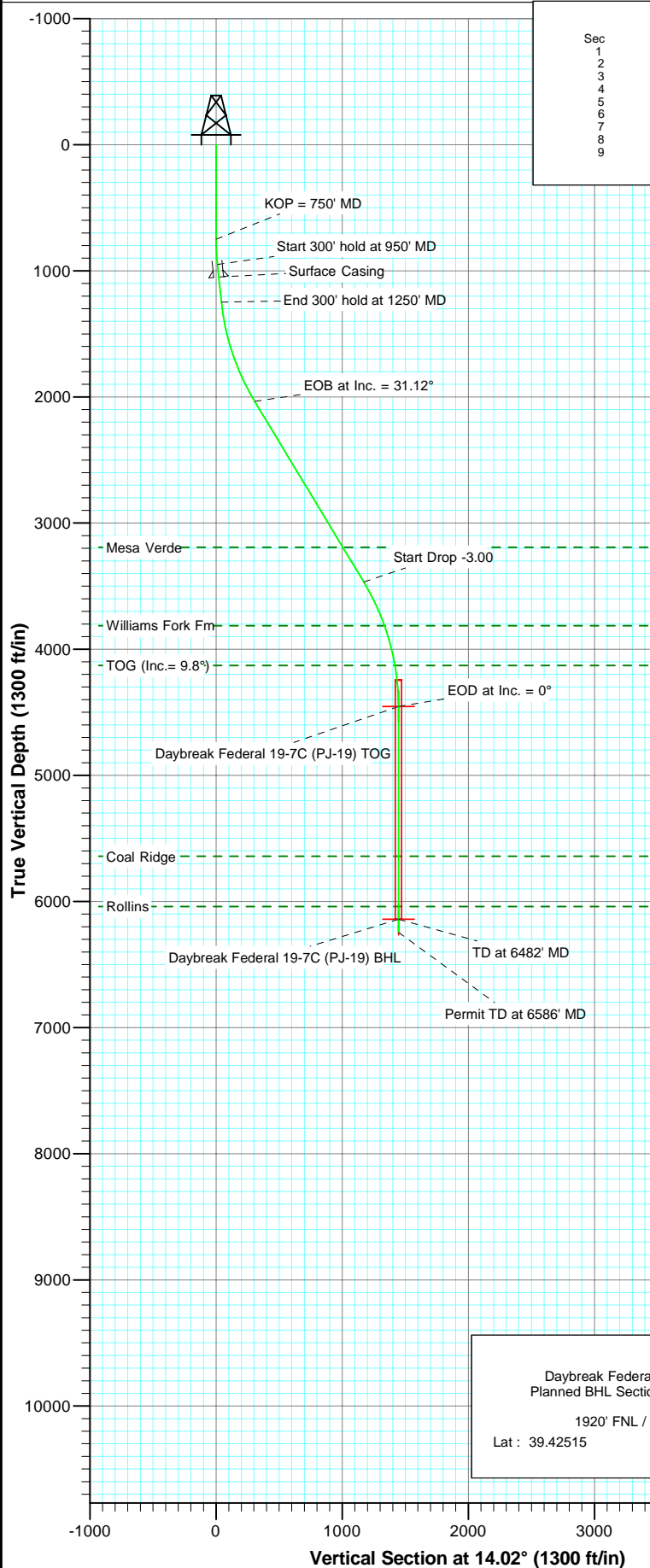
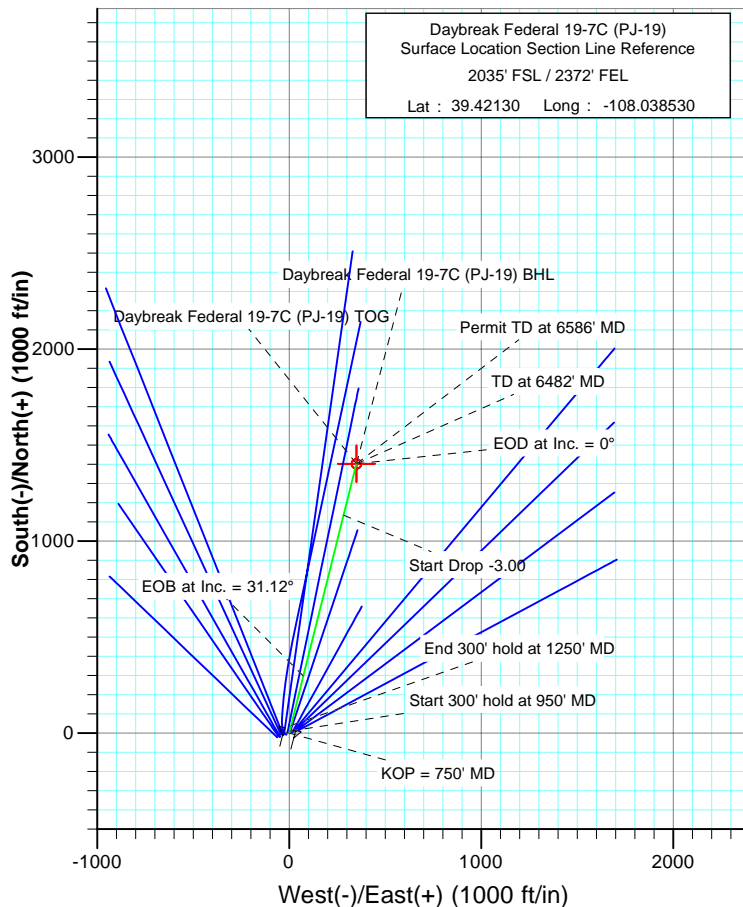




Project: S. Piceance  
Site: NWSE S19-T7S-R95W (PJ-19 Pad)  
Well: Daybreak Federal 19-7C (PJ-19)  
Wellbore: DD  
Plan: Plan #2



SECTION DETAILS										
Sec	MD	Inc	Azi	TVD	+N/-S	+E/-W	Dleg	TFace	V Sect	Target
1	0.0	0.00	0.00	0.0	0.0	0.0	0.00	0.00	0.0	
2	750.0	0.00	0.00	750.0	0.0	0.0	0.00	0.00	0.0	
3	950.0	6.01	14.02	949.6	10.2	2.5	3.00	14.02	10.5	
4	1250.0	6.01	14.02	1248.0	40.6	10.1	0.00	0.00	41.9	
5	2086.9	31.12	14.03	2035.0	297.1	74.2	3.00	0.01	306.2	
6	3759.6	31.12	14.03	3467.0	1135.7	283.7	0.00	0.00	1170.6	
7	4796.8	0.00	0.00	4454.0	1402.3	350.3	3.00	180.00	1445.4	Daybreak Federal 19-7C (PJ-19) TOG
8	6482.8	0.00	0.00	6140.0	1402.3	350.3	0.00	0.00	1445.4	Daybreak Federal 19-7C (PJ-19) BHL
9	6586.8	0.00	0.00	6244.0	1402.3	350.3	0.00	0.00	1445.4	



FORMATION TOP DETAILS		
TVDPath	MDPath	Formation
3192.0	3438.3	Mesa Verde
3813.0	4143.1	Williams Fork Fm
4129.0	4470.2	TOG (Inc. = 9.8°)
5641.0	5983.8	Coal Ridge
6040.0	6382.8	Rollins

Azimuths to True North	
Magnetic North: 10.52°	
Magnetic Field	
Strength: 52335.3snT	
Dip Angle: 65.70°	
Date: 3/12/2010	
Model: IGRF2010	

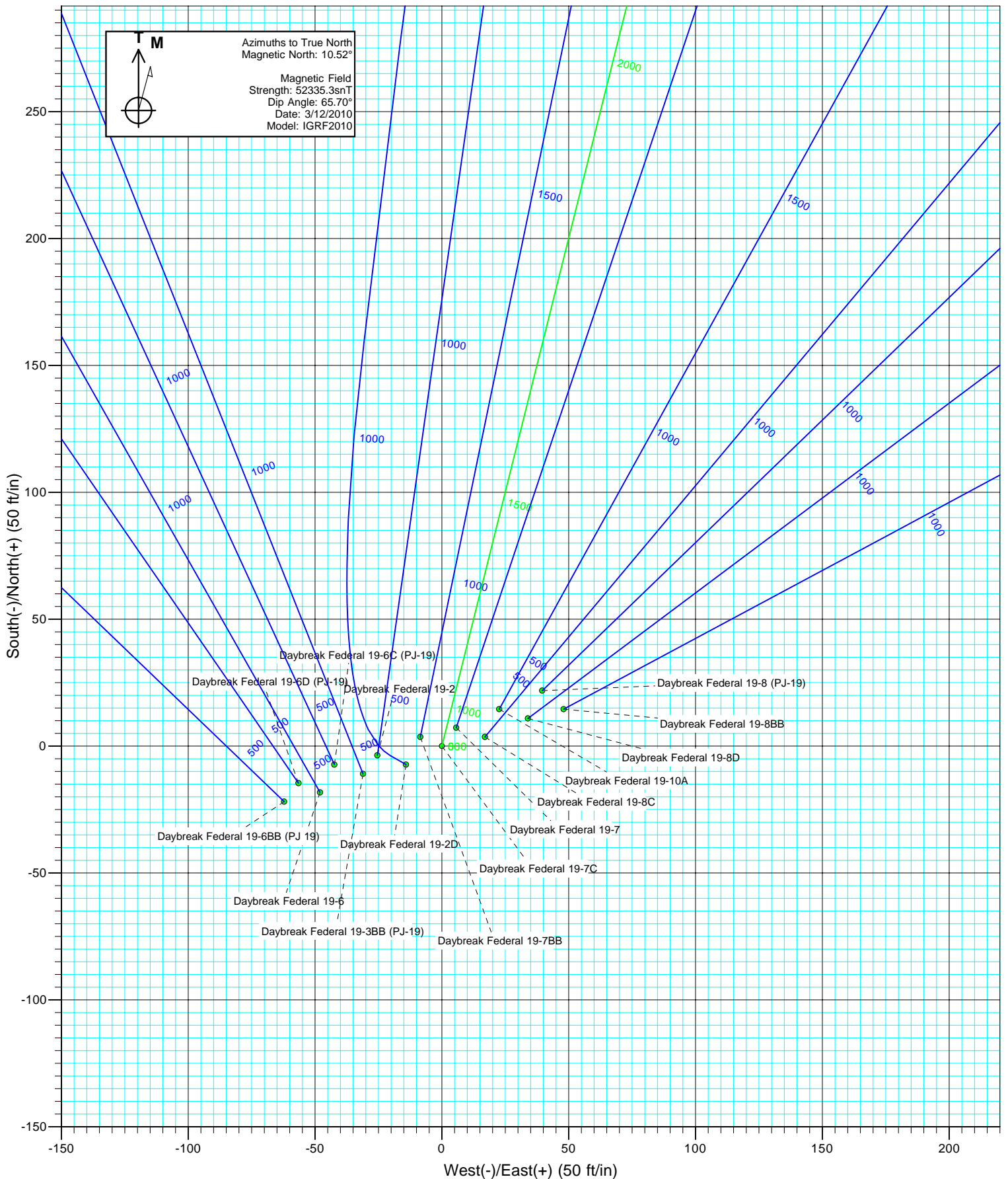
DESIGN DETAILS: Plan #2	
Job# 105XXX	
KBE @ 5449.0ft (Original Well Elev)	

Target	Azimuth	Origin Type	N/S	E/W
Daybreak Federal 19-7C (PJ-19) BHL	4.02	Slot	0.0	0.0

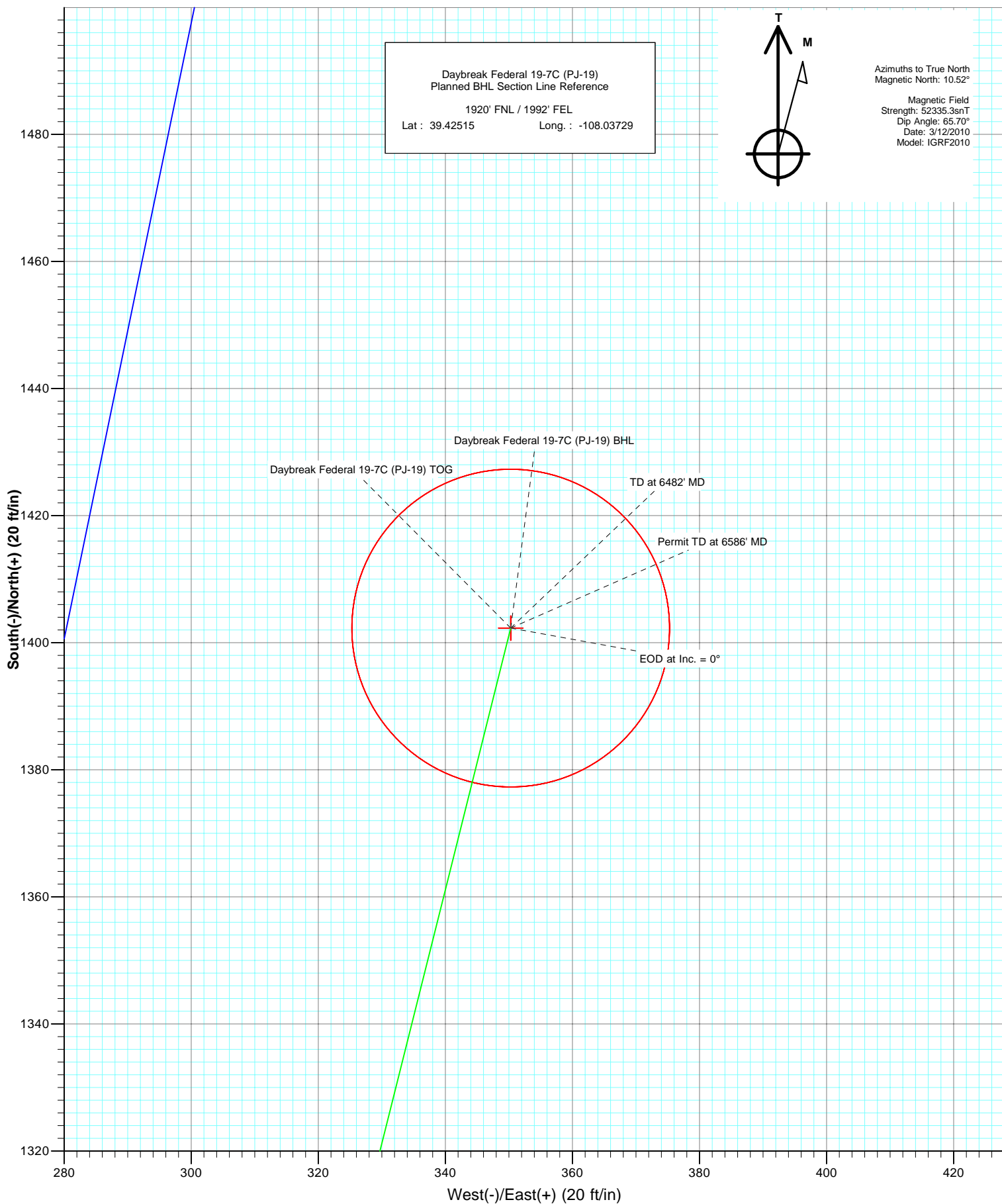


Project: S. Piceance  
Site: NWSE S19-T7S-R95W (PJ-19 Pad)  
Well: Daybreak Federal 19-7C (PJ-19)  
Wellbore: DD  
Design: Plan #2





Project: S. Piceance  
Site: NWSE S19-T7S-R95W (PJ-19 Pad)  
Well: Daybreak Federal 19-7C (PJ-19)  
Wellbore: DD  
Plan: Plan #2



# Cathedral Energy Services

## Planning Report

<b>Database:</b>	EDM 5000.1 US Multi Users DB	<b>Local Co-ordinate Reference:</b>	Well Daybreak Federal 19-7C (PJ-19)
<b>Company:</b>	EnCana Oil & Gas (USA) Inc	<b>TVD Reference:</b>	KBE @ 5449.0ft (Original Well Elev)
<b>Project:</b>	S. Piceance	<b>MD Reference:</b>	KBE @ 5449.0ft (Original Well Elev)
<b>Site:</b>	NWSE S19-T7S-R95W (PJ-19 Pad)	<b>North Reference:</b>	True
<b>Well:</b>	Daybreak Federal 19-7C (PJ-19)	<b>Survey Calculation Method:</b>	Minimum Curvature
<b>Wellbore:</b>	DD		
<b>Design:</b>	Plan #2		

<b>Project</b>	S. Piceance, Garfield County, CO		
<b>Map System:</b>	US State Plane 1983	<b>System Datum:</b>	Mean Sea Level
<b>Geo Datum:</b>	North American Datum 1983		
<b>Map Zone:</b>	Colorado Central Zone		

Site		NWSE S19-T7S-R95W (PJ-19 Pad)			
Site Position:		Northing:	1,588,373.67 ft	Latitude:	39.421340
From:	Lat/Long	Easting:	2,283,011.65 ft	Longitude:	-108.038360
Position Uncertainty:	0.0 ft	Slot Radius:	13.200 in	Grid Convergence:	-1.60 °

Well	Daybreak Federal 19-7C (PJ-19)					
Well Position	+N/-S	0.0 ft	Northing:	1,588,360.44 ft	Latitude:	39.421300
	+E/-W	0.0 ft	Easting:	2,282,963.24 ft	Longitude:	-108.038530
Position Uncertainty		0.0 ft	Wellhead Elevation:	ft	Ground Level:	5,427.0 ft

<b>Wellbore</b>	DD				
<b>Magnetics</b>	<b>Model Name</b>	<b>Sample Date</b>	<b>Declination</b>	<b>Dip Angle</b>	<b>Field Strength</b>
			(°)	(°)	(nT)
	IGRF2010	3/12/2010	10.52	65.70	52,335

<b>Design</b>	Plan #2			
<b>Audit Notes:</b>				
<b>Version:</b>	<b>Phase:</b>	PLAN	<b>Tie On Depth:</b>	0.0
<b>Vertical Section:</b>	<b>Depth From (TVD)</b>	<b>+N/-S</b>	<b>+E/-W</b>	<b>Direction</b>
	(ft)	(ft)	(ft)	(°)
	0.0	0.0	0.0	14.02

<b>Plan Sections</b>										
Measured Depth (ft)	Inclination (°)	Azimuth (°)	Vertical Depth (ft)	+N/-S (ft)	+E/-W (ft)	Dogleg Rate (°/100ft)	Build Rate (°/100ft)	Turn Rate (°/100ft)	TFO (°)	Target
0.0	0.00	0.00	0.0	0.0	0.0	0.00	0.00	0.00	0.00	
750.0	0.00	0.00	750.0	0.0	0.0	0.00	0.00	0.00	0.00	
950.0	6.01	14.02	949.6	10.2	2.5	3.00	3.00	0.00	14.02	
1,250.0	6.01	14.02	1,248.0	40.6	10.1	0.00	0.00	0.00	0.00	
2,086.9	31.12	14.03	2,035.0	297.1	74.2	3.00	3.00	0.00	0.01	
3,759.6	31.12	14.03	3,467.0	1,135.7	283.7	0.00	0.00	0.00	0.00	
4,796.8	0.00	0.00	4,454.0	1,402.3	350.3	3.00	-3.00	0.00	180.00	Daybreak Federal 19-
6,482.8	0.00	0.00	6,140.0	1,402.3	350.3	0.00	0.00	0.00	0.00	Daybreak Federal 19-
6,586.8	0.00	0.00	6,244.0	1,402.3	350.3	0.00	0.00	0.00	0.00	

# Cathedral Energy Services

## Planning Report

<b>Database:</b>	EDM 5000.1 US Multi Users DB	<b>Local Co-ordinate Reference:</b>	Well Daybreak Federal 19-7C (PJ-19)
<b>Company:</b>	EnCana Oil & Gas (USA) Inc	<b>TVD Reference:</b>	KBE @ 5449.0ft (Original Well Elev)
<b>Project:</b>	S. Piceance	<b>MD Reference:</b>	KBE @ 5449.0ft (Original Well Elev)
<b>Site:</b>	NWSE S19-T7S-R95W (PJ-19 Pad)	<b>North Reference:</b>	True
<b>Well:</b>	Daybreak Federal 19-7C (PJ-19)	<b>Survey Calculation Method:</b>	Minimum Curvature
<b>Wellbore:</b>	DD		
<b>Design:</b>	Plan #2		

### Planned Survey

Measured Depth (ft)	Inclination (°)	Azimuth (°)	Vertical Depth (ft)	+N/-S (ft)	+E/-W (ft)	Vertical Section (ft)	Dogleg Rate (°/100ft)	Build Rate (°/100ft)	Comments / Formations
0.0	0.00	0.00	0.0	0.0	0.0	0.0	0.00	0.00	
100.0	0.00	0.00	100.0	0.0	0.0	0.0	0.00	0.00	
200.0	0.00	0.00	200.0	0.0	0.0	0.0	0.00	0.00	
300.0	0.00	0.00	300.0	0.0	0.0	0.0	0.00	0.00	
400.0	0.00	0.00	400.0	0.0	0.0	0.0	0.00	0.00	
500.0	0.00	0.00	500.0	0.0	0.0	0.0	0.00	0.00	
600.0	0.00	0.00	600.0	0.0	0.0	0.0	0.00	0.00	
700.0	0.00	0.00	700.0	0.0	0.0	0.0	0.00	0.00	
750.0	0.00	0.00	750.0	0.0	0.0	0.0	0.00	0.00	KOP = 750' MD
800.0	1.50	14.02	800.0	0.6	0.2	0.7	3.00	3.00	
900.0	4.51	14.02	899.8	5.7	1.4	5.9	3.00	3.00	
950.0	6.01	14.02	949.6	10.2	2.5	10.5	3.00	3.00	Start 300' hold at 950' MD
1,000.0	6.01	14.02	999.4	15.2	3.8	15.7	0.00	0.00	
1,050.9	6.01	14.02	1,050.0	20.4	5.1	21.0	0.00	0.00	Surface Casing
1,100.0	6.01	14.02	1,098.8	25.4	6.3	26.2	0.00	0.00	
1,200.0	6.01	14.02	1,198.3	35.6	8.9	36.7	0.00	0.00	
1,250.0	6.01	14.02	1,248.0	40.6	10.1	41.9	0.00	0.00	End 300' hold at 1250' MD
1,300.0	7.51	14.02	1,297.6	46.4	11.6	47.8	3.00	3.00	
1,400.0	10.51	14.02	1,396.4	61.5	15.4	63.4	3.00	3.00	
1,500.0	13.51	14.02	1,494.2	81.7	20.4	84.2	3.00	3.00	
1,600.0	16.51	14.02	1,590.8	106.9	26.7	110.1	3.00	3.00	
1,700.0	19.51	14.02	1,685.9	136.8	34.2	141.1	3.00	3.00	
1,800.0	22.51	14.02	1,779.2	171.6	42.9	176.9	3.00	3.00	
1,900.0	25.51	14.02	1,870.5	211.1	52.7	217.6	3.00	3.00	
2,000.0	28.51	14.03	1,959.6	255.2	63.7	263.0	3.00	3.00	
2,086.9	31.12	14.03	2,035.0	297.1	74.2	306.2	3.00	3.00	EOB at Inc. = 31.12°
2,100.0	31.12	14.03	2,046.2	303.6	75.8	313.0	0.00	0.00	
2,200.0	31.12	14.03	2,131.8	353.8	88.4	364.6	0.00	0.00	
2,300.0	31.12	14.03	2,217.4	403.9	100.9	416.3	0.00	0.00	
2,400.0	31.12	14.03	2,303.1	454.0	113.4	468.0	0.00	0.00	
2,500.0	31.12	14.03	2,388.7	504.2	125.9	519.7	0.00	0.00	
2,600.0	31.12	14.03	2,474.3	554.3	138.5	571.4	0.00	0.00	
2,700.0	31.12	14.03	2,559.9	604.5	151.0	623.0	0.00	0.00	
2,800.0	31.12	14.03	2,645.5	654.6	163.5	674.7	0.00	0.00	
2,900.0	31.12	14.03	2,731.1	704.7	176.0	726.4	0.00	0.00	
3,000.0	31.12	14.03	2,816.7	754.9	188.6	778.1	0.00	0.00	
3,100.0	31.12	14.03	2,902.3	805.0	201.1	829.7	0.00	0.00	
3,200.0	31.12	14.03	2,988.0	855.1	213.6	881.4	0.00	0.00	
3,300.0	31.12	14.03	3,073.6	905.3	226.1	933.1	0.00	0.00	
3,400.0	31.12	14.03	3,159.2	955.4	238.7	984.8	0.00	0.00	
3,438.3	31.12	14.03	3,192.0	974.6	243.5	1,004.6	0.00	0.00	Mesa Verde
3,500.0	31.12	14.03	3,244.8	1,005.6	251.2	1,036.5	0.00	0.00	
3,600.0	31.12	14.03	3,330.4	1,055.7	263.7	1,088.1	0.00	0.00	
3,700.0	31.12	14.03	3,416.0	1,105.8	276.2	1,139.8	0.00	0.00	
3,759.6	31.12	14.03	3,467.0	1,135.7	283.7	1,170.6	0.00	0.00	Start Drop -3.00
3,800.0	29.90	14.03	3,501.8	1,155.6	288.7	1,191.1	3.00	-3.00	
3,900.0	26.90	14.03	3,589.8	1,201.8	300.2	1,238.7	3.00	-3.00	
4,000.0	23.90	14.03	3,680.1	1,243.4	310.6	1,281.6	3.00	-3.00	
4,100.0	20.90	14.03	3,772.6	1,280.3	319.8	1,319.7	3.00	-3.00	
4,143.1	19.61	14.03	3,813.0	1,294.8	323.4	1,334.6	3.00	-3.00	Williams Fork Fm
4,200.0	17.90	14.03	3,866.9	1,312.6	327.9	1,352.9	3.00	-3.00	
4,300.0	14.90	14.03	3,962.8	1,340.0	334.7	1,381.1	3.00	-3.00	

# Cathedral Energy Services

## Planning Report

<b>Database:</b>	EDM 5000.1 US Multi Users DB	<b>Local Co-ordinate Reference:</b>	Well Daybreak Federal 19-7C (PJ-19)
<b>Company:</b>	EnCana Oil & Gas (USA) Inc	<b>TVD Reference:</b>	KBE @ 5449.0ft (Original Well Elev)
<b>Project:</b>	S. Piceance	<b>MD Reference:</b>	KBE @ 5449.0ft (Original Well Elev)
<b>Site:</b>	NWSE S19-T7S-R95W (PJ-19 Pad)	<b>North Reference:</b>	True
<b>Well:</b>	Daybreak Federal 19-7C (PJ-19)	<b>Survey Calculation Method:</b>	Minimum Curvature
<b>Wellbore:</b>	DD		
<b>Design:</b>	Plan #2		

### Planned Survey

Measured Depth (ft)	Inclination (°)	Azimuth (°)	Vertical Depth (ft)	+N/-S (ft)	+E/-W (ft)	Vertical Section (ft)	Dogleg Rate (°/100ft)	Build Rate (°/100ft)	Comments / Formations
4,400.0	11.90	14.03	4,060.1	1,362.5	340.3	1,404.3	3.00	-3.00	
4,470.2	9.80	14.03	4,129.0	1,375.3	343.5	1,417.5	3.00	-3.00	TOG (Inc. = 9.8°)
4,500.0	8.90	14.03	4,158.4	1,380.0	344.7	1,422.4	3.00	-3.00	
4,600.0	5.90	14.03	4,257.6	1,392.5	347.8	1,435.3	3.00	-3.00	
4,700.0	2.90	14.03	4,357.2	1,399.9	349.7	1,442.9	3.00	-3.00	
4,796.8	0.00	0.00	4,454.0	1,402.3	350.3	1,445.4	3.00	-3.00	EOD at Inc. = 0° - Daybreak Federal 19-7C (PJ-19)
4,800.0	0.00	0.00	4,457.2	1,402.3	350.3	1,445.4	0.00	0.00	
4,900.0	0.00	0.00	4,557.2	1,402.3	350.3	1,445.4	0.00	0.00	
5,000.0	0.00	0.00	4,657.2	1,402.3	350.3	1,445.4	0.00	0.00	
5,100.0	0.00	0.00	4,757.2	1,402.3	350.3	1,445.4	0.00	0.00	
5,200.0	0.00	0.00	4,857.2	1,402.3	350.3	1,445.4	0.00	0.00	
5,300.0	0.00	0.00	4,957.2	1,402.3	350.3	1,445.4	0.00	0.00	
5,400.0	0.00	0.00	5,057.2	1,402.3	350.3	1,445.4	0.00	0.00	
5,500.0	0.00	0.00	5,157.2	1,402.3	350.3	1,445.4	0.00	0.00	
5,600.0	0.00	0.00	5,257.2	1,402.3	350.3	1,445.4	0.00	0.00	
5,700.0	0.00	0.00	5,357.2	1,402.3	350.3	1,445.4	0.00	0.00	
5,800.0	0.00	0.00	5,457.2	1,402.3	350.3	1,445.4	0.00	0.00	
5,900.0	0.00	0.00	5,557.2	1,402.3	350.3	1,445.4	0.00	0.00	
5,983.8	0.00	0.00	5,641.0	1,402.3	350.3	1,445.4	0.00	0.00	Coal Ridge
6,000.0	0.00	0.00	5,657.2	1,402.3	350.3	1,445.4	0.00	0.00	
6,100.0	0.00	0.00	5,757.2	1,402.3	350.3	1,445.4	0.00	0.00	
6,200.0	0.00	0.00	5,857.2	1,402.3	350.3	1,445.4	0.00	0.00	
6,300.0	0.00	0.00	5,957.2	1,402.3	350.3	1,445.4	0.00	0.00	
6,382.8	0.00	0.00	6,040.0	1,402.3	350.3	1,445.4	0.00	0.00	Rollins
6,400.0	0.00	0.00	6,057.2	1,402.3	350.3	1,445.4	0.00	0.00	
6,482.8	0.00	0.00	6,140.0	1,402.3	350.3	1,445.4	0.00	0.00	TD at 6482' MD - Daybreak Federal 19-7C (PJ-19)
6,500.0	0.00	0.00	6,157.2	1,402.3	350.3	1,445.4	0.00	0.00	
6,586.8	0.00	0.00	6,244.0	1,402.3	350.3	1,445.4	0.00	0.00	Permit TD at 6586' MD

### Targets

Target Name	Dip Angle (°)	Dip Dir. (°)	TVD (ft)	+N/-S (ft)	+E/-W (ft)	Northing (ft)	Easting (ft)	Latitude	Longitude
- hit/miss target									
- Shape									
Daybreak Federal 19-7C	0.00	0.00	4,454.0	1,402.3	350.3	1,589,752.41	2,283,352.56	39.425150	-108.037290
- plan hits target center									
- Point									
Daybreak Federal 19-7C	0.00	0.00	6,140.0	1,402.3	350.3	1,589,752.41	2,283,352.56	39.425150	-108.037290
- plan hits target center									
- Circle (radius 25.0)									

### Casing Points

Measured Depth (ft)	Vertical Depth (ft)	Name	Casing Diameter (in)	Hole Diameter (in)
1,050.9	1,050.0	Surface Casing	5.500	6.000

# Cathedral Energy Services

## Planning Report

<b>Database:</b>	EDM 5000.1 US Multi Users DB	<b>Local Co-ordinate Reference:</b>	Well Daybreak Federal 19-7C (PJ-19)
<b>Company:</b>	EnCana Oil & Gas (USA) Inc	<b>TVD Reference:</b>	KBE @ 5449.0ft (Original Well Elev)
<b>Project:</b>	S. Piceance	<b>MD Reference:</b>	KBE @ 5449.0ft (Original Well Elev)
<b>Site:</b>	NWSE S19-T7S-R95W (PJ-19 Pad)	<b>North Reference:</b>	True
<b>Well:</b>	Daybreak Federal 19-7C (PJ-19)	<b>Survey Calculation Method:</b>	Minimum Curvature
<b>Wellbore:</b>	DD		
<b>Design:</b>	Plan #2		

Formations						
Measured Depth (ft)	Vertical Depth (ft)	Name	Lithology	Dip (°)	Dip Direction (°)	
3,438.3	3,192.0	Mesa Verde		0.00		
4,143.1	3,813.0	Williams Fork Fm		0.00		
4,470.2	4,129.0	TOG (Inc. = 9.8°)		0.00		
5,983.8	5,641.0	Coal Ridge		0.00		
6,382.8	6,040.0	Rollins		0.00		

Plan Annotations					
Measured Depth (ft)	Vertical Depth (ft)	Local Coordinates			
		+N/-S (ft)	+E/-W (ft)	Comment	
750.0	750.0	0.0	0.0	KOP = 750' MD	
950.0	949.6	10.2	2.5	Start 300' hold at 950' MD	
1,250.0	1,248.0	40.6	10.1	End 300' hold at 1250' MD	
2,086.9	2,035.0	297.1	74.2	EOB at Inc. = 31.12°	
3,759.6	3,467.0	1,135.7	283.7	Start Drop -3.00	
4,796.8	4,454.0	1,402.3	350.3	EOD at Inc. = 0°	
6,482.8	6,140.0	1,402.3	350.3	TD at 6482' MD	
6,586.8	6,244.0	1,402.3	350.3	Permit TD at 6586' MD	

# **EnCana Oil & Gas (USA) Inc**

**S. Piceance**

**NWSE S19-T7S-R95W (PJ-19 Pad)**

**Daybreak Federal 19-7C (PJ-19)**

**DD**

**Plan #2**

## **Anticollision Report**

**31 March, 2010**



# Cathedral Energy Services

## Anticollision Report

<b>Company:</b>	EnCana Oil & Gas (USA) Inc	<b>Local Co-ordinate Reference:</b>	Well Daybreak Federal 19-7C (PJ-19)
<b>Project:</b>	S. Piceance	<b>TVD Reference:</b>	KBE @ 5449.0ft (Original Well Elev)
<b>Reference Site:</b>	NWSE S19-T7S-R95W (PJ-19 Pad)	<b>MD Reference:</b>	KBE @ 5449.0ft (Original Well Elev)
<b>Site Error:</b>	0.0ft	<b>North Reference:</b>	True
<b>Reference Well:</b>	Daybreak Federal 19-7C (PJ-19)	<b>Survey Calculation Method:</b>	Minimum Curvature
<b>Well Error:</b>	0.0ft	<b>Output errors are at</b>	2.00 sigma
<b>Reference Wellbore</b>	DD	<b>Database:</b>	EDM 5000.1 US Multi Users DB
<b>Reference Design:</b>	Plan #2	<b>Offset TVD Reference:</b>	Offset Datum

Reference	Plan #2		
Filter type:	NO GLOBAL FILTER: Using user defined selection & filtering criteria		
Interpolation Method:	Stations	Error Model:	Systematic Ellipse
Depth Range:	0.0 to 1,500.0ft	Scan Method:	Closest Approach 3D
Results Limited by:	Maximum center-center distance of 100.0ft	Error Surface:	Elliptical Conic
Warning Levels Evaluated at:	2.00 Sigma		

Survey Tool Program		Date	3/31/2010		
From (ft)	To (ft)	Survey (Wellbore)	Tool Name	Description	
0.0	6,580.5	Plan #2 (DD)	MWD	Geolink MWD	

Summary						
Site Name	Reference Measured Depth (ft)	Offset Measured Depth (ft)	Distance Between Centres (ft)	Distance Between Ellipses (ft)	Separation Factor	Warning
Offset Well - Wellbore - Design						
NWSE S19-T7S-R95W (PJ-19 Pad)						
Daybreak Federal 19-10A (PJ-19) - DD - Plan #1	200.0	200.0	26.9	26.3	43.272	CC, ES
Daybreak Federal 19-10A (PJ-19) - DD - Plan #1	400.0	396.9	36.3	35.0	27.607	SF
Daybreak Federal 19-2 (PJ-19) - DD - Plan #1	365.3	365.5	24.7	23.4	19.963	CC, ES
Daybreak Federal 19-2 (PJ-19) - DD - Plan #1	500.0	498.7	29.6	27.8	16.325	SF
Daybreak Federal 19-2D (PJ-19) - DD - Plan #1	200.0	200.0	15.9	15.3	25.578	CC, ES
Daybreak Federal 19-2D (PJ-19) - DD - Plan #1	400.0	398.9	22.9	21.6	17.030	SF
Daybreak Federal 19-3BB (PJ-19) - DD - Plan #1	300.0	300.0	32.9	32.0	33.945	CC
Daybreak Federal 19-3BB (PJ-19) - DD - Plan #1	400.0	399.8	33.1	31.8	25.010	ES
Daybreak Federal 19-3BB (PJ-19) - DD - Plan #1	600.0	597.4	41.2	39.0	19.319	SF
Daybreak Federal 19-6 (PJ-19) - DD - Plan #1	300.0	300.0	51.4	50.4	52.929	CC, ES
Daybreak Federal 19-6 (PJ-19) - DD - Plan #1	700.0	692.7	70.6	68.1	27.316	SF
Daybreak Federal 19-6BB (PJ 19) - DD - Plan #2	200.0	200.0	65.9	65.3	106.032	CC, ES
Daybreak Federal 19-6BB (PJ 19) - DD - Plan #2	600.0	588.4	91.8	89.6	41.236	SF
Daybreak Federal 19-6C (PJ-19) - DD - Plan #1	200.0	200.0	43.0	42.4	69.200	CC, ES
Daybreak Federal 19-6C (PJ-19) - DD - Plan #1	600.0	592.1	66.8	64.6	29.954	SF
Daybreak Federal 19-6D (PJ-19) - DD - Plan #1	200.0	200.0	58.3	57.7	93.908	CC, ES
Daybreak Federal 19-6D (PJ-19) - DD - Plan #1	600.0	590.3	82.1	79.8	36.591	SF
Daybreak Federal 19-7 (PJ-19) - DD - Plan #1	200.0	200.0	9.2	8.6	14.837	CC, ES
Daybreak Federal 19-7 (PJ-19) - DD - Plan #1	300.0	299.5	11.7	10.7	12.077	SF
Daybreak Federal 19-7BB (PJ-19) - DD - Plan #1	500.0	500.0	9.2	7.6	5.529	CC, ES
Daybreak Federal 19-7BB (PJ-19) - DD - Plan #1	600.0	599.8	10.1	8.1	4.987	SF
Daybreak Federal 19-8 (PJ-19) - DD - Plan #1	200.0	200.0	45.2	44.6	72.724	CC, ES
Daybreak Federal 19-8 (PJ-19) - DD - Plan #1	500.0	491.0	67.6	65.9	40.839	SF
Daybreak Federal 19-8BB (PJ-19) - DD - Plan #1	200.0	200.0	50.2	49.6	80.772	CC, ES
Daybreak Federal 19-8BB (PJ-19) - DD - Plan #1	500.0	490.2	72.7	71.1	43.965	SF
Daybreak Federal 19-8C (PJ-19 Pad) - DD - Plan #2	200.0	200.0	17.3	16.7	27.903	CC, ES
Daybreak Federal 19-8C (PJ-19 Pad) - DD - Plan #2	400.0	397.9	26.3	25.0	19.963	SF
Daybreak Federal 19-8D (PJ-19) - DD - Plan #1	200.0	200.0	35.6	35.0	57.324	CC, ES
Daybreak Federal 19-8D (PJ-19) - DD - Plan #1	400.0	395.8	45.4	44.1	34.627	SF

# Cathedral Energy Services

## Anticollision Report

<b>Company:</b>	EnCana Oil & Gas (USA) Inc	<b>Local Co-ordinate Reference:</b>	Well Daybreak Federal 19-7C (PJ-19)
<b>Project:</b>	S. Piceance	<b>TVD Reference:</b>	KBE @ 5449.0ft (Original Well Elev)
<b>Reference Site:</b>	NWSE S19-T7S-R95W (PJ-19 Pad)	<b>MD Reference:</b>	KBE @ 5449.0ft (Original Well Elev)
<b>Site Error:</b>	0.0ft	<b>North Reference:</b>	True
<b>Reference Well:</b>	Daybreak Federal 19-7C (PJ-19)	<b>Survey Calculation Method:</b>	Minimum Curvature
<b>Well Error:</b>	0.0ft	<b>Output errors are at</b>	2.00 sigma
<b>Reference Wellbore</b>	DD	<b>Database:</b>	EDM 5000.1 US Multi Users DB
<b>Reference Design:</b>	Plan #2	<b>Offset TVD Reference:</b>	Offset Datum

<b>Offset Design</b>												<b>Offset Site Error:</b>	0.0 ft
Survey Program: 0-MWD												<b>Offset Well Error:</b>	0.0 ft
NWSE S19-T7S-R95W (PJ-19 Pad) - Daybreak Federal 19-10A (PJ-19) - DD - Plan #1													
Reference		Offset		Semi Major Axis		Highside Toolface (°)	Distance		Total Uncertainty Axis	Separation Factor	Warning		
Measured Depth (ft)	Vertical Depth (ft)	Measured Depth (ft)	Vertical Depth (ft)	Reference (ft)	Offset (ft)		Offset Wellbore Centre +N/-S (ft)	+E/-W (ft)					
0.0	0.0	0.0	0.0	0.0	0.0	57.20	14.6	22.6	26.9				
100.0	100.0	100.0	100.0	0.1	0.1	57.20	14.6	22.6	26.9	26.6	0.27	98.750	
200.0	200.0	200.0	200.0	0.3	0.3	57.20	14.6	22.6	26.9	26.3	0.62	43.272 CC, ES	
300.0	300.0	298.7	298.6	0.5	0.5	54.82	16.8	23.8	29.2	28.2	0.97	30.136	
400.0	400.0	396.9	396.5	0.7	0.7	49.56	23.4	27.5	36.3	35.0	1.31	27.607 SF	
500.0	500.0	494.0	492.8	0.8	1.0	44.31	34.3	33.5	48.5	46.9	1.66	29.251	
600.0	600.0	589.6	586.9	1.0	1.3	40.29	49.2	41.7	65.9	63.9	2.00	32.910	
700.0	700.0	686.7	681.8	1.2	1.7	37.55	67.2	51.6	86.7	84.3	2.35	36.894	
750.0	750.0	735.6	729.6	1.3	1.9	36.62	76.2	56.6	97.1	94.6	2.52	38.474	

# Cathedral Energy Services

## Anticollision Report

<b>Company:</b>	EnCana Oil & Gas (USA) Inc	<b>Local Co-ordinate Reference:</b>	Well Daybreak Federal 19-7C (PJ-19)
<b>Project:</b>	S. Piceance	<b>TVD Reference:</b>	KBE @ 5449.0ft (Original Well Elev)
<b>Reference Site:</b>	NWSE S19-T7S-R95W (PJ-19 Pad)	<b>MD Reference:</b>	KBE @ 5449.0ft (Original Well Elev)
<b>Site Error:</b>	0.0ft	<b>North Reference:</b>	True
<b>Reference Well:</b>	Daybreak Federal 19-7C (PJ-19)	<b>Survey Calculation Method:</b>	Minimum Curvature
<b>Well Error:</b>	0.0ft	<b>Output errors are at</b>	2.00 sigma
<b>Reference Wellbore</b>	DD	<b>Database:</b>	EDM 5000.1 US Multi Users DB
<b>Reference Design:</b>	Plan #2	<b>Offset TVD Reference:</b>	Offset Datum

<b>Offset Design</b> NWSE S19-T7S-R95W (PJ-19 Pad) - Daybreak Federal 19-2 (PJ-19) - DD - Plan #1												<b>Offset Site Error:</b>	0.0 ft
Survey Program: 0-MWD												<b>Offset Well Error:</b>	0.0 ft
Reference		Offset		Semi Major Axis		Distance							
Measured Depth (ft)	Vertical Depth (ft)	Measured Depth (ft)	Vertical Depth (ft)	Reference (ft)	Offset (ft)	Highside Toolface (°)	Offset Wellbore Centre +N/-S (ft)	+E/-W (ft)	Between Centres (ft)	Between Ellipses (ft)	Total Uncertainty Axis	Separation Factor	Warning
0.0	0.0	0.0	0.0	0.0	0.0	-98.16	-3.6	-25.4	25.7				
100.0	100.0	100.0	100.0	0.1	0.1	-98.16	-3.6	-25.4	25.7	25.4	0.27	94.337	
200.0	200.0	200.0	200.0	0.3	0.3	-98.16	-3.6	-25.4	25.7	25.1	0.62	41.339	
300.0	300.0	300.3	300.2	0.5	0.5	-92.38	-1.0	-25.1	25.1	24.1	0.98	25.640	
365.3	365.3	365.5	365.3	0.6	0.6	-81.95	3.5	-24.4	24.7	23.4	1.24	19.963 CC, ES	
400.0	400.0	400.0	399.6	0.7	0.7	-74.35	6.7	-24.0	24.9	23.5	1.37	18.118	
500.0	500.0	498.7	497.5	0.8	1.0	-48.75	19.4	-22.2	29.6	27.8	1.81	16.325 SF	
600.0	600.0	595.7	592.9	1.0	1.3	-28.15	36.8	-19.7	42.3	40.1	2.22	19.041	
700.0	700.0	690.8	685.4	1.2	1.8	-15.88	58.4	-16.6	62.5	59.9	2.61	23.989	
750.0	750.0	737.4	730.4	1.3	2.0	-11.89	70.7	-14.9	74.9	72.1	2.79	26.803	
800.0	800.0	783.6	774.6	1.4	2.2	-22.84	84.0	-13.0	88.1	85.3	2.79	31.607	

# Cathedral Energy Services

## Anticollision Report

<b>Company:</b>	EnCana Oil & Gas (USA) Inc	<b>Local Co-ordinate Reference:</b>	Well Daybreak Federal 19-7C (PJ-19)
<b>Project:</b>	S. Piceance	<b>TVD Reference:</b>	KBE @ 5449.0ft (Original Well Elev)
<b>Reference Site:</b>	NWSE S19-T7S-R95W (PJ-19 Pad)	<b>MD Reference:</b>	KBE @ 5449.0ft (Original Well Elev)
<b>Site Error:</b>	0.0ft	<b>North Reference:</b>	True
<b>Reference Well:</b>	Daybreak Federal 19-7C (PJ-19)	<b>Survey Calculation Method:</b>	Minimum Curvature
<b>Well Error:</b>	0.0ft	<b>Output errors are at</b>	2.00 sigma
<b>Reference Wellbore</b>	DD	<b>Database:</b>	EDM 5000.1 US Multi Users DB
<b>Reference Design:</b>	Plan #2	<b>Offset TVD Reference:</b>	Offset Datum

<b>Offset Design</b> NWSE S19-T7S-R95W (PJ-19 Pad) - Daybreak Federal 19-2D (PJ-19) - DD - Plan #1												<b>Offset Site Error:</b>	0.0 ft
Survey Program: 0-MWD												<b>Offset Well Error:</b>	0.0 ft
Reference		Offset		Semi Major Axis		Distance							
Measured Depth (ft)	Vertical Depth (ft)	Measured Depth (ft)	Vertical Depth (ft)	Reference (ft)	Offset (ft)	Highside Toolface (°)	Offset Wellbore Centre +N/-S (ft)	+E/-W (ft)	Between Centres (ft)	Between Ellipses (ft)	Total Uncertainty Axis	Separation Factor	Warning
0.0	0.0	0.0	0.0	0.0	0.0	-117.28	-7.3	-14.1	15.9				
100.0	100.0	100.0	100.0	0.1	0.1	-117.28	-7.3	-14.1	15.9	15.6	0.27	58.371	
200.0	200.0	200.0	200.0	0.3	0.3	-117.28	-7.3	-14.1	15.9	15.3	0.62	25.578 CC, ES	
300.0	300.0	299.5	299.4	0.5	0.5	-110.10	-6.0	-16.4	17.4	16.5	0.98	17.861	
400.0	400.0	398.9	398.5	0.7	0.7	-95.00	-2.0	-22.8	22.9	21.6	1.34	17.030 SF	
500.0	500.0	498.6	497.7	0.8	0.9	-77.49	6.4	-28.9	29.7	28.0	1.73	17.196	
600.0	600.0	597.5	595.6	1.0	1.2	-59.60	19.6	-33.4	39.0	36.9	2.12	18.420	
700.0	700.0	695.0	691.4	1.2	1.6	-44.16	37.3	-36.2	52.7	50.2	2.50	21.083	
750.0	750.0	743.0	738.3	1.3	1.8	-37.80	47.7	-37.0	61.5	58.8	2.69	22.827	
800.0	800.0	790.7	784.6	1.4	2.0	-46.48	59.2	-37.4	71.2	68.5	2.76	25.837	
900.0	899.8	885.4	875.7	1.5	2.4	-39.19	85.1	-37.1	91.5	88.4	3.11	29.427	

# Cathedral Energy Services

## Anticollision Report

<b>Company:</b>	EnCana Oil & Gas (USA) Inc	<b>Local Co-ordinate Reference:</b>	Well Daybreak Federal 19-7C (PJ-19)
<b>Project:</b>	S. Piceance	<b>TVD Reference:</b>	KBE @ 5449.0ft (Original Well Elev)
<b>Reference Site:</b>	NWSE S19-T7S-R95W (PJ-19 Pad)	<b>MD Reference:</b>	KBE @ 5449.0ft (Original Well Elev)
<b>Site Error:</b>	0.0ft	<b>North Reference:</b>	True
<b>Reference Well:</b>	Daybreak Federal 19-7C (PJ-19)	<b>Survey Calculation Method:</b>	Minimum Curvature
<b>Well Error:</b>	0.0ft	<b>Output errors are at</b>	2.00 sigma
<b>Reference Wellbore</b>	DD	<b>Database:</b>	EDM 5000.1 US Multi Users DB
<b>Reference Design:</b>	Plan #2	<b>Offset TVD Reference:</b>	Offset Datum

Offset Design NWSE S19-T7S-R95W (PJ-19 Pad) - Daybreak Federal 19-3BB (PJ-19) - DD - Plan #1												Offset Site Error: 0.0 ft			
Survey Program: 0-MWD														Offset Well Error: 0.0 ft	
Reference		Offset		Semi Major Axis			Distance							Warning	
Measured Depth (ft)	Vertical Depth (ft)	Measured Depth (ft)	Vertical Depth (ft)	Reference (ft)	Offset (ft)	Highside Toolface (°)	Offset Wellbore Centre +N/-S (ft)	+E/-W (ft)	Between Centres (ft)	Between Ellipses (ft)	Total Uncertainty Axis	Separation Factor			
0.0	0.0	0.0	0.0	0.0	0.0	-109.37	-10.9	-31.1	32.9						
100.0	100.0	100.0	100.0	0.1	0.1	-109.37	-10.9	-31.1	32.9	32.7	0.27	120.983			
200.0	200.0	200.0	200.0	0.3	0.3	-109.37	-10.9	-31.1	32.9	32.3	0.62	53.015			
300.0	300.0	300.0	300.0	0.5	0.5	-109.37	-10.9	-31.1	32.9	32.0	0.97	33.945 CC			
400.0	400.0	399.8	399.8	0.7	0.7	-104.86	-8.5	-32.0	33.1	31.8	1.33	25.010 ES			
500.0	500.0	499.1	498.8	0.8	0.9	-92.11	-1.3	-34.9	34.9	33.2	1.71	20.435			
600.0	600.0	597.4	596.2	1.0	1.1	-75.09	10.5	-39.6	41.2	39.0	2.13	19.319 SF			
700.0	700.0	694.0	691.2	1.2	1.5	-59.86	26.7	-46.0	53.9	51.4	2.55	21.136			
750.0	750.0	741.6	737.7	1.3	1.7	-53.91	36.3	-49.8	62.9	60.1	2.76	22.779			
800.0	800.0	788.8	783.5	1.4	1.9	-63.23	46.9	-54.0	73.1	70.3	2.83	25.851			
900.0	899.8	882.2	873.2	1.5	2.4	-57.90	70.9	-63.6	95.8	92.6	3.19	30.030			

# Cathedral Energy Services

## Anticollision Report

<b>Company:</b>	EnCana Oil & Gas (USA) Inc	<b>Local Co-ordinate Reference:</b>	Well Daybreak Federal 19-7C (PJ-19)
<b>Project:</b>	S. Piceance	<b>TVD Reference:</b>	KBE @ 5449.0ft (Original Well Elev)
<b>Reference Site:</b>	NWSE S19-T7S-R95W (PJ-19 Pad)	<b>MD Reference:</b>	KBE @ 5449.0ft (Original Well Elev)
<b>Site Error:</b>	0.0ft	<b>North Reference:</b>	True
<b>Reference Well:</b>	Daybreak Federal 19-7C (PJ-19)	<b>Survey Calculation Method:</b>	Minimum Curvature
<b>Well Error:</b>	0.0ft	<b>Output errors are at</b>	2.00 sigma
<b>Reference Wellbore</b>	DD	<b>Database:</b>	EDM 5000.1 US Multi Users DB
<b>Reference Design:</b>	Plan #2	<b>Offset TVD Reference:</b>	Offset Datum

<b>Offset Design</b> NWSE S19-T7S-R95W (PJ-19 Pad) - Daybreak Federal 19-6 (PJ-19) - DD - Plan #1													Offset Site Error:	0.0 ft
Survey Program: 0-MWD													Offset Well Error:	0.0 ft
Reference		Offset		Semi Major Axis			Distance						Warning	
Measured Depth (ft)	Vertical Depth (ft)	Measured Depth (ft)	Vertical Depth (ft)	Reference (ft)	Offset (ft)	Highside Toolface (°)	Offset Wellbore Centre +N/-S (ft)	+E/-W (ft)	Between Centres (ft)	Between Ellipses (ft)	Total Uncertainty Axis	Separation Factor		
0.0	0.0	0.0	0.0	0.0	0.0	-110.77	-18.2	-48.0	51.4					
100.0	100.0	100.0	100.0	0.1	0.1	-110.77	-18.2	-48.0	51.4	51.1	0.27	188.643		
200.0	200.0	200.0	200.0	0.3	0.3	-110.77	-18.2	-48.0	51.4	50.7	0.62	82.664		
300.0	300.0	300.0	300.0	0.5	0.5	-110.77	-18.2	-48.0	51.4	50.4	0.97	52.929	CC, ES	
400.0	400.0	399.5	399.5	0.7	0.7	-107.93	-16.0	-49.3	51.8	50.5	1.32	39.118		
500.0	500.0	498.5	498.1	0.8	0.9	-99.88	-9.3	-53.1	53.9	52.2	1.71	31.570		
600.0	600.0	596.4	595.2	1.0	1.1	-88.31	1.7	-59.4	59.6	57.4	2.14	27.894		
700.0	700.0	692.7	690.0	1.2	1.5	-76.11	16.8	-67.9	70.6	68.1	2.59	27.316	SF	
750.0	750.0	740.2	736.3	1.3	1.7	-70.58	25.7	-72.9	78.6	75.7	2.82	27.900		
800.0	800.0	787.2	781.9	1.4	1.9	-79.79	35.5	-78.5	88.0	85.1	2.90	30.304		

# Cathedral Energy Services

## Anticollision Report

<b>Company:</b>	EnCana Oil & Gas (USA) Inc	<b>Local Co-ordinate Reference:</b>	Well Daybreak Federal 19-7C (PJ-19)
<b>Project:</b>	S. Piceance	<b>TVD Reference:</b>	KBE @ 5449.0ft (Original Well Elev)
<b>Reference Site:</b>	NWSE S19-T7S-R95W (PJ-19 Pad)	<b>MD Reference:</b>	KBE @ 5449.0ft (Original Well Elev)
<b>Site Error:</b>	0.0ft	<b>North Reference:</b>	True
<b>Reference Well:</b>	Daybreak Federal 19-7C (PJ-19)	<b>Survey Calculation Method:</b>	Minimum Curvature
<b>Well Error:</b>	0.0ft	<b>Output errors are at</b>	2.00 sigma
<b>Reference Wellbore</b>	DD	<b>Database:</b>	EDM 5000.1 US Multi Users DB
<b>Reference Design:</b>	Plan #2	<b>Offset TVD Reference:</b>	Offset Datum

<b>Offset Design</b> NWSE S19-T7S-R95W (PJ-19 Pad) - Daybreak Federal 19-6BB (PJ 19) - DD - Plan #2													<b>Offset Site Error:</b> 0.0 ft
Survey Program: 0-MWD													<b>Offset Well Error:</b> 0.0 ft
Reference		Offset		Semi Major Axis		Distance							
Measured Depth (ft)	Vertical Depth (ft)	Measured Depth (ft)	Vertical Depth (ft)	Reference (ft)	Offset (ft)	Highside Toolface (°)	Offset Wellbore Centre +N/-S (ft)	+E/-W (ft)	Between Centres (ft)	Between Ellipses (ft)	Total Uncertainty Axis	Separation Factor	Warning
0.0	0.0	0.0	0.0	0.0	0.0	-109.38	-21.9	-62.2	65.9				
100.0	100.0	100.0	100.0	0.1	0.1	-109.38	-21.9	-62.2	65.9	65.6	0.27	241.971	
200.0	200.0	200.0	200.0	0.3	0.3	-109.38	-21.9	-62.2	65.9	65.3	0.62	106.032 CC, ES	
300.0	300.0	298.4	298.3	0.5	0.5	-107.44	-20.1	-64.0	67.1	66.1	0.98	68.775	
400.0	400.0	396.2	395.9	0.7	0.7	-102.10	-14.9	-69.4	71.1	69.8	1.36	52.298	
500.0	500.0	493.1	491.9	0.8	1.0	-94.61	-6.3	-78.3	79.0	77.2	1.78	44.345	
600.0	600.0	588.4	585.8	1.0	1.3	-86.59	5.4	-90.6	91.8	89.6	2.23	41.236 SF	

# Cathedral Energy Services

## Anticollision Report

<b>Company:</b>	EnCana Oil & Gas (USA) Inc	<b>Local Co-ordinate Reference:</b>	Well Daybreak Federal 19-7C (PJ-19)
<b>Project:</b>	S. Piceance	<b>TVD Reference:</b>	KBE @ 5449.0ft (Original Well Elev)
<b>Reference Site:</b>	NWSE S19-T7S-R95W (PJ-19 Pad)	<b>MD Reference:</b>	KBE @ 5449.0ft (Original Well Elev)
<b>Site Error:</b>	0.0ft	<b>North Reference:</b>	True
<b>Reference Well:</b>	Daybreak Federal 19-7C (PJ-19)	<b>Survey Calculation Method:</b>	Minimum Curvature
<b>Well Error:</b>	0.0ft	<b>Output errors are at</b>	2.00 sigma
<b>Reference Wellbore</b>	DD	<b>Database:</b>	EDM 5000.1 US Multi Users DB
<b>Reference Design:</b>	Plan #2	<b>Offset TVD Reference:</b>	Offset Datum

Offset Design NWSE S19-T7S-R95W (PJ-19 Pad) - Daybreak Federal 19-6C (PJ-19) - DD - Plan #1													Offset Site Error: 0.0 ft	
Survey Program: 0-MWD													Offset Well Error: 0.0 ft	
Reference		Offset		Semi Major Axis			Distance							
Measured Depth (ft)	Vertical Depth (ft)	Measured Depth (ft)	Vertical Depth (ft)	Reference (ft)	Offset (ft)	Highside Toolface (°)	Offset Wellbore Centre +N/-S (ft)	+E/-W (ft)	Between Centres (ft)	Between Ellipses (ft)	Total Uncertainty Axis	Separation Factor	Warning	
0.0	0.0	0.0	0.0	0.0	0.0	-99.75	-7.3	-42.4	43.0					
100.0	100.0	100.0	100.0	0.1	0.1	-99.75	-7.3	-42.4	43.0	42.7	0.27	157.918		
200.0	200.0	200.0	200.0	0.3	0.3	-99.75	-7.3	-42.4	43.0	42.4	0.62	69.200	CC, ES	
300.0	300.0	299.3	299.3	0.5	0.5	-96.48	-4.9	-43.5	43.7	42.8	0.98	44.739		
400.0	400.0	398.1	397.8	0.7	0.7	-87.49	2.0	-46.7	46.8	45.4	1.37	34.201		
500.0	500.0	495.9	494.7	0.8	1.0	-75.43	13.5	-51.9	53.9	52.1	1.79	30.062		
600.0	600.0	592.1	589.3	1.0	1.3	-63.75	29.2	-59.1	66.8	64.6	2.23	29.954	SF	
700.0	700.0	686.3	681.1	1.2	1.7	-54.45	48.7	-68.1	85.8	83.2	2.65	32.345		
750.0	750.0	732.6	725.7	1.3	2.0	-50.77	59.7	-73.2	97.6	94.7	2.86	34.094		



# Cathedral Energy Services

## Anticollision Report

<b>Company:</b>	EnCana Oil & Gas (USA) Inc	<b>Local Co-ordinate Reference:</b>	Well Daybreak Federal 19-7C (PJ-19)
<b>Project:</b>	S. Piceance	<b>TVD Reference:</b>	KBE @ 5449.0ft (Original Well Elev)
<b>Reference Site:</b>	NWSE S19-T7S-R95W (PJ-19 Pad)	<b>MD Reference:</b>	KBE @ 5449.0ft (Original Well Elev)
<b>Site Error:</b>	0.0ft	<b>North Reference:</b>	True
<b>Reference Well:</b>	Daybreak Federal 19-7C (PJ-19)	<b>Survey Calculation Method:</b>	Minimum Curvature
<b>Well Error:</b>	0.0ft	<b>Output errors are at</b>	2.00 sigma
<b>Reference Wellbore</b>	DD	<b>Database:</b>	EDM 5000.1 US Multi Users DB
<b>Reference Design:</b>	Plan #2	<b>Offset TVD Reference:</b>	Offset Datum

Offset Design NWSE S19-T7S-R95W (PJ-19 Pad) - Daybreak Federal 19-6D (PJ-19) - DD - Plan #1													Offset Site Error: 0.0 ft			
Survey Program: 0-MWD															Offset Well Error: 0.0 ft	
Reference		Offset		Semi Major Axis			Distance							Warning		
Measured Depth (ft)	Vertical Depth (ft)	Measured Depth (ft)	Vertical Depth (ft)	Reference (ft)	Offset (ft)	Highside Toolface (°)	Offset Wellbore Centre +N/-S (ft) +E/-W (ft)		Between Centres (ft)	Between Ellipses (ft)	Total Uncertainty Axis	Separation Factor				
0.0	0.0	0.0	0.0	0.0	0.0	-104.46	-14.6	-56.5	58.3							
100.0	100.0	100.0	100.0	0.1	0.1	-104.46	-14.6	-56.5	58.3	58.1	0.27	214.302				
200.0	200.0	200.0	200.0	0.3	0.3	-104.46	-14.6	-56.5	58.3	57.7	0.62	93.908 CC, ES				
300.0	300.0	298.9	298.8	0.5	0.5	-102.14	-12.5	-58.0	59.3	58.3	0.98	60.705				
400.0	400.0	397.2	396.9	0.7	0.7	-95.68	-6.2	-62.3	62.7	61.3	1.36	45.919				
500.0	500.0	494.5	493.4	0.8	1.0	-86.62	4.1	-69.4	69.8	68.0	1.79	38.935				
600.0	600.0	590.3	587.6	1.0	1.3	-77.06	18.2	-79.1	82.1	79.8	2.24	36.591 SF				

# Cathedral Energy Services

## Anticollision Report

<b>Company:</b>	EnCana Oil & Gas (USA) Inc	<b>Local Co-ordinate Reference:</b>	Well Daybreak Federal 19-7C (PJ-19)
<b>Project:</b>	S. Piceance	<b>TVD Reference:</b>	KBE @ 5449.0ft (Original Well Elev)
<b>Reference Site:</b>	NWSE S19-T7S-R95W (PJ-19 Pad)	<b>MD Reference:</b>	KBE @ 5449.0ft (Original Well Elev)
<b>Site Error:</b>	0.0ft	<b>North Reference:</b>	True
<b>Reference Well:</b>	Daybreak Federal 19-7C (PJ-19)	<b>Survey Calculation Method:</b>	Minimum Curvature
<b>Well Error:</b>	0.0ft	<b>Output errors are at</b>	2.00 sigma
<b>Reference Wellbore</b>	DD	<b>Database:</b>	EDM 5000.1 US Multi Users DB
<b>Reference Design:</b>	Plan #2	<b>Offset TVD Reference:</b>	Offset Datum

Offset Design NWSE S19-T7S-R95W (PJ-19 Pad) - Daybreak Federal 19-7 (PJ-19) - DD - Plan #1													Offset Site Error:	0.0 ft
Survey Program: 0-MWD													Offset Well Error:	0.0 ft
Reference		Offset		Semi Major Axis			Distance						Warning	
Measured Depth (ft)	Vertical Depth (ft)	Measured Depth (ft)	Vertical Depth (ft)	Reference (ft)	Offset (ft)	Highside Toolface (°)	Offset Wellbore Centre +N/-S (ft)	+E/-W (ft)	Between Centres (ft)	Between Ellipses (ft)	Total Uncertainty Axis	Separation Factor		
0.0	0.0	0.0	0.0	0.0	0.0	37.80	7.3	5.7	9.2					
100.0	100.0	100.0	100.0	0.1	0.1	37.80	7.3	5.7	9.2	8.9	0.27	33.859		
200.0	200.0	200.0	200.0	0.3	0.3	37.80	7.3	5.7	9.2	8.6	0.62	14.837 CC, ES		
300.0	300.0	299.5	299.4	0.5	0.5	33.59	9.7	6.5	11.7	10.7	0.97	12.077 SF		
400.0	400.0	398.4	398.0	0.7	0.7	27.59	17.0	8.9	19.3	18.0	1.32	14.682		
500.0	500.0	496.2	495.1	0.8	1.0	23.98	29.0	12.9	32.2	30.5	1.67	19.304		
600.0	600.0	592.6	589.8	1.0	1.3	22.04	45.4	18.4	50.0	48.0	2.02	24.808		
700.0	700.0	686.9	681.6	1.2	1.7	20.95	65.8	25.2	72.8	70.5	2.37	30.707		
750.0	750.0	733.2	726.3	1.3	2.0	20.58	77.4	29.1	86.0	83.5	2.55	33.717		
800.0	800.0	779.1	770.2	1.4	2.2	6.26	89.9	33.2	99.8	97.1	2.68	37.208		

# Cathedral Energy Services

## Anticollision Report

<b>Company:</b>	EnCana Oil & Gas (USA) Inc	<b>Local Co-ordinate Reference:</b>	Well Daybreak Federal 19-7C (PJ-19)
<b>Project:</b>	S. Piceance	<b>TVD Reference:</b>	KBE @ 5449.0ft (Original Well Elev)
<b>Reference Site:</b>	NWSE S19-T7S-R95W (PJ-19 Pad)	<b>MD Reference:</b>	KBE @ 5449.0ft (Original Well Elev)
<b>Site Error:</b>	0.0ft	<b>North Reference:</b>	True
<b>Reference Well:</b>	Daybreak Federal 19-7C (PJ-19)	<b>Survey Calculation Method:</b>	Minimum Curvature
<b>Well Error:</b>	0.0ft	<b>Output errors are at</b>	2.00 sigma
<b>Reference Wellbore</b>	DD	<b>Database:</b>	EDM 5000.1 US Multi Users DB
<b>Reference Design:</b>	Plan #2	<b>Offset TVD Reference:</b>	Offset Datum

<b>Offset Design</b> NWSE S19-T7S-R95W (PJ-19 Pad) - Daybreak Federal 19-7BB (PJ-19) - DD - Plan #1												<b>Offset Site Error:</b>	0.0 ft
Survey Program: 0-MWD												<b>Offset Well Error:</b>	0.0 ft
Reference		Offset		Semi Major Axis		Distance							
Measured Depth (ft)	Vertical Depth (ft)	Measured Depth (ft)	Vertical Depth (ft)	Reference (ft)	Offset (ft)	Highside Toolface (°)	Offset Wellbore Centre +N/-S (ft)	+E/-W (ft)	Between Centres (ft)	Between Ellipses (ft)	Total Uncertainty Axis	Separation Factor	Warning
0.0	0.0	0.0	0.0	0.0	0.0	-66.74	3.6	-8.5	9.2				
100.0	100.0	100.0	100.0	0.1	0.1	-66.74	3.6	-8.5	9.2	9.0	0.27	33.880	
200.0	200.0	200.0	200.0	0.3	0.3	-66.74	3.6	-8.5	9.2	8.6	0.62	14.846	
300.0	300.0	300.0	300.0	0.5	0.5	-66.74	3.6	-8.5	9.2	8.3	0.97	9.506	
400.0	400.0	400.0	400.0	0.7	0.7	-66.74	3.6	-8.5	9.2	7.9	1.32	6.991	
500.0	500.0	500.0	500.0	0.8	0.8	-66.74	3.6	-8.5	9.2	7.6	1.67	5.529 CC, ES	
600.0	600.0	599.8	599.8	1.0	1.0	-52.06	6.2	-7.9	10.1	8.1	2.02	4.987 SF	
700.0	700.0	699.1	698.7	1.2	1.2	-24.81	13.8	-6.4	15.3	12.9	2.38	6.398	
750.0	750.0	748.3	747.6	1.3	1.3	-15.02	19.4	-5.2	20.3	17.7	2.57	7.892	
800.0	800.0	797.4	796.2	1.4	1.5	-22.72	26.3	-3.8	26.2	23.5	2.72	9.624	
900.0	899.8	895.0	892.2	1.5	1.8	-16.34	43.5	-0.2	38.6	35.5	3.07	12.573	
1,000.0	999.3	991.9	986.5	1.8	2.2	-13.33	65.3	4.3	51.1	47.7	3.41	14.978	
1,051.2	1,050.0	1,041.3	1,034.1	1.9	2.4	-12.38	78.3	6.9	57.5	53.9	3.59	16.029	
1,100.0	1,098.1	1,088.2	1,078.9	2.0	2.6	-11.63	91.6	9.7	64.2	60.4	3.76	17.072	
1,200.0	1,196.9	1,186.6	1,172.5	2.3	3.1	-10.27	121.4	15.8	79.7	75.5	4.11	19.362	
1,300.0	1,295.7	1,285.4	1,266.5	2.5	3.6	-9.36	151.3	22.0	95.2	90.7	4.47	21.305	

# Cathedral Energy Services

## Anticollision Report

<b>Company:</b>	EnCana Oil & Gas (USA) Inc	<b>Local Co-ordinate Reference:</b>	Well Daybreak Federal 19-7C (PJ-19)
<b>Project:</b>	S. Piceance	<b>TVD Reference:</b>	KBE @ 5449.0ft (Original Well Elev)
<b>Reference Site:</b>	NWSE S19-T7S-R95W (PJ-19 Pad)	<b>MD Reference:</b>	KBE @ 5449.0ft (Original Well Elev)
<b>Site Error:</b>	0.0ft	<b>North Reference:</b>	True
<b>Reference Well:</b>	Daybreak Federal 19-7C (PJ-19)	<b>Survey Calculation Method:</b>	Minimum Curvature
<b>Well Error:</b>	0.0ft	<b>Output errors are at</b>	2.00 sigma
<b>Reference Wellbore</b>	DD	<b>Database:</b>	EDM 5000.1 US Multi Users DB
<b>Reference Design:</b>	Plan #2	<b>Offset TVD Reference:</b>	Offset Datum

Offset Design													NWSE S19-T7S-R95W (PJ-19 Pad) - Daybreak Federal 19-8 (PJ-19) - DD - Plan #1		Offset Site Error:		0.0 ft	
Survey Program:		0-MWD														Offset Well Error:		0.0 ft
Reference		Offset		Semi Major Axis			Distance											
Measured Depth	Vertical Depth	Measured Depth	Vertical Depth	Reference	Offset	Highside Toolface	Offset Wellbore Centre		Between Centres	Between Ellipses	Total Uncertainty Axis	Separation Factor	Warning					
(ft)	(ft)	(ft)	(ft)	(ft)	(ft)	(°)	+N/-S (ft)	+E/-W (ft)		(ft)								
0.0	0.0	0.0	0.0	0.0	0.0	61.08	21.9	39.6	45.2									
100.0	100.0	100.0	100.0	0.1	0.1	61.08	21.9	39.6	45.2	44.9	0.27	165.960						
200.0	200.0	200.0	200.0	0.3	0.3	61.08	21.9	39.6	45.2	44.6	0.62	72.724	CC, ES					
300.0	300.0	297.7	297.6	0.5	0.5	60.30	23.6	41.3	47.7	46.7	0.97	49.316						
400.0	400.0	394.9	394.5	0.7	0.7	58.38	28.8	46.7	55.1	53.8	1.31	42.040						
500.0	500.0	491.0	489.9	0.8	1.0	56.14	37.2	55.5	67.6	65.9	1.65	40.839	SF					
600.0	600.0	585.7	583.1	1.0	1.3	54.12	48.8	67.5	85.0	83.0	2.00	42.539						

# Cathedral Energy Services

## Anticollision Report

<b>Company:</b>	EnCana Oil & Gas (USA) Inc	<b>Local Co-ordinate Reference:</b>	Well Daybreak Federal 19-7C (PJ-19)
<b>Project:</b>	S. Piceance	<b>TVD Reference:</b>	KBE @ 5449.0ft (Original Well Elev)
<b>Reference Site:</b>	NWSE S19-T7S-R95W (PJ-19 Pad)	<b>MD Reference:</b>	KBE @ 5449.0ft (Original Well Elev)
<b>Site Error:</b>	0.0ft	<b>North Reference:</b>	True
<b>Reference Well:</b>	Daybreak Federal 19-7C (PJ-19)	<b>Survey Calculation Method:</b>	Minimum Curvature
<b>Well Error:</b>	0.0ft	<b>Output errors are at</b>	2.00 sigma
<b>Reference Wellbore</b>	DD	<b>Database:</b>	EDM 5000.1 US Multi Users DB
<b>Reference Design:</b>	Plan #2	<b>Offset TVD Reference:</b>	Offset Datum

Offset Design													NWSE S19-T7S-R95W (PJ-19 Pad) - Daybreak Federal 19-8BB (PJ-19) - DD - Plan #1		Offset Site Error:		0.0 ft	
Survey Program:		0-MWD														Offset Well Error:		0.0 ft
Reference		Offset		Semi Major Axis			Distance											
Measured Depth	Vertical Depth	Measured Depth	Vertical Depth	Reference	Offset	Highside Toolface	Offset Wellbore Centre		Between Centres	Between Ellipses	Total Uncertainty	Separation	Warning					
(ft)	(ft)	(ft)	(ft)	(ft)	(ft)	(°)	+N/-S (ft)	+E/-W (ft)	(ft)	(ft)	Axis	Factor						
0.0	0.0	0.0	0.0	0.0	0.0	73.12	14.6	48.0	50.2									
100.0	100.0	100.0	100.0	0.1	0.1	73.12	14.6	48.0	50.2	49.9	0.27	184.325						
200.0	200.0	200.0	200.0	0.3	0.3	73.12	14.6	48.0	50.2	49.6	0.62	80.772	CC, ES					
300.0	300.0	297.4	297.4	0.5	0.5	72.59	15.7	50.2	52.7	51.7	0.97	54.546						
400.0	400.0	394.3	394.0	0.7	0.7	71.27	19.2	56.7	60.2	58.9	1.31	45.951						
500.0	500.0	490.2	489.1	0.8	1.0	69.68	25.0	67.4	72.7	71.1	1.65	43.965	SF					
600.0	600.0	584.7	582.1	1.0	1.3	68.21	32.8	82.1	90.2	88.2	2.00	45.122						

# Cathedral Energy Services

## Anticollision Report

<b>Company:</b>	EnCana Oil & Gas (USA) Inc	<b>Local Co-ordinate Reference:</b>	Well Daybreak Federal 19-7C (PJ-19)
<b>Project:</b>	S. Piceance	<b>TVD Reference:</b>	KBE @ 5449.0ft (Original Well Elev)
<b>Reference Site:</b>	NWSE S19-T7S-R95W (PJ-19 Pad)	<b>MD Reference:</b>	KBE @ 5449.0ft (Original Well Elev)
<b>Site Error:</b>	0.0ft	<b>North Reference:</b>	True
<b>Reference Well:</b>	Daybreak Federal 19-7C (PJ-19)	<b>Survey Calculation Method:</b>	Minimum Curvature
<b>Well Error:</b>	0.0ft	<b>Output errors are at</b>	2.00 sigma
<b>Reference Wellbore</b>	DD	<b>Database:</b>	EDM 5000.1 US Multi Users DB
<b>Reference Design:</b>	Plan #2	<b>Offset TVD Reference:</b>	Offset Datum

<b>Offset Design</b> NWSE S19-T7S-R95W (PJ-19 Pad) - Daybreak Federal 19-8C (PJ-19 Pad) - DD - Plan #2												<b>Offset Site Error:</b>	0.0 ft
Survey Program: 0-MWD												<b>Offset Well Error:</b>	0.0 ft
Reference		Offset		Semi Major Axis			Distance						Warning
Measured Depth (ft)	Vertical Depth (ft)	Measured Depth (ft)	Vertical Depth (ft)	Reference (ft)	Offset (ft)	Highside Toolface (°)	Offset Wellbore Centre +N/-S (ft)	+E/-W (ft)	Between Centres (ft)	Between Ellipses (ft)	Total Uncertainty Axis	Separation Factor	
0.0	0.0	0.0	0.0	0.0	0.0	77.87	3.6	17.0	17.3				
100.0	100.0	100.0	100.0	0.1	0.1	77.87	3.6	17.0	17.3	17.1	0.27	63.675	
200.0	200.0	200.0	200.0	0.3	0.3	77.87	3.6	17.0	17.3	16.7	0.62	27.903 CC, ES	
300.0	300.0	299.2	299.2	0.5	0.5	73.21	5.6	18.6	19.5	18.5	0.97	20.055	
400.0	400.0	397.9	397.5	0.7	0.7	63.98	11.5	23.5	26.3	25.0	1.32	19.963 SF	
500.0	500.0	495.5	494.3	0.8	1.0	56.26	21.1	31.6	38.4	36.8	1.66	23.139	
600.0	600.0	591.6	588.8	1.0	1.3	51.21	34.3	42.7	55.9	53.9	2.00	27.868	
700.0	700.0	685.7	680.5	1.2	1.7	48.07	50.7	56.4	78.3	76.0	2.35	33.333	
750.0	750.0	731.9	725.0	1.3	2.0	46.95	60.0	64.3	91.4	88.9	2.53	36.192	

# Cathedral Energy Services

## Anticollision Report

<b>Company:</b>	EnCana Oil & Gas (USA) Inc	<b>Local Co-ordinate Reference:</b>	Well Daybreak Federal 19-7C (PJ-19)
<b>Project:</b>	S. Piceance	<b>TVD Reference:</b>	KBE @ 5449.0ft (Original Well Elev)
<b>Reference Site:</b>	NWSE S19-T7S-R95W (PJ-19 Pad)	<b>MD Reference:</b>	KBE @ 5449.0ft (Original Well Elev)
<b>Site Error:</b>	0.0ft	<b>North Reference:</b>	True
<b>Reference Well:</b>	Daybreak Federal 19-7C (PJ-19)	<b>Survey Calculation Method:</b>	Minimum Curvature
<b>Well Error:</b>	0.0ft	<b>Output errors are at</b>	2.00 sigma
<b>Reference Wellbore</b>	DD	<b>Database:</b>	EDM 5000.1 US Multi Users DB
<b>Reference Design:</b>	Plan #2	<b>Offset TVD Reference:</b>	Offset Datum

Offset Design NWSE S19-T7S-R95W (PJ-19 Pad) - Daybreak Federal 19-8D (PJ-19) - DD - Plan #1												Offset Site Error: 0.0 ft			
Survey Program: 0-MWD														Offset Well Error: 0.0 ft	
Reference		Offset		Semi Major Axis			Distance							Warning	
Measured Depth (ft)	Vertical Depth (ft)	Measured Depth (ft)	Vertical Depth (ft)	Reference (ft)	Offset (ft)	Highside Toolface (°)	Offset Wellbore Centre +N/-S (ft)	+E/-W (ft)	Between Centres (ft)	Between Ellipses (ft)	Total Uncertainty Axis	Separation Factor			
0.0	0.0	0.0	0.0	0.0	0.0	72.13	10.9	33.9	35.6						
100.0	100.0	100.0	100.0	0.1	0.1	72.13	10.9	33.9	35.6	35.3	0.27	130.816			
200.0	200.0	200.0	200.0	0.3	0.3	72.13	10.9	33.9	35.6	35.0	0.62	57.324 CC, ES			
300.0	300.0	298.2	298.1	0.5	0.5	70.90	12.4	35.9	38.1	37.1	0.97	39.344			
400.0	400.0	395.8	395.5	0.7	0.7	68.01	16.9	41.9	45.4	44.1	1.31	34.627 SF			
500.0	500.0	492.5	491.3	0.8	1.0	64.86	24.3	51.8	57.9	56.2	1.66	34.942			
600.0	600.0	587.7	585.0	1.0	1.3	62.21	34.4	65.3	75.3	73.3	2.00	37.663			
700.0	700.0	680.9	675.8	1.2	1.7	60.22	47.0	82.1	97.7	95.3	2.34	41.650			

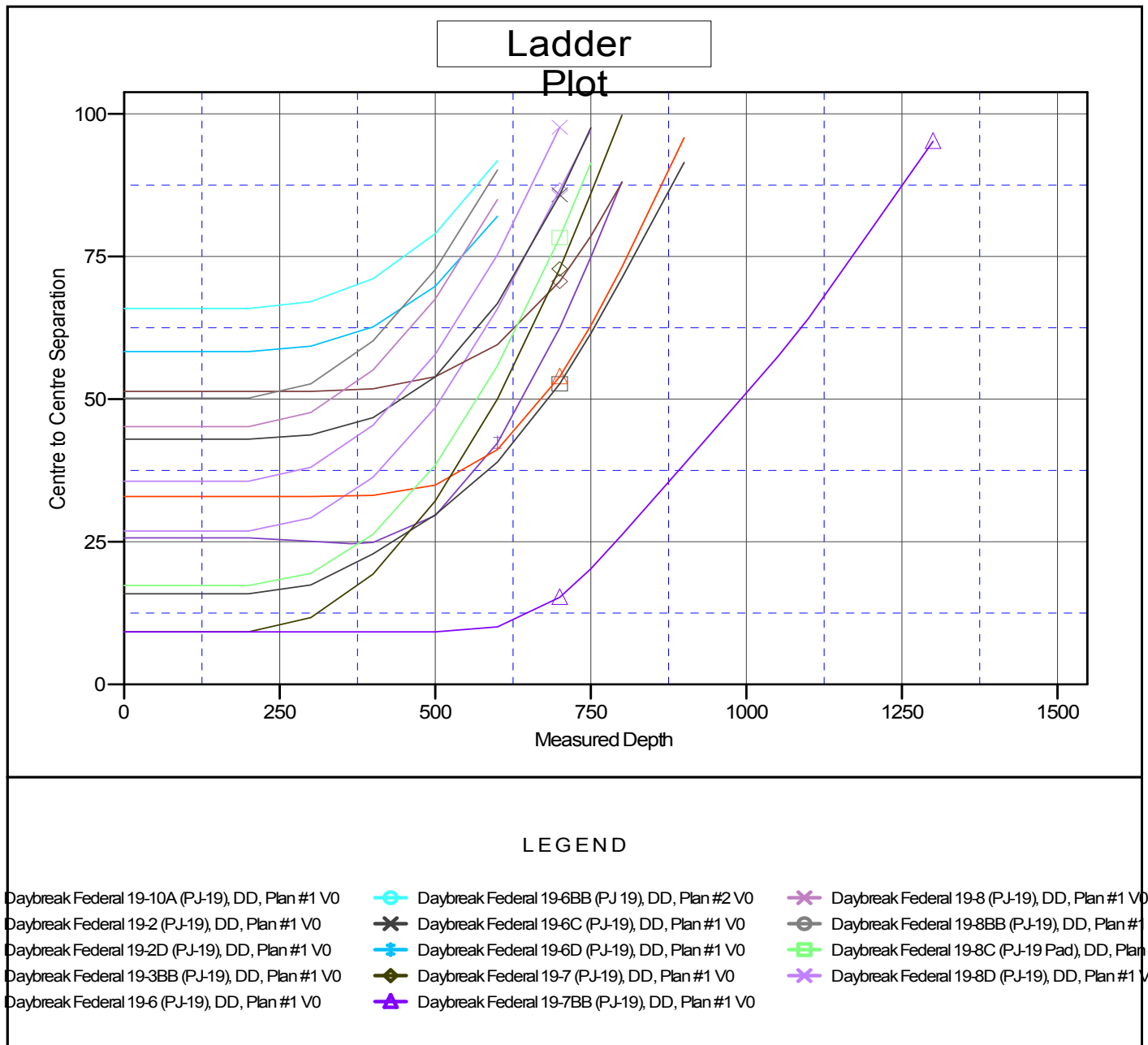
# Cathedral Energy Services

## Anticollision Report

<b>Company:</b>	EnCana Oil & Gas (USA) Inc	<b>Local Co-ordinate Reference:</b>	Well Daybreak Federal 19-7C (PJ-19)
<b>Project:</b>	S. Piceance	<b>TVD Reference:</b>	KBE @ 5449.0ft (Original Well Elev)
<b>Reference Site:</b>	NWSE S19-T7S-R95W (PJ-19 Pad)	<b>MD Reference:</b>	KBE @ 5449.0ft (Original Well Elev)
<b>Site Error:</b>	0.0ft	<b>North Reference:</b>	True
<b>Reference Well:</b>	Daybreak Federal 19-7C (PJ-19)	<b>Survey Calculation Method:</b>	Minimum Curvature
<b>Well Error:</b>	0.0ft	<b>Output errors are at</b>	2.00 sigma
<b>Reference Wellbore</b>	DD	<b>Database:</b>	EDM 5000.1 US Multi Users DB
<b>Reference Design:</b>	Plan #2	<b>Offset TVD Reference:</b>	Offset Datum

Reference Depths are relative to KBE @ 5449.0ft (Original Well Elev)  
 Offset Depths are relative to Offset Datum  
 Central Meridian is -105.500000 °

Coordinates are relative to: Daybreak Federal 19-7C (PJ-19)  
 Coordinate System is US State Plane 1983, Colorado Central Zone  
 Grid Convergence at Surface is: -1.60°



CC - Min centre to center distance or convergent point, SF - min separation factor, ES - min ellipse separation