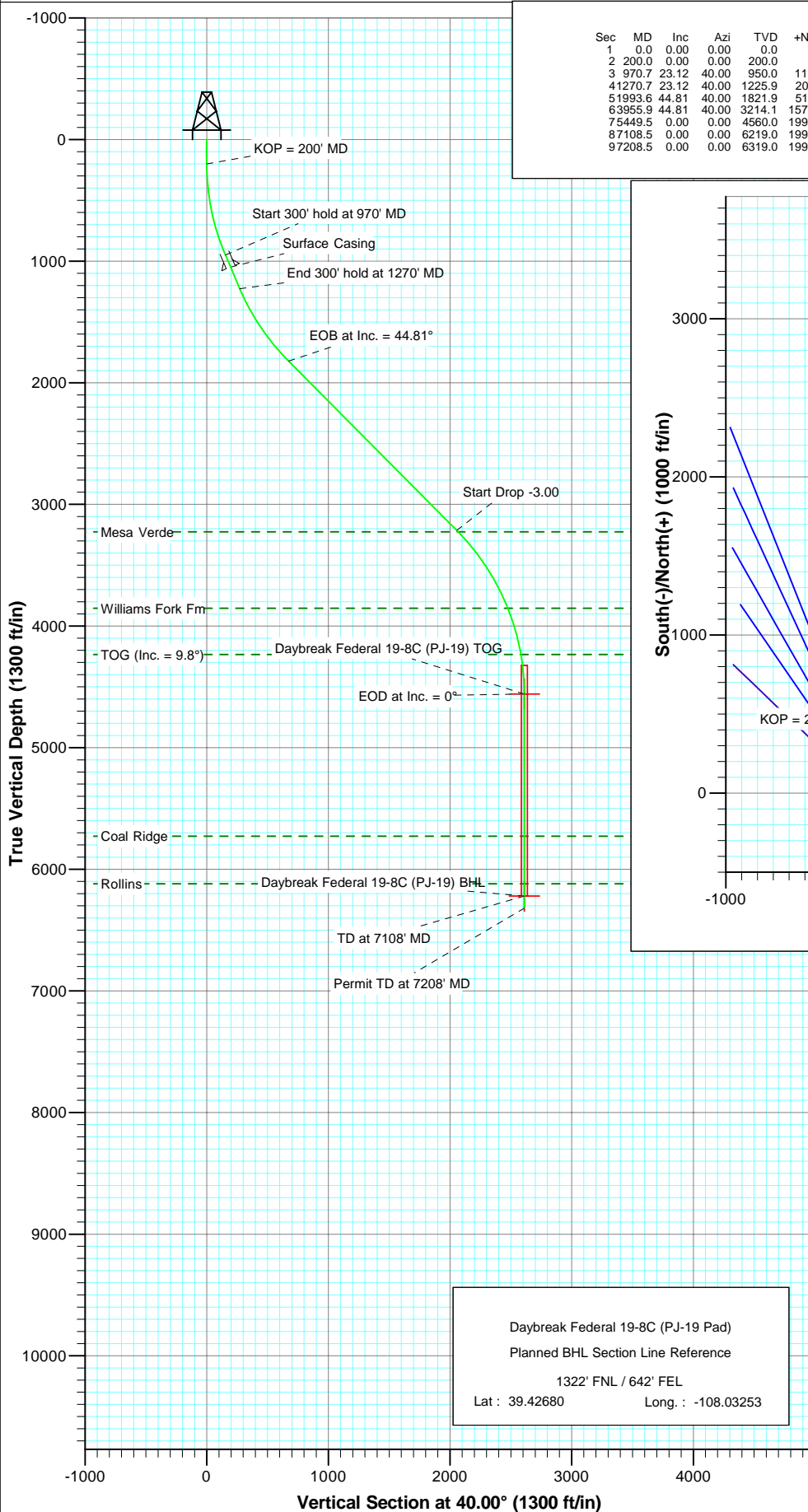
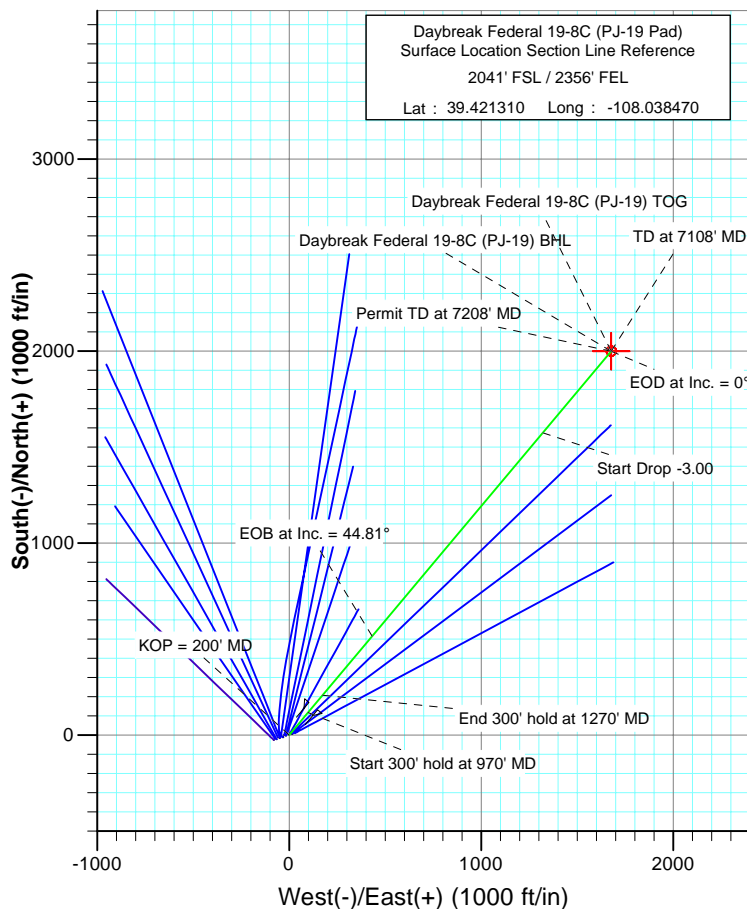




Project: S. Piceance
Site: NWSE S19-T7S-R95W (PJ-19 Pad)
Well: Daybreak Federal 19-8C (PJ-19 Pad)
Wellbore: DD
Plan: Plan #2



SECTION DETAILS										
Sec	MD	Inc	Azi	TVD	+N/-S	+E/-W	Dleg	TFace	VSECT	Target
1	0.0	0.00	0.00	0.0	0.0	0.0	0.00	0.00	0.0	
2	200.0	0.00	0.00	200.0	0.0	0.0	0.00	0.00	0.0	
3	970.7	23.12	40.00	950.0	117.5	98.6	3.00	40.00	153.4	
4	4127.0	23.12	40.00	1225.9	207.7	174.3	0.00	0.00	271.2	
5	51993.6	44.81	40.00	1821.9	515.3	432.4	3.00	0.00	672.7	
6	63955.9	44.81	40.00	3214.1	1574.7	1321.3	0.00	0.00	2055.5	
7	75449.5	0.00	0.00	4560.0	1999.7	1677.9	3.00	180.00	2610.4	Daybreak Federal 19-8C (PJ-19) TOG
8	87108.5	0.00	0.00	6219.0	1999.7	1677.9	0.00	0.00	2610.4	Daybreak Federal 19-8C (PJ-19) BHL
9	97208.5	0.00	0.00	6319.0	1999.7	1677.9	0.00	0.00	2610.4	



FORMATION TOP DETAILS		
TVDPath	MDPath	Formation
3225.0	3971.3	Mesa Verde
3854.0	4726.3	Williams Fork Fm
4235.0	5122.9	TOG (Inc. = 9.8°)
5728.0	6617.5	Coal Ridge
6119.0	7008.5	Rollins



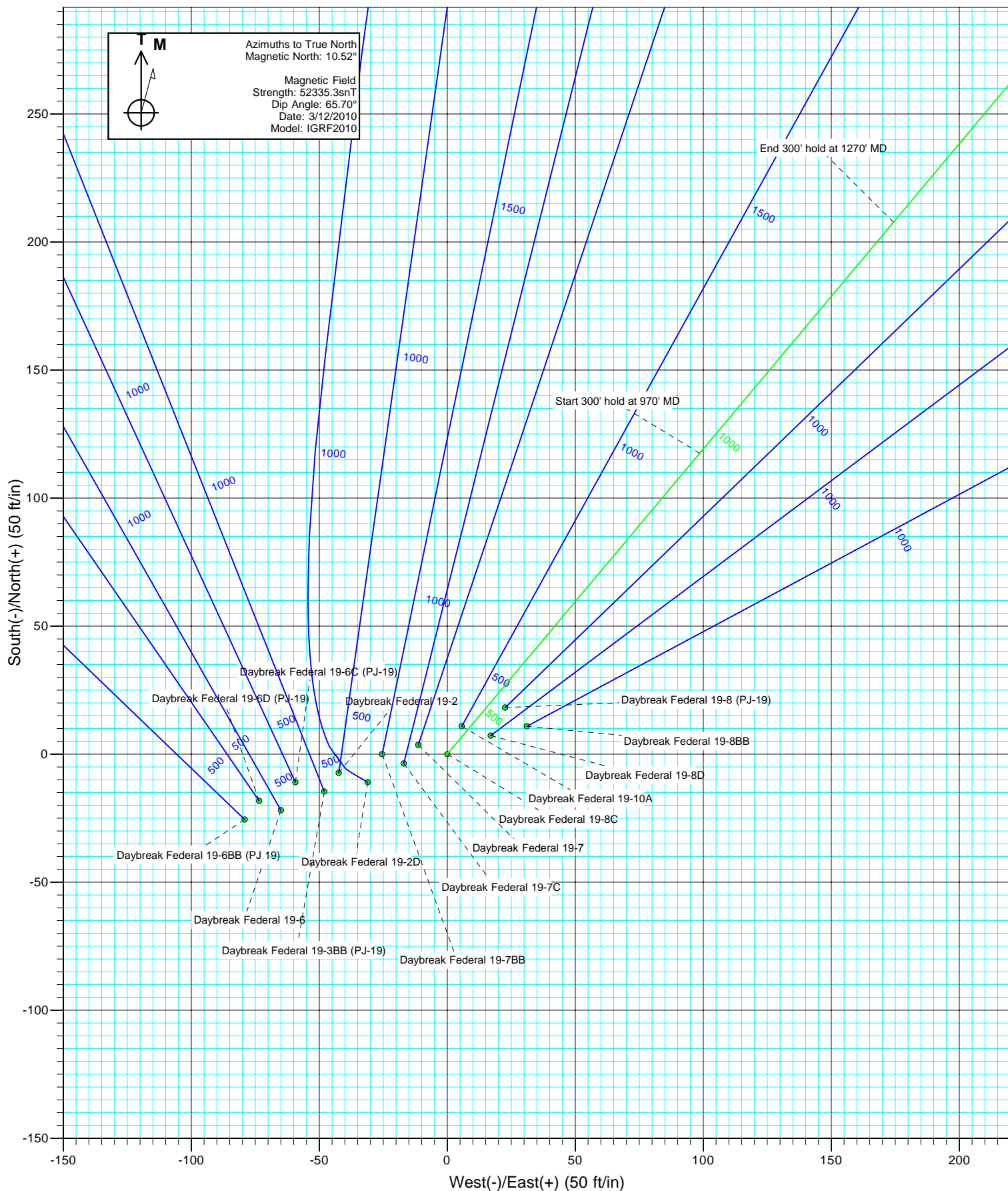
Azimuths to True North
Magnetic North: 10.52°

Magnetic Field
Strength: 52335.3snT
Dip Angle: 65.70°
Date: 3/12/2010
Model: IGRF2010

DESIGN DETAILS: Plan #2				
Job# 105XXX				
KBE @ 5449.0ft (Original Well Elev)				
Target	Azimuth	Origin Type	N/S	E/W
Daybreak Federal 19-8C (PJ-19) BHL	0.00	Slot	0.0	0.0

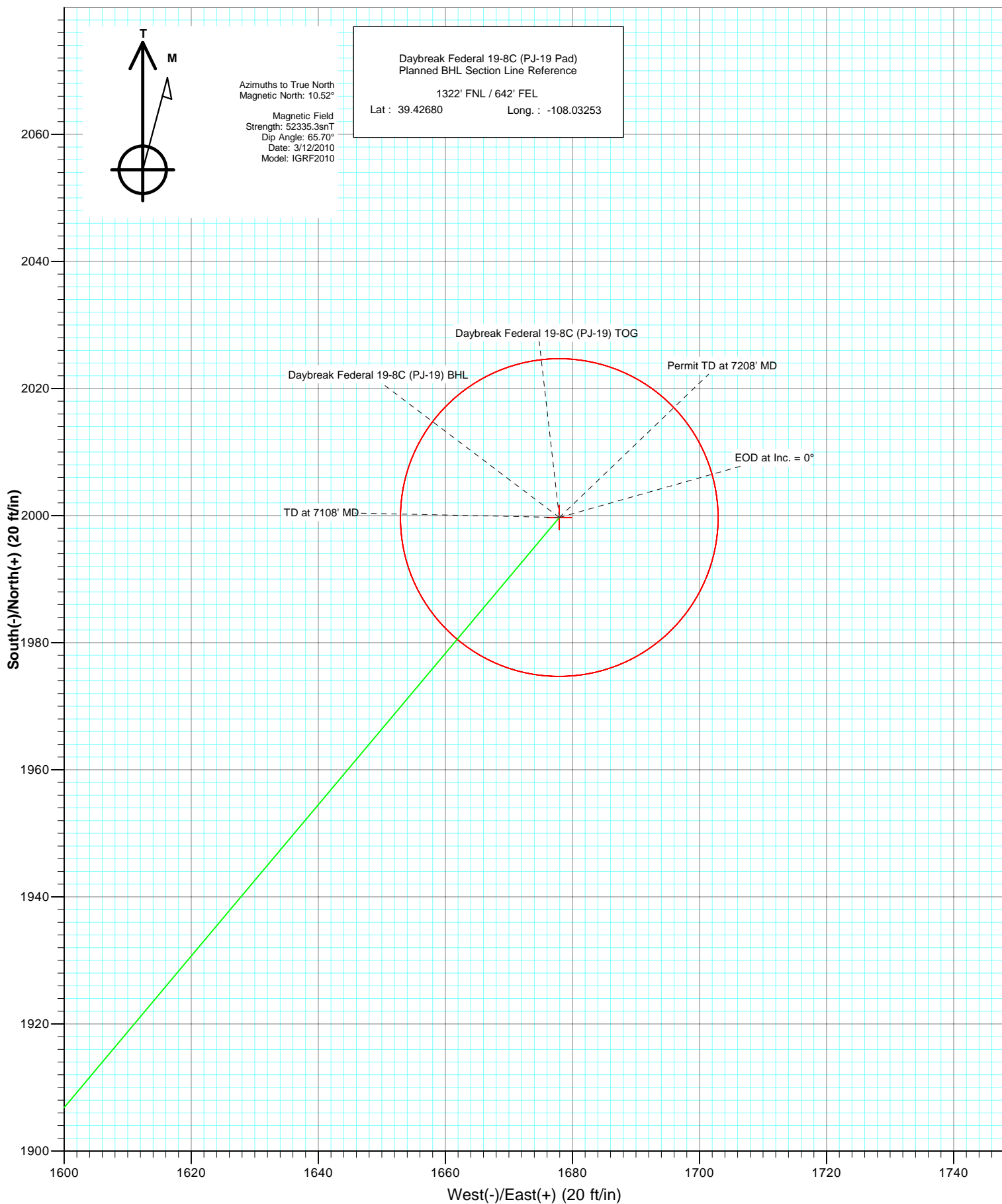


Project: S. Piceance
Site: NWSE S19-T7S-R95W (PJ-19 Pad)
Well: Daybreak Federal 19-8C (PJ-19 Pad)
Wellbore: DD
Design: Plan #2





Project: S. Piceance
Site: NWSE S19-T7S-R95W (PJ-19 Pad)
Well: Daybreak Federal 19-8C (PJ-19 Pad)
Wellbore: DD
Plan: Plan #2



Cathedral Energy Services

Planning Report

Database:	EDM 5000.1 US Multi Users DB	Local Co-ordinate Reference:	Well Daybreak Federal 19-8C (PJ-19 Pad)
Company:	EnCana Oil & Gas (USA) Inc	TVD Reference:	KBE @ 5449.0ft (Original Well Elev)
Project:	S. Piceance	MD Reference:	KBE @ 5449.0ft (Original Well Elev)
Site:	NWSE S19-T7S-R95W (PJ-19 Pad)	North Reference:	True
Well:	Daybreak Federal 19-8C (PJ-19 Pad)	Survey Calculation Method:	Minimum Curvature
Wellbore:	DD		
Design:	Plan #2		

Planned Survey

Measured Depth (ft)	Inclination (°)	Azimuth (°)	Vertical Depth (ft)	+N/-S (ft)	+E/-W (ft)	Vertical Section (ft)	Dogleg Rate (°/100ft)	Build Rate (°/100ft)	Comments / Formations
4,600.0	25.49	40.00	3,738.2	1,857.3	1,558.5	2,424.6	3.00	-3.00	
4,700.0	22.49	40.00	3,829.6	1,888.5	1,584.6	2,465.2	3.00	-3.00	
4,726.3	21.69	40.00	3,854.0	1,896.1	1,591.0	2,475.1	3.00	-3.00	Williams Fork Fm
4,800.0	19.49	40.00	3,922.9	1,915.9	1,607.6	2,501.0	3.00	-3.00	
4,900.0	16.49	40.00	4,018.0	1,939.6	1,627.5	2,531.9	3.00	-3.00	
5,000.0	13.49	40.00	4,114.6	1,959.4	1,644.1	2,557.8	3.00	-3.00	
5,100.0	10.49	40.00	4,212.4	1,975.3	1,657.4	2,578.5	3.00	-3.00	
5,122.9	9.80	40.00	4,235.0	1,978.4	1,660.0	2,582.6	3.00	-3.00	TOG (Inc. = 9.8°)
5,200.0	7.49	40.00	4,311.2	1,987.2	1,667.5	2,594.1	3.00	-3.00	
5,300.0	4.49	40.00	4,410.7	1,995.2	1,674.2	2,604.6	3.00	-3.00	
5,400.0	1.49	40.00	4,510.5	1,999.2	1,677.5	2,609.8	3.00	-3.00	
5,449.5	0.00	0.00	4,560.0	1,999.7	1,677.9	2,610.4	3.00	-3.00	EOD at Inc. = 0° - Daybreak Federal 19-8C (PJ-
5,500.0	0.00	0.00	4,610.5	1,999.7	1,677.9	2,610.4	0.00	0.00	
5,600.0	0.00	0.00	4,710.5	1,999.7	1,677.9	2,610.4	0.00	0.00	
5,700.0	0.00	0.00	4,810.5	1,999.7	1,677.9	2,610.4	0.00	0.00	
5,800.0	0.00	0.00	4,910.5	1,999.7	1,677.9	2,610.4	0.00	0.00	
5,900.0	0.00	0.00	5,010.5	1,999.7	1,677.9	2,610.4	0.00	0.00	
6,000.0	0.00	0.00	5,110.5	1,999.7	1,677.9	2,610.4	0.00	0.00	
6,100.0	0.00	0.00	5,210.5	1,999.7	1,677.9	2,610.4	0.00	0.00	
6,200.0	0.00	0.00	5,310.5	1,999.7	1,677.9	2,610.4	0.00	0.00	
6,300.0	0.00	0.00	5,410.5	1,999.7	1,677.9	2,610.4	0.00	0.00	
6,400.0	0.00	0.00	5,510.5	1,999.7	1,677.9	2,610.4	0.00	0.00	
6,500.0	0.00	0.00	5,610.5	1,999.7	1,677.9	2,610.4	0.00	0.00	
6,600.0	0.00	0.00	5,710.5	1,999.7	1,677.9	2,610.4	0.00	0.00	
6,617.5	0.00	0.00	5,728.0	1,999.7	1,677.9	2,610.4	0.00	0.00	Coal Ridge
6,700.0	0.00	0.00	5,810.5	1,999.7	1,677.9	2,610.4	0.00	0.00	
6,800.0	0.00	0.00	5,910.5	1,999.7	1,677.9	2,610.4	0.00	0.00	
6,900.0	0.00	0.00	6,010.5	1,999.7	1,677.9	2,610.4	0.00	0.00	
7,000.0	0.00	0.00	6,110.5	1,999.7	1,677.9	2,610.4	0.00	0.00	
7,008.5	0.00	0.00	6,119.0	1,999.7	1,677.9	2,610.4	0.00	0.00	Rollins
7,100.0	0.00	0.00	6,210.5	1,999.7	1,677.9	2,610.4	0.00	0.00	
7,108.5	0.00	0.00	6,219.0	1,999.7	1,677.9	2,610.4	0.00	0.00	TD at 7108' MD - Daybreak Federal 19-8C (PJ-
7,200.0	0.00	0.00	6,310.5	1,999.7	1,677.9	2,610.4	0.00	0.00	
7,208.5	0.00	0.00	6,319.0	1,999.7	1,677.9	2,610.4	0.00	0.00	Permit TD at 7208' MD

Targets

Target Name	Dip Angle (°)	Dip Dir. (°)	TVD (ft)	+N/-S (ft)	+E/-W (ft)	Northing (ft)	Easting (ft)	Latitude	Longitude
- hit/miss target									
- Shape									
Daybreak Federal 19-8C	0.00	0.00	4,560.0	1,999.7	1,677.9	1,590,315.65	2,284,713.42	39.426800	-108.032530
- plan hits target center									
- Point									
Daybreak Federal 19-8C	0.00	0.00	6,219.0	1,999.7	1,677.9	1,590,315.65	2,284,713.42	39.426800	-108.032530
- plan hits target center									
- Circle (radius 25.0)									

Cathedral Energy Services

Planning Report

Database:	EDM 5000.1 US Multi Users DB	Local Co-ordinate Reference:	Well Daybreak Federal 19-8C (PJ-19 Pad)
Company:	EnCana Oil & Gas (USA) Inc	TVD Reference:	KBE @ 5449.0ft (Original Well Elev)
Project:	S. Piceance	MD Reference:	KBE @ 5449.0ft (Original Well Elev)
Site:	NWSE S19-T7S-R95W (PJ-19 Pad)	North Reference:	True
Well:	Daybreak Federal 19-8C (PJ-19 Pad)	Survey Calculation Method:	Minimum Curvature
Wellbore:	DD		
Design:	Plan #2		

Project	S. Piceance, Garfield County, CO		
Map System:	US State Plane 1983	System Datum:	Mean Sea Level
Geo Datum:	North American Datum 1983		
Map Zone:	Colorado Central Zone		

Site		NWSE S19-T7S-R95W (PJ-19 Pad)			
Site Position:		Northing:	1,588,373.67 ft	Latitude:	39.421340
From:	Lat/Long	Easting:	2,283,011.65 ft	Longitude:	-108.038360
Position Uncertainty:	0.0 ft	Slot Radius:	13.200 in	Grid Convergence:	-1.60 °

Well	Daybreak Federal 19-8C (PJ-19 Pad)					
Well Position	+N/-S	0.0 ft	Northing:	1,588,363.60 ft	Latitude:	39.421310
	+E/-W	0.0 ft	Easting:	2,282,980.28 ft	Longitude:	-108.038470
Position Uncertainty		0.0 ft	Wellhead Elevation:	ft	Ground Level:	5,427.0 ft

Wellbore	DD				
Magnetics	Model Name	Sample Date	Declination	Dip Angle	Field Strength
			(°)	(°)	(nT)
	IGRF2010	3/12/2010	10.52	65.70	52,335

Design	Plan #2			
Audit Notes:				
Version:	Phase:	PLAN	Tie On Depth:	0.0
Vertical Section:	Depth From (TVD)	+N/-S	+E/-W	Direction
	(ft)	(ft)	(ft)	(°)
	0.0	0.0	0.0	40.00

Plan Sections										
Measured Depth (ft)	Inclination (°)	Azimuth (°)	Vertical Depth (ft)	+N/-S (ft)	+E/-W (ft)	Dogleg Rate (°/100ft)	Build Rate (°/100ft)	Turn Rate (°/100ft)	TFO (°)	Target
0.0	0.00	0.00	0.0	0.0	0.0	0.00	0.00	0.00	0.00	
200.0	0.00	0.00	200.0	0.0	0.0	0.00	0.00	0.00	0.00	
970.7	23.12	40.00	950.0	117.5	98.6	3.00	3.00	0.00	40.00	
1,270.7	23.12	40.00	1,225.9	207.7	174.3	0.00	0.00	0.00	0.00	
1,993.6	44.81	40.00	1,821.9	515.3	432.4	3.00	3.00	0.00	0.00	
3,955.9	44.81	40.00	3,214.1	1,574.7	1,321.3	0.00	0.00	0.00	0.00	
5,449.5	0.00	0.00	4,560.0	1,999.7	1,677.9	3.00	-3.00	0.00	180.00	Daybreak Federal 19-
7,108.5	0.00	0.00	6,219.0	1,999.7	1,677.9	0.00	0.00	0.00	0.00	Daybreak Federal 19-
7,208.5	0.00	0.00	6,319.0	1,999.7	1,677.9	0.00	0.00	0.00	0.00	

Cathedral Energy Services

Planning Report

Database:	EDM 5000.1 US Multi Users DB	Local Co-ordinate Reference:	Well Daybreak Federal 19-8C (PJ-19 Pad)
Company:	EnCana Oil & Gas (USA) Inc	TVD Reference:	KBE @ 5449.0ft (Original Well Elev)
Project:	S. Piceance	MD Reference:	KBE @ 5449.0ft (Original Well Elev)
Site:	NWSE S19-T7S-R95W (PJ-19 Pad)	North Reference:	True
Well:	Daybreak Federal 19-8C (PJ-19 Pad)	Survey Calculation Method:	Minimum Curvature
Wellbore:	DD		
Design:	Plan #2		

Planned Survey

Measured Depth (ft)	Inclination (°)	Azimuth (°)	Vertical Depth (ft)	+N/-S (ft)	+E/-W (ft)	Vertical Section (ft)	Dogleg Rate (°/100ft)	Build Rate (°/100ft)	Comments / Formations
0.0	0.00	0.00	0.0	0.0	0.0	0.0	0.00	0.00	
100.0	0.00	0.00	100.0	0.0	0.0	0.0	0.00	0.00	
200.0	0.00	0.00	200.0	0.0	0.0	0.0	0.00	0.00	KOP = 200' MD
300.0	3.00	40.00	300.0	2.0	1.7	2.6	3.00	3.00	
400.0	6.00	40.00	399.6	8.0	6.7	10.5	3.00	3.00	
500.0	9.00	40.00	498.8	18.0	15.1	23.5	3.00	3.00	
600.0	12.00	40.00	597.1	32.0	26.8	41.7	3.00	3.00	
700.0	15.00	40.00	694.3	49.8	41.8	65.1	3.00	3.00	
800.0	18.00	40.00	790.2	71.6	60.1	93.5	3.00	3.00	
900.0	21.00	40.00	884.4	97.2	81.5	126.8	3.00	3.00	
970.7	23.12	40.00	950.0	117.5	98.6	153.4	3.00	3.00	Start 300' hold at 970' MD
1,000.0	23.12	40.00	976.9	126.3	106.0	164.9	0.00	0.00	
1,079.5	23.12	40.00	1,050.0	150.2	126.1	196.1	0.00	0.00	Surface Casing
1,100.0	23.12	40.00	1,068.9	156.4	131.2	204.2	0.00	0.00	
1,200.0	23.12	40.00	1,160.8	186.5	156.5	243.4	0.00	0.00	
1,270.7	23.12	40.00	1,225.9	207.7	174.3	271.2	0.00	0.00	End 300' hold at 1270' MD
1,300.0	24.00	40.00	1,252.7	216.7	181.8	282.9	3.00	3.00	
1,400.0	27.00	40.00	1,343.0	249.7	209.5	326.0	3.00	3.00	
1,500.0	30.00	40.00	1,430.8	286.2	240.2	373.7	3.00	3.00	
1,600.0	33.00	40.00	1,516.1	326.3	273.8	425.9	3.00	3.00	
1,700.0	36.00	40.00	1,598.5	369.6	310.2	482.5	3.00	3.00	
1,800.0	39.00	40.00	1,677.8	416.3	349.3	543.4	3.00	3.00	
1,900.0	42.00	40.00	1,753.9	466.0	391.0	608.3	3.00	3.00	
1,993.6	44.81	40.00	1,821.9	515.3	432.4	672.7	3.00	3.00	EOB at Inc. = 44.81°
2,000.0	44.81	40.00	1,826.4	518.7	435.3	677.2	0.00	0.00	
2,100.0	44.81	40.00	1,897.3	572.7	480.6	747.6	0.00	0.00	
2,200.0	44.81	40.00	1,968.3	626.7	525.9	818.1	0.00	0.00	
2,300.0	44.81	40.00	2,039.2	680.7	571.2	888.6	0.00	0.00	
2,400.0	44.81	40.00	2,110.2	734.7	616.5	959.1	0.00	0.00	
2,500.0	44.81	40.00	2,181.1	788.7	661.8	1,029.5	0.00	0.00	
2,600.0	44.81	40.00	2,252.1	842.7	707.1	1,100.0	0.00	0.00	
2,700.0	44.81	40.00	2,323.0	896.6	752.4	1,170.5	0.00	0.00	
2,800.0	44.81	40.00	2,394.0	950.6	797.7	1,240.9	0.00	0.00	
2,900.0	44.81	40.00	2,464.9	1,004.6	843.0	1,311.4	0.00	0.00	
3,000.0	44.81	40.00	2,535.9	1,058.6	888.3	1,381.9	0.00	0.00	
3,100.0	44.81	40.00	2,606.8	1,112.6	933.6	1,452.4	0.00	0.00	
3,200.0	44.81	40.00	2,677.8	1,166.6	978.9	1,522.8	0.00	0.00	
3,300.0	44.81	40.00	2,748.7	1,220.6	1,024.1	1,593.3	0.00	0.00	
3,400.0	44.81	40.00	2,819.7	1,274.5	1,069.4	1,663.8	0.00	0.00	
3,500.0	44.81	40.00	2,890.6	1,328.5	1,114.7	1,734.3	0.00	0.00	
3,600.0	44.81	40.00	2,961.6	1,382.5	1,160.0	1,804.7	0.00	0.00	
3,700.0	44.81	40.00	3,032.5	1,436.5	1,205.3	1,875.2	0.00	0.00	
3,800.0	44.81	40.00	3,103.5	1,490.5	1,250.6	1,945.7	0.00	0.00	
3,900.0	44.81	40.00	3,174.4	1,544.5	1,295.9	2,016.1	0.00	0.00	
3,955.9	44.81	40.00	3,214.1	1,574.7	1,321.3	2,055.5	0.00	0.00	Start Drop -3.00
3,971.3	44.35	40.00	3,225.0	1,582.9	1,328.2	2,066.3	3.00	-3.00	Mesa Verde
4,000.0	43.49	40.00	3,245.7	1,598.2	1,341.0	2,086.3	3.00	-3.00	
4,100.0	40.49	40.00	3,320.0	1,649.4	1,384.0	2,153.1	3.00	-3.00	
4,200.0	37.49	40.00	3,397.7	1,697.6	1,424.4	2,216.0	3.00	-3.00	
4,300.0	34.49	40.00	3,478.7	1,742.6	1,462.2	2,274.8	3.00	-3.00	
4,400.0	31.49	40.00	3,562.5	1,784.3	1,497.2	2,329.2	3.00	-3.00	
4,500.0	28.49	40.00	3,649.1	1,822.6	1,529.3	2,379.2	3.00	-3.00	

Cathedral Energy Services

Planning Report

Database:	EDM 5000.1 US Multi Users DB	Local Co-ordinate Reference:	Well Daybreak Federal 19-8C (PJ-19 Pad)
Company:	EnCana Oil & Gas (USA) Inc	TVD Reference:	KBE @ 5449.0ft (Original Well Elev)
Project:	S. Piceance	MD Reference:	KBE @ 5449.0ft (Original Well Elev)
Site:	NWSE S19-T7S-R95W (PJ-19 Pad)	North Reference:	True
Well:	Daybreak Federal 19-8C (PJ-19 Pad)	Survey Calculation Method:	Minimum Curvature
Wellbore:	DD		
Design:	Plan #2		

Casing Points

Measured Depth (ft)	Vertical Depth (ft)	Name	Casing Diameter (in)	Hole Diameter (in)
1,079.5	1,050.0	Surface Casing	5.500	6.000

Formations

Measured Depth (ft)	Vertical Depth (ft)	Name	Lithology	Dip (°)	Dip Direction (°)
3,971.3	3,225.0	Mesa Verde		0.00	
4,726.3	3,854.0	Williams Fork Fm		0.00	
5,122.9	4,235.0	TOG (Inc. = 9.8°)		0.00	
6,617.5	5,728.0	Coal Ridge		0.00	
7,008.5	6,119.0	Rollins		0.00	

Plan Annotations

Measured Depth (ft)	Vertical Depth (ft)	Local Coordinates		Comment
		+N/-S (ft)	+E/-W (ft)	
200.0	200.0	0.0	0.0	KOP = 200' MD
970.7	950.0	117.5	98.6	Start 300' hold at 970' MD
1,270.7	1,225.9	207.7	174.3	End 300' hold at 1270' MD
1,993.6	1,821.9	515.3	432.4	EOB at Inc. = 44.81°
3,955.9	3,214.1	1,574.7	1,321.3	Start Drop -3.00
5,449.5	4,560.0	1,999.7	1,677.9	EOD at Inc. = 0°
7,108.5	6,219.0	1,999.7	1,677.9	TD at 7108' MD
7,208.5	6,319.0	1,999.7	1,677.9	Permit TD at 7208' MD

EnCana Oil & Gas (USA) Inc

S. Piceance

NWSE S19-T7S-R95W (PJ-19 Pad)

Daybreak Federal 19-8C (PJ-19 Pad)

DD

Plan #2

Anticollision Report

31 March, 2010

Cathedral Energy Services

Anticollision Report

Company:	EnCana Oil & Gas (USA) Inc	Local Co-ordinate Reference:	Well Daybreak Federal 19-8C (PJ-19 Pad)
Project:	S. Piceance	TVD Reference:	KBE @ 5449.0ft (Original Well Elev)
Reference Site:	NWSE S19-T7S-R95W (PJ-19 Pad)	MD Reference:	KBE @ 5449.0ft (Original Well Elev)
Site Error:	0.0ft	North Reference:	True
Reference Well:	Daybreak Federal 19-8C (PJ-19 Pad)	Survey Calculation Method:	Minimum Curvature
Well Error:	0.0ft	Output errors are at	2.00 sigma
Reference Wellbore	DD	Database:	EDM 5000.1 US Multi Users DB
Reference Design:	Plan #2	Offset TVD Reference:	Offset Datum

Reference	Plan #2		
Filter type:	NO GLOBAL FILTER: Using user defined selection & filtering criteria		
Interpolation Method:	Stations	Error Model:	Systematic Ellipse
Depth Range:	0.0 to 1,500.0ft	Scan Method:	Closest Approach 3D
Results Limited by:	Maximum center-center distance of 100.0ft	Error Surface:	Elliptical Conic
Warning Levels Evaluated at:	2.00 Sigma		

Survey Tool Program	Date	3/31/2010		
From (ft)	To (ft)	Survey (Wellbore)	Tool Name	Description
0.0	7,208.5	Plan #2 (DD)	MWD	Geolink MWD

Summary						
Site Name	Reference Measured Depth (ft)	Offset Measured Depth (ft)	Distance Between Centres (ft)	Distance Between Ellipses (ft)	Separation Factor	Warning
NWSE S19-T7S-R95W (PJ-19 Pad)						
Daybreak Federal 19-10A (PJ-19) - DD - Plan #1	200.0	200.0	12.3	11.7	19.792	CC
Daybreak Federal 19-10A (PJ-19) - DD - Plan #1	400.0	398.7	12.6	11.3	9.543	ES
Daybreak Federal 19-10A (PJ-19) - DD - Plan #1	800.0	796.7	18.8	14.3	4.215	SF
Daybreak Federal 19-2 (PJ-19) - DD - Plan #1	200.0	200.0	43.0	42.4	69.201	CC, ES
Daybreak Federal 19-2 (PJ-19) - DD - Plan #1	800.0	799.7	90.4	85.9	20.306	SF
Daybreak Federal 19-2D (PJ-19) - DD - Plan #1	200.0	200.0	32.9	32.3	53.015	CC, ES
Daybreak Federal 19-2D (PJ-19) - DD - Plan #1	700.0	699.3	96.3	93.3	31.955	SF
Daybreak Federal 19-3BB (PJ-19) - DD - Plan #1	200.0	200.0	50.2	49.6	80.772	CC, ES
Daybreak Federal 19-3BB (PJ-19) - DD - Plan #1	600.0	597.1	87.1	84.8	38.659	SF
Daybreak Federal 19-6 (PJ-19) - DD - Plan #1	200.0	200.0	68.6	67.9	110.330	CC, ES
Daybreak Federal 19-6 (PJ-19) - DD - Plan #1	500.0	497.6	90.6	88.9	51.992	SF
Daybreak Federal 19-6BB (PJ 19) - DD - Plan #2	200.0	200.0	83.1	82.5	133.758	CC, ES
Daybreak Federal 19-6BB (PJ 19) - DD - Plan #2	400.0	395.0	96.9	95.5	70.985	SF
Daybreak Federal 19-6C (PJ-19) - DD - Plan #1	200.0	200.0	60.3	59.7	97.086	CC, ES
Daybreak Federal 19-6C (PJ-19) - DD - Plan #1	500.0	495.6	84.5	82.6	44.900	SF
Daybreak Federal 19-6D (PJ-19) - DD - Plan #1	200.0	200.0	75.7	75.1	121.792	CC, ES
Daybreak Federal 19-6D (PJ-19) - DD - Plan #1	400.0	396.5	87.8	86.4	63.764	SF
Daybreak Federal 19-7 (PJ-19) - DD - Plan #1	200.0	200.0	11.9	11.3	19.108	CC, ES
Daybreak Federal 19-7 (PJ-19) - DD - Plan #1	800.0	798.0	46.6	42.0	10.093	SF
Daybreak Federal 19-7BB (PJ-19) - DD - Plan #1	200.0	200.0	25.4	24.8	40.920	CC, ES
Daybreak Federal 19-7BB (PJ-19) - DD - Plan #1	400.0	399.6	33.1	31.8	24.802	SF
Daybreak Federal 19-7C (PJ-19) - DD - Plan #1	200.0	200.0	17.3	16.7	27.903	CC, ES
Daybreak Federal 19-7C (PJ-19) - DD - Plan #1	400.0	399.6	26.4	25.1	19.917	SF
Daybreak Federal 19-8 (PJ-19) - DD - Plan #1	200.0	200.0	29.0	28.4	46.713	CC
Daybreak Federal 19-8 (PJ-19) - DD - Plan #1	700.0	692.5	29.8	27.3	11.735	ES
Daybreak Federal 19-8 (PJ-19) - DD - Plan #1	1,500.0	1,483.2	62.9	51.6	5.570	SF
Daybreak Federal 19-8BB (PJ-19) - DD - Plan #1	200.0	200.0	32.9	32.3	53.015	CC
Daybreak Federal 19-8BB (PJ-19) - DD - Plan #1	300.0	298.3	33.2	32.3	34.282	ES
Daybreak Federal 19-8BB (PJ-19) - DD - Plan #1	1,100.0	1,078.9	93.3	85.1	11.338	SF
Daybreak Federal 19-8D (PJ-19) - DD - Plan #1	200.0	200.0	18.4	17.8	29.693	CC
Daybreak Federal 19-8D (PJ-19) - DD - Plan #1	300.0	299.1	18.6	17.7	19.202	ES
Daybreak Federal 19-8D (PJ-19) - DD - Plan #1	1,500.0	1,487.7	90.7	75.8	6.107	SF

Cathedral Energy Services

Anticollision Report

Company:	EnCana Oil & Gas (USA) Inc	Local Co-ordinate Reference:	Well Daybreak Federal 19-8C (PJ-19 Pad)
Project:	S. Piceance	TVD Reference:	KBE @ 5449.0ft (Original Well Elev)
Reference Site:	NWSE S19-T7S-R95W (PJ-19 Pad)	MD Reference:	KBE @ 5449.0ft (Original Well Elev)
Site Error:	0.0ft	North Reference:	True
Reference Well:	Daybreak Federal 19-8C (PJ-19 Pad)	Survey Calculation Method:	Minimum Curvature
Well Error:	0.0ft	Output errors are at	2.00 sigma
Reference Wellbore	DD	Database:	EDM 5000.1 US Multi Users DB
Reference Design:	Plan #2	Offset TVD Reference:	Offset Datum

Offset Design NWSE S19-T7S-R95W (PJ-19 Pad) - Daybreak Federal 19-10A (PJ-19) - DD - Plan #1													Offset Site Error:	0.0 ft
Survey Program: 0-MWD													Offset Well Error:	0.0 ft
Reference		Offset		Semi Major Axis		Highside Toolface (°)	Distance		Total Uncertainty Axis	Separation Factor	Warning			
Measured Depth (ft)	Vertical Depth (ft)	Measured Depth (ft)	Vertical Depth (ft)	Reference (ft)	Offset (ft)		Between Centres (ft)	Between Ellipses (ft)						
0.0	0.0	0.0	0.0	0.0	0.0	27.35	10.9	5.7	12.3					
100.0	100.0	100.0	100.0	0.1	0.1	27.35	10.9	5.7	12.3	12.0	0.27	45.166		
200.0	200.0	200.0	200.0	0.3	0.3	27.35	10.9	5.7	12.3	11.7	0.62	19.792 CC		
300.0	300.0	299.4	299.3	0.5	0.5	-14.97	13.2	6.9	12.4	11.4	0.97	12.745		
400.0	399.6	398.7	398.3	0.7	0.7	-21.73	20.0	10.6	12.6	11.3	1.32	9.543 ES		
500.0	498.8	498.0	496.8	1.0	1.0	-32.07	31.2	16.9	13.5	11.8	1.73	7.781		
600.0	597.1	597.3	594.4	1.4	1.4	-44.02	47.0	25.6	15.3	13.0	2.31	6.622		
700.0	694.3	697.1	692.0	1.8	1.7	-60.29	65.5	35.8	16.9	13.7	3.20	5.275		
800.0	790.2	796.7	789.3	2.4	2.1	-88.15	83.9	46.0	18.8	14.3	4.45	4.215 SF		
900.0	884.4	895.8	886.1	3.0	2.5	-118.18	102.3	56.1	26.0	20.8	5.17	5.031		
970.7	950.0	965.3	954.1	3.5	2.8	-133.34	115.2	63.2	35.7	30.4	5.27	6.780		
1,000.0	976.9	994.0	982.2	3.7	2.9	-137.96	120.5	66.2	40.6	35.3	5.28	7.690		
1,100.0	1,068.9	1,092.1	1,078.0	4.4	3.3	-147.64	138.7	76.2	58.5	53.1	5.44	10.765		
1,200.0	1,160.8	1,190.1	1,173.8	5.1	3.7	-152.73	156.9	86.2	77.3	71.6	5.71	13.532		
1,270.7	1,225.9	1,259.4	1,241.6	5.6	4.0	-155.04	169.7	93.3	90.8	84.9	5.95	15.266		
1,300.0	1,252.7	1,288.1	1,269.6	5.8	4.1	-155.79	175.1	96.3	96.7	90.6	6.05	15.980		

Cathedral Energy Services

Anticollision Report

Company:	EnCana Oil & Gas (USA) Inc	Local Co-ordinate Reference:	Well Daybreak Federal 19-8C (PJ-19 Pad)
Project:	S. Piceance	TVD Reference:	KBE @ 5449.0ft (Original Well Elev)
Reference Site:	NWSE S19-T7S-R95W (PJ-19 Pad)	MD Reference:	KBE @ 5449.0ft (Original Well Elev)
Site Error:	0.0ft	North Reference:	True
Reference Well:	Daybreak Federal 19-8C (PJ-19 Pad)	Survey Calculation Method:	Minimum Curvature
Well Error:	0.0ft	Output errors are at	2.00 sigma
Reference Wellbore	DD	Database:	EDM 5000.1 US Multi Users DB
Reference Design:	Plan #2	Offset TVD Reference:	Offset Datum

Offset Design NWSE S19-T7S-R95W (PJ-19 Pad) - Daybreak Federal 19-2 (PJ-19) - DD - Plan #1													Offset Site Error: 0.0 ft
Survey Program: 0-MWD													Offset Well Error: 0.0 ft
Reference		Offset		Semi Major Axis			Distance						Warning
Measured Depth (ft)	Vertical Depth (ft)	Measured Depth (ft)	Vertical Depth (ft)	Reference (ft)	Offset (ft)	Highside Toolface (°)	Offset Wellbore Centre +N/-S (ft)	+E/-W (ft)	Between Centres (ft)	Between Ellipses (ft)	Total Uncertainty Axis	Separation Factor	
0.0	0.0	0.0	0.0	0.0	0.0	-99.76	-7.3	-42.4	43.0				
100.0	100.0	100.0	100.0	0.1	0.1	-99.76	-7.3	-42.4	43.0	42.7	0.27	157.921	
200.0	200.0	200.0	200.0	0.3	0.3	-99.76	-7.3	-42.4	43.0	42.4	0.62	69.201	CC, ES
300.0	300.0	300.7	300.6	0.5	0.5	-138.67	-4.7	-42.0	44.2	43.2	0.98	44.961	
400.0	399.6	401.2	400.8	0.7	0.7	-135.73	3.2	-40.9	47.9	46.5	1.40	34.202	
500.0	498.8	501.5	500.3	1.0	1.0	-131.72	16.2	-39.0	54.2	52.3	1.92	28.188	
600.0	597.1	601.4	598.5	1.4	1.4	-127.46	34.3	-36.5	63.4	60.8	2.59	24.420	
700.0	694.3	700.9	695.1	1.8	1.8	-123.50	57.4	-33.2	75.4	72.0	3.44	21.950	
800.0	790.2	799.7	789.9	2.4	2.3	-120.06	85.2	-29.3	90.4	85.9	4.45	20.306	SF

Cathedral Energy Services

Anticollision Report

Company:	EnCana Oil & Gas (USA) Inc	Local Co-ordinate Reference:	Well Daybreak Federal 19-8C (PJ-19 Pad)
Project:	S. Piceance	TVD Reference:	KBE @ 5449.0ft (Original Well Elev)
Reference Site:	NWSE S19-T7S-R95W (PJ-19 Pad)	MD Reference:	KBE @ 5449.0ft (Original Well Elev)
Site Error:	0.0ft	North Reference:	True
Reference Well:	Daybreak Federal 19-8C (PJ-19 Pad)	Survey Calculation Method:	Minimum Curvature
Well Error:	0.0ft	Output errors are at	2.00 sigma
Reference Wellbore	DD	Database:	EDM 5000.1 US Multi Users DB
Reference Design:	Plan #2	Offset TVD Reference:	Offset Datum

Offset Design NWSE S19-T7S-R95W (PJ-19 Pad) - Daybreak Federal 19-2D (PJ-19) - DD - Plan #1													Offset Site Error:	0.0 ft
Survey Program: 0-MWD													Offset Well Error:	0.0 ft
Reference		Offset		Semi Major Axis			Distance							
Measured Depth (ft)	Vertical Depth (ft)	Measured Depth (ft)	Vertical Depth (ft)	Reference (ft)	Offset (ft)	Highside Toolface (°)	Offset Wellbore Centre +N/-S (ft)	+E/-W (ft)	Between Centres (ft)	Between Ellipses (ft)	Total Uncertainty Axis	Separation Factor	Warning	
0.0	0.0	0.0	0.0	0.0	0.0	-109.37	-10.9	-31.1	32.9					
100.0	100.0	100.0	100.0	0.1	0.1	-109.37	-10.9	-31.1	32.9	32.7	0.27	120.983		
200.0	200.0	200.0	200.0	0.3	0.3	-109.37	-10.9	-31.1	32.9	32.3	0.62	53.015 CC, ES		
300.0	300.0	298.7	298.7	0.5	0.5	-148.35	-9.7	-33.3	36.9	35.9	0.97	37.839		
400.0	399.6	397.5	397.2	0.7	0.7	-146.18	-5.7	-39.6	48.4	47.0	1.35	35.750		
500.0	498.8	498.0	497.1	1.0	0.9	-143.61	2.7	-45.9	62.9	61.1	1.80	34.925		
600.0	597.1	598.7	596.7	1.4	1.2	-140.93	16.1	-50.4	78.8	76.5	2.34	33.636		
700.0	694.3	699.3	695.6	1.8	1.6	-138.30	34.5	-53.3	96.3	93.3	3.01	31.955 SF		

Cathedral Energy Services

Anticollision Report

Company:	EnCana Oil & Gas (USA) Inc	Local Co-ordinate Reference:	Well Daybreak Federal 19-8C (PJ-19 Pad)
Project:	S. Piceance	TVD Reference:	KBE @ 5449.0ft (Original Well Elev)
Reference Site:	NWSE S19-T7S-R95W (PJ-19 Pad)	MD Reference:	KBE @ 5449.0ft (Original Well Elev)
Site Error:	0.0ft	North Reference:	True
Reference Well:	Daybreak Federal 19-8C (PJ-19 Pad)	Survey Calculation Method:	Minimum Curvature
Well Error:	0.0ft	Output errors are at	2.00 sigma
Reference Wellbore	DD	Database:	EDM 5000.1 US Multi Users DB
Reference Design:	Plan #2	Offset TVD Reference:	Offset Datum

Offset Design NWSE S19-T7S-R95W (PJ-19 Pad) - Daybreak Federal 19-3BB (PJ-19) - DD - Plan #1													Offset Site Error:	0.0 ft
Survey Program: 0-MWD													Offset Well Error:	0.0 ft
Reference		Offset		Semi Major Axis			Distance						Warning	
Measured Depth (ft)	Vertical Depth (ft)	Measured Depth (ft)	Vertical Depth (ft)	Reference (ft)	Offset (ft)	Highside Toolface (°)	Offset Wellbore Centre +N/-S (ft)	+E/-W (ft)	Between Centres (ft)	Between Ellipses (ft)	Total Uncertainty Axis	Separation Factor		
0.0	0.0	0.0	0.0	0.0	0.0	-106.88	-14.6	-48.0	50.2					
100.0	100.0	100.0	100.0	0.1	0.1	-106.88	-14.6	-48.0	50.2	49.9	0.27	184.325		
200.0	200.0	200.0	200.0	0.3	0.3	-106.88	-14.6	-48.0	50.2	49.6	0.62	80.772 CC, ES		
300.0	300.0	300.0	300.0	0.5	0.5	-148.41	-14.6	-48.0	52.4	51.4	0.97	53.901		
400.0	399.6	399.6	399.5	0.7	0.7	-149.76	-12.2	-49.0	59.2	57.9	1.34	44.332		
500.0	498.8	498.8	498.4	1.0	0.9	-148.60	-5.0	-51.8	70.8	69.0	1.75	40.463		
600.0	597.1	597.1	595.9	1.4	1.1	-146.09	6.9	-56.5	87.1	84.8	2.25	38.659 SF		

Cathedral Energy Services

Anticollision Report

Company:	EnCana Oil & Gas (USA) Inc	Local Co-ordinate Reference:	Well Daybreak Federal 19-8C (PJ-19 Pad)
Project:	S. Piceance	TVD Reference:	KBE @ 5449.0ft (Original Well Elev)
Reference Site:	NWSE S19-T7S-R95W (PJ-19 Pad)	MD Reference:	KBE @ 5449.0ft (Original Well Elev)
Site Error:	0.0ft	North Reference:	True
Reference Well:	Daybreak Federal 19-8C (PJ-19 Pad)	Survey Calculation Method:	Minimum Curvature
Well Error:	0.0ft	Output errors are at	2.00 sigma
Reference Wellbore	DD	Database:	EDM 5000.1 US Multi Users DB
Reference Design:	Plan #2	Offset TVD Reference:	Offset Datum

Offset Design NWSE S19-T7S-R95W (PJ-19 Pad) - Daybreak Federal 19-6 (PJ-19) - DD - Plan #1													Offset Site Error: 0.0 ft
Survey Program: 0-MWD													Offset Well Error: 0.0 ft
Reference		Offset		Semi Major Axis		Distance							
Measured Depth (ft)	Vertical Depth (ft)	Measured Depth (ft)	Vertical Depth (ft)	Reference (ft)	Offset (ft)	Highside Toolface (°)	Offset Wellbore Centre +N/-S (ft)	+E/-W (ft)	Between Centres (ft)	Between Ellipses (ft)	Total Uncertainty Axis	Separation Factor	Warning
0.0	0.0	0.0	0.0	0.0	0.0	-108.59	-21.9	-65.0	68.6				
100.0	100.0	100.0	100.0	0.1	0.1	-108.59	-21.9	-65.0	68.6	68.3	0.27	251.778	
200.0	200.0	200.0	200.0	0.3	0.3	-108.59	-21.9	-65.0	68.6	67.9	0.62	110.330 CC, ES	
300.0	300.0	300.0	300.0	0.5	0.5	-149.66	-21.9	-65.0	70.8	69.8	0.97	72.843	
400.0	399.6	399.1	399.0	0.7	0.7	-150.58	-19.6	-66.2	78.0	76.7	1.33	58.466	
500.0	498.8	497.6	497.2	1.0	0.9	-149.61	-13.0	-70.0	90.6	88.9	1.74	51.992 SF	

Cathedral Energy Services

Anticollision Report

Company:	EnCana Oil & Gas (USA) Inc	Local Co-ordinate Reference:	Well Daybreak Federal 19-8C (PJ-19 Pad)
Project:	S. Piceance	TVD Reference:	KBE @ 5449.0ft (Original Well Elev)
Reference Site:	NWSE S19-T7S-R95W (PJ-19 Pad)	MD Reference:	KBE @ 5449.0ft (Original Well Elev)
Site Error:	0.0ft	North Reference:	True
Reference Well:	Daybreak Federal 19-8C (PJ-19 Pad)	Survey Calculation Method:	Minimum Curvature
Well Error:	0.0ft	Output errors are at	2.00 sigma
Reference Wellbore	DD	Database:	EDM 5000.1 US Multi Users DB
Reference Design:	Plan #2	Offset TVD Reference:	Offset Datum

Offset Design NWSE S19-T7S-R95W (PJ-19 Pad) - Daybreak Federal 19-6BB (PJ 19) - DD - Plan #2													Offset Site Error: 0.0 ft	
Survey Program: 0-MWD													Offset Well Error: 0.0 ft	
Reference		Offset		Semi Major Axis			Distance							
Measured Depth	Vertical Depth	Measured Depth	Vertical Depth	Reference	Offset	Highside Toolface	Offset Wellbore Centre		Between Centres	Between Ellipses	Total Uncertainty	Separation	Warning	
(ft)	(ft)	(ft)	(ft)	(ft)	(ft)	(°)	+N/-S (ft)	+E/-W (ft)	(ft)	(ft)	Axis	Factor		
0.0	0.0	0.0	0.0	0.0	0.0	-107.87	-25.5	-79.1	83.1					
100.0	100.0	100.0	100.0	0.1	0.1	-107.87	-25.5	-79.1	83.1	82.8	0.27	305.243		
200.0	200.0	200.0	200.0	0.3	0.3	-107.87	-25.5	-79.1	83.1	82.5	0.62	133.758	CC, ES	
300.0	300.0	297.9	297.8	0.5	0.5	-147.25	-23.8	-80.9	86.5	85.6	0.97	88.767		
400.0	399.6	395.0	394.6	0.7	0.7	-145.66	-18.6	-86.3	96.9	95.5	1.36	70.985	SF	

Cathedral Energy Services

Anticollision Report

Company:	EnCana Oil & Gas (USA) Inc	Local Co-ordinate Reference:	Well Daybreak Federal 19-8C (PJ-19 Pad)
Project:	S. Piceance	TVD Reference:	KBE @ 5449.0ft (Original Well Elev)
Reference Site:	NWSE S19-T7S-R95W (PJ-19 Pad)	MD Reference:	KBE @ 5449.0ft (Original Well Elev)
Site Error:	0.0ft	North Reference:	True
Reference Well:	Daybreak Federal 19-8C (PJ-19 Pad)	Survey Calculation Method:	Minimum Curvature
Well Error:	0.0ft	Output errors are at	2.00 sigma
Reference Wellbore	DD	Database:	EDM 5000.1 US Multi Users DB
Reference Design:	Plan #2	Offset TVD Reference:	Offset Datum

Offset Design NWSE S19-T7S-R95W (PJ-19 Pad) - Daybreak Federal 19-6C (PJ-19) - DD - Plan #1													Offset Site Error: 0.0 ft
Survey Program: 0-MWD													Offset Well Error: 0.0 ft
Reference		Offset		Semi Major Axis			Distance						Warning
Measured Depth (ft)	Vertical Depth (ft)	Measured Depth (ft)	Vertical Depth (ft)	Reference (ft)	Offset (ft)	Highside Toolface (°)	Offset Wellbore Centre +N/-S (ft)	+E/-W (ft)	Between Centres (ft)	Between Ellipses (ft)	Total Uncertainty Axis	Separation Factor	
0.0	0.0	0.0	0.0	0.0	0.0	-100.44	-10.9	-59.3	60.3				
100.0	100.0	100.0	100.0	0.1	0.1	-100.44	-10.9	-59.3	60.3	60.1	0.27	221.555	
200.0	200.0	200.0	200.0	0.3	0.3	-100.44	-10.9	-59.3	60.3	59.7	0.62	97.086 CC, ES	
300.0	300.0	299.2	299.1	0.5	0.5	-139.62	-8.6	-60.4	63.0	62.0	0.98	64.276	
400.0	399.6	397.8	397.5	0.7	0.7	-137.53	-1.6	-63.6	71.0	69.6	1.39	51.172	
500.0	498.8	495.6	494.5	1.0	1.0	-134.89	9.8	-68.9	84.5	82.6	1.88	44.900 SF	

Cathedral Energy Services

Anticollision Report

Company:	EnCana Oil & Gas (USA) Inc	Local Co-ordinate Reference:	Well Daybreak Federal 19-8C (PJ-19 Pad)
Project:	S. Piceance	TVD Reference:	KBE @ 5449.0ft (Original Well Elev)
Reference Site:	NWSE S19-T7S-R95W (PJ-19 Pad)	MD Reference:	KBE @ 5449.0ft (Original Well Elev)
Site Error:	0.0ft	North Reference:	True
Reference Well:	Daybreak Federal 19-8C (PJ-19 Pad)	Survey Calculation Method:	Minimum Curvature
Well Error:	0.0ft	Output errors are at	2.00 sigma
Reference Wellbore	DD	Database:	EDM 5000.1 US Multi Users DB
Reference Design:	Plan #2	Offset TVD Reference:	Offset Datum

Offset Design NWSE S19-T7S-R95W (PJ-19 Pad) - Daybreak Federal 19-6D (PJ-19) - DD - Plan #1													Offset Site Error: 0.0 ft
Survey Program: 0-MWD													Offset Well Error: 0.0 ft
Reference		Offset		Semi Major Axis			Distance						Warning
Measured Depth (ft)	Vertical Depth (ft)	Measured Depth (ft)	Vertical Depth (ft)	Reference (ft)	Offset (ft)	Highside Toolface (°)	Offset Wellbore Centre +N/-S (ft)	+E/-W (ft)	Between Centres (ft)	Between Ellipses (ft)	Total Uncertainty Axis	Separation Factor	
0.0	0.0	0.0	0.0	0.0	0.0	-103.93	-18.2	-73.5	75.7				
100.0	100.0	100.0	100.0	0.1	0.1	-103.93	-18.2	-73.5	75.7	75.4	0.27	277.936	
200.0	200.0	200.0	200.0	0.3	0.3	-103.93	-18.2	-73.5	75.7	75.1	0.62	121.792 CC, ES	
300.0	300.0	298.5	298.5	0.5	0.5	-143.25	-16.1	-74.9	78.7	77.7	0.98	80.503	
400.0	399.6	396.5	396.1	0.7	0.7	-141.48	-9.9	-79.2	87.8	86.4	1.38	63.764 SF	

Cathedral Energy Services

Anticollision Report

Company:	EnCana Oil & Gas (USA) Inc	Local Co-ordinate Reference:	Well Daybreak Federal 19-8C (PJ-19 Pad)
Project:	S. Piceance	TVD Reference:	KBE @ 5449.0ft (Original Well Elev)
Reference Site:	NWSE S19-T7S-R95W (PJ-19 Pad)	MD Reference:	KBE @ 5449.0ft (Original Well Elev)
Site Error:	0.0ft	North Reference:	True
Reference Well:	Daybreak Federal 19-8C (PJ-19 Pad)	Survey Calculation Method:	Minimum Curvature
Well Error:	0.0ft	Output errors are at	2.00 sigma
Reference Wellbore	DD	Database:	EDM 5000.1 US Multi Users DB
Reference Design:	Plan #2	Offset TVD Reference:	Offset Datum

Offset Design NWSE S19-T7S-R95W (PJ-19 Pad) - Daybreak Federal 19-7 (PJ-19) - DD - Plan #1													Offset Site Error:	0.0 ft
Survey Program: 0-MWD													Offset Well Error:	0.0 ft
Reference		Offset		Semi Major Axis			Distance					Separation Factor	Warning	
Measured Depth (ft)	Vertical Depth (ft)	Measured Depth (ft)	Vertical Depth (ft)	Reference (ft)	Offset (ft)	Highside Toolface (°)	Offset Wellbore Centre +N/-S (ft)	+E/-W (ft)	Between Centres (ft)	Between Ellipses (ft)	Total Uncertainty Axis			
0.0	0.0	0.0	0.0	0.0	0.0	-72.13	3.6	-11.3	11.9					
100.0	100.0	100.0	100.0	0.1	0.1	-72.13	3.6	-11.3	11.9	11.6	0.27	43.605		
200.0	200.0	200.0	200.0	0.3	0.3	-72.13	3.6	-11.3	11.9	11.3	0.62	19.108 CC, ES		
300.0	300.0	300.0	300.0	0.5	0.5	-111.25	6.1	-10.5	12.8	11.8	0.99	13.012		
400.0	399.6	399.9	399.6	0.7	0.7	-109.23	13.6	-8.0	15.7	14.3	1.42	11.055		
500.0	498.8	499.8	498.5	1.0	1.0	-107.10	25.9	-3.9	20.6	18.6	1.98	10.381		
600.0	597.1	599.4	596.5	1.4	1.4	-105.36	43.1	1.9	27.3	24.6	2.69	10.156		
700.0	694.3	698.9	693.2	1.8	1.8	-104.02	65.1	9.2	36.0	32.4	3.57	10.094		
800.0	790.2	798.0	788.3	2.4	2.3	-103.01	91.7	18.1	46.6	42.0	4.62	10.093 SF		
900.0	884.4	897.1	881.8	3.0	2.9	-102.63	122.6	28.4	58.9	53.1	5.80	10.157		
970.7	950.0	967.1	947.7	3.5	3.3	-104.41	145.0	35.9	68.5	61.8	6.68	10.250		
1,000.0	976.9	996.0	975.0	3.7	3.5	-105.52	154.2	39.0	72.6	65.6	7.04	10.310		
1,100.0	1,068.9	1,094.9	1,068.1	4.4	4.1	-108.51	185.8	49.5	86.8	78.6	8.27	10.501		

Cathedral Energy Services

Anticollision Report

Company:	EnCana Oil & Gas (USA) Inc	Local Co-ordinate Reference:	Well Daybreak Federal 19-8C (PJ-19 Pad)
Project:	S. Piceance	TVD Reference:	KBE @ 5449.0ft (Original Well Elev)
Reference Site:	NWSE S19-T7S-R95W (PJ-19 Pad)	MD Reference:	KBE @ 5449.0ft (Original Well Elev)
Site Error:	0.0ft	North Reference:	True
Reference Well:	Daybreak Federal 19-8C (PJ-19 Pad)	Survey Calculation Method:	Minimum Curvature
Well Error:	0.0ft	Output errors are at	2.00 sigma
Reference Wellbore	DD	Database:	EDM 5000.1 US Multi Users DB
Reference Design:	Plan #2	Offset TVD Reference:	Offset Datum

Offset Design NWSE S19-T7S-R95W (PJ-19 Pad) - Daybreak Federal 19-7BB (PJ-19) - DD - Plan #1												Offset Site Error:	0.0 ft
Survey Program: 0-MWD												Offset Well Error:	0.0 ft
Reference		Offset		Semi Major Axis			Distance						
Measured Depth (ft)	Vertical Depth (ft)	Measured Depth (ft)	Vertical Depth (ft)	Reference (ft)	Offset (ft)	Highside Toolface (°)	Offset Wellbore Centre +N/-S (ft)	+E/-W (ft)	Between Centres (ft)	Between Ellipses (ft)	Total Uncertainty Axis	Separation Factor	Warning
0.0	0.0	0.0	0.0	0.0	0.0	-90.00	0.0	-25.4	25.4				
100.0	100.0	100.0	100.0	0.1	0.1	-90.00	0.0	-25.4	25.4	25.2	0.27	93.381	
200.0	200.0	200.0	200.0	0.3	0.3	-90.00	0.0	-25.4	25.4	24.8	0.62	40.920 CC, ES	
300.0	300.0	300.0	300.0	0.5	0.5	-134.19	0.0	-25.4	27.2	26.2	0.97	27.897	
400.0	399.6	399.6	399.6	0.7	0.7	-143.85	0.0	-25.4	33.1	31.8	1.34	24.802 SF	
500.0	498.8	498.8	498.8	1.0	0.8	-153.67	0.0	-25.4	44.4	42.7	1.69	26.200	
600.0	597.1	599.2	599.1	1.4	1.0	-159.38	2.5	-24.9	59.6	57.5	2.05	29.042	
700.0	694.3	700.1	699.8	1.8	1.2	-161.04	10.3	-23.3	76.4	74.0	2.43	31.397	
800.0	790.2	801.6	800.3	2.4	1.5	-160.67	23.3	-20.6	94.6	91.7	2.87	32.954	

Cathedral Energy Services

Anticollision Report

Company:	EnCana Oil & Gas (USA) Inc	Local Co-ordinate Reference:	Well Daybreak Federal 19-8C (PJ-19 Pad)
Project:	S. Piceance	TVD Reference:	KBE @ 5449.0ft (Original Well Elev)
Reference Site:	NWSE S19-T7S-R95W (PJ-19 Pad)	MD Reference:	KBE @ 5449.0ft (Original Well Elev)
Site Error:	0.0ft	North Reference:	True
Reference Well:	Daybreak Federal 19-8C (PJ-19 Pad)	Survey Calculation Method:	Minimum Curvature
Well Error:	0.0ft	Output errors are at	2.00 sigma
Reference Wellbore	DD	Database:	EDM 5000.1 US Multi Users DB
Reference Design:	Plan #2	Offset TVD Reference:	Offset Datum

Offset Design NWSE S19-T7S-R95W (PJ-19 Pad) - Daybreak Federal 19-7C (PJ-19) - DD - Plan #1												Offset Site Error:	0.0 ft
Survey Program: 0-MWD												Offset Well Error:	0.0 ft
Reference		Offset		Semi Major Axis			Distance				Total Uncertainty Axis	Separation Factor	Warning
Measured Depth (ft)	Vertical Depth (ft)	Measured Depth (ft)	Vertical Depth (ft)	Reference (ft)	Offset (ft)	Highside Toolface (°)	Offset Wellbore Centre +N/-S (ft)	+E/-W (ft)	Between Centres (ft)	Between Ellipses (ft)			
0.0	0.0	0.0	0.0	0.0	0.0	-102.13	-3.6	-17.0	17.3				
100.0	100.0	100.0	100.0	0.1	0.1	-102.13	-3.6	-17.0	17.3	17.1	0.27	63.675	
200.0	200.0	200.0	200.0	0.3	0.3	-102.13	-3.6	-17.0	17.3	16.7	0.62	27.903 CC, ES	
300.0	300.0	300.0	300.0	0.5	0.5	-146.83	-3.6	-17.0	19.5	18.5	0.97	20.023	
400.0	399.6	399.6	399.6	0.7	0.7	-156.10	-3.6	-17.0	26.4	25.1	1.32	19.917 SF	
500.0	498.8	498.8	498.8	1.0	0.8	-163.84	-3.6	-17.0	38.7	37.0	1.67	23.155	
600.0	597.1	597.1	597.1	1.4	1.0	-168.89	-3.6	-17.0	56.4	54.4	2.01	28.105	
700.0	694.3	694.3	694.3	1.8	1.2	-172.04	-3.6	-17.0	79.5	77.1	2.34	34.021	

Cathedral Energy Services

Anticollision Report

Company:	EnCana Oil & Gas (USA) Inc	Local Co-ordinate Reference:	Well Daybreak Federal 19-8C (PJ-19 Pad)
Project:	S. Piceance	TVD Reference:	KBE @ 5449.0ft (Original Well Elev)
Reference Site:	NWSE S19-T7S-R95W (PJ-19 Pad)	MD Reference:	KBE @ 5449.0ft (Original Well Elev)
Site Error:	0.0ft	North Reference:	True
Reference Well:	Daybreak Federal 19-8C (PJ-19 Pad)	Survey Calculation Method:	Minimum Curvature
Well Error:	0.0ft	Output errors are at	2.00 sigma
Reference Wellbore	DD	Database:	EDM 5000.1 US Multi Users DB
Reference Design:	Plan #2	Offset TVD Reference:	Offset Datum

Offset Design NWSE S19-T7S-R95W (PJ-19 Pad) - Daybreak Federal 19-8 (PJ-19) - DD - Plan #1													Offset Site Error:	0.0 ft
Survey Program: 0-MWD													Offset Well Error:	0.0 ft
Reference		Offset		Semi Major Axis		Highside Toolface (°)	Distance		Total Uncertainty Axis	Separation Factor	Warning			
Measured Depth (ft)	Vertical Depth (ft)	Measured Depth (ft)	Vertical Depth (ft)	Reference (ft)	Offset (ft)		Offset Wellbore Centre +N/-S (ft)	+E/-W (ft)						
0.0	0.0	0.0	0.0	0.0	0.0	51.14	18.2	22.6	29.0					
100.0	100.0	100.0	100.0	0.1	0.1	51.14	18.2	22.6	29.0	28.8	0.27	106.601		
200.0	200.0	200.0	200.0	0.3	0.3	51.14	18.2	22.6	29.0	28.4	0.62	46.713 CC		
226.2	226.2	225.8	225.8	0.4	0.4	11.17	18.3	22.7	29.0	28.3	0.71	40.672		
300.0	300.0	298.5	298.5	0.5	0.5	11.67	20.0	24.4	29.0	28.1	0.97	29.997		
400.0	399.6	397.0	396.7	0.7	0.7	13.27	25.3	29.9	29.0	27.7	1.32	22.076		
500.0	498.8	495.5	494.3	1.0	1.0	15.93	34.1	39.0	29.1	27.5	1.67	17.402		
600.0	597.1	594.0	591.2	1.4	1.3	19.60	46.3	51.7	29.4	27.3	2.07	14.211		
700.0	694.3	692.5	687.1	1.8	1.8	24.20	62.1	68.0	29.8	27.3	2.54	11.735 ES		
800.0	790.2	791.0	781.7	2.4	2.3	29.56	81.2	87.9	30.6	27.4	3.18	9.632		
900.0	884.4	889.5	874.7	3.0	2.9	35.44	103.7	111.2	31.9	27.8	4.07	7.831		
970.7	950.0	959.2	939.3	3.5	3.4	39.76	121.6	129.7	33.2	28.3	4.90	6.771		
1,000.0	976.9	988.0	965.9	3.7	3.6	41.32	129.5	137.9	33.9	28.7	5.26	6.451		
1,100.0	1,068.9	1,086.4	1,054.9	4.4	4.4	43.01	158.5	168.0	39.3	33.0	6.36	6.185		
1,200.0	1,160.8	1,185.8	1,143.5	5.1	5.3	41.86	189.9	200.4	47.3	40.1	7.25	6.530		
1,270.7	1,225.9	1,256.3	1,206.3	5.6	5.8	41.23	212.1	223.4	53.0	45.1	7.88	6.730		
1,300.0	1,252.7	1,285.5	1,232.4	5.8	6.1	41.12	221.3	233.0	55.2	47.0	8.16	6.768		
1,400.0	1,343.0	1,385.4	1,321.3	6.7	6.9	42.94	252.8	265.6	60.2	50.7	9.48	6.344		
1,500.0	1,430.8	1,483.2	1,407.6	7.6	7.8	46.69	284.7	298.7	62.9	51.6	11.30	5.570 SF		

Cathedral Energy Services

Anticollision Report

Company:	EnCana Oil & Gas (USA) Inc	Local Co-ordinate Reference:	Well Daybreak Federal 19-8C (PJ-19 Pad)
Project:	S. Piceance	TVD Reference:	KBE @ 5449.0ft (Original Well Elev)
Reference Site:	NWSE S19-T7S-R95W (PJ-19 Pad)	MD Reference:	KBE @ 5449.0ft (Original Well Elev)
Site Error:	0.0ft	North Reference:	True
Reference Well:	Daybreak Federal 19-8C (PJ-19 Pad)	Survey Calculation Method:	Minimum Curvature
Well Error:	0.0ft	Output errors are at	2.00 sigma
Reference Wellbore	DD	Database:	EDM 5000.1 US Multi Users DB
Reference Design:	Plan #2	Offset TVD Reference:	Offset Datum

Offset Design NWSE S19-T7S-R95W (PJ-19 Pad) - Daybreak Federal 19-8BB (PJ-19) - DD - Plan #1													Offset Site Error:	0.0 ft
Survey Program:		0-MWD											Offset Well Error:	0.0 ft
Reference		Offset		Semi Major Axis			Distance							Warning
Measured Depth	Vertical Depth	Measured Depth	Vertical Depth	Reference	Offset	Highside Toolface	Offset Wellbore Centre		Between Centres	Between Ellipses	Total Uncertainty Axis	Separation Factor		
(ft)	(ft)	(ft)	(ft)	(ft)	(ft)	(°)	+N/-S (ft)	+E/-W (ft)	(ft)	(ft)				
0.0	0.0	0.0	0.0	0.0	0.0	70.63	10.9	31.1	32.9					
100.0	100.0	100.0	100.0	0.1	0.1	70.63	10.9	31.1	32.9	32.7	0.27	120.983		
200.0	200.0	200.0	200.0	0.3	0.3	70.63	10.9	31.1	32.9	32.3	0.62	53.015 CC		
300.0	300.0	298.3	298.3	0.5	0.5	32.21	12.1	33.3	33.2	32.3	0.97	34.282 ES		
400.0	399.6	396.6	396.2	0.7	0.7	36.78	15.7	40.0	34.3	33.0	1.34	25.681		
500.0	498.8	494.7	493.6	1.0	1.0	43.68	21.6	51.1	36.5	34.8	1.76	20.716		
600.0	597.1	592.7	590.0	1.4	1.3	51.85	29.9	66.5	40.4	38.1	2.33	17.341		
700.0	694.3	690.5	685.2	1.8	1.8	60.06	40.5	86.3	46.3	43.2	3.11	14.898		
800.0	790.2	788.1	778.9	2.4	2.3	67.40	53.4	110.3	54.6	50.4	4.13	13.206		
900.0	884.4	885.4	870.8	3.0	2.9	73.47	68.4	138.3	65.1	59.7	5.38	12.104		
970.7	950.0	954.0	934.5	3.5	3.4	77.00	80.3	160.5	73.9	67.5	6.38	11.588		
1,000.0	976.9	982.3	960.6	3.7	3.6	78.24	85.6	170.3	77.9	71.1	6.80	11.459		
1,100.0	1,068.9	1,078.9	1,048.2	4.4	4.4	79.95	104.8	206.2	93.3	85.1	8.23	11.338 SF		

Cathedral Energy Services

Anticollision Report

Company:	EnCana Oil & Gas (USA) Inc	Local Co-ordinate Reference:	Well Daybreak Federal 19-8C (PJ-19 Pad)
Project:	S. Piceance	TVD Reference:	KBE @ 5449.0ft (Original Well Elev)
Reference Site:	NWSE S19-T7S-R95W (PJ-19 Pad)	MD Reference:	KBE @ 5449.0ft (Original Well Elev)
Site Error:	0.0ft	North Reference:	True
Reference Well:	Daybreak Federal 19-8C (PJ-19 Pad)	Survey Calculation Method:	Minimum Curvature
Well Error:	0.0ft	Output errors are at	2.00 sigma
Reference Wellbore	DD	Database:	EDM 5000.1 US Multi Users DB
Reference Design:	Plan #2	Offset TVD Reference:	Offset Datum

Offset Design		NWSE S19-T7S-R95W (PJ-19 Pad) - Daybreak Federal 19-8D (PJ-19) - DD - Plan #1											Offset Site Error:		0.0 ft
Survey Program: 0-MWD													Offset Well Error:		0.0 ft
Reference		Offset		Semi Major Axis			Distance								Warning
Measured Depth (ft)	Vertical Depth (ft)	Measured Depth (ft)	Vertical Depth (ft)	Reference (ft)	Offset (ft)	Highside Toolface (°)	Offset Wellbore Centre +N/-S (ft)	+E/-W (ft)	Between Centres (ft)	Between Ellipses (ft)	Total Uncertainty Axis	Separation Factor			
0.0	0.0	0.0	0.0	0.0	0.0	66.74	7.3	17.0	18.4						
100.0	100.0	100.0	100.0	0.1	0.1	66.74	7.3	17.0	18.4	18.2	0.27	67.760			
200.0	200.0	200.0	200.0	0.3	0.3	66.74	7.3	17.0	18.4	17.8	0.62	29.693 CC			
300.0	300.0	299.1	299.0	0.5	0.5	28.48	8.8	19.0	18.6	17.7	0.97	19.202 ES			
400.0	399.6	398.1	397.8	0.7	0.7	33.45	13.4	25.2	19.3	18.0	1.34	14.435			
500.0	498.8	497.1	495.9	1.0	1.0	40.89	21.1	35.4	20.7	19.0	1.77	11.702			
600.0	597.1	596.1	593.2	1.4	1.3	49.53	31.8	49.7	23.2	20.9	2.36	9.842			
700.0	694.3	695.0	689.4	1.8	1.8	58.00	45.5	68.0	27.0	23.8	3.17	8.510			
800.0	790.2	793.8	784.2	2.4	2.3	65.40	62.1	90.3	32.2	28.0	4.23	7.609			
900.0	884.4	892.4	877.4	3.0	3.0	71.41	81.6	116.4	38.8	33.3	5.51	7.038			
970.7	950.0	962.8	943.1	3.5	3.4	76.09	96.7	136.6	43.8	37.3	6.54	6.704			
1,000.0	976.9	992.0	970.3	3.7	3.6	78.43	103.0	144.9	45.9	38.9	6.98	6.571			
1,100.0	1,068.9	1,091.5	1,063.2	4.4	4.3	85.01	124.4	173.5	53.3	44.9	8.47	6.297			
1,200.0	1,160.8	1,191.1	1,156.2	5.1	4.9	89.93	145.7	202.1	61.3	51.4	9.91	6.187			
1,270.7	1,225.9	1,261.1	1,221.2	5.6	5.4	91.86	161.3	222.9	67.4	56.4	10.95	6.151			
1,300.0	1,252.7	1,290.1	1,247.8	5.8	5.7	92.06	168.2	232.1	70.0	58.6	11.39	6.150			
1,400.0	1,343.0	1,389.0	1,337.3	6.7	6.5	92.64	193.4	265.8	79.8	66.8	13.03	6.125			
1,500.0	1,430.8	1,487.7	1,424.3	7.6	7.4	93.09	221.2	303.1	90.7	75.8	14.85	6.107 SF			

Cathedral Energy Services

Anticollision Report

Company:	EnCana Oil & Gas (USA) Inc	Local Co-ordinate Reference:	Well Daybreak Federal 19-8C (PJ-19 Pad)
Project:	S. Piceance	TVD Reference:	KBE @ 5449.0ft (Original Well Elev)
Reference Site:	NWSE S19-T7S-R95W (PJ-19 Pad)	MD Reference:	KBE @ 5449.0ft (Original Well Elev)
Site Error:	0.0ft	North Reference:	True
Reference Well:	Daybreak Federal 19-8C (PJ-19 Pad)	Survey Calculation Method:	Minimum Curvature
Well Error:	0.0ft	Output errors are at	2.00 sigma
Reference Wellbore	DD	Database:	EDM 5000.1 US Multi Users DB
Reference Design:	Plan #2	Offset TVD Reference:	Offset Datum

Reference Depths are relative to KBE @ 5449.0ft (Original Well Elev)
Offset Depths are relative to Offset Datum
Central Meridian is -105.500000 °

Coordinates are relative to: Daybreak Federal 19-8C (PJ-19 Pad)
Coordinate System is US State Plane 1983, Colorado Central Zone
Grid Convergence at Surface is: -1.60°

