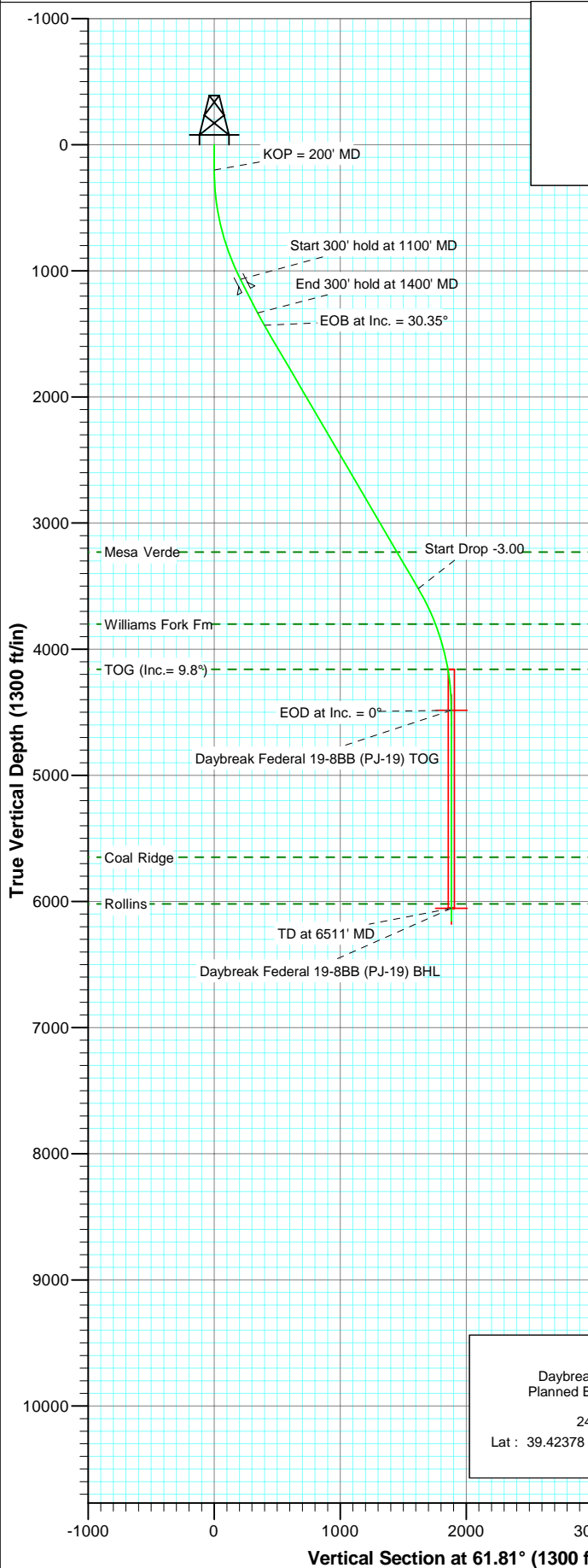
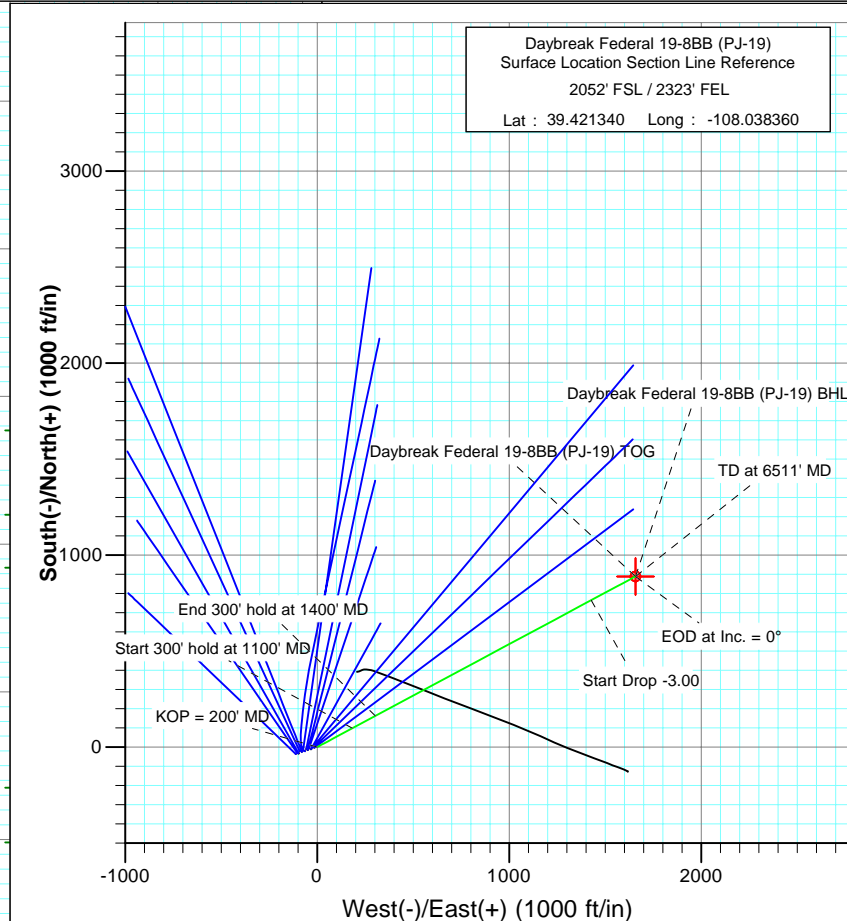




Project: S. Piceance
Site: NWSE S19-T7S-R95W (PJ-19 Pad)
Well: Daybreak Federal 19-8BB (PJ-19)
Wellbore: DD
Plan: Plan #1



SECTION DETAILS										
Sec	MD	Inc	Azi	TVD	+N/-S	+E/-W	Dleg	TFace	VSect	Target
1	0.0	0.00	0.00	0.0	0.0	0.0	0.00	0.00	0.0	
2	200.0	0.00	0.00	200.0	0.0	0.0	0.00	0.00	0.0	
3	1100.0	27.00	61.81	1067.1	98.3	183.5	3.00	61.81	208.2	
4	1400.0	27.00	61.81	1334.4	162.7	303.5	0.00	0.00	344.4	
5	1511.6	30.35	61.81	1432.3	188.0	350.7	3.00	-0.01	397.9	
6	3929.7	30.35	61.81	3519.0	765.2	1427.6	0.00	0.00	1619.7	
7	4941.3	0.00	0.00	4484.0	888.8	1658.2	3.00	180.00	1881.4	Daybreak Federal 19-8BB (PJ-19) TOG
8	6511.3	0.00	0.00	6054.0	888.8	1658.2	0.00	0.00	1881.4	Daybreak Federal 19-8BB (PJ-19) BHL
9	6611.3	0.00	0.00	6154.0	888.8	1658.2	0.00	0.00	1881.4	



FORMATION TOP DETAILS

TVDPath	MDPath	Formation
3229.0	3593.6	Mesa Verde
3800.0	4241.8	Williams Fork Fm
4159.0	4614.8	TOG (Inc. = 9.8°)
5649.0	6106.3	Coal Ridge
6019.0	6476.3	Rollins



Azimuths to True North
Magnetic North: 10.52°

Magnetic Field
Strength: 52335.3snT
Dip Angle: 65.70°
Date: 3/12/2010
Model: IGRF2010

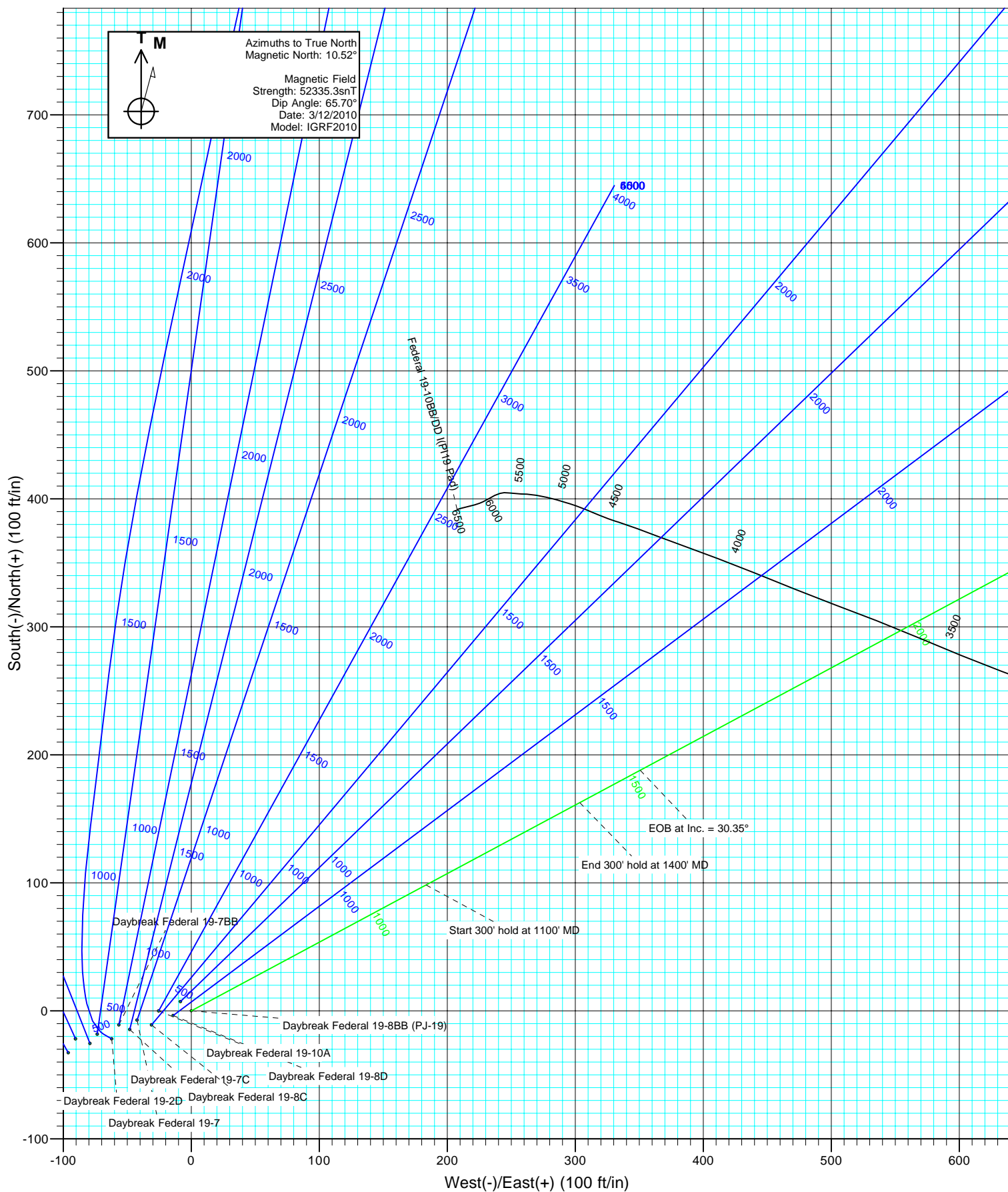
DESIGN DETAILS: Plan #1

Job# 105XXX
KBE @ 5449.0ft (Original Well Elev)

Target	Azimuth	Origin Type	N/S	E/W
Daybreak Federal 19-8BB (PJ-19) BHL	1.81	Slot	0.0	0.0

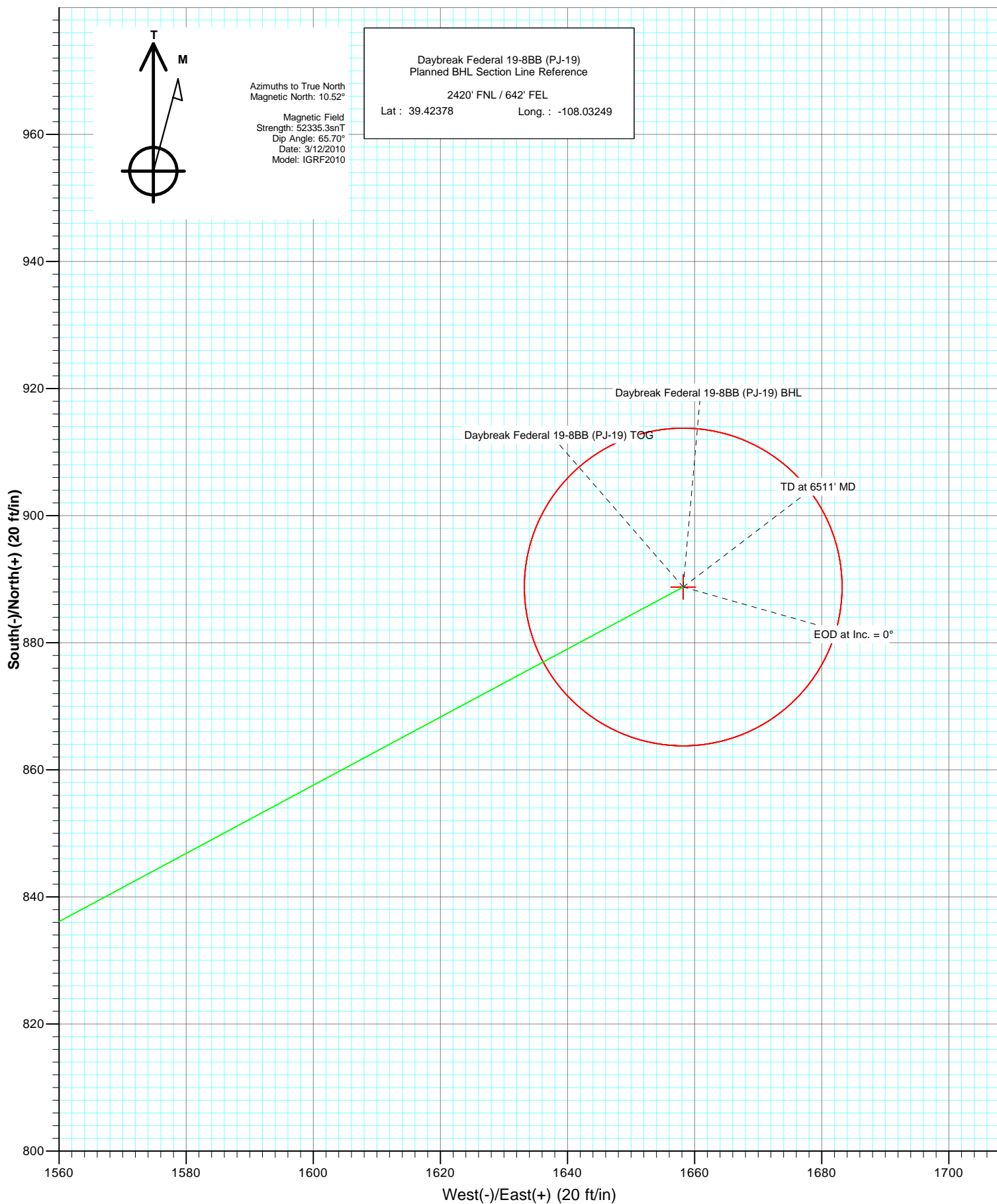


Project: S. Piceance
Site: NWSE S19-T7S-R95W (PJ-19 Pad)
Well: Daybreak Federal 19-8BB (PJ-19)
Wellbore: DD
Design: Plan #1





Project: S. Piceance
Site: NWSE S19-T7S-R95W (PJ-19 Pad)
Well: Daybreak Federal 19-8BB (PJ-19)
Wellbore: DD
Plan: Plan #1



Cathedral Energy Services

Planning Report

Database:	EDM 5000.1 US Multi Users DB	Local Co-ordinate Reference:	Well Daybreak Federal 19-8BB (PJ-19)
Company:	EnCana Oil & Gas (USA) Inc	TVD Reference:	KBE @ 5449.0ft (Original Well Elev)
Project:	S. Piceance	MD Reference:	KBE @ 5449.0ft (Original Well Elev)
Site:	NWSE S19-T7S-R95W (PJ-19 Pad)	North Reference:	True
Well:	Daybreak Federal 19-8BB (PJ-19)	Survey Calculation Method:	Minimum Curvature
Wellbore:	DD		
Design:	Plan #1		

Project	S. Piceance, Garfield County, CO		
Map System:	US State Plane 1983	System Datum:	Mean Sea Level
Geo Datum:	North American Datum 1983		
Map Zone:	Colorado Central Zone		

Site		NWSE S19-T7S-R95W (PJ-19 Pad)			
Site Position:		Northing:	1,588,373.67 ft	Latitude:	39.421340
From:	Lat/Long	Easting:	2,283,011.65 ft	Longitude:	-108.038360
Position Uncertainty:	0.0 ft	Slot Radius:	13.200 in	Grid Convergence:	-1.60 °

Well	Daybreak Federal 19-8BB (PJ-19)					
Well Position	+N/-S	0.0 ft	Northing:	1,588,373.66 ft	Latitude:	39.421340
	+E/-W	0.0 ft	Easting:	2,283,011.65 ft	Longitude:	-108.038360
Position Uncertainty		0.0 ft	Wellhead Elevation:	ft	Ground Level:	5,427.0 ft

Wellbore	DD				
Magnetics	Model Name	Sample Date	Declination (°)	Dip Angle (°)	Field Strength (nT)
	IGRF2010	3/12/2010	10.52	65.70	52,335

Design	Plan #1			
Audit Notes:				
Version:	Phase:	PLAN	Tie On Depth:	0.0
Vertical Section:	Depth From (TVD) (ft)	+N/-S (ft)	+E/-W (ft)	Direction (°)
		0.0	0.0	61.81

Plan Sections										
Measured Depth (ft)	Inclination (°)	Azimuth (°)	Vertical Depth (ft)	+N/-S (ft)	+E/-W (ft)	Dogleg Rate (°/100ft)	Build Rate (°/100ft)	Turn Rate (°/100ft)	TFO (°)	Target
0.0	0.00	0.00	0.0	0.0	0.0	0.00	0.00	0.00	0.00	
200.0	0.00	0.00	200.0	0.0	0.0	0.00	0.00	0.00	0.00	
1,100.0	27.00	61.81	1,067.1	98.3	183.5	3.00	3.00	0.00	61.81	
1,400.0	27.00	61.81	1,334.4	162.7	303.5	0.00	0.00	0.00	0.00	
1,511.6	30.35	61.81	1,432.3	188.0	350.7	3.00	3.00	0.00	-0.01	
3,929.7	30.35	61.81	3,519.0	765.2	1,427.6	0.00	0.00	0.00	0.00	
4,941.3	0.00	0.00	4,484.0	888.8	1,658.2	3.00	-3.00	0.00	180.00	Daybreak Federal 19-
6,511.3	0.00	0.00	6,054.0	888.8	1,658.2	0.00	0.00	0.00	0.00	Daybreak Federal 19-
6,611.3	0.00	0.00	6,154.0	888.8	1,658.2	0.00	0.00	0.00	0.00	

Cathedral Energy Services

Planning Report

Database:	EDM 5000.1 US Multi Users DB	Local Co-ordinate Reference:	Well Daybreak Federal 19-8BB (PJ-19)
Company:	EnCana Oil & Gas (USA) Inc	TVD Reference:	KBE @ 5449.0ft (Original Well Elev)
Project:	S. Piceance	MD Reference:	KBE @ 5449.0ft (Original Well Elev)
Site:	NWSE S19-T7S-R95W (PJ-19 Pad)	North Reference:	True
Well:	Daybreak Federal 19-8BB (PJ-19)	Survey Calculation Method:	Minimum Curvature
Wellbore:	DD		
Design:	Plan #1		

Planned Survey									
Measured Depth (ft)	Inclination (°)	Azimuth (°)	Vertical Depth (ft)	+N/-S (ft)	+E/-W (ft)	Vertical Section (ft)	Dogleg Rate (°/100ft)	Build Rate (°/100ft)	Comments / Formations
0.0	0.00	0.00	0.0	0.0	0.0	0.0	0.00	0.00	
100.0	0.00	0.00	100.0	0.0	0.0	0.0	0.00	0.00	
200.0	0.00	0.00	200.0	0.0	0.0	0.0	0.00	0.00	KOP = 200' MD
300.0	3.00	61.81	300.0	1.2	2.3	2.6	3.00	3.00	
400.0	6.00	61.81	399.6	4.9	9.2	10.5	3.00	3.00	
500.0	9.00	61.81	498.8	11.1	20.7	23.5	3.00	3.00	
600.0	12.00	61.81	597.1	19.7	36.8	41.7	3.00	3.00	
700.0	15.00	61.81	694.3	30.7	57.4	65.1	3.00	3.00	
800.0	18.00	61.81	790.2	44.2	82.4	93.5	3.00	3.00	
900.0	21.00	61.81	884.4	59.9	111.8	126.9	3.00	3.00	
1,000.0	24.00	61.81	976.8	78.0	145.5	165.1	3.00	3.00	
1,100.0	27.00	61.81	1,067.1	98.3	183.5	208.2	3.00	3.00	Start 300' hold at 1100' MD
1,200.0	27.00	61.81	1,156.2	119.8	223.5	253.6	0.00	0.00	Surface Casing
1,300.0	27.00	61.81	1,245.3	141.2	263.5	299.0	0.00	0.00	
1,400.0	27.00	61.81	1,334.4	162.7	303.5	344.4	0.00	0.00	End 300' hold at 1400' MD
1,500.0	30.00	61.81	1,422.2	185.2	345.6	392.1	3.00	3.00	
1,511.6	30.35	61.81	1,432.3	188.0	350.7	397.9	3.00	3.00	EOB at Inc. = 30.35°
1,600.0	30.35	61.81	1,508.5	209.1	390.1	442.6	0.00	0.00	
1,700.0	30.35	61.81	1,594.8	232.9	434.6	493.1	0.00	0.00	
1,800.0	30.35	61.81	1,681.1	256.8	479.1	543.6	0.00	0.00	
1,900.0	30.35	61.81	1,767.4	280.7	523.7	594.1	0.00	0.00	
2,000.0	30.35	61.81	1,853.7	304.5	568.2	644.7	0.00	0.00	
2,100.0	30.35	61.81	1,940.0	328.4	612.7	695.2	0.00	0.00	
2,200.0	30.35	61.81	2,026.3	352.3	657.3	745.7	0.00	0.00	
2,300.0	30.35	61.81	2,112.6	376.2	701.8	796.2	0.00	0.00	
2,400.0	30.35	61.81	2,198.9	400.0	746.3	846.8	0.00	0.00	
2,500.0	30.35	61.81	2,285.2	423.9	790.9	897.3	0.00	0.00	
2,600.0	30.35	61.81	2,371.5	447.8	835.4	947.8	0.00	0.00	
2,700.0	30.35	61.81	2,457.8	471.6	879.9	998.4	0.00	0.00	
2,800.0	30.35	61.81	2,544.1	495.5	924.5	1,048.9	0.00	0.00	
2,900.0	30.35	61.81	2,630.4	519.4	969.0	1,099.4	0.00	0.00	
3,000.0	30.35	61.81	2,716.7	543.2	1,013.5	1,149.9	0.00	0.00	
3,100.0	30.35	61.81	2,803.0	567.1	1,058.1	1,200.5	0.00	0.00	
3,200.0	30.35	61.81	2,889.3	591.0	1,102.6	1,251.0	0.00	0.00	
3,300.0	30.35	61.81	2,975.6	614.8	1,147.1	1,301.5	0.00	0.00	
3,400.0	30.35	61.81	3,061.9	638.7	1,191.7	1,352.0	0.00	0.00	
3,500.0	30.35	61.81	3,148.2	662.6	1,236.2	1,402.6	0.00	0.00	
3,593.6	30.35	61.81	3,229.0	684.9	1,277.9	1,449.9	0.00	0.00	Mesa Verde
3,600.0	30.35	61.81	3,234.5	686.5	1,280.7	1,453.1	0.00	0.00	
3,700.0	30.35	61.81	3,320.8	710.3	1,325.2	1,503.6	0.00	0.00	
3,800.0	30.35	61.81	3,407.1	734.2	1,369.8	1,554.1	0.00	0.00	
3,900.0	30.35	61.81	3,493.4	758.1	1,414.3	1,604.7	0.00	0.00	
3,929.7	30.35	61.81	3,519.0	765.2	1,427.6	1,619.7	0.00	0.00	Start Drop -3.00
4,000.0	28.24	61.81	3,580.3	781.4	1,457.9	1,654.1	3.00	-3.00	
4,100.0	25.24	61.81	3,669.6	802.7	1,497.5	1,699.1	3.00	-3.00	
4,200.0	22.24	61.81	3,761.1	821.7	1,533.0	1,739.3	3.00	-3.00	
4,241.8	20.99	61.81	3,800.0	828.9	1,546.6	1,754.7	3.00	-3.00	Williams Fork Fm
4,300.0	19.24	61.81	3,854.6	838.4	1,564.2	1,774.7	3.00	-3.00	
4,400.0	16.24	61.81	3,949.9	852.8	1,591.1	1,805.2	3.00	-3.00	
4,500.0	13.24	61.81	4,046.6	864.8	1,613.5	1,830.6	3.00	-3.00	
4,600.0	10.24	61.81	4,144.5	874.4	1,631.4	1,851.0	3.00	-3.00	
4,614.8	9.80	61.81	4,159.0	875.6	1,633.7	1,853.5	3.00	-3.00	TOG (Inc.= 9.8°)

Cathedral Energy Services

Planning Report

Database:	EDM 5000.1 US Multi Users DB	Local Co-ordinate Reference:	Well Daybreak Federal 19-8BB (PJ-19)
Company:	EnCana Oil & Gas (USA) Inc	TVD Reference:	KBE @ 5449.0ft (Original Well Elev)
Project:	S. Piceance	MD Reference:	KBE @ 5449.0ft (Original Well Elev)
Site:	NWSE S19-T7S-R95W (PJ-19 Pad)	North Reference:	True
Well:	Daybreak Federal 19-8BB (PJ-19)	Survey Calculation Method:	Minimum Curvature
Wellbore:	DD		
Design:	Plan #1		

Planned Survey									
Measured Depth (ft)	Inclination (°)	Azimuth (°)	Vertical Depth (ft)	+N/-S (ft)	+E/-W (ft)	Vertical Section (ft)	Dogleg Rate (°/100ft)	Build Rate (°/100ft)	Comments / Formations
4,700.0	7.24	61.81	4,243.3	881.6	1,644.8	1,866.2	3.00	-3.00	
4,800.0	4.24	61.81	4,342.8	886.3	1,653.6	1,876.2	3.00	-3.00	
4,900.0	1.24	61.81	4,442.7	888.6	1,657.8	1,880.9	3.00	-3.00	
4,941.3	0.00	0.00	4,484.0	888.8	1,658.2	1,881.4	3.00	-3.00	EOD at Inc. = 0° - Daybreak Federal 19-8BB (P
5,000.0	0.00	0.00	4,542.7	888.8	1,658.2	1,881.4	0.00	0.00	
5,100.0	0.00	0.00	4,642.7	888.8	1,658.2	1,881.4	0.00	0.00	
5,200.0	0.00	0.00	4,742.7	888.8	1,658.2	1,881.4	0.00	0.00	
5,300.0	0.00	0.00	4,842.7	888.8	1,658.2	1,881.4	0.00	0.00	
5,400.0	0.00	0.00	4,942.7	888.8	1,658.2	1,881.4	0.00	0.00	
5,500.0	0.00	0.00	5,042.7	888.8	1,658.2	1,881.4	0.00	0.00	
5,600.0	0.00	0.00	5,142.7	888.8	1,658.2	1,881.4	0.00	0.00	
5,700.0	0.00	0.00	5,242.7	888.8	1,658.2	1,881.4	0.00	0.00	
5,800.0	0.00	0.00	5,342.7	888.8	1,658.2	1,881.4	0.00	0.00	
5,900.0	0.00	0.00	5,442.7	888.8	1,658.2	1,881.4	0.00	0.00	
6,000.0	0.00	0.00	5,542.7	888.8	1,658.2	1,881.4	0.00	0.00	
6,100.0	0.00	0.00	5,642.7	888.8	1,658.2	1,881.4	0.00	0.00	
6,106.3	0.00	0.00	5,649.0	888.8	1,658.2	1,881.4	0.00	0.00	Coal Ridge
6,200.0	0.00	0.00	5,742.7	888.8	1,658.2	1,881.4	0.00	0.00	
6,300.0	0.00	0.00	5,842.7	888.8	1,658.2	1,881.4	0.00	0.00	
6,400.0	0.00	0.00	5,942.7	888.8	1,658.2	1,881.4	0.00	0.00	
6,476.3	0.00	0.00	6,019.0	888.8	1,658.2	1,881.4	0.00	0.00	Rollins
6,500.0	0.00	0.00	6,042.7	888.8	1,658.2	1,881.4	0.00	0.00	
6,511.3	0.00	0.00	6,054.0	888.8	1,658.2	1,881.4	0.00	0.00	TD at 6511' MD - Daybreak Federal 19-8BB (P
6,600.0	0.00	0.00	6,142.7	888.8	1,658.2	1,881.4	0.00	0.00	
6,611.3	0.00	0.00	6,154.0	888.8	1,658.2	1,881.4	0.00	0.00	Permit TD at 6611' MD

Targets									
Target Name	Dip Angle (°)	Dip Dir. (°)	TVD (ft)	+N/-S (ft)	+E/-W (ft)	Northing (ft)	Easting (ft)	Latitude	Longitude
- hit/miss target									
- Shape									
Daybreak Federal 19-8B	0.00	0.00	6,054.0	888.8	1,658.2	1,589,215.78	2,284,694.05	39.423780	-108.032490
- plan hits target center									
- Circle (radius 25.0)									
Daybreak Federal 19-8B	0.00	0.00	4,484.0	888.8	1,658.2	1,589,215.78	2,284,694.05	39.423780	-108.032490
- plan hits target center									
- Point									

Casing Points					
Measured Depth (ft)	Vertical Depth (ft)	Name	Casing Diameter (in)	Hole Diameter (in)	
1,200.0	1,156.2	Surface Casing	5.500	6.000	

Cathedral Energy Services

Planning Report

Database:	EDM 5000.1 US Multi Users DB	Local Co-ordinate Reference:	Well Daybreak Federal 19-8BB (PJ-19)
Company:	EnCana Oil & Gas (USA) Inc	TVD Reference:	KBE @ 5449.0ft (Original Well Elev)
Project:	S. Piceance	MD Reference:	KBE @ 5449.0ft (Original Well Elev)
Site:	NWSE S19-T7S-R95W (PJ-19 Pad)	North Reference:	True
Well:	Daybreak Federal 19-8BB (PJ-19)	Survey Calculation Method:	Minimum Curvature
Wellbore:	DD		
Design:	Plan #1		

Formations

Measured Depth (ft)	Vertical Depth (ft)	Name	Lithology	Dip (°)	Dip Direction (°)
3,593.6	3,229.0	Mesa Verde		0.00	
4,241.8	3,800.0	Williams Fork Fm		0.00	
4,614.8	4,159.0	TOG (Inc. = 9.8°)		0.00	
6,106.3	5,649.0	Coal Ridge		0.00	
6,476.3	6,019.0	Rollins		0.00	

Plan Annotations

Measured Depth (ft)	Vertical Depth (ft)	Local Coordinates		Comment
		+N/-S (ft)	+E/-W (ft)	
200.0	200.0	0.0	0.0	KOP = 200' MD
1,100.0	1,067.1	98.3	183.5	Start 300' hold at 1100' MD
1,400.0	1,334.4	162.7	303.5	End 300' hold at 1400' MD
1,511.6	1,432.3	188.0	350.7	EOB at Inc. = 30.35°
3,929.7	3,519.0	765.2	1,427.6	Start Drop -3.00
4,941.3	4,484.0	888.8	1,658.2	EOD at Inc. = 0°
6,511.3	6,054.0	888.8	1,658.2	TD at 6511' MD
6,611.3	6,154.0	888.8	1,658.2	Permit TD at 6611' MD

EnCana Oil & Gas (USA) Inc

S. Piceance

NWSE S19-T7S-R95W (PJ-19 Pad)

Daybreak Federal 19-8BB (PJ-19)

DD

Plan #1

Anticollision Report

22 March, 2010

Cathedral Energy Services

Anticollision Report

Company:	EnCana Oil & Gas (USA) Inc	Local Co-ordinate Reference:	Well Daybreak Federal 19-8BB (PJ-19)
Project:	S. Piceance	TVD Reference:	KBE @ 5449.0ft (Original Well Elev)
Reference Site:	NWSE S19-T7S-R95W (PJ-19 Pad)	MD Reference:	KBE @ 5449.0ft (Original Well Elev)
Site Error:	0.0ft	North Reference:	True
Reference Well:	Daybreak Federal 19-8BB (PJ-19)	Survey Calculation Method:	Minimum Curvature
Well Error:	0.0ft	Output errors are at	2.00 sigma
Reference Wellbore	DD	Database:	EDM 5000.1 US Multi Users DB
Reference Design:	Plan #1	Offset TVD Reference:	Offset Datum

Reference	Plan #1
Filter type:	NO GLOBAL FILTER: Using user defined selection & filtering criteria
Interpolation Method:	Stations
Depth Range:	0.0 to 99,999.0ft
Results Limited by:	Maximum center-center distance of 100.0ft
Warning Levels Evaluated at:	2.00 Sigma
Error Model:	Systematic Ellipse
Scan Method:	Closest Approach 3D
Error Surface:	Elliptical Conic

Survey Tool Program	Date	3/22/2010
From (ft)	To (ft)	Survey (Wellbore)
0.0	6,610.9	Plan #1 (DD)
		Tool Name
		MWD
		Description
		Geolink MWD

Cathedral Energy Services

Anticollision Report

Company:	EnCana Oil & Gas (USA) Inc	Local Co-ordinate Reference:	Well Daybreak Federal 19-8BB (PJ-19)
Project:	S. Piceance	TVD Reference:	KBE @ 5449.0ft (Original Well Elev)
Reference Site:	NWSE S19-T7S-R95W (PJ-19 Pad)	MD Reference:	KBE @ 5449.0ft (Original Well Elev)
Site Error:	0.0ft	North Reference:	True
Reference Well:	Daybreak Federal 19-8BB (PJ-19)	Survey Calculation Method:	Minimum Curvature
Well Error:	0.0ft	Output errors are at	2.00 sigma
Reference Wellbore	DD	Database:	EDM 5000.1 US Multi Users DB
Reference Design:	Plan #1	Offset TVD Reference:	Offset Datum

Summary

Site Name	Reference Measured Depth (ft)	Offset Measured Depth (ft)	Distance Between Centres (ft)	Distance Between Ellipses (ft)	Separation Factor	Warning
NESE S19-T7S-R95W (PI-19 PAD)						
Federal 19-10BB - DD - DD						Out of range
Federal 19-10BB - DD - Plan #2						Out of range
Federal 19-9 - DD - DD						Out of range
Federal 19-9 - DD - Plan #3						Out of range
Federal 20-5 - DD - DD						Out of range
Federal 20-5 - DD - Plan #3						Out of range
NWSE S19-T7S-R95W (PJ-19 Pad)						
Daybreak Federal 19-10A (PJ-19) - DD - Plan #1	200.0	200.0	25.4	24.8	40.920	CC, ES
Daybreak Federal 19-10A (PJ-19) - DD - Plan #1	700.0	700.4	57.8	54.4	17.194	SF
Daybreak Federal 19-2 (PJ-19) - DD - Plan #1	200.0	200.0	75.7	75.1	121.794	CC, ES
Daybreak Federal 19-2 (PJ-19) - DD - Plan #1	500.0	503.0	91.0	89.2	48.988	SF
Daybreak Federal 19-2D (PJ-19) - DD - Plan #1	200.0	200.0	65.9	65.3	106.030	CC, ES
Daybreak Federal 19-2D (PJ-19) - DD - Plan #1	500.0	496.5	99.5	97.8	57.087	SF
Daybreak Federal 19-3BB (PJ-19) - DD - Plan #1	200.0	200.0	83.1	82.5	133.756	CC, ES
Daybreak Federal 19-3BB (PJ-19) - DD - Plan #1	400.0	399.3	93.6	92.3	70.740	SF
Daybreak Federal 19-6 (PJ-19) - DD - Plan #1						Out of range
Daybreak Federal 19-6BB (PJ 19) - DD - Plan #1						Out of range
Daybreak Federal 19-6C (PJ-19) - DD - Plan #1	200.0	200.0	93.0	92.4	149.684	CC, ES
Daybreak Federal 19-6C (PJ-19) - DD - Plan #1	300.0	298.9	96.1	95.1	98.366	SF
Daybreak Federal 19-6D (PJ-19) - DD - Plan #1						Out of range
Daybreak Federal 19-7 (PJ-19) - DD - Plan #1	100.0	100.0	43.0	42.7	157.918	CC
Daybreak Federal 19-7 (PJ-19) - DD - Plan #1	200.0	200.0	43.0	42.4	69.200	ES
Daybreak Federal 19-7 (PJ-19) - DD - Plan #1	700.0	700.7	82.6	79.3	24.848	SF
Daybreak Federal 19-7BB (PJ-19) - DD - Plan #1	200.0	200.0	57.5	56.9	92.618	CC, ES
Daybreak Federal 19-7BB (PJ-19) - DD - Plan #1	600.0	599.5	97.0	94.9	48.074	SF
Daybreak Federal 19-7C (PJ-19) - DD - Plan #1	200.0	200.0	50.2	49.6	80.772	CC, ES
Daybreak Federal 19-7C (PJ-19) - DD - Plan #1	500.0	498.8	73.4	71.7	44.215	SF
Daybreak Federal 19-8 (PJ-19) - DD - Plan #1	200.0	200.0	11.2	10.6	17.986	CC, ES
Daybreak Federal 19-8 (PJ-19) - DD - Plan #1	1,300.0	1,295.3	93.0	80.6	7.535	SF
Daybreak Federal 19-8C (PJ-19 Pad) - DD - Plan #1	200.0	200.0	32.9	32.3	53.015	CC
Daybreak Federal 19-8C (PJ-19 Pad) - DD - Plan #1	300.0	301.5	33.3	32.3	34.095	ES
Daybreak Federal 19-8C (PJ-19 Pad) - DD - Plan #1	1,100.0	1,106.1	94.9	86.2	10.955	SF
Daybreak Federal 19-8D (PJ-19) - DD - Plan #1	200.0	200.0	14.6	14.0	23.477	CC
Daybreak Federal 19-8D (PJ-19) - DD - Plan #1	300.0	300.7	14.7	13.7	15.103	ES
Daybreak Federal 19-8D (PJ-19) - DD - Plan #1	1,300.0	1,304.8	50.3	37.5	3.921	SF

Cathedral Energy Services

Anticollision Report

Company:	EnCana Oil & Gas (USA) Inc	Local Co-ordinate Reference:	Well Daybreak Federal 19-8BB (PJ-19)
Project:	S. Piceance	TVD Reference:	KBE @ 5449.0ft (Original Well Elev)
Reference Site:	NWSE S19-T7S-R95W (PJ-19 Pad)	MD Reference:	KBE @ 5449.0ft (Original Well Elev)
Site Error:	0.0ft	North Reference:	True
Reference Well:	Daybreak Federal 19-8BB (PJ-19)	Survey Calculation Method:	Minimum Curvature
Well Error:	0.0ft	Output errors are at	2.00 sigma
Reference Wellbore	DD	Database:	EDM 5000.1 US Multi Users DB
Reference Design:	Plan #1	Offset TVD Reference:	Offset Datum

Offset Design NWSE S19-T7S-R95W (PJ-19 Pad) - Daybreak Federal 19-10A (PJ-19) - DD - Plan #1													Offset Site Error: 0.0 ft
Survey Program: 0-MWD													Offset Well Error: 0.0 ft
Reference		Offset		Semi Major Axis			Distance						Warning
Measured Depth (ft)	Vertical Depth (ft)	Measured Depth (ft)	Vertical Depth (ft)	Reference (ft)	Offset (ft)	Highside Toolface (°)	Offset Wellbore Centre +N/-S (ft)	+E/-W (ft)	Between Centres (ft)	Between Ellipses (ft)	Total Uncertainty Axis	Separation Factor	
0.0	0.0	0.0	0.0	0.0	0.0	-90.01	0.0	-25.4	25.4				
100.0	100.0	100.0	100.0	0.1	0.1	-90.01	0.0	-25.4	25.4	25.2	0.27	93.381	
200.0	200.0	200.0	200.0	0.3	0.3	-90.01	0.0	-25.4	25.4	24.8	0.62	40.920 CC, ES	
300.0	300.0	300.6	300.6	0.5	0.5	-149.48	2.3	-24.1	26.5	25.5	0.98	27.015	
400.0	399.6	401.1	400.7	0.7	0.7	-143.48	9.3	-20.3	29.9	28.5	1.39	21.515	
500.0	498.8	501.3	500.1	1.0	1.0	-136.13	20.8	-14.0	36.0	34.1	1.91	18.896	
600.0	597.1	601.2	598.2	1.4	1.4	-129.32	36.7	-5.1	45.3	42.7	2.59	17.481	
700.0	694.3	700.4	695.2	1.8	1.8	-126.06	55.1	5.0	57.8	54.4	3.36	17.194 SF	
800.0	790.2	799.1	791.7	2.4	2.1	-127.18	73.4	15.1	73.4	69.2	4.16	17.632	
900.0	884.4	897.2	887.5	3.0	2.5	-130.30	91.6	25.2	92.3	87.3	4.96	18.596	

Cathedral Energy Services

Anticollision Report

Company:	EnCana Oil & Gas (USA) Inc	Local Co-ordinate Reference:	Well Daybreak Federal 19-8BB (PJ-19)
Project:	S. Piceance	TVD Reference:	KBE @ 5449.0ft (Original Well Elev)
Reference Site:	NWSE S19-T7S-R95W (PJ-19 Pad)	MD Reference:	KBE @ 5449.0ft (Original Well Elev)
Site Error:	0.0ft	North Reference:	True
Reference Well:	Daybreak Federal 19-8BB (PJ-19)	Survey Calculation Method:	Minimum Curvature
Well Error:	0.0ft	Output errors are at	2.00 sigma
Reference Wellbore	DD	Database:	EDM 5000.1 US Multi Users DB
Reference Design:	Plan #1	Offset TVD Reference:	Offset Datum

Offset Design NWSE S19-T7S-R95W (PJ-19 Pad) - Daybreak Federal 19-2 (PJ-19) - DD - Plan #1													Offset Site Error: 0.0 ft
Survey Program: 0-MWD													Offset Well Error: 0.0 ft
Reference		Offset		Semi Major Axis		Distance							
Measured Depth (ft)	Vertical Depth (ft)	Measured Depth (ft)	Vertical Depth (ft)	Reference (ft)	Offset (ft)	Highside Toolface (°)	Offset Wellbore Centre +N/-S (ft)	+E/-W (ft)	Between Centres (ft)	Between Ellipses (ft)	Total Uncertainty Axis	Separation Factor	Warning
0.0	0.0	0.0	0.0	0.0	0.0	-103.93	-18.2	-73.5	75.7				
100.0	100.0	100.0	100.0	0.1	0.1	-103.93	-18.2	-73.5	75.7	75.4	0.27	277.940	
200.0	200.0	200.0	200.0	0.3	0.3	-103.93	-18.2	-73.5	75.7	75.1	0.62	121.794 CC, ES	
300.0	300.0	301.4	301.4	0.5	0.5	-164.36	-15.5	-73.1	77.2	76.3	0.98	78.741	
400.0	399.6	402.5	402.2	0.7	0.7	-160.55	-7.6	-71.9	82.2	80.8	1.38	59.562	
500.0	498.8	503.0	501.7	1.0	1.0	-155.18	5.5	-70.1	91.0	89.2	1.86	48.988 SF	

Cathedral Energy Services

Anticollision Report

Company:	EnCana Oil & Gas (USA) Inc	Local Co-ordinate Reference:	Well Daybreak Federal 19-8BB (PJ-19)
Project:	S. Piceance	TVD Reference:	KBE @ 5449.0ft (Original Well Elev)
Reference Site:	NWSE S19-T7S-R95W (PJ-19 Pad)	MD Reference:	KBE @ 5449.0ft (Original Well Elev)
Site Error:	0.0ft	North Reference:	True
Reference Well:	Daybreak Federal 19-8BB (PJ-19)	Survey Calculation Method:	Minimum Curvature
Well Error:	0.0ft	Output errors are at	2.00 sigma
Reference Wellbore	DD	Database:	EDM 5000.1 US Multi Users DB
Reference Design:	Plan #1	Offset TVD Reference:	Offset Datum

Offset Design NWSE S19-T7S-R95W (PJ-19 Pad) - Daybreak Federal 19-2D (PJ-19) - DD - Plan #1													Offset Site Error:	0.0 ft	
Survey Program: 0-MWD														Offset Well Error:	0.0 ft
Reference		Offset		Semi Major Axis			Distance						Warning		
Measured Depth	Vertical Depth	Measured Depth	Vertical Depth	Reference	Offset	Highside Toolface	Offset Wellbore Centre		Between Centres	Between Ellipses	Total Uncertainty	Separation			
(ft)	(ft)	(ft)	(ft)	(ft)	(ft)	(°)	+N/-S (ft)	+E/-W (ft)	(ft)	(ft)	Axis	Factor			
0.0	0.0	0.0	0.0	0.0	0.0	-109.37	-21.9	-62.2	65.9						
100.0	100.0	100.0	100.0	0.1	0.1	-109.37	-21.9	-62.2	65.9	65.6	0.27	241.966			
200.0	200.0	200.0	200.0	0.3	0.3	-109.37	-21.9	-62.2	65.9	65.3	0.62	106.030 CC, ES			
300.0	300.0	297.6	297.6	0.5	0.5	-169.93	-20.6	-64.3	70.1	69.2	0.97	72.295			
400.0	399.6	395.6	395.2	0.7	0.7	-166.88	-16.8	-70.6	82.8	81.5	1.33	62.089			
500.0	498.8	496.5	495.6	1.0	0.9	-162.82	-8.4	-76.8	99.5	97.8	1.74	57.087 SF			

Cathedral Energy Services

Anticollision Report

Company:	EnCana Oil & Gas (USA) Inc	Local Co-ordinate Reference:	Well Daybreak Federal 19-8BB (PJ-19)
Project:	S. Piceance	TVD Reference:	KBE @ 5449.0ft (Original Well Elev)
Reference Site:	NWSE S19-T7S-R95W (PJ-19 Pad)	MD Reference:	KBE @ 5449.0ft (Original Well Elev)
Site Error:	0.0ft	North Reference:	True
Reference Well:	Daybreak Federal 19-8BB (PJ-19)	Survey Calculation Method:	Minimum Curvature
Well Error:	0.0ft	Output errors are at	2.00 sigma
Reference Wellbore	DD	Database:	EDM 5000.1 US Multi Users DB
Reference Design:	Plan #1	Offset TVD Reference:	Offset Datum

Offset Design NWSE S19-T7S-R95W (PJ-19 Pad) - Daybreak Federal 19-3BB (PJ-19) - DD - Plan #1													Offset Site Error: 0.0 ft
Survey Program: 0-MWD													Offset Well Error: 0.0 ft
Reference		Offset		Semi Major Axis		Distance							
Measured Depth (ft)	Vertical Depth (ft)	Measured Depth (ft)	Vertical Depth (ft)	Reference (ft)	Offset (ft)	Highside Toolface (°)	Offset Wellbore Centre +N/-S (ft)	+E/-W (ft)	Between Centres (ft)	Between Ellipses (ft)	Total Uncertainty Axis	Separation Factor	Warning
0.0	0.0	0.0	0.0	0.0	0.0	-107.87	-25.5	-79.1	83.1				
100.0	100.0	100.0	100.0	0.1	0.1	-107.87	-25.5	-79.1	83.1	82.8	0.27	305.238	
200.0	200.0	200.0	200.0	0.3	0.3	-107.87	-25.5	-79.1	83.1	82.5	0.62	133.756 CC, ES	
300.0	300.0	300.0	300.0	0.5	0.5	-169.98	-25.5	-79.1	85.7	84.7	0.97	88.350	
400.0	399.6	399.3	399.3	0.7	0.7	-169.18	-23.1	-80.1	93.6	92.3	1.32	70.740 SF	

Cathedral Energy Services

Anticollision Report

Company:	EnCana Oil & Gas (USA) Inc	Local Co-ordinate Reference:	Well Daybreak Federal 19-8BB (PJ-19)
Project:	S. Piceance	TVD Reference:	KBE @ 5449.0ft (Original Well Elev)
Reference Site:	NWSE S19-T7S-R95W (PJ-19 Pad)	MD Reference:	KBE @ 5449.0ft (Original Well Elev)
Site Error:	0.0ft	North Reference:	True
Reference Well:	Daybreak Federal 19-8BB (PJ-19)	Survey Calculation Method:	Minimum Curvature
Well Error:	0.0ft	Output errors are at	2.00 sigma
Reference Wellbore	DD	Database:	EDM 5000.1 US Multi Users DB
Reference Design:	Plan #1	Offset TVD Reference:	Offset Datum

Offset Design NWSE S19-T7S-R95W (PJ-19 Pad) - Daybreak Federal 19-6C (PJ-19) - DD - Plan #1													Offset Site Error:		0.0 ft	
Survey Program: 0-MWD													Offset Well Error:		0.0 ft	
Reference		Offset		Semi Major Axis			Distance							Warning		
Measured Depth	Vertical Depth	Measured Depth	Vertical Depth	Reference	Offset	Highside Toolface	Offset Wellbore Centre		Between Centres	Between Ellipses	Total Uncertainty	Separation Factor				
(ft)	(ft)	(ft)	(ft)	(ft)	(ft)	(°)	+N/-S (ft)	+E/-W (ft)	(ft)	(ft)	Axis					
0.0	0.0	0.0	0.0	0.0	0.0	-103.59	-21.9	-90.4	93.0							
100.0	100.0	100.0	100.0	0.1	0.1	-103.59	-21.9	-90.4	93.0	92.7	0.27	341.586				
200.0	200.0	200.0	200.0	0.3	0.3	-103.59	-21.9	-90.4	93.0	92.4	0.62	149.684 CC, ES				
300.0	300.0	298.9	298.9	0.5	0.5	-164.26	-19.5	-91.5	96.1	95.1	0.98	98.366 SF				

Cathedral Energy Services

Anticollision Report

Company:	EnCana Oil & Gas (USA) Inc	Local Co-ordinate Reference:	Well Daybreak Federal 19-8BB (PJ-19)
Project:	S. Piceance	TVD Reference:	KBE @ 5449.0ft (Original Well Elev)
Reference Site:	NWSE S19-T7S-R95W (PJ-19 Pad)	MD Reference:	KBE @ 5449.0ft (Original Well Elev)
Site Error:	0.0ft	North Reference:	True
Reference Well:	Daybreak Federal 19-8BB (PJ-19)	Survey Calculation Method:	Minimum Curvature
Well Error:	0.0ft	Output errors are at	2.00 sigma
Reference Wellbore	DD	Database:	EDM 5000.1 US Multi Users DB
Reference Design:	Plan #1	Offset TVD Reference:	Offset Datum

Offset Design NWSE S19-T7S-R95W (PJ-19 Pad) - Daybreak Federal 19-7 (PJ-19) - DD - Plan #1													Offset Site Error:	0.0 ft
Survey Program: 0-MWD													Offset Well Error:	0.0 ft
Reference		Offset		Semi Major Axis			Distance						Warning	
Measured Depth (ft)	Vertical Depth (ft)	Measured Depth (ft)	Vertical Depth (ft)	Reference (ft)	Offset (ft)	Highside Toolface (°)	Offset Wellbore Centre +N/-S (ft)	+E/-W (ft)	Between Centres (ft)	Between Ellipses (ft)	Total Uncertainty Axis	Separation Factor		
0.0	0.0	0.0	0.0	0.0	0.0	-99.75	-7.3	-42.4	43.0					
100.0	100.0	100.0	100.0	0.1	0.1	-99.75	-7.3	-42.4	43.0	42.7	0.27	157.918 CC		
200.0	200.0	200.0	200.0	0.3	0.3	-99.75	-7.3	-42.4	43.0	42.4	0.62	69.200 ES		
300.0	300.0	301.0	301.0	0.5	0.5	-159.59	-4.8	-41.5	44.3	43.3	0.98	45.164		
400.0	399.6	401.8	401.5	0.7	0.7	-154.30	2.8	-39.0	48.3	46.9	1.38	35.002		
500.0	498.8	502.2	500.9	1.0	1.0	-147.31	15.3	-34.8	55.7	53.9	1.87	29.741		
600.0	597.1	601.9	598.9	1.4	1.4	-140.26	32.7	-29.0	67.1	64.6	2.51	26.692		
700.0	694.3	700.7	695.0	1.8	1.8	-134.11	54.6	-21.7	82.6	79.3	3.32	24.848 SF		

Cathedral Energy Services

Anticollision Report

Company:	EnCana Oil & Gas (USA) Inc	Local Co-ordinate Reference:	Well Daybreak Federal 19-8BB (PJ-19)
Project:	S. Piceance	TVD Reference:	KBE @ 5449.0ft (Original Well Elev)
Reference Site:	NWSE S19-T7S-R95W (PJ-19 Pad)	MD Reference:	KBE @ 5449.0ft (Original Well Elev)
Site Error:	0.0ft	North Reference:	True
Reference Well:	Daybreak Federal 19-8BB (PJ-19)	Survey Calculation Method:	Minimum Curvature
Well Error:	0.0ft	Output errors are at	2.00 sigma
Reference Wellbore	DD	Database:	EDM 5000.1 US Multi Users DB
Reference Design:	Plan #1	Offset TVD Reference:	Offset Datum

Offset Design NWSE S19-T7S-R95W (PJ-19 Pad) - Daybreak Federal 19-7BB (PJ-19) - DD - Plan #1													Offset Site Error: 0.0 ft			
Survey Program: 0-MWD															Offset Well Error: 0.0 ft	
Reference		Offset		Semi Major Axis			Distance							Warning		
Measured Depth (ft)	Vertical Depth (ft)	Measured Depth (ft)	Vertical Depth (ft)	Reference (ft)	Offset (ft)	Highside Toolface (°)	Offset Wellbore Centre +N/-S (ft) +E/-W (ft)		Between Centres (ft)	Between Ellipses (ft)	Total Uncertainty Axis	Separation Factor				
0.0	0.0	0.0	0.0	0.0	0.0	-100.95	-10.9	-56.5	57.5							
100.0	100.0	100.0	100.0	0.1	0.1	-100.95	-10.9	-56.5	57.5	57.3	0.27	211.359				
200.0	200.0	200.0	200.0	0.3	0.3	-100.95	-10.9	-56.5	57.5	56.9	0.62	92.618 CC, ES				
300.0	300.0	300.0	300.0	0.5	0.5	-163.47	-10.9	-56.5	60.1	59.1	0.97	61.890				
400.0	399.6	399.6	399.6	0.7	0.7	-165.31	-10.9	-56.5	67.6	66.3	1.32	51.261				
500.0	498.8	498.8	498.8	1.0	0.8	-167.59	-10.9	-56.5	80.3	78.6	1.67	48.229				
600.0	597.1	599.5	599.5	1.4	1.0	-168.48	-8.4	-56.0	97.0	94.9	2.02	48.074 SF				

Cathedral Energy Services

Anticollision Report

Company:	EnCana Oil & Gas (USA) Inc	Local Co-ordinate Reference:	Well Daybreak Federal 19-8BB (PJ-19)
Project:	S. Piceance	TVD Reference:	KBE @ 5449.0ft (Original Well Elev)
Reference Site:	NWSE S19-T7S-R95W (PJ-19 Pad)	MD Reference:	KBE @ 5449.0ft (Original Well Elev)
Site Error:	0.0ft	North Reference:	True
Reference Well:	Daybreak Federal 19-8BB (PJ-19)	Survey Calculation Method:	Minimum Curvature
Well Error:	0.0ft	Output errors are at	2.00 sigma
Reference Wellbore	DD	Database:	EDM 5000.1 US Multi Users DB
Reference Design:	Plan #1	Offset TVD Reference:	Offset Datum

Offset Design NWSE S19-T7S-R95W (PJ-19 Pad) - Daybreak Federal 19-7C (PJ-19) - DD - Plan #1													Offset Site Error: 0.0 ft			
Survey Program: 0-MWD															Offset Well Error: 0.0 ft	
Reference		Offset		Semi Major Axis			Distance							Warning		
Measured Depth (ft)	Vertical Depth (ft)	Measured Depth (ft)	Vertical Depth (ft)	Reference (ft)	Offset (ft)	Highside Toolface (°)	Offset Wellbore Centre +N/-S (ft) +E/-W (ft)		Between Centres (ft)	Between Ellipses (ft)	Total Uncertainty Axis	Separation Factor				
0.0	0.0	0.0	0.0	0.0	0.0	-106.88	-14.6	-48.0	50.2							
100.0	100.0	100.0	100.0	0.1	0.1	-106.88	-14.6	-48.0	50.2	49.9	0.27	184.325				
200.0	200.0	200.0	200.0	0.3	0.3	-106.88	-14.6	-48.0	50.2	49.6	0.62	80.772 CC, ES				
300.0	300.0	300.0	300.0	0.5	0.5	-169.23	-14.6	-48.0	52.8	51.8	0.97	54.394				
400.0	399.6	399.6	399.6	0.7	0.7	-170.58	-14.6	-48.0	60.5	59.2	1.32	45.935				
500.0	498.8	498.8	498.8	1.0	0.8	-172.20	-14.6	-48.0	73.4	71.7	1.66	44.215 SF				
600.0	597.1	597.1	597.1	1.4	1.0	-173.68	-14.6	-48.0	91.5	89.5	2.00	45.805				

Cathedral Energy Services

Anticollision Report

Company:	EnCana Oil & Gas (USA) Inc	Local Co-ordinate Reference:	Well Daybreak Federal 19-8BB (PJ-19)
Project:	S. Piceance	TVD Reference:	KBE @ 5449.0ft (Original Well Elev)
Reference Site:	NWSE S19-T7S-R95W (PJ-19 Pad)	MD Reference:	KBE @ 5449.0ft (Original Well Elev)
Site Error:	0.0ft	North Reference:	True
Reference Well:	Daybreak Federal 19-8BB (PJ-19)	Survey Calculation Method:	Minimum Curvature
Well Error:	0.0ft	Output errors are at	2.00 sigma
Reference Wellbore	DD	Database:	EDM 5000.1 US Multi Users DB
Reference Design:	Plan #1	Offset TVD Reference:	Offset Datum

Offset Design NWSE S19-T7S-R95W (PJ-19 Pad) - Daybreak Federal 19-8 (PJ-19) - DD - Plan #1												Offset Site Error:	0.0 ft
Survey Program: 0-MWD												Offset Well Error:	0.0 ft
Reference		Offset		Semi Major Axis			Distance						Warning
Measured Depth (ft)	Vertical Depth (ft)	Measured Depth (ft)	Vertical Depth (ft)	Reference (ft)	Offset (ft)	Highside Toolface (°)	Offset Wellbore Centre +N/-S (ft)	+E/-W (ft)	Between Centres (ft)	Between Ellipses (ft)	Total Uncertainty Axis	Separation Factor	
0.0	0.0	0.0	0.0	0.0	0.0	-49.32	7.3	-8.5	11.2				
100.0	100.0	100.0	100.0	0.1	0.1	-49.32	7.3	-8.5	11.2	10.9	0.27	41.045	
200.0	200.0	200.0	200.0	0.3	0.3	-49.32	7.3	-8.5	11.2	10.6	0.62	17.986 CC, ES	
300.0	300.0	300.0	300.0	0.5	0.5	-110.31	9.1	-6.6	11.9	10.9	0.99	12.040	
400.0	399.6	400.1	399.7	0.7	0.7	-108.34	14.6	-0.9	14.0	12.6	1.42	9.828	
500.0	498.8	500.0	498.8	1.0	1.0	-106.10	23.6	8.4	17.5	15.5	1.99	8.830	
600.0	597.1	599.9	597.0	1.4	1.4	-104.13	36.3	21.5	22.5	19.8	2.71	8.316	
700.0	694.3	699.6	694.0	1.8	1.8	-102.56	52.4	38.3	28.9	25.3	3.60	8.022	
800.0	790.2	799.2	789.4	2.4	2.4	-101.34	72.0	58.6	36.7	32.0	4.68	7.839	
900.0	884.4	898.7	883.2	3.0	3.0	-100.39	95.1	82.4	45.8	39.9	5.94	7.714	
1,000.0	976.8	997.9	974.9	3.8	3.7	-99.62	121.4	109.7	56.3	48.9	7.38	7.623	
1,100.0	1,067.1	1,096.9	1,064.3	4.6	4.5	-98.98	150.9	140.3	68.1	59.1	9.02	7.551	
1,200.0	1,156.2	1,196.1	1,152.7	5.4	5.3	-98.69	182.2	172.7	80.5	69.9	10.67	7.546	
1,300.0	1,245.3	1,295.3	1,241.1	6.3	6.2	-98.47	213.5	205.1	93.0	80.6	12.34	7.535 SF	

Cathedral Energy Services

Anticollision Report

Company:	EnCana Oil & Gas (USA) Inc	Local Co-ordinate Reference:	Well Daybreak Federal 19-8BB (PJ-19)
Project:	S. Piceance	TVD Reference:	KBE @ 5449.0ft (Original Well Elev)
Reference Site:	NWSE S19-T7S-R95W (PJ-19 Pad)	MD Reference:	KBE @ 5449.0ft (Original Well Elev)
Site Error:	0.0ft	North Reference:	True
Reference Well:	Daybreak Federal 19-8BB (PJ-19)	Survey Calculation Method:	Minimum Curvature
Well Error:	0.0ft	Output errors are at	2.00 sigma
Reference Wellbore	DD	Database:	EDM 5000.1 US Multi Users DB
Reference Design:	Plan #1	Offset TVD Reference:	Offset Datum

Offset Design NWSE S19-T7S-R95W (PJ-19 Pad) - Daybreak Federal 19-8C (PJ-19 Pad) - DD - Plan #1													Offset Site Error:	0.0 ft
Survey Program: 0-MWD													Offset Well Error:	0.0 ft
Reference		Offset		Semi Major Axis			Distance						Warning	
Measured Depth (ft)	Vertical Depth (ft)	Measured Depth (ft)	Vertical Depth (ft)	Reference (ft)	Offset (ft)	Highside Toolface (°)	Offset Wellbore Centre +N/-S (ft)	+E/-W (ft)	Between Centres (ft)	Between Ellipses (ft)	Total Uncertainty Axis	Separation Factor		
0.0	0.0	0.0	0.0	0.0	0.0	-109.37	-10.9	-31.1	32.9					
100.0	100.0	100.0	100.0	0.1	0.1	-109.37	-10.9	-31.1	32.9	32.7	0.27	120.983		
200.0	200.0	200.0	200.0	0.3	0.3	-109.37	-10.9	-31.1	32.9	32.3	0.62	53.015 CC		
300.0	300.0	301.5	301.4	0.5	0.5	-169.52	-8.9	-29.3	33.3	32.3	0.98	34.095 ES		
400.0	399.6	402.9	402.5	0.7	0.7	-164.72	-2.7	-24.2	34.4	33.0	1.35	25.496		
500.0	498.8	504.2	502.9	1.0	1.0	-157.49	7.6	-15.5	36.7	34.9	1.78	20.559		
600.0	597.1	605.3	602.3	1.4	1.4	-148.95	21.9	-3.5	40.7	38.3	2.37	17.209		
700.0	694.3	706.2	700.3	1.8	1.8	-140.39	40.2	11.8	46.9	43.7	3.17	14.792		
800.0	790.2	806.8	796.6	2.4	2.4	-132.72	62.3	30.4	55.5	51.2	4.22	13.129		
900.0	884.4	907.0	890.9	3.0	3.0	-126.30	88.2	52.1	66.4	60.9	5.51	12.055		
1,000.0	976.8	1,006.8	983.0	3.8	3.8	-121.12	117.7	76.8	79.6	72.6	6.99	11.381		
1,100.0	1,067.1	1,106.1	1,072.5	4.6	4.6	-116.97	150.7	104.5	94.9	86.2	8.66	10.955 SF		

Cathedral Energy Services

Anticollision Report

Company:	EnCana Oil & Gas (USA) Inc	Local Co-ordinate Reference:	Well Daybreak Federal 19-8BB (PJ-19)
Project:	S. Piceance	TVD Reference:	KBE @ 5449.0ft (Original Well Elev)
Reference Site:	NWSE S19-T7S-R95W (PJ-19 Pad)	MD Reference:	KBE @ 5449.0ft (Original Well Elev)
Site Error:	0.0ft	North Reference:	True
Reference Well:	Daybreak Federal 19-8BB (PJ-19)	Survey Calculation Method:	Minimum Curvature
Well Error:	0.0ft	Output errors are at	2.00 sigma
Reference Wellbore	DD	Database:	EDM 5000.1 US Multi Users DB
Reference Design:	Plan #1	Offset TVD Reference:	Offset Datum

Offset Design NWSE S19-T7S-R95W (PJ-19 Pad) - Daybreak Federal 19-8D (PJ-19) - DD - Plan #1													Offset Site Error:	0.0 ft
Survey Program:		0-MWD											Offset Well Error:	0.0 ft
Reference		Offset		Semi Major Axis			Distance							Warning
Measured Depth (ft)	Vertical Depth (ft)	Measured Depth (ft)	Vertical Depth (ft)	Reference (ft)	Offset (ft)	Highside Toolface (°)	Offset Wellbore Centre +N/-S (ft)	+E/-W (ft)	Between Centres (ft)	Between Ellipses (ft)	Total Uncertainty Axis	Separation Factor		
0.0	0.0	0.0	0.0	0.0	0.0	-104.46	-3.6	-14.1	14.6					
100.0	100.0	100.0	100.0	0.1	0.1	-104.46	-3.6	-14.1	14.6	14.3	0.27	53.575		
200.0	200.0	200.0	200.0	0.3	0.3	-104.46	-3.6	-14.1	14.6	14.0	0.62	23.477	CC	
300.0	300.0	300.7	300.7	0.5	0.5	-164.78	-2.1	-12.0	14.7	13.7	0.97	15.103	ES	
400.0	399.6	401.4	401.0	0.7	0.7	-160.44	2.7	-5.6	15.1	13.7	1.34	11.265		
500.0	498.8	502.1	500.8	1.0	1.0	-153.77	10.6	5.0	15.9	14.1	1.76	9.033		
600.0	597.1	602.7	599.7	1.4	1.4	-145.66	21.7	19.8	17.4	15.0	2.32	7.478		
700.0	694.3	703.3	697.5	1.8	1.8	-137.23	35.8	38.7	19.6	16.5	3.11	6.309		
800.0	790.2	803.9	793.9	2.4	2.4	-129.43	53.1	61.7	22.8	18.7	4.17	5.475		
900.0	884.4	904.4	888.5	3.0	3.0	-122.74	73.3	88.7	27.0	21.5	5.48	4.921		
1,000.0	976.8	1,004.8	981.2	3.8	3.8	-117.26	96.4	119.7	32.0	25.0	7.02	4.566		
1,100.0	1,067.1	1,105.1	1,071.6	4.6	4.6	-112.86	122.4	154.4	38.0	29.2	8.76	4.338		
1,200.0	1,156.2	1,205.2	1,159.5	5.4	5.5	-106.30	151.2	192.9	44.0	33.2	10.73	4.095		
1,300.0	1,245.3	1,304.8	1,244.2	6.3	6.6	-95.46	182.4	234.7	50.3	37.5	12.82	3.921	SF	
1,400.0	1,334.4	1,403.9	1,327.2	7.2	7.6	-84.80	214.9	278.1	58.5	44.0	14.54	4.024		
1,500.0	1,422.2	1,503.3	1,410.4	8.1	8.6	-78.82	247.4	321.6	67.7	51.5	16.17	4.186		
1,511.6	1,432.3	1,514.9	1,420.1	8.2	8.8	-78.51	251.2	326.7	68.7	52.4	16.37	4.197		
1,600.0	1,508.5	1,602.9	1,493.8	9.1	9.7	-76.78	280.0	365.2	76.6	58.7	17.94	4.271		
1,700.0	1,594.8	1,702.4	1,577.2	10.0	10.7	-75.21	312.6	408.8	85.6	65.9	19.70	4.345		
1,800.0	1,681.1	1,802.0	1,660.6	11.0	11.8	-73.94	345.2	452.4	94.6	73.2	21.45	4.411		

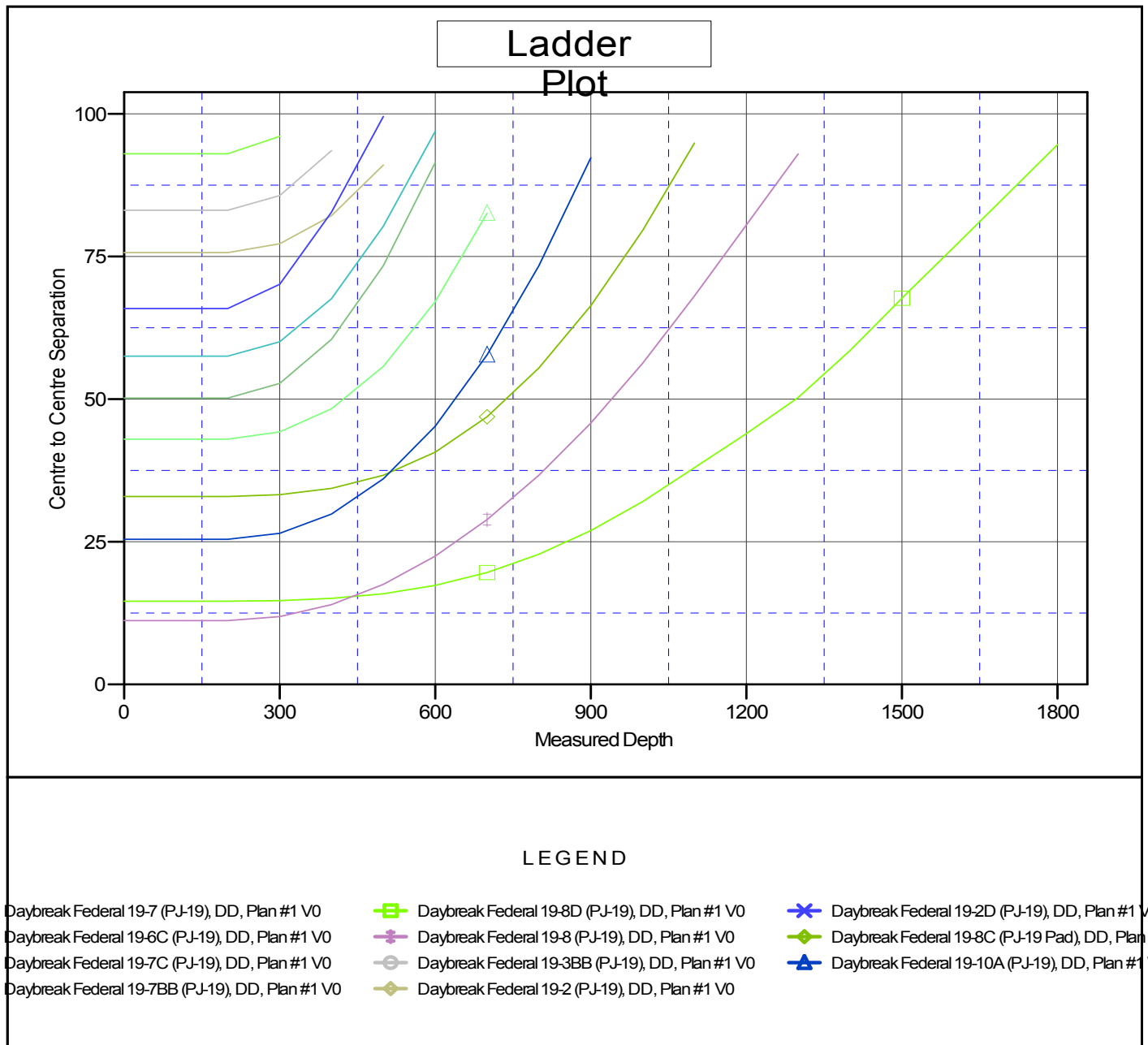
Cathedral Energy Services

Anticollision Report

Company:	EnCana Oil & Gas (USA) Inc	Local Co-ordinate Reference:	Well Daybreak Federal 19-8BB (PJ-19)
Project:	S. Piceance	TVD Reference:	KBE @ 5449.0ft (Original Well Elev)
Reference Site:	NWSE S19-T7S-R95W (PJ-19 Pad)	MD Reference:	KBE @ 5449.0ft (Original Well Elev)
Site Error:	0.0ft	North Reference:	True
Reference Well:	Daybreak Federal 19-8BB (PJ-19)	Survey Calculation Method:	Minimum Curvature
Well Error:	0.0ft	Output errors are at	2.00 sigma
Reference Wellbore	DD	Database:	EDM 5000.1 US Multi Users DB
Reference Design:	Plan #1	Offset TVD Reference:	Offset Datum

Reference Depths are relative to KBE @ 5449.0ft (Original Well Elev)
Offset Depths are relative to Offset Datum
Central Meridian is -105.500000 °

Coordinates are relative to: Daybreak Federal 19-8BB (PJ-19)
Coordinate System is US State Plane 1983, Colorado Central Zone
Grid Convergence at Surface is: -1.60°



CC - Min centre to center distance or convergent point, SF - min separation factor, ES - min ellipse separation