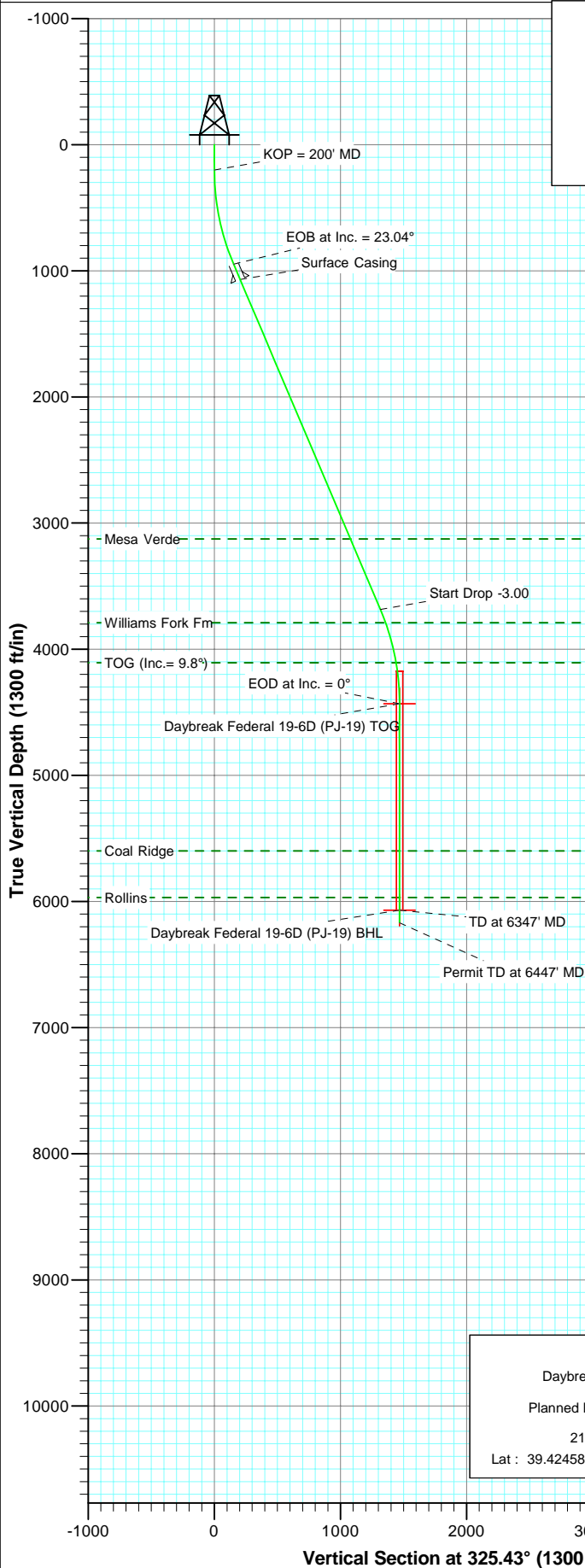
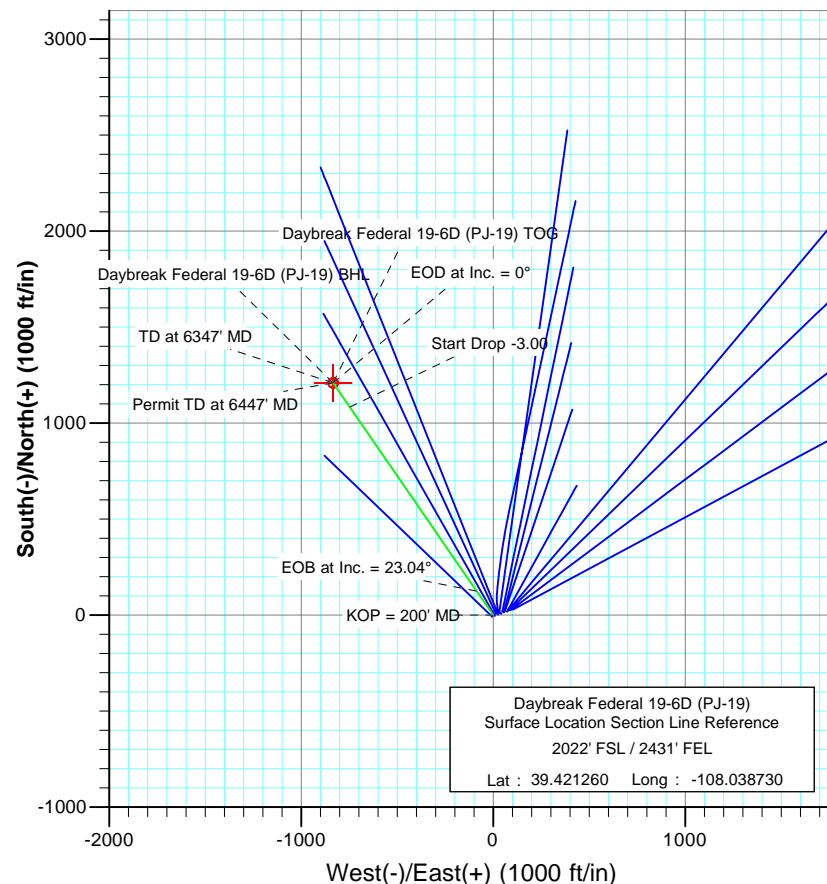




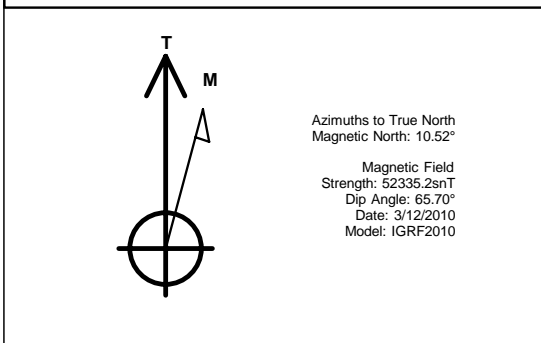
Project: S. Piceance
Site: NWSE S19-T7S-R95W (PJ-19 Pad)
Well: Daybreak Federal 19-6D (PJ-19)
Wellbore: DD
Plan: Plan #1



SECTION DETAILS										
Sec	MD	Inc	Azi	TVD	+N/-S	+E/-W	Dleg	TFace	VSection	Target
1	0.0	0.00	0.00	0.0	0.0	0.0	0.00	0.00	0.0	
2	200.0	0.00	0.00	200.0	0.0	0.0	0.00	0.00	0.0	
3	967.9	23.04	325.43	947.4	125.4	-86.4	3.00	325.43	152.3	
4	3942.4	23.04	325.43	3684.6	1083.9	-746.9	0.00	0.00	1316.3	
5	4710.3	0.00	0.00	4432.0	1209.3	-833.3	3.00	180.00	1468.6	Daybreak Federal 19-6D (PJ-19) TOG
6	6347.3	0.00	0.00	6069.0	1209.3	-833.3	0.00	0.00	1468.6	Daybreak Federal 19-6D (PJ-19) BHL
7	6447.3	0.00	0.00	6169.0	1209.3	-833.3	0.00	0.00	1468.6	



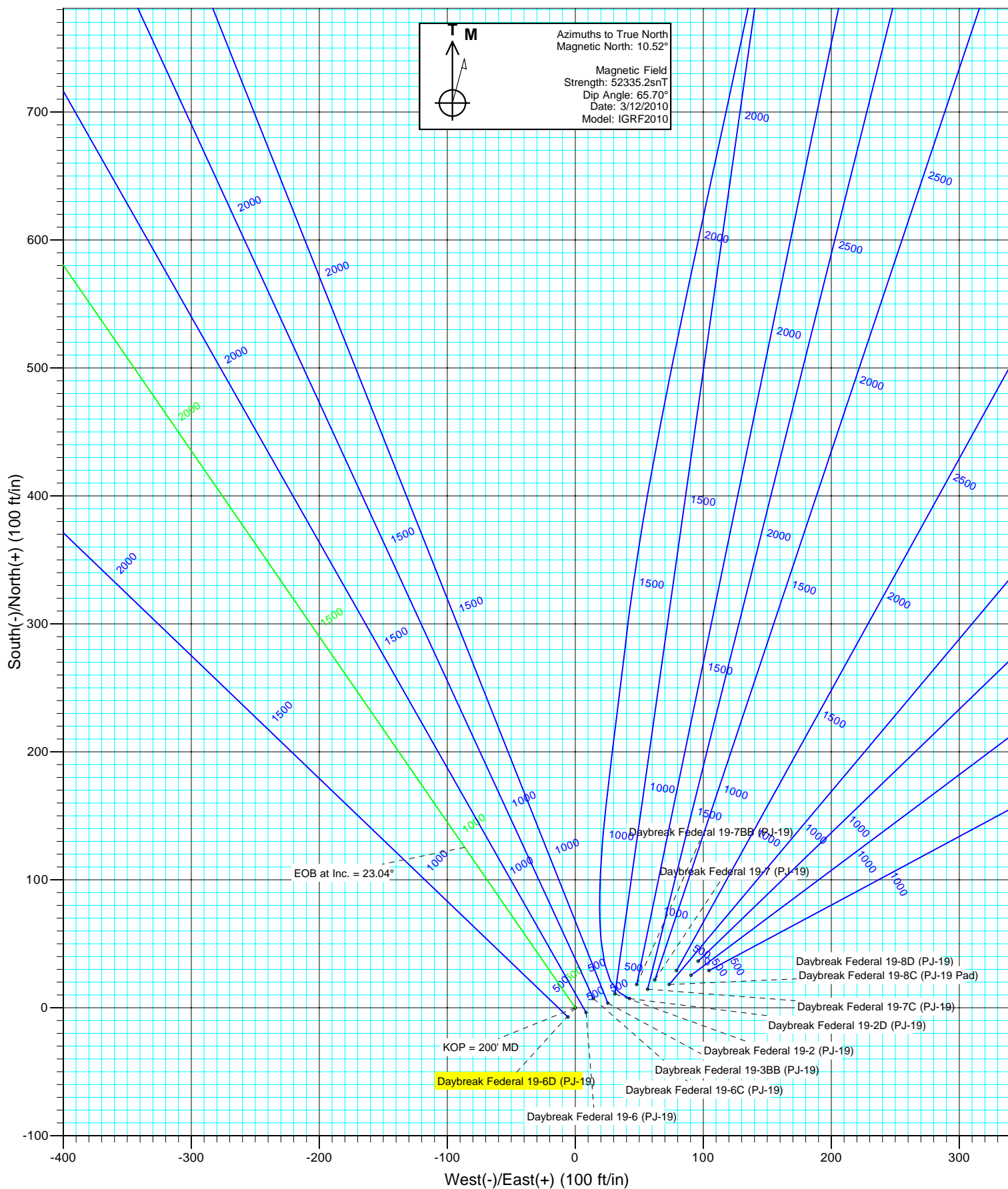
FORMATION TOP DETAILS		
TVDPath	MDPath	Formation
3125.0	3334.2	Mesa Verde
3790.0	4055.5	Williams Fork Fm
4107.0	4383.7	TOG (Inc.= 9.8°)
5599.0	5877.3	Coal Ridge
5969.0	6247.3	Rollins



DESIGN DETAILS: Plan #1				
Job# 105XXX				
KBE @ 5449.0ft (Original Well Elev)				
Target	Azimuth	Origin Type	N/S	E/W
Daybreak Federal 19-6D (PJ-19) BHL	325.43	Slot	0.0	0.0

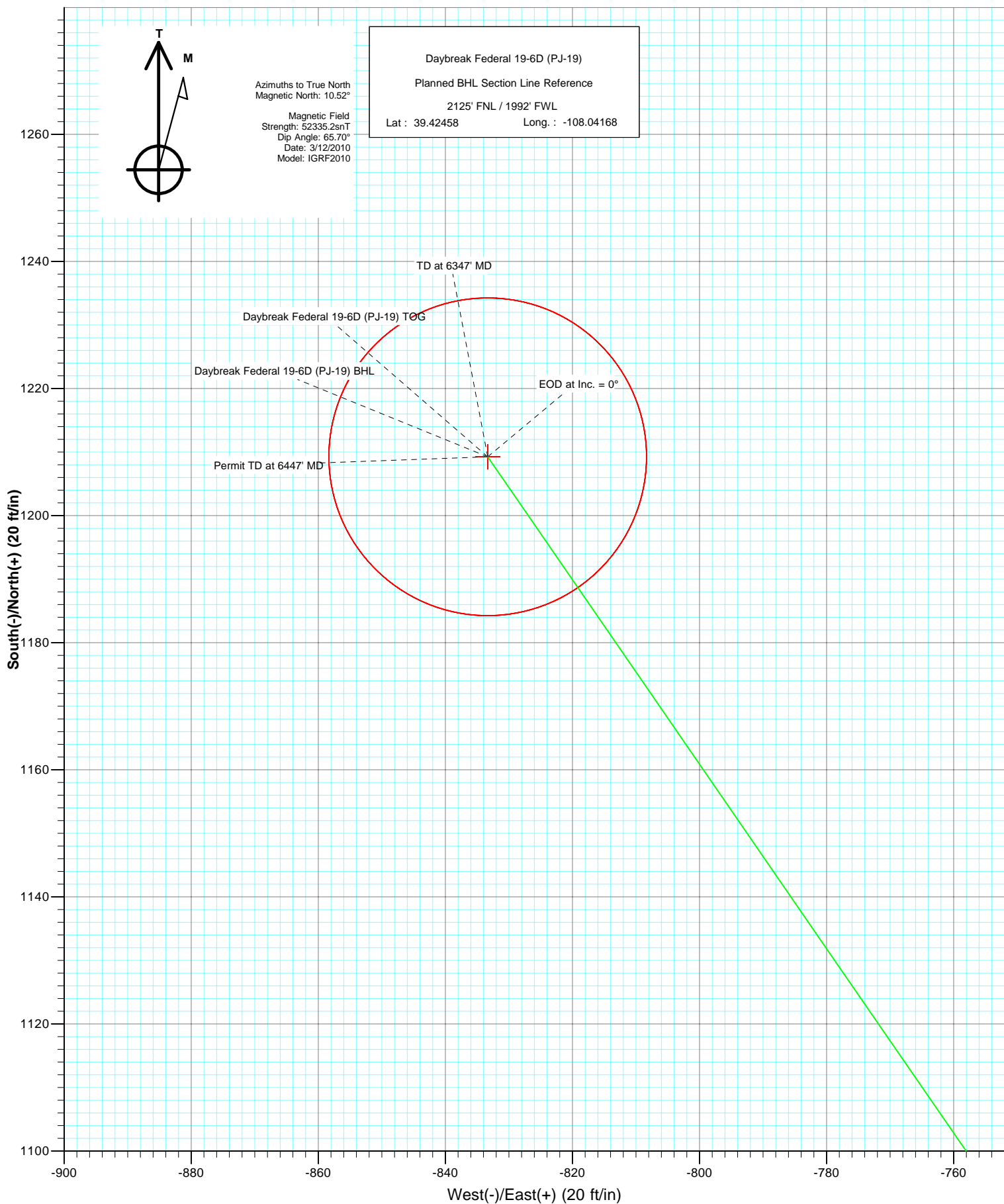


Project: S. Piceance
Site: NWSE S19-T7S-R95W (PJ-19 Pad)
Well: Daybreak Federal 19-6D (PJ-19)
Wellbore: DD
Design: Plan #1





Project: S. Piceance
Site: NWSE S19-T7S-R95W (PJ-19 Pad)
Well: Daybreak Federal 19-6D (PJ-19)
Wellbore: DD
Plan: Plan #1



Cathedral Energy Services

Planning Report

Database:	EDM 5000.1 US Multi Users DB	Local Co-ordinate Reference:	Well Daybreak Federal 19-6D (PJ-19)
Company:	EnCana Oil & Gas (USA) Inc	TVD Reference:	KBE @ 5449.0ft (Original Well Elev)
Project:	S. Piceance	MD Reference:	KBE @ 5449.0ft (Original Well Elev)
Site:	NWSE S19-T7S-R95W (PJ-19 Pad)	North Reference:	True
Well:	Daybreak Federal 19-6D (PJ-19)	Survey Calculation Method:	Minimum Curvature
Wellbore:	DD		
Design:	Plan #1		

Project	S. Piceance, Garfield County, CO		
Map System:	US State Plane 1983	System Datum:	Mean Sea Level
Geo Datum:	North American Datum 1983		
Map Zone:	Colorado Central Zone		

Site		NWSE S19-T7S-R95W (PJ-19 Pad)			
Site Position:		Northing:	1,588,373.67 ft	Latitude:	39.421340
From:	Lat/Long	Easting:	2,283,011.65 ft	Longitude:	-108.038360
Position Uncertainty:	0.0 ft	Slot Radius:	13.200 in	Grid Convergence:	-1.60 °

Well	Daybreak Federal 19-6D (PJ-19)					
Well Position	+N/-S	0.0 ft	Northing:	1,588,347.45 ft	Latitude:	39.421260
	+E/-W	0.0 ft	Easting:	2,282,906.35 ft	Longitude:	-108.038730
Position Uncertainty		0.0 ft	Wellhead Elevation:	ft	Ground Level:	5,427.0 ft

Wellbore	DD				
Magnetics	Model Name	Sample Date	Declination (°)	Dip Angle (°)	Field Strength (nT)
	IGRF2010	3/12/2010	10.52	65.70	52,335

Design	Plan #1			
Audit Notes:				
Version:	Phase:	PLAN	Tie On Depth:	0.0
Vertical Section:	Depth From (TVD) (ft)	+N/-S (ft)	+E/-W (ft)	Direction (°)
	0.0	0.0	0.0	325.43

Plan Sections										
Measured Depth (ft)	Inclination (°)	Azimuth (°)	Vertical Depth (ft)	+N/-S (ft)	+E/-W (ft)	Dogleg Rate (°/100ft)	Build Rate (°/100ft)	Turn Rate (°/100ft)	TFO (°)	Target
0.0	0.00	0.00	0.0	0.0	0.0	0.00	0.00	0.00	0.00	
200.0	0.00	0.00	200.0	0.0	0.0	0.00	0.00	0.00	0.00	
967.9	23.04	325.43	947.4	125.4	-86.4	3.00	3.00	0.00	325.43	
3,942.4	23.04	325.43	3,684.6	1,083.9	-746.9	0.00	0.00	0.00	0.00	
4,710.3	0.00	0.00	4,432.0	1,209.3	-833.3	3.00	-3.00	0.00	180.00	Daybreak Federal 19-
6,347.3	0.00	0.00	6,069.0	1,209.3	-833.3	0.00	0.00	0.00	0.00	Daybreak Federal 19-
6,447.3	0.00	0.00	6,169.0	1,209.3	-833.3	0.00	0.00	0.00	0.00	

Cathedral Energy Services

Planning Report

Database:	EDM 5000.1 US Multi Users DB	Local Co-ordinate Reference:	Well Daybreak Federal 19-6D (PJ-19)
Company:	EnCana Oil & Gas (USA) Inc	TVD Reference:	KBE @ 5449.0ft (Original Well Elev)
Project:	S. Piceance	MD Reference:	KBE @ 5449.0ft (Original Well Elev)
Site:	NWSE S19-T7S-R95W (PJ-19 Pad)	North Reference:	True
Well:	Daybreak Federal 19-6D (PJ-19)	Survey Calculation Method:	Minimum Curvature
Wellbore:	DD		
Design:	Plan #1		

Planned Survey

Measured Depth (ft)	Inclination (°)	Azimuth (°)	Vertical Depth (ft)	+N/-S (ft)	+E/-W (ft)	Vertical Section (ft)	Dogleg Rate (°/100ft)	Build Rate (°/100ft)	Comments / Formations
0.0	0.00	0.00	0.0	0.0	0.0	0.0	0.00	0.00	
100.0	0.00	0.00	100.0	0.0	0.0	0.0	0.00	0.00	
200.0	0.00	0.00	200.0	0.0	0.0	0.0	0.00	0.00	KOP = 200' MD
300.0	3.00	325.43	300.0	2.2	-1.5	2.6	3.00	3.00	
400.0	6.00	325.43	399.6	8.6	-5.9	10.5	3.00	3.00	
500.0	9.00	325.43	498.8	19.4	-13.3	23.5	3.00	3.00	
600.0	12.00	325.43	597.1	34.4	-23.7	41.7	3.00	3.00	
700.0	15.00	325.43	694.3	53.6	-36.9	65.1	3.00	3.00	
800.0	18.00	325.43	790.2	77.0	-53.0	93.5	3.00	3.00	
900.0	21.00	325.43	884.4	104.5	-72.0	126.9	3.00	3.00	
967.9	23.04	325.43	947.4	125.4	-86.4	152.3	3.00	3.00	EOB at Inc. = 23.04°
1,000.0	23.04	325.43	976.9	135.8	-93.6	164.9	0.00	0.00	
1,100.0	23.04	325.43	1,068.9	168.0	-115.8	204.0	0.00	0.00	Surface Casing
1,200.0	23.04	325.43	1,161.0	200.2	-138.0	243.1	0.00	0.00	
1,300.0	23.04	325.43	1,253.0	232.4	-160.2	282.3	0.00	0.00	
1,400.0	23.04	325.43	1,345.0	264.6	-182.4	321.4	0.00	0.00	
1,500.0	23.04	325.43	1,437.0	296.9	-204.6	360.5	0.00	0.00	
1,600.0	23.04	325.43	1,529.1	329.1	-226.8	399.7	0.00	0.00	
1,700.0	23.04	325.43	1,621.1	361.3	-249.0	438.8	0.00	0.00	
1,800.0	23.04	325.43	1,713.1	393.5	-271.2	477.9	0.00	0.00	
1,900.0	23.04	325.43	1,805.1	425.8	-293.4	517.1	0.00	0.00	
2,000.0	23.04	325.43	1,897.2	458.0	-315.6	556.2	0.00	0.00	
2,100.0	23.04	325.43	1,989.2	490.2	-337.8	595.3	0.00	0.00	
2,200.0	23.04	325.43	2,081.2	522.4	-360.0	634.5	0.00	0.00	
2,300.0	23.04	325.43	2,173.2	554.7	-382.2	673.6	0.00	0.00	
2,400.0	23.04	325.43	2,265.3	586.9	-404.4	712.7	0.00	0.00	
2,500.0	23.04	325.43	2,357.3	619.1	-426.6	751.9	0.00	0.00	
2,600.0	23.04	325.43	2,449.3	651.3	-448.8	791.0	0.00	0.00	
2,700.0	23.04	325.43	2,541.3	683.5	-471.0	830.1	0.00	0.00	
2,800.0	23.04	325.43	2,633.4	715.8	-493.2	869.3	0.00	0.00	
2,900.0	23.04	325.43	2,725.4	748.0	-515.5	908.4	0.00	0.00	
3,000.0	23.04	325.43	2,817.4	780.2	-537.7	947.5	0.00	0.00	
3,100.0	23.04	325.43	2,909.4	812.4	-559.9	986.7	0.00	0.00	
3,200.0	23.04	325.43	3,001.5	844.7	-582.1	1,025.8	0.00	0.00	
3,300.0	23.04	325.43	3,093.5	876.9	-604.3	1,064.9	0.00	0.00	
3,334.2	23.04	325.43	3,125.0	887.9	-611.9	1,078.3	0.00	0.00	Mesa Verde
3,400.0	23.04	325.43	3,185.5	909.1	-626.5	1,104.1	0.00	0.00	
3,500.0	23.04	325.43	3,277.5	941.3	-648.7	1,143.2	0.00	0.00	
3,600.0	23.04	325.43	3,369.6	973.5	-670.9	1,182.3	0.00	0.00	
3,700.0	23.04	325.43	3,461.6	1,005.8	-693.1	1,221.5	0.00	0.00	
3,800.0	23.04	325.43	3,553.6	1,038.0	-715.3	1,260.6	0.00	0.00	
3,900.0	23.04	325.43	3,645.6	1,070.2	-737.5	1,299.7	0.00	0.00	
3,942.4	23.04	325.43	3,684.6	1,083.9	-746.9	1,316.3	0.00	0.00	Start Drop -3.00
4,000.0	21.31	325.43	3,738.0	1,101.8	-759.3	1,338.1	3.00	-3.00	
4,055.5	19.64	325.43	3,790.0	1,117.8	-770.3	1,357.5	3.00	-3.00	Williams Fork Fm
4,100.0	18.31	325.43	3,832.1	1,129.7	-778.5	1,371.9	3.00	-3.00	
4,200.0	15.31	325.43	3,927.8	1,153.5	-794.9	1,400.8	3.00	-3.00	
4,300.0	12.31	325.43	4,024.9	1,173.1	-808.4	1,424.7	3.00	-3.00	
4,383.7	9.80	325.43	4,107.0	1,186.3	-817.5	1,440.7	3.00	-3.00	TOG (Inc. = 9.8°)
4,400.0	9.31	325.43	4,123.1	1,188.6	-819.1	1,443.5	3.00	-3.00	
4,500.0	6.31	325.43	4,222.2	1,199.8	-826.8	1,457.0	3.00	-3.00	
4,600.0	3.31	325.43	4,321.8	1,206.7	-831.5	1,465.4	3.00	-3.00	

Cathedral Energy Services

Planning Report

Database:	EDM 5000.1 US Multi Users DB	Local Co-ordinate Reference:	Well Daybreak Federal 19-6D (PJ-19)
Company:	EnCana Oil & Gas (USA) Inc	TVD Reference:	KBE @ 5449.0ft (Original Well Elev)
Project:	S. Piceance	MD Reference:	KBE @ 5449.0ft (Original Well Elev)
Site:	NWSE S19-T7S-R95W (PJ-19 Pad)	North Reference:	True
Well:	Daybreak Federal 19-6D (PJ-19)	Survey Calculation Method:	Minimum Curvature
Wellbore:	DD		
Design:	Plan #1		

Planned Survey									
Measured Depth (ft)	Inclination (°)	Azimuth (°)	Vertical Depth (ft)	+N/-S (ft)	+E/-W (ft)	Vertical Section (ft)	Dogleg Rate (°/100ft)	Build Rate (°/100ft)	Comments / Formations
4,700.0	0.31	325.43	4,421.7	1,209.3	-833.3	1,468.6	3.00	-3.00	
4,710.3	0.00	0.00	4,432.0	1,209.3	-833.3	1,468.6	3.00	-3.00	EOD at Inc. = 0° - Daybreak Federal 19-6D (PJ-19)
4,800.0	0.00	0.00	4,521.7	1,209.3	-833.3	1,468.6	0.00	0.00	
4,900.0	0.00	0.00	4,621.7	1,209.3	-833.3	1,468.6	0.00	0.00	
5,000.0	0.00	0.00	4,721.7	1,209.3	-833.3	1,468.6	0.00	0.00	
5,100.0	0.00	0.00	4,821.7	1,209.3	-833.3	1,468.6	0.00	0.00	
5,200.0	0.00	0.00	4,921.7	1,209.3	-833.3	1,468.6	0.00	0.00	
5,300.0	0.00	0.00	5,021.7	1,209.3	-833.3	1,468.6	0.00	0.00	
5,400.0	0.00	0.00	5,121.7	1,209.3	-833.3	1,468.6	0.00	0.00	
5,500.0	0.00	0.00	5,221.7	1,209.3	-833.3	1,468.6	0.00	0.00	
5,600.0	0.00	0.00	5,321.7	1,209.3	-833.3	1,468.6	0.00	0.00	
5,700.0	0.00	0.00	5,421.7	1,209.3	-833.3	1,468.6	0.00	0.00	
5,800.0	0.00	0.00	5,521.7	1,209.3	-833.3	1,468.6	0.00	0.00	
5,877.3	0.00	0.00	5,599.0	1,209.3	-833.3	1,468.6	0.00	0.00	Coal Ridge
5,900.0	0.00	0.00	5,621.7	1,209.3	-833.3	1,468.6	0.00	0.00	
6,000.0	0.00	0.00	5,721.7	1,209.3	-833.3	1,468.6	0.00	0.00	
6,100.0	0.00	0.00	5,821.7	1,209.3	-833.3	1,468.6	0.00	0.00	
6,200.0	0.00	0.00	5,921.7	1,209.3	-833.3	1,468.6	0.00	0.00	
6,247.3	0.00	0.00	5,969.0	1,209.3	-833.3	1,468.6	0.00	0.00	Rollins
6,300.0	0.00	0.00	6,021.7	1,209.3	-833.3	1,468.6	0.00	0.00	
6,347.3	0.00	0.00	6,069.0	1,209.3	-833.3	1,468.6	0.00	0.00	TD at 6347' MD - Daybreak Federal 19-6D (PJ-19)
6,400.0	0.00	0.00	6,121.7	1,209.3	-833.3	1,468.6	0.00	0.00	
6,447.3	0.00	0.00	6,169.0	1,209.3	-833.3	1,468.6	0.00	0.00	Permit TD at 6447' MD

Targets									
Target Name	Dip Angle (°)	Dip Dir. (°)	TVD (ft)	+N/-S (ft)	+E/-W (ft)	Northing (ft)	Easting (ft)	Latitude	Longitude
- hit/miss target									
- Shape									
Daybreak Federal 19-6C	0.00	0.00	6,069.0	1,209.3	-833.3	1,589,579.54	2,282,107.13	39.424580	-108.041680
- plan hits target center									
- Circle (radius 25.0)									
Daybreak Federal 19-6C	0.00	0.00	4,432.0	1,209.3	-833.3	1,589,579.54	2,282,107.13	39.424580	-108.041680
- plan hits target center									
- Point									

Casing Points					
Measured Depth (ft)	Vertical Depth (ft)	Name	Casing Diameter (in)	Hole Diameter (in)	
1,100.0	1,068.9	Surface Casing	5.500	6.000	

Cathedral Energy Services

Planning Report

Database:	EDM 5000.1 US Multi Users DB	Local Co-ordinate Reference:	Well Daybreak Federal 19-6D (PJ-19)
Company:	EnCana Oil & Gas (USA) Inc	TVD Reference:	KBE @ 5449.0ft (Original Well Elev)
Project:	S. Piceance	MD Reference:	KBE @ 5449.0ft (Original Well Elev)
Site:	NWSE S19-T7S-R95W (PJ-19 Pad)	North Reference:	True
Well:	Daybreak Federal 19-6D (PJ-19)	Survey Calculation Method:	Minimum Curvature
Wellbore:	DD		
Design:	Plan #1		

Formations						
Measured Depth (ft)	Vertical Depth (ft)	Name	Lithology	Dip (°)	Dip Direction (°)	
3,334.2	3,125.0	Mesa Verde		0.00		
4,055.5	3,790.0	Williams Fork Fm		0.00		
4,383.7	4,107.0	TOG (Inc.= 9.8°)		0.00		
5,877.3	5,599.0	Coal Ridge		0.00		
6,247.3	5,969.0	Rollins		0.00		

Plan Annotations					
Measured Depth (ft)	Vertical Depth (ft)	Local Coordinates			
		+N/-S (ft)	+E/-W (ft)	Comment	
200.0	200.0	0.0	0.0	KOP = 200' MD	
967.9	947.4	125.4	-86.4	EOB at Inc. = 23.04°	
3,942.4	3,684.6	1,083.9	-746.9	Start Drop -3.00	
4,710.3	4,432.0	1,209.3	-833.3	EOD at Inc. = 0°	
6,347.3	6,069.0	1,209.3	-833.3	TD at 6347' MD	
6,447.3	6,169.0	1,209.3	-833.3	Permit TD at 6447' MD	

EnCana Oil & Gas (USA) Inc

S. Piceance

NWSE S19-T7S-R95W (PJ-19 Pad)

Daybreak Federal 19-6D (PJ-19)

DD

Plan #1

Anticollision Report

22 March, 2010

Cathedral Energy Services

Anticollision Report

Company:	EnCana Oil & Gas (USA) Inc	Local Co-ordinate Reference:	Well Daybreak Federal 19-6D (PJ-19)
Project:	S. Piceance	TVD Reference:	KBE @ 5449.0ft (Original Well Elev)
Reference Site:	NWSE S19-T7S-R95W (PJ-19 Pad)	MD Reference:	KBE @ 5449.0ft (Original Well Elev)
Site Error:	0.0ft	North Reference:	True
Reference Well:	Daybreak Federal 19-6D (PJ-19)	Survey Calculation Method:	Minimum Curvature
Well Error:	0.0ft	Output errors are at	2.00 sigma
Reference Wellbore	DD	Database:	EDM 5000.1 US Multi Users DB
Reference Design:	Plan #1	Offset TVD Reference:	Offset Datum

Reference	Plan #1		
Filter type:	NO GLOBAL FILTER: Using user defined selection & filtering criteria		
Interpolation Method:	Stations	Error Model:	Systematic Ellipse
Depth Range:	0.0 to 99,999.0ft	Scan Method:	Closest Approach 3D
Results Limited by:	Maximum center-center distance of 100.0ft	Error Surface:	Elliptical Conic
Warning Levels Evaluated at:	2.00 Sigma		

Survey Tool Program	Date	3/22/2010		
From (ft)	To (ft)	Survey (Wellbore)	Tool Name	Description
0.0	6,447.3	Plan #1 (DD)	MWD	Geolink MWD

Summary						
Site Name	Reference Measured Depth (ft)	Offset Measured Depth (ft)	Distance Between Centres (ft)	Distance Between Ellipses (ft)	Separation Factor	Warning
Offset Well - Wellbore - Design						
NWSE S19-T7S-R95W (PJ-19 Pad)						
Daybreak Federal 19-10A (PJ-19) - DD - Plan #1	200.0	200.0	84.3	83.7	135.667	CC, ES
Daybreak Federal 19-10A (PJ-19) - DD - Plan #1	400.0	393.0	94.6	93.2	68.461	SF
Daybreak Federal 19-2 (PJ-19) - DD - Plan #1	200.0	200.0	32.9	32.3	53.013	CC, ES
Daybreak Federal 19-2 (PJ-19) - DD - Plan #1	700.0	691.8	79.7	76.3	23.253	SF
Daybreak Federal 19-2D (PJ-19) - DD - Plan #1	426.5	428.8	39.6	38.0	26.172	CC, ES
Daybreak Federal 19-2D (PJ-19) - DD - Plan #1	800.0	797.2	72.1	68.1	18.003	SF
Daybreak Federal 19-3BB (PJ-19) - DD - Plan #1	200.0	200.0	25.7	25.1	41.338	CC, ES
Daybreak Federal 19-3BB (PJ-19) - DD - Plan #1	1,300.0	1,308.1	94.5	84.6	9.517	SF
Daybreak Federal 19-6 (PJ-19) - DD - Plan #1	200.0	200.0	9.2	8.6	14.846	CC, ES
Daybreak Federal 19-6 (PJ-19) - DD - Plan #1	1,800.0	1,812.2	47.4	28.4	2.499	SF
Daybreak Federal 19-6BB (PJ 19) - DD - Plan #1	200.0	200.0	9.2	8.6	14.843	CC, ES
Daybreak Federal 19-6BB (PJ 19) - DD - Plan #1	900.0	899.5	34.7	28.8	5.888	SF
Daybreak Federal 19-6C (PJ-19) - DD - Plan #1	200.0	200.0	15.9	15.3	25.578	CC, ES
Daybreak Federal 19-6C (PJ-19) - DD - Plan #1	1,100.0	1,098.1	51.5	42.7	5.860	SF
Daybreak Federal 19-7 (PJ-19) - DD - Plan #1	200.0	200.0	65.9	65.3	106.030	CC, ES
Daybreak Federal 19-7 (PJ-19) - DD - Plan #1	500.0	492.4	86.2	84.3	45.157	SF
Daybreak Federal 19-7BB (PJ-19) - DD - Plan #1	200.0	200.0	51.4	50.7	82.664	CC, ES
Daybreak Federal 19-7BB (PJ-19) - DD - Plan #1	600.0	597.1	73.5	71.3	33.449	SF
Daybreak Federal 19-7C (PJ-19) - DD - Plan #1	200.0	200.0	58.3	57.7	93.908	CC, ES
Daybreak Federal 19-7C (PJ-19) - DD - Plan #1	600.0	597.1	82.6	80.4	37.999	SF
Daybreak Federal 19-8 (PJ-19) - DD - Plan #1						Out of range
Daybreak Federal 19-8BB (PJ-19) - DD - Plan #1						Out of range
Daybreak Federal 19-8C (PJ-19 Pad) - DD - Plan #1	200.0	200.0	75.7	75.1	121.792	CC, ES
Daybreak Federal 19-8C (PJ-19 Pad) - DD - Plan #1	400.0	393.1	87.6	86.2	63.784	SF
Daybreak Federal 19-8D (PJ-19) - DD - Plan #1	200.0	200.0	93.9	93.3	151.169	CC, ES
Daybreak Federal 19-8D (PJ-19) - DD - Plan #1	300.0	295.5	97.1	96.1	99.995	SF

Cathedral Energy Services

Anticollision Report

Company:	EnCana Oil & Gas (USA) Inc	Local Co-ordinate Reference:	Well Daybreak Federal 19-6D (PJ-19)
Project:	S. Piceance	TVD Reference:	KBE @ 5449.0ft (Original Well Elev)
Reference Site:	NWSE S19-T7S-R95W (PJ-19 Pad)	MD Reference:	KBE @ 5449.0ft (Original Well Elev)
Site Error:	0.0ft	North Reference:	True
Reference Well:	Daybreak Federal 19-6D (PJ-19)	Survey Calculation Method:	Minimum Curvature
Well Error:	0.0ft	Output errors are at	2.00 sigma
Reference Wellbore	DD	Database:	EDM 5000.1 US Multi Users DB
Reference Design:	Plan #1	Offset TVD Reference:	Offset Datum

Offset Design NWSE S19-T7S-R95W (PJ-19 Pad) - Daybreak Federal 19-10A (PJ-19) - DD - Plan #1													Offset Site Error: 0.0 ft	
Survey Program: 0-MWD													Offset Well Error: 0.0 ft	
Reference		Offset		Semi Major Axis			Distance							
Measured Depth	Vertical Depth	Measured Depth	Vertical Depth	Reference	Offset	Highside Toolface	Offset Wellbore Centre		Between Centres	Between Ellipses	Total Uncertainty Axis	Separation Factor	Warning	
(ft)	(ft)	(ft)	(ft)	(ft)	(ft)	(°)	+N/-S (ft)	+E/-W (ft)	(ft)	(ft)				
0.0	0.0	0.0	0.0	0.0	0.0	69.78	29.1	79.1	84.3					
100.0	100.0	100.0	100.0	0.1	0.1	69.78	29.1	79.1	84.3	84.0	0.27	309.599		
200.0	200.0	200.0	200.0	0.3	0.3	69.78	29.1	79.1	84.3	83.7	0.62	135.667	CC, ES	
300.0	300.0	296.7	296.7	0.5	0.5	104.84	31.3	80.3	86.9	85.9	0.98	88.977		
400.0	399.6	393.0	392.7	0.7	0.7	106.12	37.7	83.8	94.6	93.2	1.38	68.461	SF	

Cathedral Energy Services

Anticollision Report

Company:	EnCana Oil & Gas (USA) Inc	Local Co-ordinate Reference:	Well Daybreak Federal 19-6D (PJ-19)
Project:	S. Piceance	TVD Reference:	KBE @ 5449.0ft (Original Well Elev)
Reference Site:	NWSE S19-T7S-R95W (PJ-19 Pad)	MD Reference:	KBE @ 5449.0ft (Original Well Elev)
Site Error:	0.0ft	North Reference:	True
Reference Well:	Daybreak Federal 19-6D (PJ-19)	Survey Calculation Method:	Minimum Curvature
Well Error:	0.0ft	Output errors are at	2.00 sigma
Reference Wellbore	DD	Database:	EDM 5000.1 US Multi Users DB
Reference Design:	Plan #1	Offset TVD Reference:	Offset Datum

Offset Design NWSE S19-T7S-R95W (PJ-19 Pad) - Daybreak Federal 19-2 (PJ-19) - DD - Plan #1													Offset Site Error:	0.0 ft		
Survey Program: 0-MWD															Offset Well Error:	0.0 ft
Reference		Offset		Semi Major Axis			Distance							Warning		
Measured Depth (ft)	Vertical Depth (ft)	Measured Depth (ft)	Vertical Depth (ft)	Reference (ft)	Offset (ft)	Highside Toolface (°)	Offset Wellbore Centre +N/-S (ft)	+E/-W (ft)	Between Centres (ft)	Between Ellipses (ft)	Total Uncertainty Axis	Separation Factor				
0.0	0.0	0.0	0.0	0.0	0.0	70.63	10.9	31.1	32.9							
100.0	100.0	100.0	100.0	0.1	0.1	70.63	10.9	31.1	32.9	32.7	0.27	120.978				
200.0	200.0	200.0	200.0	0.3	0.3	70.63	10.9	31.1	32.9	32.3	0.62	53.013 CC, ES				
300.0	300.0	299.2	299.1	0.5	0.5	105.51	13.5	31.4	34.8	33.8	0.98	35.404				
400.0	399.6	398.1	397.8	0.7	0.7	106.25	21.1	32.5	40.5	39.1	1.41	28.705				
500.0	498.8	496.7	495.5	1.0	1.0	107.06	33.7	34.3	49.9	47.9	1.94	25.649				
600.0	597.1	594.6	591.8	1.4	1.3	107.72	51.1	36.8	63.0	60.3	2.61	24.098				
700.0	694.3	691.8	686.3	1.8	1.8	108.15	73.3	39.9	79.7	76.3	3.43	23.253 SF				

Cathedral Energy Services

Anticollision Report

Company:	EnCana Oil & Gas (USA) Inc	Local Co-ordinate Reference:	Well Daybreak Federal 19-6D (PJ-19)
Project:	S. Piceance	TVD Reference:	KBE @ 5449.0ft (Original Well Elev)
Reference Site:	NWSE S19-T7S-R95W (PJ-19 Pad)	MD Reference:	KBE @ 5449.0ft (Original Well Elev)
Site Error:	0.0ft	North Reference:	True
Reference Well:	Daybreak Federal 19-6D (PJ-19)	Survey Calculation Method:	Minimum Curvature
Well Error:	0.0ft	Output errors are at	2.00 sigma
Reference Wellbore	DD	Database:	EDM 5000.1 US Multi Users DB
Reference Design:	Plan #1	Offset TVD Reference:	Offset Datum

Offset Design NWSE S19-T7S-R95W (PJ-19 Pad) - Daybreak Federal 19-2D (PJ-19) - DD - Plan #1												Offset Site Error: 0.0 ft			
Survey Program: 0-MWD														Offset Well Error: 0.0 ft	
Reference		Offset		Semi Major Axis			Distance							Warning	
Measured Depth (ft)	Vertical Depth (ft)	Measured Depth (ft)	Vertical Depth (ft)	Reference (ft)	Offset (ft)	Highside Toolface (°)	Offset Wellbore Centre +N/-S (ft)	+E/-W (ft)	Between Centres (ft)	Between Ellipses (ft)	Total Uncertainty Axis	Separation Factor			
0.0	0.0	0.0	0.0	0.0	0.0	80.25	7.3	42.4	43.0						
100.0	100.0	100.0	100.0	0.1	0.1	80.25	7.3	42.4	43.0	42.7	0.27	157.918			
200.0	200.0	200.0	200.0	0.3	0.3	80.25	7.3	42.4	43.0	42.4	0.62	69.200			
300.0	300.0	301.7	301.7	0.5	0.5	115.78	8.6	40.0	42.1	41.1	0.98	42.743			
400.0	399.6	402.5	402.1	0.7	0.7	118.71	12.8	33.5	39.7	38.3	1.38	28.689			
426.5	426.0	428.8	428.3	0.8	0.8	119.61	14.6	31.7	39.6	38.0	1.51	26.172 CC, ES			
500.0	498.8	501.6	500.7	1.0	0.9	121.87	21.3	27.4	40.8	39.0	1.86	21.974			
600.0	597.1	600.7	598.8	1.4	1.2	123.96	34.7	23.0	46.7	44.2	2.44	19.160			
700.0	694.3	699.3	695.6	1.8	1.6	124.76	52.8	20.2	57.1	54.0	3.15	18.162			
800.0	790.2	797.2	790.8	2.3	2.0	124.63	75.4	19.1	72.1	68.1	4.01	18.003 SF			
900.0	884.4	894.0	883.9	3.0	2.5	123.99	102.3	19.5	91.6	86.5	5.02	18.235			

Cathedral Energy Services

Anticollision Report

Company:	EnCana Oil & Gas (USA) Inc	Local Co-ordinate Reference:	Well Daybreak Federal 19-6D (PJ-19)
Project:	S. Piceance	TVD Reference:	KBE @ 5449.0ft (Original Well Elev)
Reference Site:	NWSE S19-T7S-R95W (PJ-19 Pad)	MD Reference:	KBE @ 5449.0ft (Original Well Elev)
Site Error:	0.0ft	North Reference:	True
Reference Well:	Daybreak Federal 19-6D (PJ-19)	Survey Calculation Method:	Minimum Curvature
Well Error:	0.0ft	Output errors are at	2.00 sigma
Reference Wellbore	DD	Database:	EDM 5000.1 US Multi Users DB
Reference Design:	Plan #1	Offset TVD Reference:	Offset Datum

Offset Design NWSE S19-T7S-R95W (PJ-19 Pad) - Daybreak Federal 19-3BB (PJ-19) - DD - Plan #1												Offset Site Error:	0.0 ft
Survey Program: 0-MWD												Offset Well Error:	0.0 ft
Reference		Offset		Semi Major Axis			Distance					Warning	
Measured Depth (ft)	Vertical Depth (ft)	Measured Depth (ft)	Vertical Depth (ft)	Reference (ft)	Offset (ft)	Highside Toolface (°)	Offset Wellbore Centre +N/-S (ft)	+E/-W (ft)	Between Centres (ft)	Between Ellipses (ft)	Total Uncertainty Axis	Separation Factor	
0.0	0.0	0.0	0.0	0.0	0.0	81.85	3.6	25.4	25.7				
100.0	100.0	100.0	100.0	0.1	0.1	81.85	3.6	25.4	25.7	25.4	0.27	94.335	
200.0	200.0	200.0	200.0	0.3	0.3	81.85	3.6	25.4	25.7	25.1	0.62	41.338 CC, ES	
300.0	300.0	300.0	300.0	0.5	0.5	121.37	3.6	25.4	27.0	26.0	0.98	27.604	
400.0	399.6	400.4	400.3	0.7	0.7	129.27	6.1	24.5	30.5	29.1	1.36	22.474	
500.0	498.8	501.1	500.7	1.0	0.9	134.16	13.5	21.5	35.4	33.6	1.79	19.815	
600.0	597.1	602.0	600.7	1.4	1.2	136.68	25.8	16.6	41.4	39.1	2.29	18.060	
700.0	694.3	703.1	700.1	1.8	1.5	137.54	43.0	9.8	48.2	45.3	2.90	16.646	
800.0	790.2	804.4	798.5	2.3	1.9	137.30	65.2	1.0	55.9	52.3	3.64	15.375	
900.0	884.4	905.8	895.7	3.0	2.5	136.34	92.2	-9.7	64.4	59.9	4.54	14.202	
967.9	947.4	974.8	960.8	3.4	2.9	135.43	113.3	-18.1	70.7	65.4	5.25	13.465	
1,000.0	976.9	1,007.4	991.3	3.7	3.1	134.86	124.0	-22.4	73.6	68.0	5.61	13.113	
1,100.0	1,068.9	1,109.0	1,085.0	4.4	3.8	131.19	160.5	-36.8	80.9	73.9	6.95	11.632	
1,200.0	1,161.0	1,208.5	1,176.0	5.1	4.5	126.91	198.1	-51.8	87.5	79.1	8.43	10.385	
1,300.0	1,253.0	1,308.1	1,266.9	5.8	5.3	123.25	235.8	-66.7	94.5	84.6	9.93	9.517 SF	

Cathedral Energy Services

Anticollision Report

Company:	EnCana Oil & Gas (USA) Inc	Local Co-ordinate Reference:	Well Daybreak Federal 19-6D (PJ-19)
Project:	S. Piceance	TVD Reference:	KBE @ 5449.0ft (Original Well Elev)
Reference Site:	NWSE S19-T7S-R95W (PJ-19 Pad)	MD Reference:	KBE @ 5449.0ft (Original Well Elev)
Site Error:	0.0ft	North Reference:	True
Reference Well:	Daybreak Federal 19-6D (PJ-19)	Survey Calculation Method:	Minimum Curvature
Well Error:	0.0ft	Output errors are at	2.00 sigma
Reference Wellbore	DD	Database:	EDM 5000.1 US Multi Users DB
Reference Design:	Plan #1	Offset TVD Reference:	Offset Datum

Offset Design NWSE S19-T7S-R95W (PJ-19 Pad) - Daybreak Federal 19-6 (PJ-19) - DD - Plan #1													Offset Site Error:	0.0 ft
Survey Program: 0-MWD													Offset Well Error:	0.0 ft
Reference		Offset		Semi Major Axis		Distance		Total		Separation		Warning		
Measured Depth (ft)	Vertical Depth (ft)	Measured Depth (ft)	Vertical Depth (ft)	Reference (ft)	Offset (ft)	Highside Toolface (°)	Offset Wellbore Centre +N/-S (ft)	+E/-W (ft)	Between Centres (ft)	Between Ellipses (ft)	Uncertainty Axis	Factor		
0.0	0.0	0.0	0.0	0.0	0.0	113.26	-3.6	8.5	9.2					
100.0	100.0	100.0	100.0	0.1	0.1	113.26	-3.6	8.5	9.2	9.0	0.27	33.880		
200.0	200.0	200.0	200.0	0.3	0.3	113.26	-3.6	8.5	9.2	8.6	0.62	14.846 CC, ES		
300.0	300.0	300.0	300.0	0.5	0.5	154.74	-3.6	8.5	11.5	10.6	0.97	11.866		
400.0	399.6	400.5	400.4	0.7	0.7	161.80	-1.3	7.2	16.5	15.2	1.32	12.452		
500.0	498.8	501.3	500.9	1.0	0.9	164.36	5.6	3.2	21.7	20.0	1.68	12.890		
600.0	597.1	602.3	601.1	1.4	1.2	164.96	17.1	-3.3	27.0	24.9	2.05	13.147		
700.0	694.3	703.7	700.7	1.8	1.5	164.54	33.3	-12.5	32.4	29.9	2.45	13.222		
800.0	790.2	805.3	799.4	2.3	2.0	163.53	54.2	-24.3	37.8	34.9	2.89	13.103		
900.0	884.4	907.1	896.9	3.0	2.5	162.17	79.6	-38.7	43.4	40.0	3.39	12.778		
967.9	947.4	976.4	962.4	3.4	2.9	161.10	99.5	-50.0	47.2	43.4	3.79	12.444		
1,000.0	976.9	1,009.2	993.0	3.7	3.1	160.48	109.6	-55.8	48.7	44.7	4.00	12.171		
1,100.0	1,068.9	1,111.3	1,087.1	4.4	3.9	157.01	144.0	-75.3	50.5	45.6	4.85	10.400		
1,110.4	1,078.5	1,121.7	1,096.6	4.4	3.9	156.56	147.6	-77.4	50.5	45.5	4.96	10.181		
1,200.0	1,161.0	1,211.2	1,178.4	5.1	4.6	152.63	179.3	-95.3	50.6	44.6	5.93	8.523		
1,300.0	1,253.0	1,311.2	1,269.7	5.8	5.3	148.30	214.7	-115.4	51.0	43.8	7.19	7.087		
1,400.0	1,345.0	1,411.3	1,361.2	6.5	6.0	144.02	250.1	-135.5	51.7	43.0	8.62	5.994		
1,500.0	1,437.0	1,513.1	1,452.8	7.2	6.9	137.19	288.7	-157.4	50.4	39.8	10.62	4.745		
1,600.0	1,529.1	1,614.0	1,541.1	7.9	7.8	124.85	331.2	-181.5	46.9	33.3	13.57	3.457		
1,694.7	1,616.2	1,708.0	1,621.8	8.6	8.7	108.37	373.1	-205.3	45.0	28.3	16.66	2.699		
1,700.0	1,621.1	1,713.2	1,626.3	8.7	8.7	107.43	375.4	-206.6	45.0	28.2	16.82	2.675		
1,800.0	1,713.1	1,812.2	1,711.2	9.4	9.6	90.14	419.6	-231.7	47.4	28.4	18.97	2.499 SF		
1,900.0	1,805.1	1,911.2	1,796.1	10.1	10.5	75.66	463.8	-256.7	53.6	33.8	19.84	2.702		
2,000.0	1,897.2	2,010.2	1,881.1	10.8	11.5	64.69	508.0	-281.8	62.5	42.5	19.97	3.129		
2,100.0	1,989.2	2,109.2	1,966.0	11.5	12.4	56.63	552.3	-306.9	73.1	53.2	19.86	3.680		
2,200.0	2,081.2	2,208.1	2,051.0	12.2	13.3	50.69	596.5	-332.0	84.7	65.0	19.74	4.294		
2,300.0	2,173.2	2,307.1	2,135.9	13.0	14.2	46.21	640.7	-357.1	97.1	77.4	19.69	4.932		

Cathedral Energy Services

Anticollision Report

Company:	EnCana Oil & Gas (USA) Inc	Local Co-ordinate Reference:	Well Daybreak Federal 19-6D (PJ-19)
Project:	S. Piceance	TVD Reference:	KBE @ 5449.0ft (Original Well Elev)
Reference Site:	NWSE S19-T7S-R95W (PJ-19 Pad)	MD Reference:	KBE @ 5449.0ft (Original Well Elev)
Site Error:	0.0ft	North Reference:	True
Reference Well:	Daybreak Federal 19-6D (PJ-19)	Survey Calculation Method:	Minimum Curvature
Well Error:	0.0ft	Output errors are at	2.00 sigma
Reference Wellbore	DD	Database:	EDM 5000.1 US Multi Users DB
Reference Design:	Plan #1	Offset TVD Reference:	Offset Datum

Offset Design NWSE S19-T7S-R95W (PJ-19 Pad) - Daybreak Federal 19-6BB (PJ 19) - DD - Plan #1													Offset Site Error: 0.0 ft		
Survey Program: 0-MWD														Offset Well Error: 0.0 ft	
Reference		Offset		Semi Major Axis			Distance							Warning	
Measured Depth (ft)	Vertical Depth (ft)	Measured Depth (ft)	Vertical Depth (ft)	Reference (ft)	Offset (ft)	Highside Toolface (°)	Offset Wellbore Centre		Between Centres (ft)	Between Ellipses (ft)	Total Uncertainty Axis	Separation Factor			
							+N/-S (ft)	+E/-W (ft)							
0.0	0.0	0.0	0.0	0.0	0.0	-142.22	-7.3	-5.7	9.2						
100.0	100.0	100.0	100.0	0.1	0.1	-142.22	-7.3	-5.7	9.2	9.0	0.27	33.872			
200.0	200.0	200.0	200.0	0.3	0.3	-142.22	-7.3	-5.7	9.2	8.6	0.62	14.843	CC, ES		
300.0	300.0	300.0	300.0	0.5	0.5	-106.99	-5.5	-7.5	9.7	8.8	0.99	9.872			
400.0	399.6	400.1	399.7	0.7	0.7	-105.36	0.0	-13.2	11.3	9.9	1.42	7.931			
500.0	498.8	500.1	498.8	1.0	1.0	-103.46	9.0	-22.6	13.9	11.9	1.99	6.996			
600.0	597.1	600.0	597.1	1.4	1.4	-101.73	21.6	-35.8	17.6	14.9	2.71	6.484			
700.0	694.3	699.9	694.2	1.8	1.8	-100.33	37.8	-52.6	22.3	18.7	3.60	6.178			
800.0	790.2	799.7	789.9	2.3	2.4	-99.22	57.4	-73.0	28.0	23.3	4.68	5.983			
900.0	884.4	899.5	884.1	3.0	3.0	-99.22	80.1	-96.7	34.7	28.8	5.89	5.888	SF		
967.9	947.4	967.1	947.8	3.4	3.4	-102.64	95.8	-113.1	39.8	33.1	6.74	5.913			
1,000.0	976.9	999.1	977.9	3.7	3.6	-104.77	103.3	-120.8	42.4	35.3	7.12	5.962			
1,100.0	1,068.9	1,098.6	1,071.7	4.4	4.2	-109.98	126.4	-145.0	50.9	42.6	8.28	6.147			
1,200.0	1,161.0	1,198.2	1,165.5	5.1	4.8	-113.69	149.6	-169.1	59.6	50.2	9.40	6.341			
1,300.0	1,253.0	1,297.7	1,259.2	5.8	5.4	-116.44	172.8	-193.2	68.5	58.0	10.50	6.523			
1,400.0	1,345.0	1,397.3	1,353.0	6.5	6.0	-118.56	195.9	-217.4	77.5	65.9	11.59	6.689			
1,500.0	1,437.0	1,496.8	1,446.7	7.2	6.6	-120.23	219.1	-241.5	86.7	74.0	12.68	6.836			
1,600.0	1,529.1	1,596.4	1,540.5	7.9	7.3	-121.59	242.3	-265.7	95.8	82.1	13.75	6.968			

Cathedral Energy Services

Anticollision Report

Company:	EnCana Oil & Gas (USA) Inc	Local Co-ordinate Reference:	Well Daybreak Federal 19-6D (PJ-19)
Project:	S. Piceance	TVD Reference:	KBE @ 5449.0ft (Original Well Elev)
Reference Site:	NWSE S19-T7S-R95W (PJ-19 Pad)	MD Reference:	KBE @ 5449.0ft (Original Well Elev)
Site Error:	0.0ft	North Reference:	True
Reference Well:	Daybreak Federal 19-6D (PJ-19)	Survey Calculation Method:	Minimum Curvature
Well Error:	0.0ft	Output errors are at	2.00 sigma
Reference Wellbore	DD	Database:	EDM 5000.1 US Multi Users DB
Reference Design:	Plan #1	Offset TVD Reference:	Offset Datum

Offset Design NWSE S19-T7S-R95W (PJ-19 Pad) - Daybreak Federal 19-6C (PJ-19) - DD - Plan #1													Offset Site Error: 0.0 ft	
Survey Program: 0-MWD													Offset Well Error: 0.0 ft	
Reference		Offset		Semi Major Axis			Distance							Warning
Measured Depth (ft)	Vertical Depth (ft)	Measured Depth (ft)	Vertical Depth (ft)	Reference (ft)	Offset (ft)	Highside Toolface (°)	Offset Wellbore Centre +N/-S (ft) +E/-W (ft)		Between Centres (ft)	Between Ellipses (ft)	Total Uncertainty Axis	Separation Factor		
0.0	0.0	0.0	0.0	0.0	0.0	62.72	7.3	14.1	15.9					
100.0	100.0	100.0	100.0	0.1	0.1	62.72	7.3	14.1	15.9	15.6	0.27	58.371		
200.0	200.0	200.0	200.0	0.3	0.3	62.72	7.3	14.1	15.9	15.3	0.62	25.578	CC, ES	
300.0	300.0	300.0	299.9	0.5	0.5	97.22	9.7	13.0	16.3	15.4	0.99	16.555		
400.0	399.6	399.9	399.5	0.7	0.7	97.01	16.8	9.8	17.7	16.3	1.43	12.394		
500.0	498.8	499.8	498.6	1.0	1.0	96.73	28.6	4.3	19.9	17.9	1.99	10.005		
600.0	597.1	599.7	596.8	1.4	1.4	96.42	45.2	-3.3	23.1	20.4	2.71	8.503		
700.0	694.3	699.6	693.9	1.8	1.8	96.11	66.3	-13.0	27.1	23.5	3.61	7.514		
800.0	790.2	799.4	789.6	2.3	2.3	95.81	92.0	-24.8	32.0	27.3	4.67	6.842		
900.0	884.4	899.1	883.6	3.0	3.0	95.54	122.2	-38.7	37.7	31.8	5.92	6.373		
967.9	947.4	966.7	946.3	3.4	3.4	95.37	145.3	-49.3	42.1	35.2	6.87	6.132		
1,000.0	976.9	998.7	975.6	3.7	3.7	95.01	156.8	-54.6	44.3	37.0	7.32	6.052		
1,100.0	1,068.9	1,098.1	1,065.4	4.4	4.5	90.28	195.6	-72.5	51.5	42.7	8.79	5.860	SF	
1,200.0	1,161.0	1,197.6	1,154.0	5.1	5.3	84.19	236.7	-91.3	59.6	49.4	10.17	5.862		
1,300.0	1,253.0	1,297.1	1,242.7	5.8	6.1	79.60	277.7	-110.2	68.2	56.7	11.48	5.944		
1,400.0	1,345.0	1,396.6	1,331.3	6.5	6.9	76.05	318.8	-129.1	77.2	64.4	12.74	6.060		
1,500.0	1,437.0	1,494.1	1,417.2	7.2	7.8	71.92	360.9	-148.4	87.4	73.5	13.90	6.289		

Cathedral Energy Services

Anticollision Report

Company:	EnCana Oil & Gas (USA) Inc	Local Co-ordinate Reference:	Well Daybreak Federal 19-6D (PJ-19)
Project:	S. Piceance	TVD Reference:	KBE @ 5449.0ft (Original Well Elev)
Reference Site:	NWSE S19-T7S-R95W (PJ-19 Pad)	MD Reference:	KBE @ 5449.0ft (Original Well Elev)
Site Error:	0.0ft	North Reference:	True
Reference Well:	Daybreak Federal 19-6D (PJ-19)	Survey Calculation Method:	Minimum Curvature
Well Error:	0.0ft	Output errors are at	2.00 sigma
Reference Wellbore	DD	Database:	EDM 5000.1 US Multi Users DB
Reference Design:	Plan #1	Offset TVD Reference:	Offset Datum

Offset Design NWSE S19-T7S-R95W (PJ-19 Pad) - Daybreak Federal 19-7 (PJ-19) - DD - Plan #1													Offset Site Error:	0.0 ft
Survey Program: 0-MWD													Offset Well Error:	0.0 ft
Reference		Offset		Semi Major Axis			Distance						Warning	
Measured Depth	Vertical Depth	Measured Depth	Vertical Depth	Reference	Offset	Highside Toolface	Offset Wellbore Centre		Between Centres	Between Ellipses	Total Uncertainty	Separation		
(ft)	(ft)	(ft)	(ft)	(ft)	(ft)	(°)	+N/-S (ft)	+E/-W (ft)	(ft)	(ft)	Axis	Factor		
0.0	0.0	0.0	0.0	0.0	0.0	70.63	21.9	62.2	65.9					
100.0	100.0	100.0	100.0	0.1	0.1	70.63	21.9	62.2	65.9	65.6	0.27	241.966		
200.0	200.0	200.0	200.0	0.3	0.3	70.63	21.9	62.2	65.9	65.3	0.62	106.030 CC, ES		
300.0	300.0	297.9	297.8	0.5	0.5	105.55	24.2	62.9	68.1	67.2	0.98	69.541		
400.0	399.6	395.4	395.1	0.7	0.7	106.45	31.3	65.3	74.9	73.5	1.40	53.675		
500.0	498.8	492.4	491.3	1.0	1.0	107.61	43.0	69.2	86.2	84.3	1.91	45.157 SF		

Cathedral Energy Services

Anticollision Report

Company:	EnCana Oil & Gas (USA) Inc	Local Co-ordinate Reference:	Well Daybreak Federal 19-6D (PJ-19)
Project:	S. Piceance	TVD Reference:	KBE @ 5449.0ft (Original Well Elev)
Reference Site:	NWSE S19-T7S-R95W (PJ-19 Pad)	MD Reference:	KBE @ 5449.0ft (Original Well Elev)
Site Error:	0.0ft	North Reference:	True
Reference Well:	Daybreak Federal 19-6D (PJ-19)	Survey Calculation Method:	Minimum Curvature
Well Error:	0.0ft	Output errors are at	2.00 sigma
Reference Wellbore	DD	Database:	EDM 5000.1 US Multi Users DB
Reference Design:	Plan #1	Offset TVD Reference:	Offset Datum

Offset Design NWSE S19-T7S-R95W (PJ-19 Pad) - Daybreak Federal 19-7BB (PJ-19) - DD - Plan #1													Offset Site Error:	0.0 ft
Survey Program: 0-MWD													Offset Well Error:	0.0 ft
Reference		Offset		Semi Major Axis			Distance						Warning	
Measured Depth (ft)	Vertical Depth (ft)	Measured Depth (ft)	Vertical Depth (ft)	Reference (ft)	Offset (ft)	Highside Toolface (°)	Offset Wellbore Centre +N/-S (ft)	+E/-W (ft)	Between Centres (ft)	Between Ellipses (ft)	Total Uncertainty Axis	Separation Factor		
0.0	0.0	0.0	0.0	0.0	0.0	69.23	18.2	48.0	51.4					
100.0	100.0	100.0	100.0	0.1	0.1	69.23	18.2	48.0	51.4	51.1	0.27	188.643		
200.0	200.0	200.0	200.0	0.3	0.3	69.23	18.2	48.0	51.4	50.7	0.62	82.664 CC, ES		
300.0	300.0	300.0	300.0	0.5	0.5	106.58	18.2	48.0	52.0	51.1	0.98	53.214		
400.0	399.6	399.6	399.6	0.7	0.7	114.37	18.2	48.0	54.8	53.4	1.36	40.186		
500.0	498.8	498.8	498.8	1.0	0.8	125.31	18.2	48.0	61.4	59.6	1.78	34.570		
600.0	597.1	597.1	597.0	1.4	1.0	134.70	20.6	48.5	73.5	71.3	2.20	33.449 SF		
700.0	694.3	695.4	695.1	1.8	1.2	140.08	28.0	50.0	90.7	88.0	2.66	34.107		

Cathedral Energy Services

Anticollision Report

Company:	EnCana Oil & Gas (USA) Inc	Local Co-ordinate Reference:	Well Daybreak Federal 19-6D (PJ-19)
Project:	S. Piceance	TVD Reference:	KBE @ 5449.0ft (Original Well Elev)
Reference Site:	NWSE S19-T7S-R95W (PJ-19 Pad)	MD Reference:	KBE @ 5449.0ft (Original Well Elev)
Site Error:	0.0ft	North Reference:	True
Reference Well:	Daybreak Federal 19-6D (PJ-19)	Survey Calculation Method:	Minimum Curvature
Well Error:	0.0ft	Output errors are at	2.00 sigma
Reference Wellbore	DD	Database:	EDM 5000.1 US Multi Users DB
Reference Design:	Plan #1	Offset TVD Reference:	Offset Datum

Offset Design NWSE S19-T7S-R95W (PJ-19 Pad) - Daybreak Federal 19-7C (PJ-19) - DD - Plan #1													Offset Site Error: 0.0 ft			
Survey Program: 0-MWD															Offset Well Error: 0.0 ft	
Reference		Offset		Semi Major Axis			Distance							Warning		
Measured Depth (ft)	Vertical Depth (ft)	Measured Depth (ft)	Vertical Depth (ft)	Reference (ft)	Offset (ft)	Highside Toolface (°)	Offset Wellbore Centre +N/-S (ft) +E/-W (ft)		Between Centres (ft)	Between Ellipses (ft)	Total Uncertainty Axis	Separation Factor				
0.0	0.0	0.0	0.0	0.0	0.0	75.54	14.6	56.5	58.3							
100.0	100.0	100.0	100.0	0.1	0.1	75.54	14.6	56.5	58.3	58.1	0.27	214.302				
200.0	200.0	200.0	200.0	0.3	0.3	75.54	14.6	56.5	58.3	57.7	0.62	93.908 CC, ES				
300.0	300.0	300.0	300.0	0.5	0.5	112.46	14.6	56.5	59.3	58.3	0.98	60.664				
400.0	399.6	399.6	399.6	0.7	0.7	118.99	14.6	56.5	62.7	61.4	1.36	46.112				
500.0	498.8	498.8	498.8	1.0	0.8	128.15	14.6	56.5	70.0	68.2	1.77	39.609				
600.0	597.1	597.1	597.1	1.4	1.0	137.81	14.6	56.5	82.6	80.4	2.17	37.999 SF				

Cathedral Energy Services

Anticollision Report

Company:	EnCana Oil & Gas (USA) Inc	Local Co-ordinate Reference:	Well Daybreak Federal 19-6D (PJ-19)
Project:	S. Piceance	TVD Reference:	KBE @ 5449.0ft (Original Well Elev)
Reference Site:	NWSE S19-T7S-R95W (PJ-19 Pad)	MD Reference:	KBE @ 5449.0ft (Original Well Elev)
Site Error:	0.0ft	North Reference:	True
Reference Well:	Daybreak Federal 19-6D (PJ-19)	Survey Calculation Method:	Minimum Curvature
Well Error:	0.0ft	Output errors are at	2.00 sigma
Reference Wellbore	DD	Database:	EDM 5000.1 US Multi Users DB
Reference Design:	Plan #1	Offset TVD Reference:	Offset Datum

Offset Design NWSE S19-T7S-R95W (PJ-19 Pad) - Daybreak Federal 19-8C (PJ-19 Pad) - DD - Plan #1												Offset Site Error: 0.0 ft	
Survey Program: 0-MWD												Offset Well Error: 0.0 ft	
Reference		Offset		Semi Major Axis			Distance						Warning
Measured Depth	Vertical Depth	Measured Depth	Vertical Depth	Reference	Offset	Highside Toolface	Offset Wellbore Centre		Between Centres	Between Ellipses	Total Uncertainty Axis	Separation Factor	
(ft)	(ft)	(ft)	(ft)	(ft)	(ft)	(°)	+N/-S (ft)	+E/-W (ft)	(ft)	(ft)			
0.0	0.0	0.0	0.0	0.0	0.0	76.07	18.2	73.5	75.7				
100.0	100.0	100.0	100.0	0.1	0.1	76.07	18.2	73.5	75.7	75.4	0.27	277.936	
200.0	200.0	200.0	200.0	0.3	0.3	76.07	18.2	73.5	75.7	75.1	0.62	121.792 CC, ES	
300.0	300.0	296.8	296.8	0.5	0.5	111.24	20.1	75.0	78.7	77.7	0.98	80.656	
400.0	399.6	393.1	392.7	0.7	0.7	112.75	25.7	79.7	87.6	86.2	1.37	63.784 SF	

Cathedral Energy Services

Anticollision Report

Company:	EnCana Oil & Gas (USA) Inc	Local Co-ordinate Reference:	Well Daybreak Federal 19-6D (PJ-19)
Project:	S. Piceance	TVD Reference:	KBE @ 5449.0ft (Original Well Elev)
Reference Site:	NWSE S19-T7S-R95W (PJ-19 Pad)	MD Reference:	KBE @ 5449.0ft (Original Well Elev)
Site Error:	0.0ft	North Reference:	True
Reference Well:	Daybreak Federal 19-6D (PJ-19)	Survey Calculation Method:	Minimum Curvature
Well Error:	0.0ft	Output errors are at	2.00 sigma
Reference Wellbore	DD	Database:	EDM 5000.1 US Multi Users DB
Reference Design:	Plan #1	Offset TVD Reference:	Offset Datum

Offset Design NWSE S19-T7S-R95W (PJ-19 Pad) - Daybreak Federal 19-8D (PJ-19) - DD - Plan #1													Offset Site Error:	0.0 ft
Survey Program: 0-MWD													Offset Well Error:	0.0 ft
Reference		Offset		Semi Major Axis			Distance						Warning	
Measured Depth	Vertical Depth	Measured Depth	Vertical Depth	Reference	Offset	Highside Toolface	Offset Wellbore Centre		Between Centres	Between Ellipses	Total Uncertainty	Separation		
(ft)	(ft)	(ft)	(ft)	(ft)	(ft)	(°)	+N/-S (ft)	+E/-W (ft)	(ft)	(ft)	Axis	Factor		
0.0	0.0	0.0	0.0	0.0	0.0	74.25	25.5	90.4	93.9					
100.0	100.0	100.0	100.0	0.1	0.1	74.25	25.5	90.4	93.9	93.7	0.27	344.975		
200.0	200.0	200.0	200.0	0.3	0.3	74.25	25.5	90.4	93.9	93.3	0.62	151.169 CC, ES		
300.0	300.0	295.5	295.5	0.5	0.5	109.62	26.9	92.3	97.1	96.1	0.97	99.995 SF		

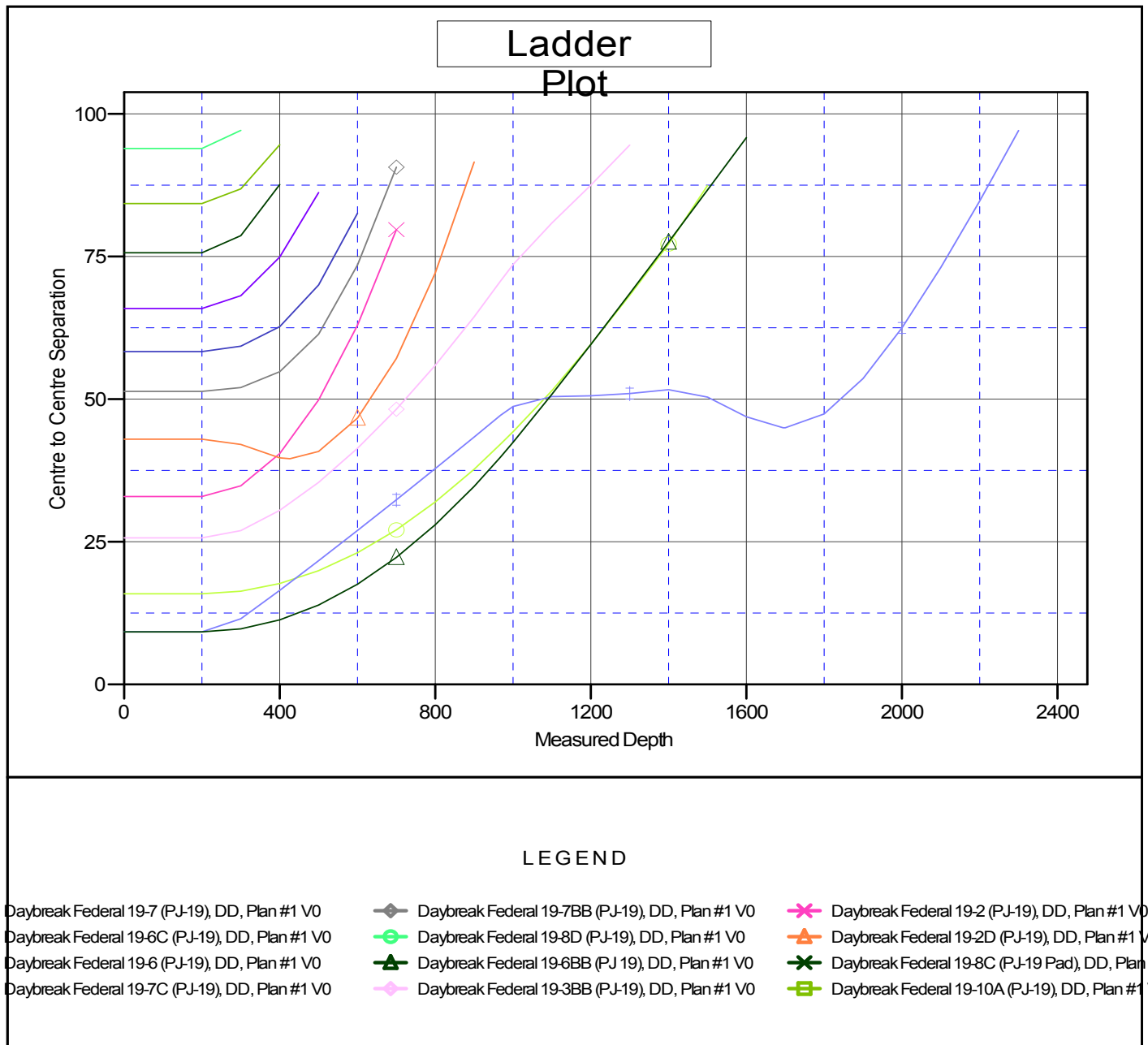
Cathedral Energy Services

Anticollision Report

Company:	EnCana Oil & Gas (USA) Inc	Local Co-ordinate Reference:	Well Daybreak Federal 19-6D (PJ-19)
Project:	S. Piceance	TVD Reference:	KBE @ 5449.0ft (Original Well Elev)
Reference Site:	NWSE S19-T7S-R95W (PJ-19 Pad)	MD Reference:	KBE @ 5449.0ft (Original Well Elev)
Site Error:	0.0ft	North Reference:	True
Reference Well:	Daybreak Federal 19-6D (PJ-19)	Survey Calculation Method:	Minimum Curvature
Well Error:	0.0ft	Output errors are at	2.00 sigma
Reference Wellbore	DD	Database:	EDM 5000.1 US Multi Users DB
Reference Design:	Plan #1	Offset TVD Reference:	Offset Datum

Reference Depths are relative to KBE @ 5449.0ft (Original Well Elev)
Offset Depths are relative to Offset Datum
Central Meridian is -105.500000 °

Coordinates are relative to: Daybreak Federal 19-6D (PJ-19)
Coordinate System is US State Plane 1983, Colorado Central Zone
Grid Convergence at Surface is: -1.60°



CC - Min centre to center distance or convergent point, SF - min separation factor, ES - min ellipse separation