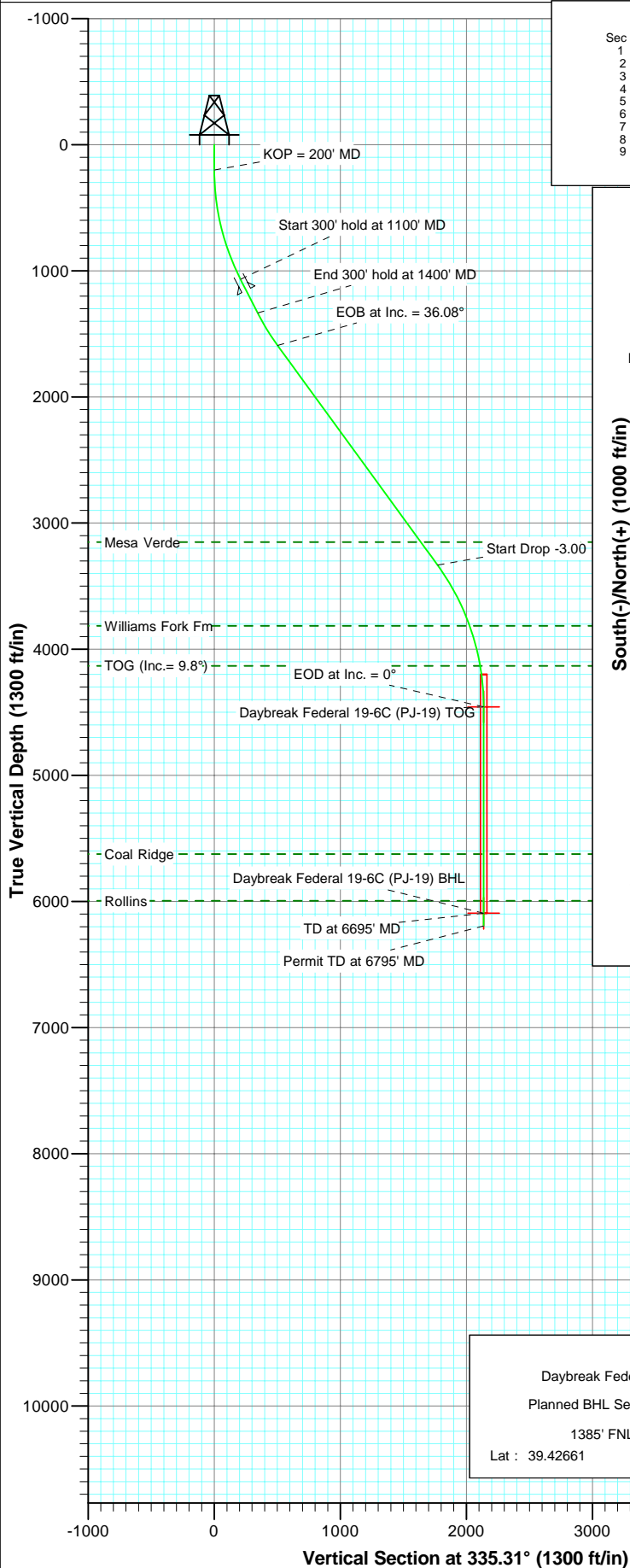
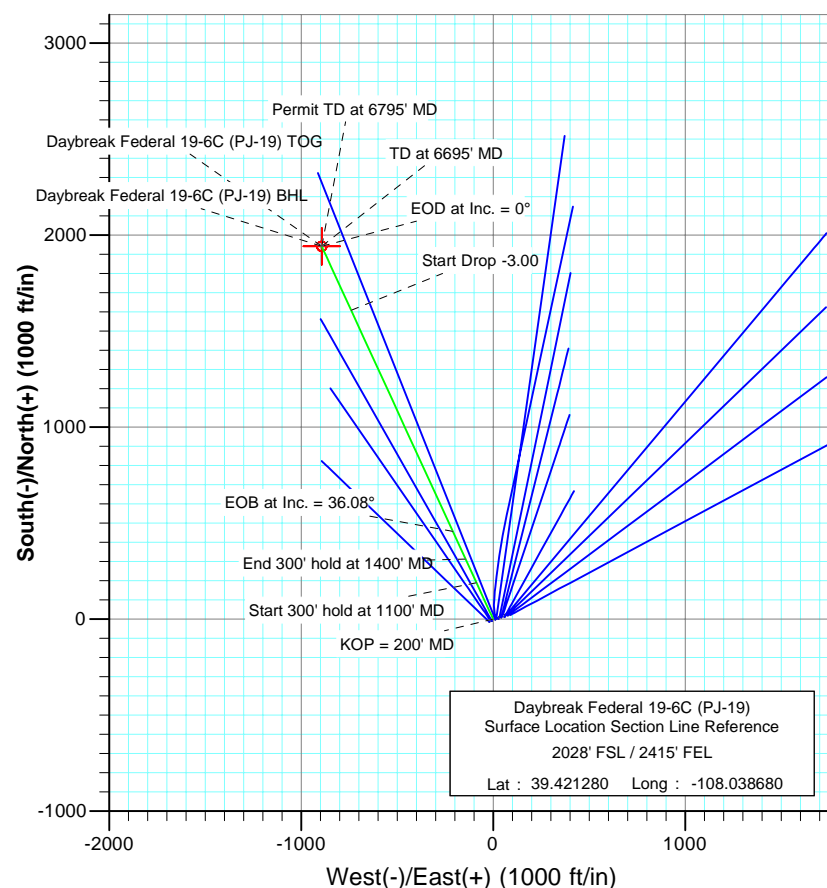




Project: S. Piceance
Site: NWSE S19-T7S-R95W (PJ-19 Pad)
Well: Daybreak Federal 19-6C (PJ-19)
Wellbore: DD
Plan: Plan #1



SECTION DETAILS										
Sec	MD	Inc	Azi	TVD	+N/-S	+E/-W	Dleg	TFace	VSection	Target
1	0.0	0.00	0.00	0.0	0.0	0.0	0.00	0.00	0.0	
2	200.0	0.00	0.00	200.0	0.0	0.0	0.00	0.00	0.0	
3	1100.0	27.00	335.31	1067.1	189.1	-87.0	3.00	335.31	208.2	
4	1400.0	27.00	335.31	1334.4	312.9	-143.8	0.00	0.00	344.4	
5	1702.6	36.08	335.31	1592.0	456.5	-209.9	3.00	-0.01	502.5	
6	3855.9	36.08	335.31	3332.3	1608.6	-739.6	0.00	0.00	1770.5	
7	5058.5	0.00	0.00	4457.0	1941.4	-892.6	3.00	180.00	2136.8	Daybreak Federal 19-6C (PJ-19) TOG
8	6695.5	0.00	0.00	6094.0	1941.4	-892.6	0.00	0.00	2136.8	Daybreak Federal 19-6C (PJ-19) BHL
9	6795.5	0.00	0.00	6194.0	1941.4	-892.6	0.00	0.00	2136.8	



FORMATION TOP DETAILS

TVDPath	MDPath	Formation
3150.0	3630.3	Mesa Verde
3815.0	4403.7	Williams Fork Fm
4132.0	4731.9	TOG (Inc. = 9.8°)
5624.0	6225.5	Coal Ridge
5994.0	6595.5	Rollins



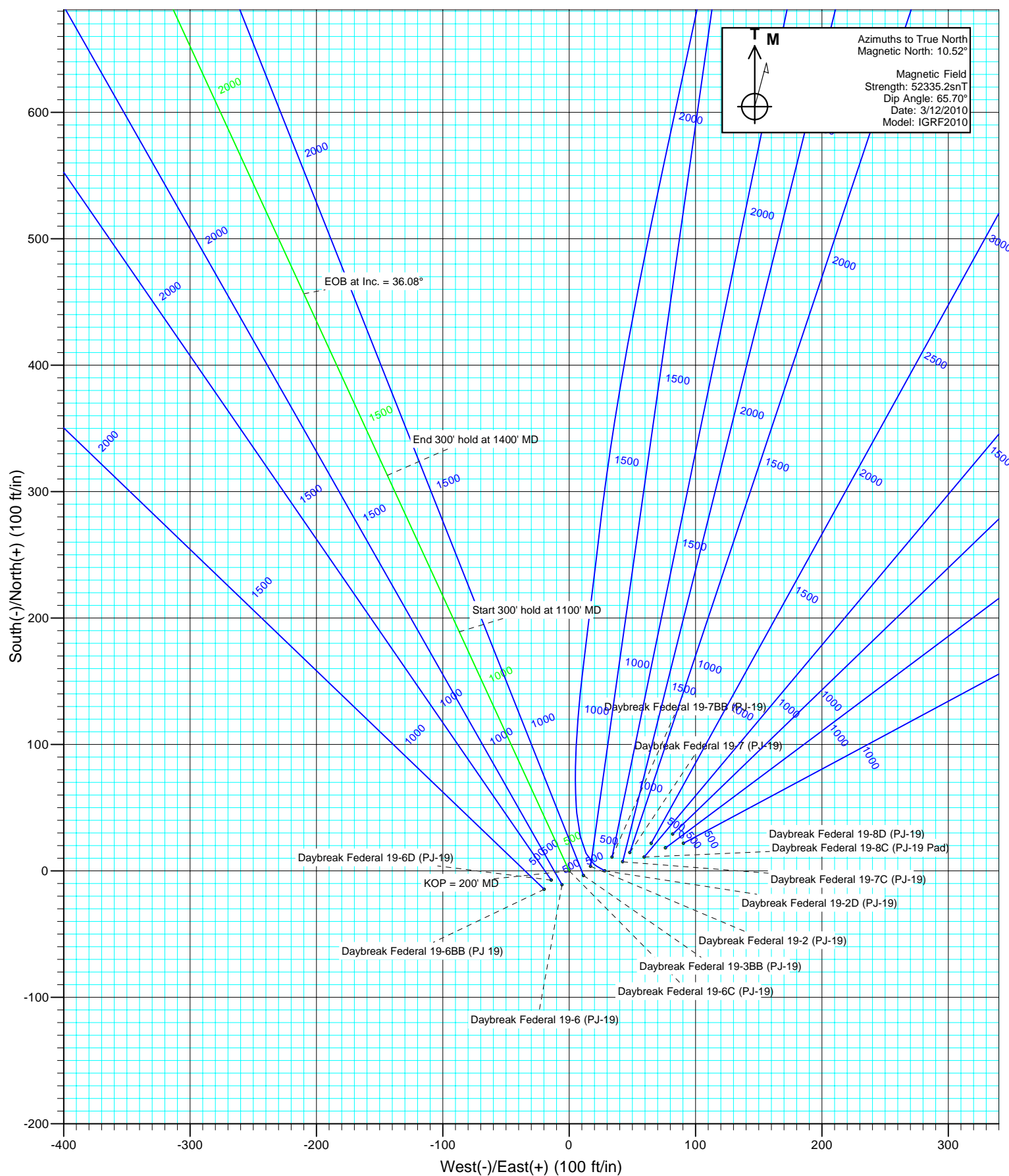
Azimuths to True North
Magnetic North: 10.52°

Magnetic Field
Strength: 52335.2nT
Dip Angle: 65.70°
Date: 3/12/2010
Model: IGRF2010

DESIGN DETAILS: Plan #1

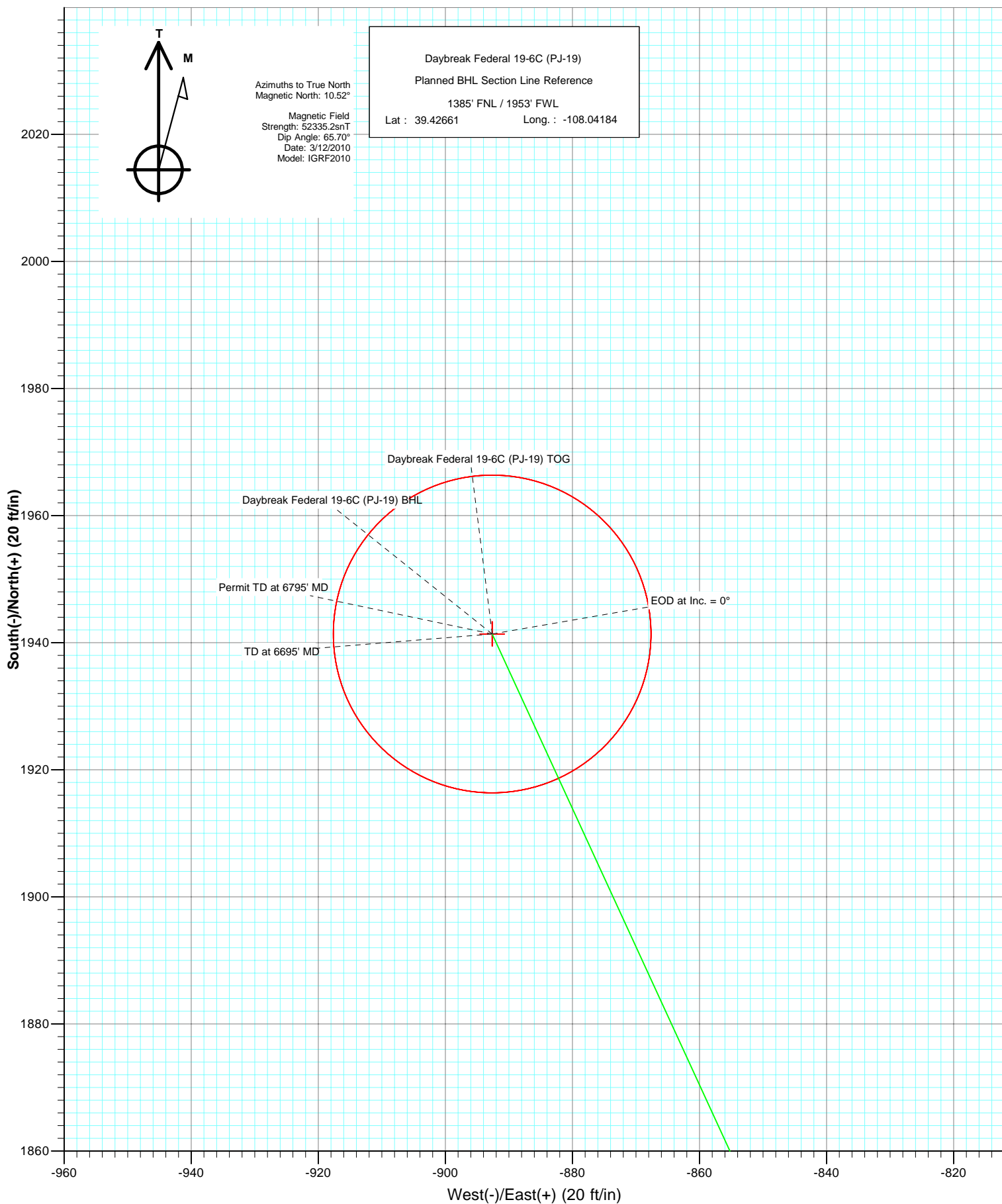
Job# 105XXX
KBE @ 5449.0ft (Original Well Elev)

Target	Azimuth	Origin Type	N/S	E/W
Daybreak Federal 19-6C (PJ-19) BHL	335.31	Slot	0.0	0.0





Project: S. Piceance
Site: NWSE S19-T7S-R95W (PJ-19 Pad)
Well: Daybreak Federal 19-6C (PJ-19)
Wellbore: DD
Plan: Plan #1



Cathedral Energy Services

Planning Report

Database:	EDM 5000.1 US Multi Users DB	Local Co-ordinate Reference:	Well Daybreak Federal 19-6C (PJ-19)
Company:	EnCana Oil & Gas (USA) Inc	TVD Reference:	KBE @ 5449.0ft (Original Well Elev)
Project:	S. Piceance	MD Reference:	KBE @ 5449.0ft (Original Well Elev)
Site:	NWSE S19-T7S-R95W (PJ-19 Pad)	North Reference:	True
Well:	Daybreak Federal 19-6C (PJ-19)	Survey Calculation Method:	Minimum Curvature
Wellbore:	DD		
Design:	Plan #1		

Project	S. Piceance, Garfield County, CO		
Map System:	US State Plane 1983	System Datum:	Mean Sea Level
Geo Datum:	North American Datum 1983		
Map Zone:	Colorado Central Zone		

Site		NWSE S19-T7S-R95W (PJ-19 Pad)			
Site Position:		Northing:	1,588,373.67 ft	Latitude:	39.421340
From:	Lat/Long	Easting:	2,283,011.65 ft	Longitude:	-108.038360
Position Uncertainty:	0.0 ft	Slot Radius:	13.200 in	Grid Convergence:	-1.60 °

Well	Daybreak Federal 19-6C (PJ-19)					
Well Position	+N/-S	0.0 ft	Northing:	1,588,354.34 ft	Latitude:	39.421280
	+E/-W	0.0 ft	Easting:	2,282,920.68 ft	Longitude:	-108.038680
Position Uncertainty		0.0 ft	Wellhead Elevation:	ft	Ground Level:	5,427.0 ft

Wellbore	DD				
Magnetics	Model Name	Sample Date	Declination	Dip Angle	Field Strength
			(°)	(°)	(nT)
	IGRF2010	3/12/2010	10.52	65.70	52,335

Design	Plan #1			
Audit Notes:				
Version:	Phase:	PLAN	Tie On Depth:	0.0
Vertical Section:	Depth From (TVD)	+N/-S	+E/-W	Direction
	(ft)	(ft)	(ft)	(°)
	0.0	0.0	0.0	335.31

Plan Sections										
Measured Depth (ft)	Inclination (°)	Azimuth (°)	Vertical Depth (ft)	+N/-S (ft)	+E/-W (ft)	Dogleg Rate (°/100ft)	Build Rate (°/100ft)	Turn Rate (°/100ft)	TFO (°)	Target
0.0	0.00	0.00	0.0	0.0	0.0	0.00	0.00	0.00	0.00	
200.0	0.00	0.00	200.0	0.0	0.0	0.00	0.00	0.00	0.00	
1,100.0	27.00	335.31	1,067.1	189.1	-87.0	3.00	3.00	0.00	335.31	
1,400.0	27.00	335.31	1,334.4	312.9	-143.8	0.00	0.00	0.00	0.00	
1,702.6	36.08	335.31	1,592.0	456.5	-209.9	3.00	3.00	0.00	-0.01	
3,855.9	36.08	335.31	3,332.3	1,608.6	-739.6	0.00	0.00	0.00	0.00	
5,058.5	0.00	0.00	4,457.0	1,941.4	-892.6	3.00	-3.00	0.00	180.00	Daybreak Federal 19-
6,695.5	0.00	0.00	6,094.0	1,941.4	-892.6	0.00	0.00	0.00	0.00	Daybreak Federal 19-
6,795.5	0.00	0.00	6,194.0	1,941.4	-892.6	0.00	0.00	0.00	0.00	

Cathedral Energy Services

Planning Report

Database:	EDM 5000.1 US Multi Users DB	Local Co-ordinate Reference:	Well Daybreak Federal 19-6C (PJ-19)
Company:	EnCana Oil & Gas (USA) Inc	TVD Reference:	KBE @ 5449.0ft (Original Well Elev)
Project:	S. Piceance	MD Reference:	KBE @ 5449.0ft (Original Well Elev)
Site:	NWSE S19-T7S-R95W (PJ-19 Pad)	North Reference:	True
Well:	Daybreak Federal 19-6C (PJ-19)	Survey Calculation Method:	Minimum Curvature
Wellbore:	DD		
Design:	Plan #1		

Planned Survey

Measured Depth (ft)	Inclination (°)	Azimuth (°)	Vertical Depth (ft)	+N/-S (ft)	+E/-W (ft)	Vertical Section (ft)	Dogleg Rate (°/100ft)	Build Rate (°/100ft)	Comments / Formations
0.0	0.00	0.00	0.0	0.0	0.0	0.0	0.00	0.00	
100.0	0.00	0.00	100.0	0.0	0.0	0.0	0.00	0.00	
200.0	0.00	0.00	200.0	0.0	0.0	0.0	0.00	0.00	KOP = 200' MD
300.0	3.00	335.31	300.0	2.4	-1.1	2.6	3.00	3.00	
400.0	6.00	335.31	399.6	9.5	-4.4	10.5	3.00	3.00	
500.0	9.00	335.31	498.8	21.4	-9.8	23.5	3.00	3.00	
600.0	12.00	335.31	597.1	37.9	-17.4	41.7	3.00	3.00	
700.0	15.00	335.31	694.3	59.1	-27.2	65.1	3.00	3.00	
800.0	18.00	335.31	790.2	84.9	-39.0	93.5	3.00	3.00	
900.0	21.00	335.31	884.4	115.3	-53.0	126.9	3.00	3.00	
1,000.0	24.00	335.31	976.8	150.0	-69.0	165.1	3.00	3.00	
1,100.0	27.00	335.31	1,067.1	189.1	-87.0	208.2	3.00	3.00	Start 300' hold at 1100' MD
1,200.0	27.00	335.31	1,156.2	230.4	-105.9	253.6	0.00	0.00	Surface Casing
1,300.0	27.00	335.31	1,245.3	271.6	-124.9	299.0	0.00	0.00	
1,400.0	27.00	335.31	1,334.4	312.9	-143.8	344.4	0.00	0.00	End 300' hold at 1400' MD
1,500.0	30.00	335.31	1,422.2	356.2	-163.8	392.1	3.00	3.00	
1,600.0	33.00	335.31	1,507.5	403.7	-185.6	444.3	3.00	3.00	
1,700.0	36.00	335.31	1,589.9	455.1	-209.3	500.9	3.00	3.00	
1,702.6	36.08	335.31	1,592.0	456.5	-209.9	502.5	3.00	3.00	EOB at Inc. = 36.08°
1,800.0	36.08	335.31	1,670.7	508.7	-233.9	559.8	0.00	0.00	
1,900.0	36.08	335.31	1,751.5	562.2	-258.5	618.7	0.00	0.00	
2,000.0	36.08	335.31	1,832.4	615.7	-283.1	677.6	0.00	0.00	
2,100.0	36.08	335.31	1,913.2	669.2	-307.7	736.5	0.00	0.00	
2,200.0	36.08	335.31	1,994.0	722.7	-332.3	795.4	0.00	0.00	
2,300.0	36.08	335.31	2,074.8	776.2	-356.9	854.3	0.00	0.00	
2,400.0	36.08	335.31	2,155.6	829.7	-381.5	913.2	0.00	0.00	
2,500.0	36.08	335.31	2,236.5	883.2	-406.1	972.0	0.00	0.00	
2,600.0	36.08	335.31	2,317.3	936.7	-430.7	1,030.9	0.00	0.00	
2,700.0	36.08	335.31	2,398.1	990.2	-455.3	1,089.8	0.00	0.00	
2,800.0	36.08	335.31	2,478.9	1,043.7	-479.9	1,148.7	0.00	0.00	
2,900.0	36.08	335.31	2,559.8	1,097.2	-504.5	1,207.6	0.00	0.00	
3,000.0	36.08	335.31	2,640.6	1,150.7	-529.1	1,266.5	0.00	0.00	
3,100.0	36.08	335.31	2,721.4	1,204.2	-553.7	1,325.4	0.00	0.00	
3,200.0	36.08	335.31	2,802.2	1,257.7	-578.3	1,384.3	0.00	0.00	
3,300.0	36.08	335.31	2,883.0	1,311.2	-602.9	1,443.2	0.00	0.00	
3,400.0	36.08	335.31	2,963.9	1,364.7	-627.5	1,502.0	0.00	0.00	
3,500.0	36.08	335.31	3,044.7	1,418.2	-652.1	1,560.9	0.00	0.00	
3,600.0	36.08	335.31	3,125.5	1,471.7	-676.7	1,619.8	0.00	0.00	
3,630.3	36.08	335.31	3,150.0	1,487.9	-684.1	1,637.7	0.00	0.00	Mesa Verde
3,700.0	36.08	335.31	3,206.3	1,525.2	-701.3	1,678.7	0.00	0.00	
3,800.0	36.08	335.31	3,287.2	1,578.7	-725.9	1,737.6	0.00	0.00	
3,855.9	36.08	335.31	3,332.3	1,608.6	-739.6	1,770.5	0.00	0.00	Start Drop -3.00
3,900.0	34.75	335.31	3,368.3	1,631.8	-750.3	1,796.1	3.00	-3.00	
4,000.0	31.75	335.31	3,451.9	1,681.7	-773.2	1,850.9	3.00	-3.00	
4,100.0	28.75	335.31	3,538.3	1,727.4	-794.3	1,901.3	3.00	-3.00	
4,200.0	25.75	335.31	3,627.2	1,769.0	-813.4	1,947.1	3.00	-3.00	
4,300.0	22.75	335.31	3,718.3	1,806.3	-830.5	1,988.1	3.00	-3.00	
4,400.0	19.75	335.31	3,811.5	1,839.3	-845.7	2,024.4	3.00	-3.00	
4,403.7	19.64	335.31	3,815.0	1,840.4	-846.2	2,025.6	3.00	-3.00	Williams Fork Fm
4,500.0	16.75	335.31	3,906.5	1,867.7	-858.8	2,055.7	3.00	-3.00	
4,600.0	13.75	335.31	4,002.9	1,891.6	-869.8	2,082.0	3.00	-3.00	
4,700.0	10.75	335.31	4,100.6	1,910.9	-878.6	2,103.2	3.00	-3.00	

Cathedral Energy Services

Planning Report

Database:	EDM 5000.1 US Multi Users DB	Local Co-ordinate Reference:	Well Daybreak Federal 19-6C (PJ-19)
Company:	EnCana Oil & Gas (USA) Inc	TVD Reference:	KBE @ 5449.0ft (Original Well Elev)
Project:	S. Piceance	MD Reference:	KBE @ 5449.0ft (Original Well Elev)
Site:	NWSE S19-T7S-R95W (PJ-19 Pad)	North Reference:	True
Well:	Daybreak Federal 19-6C (PJ-19)	Survey Calculation Method:	Minimum Curvature
Wellbore:	DD		
Design:	Plan #1		

Planned Survey

Measured Depth (ft)	Inclination (°)	Azimuth (°)	Vertical Depth (ft)	+N/-S (ft)	+E/-W (ft)	Vertical Section (ft)	Dogleg Rate (°/100ft)	Build Rate (°/100ft)	Comments / Formations
4,731.9	9.80	335.31	4,132.0	1,916.1	-881.0	2,108.9	3.00	-3.00	TOG (Inc.= 9.8°)
4,800.0	7.75	335.31	4,199.3	1,925.5	-885.3	2,119.3	3.00	-3.00	
4,900.0	4.75	335.31	4,298.7	1,935.4	-889.9	2,130.2	3.00	-3.00	
5,000.0	1.75	335.31	4,398.5	1,940.6	-892.3	2,135.9	3.00	-3.00	
5,058.5	0.00	0.00	4,457.0	1,941.4	-892.6	2,136.8	3.00	-3.00	EOD at Inc. = 0° - Daybreak Federal 19-6C (PJ-19)
5,100.0	0.00	0.00	4,498.5	1,941.4	-892.6	2,136.8	0.00	0.00	
5,200.0	0.00	0.00	4,598.5	1,941.4	-892.6	2,136.8	0.00	0.00	
5,300.0	0.00	0.00	4,698.5	1,941.4	-892.6	2,136.8	0.00	0.00	
5,400.0	0.00	0.00	4,798.5	1,941.4	-892.6	2,136.8	0.00	0.00	
5,500.0	0.00	0.00	4,898.5	1,941.4	-892.6	2,136.8	0.00	0.00	
5,600.0	0.00	0.00	4,998.5	1,941.4	-892.6	2,136.8	0.00	0.00	
5,700.0	0.00	0.00	5,098.5	1,941.4	-892.6	2,136.8	0.00	0.00	
5,800.0	0.00	0.00	5,198.5	1,941.4	-892.6	2,136.8	0.00	0.00	
5,900.0	0.00	0.00	5,298.5	1,941.4	-892.6	2,136.8	0.00	0.00	
6,000.0	0.00	0.00	5,398.5	1,941.4	-892.6	2,136.8	0.00	0.00	
6,100.0	0.00	0.00	5,498.5	1,941.4	-892.6	2,136.8	0.00	0.00	
6,200.0	0.00	0.00	5,598.5	1,941.4	-892.6	2,136.8	0.00	0.00	
6,225.5	0.00	0.00	5,624.0	1,941.4	-892.6	2,136.8	0.00	0.00	Coal Ridge
6,300.0	0.00	0.00	5,698.5	1,941.4	-892.6	2,136.8	0.00	0.00	
6,400.0	0.00	0.00	5,798.5	1,941.4	-892.6	2,136.8	0.00	0.00	
6,500.0	0.00	0.00	5,898.5	1,941.4	-892.6	2,136.8	0.00	0.00	
6,595.5	0.00	0.00	5,994.0	1,941.4	-892.6	2,136.8	0.00	0.00	Rollins
6,600.0	0.00	0.00	5,998.5	1,941.4	-892.6	2,136.8	0.00	0.00	
6,695.5	0.00	0.00	6,094.0	1,941.4	-892.6	2,136.8	0.00	0.00	TD at 6695' MD - Daybreak Federal 19-6C (PJ-19)
6,700.0	0.00	0.00	6,098.5	1,941.4	-892.6	2,136.8	0.00	0.00	
6,795.5	0.00	0.00	6,194.0	1,941.4	-892.6	2,136.8	0.00	0.00	Permit TD at 6795' MD

Targets

Target Name	Dip Angle (°)	Dip Dir. (°)	TVD (ft)	+N/-S (ft)	+E/-W (ft)	Northing (ft)	Easting (ft)	Latitude	Longitude
- hit/miss target									
- Shape									
Daybreak Federal 19-6C	0.00	0.00	6,094.0	1,941.4	-892.6	1,590,319.91	2,282,082.63	39.426610	-108.041840
- plan hits target center									
- Circle (radius 25.0)									
Daybreak Federal 19-6C	0.00	0.00	4,457.0	1,941.4	-892.6	1,590,319.91	2,282,082.63	39.426610	-108.041840
- plan hits target center									
- Point									

Casing Points

Measured Depth (ft)	Vertical Depth (ft)	Name	Casing Diameter (in)	Hole Diameter (in)
1,200.0	1,156.2	Surface Casing	5.500	6.000

Cathedral Energy Services

Planning Report

Database:	EDM 5000.1 US Multi Users DB	Local Co-ordinate Reference:	Well Daybreak Federal 19-6C (PJ-19)
Company:	EnCana Oil & Gas (USA) Inc	TVD Reference:	KBE @ 5449.0ft (Original Well Elev)
Project:	S. Piceance	MD Reference:	KBE @ 5449.0ft (Original Well Elev)
Site:	NWSE S19-T7S-R95W (PJ-19 Pad)	North Reference:	True
Well:	Daybreak Federal 19-6C (PJ-19)	Survey Calculation Method:	Minimum Curvature
Wellbore:	DD		
Design:	Plan #1		

Formations						
Measured Depth (ft)	Vertical Depth (ft)	Name	Lithology	Dip (°)	Dip Direction (°)	
3,630.3	3,150.0	Mesa Verde		0.00		
4,403.7	3,815.0	Williams Fork Fm		0.00		
4,731.9	4,132.0	TOG (Inc.= 9.8°)		0.00		
6,225.5	5,624.0	Coal Ridge		0.00		
6,595.5	5,994.0	Rollins		0.00		

Plan Annotations					
Measured Depth (ft)	Vertical Depth (ft)	Local Coordinates			
		+N/-S (ft)	+E/-W (ft)	Comment	
200.0	200.0	0.0	0.0	KOP = 200' MD	
1,100.0	1,067.1	189.1	-87.0	Start 300' hold at 1100' MD	
1,400.0	1,334.4	312.9	-143.8	End 300' hold at 1400' MD	
1,702.6	1,592.0	456.5	-209.9	EOB at Inc. = 36.08°	
3,855.9	3,332.3	1,608.6	-739.6	Start Drop -3.00	
5,058.5	4,457.0	1,941.4	-892.6	EOD at Inc. = 0°	
6,695.5	6,094.0	1,941.4	-892.6	TD at 6695' MD	
6,795.5	6,194.0	1,941.4	-892.6	Permit TD at 6795' MD	

EnCana Oil & Gas (USA) Inc

S. Piceance

NWSE S19-T7S-R95W (PJ-19 Pad)

Daybreak Federal 19-6C (PJ-19)

DD

Plan #1

Anticollision Report

22 March, 2010

Cathedral Energy Services

Anticollision Report

Company:	EnCana Oil & Gas (USA) Inc	Local Co-ordinate Reference:	Well Daybreak Federal 19-6C (PJ-19)
Project:	S. Piceance	TVD Reference:	KBE @ 5449.0ft (Original Well Elev)
Reference Site:	NWSE S19-T7S-R95W (PJ-19 Pad)	MD Reference:	KBE @ 5449.0ft (Original Well Elev)
Site Error:	0.0ft	North Reference:	True
Reference Well:	Daybreak Federal 19-6C (PJ-19)	Survey Calculation Method:	Minimum Curvature
Well Error:	0.0ft	Output errors are at	2.00 sigma
Reference Wellbore	DD	Database:	EDM 5000.1 US Multi Users DB
Reference Design:	Plan #1	Offset TVD Reference:	Offset Datum

Reference	Plan #1		
Filter type:	NO GLOBAL FILTER: Using user defined selection & filtering criteria		
Interpolation Method:	Stations	Error Model:	Systematic Ellipse
Depth Range:	0.0 to 99,999.0ft	Scan Method:	Closest Approach 3D
Results Limited by:	Maximum center-center distance of 100.0ft	Error Surface:	Elliptical Conic
Warning Levels Evaluated at:	2.00 Sigma		

Survey Tool Program	Date	3/22/2010		
From (ft)	To (ft)	Survey (Wellbore)	Tool Name	Description
0.0	6,795.5	Plan #1 (DD)	MWD	Geolink MWD

Summary						
Site Name	Reference Measured Depth (ft)	Offset Measured Depth (ft)	Distance Between Centres (ft)	Distance Between Ellipses (ft)	Separation Factor	Warning
NWSE S19-T7S-R95W (PJ-19 Pad)						
Daybreak Federal 19-10A (PJ-19) - DD - Plan #1	200.0	200.0	68.6	67.9	110.327	CC, ES
Daybreak Federal 19-10A (PJ-19) - DD - Plan #1	500.0	490.9	88.2	86.3	46.531	SF
Daybreak Federal 19-2 (PJ-19) - DD - Plan #1	200.0	200.0	17.3	16.7	27.901	CC, ES
Daybreak Federal 19-2 (PJ-19) - DD - Plan #1	600.0	597.4	40.8	38.1	15.345	SF
Daybreak Federal 19-2D (PJ-19) - DD - Plan #1	446.4	448.2	23.7	22.2	15.116	CC, ES
Daybreak Federal 19-2D (PJ-19) - DD - Plan #1	700.0	701.5	35.9	33.0	12.349	SF
Daybreak Federal 19-3BB (PJ-19) - DD - Plan #1	200.0	200.0	11.9	11.3	19.108	CC, ES
Daybreak Federal 19-3BB (PJ-19) - DD - Plan #1	2,400.0	2,431.7	57.9	23.0	1.662	SF
Daybreak Federal 19-6 (PJ-19) - DD - Plan #1	200.0	200.0	12.3	11.7	19.798	CC, ES
Daybreak Federal 19-6 (PJ-19) - DD - Plan #1	1,702.6	1,720.5	95.1	84.2	8.713	SF
Daybreak Federal 19-6BB (PJ 19) - DD - Plan #1	200.0	200.0	24.6	23.9	39.536	CC, ES
Daybreak Federal 19-6BB (PJ 19) - DD - Plan #1	1,000.0	994.6	85.2	78.1	12.029	SF
Daybreak Federal 19-6D (PJ-19) - DD - Plan #1	200.0	200.0	15.9	15.3	25.578	CC, ES
Daybreak Federal 19-6D (PJ-19) - DD - Plan #1	1,100.0	1,097.9	51.5	42.7	5.861	SF
Daybreak Federal 19-7 (PJ-19) - DD - Plan #1	200.0	200.0	50.2	49.6	80.772	CC, ES
Daybreak Federal 19-7 (PJ-19) - DD - Plan #1	700.0	688.2	96.6	93.2	28.411	SF
Daybreak Federal 19-7BB (PJ-19) - DD - Plan #1	200.0	200.0	35.6	35.0	57.324	CC, ES
Daybreak Federal 19-7BB (PJ-19) - DD - Plan #1	500.0	498.8	45.0	43.2	25.420	SF
Daybreak Federal 19-7C (PJ-19) - DD - Plan #1	200.0	200.0	43.0	42.4	69.200	CC, ES
Daybreak Federal 19-7C (PJ-19) - DD - Plan #1	500.0	498.8	54.1	52.3	30.656	SF
Daybreak Federal 19-8 (PJ-19) - DD - Plan #1	200.0	200.0	87.0	86.3	139.945	CC, ES
Daybreak Federal 19-8 (PJ-19) - DD - Plan #1	400.0	391.4	97.2	95.8	70.988	SF
Daybreak Federal 19-8BB (PJ-19) - DD - Plan #1	200.0	200.0	93.0	92.4	149.684	CC, ES
Daybreak Federal 19-8BB (PJ-19) - DD - Plan #1	300.0	295.4	95.9	95.0	98.797	SF
Daybreak Federal 19-8C (PJ-19 Pad) - DD - Plan #1	200.0	200.0	60.3	59.7	97.086	CC, ES
Daybreak Federal 19-8C (PJ-19 Pad) - DD - Plan #1	500.0	490.9	84.1	82.2	44.812	SF
Daybreak Federal 19-8D (PJ-19) - DD - Plan #1	200.0	200.0	78.4	77.8	126.210	CC, ES
Daybreak Federal 19-8D (PJ-19) - DD - Plan #1	400.0	391.9	89.9	88.5	65.760	SF

CC - Min centre to center distance or convergent point, SF - min separation factor, ES - min ellipse separation

Cathedral Energy Services

Anticollision Report

Company:	EnCana Oil & Gas (USA) Inc	Local Co-ordinate Reference:	Well Daybreak Federal 19-6C (PJ-19)
Project:	S. Piceance	TVD Reference:	KBE @ 5449.0ft (Original Well Elev)
Reference Site:	NWSE S19-T7S-R95W (PJ-19 Pad)	MD Reference:	KBE @ 5449.0ft (Original Well Elev)
Site Error:	0.0ft	North Reference:	True
Reference Well:	Daybreak Federal 19-6C (PJ-19)	Survey Calculation Method:	Minimum Curvature
Well Error:	0.0ft	Output errors are at	2.00 sigma
Reference Wellbore	DD	Database:	EDM 5000.1 US Multi Users DB
Reference Design:	Plan #1	Offset TVD Reference:	Offset Datum

Offset Design NWSE S19-T7S-R95W (PJ-19 Pad) - Daybreak Federal 19-10A (PJ-19) - DD - Plan #1													Offset Site Error:	0.0 ft
Survey Program: 0-MWD													Offset Well Error:	0.0 ft
Reference		Offset		Semi Major Axis			Distance					Separation Factor	Warning	
Measured Depth (ft)	Vertical Depth (ft)	Measured Depth (ft)	Vertical Depth (ft)	Reference (ft)	Offset (ft)	Highside Toolface (°)	Offset Wellbore Centre +N/-S (ft)	+E/-W (ft)	Between Centres (ft)	Between Ellipses (ft)	Total Uncertainty Axis			
0.0	0.0	0.0	0.0	0.0	0.0	71.41	21.8	65.0	68.6					
100.0	100.0	100.0	100.0	0.1	0.1	71.41	21.8	65.0	68.6	68.3	0.27	251.772		
200.0	200.0	200.0	200.0	0.3	0.3	71.41	21.8	65.0	68.6	67.9	0.62	110.327 CC, ES		
300.0	300.0	297.4	297.3	0.5	0.5	96.73	24.0	66.2	70.7	69.7	0.98	72.292		
400.0	399.6	394.4	394.1	0.7	0.7	98.40	30.5	69.8	77.2	75.9	1.39	55.586		
500.0	498.8	490.9	489.8	1.0	1.0	100.58	41.2	75.7	88.2	86.3	1.90	46.531 SF		

Cathedral Energy Services

Anticollision Report

Company:	EnCana Oil & Gas (USA) Inc	Local Co-ordinate Reference:	Well Daybreak Federal 19-6C (PJ-19)
Project:	S. Piceance	TVD Reference:	KBE @ 5449.0ft (Original Well Elev)
Reference Site:	NWSE S19-T7S-R95W (PJ-19 Pad)	MD Reference:	KBE @ 5449.0ft (Original Well Elev)
Site Error:	0.0ft	North Reference:	True
Reference Well:	Daybreak Federal 19-6C (PJ-19)	Survey Calculation Method:	Minimum Curvature
Well Error:	0.0ft	Output errors are at	2.00 sigma
Reference Wellbore	DD	Database:	EDM 5000.1 US Multi Users DB
Reference Design:	Plan #1	Offset TVD Reference:	Offset Datum

Offset Design NWSE S19-T7S-R95W (PJ-19 Pad) - Daybreak Federal 19-2 (PJ-19) - DD - Plan #1													Offset Site Error:	0.0 ft
Survey Program: 0-MWD													Offset Well Error:	0.0 ft
Reference		Offset		Semi Major Axis			Distance					Separation Factor	Warning	
Measured Depth (ft)	Vertical Depth (ft)	Measured Depth (ft)	Vertical Depth (ft)	Reference (ft)	Offset (ft)	Highside Toolface (°)	Offset Wellbore Centre +N/-S (ft)	+E/-W (ft)	Between Centres (ft)	Between Ellipses (ft)	Total Uncertainty Axis			
0.0	0.0	0.0	0.0	0.0	0.0	77.89	3.6	17.0	17.3					
100.0	100.0	100.0	100.0	0.1	0.1	77.89	3.6	17.0	17.3	17.1	0.27	63.672		
200.0	200.0	200.0	200.0	0.3	0.3	77.89	3.6	17.0	17.3	16.7	0.62	27.901 CC, ES		
300.0	300.0	299.7	299.6	0.5	0.5	102.86	6.2	17.3	18.8	17.8	0.99	19.084		
400.0	399.6	399.2	398.8	0.7	0.7	103.46	13.9	18.4	23.2	21.8	1.42	16.369		
500.0	498.8	498.5	497.3	1.0	1.0	104.04	26.7	20.2	30.5	28.6	1.97	15.537		
600.0	597.1	597.4	594.5	1.4	1.3	104.44	44.4	22.7	40.8	38.1	2.66	15.345 SF		
700.0	694.3	695.8	690.3	1.8	1.8	104.64	67.0	25.9	53.8	50.3	3.50	15.371		
800.0	790.2	793.6	784.1	2.3	2.3	104.69	94.2	29.8	69.7	65.2	4.51	15.469		
900.0	884.4	890.7	875.8	3.0	2.9	104.61	126.0	34.3	88.3	82.7	5.67	15.586		

Cathedral Energy Services

Anticollision Report

Company:	EnCana Oil & Gas (USA) Inc	Local Co-ordinate Reference:	Well Daybreak Federal 19-6C (PJ-19)
Project:	S. Piceance	TVD Reference:	KBE @ 5449.0ft (Original Well Elev)
Reference Site:	NWSE S19-T7S-R95W (PJ-19 Pad)	MD Reference:	KBE @ 5449.0ft (Original Well Elev)
Site Error:	0.0ft	North Reference:	True
Reference Well:	Daybreak Federal 19-6C (PJ-19)	Survey Calculation Method:	Minimum Curvature
Well Error:	0.0ft	Output errors are at	2.00 sigma
Reference Wellbore	DD	Database:	EDM 5000.1 US Multi Users DB
Reference Design:	Plan #1	Offset TVD Reference:	Offset Datum

Offset Design NWSE S19-T7S-R95W (PJ-19 Pad) - Daybreak Federal 19-2D (PJ-19) - DD - Plan #1												Offset Site Error: 0.0 ft	
Survey Program: 0-MWD												Offset Well Error: 0.0 ft	
Reference		Offset		Semi Major Axis			Distance						Warning
Measured Depth	Vertical Depth	Measured Depth	Vertical Depth	Reference	Offset	Highside Toolface	Offset Wellbore Centre		Between Centres	Between Ellipses	Total Uncertainty	Separation	
(ft)	(ft)	(ft)	(ft)	(ft)	(ft)	(°)	+N/-S (ft)	+E/-W (ft)	(ft)	(ft)	Axis	Factor	
0.0	0.0	0.0	0.0	0.0	0.0	90.00	0.0	28.3	28.3				
100.0	100.0	100.0	100.0	0.1	0.1	90.00	0.0	28.3	28.3	28.0	0.27	103.757	
200.0	200.0	200.0	200.0	0.3	0.3	90.00	0.0	28.3	28.3	27.6	0.62	45.467	
300.0	300.0	301.3	301.2	0.5	0.5	116.98	1.3	25.9	27.1	26.1	0.98	27.585	
400.0	399.6	401.9	401.5	0.7	0.7	124.55	5.5	19.4	24.2	22.8	1.37	17.690	
446.4	445.8	448.2	447.7	0.8	0.8	128.58	8.8	16.3	23.7	22.2	1.57	15.116	CC, ES
500.0	498.8	501.7	500.8	1.0	0.9	132.48	14.0	13.3	24.3	22.5	1.79	13.577	
600.0	597.1	601.7	599.7	1.4	1.2	136.40	27.6	8.8	28.3	26.1	2.28	12.416	
700.0	694.3	701.5	697.8	1.8	1.6	136.39	45.9	6.0	35.9	33.0	2.91	12.349	SF
800.0	790.2	801.0	794.5	2.3	2.0	134.31	69.0	4.9	47.0	43.2	3.72	12.626	
900.0	884.4	899.9	889.5	3.0	2.5	131.60	96.7	5.5	61.6	56.8	4.73	13.013	
1,000.0	976.8	998.0	982.2	3.7	3.1	128.92	128.8	7.7	79.8	73.8	5.93	13.447	

Cathedral Energy Services

Anticollision Report

Company:	EnCana Oil & Gas (USA) Inc	Local Co-ordinate Reference:	Well Daybreak Federal 19-6C (PJ-19)
Project:	S. Piceance	TVD Reference:	KBE @ 5449.0ft (Original Well Elev)
Reference Site:	NWSE S19-T7S-R95W (PJ-19 Pad)	MD Reference:	KBE @ 5449.0ft (Original Well Elev)
Site Error:	0.0ft	North Reference:	True
Reference Well:	Daybreak Federal 19-6C (PJ-19)	Survey Calculation Method:	Minimum Curvature
Well Error:	0.0ft	Output errors are at	2.00 sigma
Reference Wellbore	DD	Database:	EDM 5000.1 US Multi Users DB
Reference Design:	Plan #1	Offset TVD Reference:	Offset Datum

Offset Design NWSE S19-T7S-R95W (PJ-19 Pad) - Daybreak Federal 19-3BB (PJ-19) - DD - Plan #1												Offset Site Error: 0.0 ft			
Survey Program: 0-MWD														Offset Well Error: 0.0 ft	
Reference		Offset		Semi Major Axis			Distance						Warning		
Measured Depth (ft)	Vertical Depth (ft)	Measured Depth (ft)	Vertical Depth (ft)	Reference (ft)	Offset (ft)	Highside Toolface (°)	Offset Wellbore Centre +N/-S (ft)	+E/-W (ft)	Between Centres (ft)	Between Ellipses (ft)	Total Uncertainty Axis	Separation Factor			
0.0	0.0	0.0	0.0	0.0	0.0	107.87	-3.6	11.3	11.9						
100.0	100.0	100.0	100.0	0.1	0.1	107.87	-3.6	11.3	11.9	11.6	0.27	43.605			
200.0	200.0	200.0	200.0	0.3	0.3	107.87	-3.6	11.3	11.9	11.3	0.62	19.108	CC, ES		
300.0	300.0	300.0	300.0	0.5	0.5	140.56	-3.6	11.3	13.8	12.8	0.97	14.156			
400.0	399.6	400.5	400.4	0.7	0.7	150.72	-1.2	10.3	18.2	16.9	1.33	13.647			
500.0	498.8	501.3	500.9	1.0	0.9	156.14	6.2	7.4	23.0	21.3	1.70	13.533			
600.0	597.1	602.4	601.1	1.4	1.2	159.07	18.6	2.5	28.1	26.0	2.08	13.466			
700.0	694.3	703.8	700.8	1.8	1.5	160.62	35.9	-4.4	33.2	30.7	2.49	13.349			
800.0	790.2	805.4	799.5	2.3	2.0	161.31	58.1	-13.2	38.4	35.4	2.92	13.146			
900.0	884.4	907.3	897.1	3.0	2.5	161.46	85.3	-24.0	43.5	40.1	3.39	12.839			
1,000.0	976.8	1,009.4	993.2	3.7	3.1	161.22	117.4	-36.8	48.7	44.8	3.92	12.424			
1,100.0	1,067.1	1,111.6	1,087.4	4.5	3.8	160.72	154.2	-51.4	53.9	49.3	4.52	11.927			
1,200.0	1,156.2	1,211.4	1,178.6	5.3	4.6	160.44	191.9	-66.3	59.6	54.4	5.15	11.570			
1,300.0	1,245.3	1,311.2	1,269.8	6.1	5.3	160.21	229.7	-81.3	65.3	59.5	5.79	11.265			
1,400.0	1,334.4	1,411.5	1,361.3	6.9	6.0	160.01	267.6	-96.4	70.9	64.5	6.45	10.990			
1,500.0	1,422.2	1,515.0	1,454.5	7.8	6.9	159.48	309.6	-113.0	76.0	68.8	7.20	10.560			
1,600.0	1,507.5	1,618.8	1,545.2	8.8	7.8	158.80	356.4	-131.6	81.1	73.0	8.06	10.065			
1,702.6	1,592.0	1,725.5	1,635.5	9.9	8.8	157.95	409.2	-152.6	86.2	77.1	9.06	9.509			
1,800.0	1,670.7	1,827.1	1,718.4	10.9	9.9	156.44	463.7	-174.2	88.6	78.3	10.33	8.582			
1,900.0	1,751.5	1,931.2	1,800.0	12.0	11.1	153.26	523.8	-198.0	86.5	74.2	12.23	7.068			
2,000.0	1,832.4	2,034.5	1,877.5	13.0	12.4	147.80	587.4	-223.3	80.0	64.9	15.11	5.294			
2,100.0	1,913.2	2,136.5	1,950.1	14.1	13.7	138.59	653.9	-249.7	70.4	50.8	19.55	3.601			
2,200.0	1,994.0	2,235.4	2,017.8	15.2	15.0	124.36	720.9	-276.3	60.9	35.3	25.58	2.380			
2,300.0	2,074.8	2,333.5	2,085.0	16.2	16.3	106.53	787.4	-302.7	56.3	24.8	31.43	1.791			
2,325.0	2,095.0	2,358.0	2,101.7	16.5	16.6	101.78	804.0	-309.3	56.1	23.5	32.57	1.721			
2,400.0	2,155.6	2,431.7	2,152.1	17.3	17.6	87.76	854.0	-329.1	57.9	23.0	34.81	1.662	SF		
2,500.0	2,236.5	2,529.9	2,219.3	18.4	18.9	71.56	920.6	-355.5	65.2	30.0	35.18	1.853			
2,600.0	2,317.3	2,628.1	2,286.4	19.4	20.2	59.31	987.2	-381.9	76.7	42.7	33.95	2.258			
2,700.0	2,398.1	2,726.2	2,353.6	20.5	21.5	50.48	1,053.7	-408.4	90.7	58.3	32.38	2.801			

Cathedral Energy Services

Anticollision Report

Company:	EnCana Oil & Gas (USA) Inc	Local Co-ordinate Reference:	Well Daybreak Federal 19-6C (PJ-19)
Project:	S. Piceance	TVD Reference:	KBE @ 5449.0ft (Original Well Elev)
Reference Site:	NWSE S19-T7S-R95W (PJ-19 Pad)	MD Reference:	KBE @ 5449.0ft (Original Well Elev)
Site Error:	0.0ft	North Reference:	True
Reference Well:	Daybreak Federal 19-6C (PJ-19)	Survey Calculation Method:	Minimum Curvature
Well Error:	0.0ft	Output errors are at	2.00 sigma
Reference Wellbore	DD	Database:	EDM 5000.1 US Multi Users DB
Reference Design:	Plan #1	Offset TVD Reference:	Offset Datum

Offset Design NWSE S19-T7S-R95W (PJ-19 Pad) - Daybreak Federal 19-6 (PJ-19) - DD - Plan #1													Offset Site Error:	0.0 ft
Survey Program: 0-MWD													Offset Well Error:	0.0 ft
Reference		Offset		Semi Major Axis			Distance					Separation Factor	Warning	
Measured Depth (ft)	Vertical Depth (ft)	Measured Depth (ft)	Vertical Depth (ft)	Reference (ft)	Offset (ft)	Highside Toolface (°)	Offset Wellbore Centre +N/-S (ft)	+E/-W (ft)	Between Centres (ft)	Between Ellipses (ft)	Total Uncertainty Axis			
0.0	0.0	0.0	0.0	0.0	0.0	-152.66	-10.9	-5.7	12.3					
100.0	100.0	100.0	100.0	0.1	0.1	-152.66	-10.9	-5.7	12.3	12.0	0.27	45.180		
200.0	200.0	200.0	200.0	0.3	0.3	-152.66	-10.9	-5.7	12.3	11.7	0.62	19.798 CC, ES		
300.0	300.0	300.0	300.0	0.5	0.5	-136.37	-10.9	-5.7	14.1	13.1	0.97	14.439		
400.0	399.6	400.4	400.4	0.7	0.7	-147.20	-8.6	-7.0	18.3	17.0	1.34	13.718		
500.0	498.8	501.2	500.8	1.0	0.9	-152.78	-1.7	-10.9	23.2	21.5	1.71	13.537		
600.0	597.1	602.2	601.0	1.4	1.2	-155.54	9.8	-17.4	28.4	26.2	2.11	13.421		
700.0	694.3	703.5	700.5	1.8	1.5	-156.70	26.0	-26.6	33.7	31.2	2.55	13.229		
800.0	790.2	805.1	799.2	2.3	2.0	-156.89	46.8	-38.4	39.2	36.1	3.03	12.907		
900.0	884.4	906.9	896.8	3.0	2.5	-156.47	72.2	-52.8	44.7	41.1	3.60	12.441		
1,000.0	976.8	1,009.0	992.8	3.7	3.1	-155.64	102.2	-69.9	50.4	46.2	4.26	11.843		
1,100.0	1,067.1	1,111.0	1,086.9	4.5	3.9	-154.53	136.6	-89.3	56.2	51.2	5.04	11.164		
1,200.0	1,156.2	1,210.8	1,178.0	5.3	4.6	-153.78	171.9	-109.4	62.6	56.7	5.86	10.678		
1,300.0	1,245.3	1,310.6	1,269.2	6.1	5.3	-153.17	207.2	-129.4	68.9	62.2	6.71	10.275		
1,400.0	1,334.4	1,410.8	1,360.7	6.9	6.0	-152.65	242.6	-149.5	75.2	67.6	7.58	9.927		
1,500.0	1,422.2	1,514.2	1,453.7	7.8	6.9	-151.75	281.9	-171.8	81.1	72.5	8.60	9.438		
1,600.0	1,507.5	1,617.8	1,544.4	8.8	7.8	-150.66	325.6	-196.6	87.1	77.3	9.77	8.917		
1,702.6	1,592.0	1,720.5	1,632.5	9.9	8.8	-150.17	371.4	-222.6	95.1	84.2	10.92	8.713 SF		

Cathedral Energy Services

Anticollision Report

Company:	EnCana Oil & Gas (USA) Inc	Local Co-ordinate Reference:	Well Daybreak Federal 19-6C (PJ-19)
Project:	S. Piceance	TVD Reference:	KBE @ 5449.0ft (Original Well Elev)
Reference Site:	NWSE S19-T7S-R95W (PJ-19 Pad)	MD Reference:	KBE @ 5449.0ft (Original Well Elev)
Site Error:	0.0ft	North Reference:	True
Reference Well:	Daybreak Federal 19-6C (PJ-19)	Survey Calculation Method:	Minimum Curvature
Well Error:	0.0ft	Output errors are at	2.00 sigma
Reference Wellbore	DD	Database:	EDM 5000.1 US Multi Users DB
Reference Design:	Plan #1	Offset TVD Reference:	Offset Datum

Offset Design NWSE S19-T7S-R95W (PJ-19 Pad) - Daybreak Federal 19-6BB (PJ 19) - DD - Plan #1												Offset Site Error:	0.0 ft
Survey Program: 0-MWD												Offset Well Error:	0.0 ft
Reference		Offset		Semi Major Axis		Distance							
Measured Depth (ft)	Vertical Depth (ft)	Measured Depth (ft)	Vertical Depth (ft)	Reference (ft)	Offset (ft)	Highside Toolface (°)	Offset Wellbore Centre +N/-S (ft)	+E/-W (ft)	Between Centres (ft)	Between Ellipses (ft)	Total Uncertainty Axis	Separation Factor	Warning
0.0	0.0	0.0	0.0	0.0	0.0	-126.39	-14.6	-19.8	24.6				
100.0	100.0	100.0	100.0	0.1	0.1	-126.39	-14.6	-19.8	24.6	24.3	0.27	90.223	
200.0	200.0	200.0	200.0	0.3	0.3	-126.39	-14.6	-19.8	24.6	23.9	0.62	39.536 CC, ES	
300.0	300.0	299.8	299.7	0.5	0.5	-101.65	-12.8	-21.7	25.5	24.6	0.99	25.891	
400.0	399.6	399.5	399.1	0.7	0.7	-101.51	-7.4	-27.3	28.5	27.0	1.42	19.989	
500.0	498.8	499.1	497.9	1.0	1.0	-101.31	1.6	-36.6	33.3	31.3	1.98	16.804	
600.0	597.1	598.5	595.6	1.4	1.4	-101.09	14.1	-49.7	40.1	37.4	2.69	14.887	
700.0	694.3	697.8	692.1	1.8	1.8	-100.85	30.1	-66.3	48.8	45.2	3.57	13.660	
800.0	790.2	796.7	787.1	2.3	2.3	-100.61	49.5	-86.5	59.3	54.7	4.62	12.841	
900.0	884.4	895.6	880.5	3.0	2.9	-100.70	71.9	-109.9	71.6	65.8	5.81	12.331	
1,000.0	976.8	994.6	973.7	3.7	3.5	-103.52	94.9	-133.9	85.2	78.1	7.08	12.029 SF	

Cathedral Energy Services

Anticollision Report

Company:	EnCana Oil & Gas (USA) Inc	Local Co-ordinate Reference:	Well Daybreak Federal 19-6C (PJ-19)
Project:	S. Piceance	TVD Reference:	KBE @ 5449.0ft (Original Well Elev)
Reference Site:	NWSE S19-T7S-R95W (PJ-19 Pad)	MD Reference:	KBE @ 5449.0ft (Original Well Elev)
Site Error:	0.0ft	North Reference:	True
Reference Well:	Daybreak Federal 19-6C (PJ-19)	Survey Calculation Method:	Minimum Curvature
Well Error:	0.0ft	Output errors are at	2.00 sigma
Reference Wellbore	DD	Database:	EDM 5000.1 US Multi Users DB
Reference Design:	Plan #1	Offset TVD Reference:	Offset Datum

Offset Design NWSE S19-T7S-R95W (PJ-19 Pad) - Daybreak Federal 19-6D (PJ-19) - DD - Plan #1													Offset Site Error:	0.0 ft
Survey Program: 0-MWD													Offset Well Error:	0.0 ft
Reference		Offset		Semi Major Axis			Distance					Separation Factor	Warning	
Measured Depth (ft)	Vertical Depth (ft)	Measured Depth (ft)	Vertical Depth (ft)	Reference (ft)	Offset (ft)	Highside Toolface (°)	Offset Wellbore Centre +N/-S (ft)	+E/-W (ft)	Between Centres (ft)	Between Ellipses (ft)	Total Uncertainty Axis			
0.0	0.0	0.0	0.0	0.0	0.0	-117.28	-7.3	-14.1	15.9					
100.0	100.0	100.0	100.0	0.1	0.1	-117.28	-7.3	-14.1	15.9	15.6	0.27	58.371		
200.0	200.0	200.0	200.0	0.3	0.3	-117.28	-7.3	-14.1	15.9	15.3	0.62	25.578 CC, ES		
300.0	300.0	299.9	299.8	0.5	0.5	-92.65	-5.1	-15.6	16.3	15.4	0.99	16.556		
400.0	399.6	399.8	399.4	0.7	0.7	-92.81	1.3	-20.0	17.7	16.3	1.43	12.395		
500.0	498.8	499.6	498.4	1.0	1.0	-93.03	12.0	-27.4	19.9	17.9	1.99	10.007		
600.0	597.1	599.5	596.5	1.4	1.4	-93.25	27.0	-37.7	23.1	20.4	2.71	8.503		
700.0	694.3	699.2	693.6	1.8	1.8	-93.44	46.1	-50.9	27.1	23.5	3.60	7.515		
800.0	790.2	799.0	789.2	2.3	2.3	-93.59	69.4	-67.0	32.0	27.3	4.67	6.843		
900.0	884.4	898.6	883.1	3.0	3.0	-93.69	96.8	-85.8	37.7	31.8	5.92	6.373		
1,000.0	976.8	998.3	975.3	3.7	3.7	-94.05	127.9	-107.3	44.3	37.0	7.31	6.053		
1,100.0	1,067.1	1,097.9	1,067.0	4.5	4.4	-98.68	160.0	-129.4	51.5	42.7	8.78	5.861 SF		
1,200.0	1,156.2	1,197.4	1,158.6	5.3	5.1	-104.76	192.1	-151.5	59.6	49.4	10.16	5.863		
1,300.0	1,245.3	1,296.9	1,250.1	6.1	5.8	-109.36	224.1	-173.6	68.2	56.7	11.47	5.947		
1,400.0	1,334.4	1,396.4	1,341.7	6.9	6.5	-112.91	256.2	-195.7	77.2	64.4	12.73	6.063		
1,500.0	1,422.2	1,495.6	1,433.0	7.8	7.2	-116.97	288.2	-217.7	87.5	73.6	13.90	6.297		

Cathedral Energy Services

Anticollision Report

Company:	EnCana Oil & Gas (USA) Inc	Local Co-ordinate Reference:	Well Daybreak Federal 19-6C (PJ-19)
Project:	S. Piceance	TVD Reference:	KBE @ 5449.0ft (Original Well Elev)
Reference Site:	NWSE S19-T7S-R95W (PJ-19 Pad)	MD Reference:	KBE @ 5449.0ft (Original Well Elev)
Site Error:	0.0ft	North Reference:	True
Reference Well:	Daybreak Federal 19-6C (PJ-19)	Survey Calculation Method:	Minimum Curvature
Well Error:	0.0ft	Output errors are at	2.00 sigma
Reference Wellbore	DD	Database:	EDM 5000.1 US Multi Users DB
Reference Design:	Plan #1	Offset TVD Reference:	Offset Datum

Offset Design NWSE S19-T7S-R95W (PJ-19 Pad) - Daybreak Federal 19-7 (PJ-19) - DD - Plan #1													Offset Site Error:	0.0 ft
Survey Program: 0-MWD													Offset Well Error:	0.0 ft
Reference		Offset		Semi Major Axis			Distance							Warning
Measured Depth (ft)	Vertical Depth (ft)	Measured Depth (ft)	Vertical Depth (ft)	Reference (ft)	Offset (ft)	Highside Toolface (°)	Offset Wellbore Centre +N/-S (ft)	+E/-W (ft)	Between Centres (ft)	Between Ellipses (ft)	Total Uncertainty Axis	Separation Factor		
0.0	0.0	0.0	0.0	0.0	0.0	73.12	14.6	48.0	50.2					
100.0	100.0	100.0	100.0	0.1	0.1	73.12	14.6	48.0	50.2	49.9	0.27	184.325		
200.0	200.0	200.0	200.0	0.3	0.3	73.12	14.6	48.0	50.2	49.6	0.62	80.772 CC, ES		
300.0	300.0	298.5	298.4	0.5	0.5	98.29	17.0	48.8	52.0	51.1	0.98	53.003		
400.0	399.6	396.7	396.4	0.7	0.7	99.53	24.2	51.2	57.6	56.2	1.40	41.022		
500.0	498.8	494.6	493.4	1.0	1.0	101.09	36.1	55.2	66.9	65.0	1.93	34.621		
600.0	597.1	591.8	589.0	1.4	1.3	102.61	52.6	60.7	79.9	77.3	2.59	30.811		
700.0	694.3	688.2	682.9	1.8	1.8	103.88	73.4	67.7	96.6	93.2	3.40	28.411 SF		

Cathedral Energy Services

Anticollision Report

Company:	EnCana Oil & Gas (USA) Inc	Local Co-ordinate Reference:	Well Daybreak Federal 19-6C (PJ-19)
Project:	S. Piceance	TVD Reference:	KBE @ 5449.0ft (Original Well Elev)
Reference Site:	NWSE S19-T7S-R95W (PJ-19 Pad)	MD Reference:	KBE @ 5449.0ft (Original Well Elev)
Site Error:	0.0ft	North Reference:	True
Reference Well:	Daybreak Federal 19-6C (PJ-19)	Survey Calculation Method:	Minimum Curvature
Well Error:	0.0ft	Output errors are at	2.00 sigma
Reference Wellbore	DD	Database:	EDM 5000.1 US Multi Users DB
Reference Design:	Plan #1	Offset TVD Reference:	Offset Datum

Offset Design NWSE S19-T7S-R95W (PJ-19 Pad) - Daybreak Federal 19-7BB (PJ-19) - DD - Plan #1													Offset Site Error:	0.0 ft
Survey Program: 0-MWD													Offset Well Error:	0.0 ft
Reference		Offset		Semi Major Axis			Distance						Warning	
Measured Depth (ft)	Vertical Depth (ft)	Measured Depth (ft)	Vertical Depth (ft)	Reference (ft)	Offset (ft)	Highside Toolface (°)	Offset Wellbore Centre +N/-S (ft)	+E/-W (ft)	Between Centres (ft)	Between Ellipses (ft)	Total Uncertainty Axis	Separation Factor		
0.0	0.0	0.0	0.0	0.0	0.0	72.13	10.9	33.9	35.6					
100.0	100.0	100.0	100.0	0.1	0.1	72.13	10.9	33.9	35.6	35.3	0.27	130.816		
200.0	200.0	200.0	200.0	0.3	0.3	72.13	10.9	33.9	35.6	35.0	0.62	57.324 CC, ES		
300.0	300.0	300.0	300.0	0.5	0.5	100.95	10.9	33.9	36.0	35.0	0.98	36.813		
400.0	399.6	399.6	399.6	0.7	0.7	112.45	10.9	33.9	38.3	36.9	1.37	28.052		
500.0	498.8	498.8	498.8	1.0	0.8	127.77	10.9	33.9	45.0	43.2	1.77	25.420 SF		
600.0	597.1	597.8	597.8	1.4	1.0	139.49	13.4	34.4	57.4	55.2	2.17	26.468		
700.0	694.3	697.2	696.9	1.8	1.2	145.26	20.9	36.0	73.9	71.3	2.60	28.424		
800.0	790.2	796.8	795.6	2.3	1.5	147.52	33.5	38.6	93.3	90.2	3.10	30.051		

Cathedral Energy Services

Anticollision Report

Company:	EnCana Oil & Gas (USA) Inc	Local Co-ordinate Reference:	Well Daybreak Federal 19-6C (PJ-19)
Project:	S. Piceance	TVD Reference:	KBE @ 5449.0ft (Original Well Elev)
Reference Site:	NWSE S19-T7S-R95W (PJ-19 Pad)	MD Reference:	KBE @ 5449.0ft (Original Well Elev)
Site Error:	0.0ft	North Reference:	True
Reference Well:	Daybreak Federal 19-6C (PJ-19)	Survey Calculation Method:	Minimum Curvature
Well Error:	0.0ft	Output errors are at	2.00 sigma
Reference Wellbore	DD	Database:	EDM 5000.1 US Multi Users DB
Reference Design:	Plan #1	Offset TVD Reference:	Offset Datum

Offset Design NWSE S19-T7S-R95W (PJ-19 Pad) - Daybreak Federal 19-7C (PJ-19) - DD - Plan #1													Offset Site Error: 0.0 ft
Survey Program: 0-MWD													Offset Well Error: 0.0 ft
Reference		Offset		Semi Major Axis			Distance						Warning
Measured Depth (ft)	Vertical Depth (ft)	Measured Depth (ft)	Vertical Depth (ft)	Reference (ft)	Offset (ft)	Highside Toolface (°)	Offset Wellbore Centre +N/-S (ft)	+E/-W (ft)	Between Centres (ft)	Between Ellipses (ft)	Total Uncertainty Axis	Separation Factor	
0.0	0.0	0.0	0.0	0.0	0.0	80.25	7.3	42.4	43.0				
100.0	100.0	100.0	100.0	0.1	0.1	80.25	7.3	42.4	43.0	42.7	0.27	157.918	
200.0	200.0	200.0	200.0	0.3	0.3	80.25	7.3	42.4	43.0	42.4	0.62	69.200 CC, ES	
300.0	300.0	300.0	300.0	0.5	0.5	108.23	7.3	42.4	43.7	42.8	0.98	44.731	
400.0	399.6	399.6	399.6	0.7	0.7	117.28	7.3	42.4	46.8	45.4	1.36	34.371	
500.0	498.8	498.8	498.8	1.0	0.8	129.44	7.3	42.4	54.1	52.3	1.76	30.656 SF	
600.0	597.1	597.1	597.1	1.4	1.0	141.20	7.3	42.4	67.2	65.0	2.15	31.241	
700.0	694.3	694.3	694.3	1.8	1.2	150.54	7.3	42.4	86.8	84.2	2.51	34.600	

Cathedral Energy Services

Anticollision Report

Company:	EnCana Oil & Gas (USA) Inc	Local Co-ordinate Reference:	Well Daybreak Federal 19-6C (PJ-19)
Project:	S. Piceance	TVD Reference:	KBE @ 5449.0ft (Original Well Elev)
Reference Site:	NWSE S19-T7S-R95W (PJ-19 Pad)	MD Reference:	KBE @ 5449.0ft (Original Well Elev)
Site Error:	0.0ft	North Reference:	True
Reference Well:	Daybreak Federal 19-6C (PJ-19)	Survey Calculation Method:	Minimum Curvature
Well Error:	0.0ft	Output errors are at	2.00 sigma
Reference Wellbore	DD	Database:	EDM 5000.1 US Multi Users DB
Reference Design:	Plan #1	Offset TVD Reference:	Offset Datum

Offset Design NWSE S19-T7S-R95W (PJ-19 Pad) - Daybreak Federal 19-8 (PJ-19) - DD - Plan #1												Offset Site Error: 0.0 ft	
Survey Program: 0-MWD												Offset Well Error: 0.0 ft	
Reference		Offset		Semi Major Axis			Distance						Warning
Measured Depth	Vertical Depth	Measured Depth	Vertical Depth	Reference	Offset	Highside Toolface	Offset Wellbore Centre		Between Centres	Between Ellipses	Total Uncertainty Axis	Separation Factor	
(ft)	(ft)	(ft)	(ft)	(ft)	(ft)	(°)	+N/-S (ft)	+E/-W (ft)	(ft)	(ft)			
0.0	0.0	0.0	0.0	0.0	0.0	70.42	29.1	81.9	87.0				
100.0	100.0	100.0	100.0	0.1	0.1	70.42	29.1	81.9	87.0	86.7	0.27	319.360	
200.0	200.0	200.0	200.0	0.3	0.3	70.42	29.1	81.9	87.0	86.3	0.62	139.945 CC, ES	
300.0	300.0	295.9	295.9	0.5	0.5	96.00	30.8	83.7	89.5	88.5	0.97	91.939	
400.0	399.6	391.4	391.1	0.7	0.7	98.36	35.8	88.8	97.2	95.8	1.37	70.988 SF	

Cathedral Energy Services

Anticollision Report

Company:	EnCana Oil & Gas (USA) Inc	Local Co-ordinate Reference:	Well Daybreak Federal 19-6C (PJ-19)
Project:	S. Piceance	TVD Reference:	KBE @ 5449.0ft (Original Well Elev)
Reference Site:	NWSE S19-T7S-R95W (PJ-19 Pad)	MD Reference:	KBE @ 5449.0ft (Original Well Elev)
Site Error:	0.0ft	North Reference:	True
Reference Well:	Daybreak Federal 19-6C (PJ-19)	Survey Calculation Method:	Minimum Curvature
Well Error:	0.0ft	Output errors are at	2.00 sigma
Reference Wellbore	DD	Database:	EDM 5000.1 US Multi Users DB
Reference Design:	Plan #1	Offset TVD Reference:	Offset Datum

Offset Design NWSE S19-T7S-R95W (PJ-19 Pad) - Daybreak Federal 19-8BB (PJ-19) - DD - Plan #1												Offset Site Error:	0.0 ft
Survey Program: 0-MWD												Offset Well Error:	0.0 ft
Reference		Offset		Semi Major Axis			Distance						Warning
Measured Depth	Vertical Depth	Measured Depth	Vertical Depth	Reference	Offset	Highside Toolface	Offset Wellbore Centre	Between Centres	Between Ellipses	Total Uncertainty	Separation Factor		
(ft)	(ft)	(ft)	(ft)	(ft)	(ft)	(°)	+N/-S (ft)	+E/-W (ft)	(ft)	(ft)	Axis		
0.0	0.0	0.0	0.0	0.0	0.0	76.41	21.9	90.4	93.0				
100.0	100.0	100.0	100.0	0.1	0.1	76.41	21.9	90.4	93.0	92.7	0.27	341.586	
200.0	200.0	200.0	200.0	0.3	0.3	76.41	21.9	90.4	93.0	92.4	0.62	149.684 CC, ES	
300.0	300.0	295.4	295.3	0.5	0.5	102.12	23.0	92.5	95.9	95.0	0.97	98.797 SF	

Cathedral Energy Services

Anticollision Report

Company:	EnCana Oil & Gas (USA) Inc	Local Co-ordinate Reference:	Well Daybreak Federal 19-6C (PJ-19)
Project:	S. Piceance	TVD Reference:	KBE @ 5449.0ft (Original Well Elev)
Reference Site:	NWSE S19-T7S-R95W (PJ-19 Pad)	MD Reference:	KBE @ 5449.0ft (Original Well Elev)
Site Error:	0.0ft	North Reference:	True
Reference Well:	Daybreak Federal 19-6C (PJ-19)	Survey Calculation Method:	Minimum Curvature
Well Error:	0.0ft	Output errors are at	2.00 sigma
Reference Wellbore	DD	Database:	EDM 5000.1 US Multi Users DB
Reference Design:	Plan #1	Offset TVD Reference:	Offset Datum

Offset Design NWSE S19-T7S-R95W (PJ-19 Pad) - Daybreak Federal 19-8C (PJ-19 Pad) - DD - Plan #1													Offset Site Error:	0.0 ft
Survey Program: 0-MWD													Offset Well Error:	0.0 ft
Reference		Offset		Semi Major Axis			Distance						Warning	
Measured Depth (ft)	Vertical Depth (ft)	Measured Depth (ft)	Vertical Depth (ft)	Reference (ft)	Offset (ft)	Highside Toolface (°)	Offset Wellbore Centre +N/-S (ft)	+E/-W (ft)	Between Centres (ft)	Between Ellipses (ft)	Total Uncertainty Axis	Separation Factor		
0.0	0.0	0.0	0.0	0.0	0.0	79.56	10.9	59.3	60.3					
100.0	100.0	100.0	100.0	0.1	0.1	79.56	10.9	59.3	60.3	60.1	0.27	221.555		
200.0	200.0	200.0	200.0	0.3	0.3	79.56	10.9	59.3	60.3	59.7	0.62	97.086 CC, ES		
300.0	300.0	297.5	297.5	0.5	0.5	104.99	12.8	60.9	62.9	62.0	0.98	64.388		
400.0	399.6	394.7	394.3	0.7	0.7	106.84	18.5	65.7	70.8	69.5	1.38	51.191		
500.0	498.8	490.9	489.8	1.0	1.0	109.09	27.9	73.5	84.1	82.2	1.88	44.812 SF		

Cathedral Energy Services

Anticollision Report

Company:	EnCana Oil & Gas (USA) Inc	Local Co-ordinate Reference:	Well Daybreak Federal 19-6C (PJ-19)
Project:	S. Piceance	TVD Reference:	KBE @ 5449.0ft (Original Well Elev)
Reference Site:	NWSE S19-T7S-R95W (PJ-19 Pad)	MD Reference:	KBE @ 5449.0ft (Original Well Elev)
Site Error:	0.0ft	North Reference:	True
Reference Well:	Daybreak Federal 19-6C (PJ-19)	Survey Calculation Method:	Minimum Curvature
Well Error:	0.0ft	Output errors are at	2.00 sigma
Reference Wellbore	DD	Database:	EDM 5000.1 US Multi Users DB
Reference Design:	Plan #1	Offset TVD Reference:	Offset Datum

Offset Design NWSE S19-T7S-R95W (PJ-19 Pad) - Daybreak Federal 19-8D (PJ-19) - DD - Plan #1													Offset Site Error: 0.0 ft	
Survey Program: 0-MWD													Offset Well Error: 0.0 ft	
Reference		Offset		Semi Major Axis			Distance							
Measured Depth	Vertical Depth	Measured Depth	Vertical Depth	Reference	Offset	Highside Toolface	Offset Wellbore Centre		Between Centres	Between Ellipses	Total Uncertainty Axis	Separation Factor	Warning	
(ft)	(ft)	(ft)	(ft)	(ft)	(ft)	(°)	+N/-S (ft)	+E/-W (ft)	(ft)	(ft)				
0.0	0.0	0.0	0.0	0.0	0.0	76.57	18.2	76.3	78.4					
100.0	100.0	100.0	100.0	0.1	0.1	76.57	18.2	76.3	78.4	78.1	0.27	288.018		
200.0	200.0	200.0	200.0	0.3	0.3	76.57	18.2	76.3	78.4	77.8	0.62	126.210 CC, ES		
300.0	300.0	296.3	296.2	0.5	0.5	102.24	19.7	78.2	81.3	80.3	0.97	83.474		
400.0	399.6	391.9	391.6	0.7	0.7	104.79	24.0	84.0	89.9	88.5	1.37	65.760 SF		

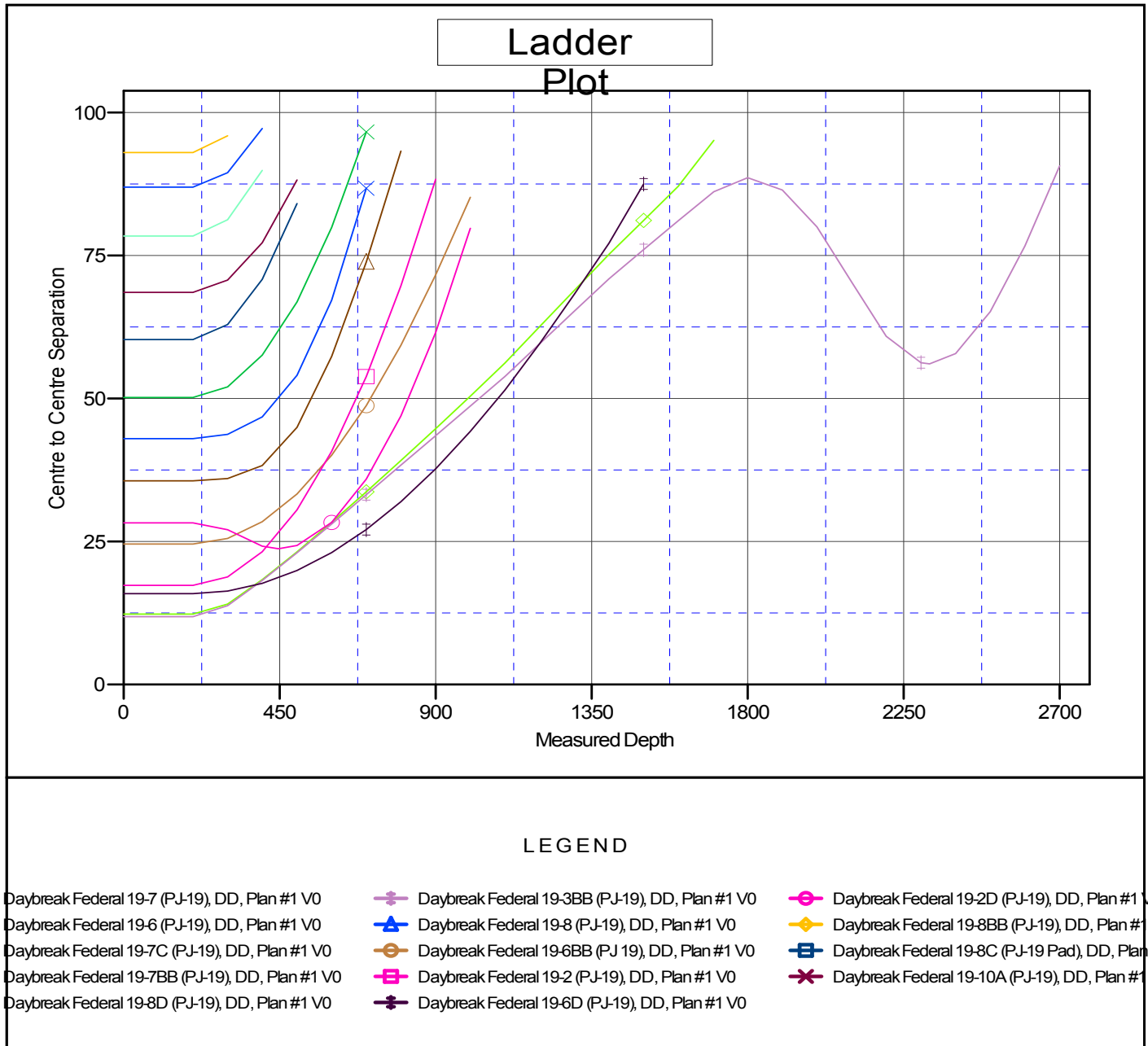
Cathedral Energy Services

Anticollision Report

Company:	EnCana Oil & Gas (USA) Inc	Local Co-ordinate Reference:	Well Daybreak Federal 19-6C (PJ-19)
Project:	S. Piceance	TVD Reference:	KBE @ 5449.0ft (Original Well Elev)
Reference Site:	NWSE S19-T7S-R95W (PJ-19 Pad)	MD Reference:	KBE @ 5449.0ft (Original Well Elev)
Site Error:	0.0ft	North Reference:	True
Reference Well:	Daybreak Federal 19-6C (PJ-19)	Survey Calculation Method:	Minimum Curvature
Well Error:	0.0ft	Output errors are at	2.00 sigma
Reference Wellbore	DD	Database:	EDM 5000.1 US Multi Users DB
Reference Design:	Plan #1	Offset TVD Reference:	Offset Datum

Reference Depths are relative to KBE @ 5449.0ft (Original Well Elev)
 Offset Depths are relative to Offset Datum
 Central Meridian is -105.500000 °

Coordinates are relative to: Daybreak Federal 19-6C (PJ-19)
 Coordinate System is US State Plane 1983, Colorado Central Zone
 Grid Convergence at Surface is: -1.60°



CC - Min centre to center distance or convergent point, SF - min separation factor, ES - min ellipse separation