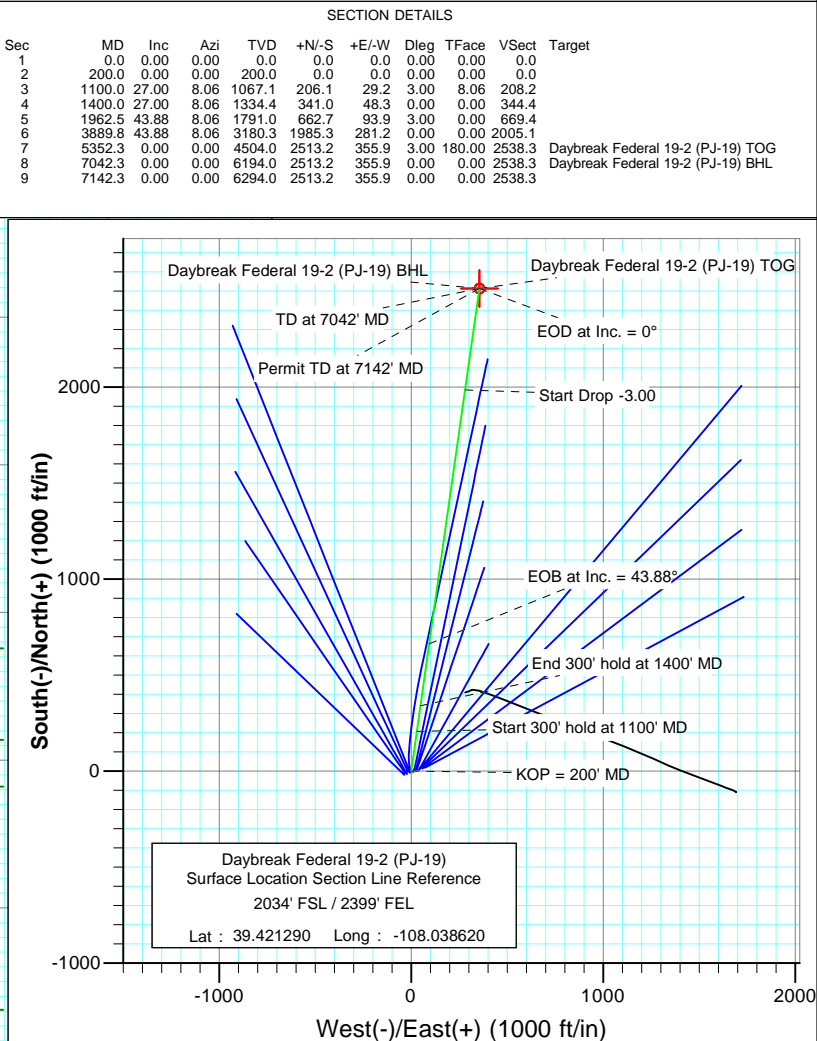
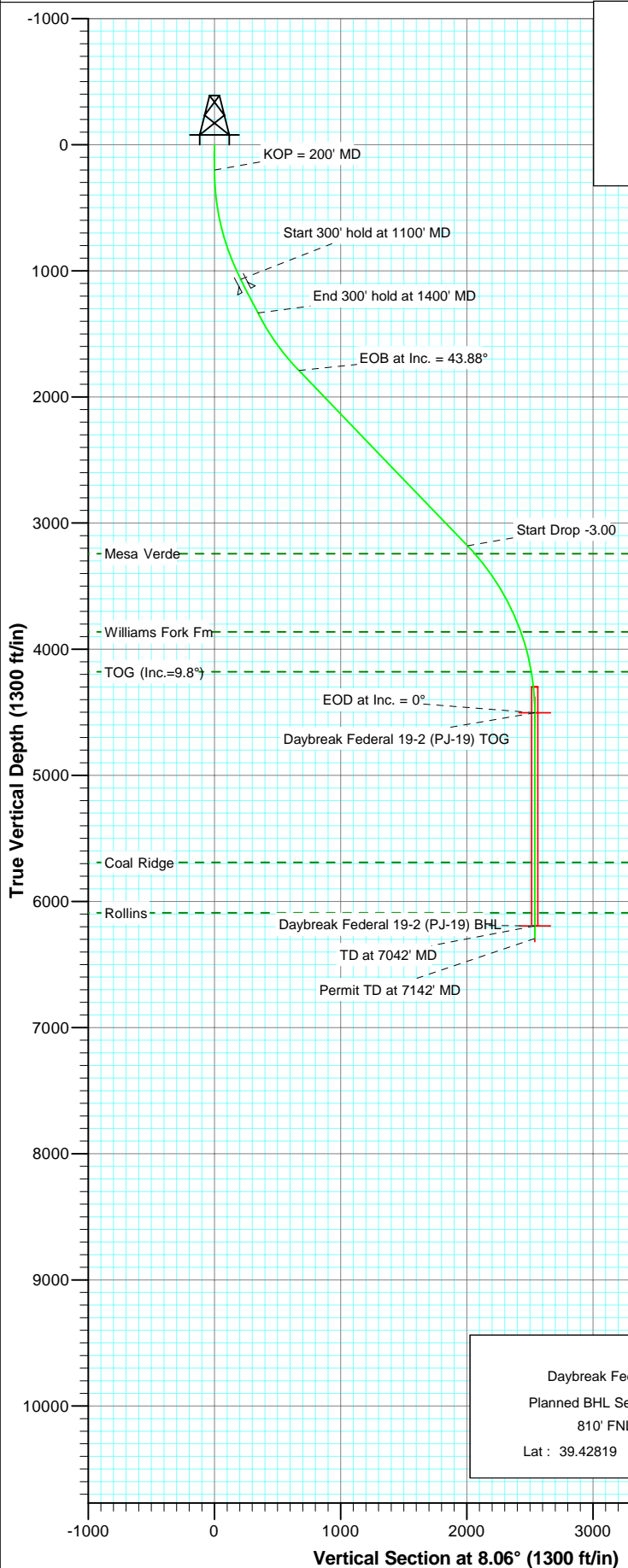


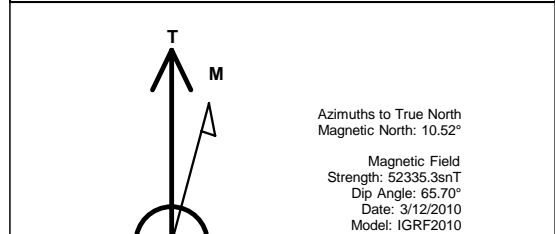


Project: S. Piceance
Site: NWSE S19-T7S-R95W (PJ-19 Pad)
Well: Daybreak Federal 19-2 (PJ-19)
Wellbore: DD
Plan: Plan #1

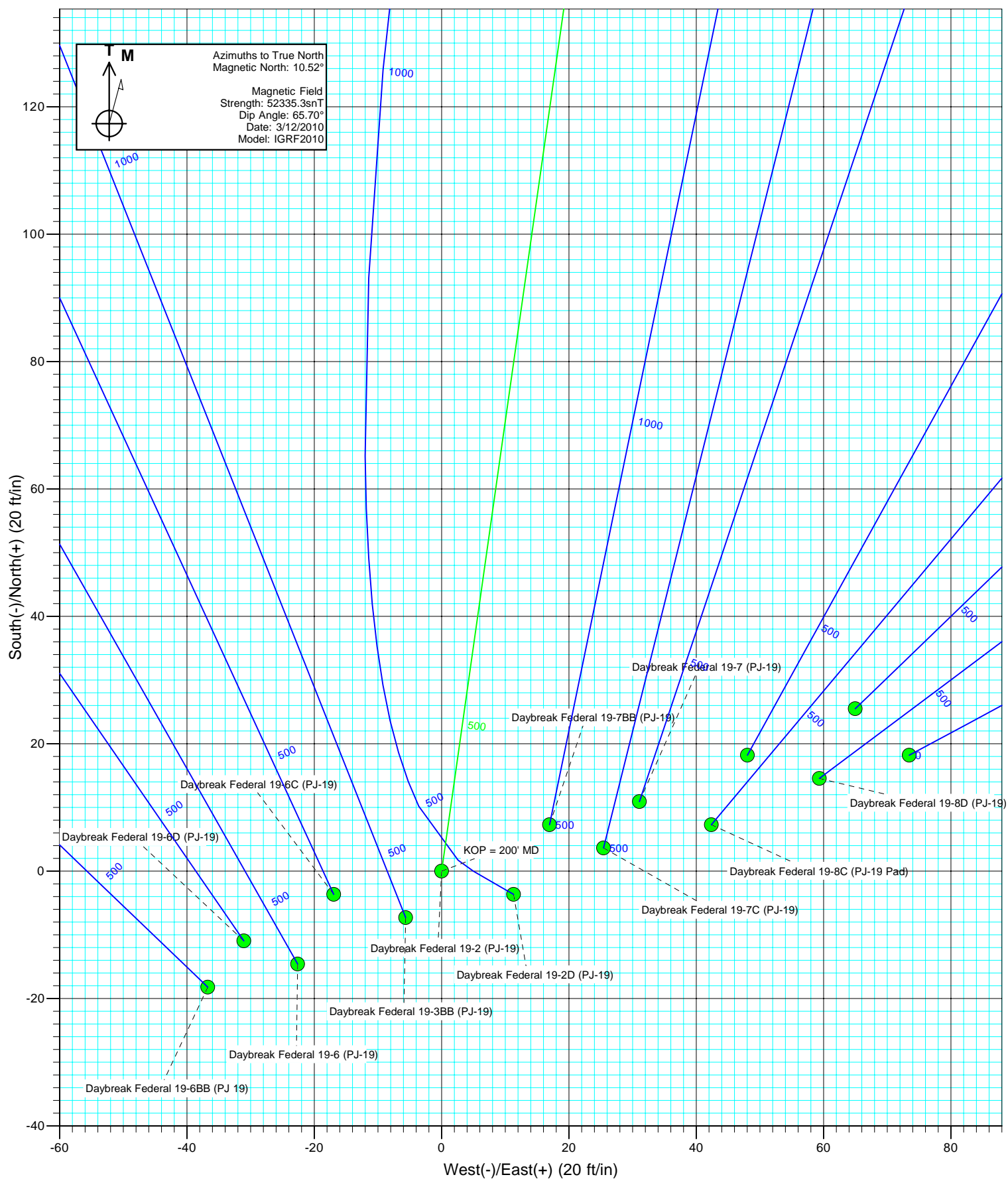


SECTION DETAILS										
Sec	MD	Inc	Azi	TVD	+N/-S	+E/-W	Dleg	TFace	VSect	Target
1	0.0	0.00	0.00	0.0	0.0	0.0	0.00	0.00	0.0	
2	200.0	0.00	0.00	200.0	0.0	0.0	0.00	0.00	0.0	
3	1100.0	27.00	8.06	1067.1	206.1	29.2	3.00	8.06	208.2	
4	1400.0	27.00	8.06	1334.4	341.0	48.3	0.00	0.00	344.4	
5	1962.5	43.88	8.06	1791.0	662.7	93.9	3.00	0.00	669.4	
6	3889.8	43.88	8.06	3180.3	1985.3	281.2	0.00	0.00	2005.1	
7	5352.3	0.00	0.00	4504.0	2513.2	355.9	3.00	180.00	2538.3	Daybreak Federal 19-2 (PJ-19) TOG
8	7042.3	0.00	0.00	6194.0	2513.2	355.9	0.00	0.00	2538.3	Daybreak Federal 19-2 (PJ-19) BHL
9	7142.3	0.00	0.00	6294.0	2513.2	355.9	0.00	0.00	2538.3	

FORMATION TOP DETAILS		
TVDPath	MDPath	Formation
3242.0	3973.7	Mesa Verde
3863.0	4698.6	Williams Fork Fm
4179.0	5025.7	TOG (Inc.=9.8°)
5691.0	6539.3	Coal Ridge
6090.0	6938.3	Rollins

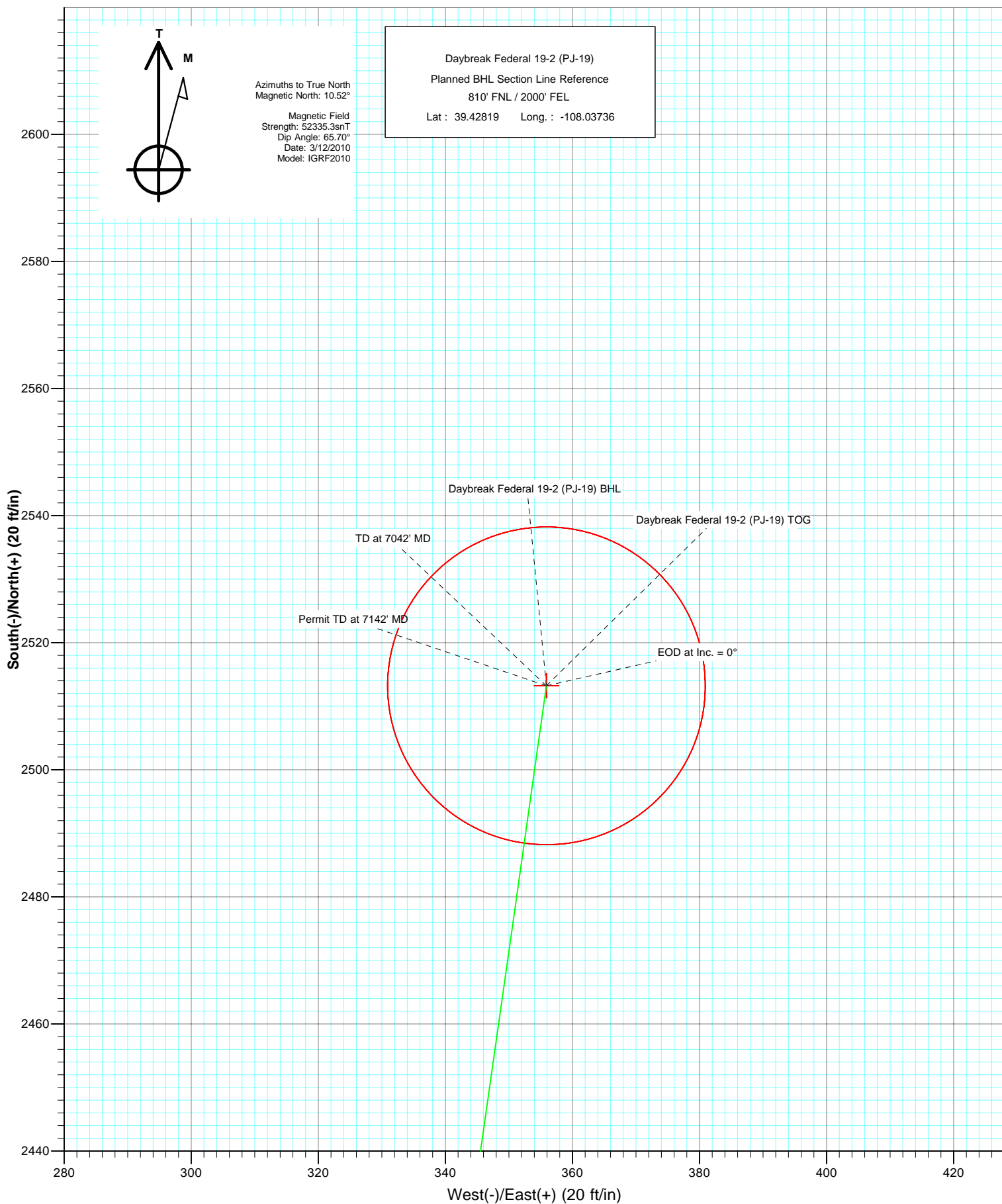


DESIGN DETAILS: Plan #1				
Job# 105XXX				
KBE @ 5449.0ft (Original Well Elev)				
Target	Azimuth	Origin Type	N/S	E/W
Daybreak Federal 19-2 (PJ-19) BHL	8.06	Slot	0.0	0.0





Project: S. Piceance
Site: NWSE S19-T7S-R95W (PJ-19 Pad)
Well: Daybreak Federal 19-2 (PJ-19)
Wellbore: DD
Plan: Plan #1



Cathedral Energy Services

Planning Report

Database:	EDM 5000.1 US Multi Users DB	Local Co-ordinate Reference:	Well Daybreak Federal 19-2 (PJ-19)
Company:	EnCana Oil & Gas (USA) Inc	TVD Reference:	KBE @ 5449.0ft (Original Well Elev)
Project:	S. Piceance	MD Reference:	KBE @ 5449.0ft (Original Well Elev)
Site:	NWSE S19-T7S-R95W (PJ-19 Pad)	North Reference:	True
Well:	Daybreak Federal 19-2 (PJ-19)	Survey Calculation Method:	Minimum Curvature
Wellbore:	DD		
Design:	Plan #1		

Project	S. Piceance, Garfield County, CO		
Map System:	US State Plane 1983	System Datum:	Mean Sea Level
Geo Datum:	North American Datum 1983		
Map Zone:	Colorado Central Zone		

Site		NWSE S19-T7S-R95W (PJ-19 Pad)			
Site Position:		Northing:	1,588,373.67 ft	Latitude:	39.421340
From:	Lat/Long	Easting:	2,283,011.65 ft	Longitude:	-108.038360
Position Uncertainty:	0.0 ft	Slot Radius:	13.200 in	Grid Convergence:	-1.60 °

Well	Daybreak Federal 19-2 (PJ-19)					
Well Position	+N/-S	0.0 ft	Northing:	1,588,357.50 ft	Latitude:	39.421290
	+E/-W	0.0 ft	Easting:	2,282,937.72 ft	Longitude:	-108.038620
Position Uncertainty		0.0 ft	Wellhead Elevation:	ft	Ground Level:	5,427.0 ft

Wellbore	DD				
Magnetics	Model Name	Sample Date	Declination	Dip Angle	Field Strength
			(°)	(°)	(nT)
	IGRF2010	3/12/2010	10.52	65.70	52,335

Design	Plan #1			
Audit Notes:				
Version:	Phase:	PLAN	Tie On Depth:	0.0
Vertical Section:	Depth From (TVD)	+N/-S	+E/-W	Direction
	(ft)	(ft)	(ft)	(°)
	0.0	0.0	0.0	8.06

Plan Sections										
Measured Depth	Inclination	Azimuth	Vertical Depth	+N/-S	+E/-W	Dogleg Rate	Build Rate	Turn Rate	TFO	Target
(ft)	(°)	(°)	(ft)	(ft)	(ft)	(°/100ft)	(°/100ft)	(°/100ft)	(°)	
0.0	0.00	0.00	0.0	0.0	0.0	0.00	0.00	0.00	0.00	
200.0	0.00	0.00	200.0	0.0	0.0	0.00	0.00	0.00	0.00	
1,100.0	27.00	8.06	1,067.1	206.1	29.2	3.00	3.00	0.00	8.06	
1,400.0	27.00	8.06	1,334.4	341.0	48.3	0.00	0.00	0.00	0.00	
1,962.5	43.88	8.06	1,791.0	662.7	93.9	3.00	3.00	0.00	0.00	
3,889.8	43.88	8.06	3,180.3	1,985.3	281.2	0.00	0.00	0.00	0.00	
5,352.3	0.00	0.00	4,504.0	2,513.2	355.9	3.00	-3.00	0.00	180.00	Daybreak Federal 19-
7,042.3	0.00	0.00	6,194.0	2,513.2	355.9	0.00	0.00	0.00	0.00	Daybreak Federal 19-
7,142.3	0.00	0.00	6,294.0	2,513.2	355.9	0.00	0.00	0.00	0.00	

Cathedral Energy Services

Planning Report

Database:	EDM 5000.1 US Multi Users DB	Local Co-ordinate Reference:	Well Daybreak Federal 19-2 (PJ-19)
Company:	EnCana Oil & Gas (USA) Inc	TVD Reference:	KBE @ 5449.0ft (Original Well Elev)
Project:	S. Piceance	MD Reference:	KBE @ 5449.0ft (Original Well Elev)
Site:	NWSE S19-T7S-R95W (PJ-19 Pad)	North Reference:	True
Well:	Daybreak Federal 19-2 (PJ-19)	Survey Calculation Method:	Minimum Curvature
Wellbore:	DD		
Design:	Plan #1		

Planned Survey

Measured Depth (ft)	Inclination (°)	Azimuth (°)	Vertical Depth (ft)	+N/-S (ft)	+E/-W (ft)	Vertical Section (ft)	Dogleg Rate (°/100ft)	Build Rate (°/100ft)	Comments / Formations
0.0	0.00	0.00	0.0	0.0	0.0	0.0	0.00	0.00	
100.0	0.00	0.00	100.0	0.0	0.0	0.0	0.00	0.00	
200.0	0.00	0.00	200.0	0.0	0.0	0.0	0.00	0.00	KOP = 200' MD
300.0	3.00	8.06	300.0	2.6	0.4	2.6	3.00	3.00	
400.0	6.00	8.06	399.6	10.4	1.5	10.5	3.00	3.00	
500.0	9.00	8.06	498.8	23.3	3.3	23.5	3.00	3.00	
600.0	12.00	8.06	597.1	41.3	5.9	41.7	3.00	3.00	
700.0	15.00	8.06	694.3	64.4	9.1	65.1	3.00	3.00	
800.0	18.00	8.06	790.2	92.6	13.1	93.5	3.00	3.00	
900.0	21.00	8.06	884.4	125.6	17.8	126.9	3.00	3.00	
1,000.0	24.00	8.06	976.8	163.5	23.2	165.1	3.00	3.00	
1,100.0	27.00	8.06	1,067.1	206.1	29.2	208.2	3.00	3.00	Start 300' hold at 1100' MD
1,200.0	27.00	8.06	1,156.2	251.1	35.6	253.6	0.00	0.00	Surface Casing
1,300.0	27.00	8.06	1,245.3	296.0	41.9	299.0	0.00	0.00	
1,400.0	27.00	8.06	1,334.4	341.0	48.3	344.4	0.00	0.00	End 300' hold at 1400' MD
1,500.0	30.00	8.06	1,422.2	388.2	55.0	392.1	3.00	3.00	
1,600.0	33.00	8.06	1,507.5	439.9	62.3	444.3	3.00	3.00	
1,700.0	36.00	8.06	1,589.9	496.0	70.2	500.9	3.00	3.00	
1,800.0	39.00	8.06	1,669.2	556.3	78.8	561.8	3.00	3.00	
1,900.0	42.00	8.06	1,745.2	620.6	87.9	626.8	3.00	3.00	
1,962.5	43.88	8.06	1,791.0	662.7	93.9	669.4	3.00	3.00	EOB at Inc. = 43.88°
2,000.0	43.88	8.06	1,818.0	688.5	97.5	695.3	0.00	0.00	
2,100.0	43.88	8.06	1,890.1	757.1	107.2	764.6	0.00	0.00	
2,200.0	43.88	8.06	1,962.2	825.7	116.9	833.9	0.00	0.00	
2,300.0	43.88	8.06	2,034.3	894.3	126.6	903.2	0.00	0.00	
2,400.0	43.88	8.06	2,106.4	963.0	136.4	972.6	0.00	0.00	
2,500.0	43.88	8.06	2,178.5	1,031.6	146.1	1,041.9	0.00	0.00	
2,600.0	43.88	8.06	2,250.5	1,100.2	155.8	1,111.2	0.00	0.00	
2,700.0	43.88	8.06	2,322.6	1,168.8	165.5	1,180.5	0.00	0.00	
2,800.0	43.88	8.06	2,394.7	1,237.5	175.2	1,249.8	0.00	0.00	
2,900.0	43.88	8.06	2,466.8	1,306.1	185.0	1,319.1	0.00	0.00	
3,000.0	43.88	8.06	2,538.9	1,374.7	194.7	1,388.4	0.00	0.00	
3,100.0	43.88	8.06	2,611.0	1,443.3	204.4	1,457.7	0.00	0.00	
3,200.0	43.88	8.06	2,683.0	1,512.0	214.1	1,527.0	0.00	0.00	
3,300.0	43.88	8.06	2,755.1	1,580.6	223.8	1,596.4	0.00	0.00	
3,400.0	43.88	8.06	2,827.2	1,649.2	233.6	1,665.7	0.00	0.00	
3,500.0	43.88	8.06	2,899.3	1,717.8	243.3	1,735.0	0.00	0.00	
3,600.0	43.88	8.06	2,971.4	1,786.5	253.0	1,804.3	0.00	0.00	
3,700.0	43.88	8.06	3,043.5	1,855.1	262.7	1,873.6	0.00	0.00	
3,800.0	43.88	8.06	3,115.5	1,923.7	272.4	1,942.9	0.00	0.00	
3,889.8	43.88	8.06	3,180.3	1,985.3	281.2	2,005.1	0.00	0.00	Start Drop -3.00
3,900.0	43.57	8.06	3,187.6	1,992.3	282.1	2,012.2	3.00	-3.00	
3,973.7	41.36	8.06	3,242.0	2,041.6	289.1	2,061.9	3.00	-3.00	Mesa Verde
4,000.0	40.57	8.06	3,261.9	2,058.6	291.5	2,079.2	3.00	-3.00	
4,100.0	37.57	8.06	3,339.5	2,121.0	300.4	2,142.2	3.00	-3.00	
4,200.0	34.57	8.06	3,420.3	2,179.3	308.6	2,201.1	3.00	-3.00	
4,300.0	31.57	8.06	3,504.1	2,233.4	316.3	2,255.6	3.00	-3.00	
4,400.0	28.57	8.06	3,590.6	2,283.0	323.3	2,305.7	3.00	-3.00	
4,500.0	25.57	8.06	3,679.7	2,328.0	329.7	2,351.2	3.00	-3.00	
4,600.0	22.57	8.06	3,771.0	2,368.4	335.4	2,392.0	3.00	-3.00	
4,698.6	19.61	8.06	3,863.0	2,403.5	340.4	2,427.5	3.00	-3.00	Williams Fork Fm
4,700.0	19.57	8.06	3,864.3	2,404.0	340.4	2,428.0	3.00	-3.00	

Cathedral Energy Services

Planning Report

Database:	EDM 5000.1 US Multi Users DB	Local Co-ordinate Reference:	Well Daybreak Federal 19-2 (PJ-19)
Company:	EnCana Oil & Gas (USA) Inc	TVD Reference:	KBE @ 5449.0ft (Original Well Elev)
Project:	S. Piceance	MD Reference:	KBE @ 5449.0ft (Original Well Elev)
Site:	NWSE S19-T7S-R95W (PJ-19 Pad)	North Reference:	True
Well:	Daybreak Federal 19-2 (PJ-19)	Survey Calculation Method:	Minimum Curvature
Wellbore:	DD		
Design:	Plan #1		

Planned Survey

Measured Depth (ft)	Inclination (°)	Azimuth (°)	Vertical Depth (ft)	+N/-S (ft)	+E/-W (ft)	Vertical Section (ft)	Dogleg Rate (°/100ft)	Build Rate (°/100ft)	Comments / Formations
4,800.0	16.57	8.06	3,959.3	2,434.7	344.8	2,459.0	3.00	-3.00	
4,900.0	13.57	8.06	4,055.9	2,460.4	348.4	2,485.0	3.00	-3.00	
5,000.0	10.57	8.06	4,153.7	2,481.1	351.4	2,505.9	3.00	-3.00	
5,025.7	9.80	8.06	4,179.0	2,485.6	352.0	2,510.4	3.00	-3.00	TOG (Inc.=9.8°)
5,100.0	7.57	8.06	4,252.4	2,496.7	353.6	2,521.7	3.00	-3.00	
5,200.0	4.57	8.06	4,351.8	2,507.2	355.1	2,532.2	3.00	-3.00	
5,300.0	1.57	8.06	4,451.7	2,512.5	355.8	2,537.6	3.00	-3.00	
5,352.3	0.00	0.00	4,504.0	2,513.2	355.9	2,538.3	3.00	-3.00	EOD at Inc. = 0° - Daybreak Federal 19-2 (PJ-19)
5,400.0	0.00	0.00	4,551.7	2,513.2	355.9	2,538.3	0.00	0.00	
5,500.0	0.00	0.00	4,651.7	2,513.2	355.9	2,538.3	0.00	0.00	
5,600.0	0.00	0.00	4,751.7	2,513.2	355.9	2,538.3	0.00	0.00	
5,700.0	0.00	0.00	4,851.7	2,513.2	355.9	2,538.3	0.00	0.00	
5,800.0	0.00	0.00	4,951.7	2,513.2	355.9	2,538.3	0.00	0.00	
5,900.0	0.00	0.00	5,051.7	2,513.2	355.9	2,538.3	0.00	0.00	
6,000.0	0.00	0.00	5,151.7	2,513.2	355.9	2,538.3	0.00	0.00	
6,100.0	0.00	0.00	5,251.7	2,513.2	355.9	2,538.3	0.00	0.00	
6,200.0	0.00	0.00	5,351.7	2,513.2	355.9	2,538.3	0.00	0.00	
6,300.0	0.00	0.00	5,451.7	2,513.2	355.9	2,538.3	0.00	0.00	
6,400.0	0.00	0.00	5,551.7	2,513.2	355.9	2,538.3	0.00	0.00	
6,500.0	0.00	0.00	5,651.7	2,513.2	355.9	2,538.3	0.00	0.00	
6,539.3	0.00	0.00	5,691.0	2,513.2	355.9	2,538.3	0.00	0.00	Coal Ridge
6,600.0	0.00	0.00	5,751.7	2,513.2	355.9	2,538.3	0.00	0.00	
6,700.0	0.00	0.00	5,851.7	2,513.2	355.9	2,538.3	0.00	0.00	
6,800.0	0.00	0.00	5,951.7	2,513.2	355.9	2,538.3	0.00	0.00	
6,900.0	0.00	0.00	6,051.7	2,513.2	355.9	2,538.3	0.00	0.00	
6,938.3	0.00	0.00	6,090.0	2,513.2	355.9	2,538.3	0.00	0.00	Rollins
7,000.0	0.00	0.00	6,151.7	2,513.2	355.9	2,538.3	0.00	0.00	
7,042.3	0.00	0.00	6,194.0	2,513.2	355.9	2,538.3	0.00	0.00	TD at 7042' MD - Daybreak Federal 19-2 (PJ-19)
7,100.0	0.00	0.00	6,251.7	2,513.2	355.9	2,538.3	0.00	0.00	
7,142.3	0.00	0.00	6,294.0	2,513.2	355.9	2,538.3	0.00	0.00	Permit TD at 7142' MD

Targets

Target Name	Dip Angle (°)	Dip Dir. (°)	TVD (ft)	+N/-S (ft)	+E/-W (ft)	Northing (ft)	Easting (ft)	Latitude	Longitude
- hit/miss target									
- Shape									
Daybreak Federal 19-2 (- plan hits target center - Circle (radius 25.0)	0.00	0.00	6,194.0	2,513.2	355.9	1,590,859.80	2,283,363.72	39.428190	-108.037360
Daybreak Federal 19-2 (- plan hits target center - Point	0.00	0.00	4,504.0	2,513.2	355.9	1,590,859.80	2,283,363.72	39.428190	-108.037360

Casing Points

Measured Depth (ft)	Vertical Depth (ft)	Name	Casing Diameter (in)	Hole Diameter (in)
1,200.0	1,156.2	Surface Casing	5.500	6.000

Cathedral Energy Services

Planning Report

Database:	EDM 5000.1 US Multi Users DB	Local Co-ordinate Reference:	Well Daybreak Federal 19-2 (PJ-19)
Company:	EnCana Oil & Gas (USA) Inc	TVD Reference:	KBE @ 5449.0ft (Original Well Elev)
Project:	S. Piceance	MD Reference:	KBE @ 5449.0ft (Original Well Elev)
Site:	NWSE S19-T7S-R95W (PJ-19 Pad)	North Reference:	True
Well:	Daybreak Federal 19-2 (PJ-19)	Survey Calculation Method:	Minimum Curvature
Wellbore:	DD		
Design:	Plan #1		

Formations

Measured Depth (ft)	Vertical Depth (ft)	Name	Lithology	Dip (°)	Dip Direction (°)
3,973.7	3,242.0	Mesa Verde		0.00	
4,698.6	3,863.0	Williams Fork Fm		0.00	
5,025.7	4,179.0	TOG (Inc.=9.8°)		0.00	
6,539.3	5,691.0	Coal Ridge		0.00	
6,938.3	6,090.0	Rollins		0.00	

Plan Annotations

Measured Depth (ft)	Vertical Depth (ft)	Local Coordinates		Comment
		+N/-S (ft)	+E/-W (ft)	
200.0	200.0	0.0	0.0	KOP = 200' MD
1,100.0	1,067.1	206.1	29.2	Start 300' hold at 1100' MD
1,400.0	1,334.4	341.0	48.3	End 300' hold at 1400' MD
1,962.5	1,791.0	662.7	93.9	EOB at Inc. = 43.88°
3,889.8	3,180.3	1,985.3	281.2	Start Drop -3.00
5,352.3	4,504.0	2,513.2	355.9	EOD at Inc. = 0°
7,042.3	6,194.0	2,513.2	355.9	TD at 7042' MD
7,142.3	6,294.0	2,513.2	355.9	Permit TD at 7142' MD

EnCana Oil & Gas (USA) Inc

S. Piceance

NWSE S19-T7S-R95W (PJ-19 Pad)

Daybreak Federal 19-2 (PJ-19)

DD

Plan #1

Anticollision Report

22 March, 2010

Cathedral Energy Services

Anticollision Report

Company:	EnCana Oil & Gas (USA) Inc	Local Co-ordinate Reference:	Well Daybreak Federal 19-2 (PJ-19)
Project:	S. Piceance	TVD Reference:	KBE @ 5449.0ft (Original Well Elev)
Reference Site:	NWSE S19-T7S-R95W (PJ-19 Pad)	MD Reference:	KBE @ 5449.0ft (Original Well Elev)
Site Error:	0.0ft	North Reference:	True
Reference Well:	Daybreak Federal 19-2 (PJ-19)	Survey Calculation Method:	Minimum Curvature
Well Error:	0.0ft	Output errors are at	2.00 sigma
Reference Wellbore	DD	Database:	EDM 5000.1 US Multi Users DB
Reference Design:	Plan #1	Offset TVD Reference:	Offset Datum

Reference	Plan #1		
Filter type:	NO GLOBAL FILTER: Using user defined selection & filtering criteria		
Interpolation Method:	Stations	Error Model:	Systematic Ellipse
Depth Range:	0.0 to 99,999.0ft	Scan Method:	Closest Approach 3D
Results Limited by:	Maximum center-center distance of 100.0ft	Error Surface:	Elliptical Conic
Warning Levels Evaluated at:	2.00 Sigma		

Survey Tool Program		Date	3/22/2010		
From (ft)	To (ft)	Survey (Wellbore)	Tool Name	Description	
0.0	7,142.3	Plan #1 (DD)	MWD	Geolink MWD	

Summary						
Site Name	Reference Measured Depth (ft)	Offset Measured Depth (ft)	Distance Between Centres (ft)	Distance Between Ellipses (ft)	Separation Factor	Warning
Offet Well - Wellbore - Design						
NESE S19-T7S-R95W (PI-19 PAD)						
Federal 19-10BB - DD - DD						Out of range
NWSE S19-T7S-R95W (PJ-19 Pad)						
Daybreak Federal 19-10A (PJ-19) - DD - Plan #1	200.0	200.0	51.4	50.7	82.664	CC, ES
Daybreak Federal 19-10A (PJ-19) - DD - Plan #1	1,000.0	986.7	92.4	86.0	14.346	SF
Daybreak Federal 19-2D (PJ-19) - DD - Plan #1	370.8	371.4	8.2	7.0	6.610	CC, ES
Daybreak Federal 19-2D (PJ-19) - DD - Plan #1	400.0	400.6	8.7	7.3	6.444	SF
Daybreak Federal 19-3BB (PJ-19) - DD - Plan #1	200.0	200.0	9.2	8.6	14.832	CC, ES
Daybreak Federal 19-3BB (PJ-19) - DD - Plan #1	300.0	300.0	11.6	10.6	11.906	SF
Daybreak Federal 19-6 (PJ-19) - DD - Plan #1	200.0	200.0	26.9	26.3	43.272	CC, ES
Daybreak Federal 19-6 (PJ-19) - DD - Plan #1	800.0	798.7	84.7	80.9	22.252	SF
Daybreak Federal 19-6BB (PJ 19) - DD - Plan #1	200.0	200.0	41.0	40.4	65.975	CC, ES
Daybreak Federal 19-6BB (PJ 19) - DD - Plan #1	700.0	689.6	99.6	96.2	29.898	SF
Daybreak Federal 19-6C (PJ-19) - DD - Plan #1	200.0	200.0	17.3	16.7	27.901	CC, ES
Daybreak Federal 19-6C (PJ-19) - DD - Plan #1	600.0	597.8	40.8	38.1	15.350	SF
Daybreak Federal 19-6D (PJ-19) - DD - Plan #1	200.0	200.0	32.9	32.3	53.013	CC, ES
Daybreak Federal 19-6D (PJ-19) - DD - Plan #1	700.0	693.4	79.9	76.4	23.273	SF
Daybreak Federal 19-7 (PJ-19) - DD - Plan #1	200.0	200.0	32.9	32.3	53.017	CC, ES
Daybreak Federal 19-7 (PJ-19) - DD - Plan #1	1,200.0	1,190.3	72.0	62.2	7.364	SF
Daybreak Federal 19-7BB (PJ-19) - DD - Plan #1	391.4	391.1	15.8	14.4	11.766	CC
Daybreak Federal 19-7BB (PJ-19) - DD - Plan #1	400.0	399.6	15.8	14.4	11.495	ES, SF
Daybreak Federal 19-7C (PJ-19) - DD - Plan #1	365.6	365.4	24.7	23.4	19.927	CC, ES
Daybreak Federal 19-7C (PJ-19) - DD - Plan #1	500.0	498.8	29.6	27.8	16.613	SF
Daybreak Federal 19-8 (PJ-19) - DD - Plan #1	200.0	200.0	69.8	69.2	112.338	CC, ES
Daybreak Federal 19-8 (PJ-19) - DD - Plan #1	600.0	585.3	88.9	86.4	36.469	SF
Daybreak Federal 19-8BB (PJ-19) - DD - Plan #1	200.0	200.0	75.7	75.1	121.794	CC, ES
Daybreak Federal 19-8BB (PJ-19) - DD - Plan #1	500.0	487.6	90.2	88.4	49.273	SF
Daybreak Federal 19-8C (PJ-19 Pad) - DD - Plan #1	200.0	200.0	43.0	42.4	69.201	CC, ES
Daybreak Federal 19-8C (PJ-19 Pad) - DD - Plan #1	800.0	785.8	89.2	84.9	20.310	SF
Daybreak Federal 19-8D (PJ-19) - DD - Plan #1	200.0	200.0	61.1	60.5	98.318	CC, ES
Daybreak Federal 19-8D (PJ-19) - DD - Plan #1	600.0	586.2	85.8	83.3	34.706	SF

CC - Min centre to center distance or covergent point, SF - min separation factor, ES - min ellipse separation

Cathedral Energy Services

Anticollision Report

Company:	EnCana Oil & Gas (USA) Inc	Local Co-ordinate Reference:	Well Daybreak Federal 19-2 (PJ-19)
Project:	S. Piceance	TVD Reference:	KBE @ 5449.0ft (Original Well Elev)
Reference Site:	NWSE S19-T7S-R95W (PJ-19 Pad)	MD Reference:	KBE @ 5449.0ft (Original Well Elev)
Site Error:	0.0ft	North Reference:	True
Reference Well:	Daybreak Federal 19-2 (PJ-19)	Survey Calculation Method:	Minimum Curvature
Well Error:	0.0ft	Output errors are at	2.00 sigma
Reference Wellbore	DD	Database:	EDM 5000.1 US Multi Users DB
Reference Design:	Plan #1	Offset TVD Reference:	Offset Datum

Offset Design NWSE S19-T7S-R95W (PJ-19 Pad) - Daybreak Federal 19-10A (PJ-19) - DD - Plan #1													Offset Site Error:	0.0 ft
Survey Program: 0-MWD													Offset Well Error:	0.0 ft
Reference		Offset		Semi Major Axis		Highside Toolface (°)	Distance		Total Uncertainty Axis	Separation Factor	Warning			
Measured Depth (ft)	Vertical Depth (ft)	Measured Depth (ft)	Vertical Depth (ft)	Reference (ft)	Offset (ft)		Offset Wellbore Centre +N/-S (ft)	+E/-W (ft)						
0.0	0.0	0.0	0.0	0.0	0.0	69.23	18.2	48.0	51.4					
100.0	100.0	100.0	100.0	0.1	0.1	69.23	18.2	48.0	51.4	51.1	0.27	188.643		
200.0	200.0	200.0	200.0	0.3	0.3	69.23	18.2	48.0	51.4	50.7	0.62	82.664	CC, ES	
300.0	300.0	298.0	297.9	0.5	0.5	61.84	20.4	49.2	52.1	51.1	0.98	53.282		
400.0	399.6	395.9	395.6	0.7	0.7	63.72	27.0	52.9	54.2	52.8	1.38	39.231		
500.0	498.8	493.8	492.6	1.0	1.0	66.54	38.0	58.9	57.9	56.0	1.88	30.763		
600.0	597.1	591.5	588.7	1.4	1.3	69.89	53.2	67.3	63.2	60.7	2.52	25.041		
700.0	694.3	690.8	685.8	1.8	1.7	74.67	71.6	77.5	69.3	65.9	3.32	20.878		
800.0	790.2	790.1	782.9	2.3	2.1	82.48	90.0	87.7	74.9	70.7	4.29	17.483		
900.0	884.4	888.8	879.3	3.0	2.5	92.60	108.3	97.8	82.0	76.6	5.37	15.255		
1,000.0	976.8	986.7	975.0	3.7	2.9	103.84	126.4	107.8	92.4	86.0	6.44	14.346	SF	

Cathedral Energy Services

Anticollision Report

Company:	EnCana Oil & Gas (USA) Inc	Local Co-ordinate Reference:	Well Daybreak Federal 19-2 (PJ-19)
Project:	S. Piceance	TVD Reference:	KBE @ 5449.0ft (Original Well Elev)
Reference Site:	NWSE S19-T7S-R95W (PJ-19 Pad)	MD Reference:	KBE @ 5449.0ft (Original Well Elev)
Site Error:	0.0ft	North Reference:	True
Reference Well:	Daybreak Federal 19-2 (PJ-19)	Survey Calculation Method:	Minimum Curvature
Well Error:	0.0ft	Output errors are at	2.00 sigma
Reference Wellbore	DD	Database:	EDM 5000.1 US Multi Users DB
Reference Design:	Plan #1	Offset TVD Reference:	Offset Datum

Offset Design NWSE S19-T7S-R95W (PJ-19 Pad) - Daybreak Federal 19-2D (PJ-19) - DD - Plan #1													Offset Site Error:	0.0 ft
Survey Program: 0-MWD													Offset Well Error:	0.0 ft
Reference		Offset		Semi Major Axis		Highside Toolface (°)	Distance		Total Uncertainty Axis	Separation Factor	Warning			
Measured Depth (ft)	Vertical Depth (ft)	Measured Depth (ft)	Vertical Depth (ft)	Reference (ft)	Offset (ft)		Offset Wellbore Centre +N/-S (ft)	+E/-W (ft)						
0.0	0.0	0.0	0.0	0.0	0.0	107.85	-3.6	11.3	11.9					
100.0	100.0	100.0	100.0	0.1	0.1	107.85	-3.6	11.3	11.9	11.6	0.27	43.600		
200.0	200.0	200.0	200.0	0.3	0.3	107.85	-3.6	11.3	11.9	11.2	0.62	19.106		
300.0	300.0	300.5	300.5	0.5	0.5	111.65	-2.3	9.0	10.0	9.0	0.98	10.169		
370.8	370.6	371.4	371.2	0.6	0.6	146.07	0.2	4.7	8.2	7.0	1.24	6.610 CC, ES		
400.0	399.6	400.6	400.2	0.7	0.7	164.85	1.8	2.5	8.7	7.3	1.35	6.444 SF		
500.0	498.8	500.8	499.8	1.0	0.9	-159.99	10.3	-3.6	14.8	13.0	1.78	8.285		
600.0	597.1	601.3	599.4	1.4	1.2	-149.45	23.9	-8.1	22.5	20.2	2.30	9.767		
700.0	694.3	702.3	698.6	1.8	1.6	-145.95	42.5	-10.9	30.1	27.2	2.90	10.360		
800.0	790.2	803.7	797.2	2.3	2.0	-145.14	66.1	-12.0	37.1	33.6	3.56	10.424		
900.0	884.4	905.5	894.8	3.0	2.5	-145.71	94.8	-11.4	43.6	39.4	4.26	10.239		
1,000.0	976.8	1,007.6	991.2	3.7	3.1	-147.14	128.5	-8.9	49.6	44.6	4.97	9.979		
1,100.0	1,067.1	1,109.8	1,085.7	4.4	3.8	-149.21	167.0	-4.8	55.0	49.4	5.64	9.756		
1,200.0	1,156.2	1,209.6	1,177.2	5.2	4.5	-151.50	206.5	0.0	60.7	54.5	6.24	9.740		
1,300.0	1,245.3	1,309.4	1,268.8	6.0	5.2	-153.40	246.0	4.8	66.5	59.8	6.79	9.799		
1,400.0	1,334.4	1,409.6	1,360.6	6.9	5.9	-155.00	285.7	9.6	72.4	65.0	7.33	9.870		
1,500.0	1,422.2	1,513.4	1,454.5	7.7	6.7	-156.61	329.7	15.6	77.5	69.7	7.81	9.922		
1,600.0	1,507.5	1,617.5	1,546.1	8.7	7.6	-158.70	378.5	23.4	82.3	74.1	8.17	10.068		
1,700.0	1,589.9	1,721.9	1,635.1	9.7	8.6	-161.22	432.1	33.0	86.6	78.3	8.37	10.356		
1,800.0	1,669.2	1,826.6	1,721.3	10.8	9.7	-164.13	490.4	44.4	90.7	82.4	8.37	10.843		
1,900.0	1,745.2	1,931.0	1,804.0	12.0	10.8	-167.39	552.8	57.4	94.7	86.5	8.17	11.590		
1,962.5	1,791.0	1,993.4	1,852.4	12.8	11.5	-169.49	591.2	65.6	98.4	90.5	7.97	12.345		

Cathedral Energy Services

Anticollision Report

Company:	EnCana Oil & Gas (USA) Inc	Local Co-ordinate Reference:	Well Daybreak Federal 19-2 (PJ-19)
Project:	S. Piceance	TVD Reference:	KBE @ 5449.0ft (Original Well Elev)
Reference Site:	NWSE S19-T7S-R95W (PJ-19 Pad)	MD Reference:	KBE @ 5449.0ft (Original Well Elev)
Site Error:	0.0ft	North Reference:	True
Reference Well:	Daybreak Federal 19-2 (PJ-19)	Survey Calculation Method:	Minimum Curvature
Well Error:	0.0ft	Output errors are at	2.00 sigma
Reference Wellbore	DD	Database:	EDM 5000.1 US Multi Users DB
Reference Design:	Plan #1	Offset TVD Reference:	Offset Datum

Offset Design NWSE S19-T7S-R95W (PJ-19 Pad) - Daybreak Federal 19-3BB (PJ-19) - DD - Plan #1												Offset Site Error:	0.0 ft
Survey Program: 0-MWD												Offset Well Error:	0.0 ft
Reference		Offset		Semi Major Axis		Distance							
Measured Depth (ft)	Vertical Depth (ft)	Measured Depth (ft)	Vertical Depth (ft)	Reference (ft)	Offset (ft)	Highside Toolface (°)	Offset Wellbore Centre +N/-S (ft)	+E/-W (ft)	Between Centres (ft)	Between Ellipses (ft)	Total Uncertainty Axis	Separation Factor	Warning
0.0	0.0	0.0	0.0	0.0	0.0	-142.19	-7.3	-5.7	9.2				
100.0	100.0	100.0	100.0	0.1	0.1	-142.19	-7.3	-5.7	9.2	8.9	0.27	33.847	
200.0	200.0	200.0	200.0	0.3	0.3	-142.19	-7.3	-5.7	9.2	8.6	0.62	14.832 CC, ES	
300.0	300.0	300.0	300.0	0.5	0.5	-156.67	-7.3	-5.7	11.6	10.6	0.97	11.906 SF	
400.0	399.6	400.3	400.2	0.7	0.7	-160.00	-4.8	-6.6	17.2	15.9	1.33	12.978	
500.0	498.8	500.7	500.3	1.0	0.9	-156.32	2.5	-9.5	24.5	22.7	1.72	14.230	
600.0	597.1	601.1	599.8	1.4	1.2	-150.73	14.7	-14.4	33.5	31.3	2.20	15.216	
700.0	694.3	701.3	698.4	1.8	1.5	-145.09	31.8	-21.2	44.7	41.9	2.84	15.752	
800.0	790.2	801.4	795.7	2.3	1.9	-140.03	53.5	-29.8	58.2	54.6	3.66	15.911	
900.0	884.4	901.2	891.3	3.0	2.5	-135.66	79.9	-40.3	74.2	69.5	4.68	15.864	
1,000.0	976.8	1,000.5	984.9	3.7	3.1	-131.93	110.8	-52.5	92.6	86.7	5.88	15.743	

Cathedral Energy Services

Anticollision Report

Company:	EnCana Oil & Gas (USA) Inc	Local Co-ordinate Reference:	Well Daybreak Federal 19-2 (PJ-19)
Project:	S. Piceance	TVD Reference:	KBE @ 5449.0ft (Original Well Elev)
Reference Site:	NWSE S19-T7S-R95W (PJ-19 Pad)	MD Reference:	KBE @ 5449.0ft (Original Well Elev)
Site Error:	0.0ft	North Reference:	True
Reference Well:	Daybreak Federal 19-2 (PJ-19)	Survey Calculation Method:	Minimum Curvature
Well Error:	0.0ft	Output errors are at	2.00 sigma
Reference Wellbore	DD	Database:	EDM 5000.1 US Multi Users DB
Reference Design:	Plan #1	Offset TVD Reference:	Offset Datum

Offset Design NWSE S19-T7S-R95W (PJ-19 Pad) - Daybreak Federal 19-6 (PJ-19) - DD - Plan #1												Offset Site Error:	0.0 ft
Survey Program: 0-MWD												Offset Well Error:	0.0 ft
Reference		Offset		Semi Major Axis			Distance				Total Uncertainty Axis	Separation Factor	Warning
Measured Depth (ft)	Vertical Depth (ft)	Measured Depth (ft)	Vertical Depth (ft)	Reference (ft)	Offset (ft)	Highside Toolface (°)	Offset Wellbore Centre +N/-S (ft)	+E/-W (ft)	Between Centres (ft)	Between Ellipses (ft)			
0.0	0.0	0.0	0.0	0.0	0.0	-122.80	-14.6	-22.6	26.9				
100.0	100.0	100.0	100.0	0.1	0.1	-122.80	-14.6	-22.6	26.9	26.6	0.27	98.750	
200.0	200.0	200.0	200.0	0.3	0.3	-122.80	-14.6	-22.6	26.9	26.3	0.62	43.272 CC, ES	
300.0	300.0	300.0	300.0	0.5	0.5	-134.78	-14.6	-22.6	28.7	27.7	0.97	29.425	
400.0	399.6	400.1	400.0	0.7	0.7	-139.71	-12.3	-23.9	34.0	32.7	1.35	25.246	
500.0	498.8	500.1	499.8	1.0	0.9	-140.61	-5.5	-27.8	42.3	40.6	1.77	23.862	
600.0	597.1	600.1	598.8	1.4	1.1	-139.18	5.9	-34.2	53.5	51.2	2.30	23.248	
700.0	694.3	699.6	696.7	1.8	1.5	-136.72	21.7	-43.2	67.6	64.6	2.97	22.753	
800.0	790.2	798.7	793.1	2.3	1.9	-133.97	41.7	-54.6	84.7	80.9	3.80	22.252 SF	

Cathedral Energy Services

Anticollision Report

Company:	EnCana Oil & Gas (USA) Inc	Local Co-ordinate Reference:	Well Daybreak Federal 19-2 (PJ-19)
Project:	S. Piceance	TVD Reference:	KBE @ 5449.0ft (Original Well Elev)
Reference Site:	NWSE S19-T7S-R95W (PJ-19 Pad)	MD Reference:	KBE @ 5449.0ft (Original Well Elev)
Site Error:	0.0ft	North Reference:	True
Reference Well:	Daybreak Federal 19-2 (PJ-19)	Survey Calculation Method:	Minimum Curvature
Well Error:	0.0ft	Output errors are at	2.00 sigma
Reference Wellbore	DD	Database:	EDM 5000.1 US Multi Users DB
Reference Design:	Plan #1	Offset TVD Reference:	Offset Datum

Offset Design NWSE S19-T7S-R95W (PJ-19 Pad) - Daybreak Federal 19-6BB (PJ 19) - DD - Plan #1													Offset Site Error:	0.0 ft
Survey Program: 0-MWD													Offset Well Error:	0.0 ft
Reference		Offset		Semi Major Axis			Distance						Warning	
Measured Depth (ft)	Vertical Depth (ft)	Measured Depth (ft)	Vertical Depth (ft)	Reference (ft)	Offset (ft)	Highside Toolface (°)	Offset Wellbore Centre +N/-S (ft)	+E/-W (ft)	Between Centres (ft)	Between Ellipses (ft)	Total Uncertainty Axis	Separation Factor		
0.0	0.0	0.0	0.0	0.0	0.0	-116.38	-18.2	-36.7	41.0					
100.0	100.0	100.0	100.0	0.1	0.1	-116.38	-18.2	-36.7	41.0	40.7	0.27	150.558		
200.0	200.0	200.0	200.0	0.3	0.3	-116.38	-18.2	-36.7	41.0	40.4	0.62	65.975 CC, ES		
300.0	300.0	299.2	299.2	0.5	0.5	-124.00	-16.4	-38.6	43.4	42.4	0.98	44.143		
400.0	399.6	398.1	397.8	0.7	0.7	-122.93	-11.1	-44.1	50.4	49.0	1.40	36.009		
500.0	498.8	496.3	495.2	1.0	1.0	-121.64	-2.3	-53.3	62.2	60.3	1.92	32.448		
600.0	597.1	593.6	590.8	1.4	1.3	-120.41	9.8	-65.9	78.6	76.1	2.56	30.748		
700.0	694.3	689.6	684.3	1.8	1.8	-119.31	25.0	-81.8	99.6	96.2	3.33	29.898 SF		

Cathedral Energy Services

Anticollision Report

Company:	EnCana Oil & Gas (USA) Inc	Local Co-ordinate Reference:	Well Daybreak Federal 19-2 (PJ-19)
Project:	S. Piceance	TVD Reference:	KBE @ 5449.0ft (Original Well Elev)
Reference Site:	NWSE S19-T7S-R95W (PJ-19 Pad)	MD Reference:	KBE @ 5449.0ft (Original Well Elev)
Site Error:	0.0ft	North Reference:	True
Reference Well:	Daybreak Federal 19-2 (PJ-19)	Survey Calculation Method:	Minimum Curvature
Well Error:	0.0ft	Output errors are at	2.00 sigma
Reference Wellbore	DD	Database:	EDM 5000.1 US Multi Users DB
Reference Design:	Plan #1	Offset TVD Reference:	Offset Datum

Offset Design NWSE S19-T7S-R95W (PJ-19 Pad) - Daybreak Federal 19-6C (PJ-19) - DD - Plan #1													Offset Site Error:	0.0 ft
Survey Program: 0-MWD													Offset Well Error:	0.0 ft
Reference		Offset		Semi Major Axis			Distance						Warning	
Measured Depth (ft)	Vertical Depth (ft)	Measured Depth (ft)	Vertical Depth (ft)	Reference (ft)	Offset (ft)	Highside Toolface (°)	Offset Wellbore Centre +N/-S (ft)	+E/-W (ft)	Between Centres (ft)	Between Ellipses (ft)	Total Uncertainty Axis	Separation Factor		
0.0	0.0	0.0	0.0	0.0	0.0	-102.11	-3.6	-17.0	17.3					
100.0	100.0	100.0	100.0	0.1	0.1	-102.11	-3.6	-17.0	17.3	17.1	0.27	63.672		
200.0	200.0	200.0	200.0	0.3	0.3	-102.11	-3.6	-17.0	17.3	16.7	0.62	27.901 CC, ES		
300.0	300.0	299.8	299.7	0.5	0.5	-109.85	-1.3	-18.0	18.8	17.8	0.99	19.083		
400.0	399.6	399.4	399.1	0.7	0.7	-109.12	5.8	-21.3	23.2	21.8	1.42	16.371		
500.0	498.8	498.8	497.6	1.0	1.0	-108.32	17.6	-26.7	30.6	28.6	1.97	15.541		
600.0	597.1	597.8	595.0	1.4	1.4	-107.63	33.9	-34.2	40.8	38.1	2.66	15.350 SF		
700.0	694.3	696.4	690.8	1.8	1.8	-107.04	54.6	-43.7	53.9	50.4	3.50	15.377		
800.0	790.2	794.3	784.7	2.3	2.3	-106.52	79.7	-55.3	69.8	65.3	4.51	15.475		
900.0	884.4	891.5	876.5	3.0	2.9	-106.04	108.9	-68.7	88.4	82.8	5.67	15.594		

Cathedral Energy Services

Anticollision Report

Company:	EnCana Oil & Gas (USA) Inc	Local Co-ordinate Reference:	Well Daybreak Federal 19-2 (PJ-19)
Project:	S. Piceance	TVD Reference:	KBE @ 5449.0ft (Original Well Elev)
Reference Site:	NWSE S19-T7S-R95W (PJ-19 Pad)	MD Reference:	KBE @ 5449.0ft (Original Well Elev)
Site Error:	0.0ft	North Reference:	True
Reference Well:	Daybreak Federal 19-2 (PJ-19)	Survey Calculation Method:	Minimum Curvature
Well Error:	0.0ft	Output errors are at	2.00 sigma
Reference Wellbore	DD	Database:	EDM 5000.1 US Multi Users DB
Reference Design:	Plan #1	Offset TVD Reference:	Offset Datum

Offset Design NWSE S19-T7S-R95W (PJ-19 Pad) - Daybreak Federal 19-6D (PJ-19) - DD - Plan #1													Offset Site Error:	0.0 ft
Survey Program: 0-MWD													Offset Well Error:	0.0 ft
Reference		Offset		Semi Major Axis			Distance						Warning	
Measured Depth (ft)	Vertical Depth (ft)	Measured Depth (ft)	Vertical Depth (ft)	Reference (ft)	Offset (ft)	Highside Toolface (°)	Offset Wellbore Centre +N/-S (ft)	+E/-W (ft)	Between Centres (ft)	Between Ellipses (ft)	Total Uncertainty Axis	Separation Factor		
0.0	0.0	0.0	0.0	0.0	0.0	-109.37	-10.9	-31.1	32.9					
100.0	100.0	100.0	100.0	0.1	0.1	-109.37	-10.9	-31.1	32.9	32.7	0.27	120.978		
200.0	200.0	200.0	200.0	0.3	0.3	-109.37	-10.9	-31.1	32.9	32.3	0.62	53.013 CC, ES		
300.0	300.0	299.5	299.5	0.5	0.5	-117.06	-8.8	-32.5	34.8	33.8	0.98	35.393		
400.0	399.6	398.8	398.5	0.7	0.7	-116.17	-2.4	-36.9	40.5	39.1	1.41	28.705		
500.0	498.8	497.7	496.5	1.0	1.0	-115.09	8.1	-44.2	49.9	48.0	1.95	25.659		
600.0	597.1	596.0	593.1	1.4	1.3	-114.05	22.8	-54.3	63.1	60.4	2.62	24.114		
700.0	694.3	693.4	687.9	1.8	1.8	-113.13	41.3	-67.0	79.9	76.4	3.43	23.273 SF		

Cathedral Energy Services

Anticollision Report

Company:	EnCana Oil & Gas (USA) Inc	Local Co-ordinate Reference:	Well Daybreak Federal 19-2 (PJ-19)
Project:	S. Piceance	TVD Reference:	KBE @ 5449.0ft (Original Well Elev)
Reference Site:	NWSE S19-T7S-R95W (PJ-19 Pad)	MD Reference:	KBE @ 5449.0ft (Original Well Elev)
Site Error:	0.0ft	North Reference:	True
Reference Well:	Daybreak Federal 19-2 (PJ-19)	Survey Calculation Method:	Minimum Curvature
Well Error:	0.0ft	Output errors are at	2.00 sigma
Reference Wellbore	DD	Database:	EDM 5000.1 US Multi Users DB
Reference Design:	Plan #1	Offset TVD Reference:	Offset Datum

Offset Design NWSE S19-T7S-R95W (PJ-19 Pad) - Daybreak Federal 19-7 (PJ-19) - DD - Plan #1													Offset Site Error:	0.0 ft
Survey Program: 0-MWD													Offset Well Error:	0.0 ft
Reference		Offset		Semi Major Axis			Distance							Warning
Measured Depth (ft)	Vertical Depth (ft)	Measured Depth (ft)	Vertical Depth (ft)	Reference (ft)	Offset (ft)	Highside Toolface (°)	Offset Wellbore Centre +N/-S (ft)	+E/-W (ft)	Between Centres (ft)	Between Ellipses (ft)	Total Uncertainty Axis	Separation Factor		
0.0	0.0	0.0	0.0	0.0	0.0	70.62	10.9	31.1	32.9					
100.0	100.0	100.0	100.0	0.1	0.1	70.62	10.9	31.1	32.9	32.7	0.27	120.988		
200.0	200.0	200.0	200.0	0.3	0.3	70.62	10.9	31.1	32.9	32.3	0.62	53.017 CC, ES		
300.0	300.0	299.0	298.9	0.5	0.5	63.02	13.4	31.9	33.3	32.3	0.98	33.986		
400.0	399.6	397.9	397.5	0.7	0.7	64.34	20.6	34.3	34.5	33.1	1.40	24.713		
500.0	498.8	496.8	495.6	1.0	1.0	66.35	32.8	38.4	36.5	34.6	1.91	19.050		
600.0	597.1	595.7	592.9	1.4	1.3	68.81	49.7	44.0	39.3	36.7	2.58	15.246		
700.0	694.3	694.6	689.0	1.8	1.8	71.46	71.3	51.2	43.0	39.6	3.41	12.604		
800.0	790.2	793.4	783.9	2.3	2.3	74.11	97.7	60.0	47.6	43.2	4.43	10.748		
900.0	884.4	892.5	877.5	3.0	2.9	76.97	128.4	70.3	53.0	47.4	5.62	9.437		
1,000.0	976.8	992.1	971.4	3.7	3.5	83.37	160.3	80.9	58.1	51.1	7.01	8.291		
1,100.0	1,067.1	1,091.4	1,064.8	4.4	4.1	93.28	192.0	91.5	64.0	55.5	8.49	7.530		
1,200.0	1,156.2	1,190.3	1,157.9	5.2	4.7	103.49	223.6	102.1	72.0	62.2	9.78	7.364 SF		
1,300.0	1,245.3	1,289.2	1,251.1	6.0	5.3	111.48	255.2	112.6	81.9	71.0	10.85	7.544		
1,400.0	1,334.4	1,388.2	1,344.2	6.9	5.9	117.67	286.8	123.2	93.0	81.2	11.78	7.890		

Cathedral Energy Services

Anticollision Report

Company:	EnCana Oil & Gas (USA) Inc	Local Co-ordinate Reference:	Well Daybreak Federal 19-2 (PJ-19)
Project:	S. Piceance	TVD Reference:	KBE @ 5449.0ft (Original Well Elev)
Reference Site:	NWSE S19-T7S-R95W (PJ-19 Pad)	MD Reference:	KBE @ 5449.0ft (Original Well Elev)
Site Error:	0.0ft	North Reference:	True
Reference Well:	Daybreak Federal 19-2 (PJ-19)	Survey Calculation Method:	Minimum Curvature
Well Error:	0.0ft	Output errors are at	2.00 sigma
Reference Wellbore	DD	Database:	EDM 5000.1 US Multi Users DB
Reference Design:	Plan #1	Offset TVD Reference:	Offset Datum

Offset Design NWSE S19-T7S-R95W (PJ-19 Pad) - Daybreak Federal 19-7BB (PJ-19) - DD - Plan #1												Offset Site Error:	0.0 ft
Survey Program: 0-MWD												Offset Well Error:	0.0 ft
Reference		Offset		Semi Major Axis			Distance						
Measured Depth (ft)	Vertical Depth (ft)	Measured Depth (ft)	Vertical Depth (ft)	Reference (ft)	Offset (ft)	Highside Toolface (°)	Offset Wellbore Centre +N/-S (ft)	+E/-W (ft)	Between Centres (ft)	Between Ellipses (ft)	Total Uncertainty Axis	Separation Factor	Warning
0.0	0.0	0.0	0.0	0.0	0.0	66.73	7.3	17.0	18.5				
100.0	100.0	100.0	100.0	0.1	0.1	66.73	7.3	17.0	18.5	18.2	0.27	67.766	
200.0	200.0	200.0	200.0	0.3	0.3	66.73	7.3	17.0	18.5	17.8	0.62	29.695	
300.0	300.0	300.0	300.0	0.5	0.5	66.15	7.3	17.0	17.2	16.3	0.98	17.635	
391.4	391.1	391.1	391.1	0.7	0.6	89.97	7.3	17.0	15.8	14.4	1.34	11.766 CC	
400.0	399.6	399.6	399.6	0.7	0.7	93.14	7.3	17.0	15.8	14.4	1.37	11.495 ES, SF	
500.0	498.8	498.8	498.8	1.0	0.8	131.10	7.3	17.0	21.0	19.3	1.76	11.958	
600.0	597.1	598.6	598.6	1.4	1.0	151.45	9.8	17.5	33.6	31.6	2.09	16.092	
700.0	694.3	699.3	698.9	1.8	1.2	159.87	17.5	19.1	48.2	45.8	2.43	19.846	
800.0	790.2	800.8	799.6	2.3	1.5	164.02	30.4	21.7	63.4	60.6	2.78	22.810	
900.0	884.4	903.2	900.2	3.0	1.8	166.30	48.8	25.5	78.8	75.6	3.14	25.092	
1,000.0	976.8	1,006.5	1,000.6	3.7	2.2	167.61	72.7	30.5	94.1	90.6	3.51	26.817	

Cathedral Energy Services

Anticollision Report

Company:	EnCana Oil & Gas (USA) Inc	Local Co-ordinate Reference:	Well Daybreak Federal 19-2 (PJ-19)
Project:	S. Piceance	TVD Reference:	KBE @ 5449.0ft (Original Well Elev)
Reference Site:	NWSE S19-T7S-R95W (PJ-19 Pad)	MD Reference:	KBE @ 5449.0ft (Original Well Elev)
Site Error:	0.0ft	North Reference:	True
Reference Well:	Daybreak Federal 19-2 (PJ-19)	Survey Calculation Method:	Minimum Curvature
Well Error:	0.0ft	Output errors are at	2.00 sigma
Reference Wellbore	DD	Database:	EDM 5000.1 US Multi Users DB
Reference Design:	Plan #1	Offset TVD Reference:	Offset Datum

Offset Design NWSE S19-T7S-R95W (PJ-19 Pad) - Daybreak Federal 19-7C (PJ-19) - DD - Plan #1												Offset Site Error:	0.0 ft
Survey Program: 0-MWD												Offset Well Error:	0.0 ft
Reference		Offset		Semi Major Axis			Distance						Warning
Measured Depth (ft)	Vertical Depth (ft)	Measured Depth (ft)	Vertical Depth (ft)	Reference (ft)	Offset (ft)	Highside Toolface (°)	Offset Wellbore Centre +N/-S (ft)	+E/-W (ft)	Between Centres (ft)	Between Ellipses (ft)	Total Uncertainty Axis	Separation Factor	
0.0	0.0	0.0	0.0	0.0	0.0	81.84	3.6	25.4	25.7				
100.0	100.0	100.0	100.0	0.1	0.1	81.84	3.6	25.4	25.7	25.4	0.27	94.337	
200.0	200.0	200.0	200.0	0.3	0.3	81.84	3.6	25.4	25.7	25.1	0.62	41.339	
300.0	300.0	300.0	300.0	0.5	0.5	79.54	3.6	25.4	25.1	24.1	0.98	25.630	
365.6	365.4	365.4	365.4	0.6	0.6	90.00	3.6	25.4	24.7	23.4	1.24	19.927 CC, ES	
400.0	399.6	399.6	399.6	0.7	0.7	97.55	3.6	25.4	24.9	23.5	1.37	18.129	
500.0	498.8	498.8	498.8	1.0	0.8	123.20	3.6	25.4	29.6	27.8	1.78	16.613 SF	
600.0	597.1	597.1	597.1	1.4	1.0	143.89	3.6	25.4	42.5	40.3	2.13	19.903	
700.0	694.3	694.3	694.3	1.8	1.2	156.20	3.6	25.4	62.9	60.5	2.45	25.706	
800.0	790.2	792.0	792.0	2.3	1.3	163.27	4.1	25.5	89.3	86.6	2.76	32.428	

Cathedral Energy Services

Anticollision Report

Company:	EnCana Oil & Gas (USA) Inc	Local Co-ordinate Reference:	Well Daybreak Federal 19-2 (PJ-19)
Project:	S. Piceance	TVD Reference:	KBE @ 5449.0ft (Original Well Elev)
Reference Site:	NWSE S19-T7S-R95W (PJ-19 Pad)	MD Reference:	KBE @ 5449.0ft (Original Well Elev)
Site Error:	0.0ft	North Reference:	True
Reference Well:	Daybreak Federal 19-2 (PJ-19)	Survey Calculation Method:	Minimum Curvature
Well Error:	0.0ft	Output errors are at	2.00 sigma
Reference Wellbore	DD	Database:	EDM 5000.1 US Multi Users DB
Reference Design:	Plan #1	Offset TVD Reference:	Offset Datum

Offset Design NWSE S19-T7S-R95W (PJ-19 Pad) - Daybreak Federal 19-8 (PJ-19) - DD - Plan #1													Offset Site Error: 0.0 ft			
Survey Program: 0-MWD															Offset Well Error: 0.0 ft	
Reference		Offset		Semi Major Axis			Distance							Warning		
Measured Depth (ft)	Vertical Depth (ft)	Measured Depth (ft)	Vertical Depth (ft)	Reference (ft)	Offset (ft)	Highside Toolface (°)	Offset Wellbore Centre +N/-S (ft) +E/-W (ft)		Between Centres (ft)	Between Ellipses (ft)	Total Uncertainty Axis	Separation Factor				
0.0	0.0	0.0	0.0	0.0	0.0	68.57	25.5	65.0	69.8							
100.0	100.0	100.0	100.0	0.1	0.1	68.57	25.5	65.0	69.8	69.5	0.27	256.362				
200.0	200.0	200.0	200.0	0.3	0.3	68.57	25.5	65.0	69.8	69.2	0.62	112.338	CC, ES			
300.0	300.0	296.7	296.7	0.5	0.5	61.51	27.2	66.7	70.9	69.9	0.97	72.863				
400.0	399.6	393.3	392.9	0.7	0.7	64.30	32.3	72.0	74.2	72.8	1.36	54.423				
500.0	498.8	489.5	488.4	1.0	1.0	68.40	40.7	80.7	80.0	78.2	1.84	43.610				
600.0	597.1	585.3	582.7	1.4	1.3	73.13	52.4	92.8	88.9	86.4	2.44	36.469	SF			

Cathedral Energy Services

Anticollision Report

Company:	EnCana Oil & Gas (USA) Inc	Local Co-ordinate Reference:	Well Daybreak Federal 19-2 (PJ-19)
Project:	S. Piceance	TVD Reference:	KBE @ 5449.0ft (Original Well Elev)
Reference Site:	NWSE S19-T7S-R95W (PJ-19 Pad)	MD Reference:	KBE @ 5449.0ft (Original Well Elev)
Site Error:	0.0ft	North Reference:	True
Reference Well:	Daybreak Federal 19-2 (PJ-19)	Survey Calculation Method:	Minimum Curvature
Well Error:	0.0ft	Output errors are at	2.00 sigma
Reference Wellbore	DD	Database:	EDM 5000.1 US Multi Users DB
Reference Design:	Plan #1	Offset TVD Reference:	Offset Datum

Offset Design NWSE S19-T7S-R95W (PJ-19 Pad) - Daybreak Federal 19-8BB (PJ-19) - DD - Plan #1												Offset Site Error: 0.0 ft	
Survey Program: 0-MWD												Offset Well Error: 0.0 ft	
Reference		Offset		Semi Major Axis			Distance						Warning
Measured Depth	Vertical Depth	Measured Depth	Vertical Depth	Reference	Offset	Highside Toolface	Offset Wellbore Centre		Between Centres	Between Ellipses	Total Uncertainty	Separation Factor	
(ft)	(ft)	(ft)	(ft)	(ft)	(ft)	(°)	+N/-S (ft)	+E/-W (ft)	(ft)	(ft)	Axis		
0.0	0.0	0.0	0.0	0.0	0.0	76.07	18.2	73.5	75.7				
100.0	100.0	100.0	100.0	0.1	0.1	76.07	18.2	73.5	75.7	75.4	0.27	277.940	
200.0	200.0	200.0	200.0	0.3	0.3	76.07	18.2	73.5	75.7	75.1	0.62	121.794 CC, ES	
300.0	300.0	296.3	296.2	0.5	0.5	69.26	19.4	75.6	77.2	76.2	0.97	79.388	
400.0	399.6	392.2	391.9	0.7	0.7	72.71	22.8	82.0	81.8	80.5	1.36	60.095	
500.0	498.8	487.6	486.5	1.0	1.0	77.57	28.4	92.5	90.2	88.4	1.83	49.273 SF	

Cathedral Energy Services

Anticollision Report

Company:	EnCana Oil & Gas (USA) Inc	Local Co-ordinate Reference:	Well Daybreak Federal 19-2 (PJ-19)
Project:	S. Piceance	TVD Reference:	KBE @ 5449.0ft (Original Well Elev)
Reference Site:	NWSE S19-T7S-R95W (PJ-19 Pad)	MD Reference:	KBE @ 5449.0ft (Original Well Elev)
Site Error:	0.0ft	North Reference:	True
Reference Well:	Daybreak Federal 19-2 (PJ-19)	Survey Calculation Method:	Minimum Curvature
Well Error:	0.0ft	Output errors are at	2.00 sigma
Reference Wellbore	DD	Database:	EDM 5000.1 US Multi Users DB
Reference Design:	Plan #1	Offset TVD Reference:	Offset Datum

Offset Design NWSE S19-T7S-R95W (PJ-19 Pad) - Daybreak Federal 19-8C (PJ-19 Pad) - DD - Plan #1													Offset Site Error: 0.0 ft
Survey Program: 0-MWD													Offset Well Error: 0.0 ft
Reference		Offset		Semi Major Axis		Distance							
Measured Depth (ft)	Vertical Depth (ft)	Measured Depth (ft)	Vertical Depth (ft)	Reference (ft)	Offset (ft)	Highside Toolface (°)	Offset Wellbore Centre +N/-S (ft)	+E/-W (ft)	Between Centres (ft)	Between Ellipses (ft)	Total Uncertainty Axis	Separation Factor	Warning
0.0	0.0	0.0	0.0	0.0	0.0	80.24	7.3	42.4	43.0				
100.0	100.0	100.0	100.0	0.1	0.1	80.24	7.3	42.4	43.0	42.7	0.27	157.921	
200.0	200.0	200.0	200.0	0.3	0.3	80.24	7.3	42.4	43.0	42.4	0.62	69.201	CC, ES
300.0	300.0	298.3	298.2	0.5	0.5	73.20	9.2	44.0	44.2	43.2	0.98	45.121	
400.0	399.6	396.5	396.1	0.7	0.7	75.96	15.0	48.9	47.8	46.4	1.39	34.332	
500.0	498.8	494.4	493.2	1.0	1.0	79.70	24.6	56.9	53.9	52.0	1.91	28.273	
600.0	597.1	592.0	589.3	1.4	1.3	83.62	38.0	68.1	62.9	60.3	2.57	24.467	
700.0	694.3	689.2	683.9	1.8	1.8	87.19	55.0	82.4	74.6	71.2	3.40	21.971	
800.0	790.2	785.8	776.7	2.3	2.3	90.17	75.6	99.7	89.2	84.9	4.39	20.310	SF

Cathedral Energy Services

Anticollision Report

Company:	EnCana Oil & Gas (USA) Inc	Local Co-ordinate Reference:	Well Daybreak Federal 19-2 (PJ-19)
Project:	S. Piceance	TVD Reference:	KBE @ 5449.0ft (Original Well Elev)
Reference Site:	NWSE S19-T7S-R95W (PJ-19 Pad)	MD Reference:	KBE @ 5449.0ft (Original Well Elev)
Site Error:	0.0ft	North Reference:	True
Reference Well:	Daybreak Federal 19-2 (PJ-19)	Survey Calculation Method:	Minimum Curvature
Well Error:	0.0ft	Output errors are at	2.00 sigma
Reference Wellbore	DD	Database:	EDM 5000.1 US Multi Users DB
Reference Design:	Plan #1	Offset TVD Reference:	Offset Datum

Offset Design NWSE S19-T7S-R95W (PJ-19 Pad) - Daybreak Federal 19-8D (PJ-19) - DD - Plan #1													Offset Site Error: 0.0 ft			
Survey Program: 0-MWD															Offset Well Error: 0.0 ft	
Reference		Offset		Semi Major Axis			Distance							Warning		
Measured Depth (ft)	Vertical Depth (ft)	Measured Depth (ft)	Vertical Depth (ft)	Reference (ft)	Offset (ft)	Highside Toolface (°)	Offset Wellbore Centre +N/-S (ft) +E/-W (ft)		Between Centres (ft)	Between Ellipses (ft)	Total Uncertainty Axis	Separation Factor				
0.0	0.0	0.0	0.0	0.0	0.0	76.20	14.6	59.3	61.1							
100.0	100.0	100.0	100.0	0.1	0.1	76.20	14.6	59.3	61.1	60.8	0.27	224.368				
200.0	200.0	200.0	200.0	0.3	0.3	76.20	14.6	59.3	61.1	60.5	0.62	98.318 CC, ES				
300.0	300.0	297.1	297.1	0.5	0.5	69.38	16.1	61.3	62.5	61.5	0.97	64.124				
400.0	399.6	394.0	393.7	0.7	0.7	72.77	20.5	67.2	66.8	65.4	1.37	48.726				
500.0	498.8	490.4	489.3	1.0	1.0	77.47	27.8	77.0	74.4	72.6	1.86	40.106				
600.0	597.1	586.2	583.6	1.4	1.3	82.51	37.9	90.5	85.8	83.3	2.47	34.706 SF				

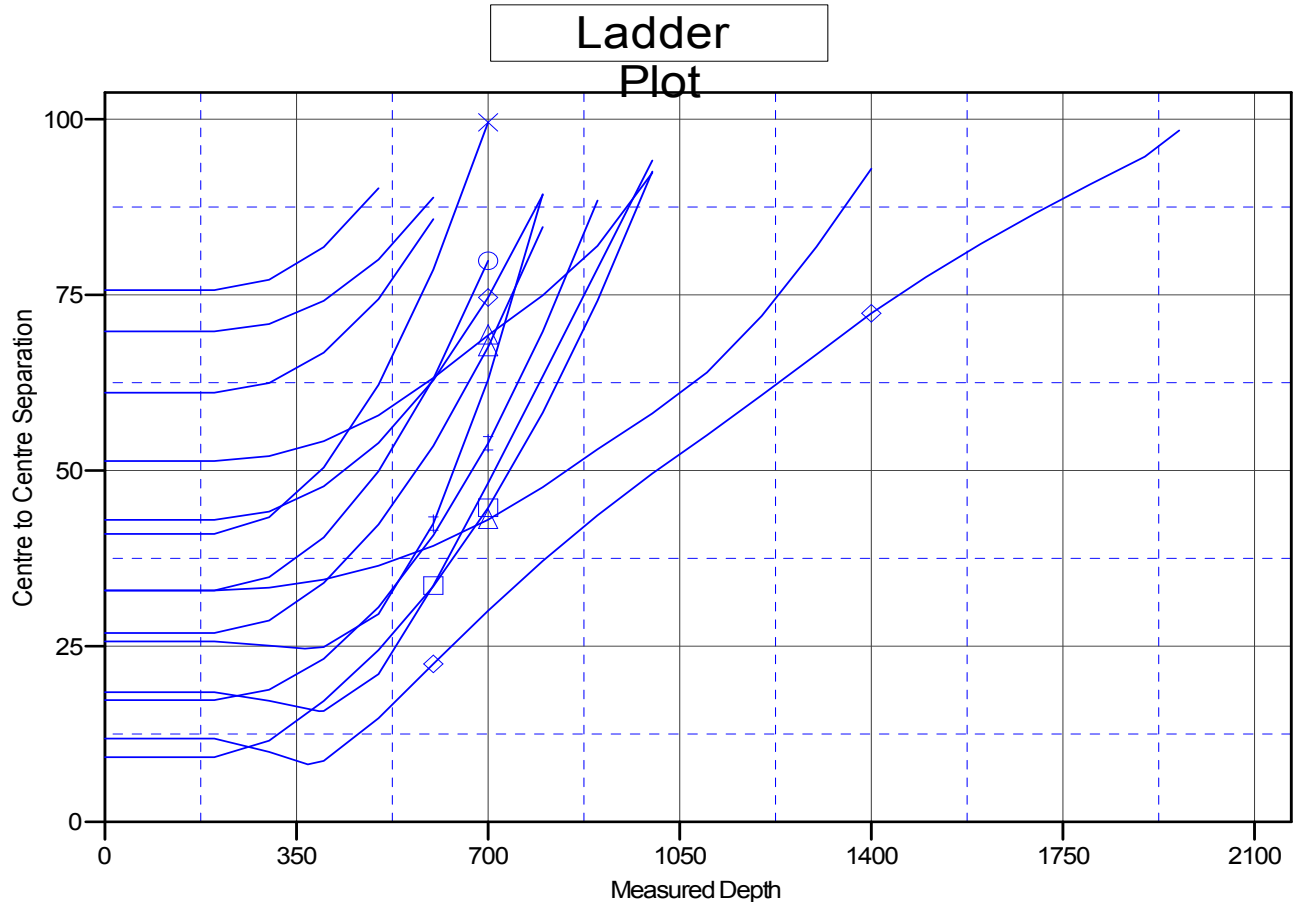
Cathedral Energy Services

Anticollision Report

Company:	EnCana Oil & Gas (USA) Inc	Local Co-ordinate Reference:	Well Daybreak Federal 19-2 (PJ-19)
Project:	S. Piceance	TVD Reference:	KBE @ 5449.0ft (Original Well Elev)
Reference Site:	NWSE S19-T7S-R95W (PJ-19 Pad)	MD Reference:	KBE @ 5449.0ft (Original Well Elev)
Site Error:	0.0ft	North Reference:	True
Reference Well:	Daybreak Federal 19-2 (PJ-19)	Survey Calculation Method:	Minimum Curvature
Well Error:	0.0ft	Output errors are at	2.00 sigma
Reference Wellbore	DD	Database:	EDM 5000.1 US Multi Users DB
Reference Design:	Plan #1	Offset TVD Reference:	Offset Datum

Reference Depths are relative to KBE @ 5449.0ft (Original Well Elev)
Offset Depths are relative to Offset Datum
Central Meridian is -105.500000 °

Coordinates are relative to: Daybreak Federal 19-2 (PJ-19)
Coordinate System is US State Plane 1983, Colorado Central Zone
Grid Convergence at Surface is: -1.60°



LEGEND

- Daybreak Federal 19-7 (PJ-19), DD, Plan #1 V0
- Daybreak Federal 19-6C (PJ-19), DD, Plan #1 V0
- Daybreak Federal 19-6 (PJ-19), DD, Plan #1 V0
- Daybreak Federal 19-7C (PJ-19), DD, Plan #1 V0
- Daybreak Federal 19-7BB (PJ-19), DD, Plan #1 V0
- Daybreak Federal 19-8D (PJ-19), DD, Plan #1 V0
- Daybreak Federal 19-8 (PJ-19), DD, Plan #1 V0
- Daybreak Federal 19-6BB (PJ-19), DD, Plan #1 V0
- Daybreak Federal 19-3BB (PJ-19), DD, Plan #1 V0
- Daybreak Federal 19-6D (PJ-19), DD, Plan #1 V0
- Daybreak Federal 19-2D (PJ-19), DD, Plan #1 V0
- Daybreak Federal 19-8BB (PJ-19), DD, Plan #1 V0
- Daybreak Federal 19-8C (PJ-19 Pad), DD, Plan #1 V0
- Daybreak Federal 19-10A (PJ-19), DD, Plan #1 V0