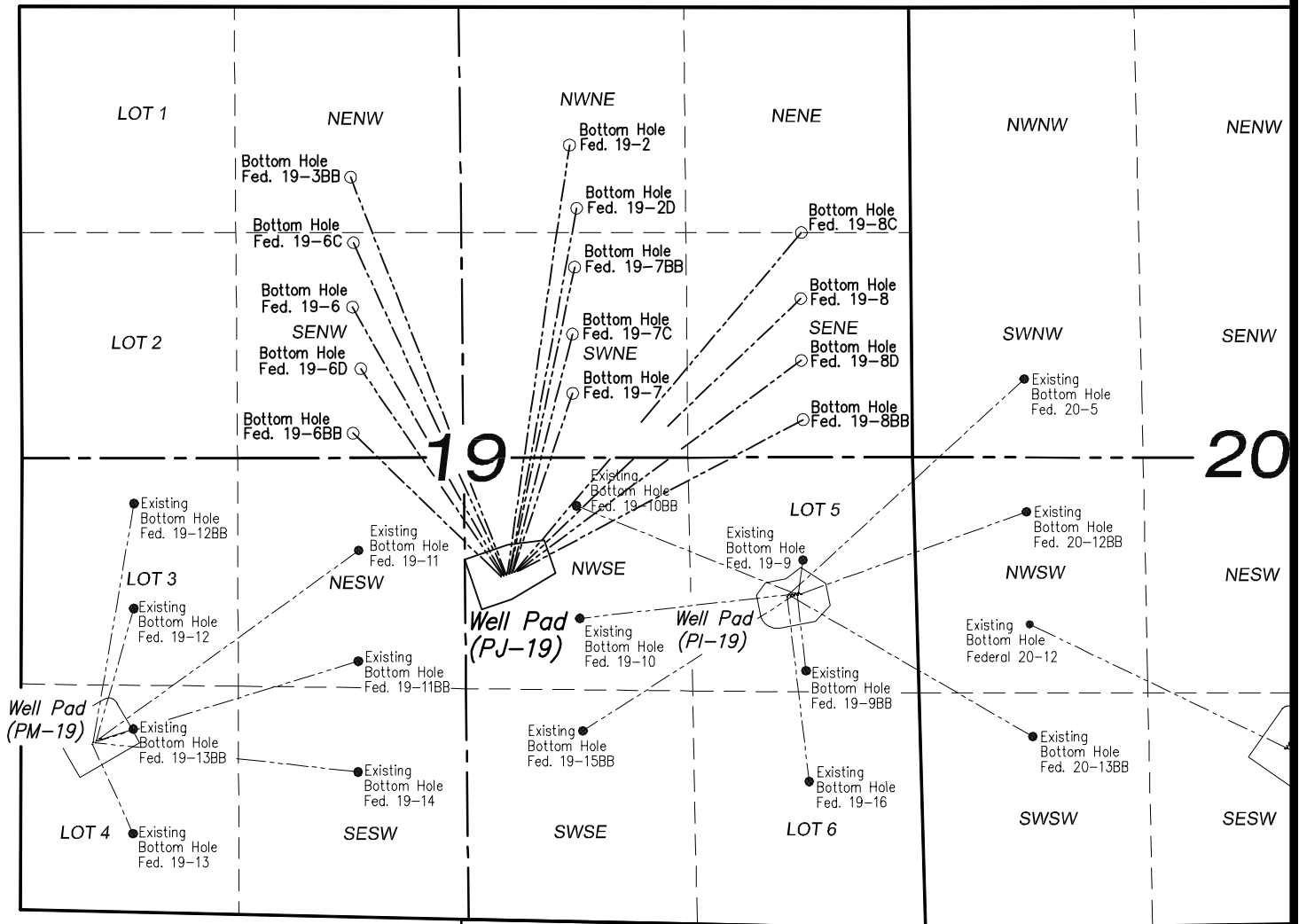
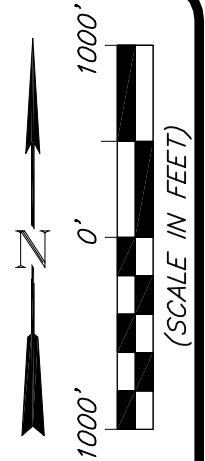


PJ-19 WELL PAD- REVISION SUMMARY

[illegible]

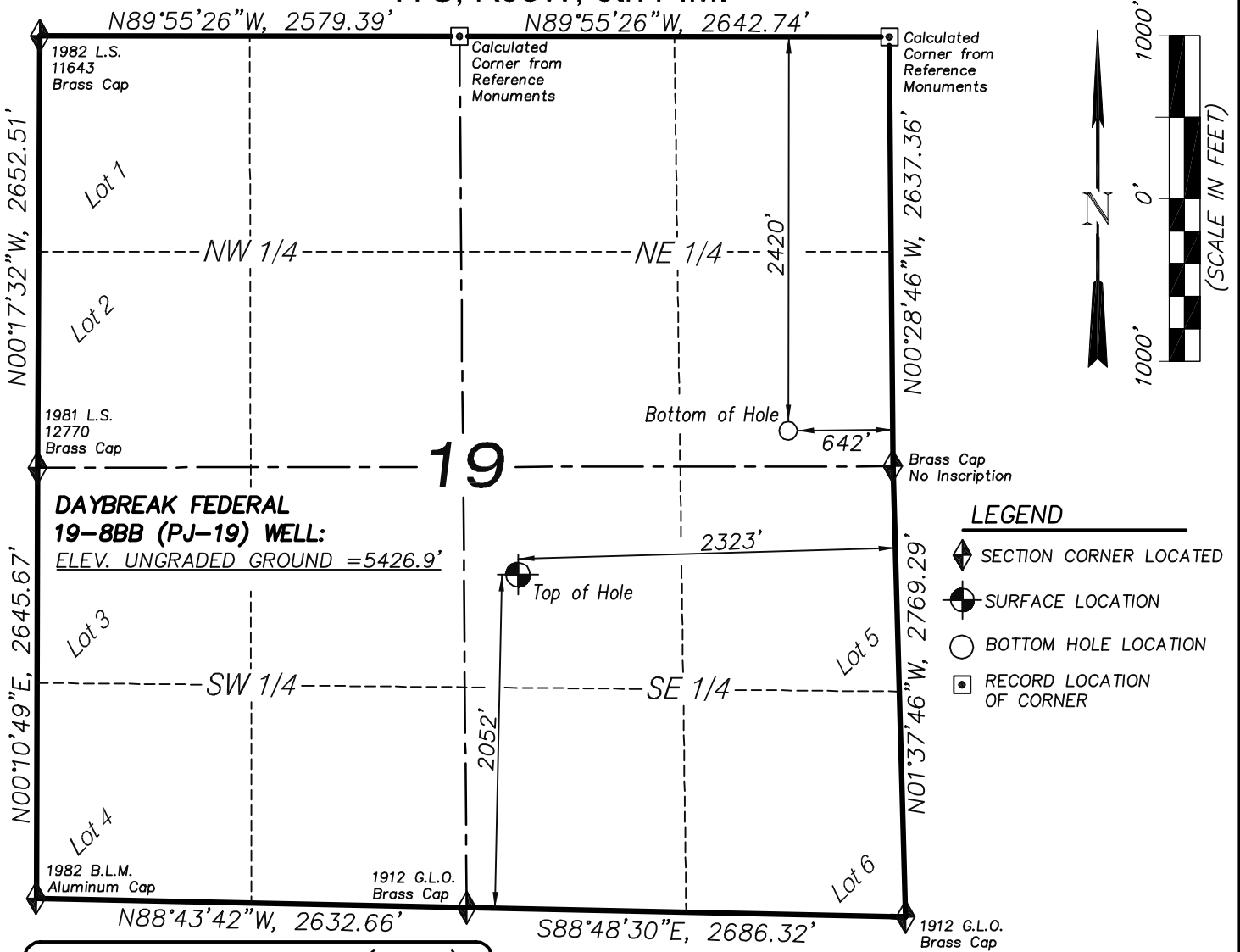
MULTI-WELL PLAN
EnCana Oil & Gas (USA) Inc.
Well Pad (PJ-19)
Section 19
T7S, R95W, 6th P.M.



906 Main Street
 Evanston, Wyoming 82930
 Phone No. (307) 789-4545

Multi-Well Plan		Scale: 1" = 1000'	SHEET 1 OF 10
Project No.	10-04-04	Date Surveyed: 1/26/10	
Date Drawn:	2/25/10	Latest Revision Date: 4/07/10	

T7S, R95W, 6th P.M.



**DAYBREAK FEDERAL
19-8BB (PJ-19) WELL:**
ELEV. UNGRADED GROUND = 5426.9'

LEGEND

- ◆ SECTION CORNER LOCATED
- SURFACE LOCATION
- BOTTOM HOLE LOCATION
- RECORD LOCATION OF CORNER

DAYBREAK FED. 19-8BB (PJ-19)
(WELLHEAD LOCATION) NAD 83
LATITUDE = 39.42134° N
LONGITUDE = 108.03836° W
(BOTTOM HOLE LOCATION) NAD 83
LATITUDE = 39.42378° N
LONGITUDE = 108.03249° W

NOTES

1. WELL FOOTAGES ARE MEASURED AT RIGHT ANGLES TO SECTION LINES.
2. BASIS OF BEARING: GEODETIC- BASED ON GPS OBSERVATIONS.
3. ELEVATIONS BASED ON GPS OBSERVATIONS, NAVD 88 (GEOID 03), POST PROCESSED USING NGS OPUS.
4. THE BOTTOM HOLE BEARS N61°59'24"E, 1882' FROM TOP OF HOLE.
5. SEE ADDENDUM TO LEGAL PLAT (SHEET 1p) FOR VISIBLE IMPROVEMENTS WITHIN 400 FEET OF THE PROPOSED OIL & GAS LOCATION.
6. CONTROL FOR SURVEY WAS ESTABLISHED USING DIFFERENTIALLY CORRECTED GPS FROM AN OPUS BASED CONTROL NETWORK. WELL LOCATION WAS ESTABLISHED USING NON-GPS CONVENTIONAL METHODS, THEREFORE NO PDOP READING WAS TAKEN.

MAP to ACCOMPANY

APPLICATION for PERMIT to DRILL

EnCana Oil & Gas (USA) Inc.

Daybreak Federal 19-8BB (PJ-19) Well

NW1/4 SE1/4, SECTION 19

T7S, R95W, 6th P.M.

GARFIELD COUNTY, COLORADO

CERTIFICATE OF SURVEYOR

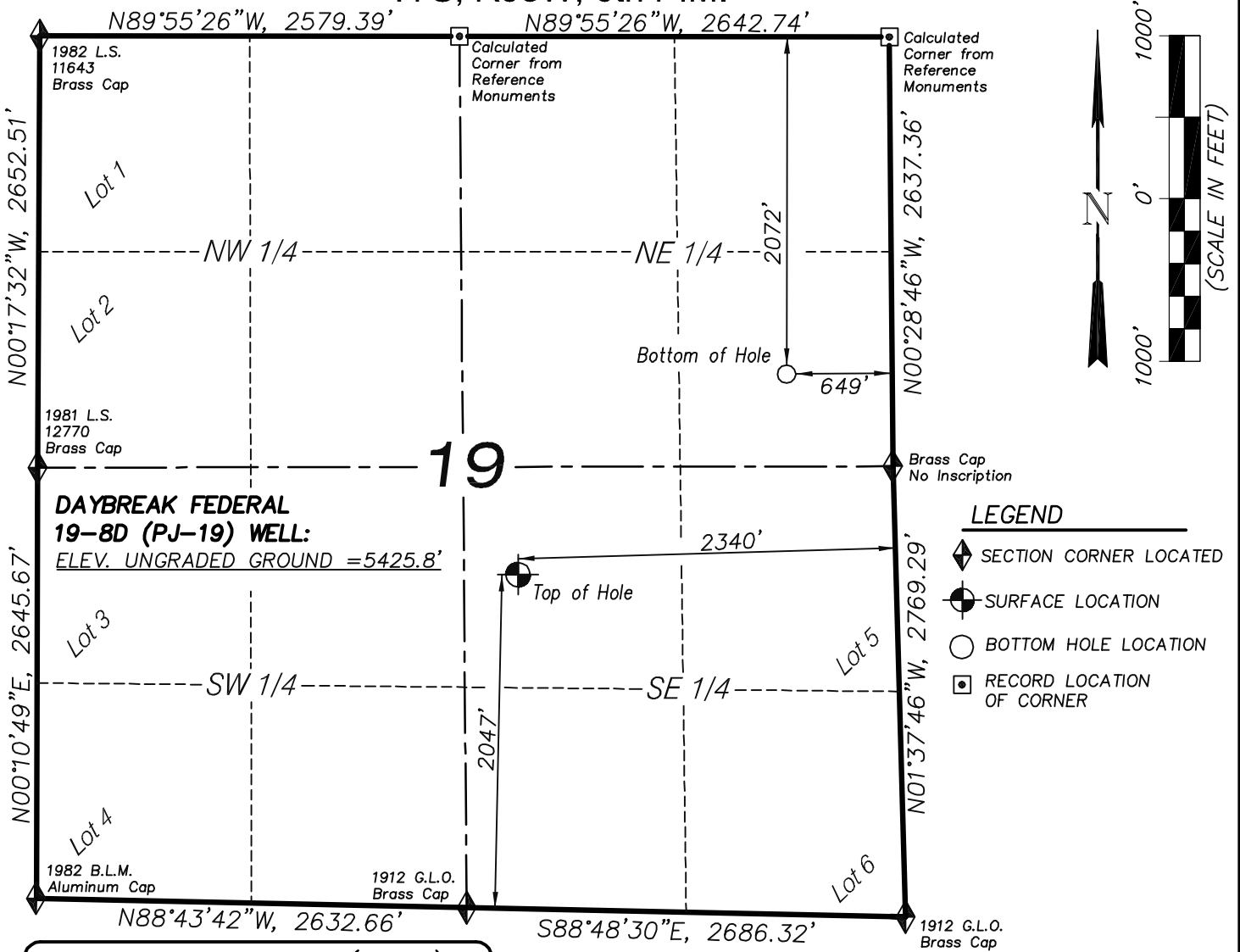
I, TED TAGGART OF FRUITA, COLORADO HEREBY CERTIFY THAT THIS MAP WAS MADE FROM NOTES TAKEN DURING AN ACTUAL SURVEY MADE BY ME OR UNDER MY DIRECTION FOR ENCANA OIL & GAS (USA) INC. AND THAT THIS LOCATION HAS BEEN STAKED ON THE GROUND AS SHOWN HEREON.



906 Main Street
Evanston, Wyoming 82930
Phone No. (307) 789-4545

Location Plat		Scale: 1" = 1000'	SHEET 1a OF 10
Project No.	10-04-04	Date Surveyed: 1/26/10	
Date Drawn: 2/25/10		Latest Revision Date: 4/07/10	

T7S, R95W, 6th P.M.



**DAYBREAK FEDERAL
19-8D (PJ-19) WELL:**
ELEV. UNGRADED GROUND = 5425.8'

LEGEND

- ◆ SECTION CORNER LOCATED
- SURFACE LOCATION
- BOTTOM HOLE LOCATION
- RECORD LOCATION OF CORNER

DAYBREAK FED. 19-8D (PJ-19)
(WELLHEAD LOCATION) NAD 83
LATITUDE = 39.42133° N
LONGITUDE = 108.03841° W
(BOTTOM HOLE LOCATION) NAD 83
LATITUDE = 39.42474° N
LONGITUDE = 108.03253° W

NOTES

1. WELL FOOTAGES ARE MEASURED AT RIGHT ANGLES TO SECTION LINES.
2. BASIS OF BEARING: GEODETIC- BASED ON GPS OBSERVATIONS.
3. ELEVATIONS BASED ON GPS OBSERVATIONS, NAVD 88 (GEOID 03), POST PROCESSED USING NGS OPUS.
4. THE BOTTOM HOLE BEARS N53°25'37"E, 2077' FROM TOP OF HOLE.
5. SEE ADDENDUM TO LEGAL PLAT (SHEET 1p) FOR VISIBLE IMPROVEMENTS WITHIN 400 FEET OF THE PROPOSED OIL & GAS LOCATION.
6. CONTROL FOR SURVEY WAS ESTABLISHED USING DIFFERENTIALLY CORRECTED GPS FROM AN OPUS BASED CONTROL NETWORK. WELL LOCATION WAS ESTABLISHED USING NON-GPS CONVENTIONAL METHODS, THEREFORE NO PDOP READING WAS TAKEN.

MAP to ACCOMPANY

APPLICATION for PERMIT to DRILL

EnCana Oil & Gas (USA) Inc.

Daybreak Federal 19-8D (PJ-19) Well

NW1/4 SE1/4, SECTION 19

T7S, R95W, 6th P.M.

GARFIELD COUNTY, COLORADO

CERTIFICATE OF SURVEYOR

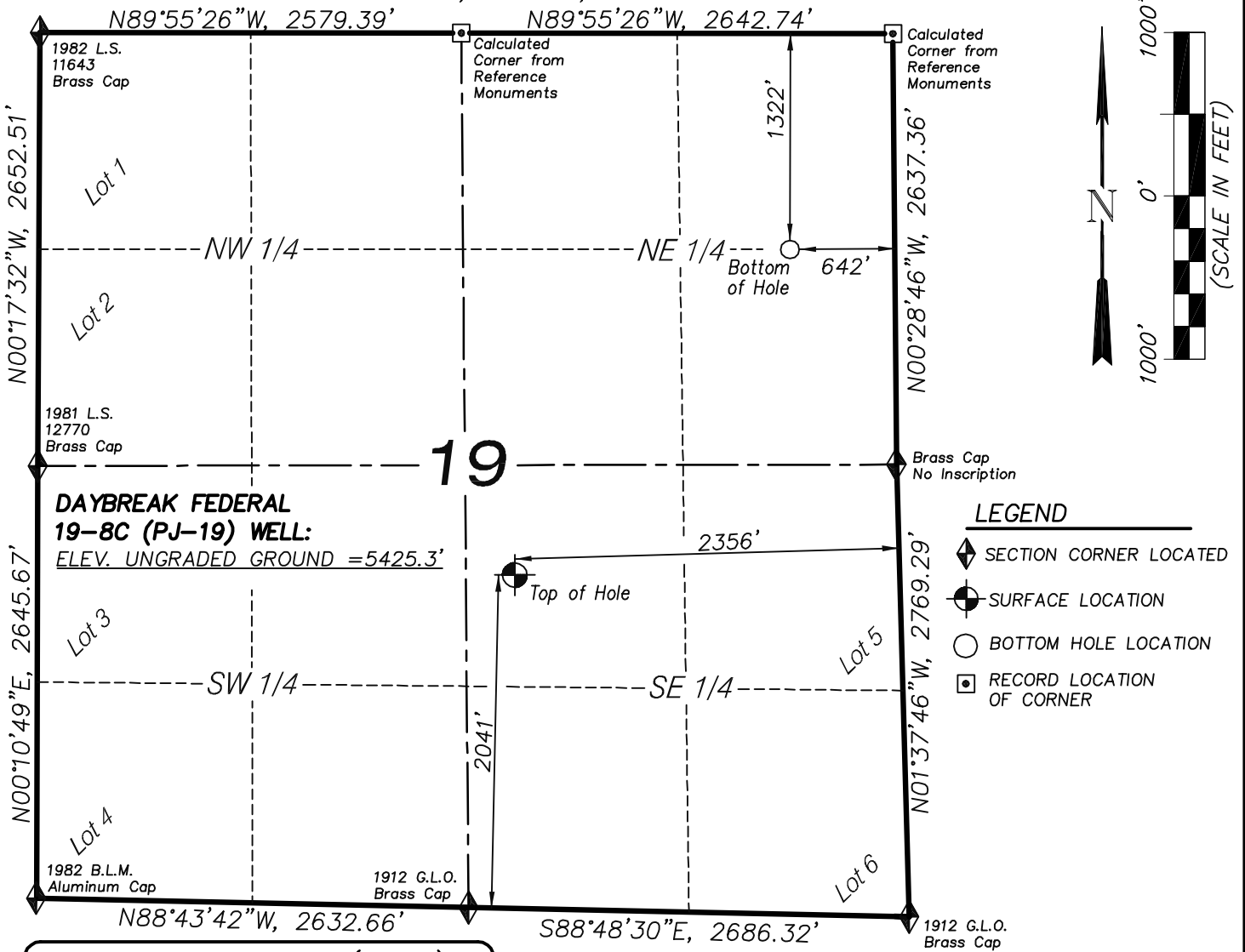
I, TED TAGGART OF FRUITA, COLORADO HEREBY CERTIFY THAT THIS MAP WAS MADE FROM NOTES TAKEN DURING AN ACTUAL SURVEY MADE BY ME OR UNDER MY DIRECTION FOR ENCANA OIL & GAS (USA) INC. AND THAT THIS LOCATION HAS BEEN STAKED ON THE GROUND AS SHOWN HEREON.



906 Main Street
Evanston, Wyoming 82930
Phone No. (307) 789-4545

Location Plat		Scale: 1" = 1000'	SHEET 1b OF 10
Project No.	10-04-04	Date Surveyed: 1/26/10	
Date Drawn: 2/25/10		Latest Revision Date: 4/07/10	

T7S, R95W, 6th P.M.



**DAYBREAK FEDERAL
19-8C (PJ-19) WELL:**
ELEV. UNGRADED GROUND = 5425.3'

LEGEND

- ◆ SECTION CORNER LOCATED
- SURFACE LOCATION
- BOTTOM HOLE LOCATION
- RECORD LOCATION OF CORNER

DAYBREAK FED. 19-8C (PJ-19)
(WELLHEAD LOCATION) NAD 83
LATITUDE = 39.42131° N
LONGITUDE = 108.03847° W
(BOTTOM HOLE LOCATION) NAD 83
LATITUDE = 39.42680° N
LONGITUDE = 108.03253° W

NOTES

1. WELL FOOTAGES ARE MEASURED AT RIGHT ANGLES TO SECTION LINES.
2. BASIS OF BEARING: GEODETIC- BASED ON GPS OBSERVATIONS.
3. ELEVATIONS BASED ON GPS OBSERVATIONS, NAVD 88 (GEOID 03), POST PROCESSED USING NGS OPUS.
4. THE BOTTOM HOLE BEARS N40°12'27"E, 2609' FROM TOP OF HOLE.
5. SEE ADDENDUM TO LEGAL PLAT (SHEET 1p) FOR VISIBLE IMPROVEMENTS WITHIN 400 FEET OF THE PROPOSED OIL & GAS LOCATION.
6. CONTROL FOR SURVEY WAS ESTABLISHED USING DIFFERENTIALLY CORRECTED GPS FROM AN OPUS BASED CONTROL NETWORK. WELL LOCATION WAS ESTABLISHED USING NON-GPS CONVENTIONAL METHODS, THEREFORE NO PDOP READING WAS TAKEN.

MAP to ACCOMPANY

APPLICATION for PERMIT to DRILL

EnCana Oil & Gas (USA) Inc.

Daybreak Federal 19-8C (PJ-19) Well

NW1/4 SE1/4, SECTION 19

T7S, R95W, 6th P.M.

GARFIELD COUNTY, COLORADO

CERTIFICATE OF SURVEYOR

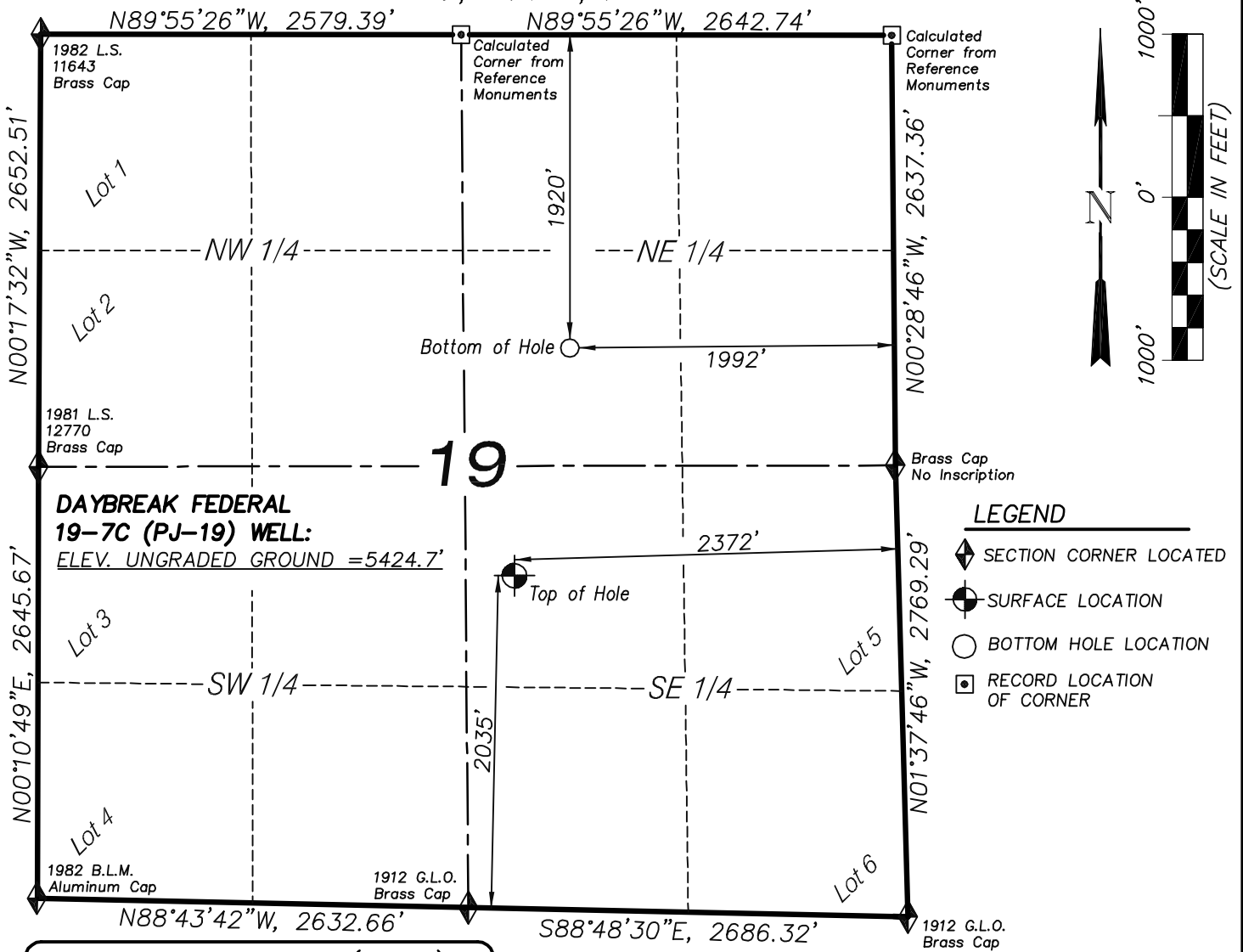
I, TED TAGGART OF FRUITA, COLORADO HEREBY CERTIFY THAT THIS MAP WAS MADE FROM NOTES TAKEN DURING AN ACTUAL SURVEY MADE BY ME OR UNDER MY DIRECTION FOR ENCANA OIL & GAS (USA) INC. AND THAT THIS LOCATION HAS BEEN STAKED ON THE GROUND AS SHOWN HEREON.



906 Main Street
Evanston, Wyoming 82930
Phone No. (307) 789-4545

Location Plat		Scale: 1" = 1000'	SHEET 1c OF 10
Project No.	10-04-04	Date Surveyed: 1/26/10	
Date Drawn:	2/25/10	Latest Revision Date: 4/07/10	

T7S, R95W, 6th P.M.



**DAYBREAK FEDERAL
19-7C (PJ-19) WELL:**
ELEV. UNGRADED GROUND = 5424.7'

LEGEND

- ◆ SECTION CORNER LOCATED
- ⊙ SURFACE LOCATION
- BOTTOM HOLE LOCATION
- RECORD LOCATION OF CORNER

DAYBREAK FED. 19-7C (PJ-19)
(WELLHEAD LOCATION) NAD 83
LATITUDE = 39.42130° N
LONGITUDE = 108.03853° W
(BOTTOM HOLE LOCATION) NAD 83
LATITUDE = 39.42515° N
LONGITUDE = 108.03729° W

NOTES

1. WELL FOOTAGES ARE MEASURED AT RIGHT ANGLES TO SECTION LINES.
2. BASIS OF BEARING: GEODETIC- BASED ON GPS OBSERVATIONS.
3. ELEVATIONS BASED ON GPS OBSERVATIONS, NAVD 88 (GEOID 03), POST PROCESSED USING NGS OPUS.
4. THE BOTTOM HOLE BEARS N14°13'49"E, 1447' FROM TOP OF HOLE.
5. SEE ADDENDUM TO LEGAL PLAT (SHEET 1p) FOR VISIBLE IMPROVEMENTS WITHIN 400 FEET OF THE PROPOSED OIL & GAS LOCATION.
6. CONTROL FOR SURVEY WAS ESTABLISHED USING DIFFERENTIALLY CORRECTED GPS FROM AN OPUS BASED CONTROL NETWORK. WELL LOCATION WAS ESTABLISHED USING NON-GPS CONVENTIONAL METHODS, THEREFORE NO PDOP READING WAS TAKEN.

MAP to ACCOMPANY

APPLICATION for PERMIT to DRILL

EnCana Oil & Gas (USA) Inc.

Daybreak Federal 19-7C (PJ-19) Well

NW1/4 SE1/4, SECTION 19

T7S, R95W, 6th P.M.

GARFIELD COUNTY, COLORADO

CERTIFICATE OF SURVEYOR

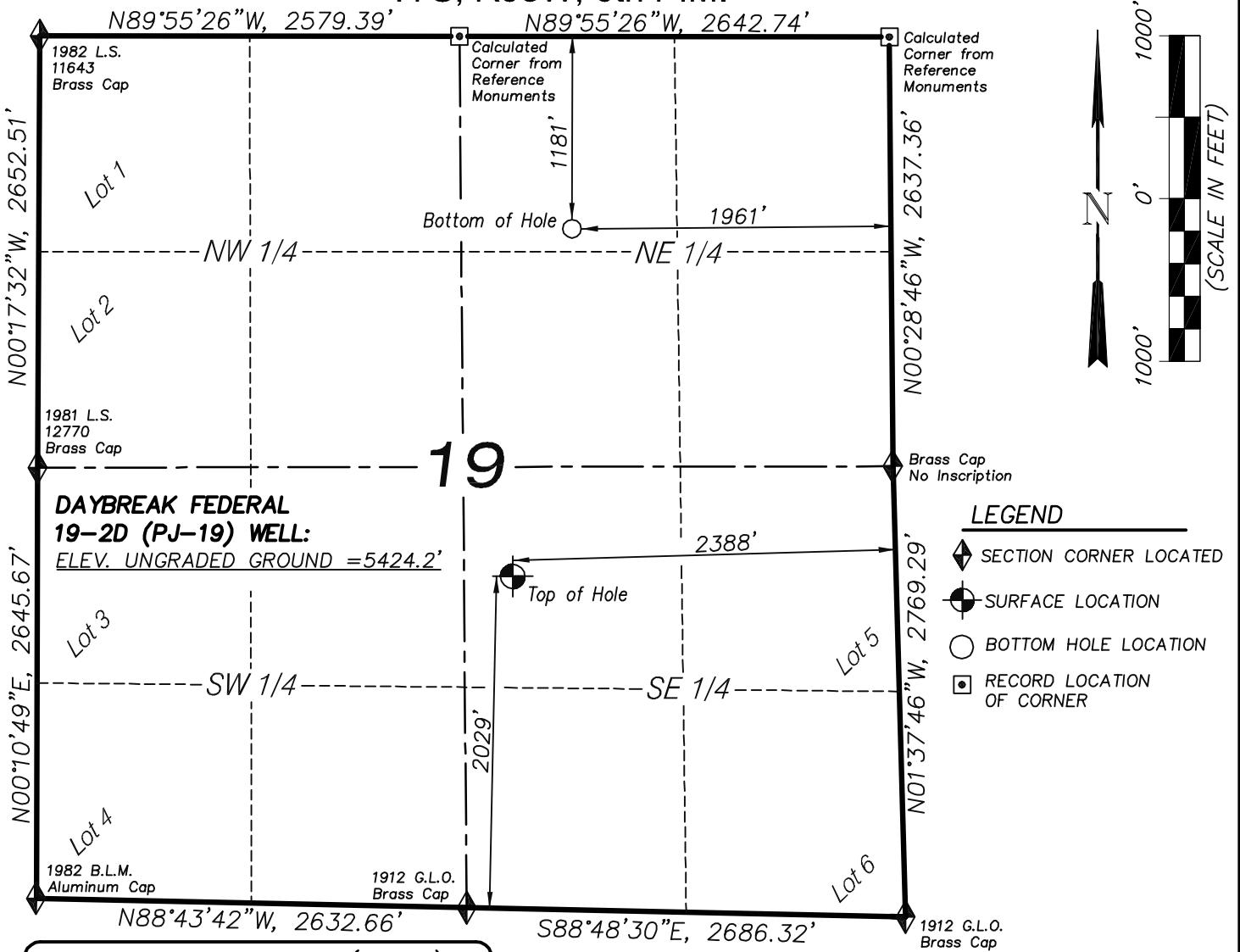
I, TED TAGGART OF FRUITA, COLORADO HEREBY CERTIFY THAT THIS MAP WAS MADE FROM NOTES TAKEN DURING AN ACTUAL SURVEY MADE BY ME OR UNDER MY DIRECTION FOR ENCANA OIL & GAS (USA) INC. AND THAT THIS LOCATION HAS BEEN STAKED ON THE GROUND AS SHOWN HEREON.



906 Main Street
Evanston, Wyoming 82930
Phone No. (307) 789-4545

Location Plat		Scale: 1" = 1000'	SHEET 1d OF 10
Project No.	10-04-04	Date Surveyed: 1/26/10	
Date Drawn: 2/25/10	Latest Revision Date: 4/07/10		

T7S, R95W, 6th P.M.



**DAYBREAK FEDERAL
19-2D (PJ-19) WELL:**
ELEV. UNGRADED GROUND = 5424.2'

LEGEND

- ◆ SECTION CORNER LOCATED
- ⊕ SURFACE LOCATION
- BOTTOM HOLE LOCATION
- RECORD LOCATION OF CORNER

DAYBREAK FED. 19-2D (PJ-19)
(WELLHEAD LOCATION) NAD 83
LATITUDE = 39.42128° N
LONGITUDE = 108.03858° W
(BOTTOM HOLE LOCATION) NAD 83
LATITUDE = 39.42718° N
LONGITUDE = 108.03721° W

NOTES

1. WELL FOOTAGES ARE MEASURED AT RIGHT ANGLES TO SECTION LINES.
2. BASIS OF BEARING: GEODETIC- BASED ON GPS OBSERVATIONS.
3. ELEVATIONS BASED ON GPS OBSERVATIONS, NAVD 88 (GEOID 03), POST PROCESSED USING NGS OPUS.
4. THE BOTTOM HOLE BEARS N10°27'53"E, 2183' FROM TOP OF HOLE.
5. SEE ADDENDUM TO LEGAL PLAT (SHEET 1p) FOR VISIBLE IMPROVEMENTS WITHIN 400 FEET OF THE PROPOSED OIL & GAS LOCATION.
6. CONTROL FOR SURVEY WAS ESTABLISHED USING DIFFERENTIALLY CORRECTED GPS FROM AN OPUS BASED CONTROL NETWORK. WELL LOCATION WAS ESTABLISHED USING NON-GPS CONVENTIONAL METHODS, THEREFORE NO PDOP READING WAS TAKEN.

MAP to ACCOMPANY

APPLICATION for PERMIT to DRILL

EnCana Oil & Gas (USA) Inc.

Daybreak Federal 19-2D (PJ-19) Well

NW1/4 SE1/4, SECTION 19

T7S, R95W, 6th P.M.

GARFIELD COUNTY, COLORADO

CERTIFICATE OF SURVEYOR

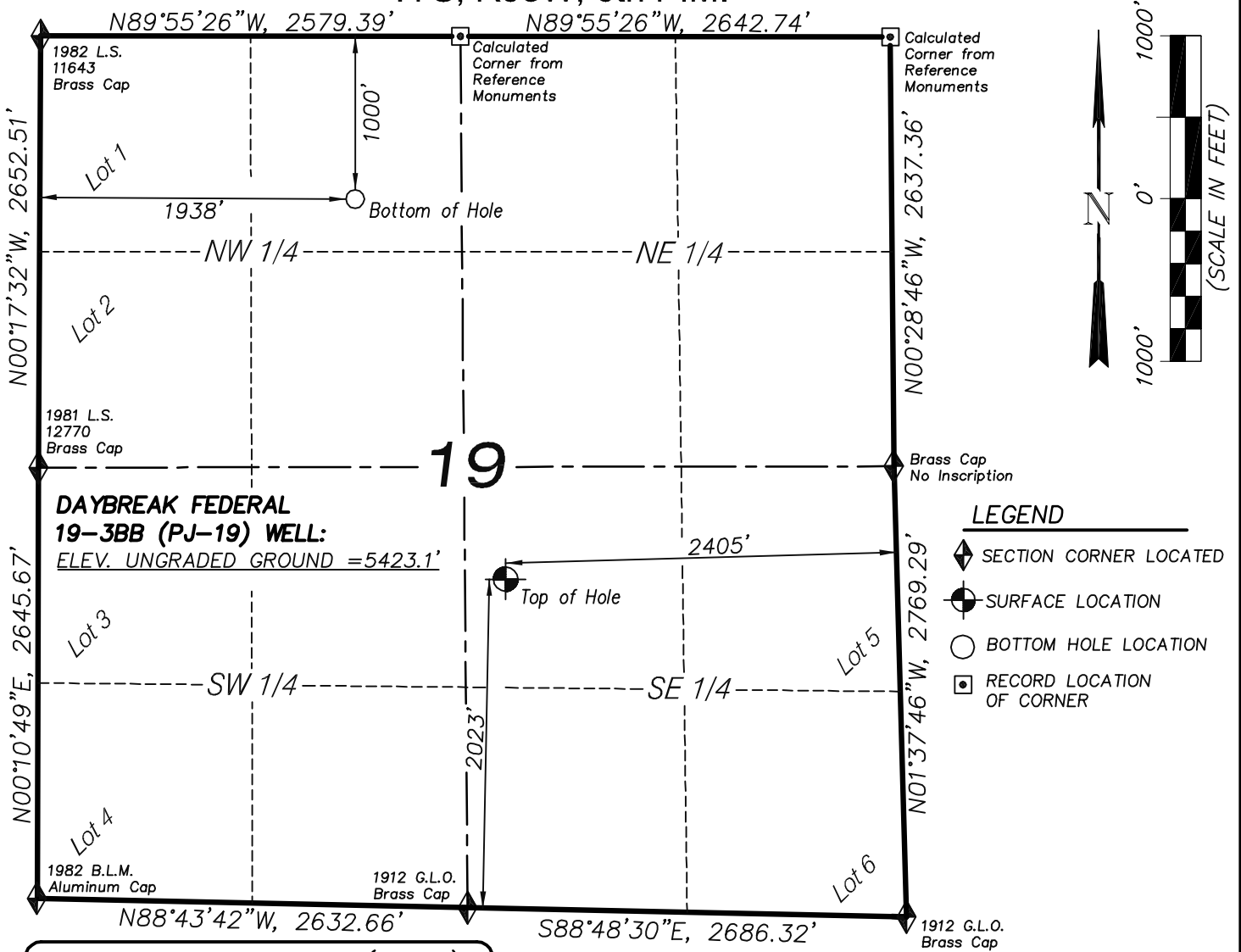
I, TED TAGGART OF FRUITA, COLORADO HEREBY CERTIFY THAT THIS MAP WAS MADE FROM NOTES TAKEN DURING AN ACTUAL SURVEY MADE BY ME OR UNDER MY DIRECTION FOR ENCANA OIL & GAS (USA) INC. AND THAT THIS LOCATION HAS BEEN STAKED ON THE GROUND AS SHOWN HEREON.



906 Main Street
Evanston, Wyoming 82930
Phone No. (307) 789-4545

Location Plat		Scale: 1" = 1000'	SHEET 1e OF 10
Project No.	10-04-04	Date Surveyed: 1/26/10	
Date Drawn: 2/25/10		Latest Revision Date: 4/07/10	

T7S, R95W, 6th P.M.



**DAYBREAK FEDERAL
19-3BB (PJ-19) WELL:**
ELEV. UNGRADED GROUND = 5423.1'

LEGEND

- ◆ SECTION CORNER LOCATED
- SURFACE LOCATION
- BOTTOM HOLE LOCATION
- RECORD LOCATION OF CORNER

DAYBREAK FED. 19-3BB (PJ-19)
(WELLHEAD LOCATION) NAD 83
LATITUDE = 39.42127° N
LONGITUDE = 108.03864° W
(BOTTOM HOLE LOCATION) NAD 83
LATITUDE = 39.42766° N
LONGITUDE = 108.04191° W

NOTES

1. WELL FOOTAGES ARE MEASURED AT RIGHT ANGLES TO SECTION LINES.
2. BASIS OF BEARING: GEODETIC- BASED ON GPS OBSERVATIONS.
3. ELEVATIONS BASED ON GPS OBSERVATIONS, NAVD 88 (GEOID 03), POST PROCESSED USING NGS OPUS.
4. THE BOTTOM HOLE BEARS N21°24'12"W, 2508' FROM TOP OF HOLE.
5. SEE ADDENDUM TO LEGAL PLAT (SHEET 1p) FOR VISIBLE IMPROVEMENTS WITHIN 400 FEET OF THE PROPOSED OIL & GAS LOCATION.
6. CONTROL FOR SURVEY WAS ESTABLISHED USING DIFFERENTIALLY CORRECTED GPS FROM AN OPUS BASED CONTROL NETWORK. WELL LOCATION WAS ESTABLISHED USING NON-GPS CONVENTIONAL METHODS, THEREFORE NO PDOP READING WAS TAKEN.

MAP to ACCOMPANY

APPLICATION for PERMIT to DRILL

EnCana Oil & Gas (USA) Inc.

Daybreak Federal 19-3BB (PJ-19) Well

NW1/4 SE1/4, SECTION 19

T7S, R95W, 6th P.M.

GARFIELD COUNTY, COLORADO

CERTIFICATE OF SURVEYOR

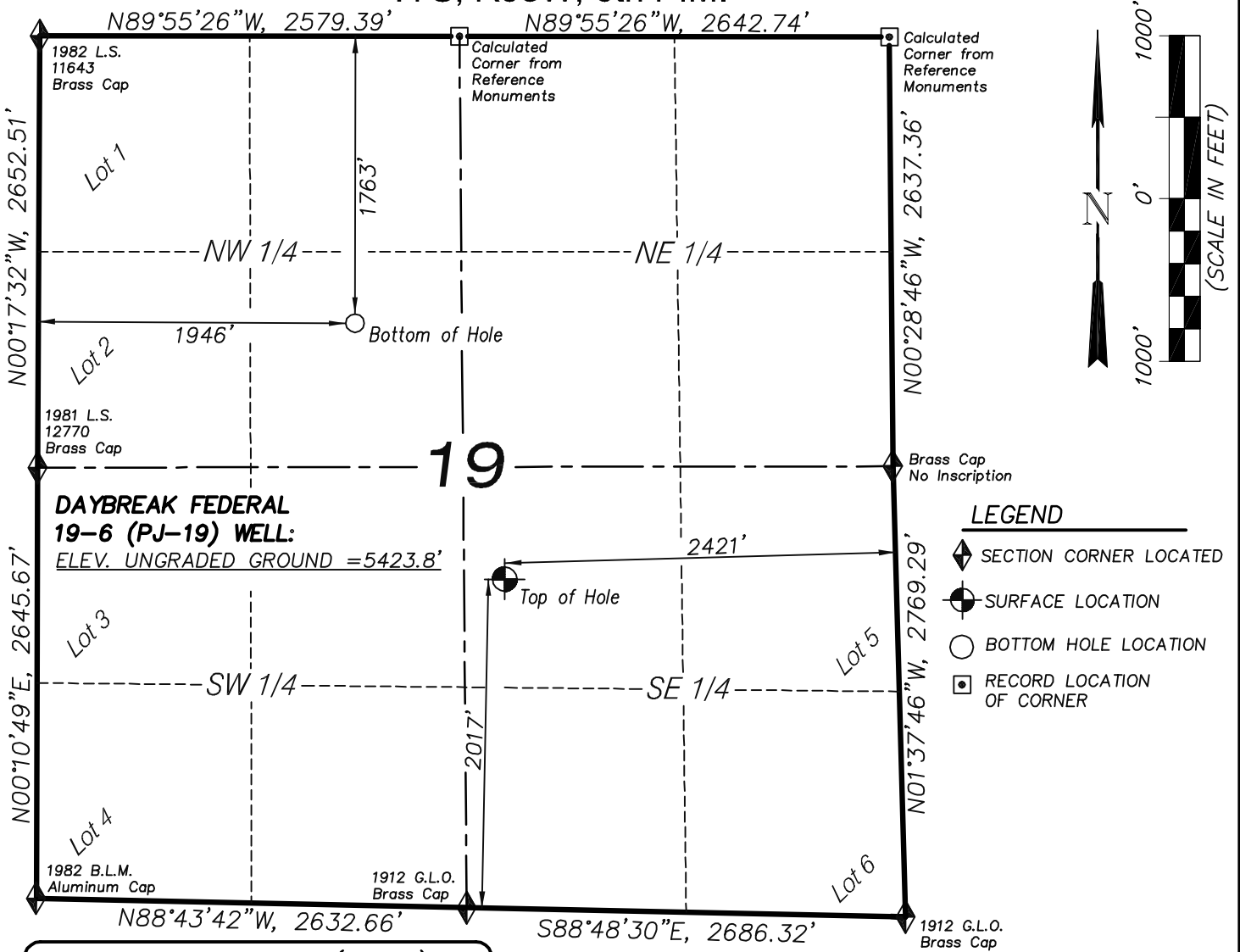
I, TED TAGGART OF FRUITA, COLORADO HEREBY CERTIFY THAT THIS MAP WAS MADE FROM NOTES TAKEN DURING AN ACTUAL SURVEY MADE BY ME OR UNDER MY DIRECTION FOR ENCANA OIL & GAS (USA) INC. AND THAT THIS LOCATION HAS BEEN STAKED ON THE GROUND AS SHOWN HEREON.



906 Main Street
Evanston, Wyoming 82930
Phone No. (307) 789-4545

Location Plat		Scale: 1" = 1000'	SHEET 1f OF 10
Project No.	10-04-04	Date Surveyed: 1/26/10	
Date Drawn: 2/25/10		Latest Revision Date: 4/07/10	

T7S, R95W, 6th P.M.



DAYBREAK FED. 19-6 (PJ-19)
 (WELLHEAD LOCATION) NAD 83
 LATITUDE = 39.42125° N
 LONGITUDE = 108.03870° W
 (BOTTOM HOLE LOCATION) NAD 83
 LATITUDE = 39.42557° N
 LONGITUDE = 108.04186° W

CERTIFICATE OF SURVEYOR

I, TED TAGGART OF FRUITA, COLORADO HEREBY CERTIFY THAT THIS MAP WAS MADE FROM NOTES TAKEN DURING AN ACTUAL SURVEY MADE BY ME OR UNDER MY DIRECTION FOR ENCANA OIL & GAS (USA) INC. AND THAT THIS LOCATION HAS BEEN STAKED ON THE GROUND AS SHOWN HEREON.



NOTES

1. WELL FOOTAGES ARE MEASURED AT RIGHT ANGLES TO SECTION LINES.
2. BASIS OF BEARING: GEODETIC- BASED ON GPS OBSERVATIONS.
3. ELEVATIONS BASED ON GPS OBSERVATIONS, NAVD 88 (GEOID 03), POST PROCESSED USING NGS OPUS.
4. THE BOTTOM HOLE BEARS N29°21'21"W, 1810' FROM TOP OF HOLE.
5. SEE ADDENDUM TO LEGAL PLAT (SHEET 1p) FOR VISIBLE IMPROVEMENTS WITHIN 400 FEET OF THE PROPOSED OIL & GAS LOCATION.
6. CONTROL FOR SURVEY WAS ESTABLISHED USING DIFFERENTIALLY CORRECTED GPS FROM AN OPUS BASED CONTROL NETWORK. WELL LOCATION WAS ESTABLISHED USING NON-GPS CONVENTIONAL METHODS, THEREFORE NO PDOP READING WAS TAKEN.

MAP to ACCOMPANY

APPLICATION for PERMIT to DRILL
EnCana Oil & Gas (USA) Inc.
Daybreak Federal 19-6 (PJ-19) Well

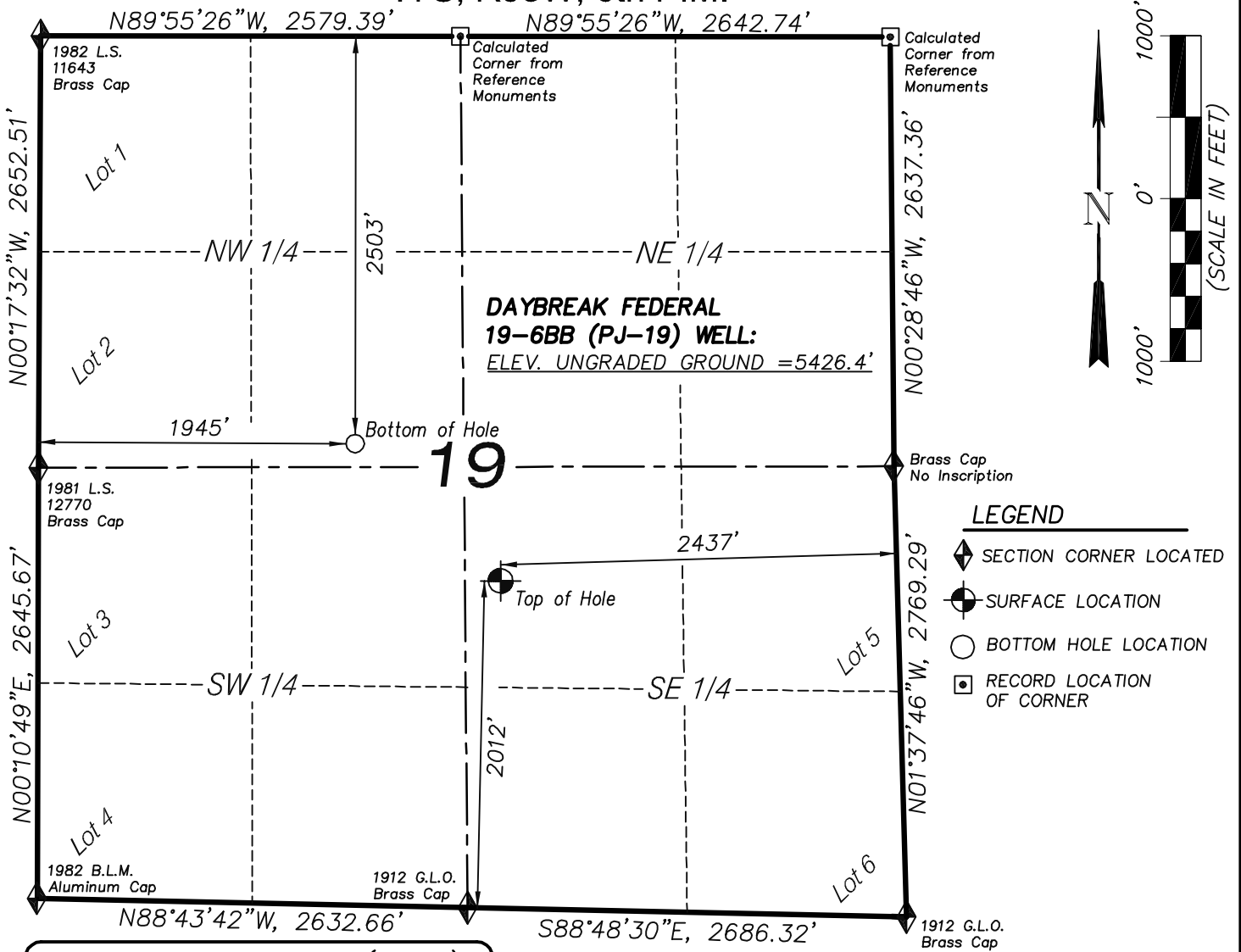
NW1/4 SE1/4, SECTION 19
 T7S, R95W, 6th P.M.
 GARFIELD COUNTY, COLORADO

Location Plat		Scale: 1" = 1000'	SHEET 1g OF 10
Project No.	10-04-04	Date Surveyed: 1/26/10	
Date Drawn:	2/25/10	Latest Revision Date: 4/07/10	



906 Main Street
 Evanston, Wyoming 82930
 Phone No. (307) 789-4545

T7S, R95W, 6th P.M.



DAYBREAK FED. 19-6BB (PJ-19)
 (WELLHEAD LOCATION) NAD 83
 LATITUDE = 39.42124° N
 LONGITUDE = 108.03875° W
 (BOTTOM HOLE LOCATION) NAD 83
 LATITUDE = 39.42354° N
 LONGITUDE = 108.04184° W

CERTIFICATE OF SURVEYOR

I, TED TAGGART OF FRUITA, COLORADO HEREBY CERTIFY THAT THIS MAP WAS MADE FROM NOTES TAKEN DURING AN ACTUAL SURVEY MADE BY ME OR UNDER MY DIRECTION FOR ENCANA OIL & GAS (USA) INC. AND THAT THIS LOCATION HAS BEEN STAKED ON THE GROUND AS SHOWN HEREON.



NOTES

1. WELL FOOTAGES ARE MEASURED AT RIGHT ANGLES TO SECTION LINES.
2. BASIS OF BEARING: GEODETIC- BASED ON GPS OBSERVATIONS.
3. ELEVATIONS BASED ON GPS OBSERVATIONS, NAVD 88 (GEOID 03), POST PROCESSED USING NGS OPUS.
4. THE BOTTOM HOLE BEARS N45°51'08"W, 1210' FROM TOP OF HOLE.
5. SEE ADDENDUM TO LEGAL PLAT (SHEET 1p) FOR VISIBLE IMPROVEMENTS WITHIN 400 FEET OF THE PROPOSED OIL & GAS LOCATION.
6. CONTROL FOR SURVEY WAS ESTABLISHED USING DIFFERENTIALLY CORRECTED GPS FROM AN OPUS BASED CONTROL NETWORK. WELL LOCATION WAS ESTABLISHED USING NON-GPS CONVENTIONAL METHODS, THEREFORE NO PDOP READING WAS TAKEN.

MAP to ACCOMPANY

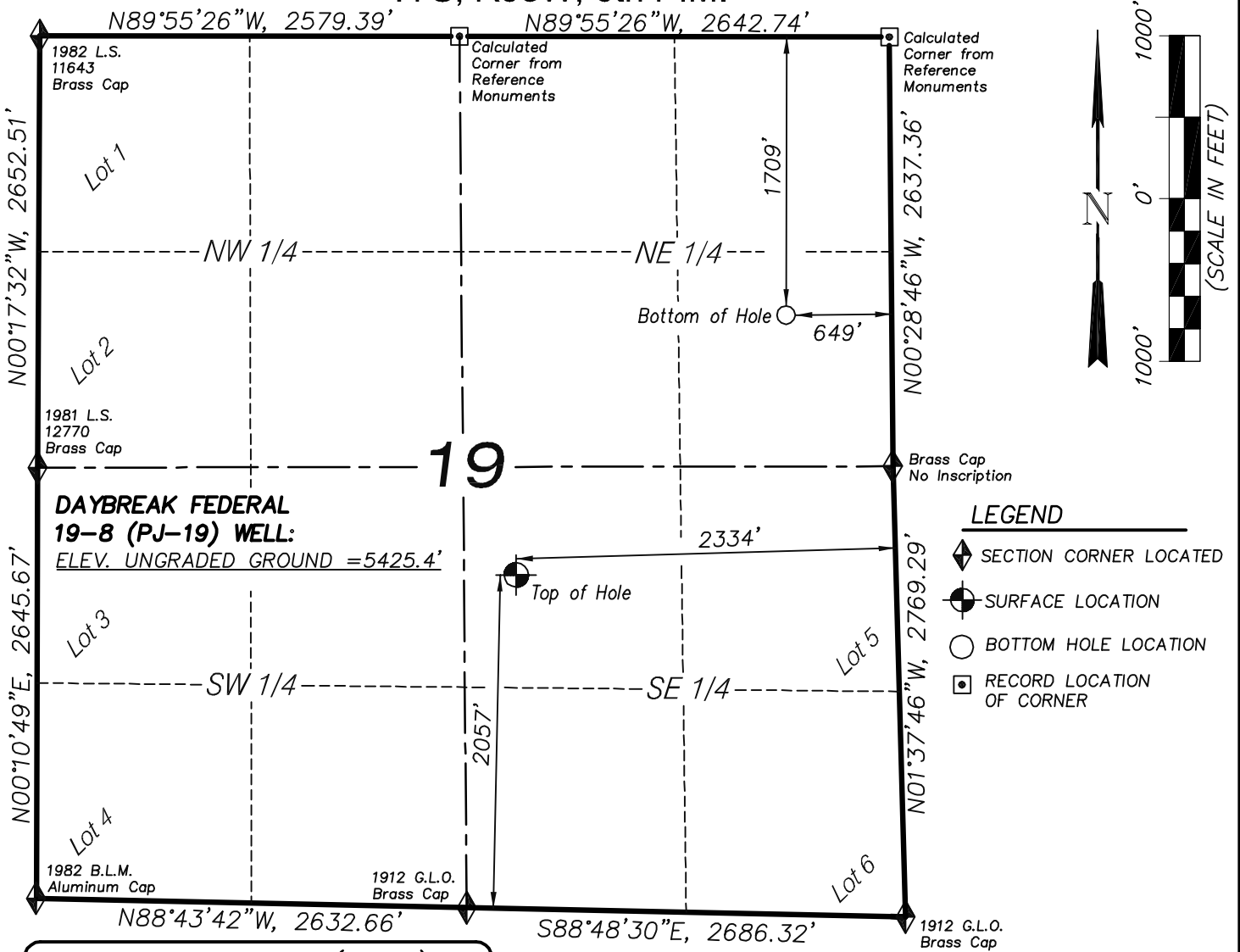
APPLICATION for PERMIT to DRILL
EnCana Oil & Gas (USA) Inc.
Daybreak Federal 19-6BB (PJ-19) Well
 NW1/4 SE1/4, SECTION 19
 T7S, R95W, 6th P.M.
 GARFIELD COUNTY, COLORADO

Location Plat		Scale: 1" = 1000'	SHEET 1h OF 10
Project No.	10-04-04	Date Surveyed: 1/26/10	
Date Drawn: 2/25/10	Latest Revision Date: 4/07/10		



906 Main Street
 Evanston, Wyoming 82930
 Phone No. (307) 789-4545

T7S, R95W, 6th P.M.



**DAYBREAK FEDERAL
19-8 (PJ-19) WELL:**
ELEV. UNGRADED GROUND = 5425.4'

DAYBREAK FED. 19-8 (PJ-19)
(WELLHEAD LOCATION) NAD 83
LATITUDE = 39.42136° N
LONGITUDE = 108.03839° W
(BOTTOM HOLE LOCATION) NAD 83
LATITUDE = 39.42574° N
LONGITUDE = 108.03254° W

CERTIFICATE OF SURVEYOR

I, TED TAGGART OF FRUITA, COLORADO HEREBY CERTIFY THAT THIS MAP WAS MADE FROM NOTES TAKEN DURING AN ACTUAL SURVEY MADE BY ME OR UNDER MY DIRECTION FOR ENCANA OIL & GAS (USA) INC. AND THAT THIS LOCATION HAS BEEN STAKED ON THE GROUND AS SHOWN HEREON.



NOTES

1. WELL FOOTAGES ARE MEASURED AT RIGHT ANGLES TO SECTION LINES.
2. BASIS OF BEARING: GEODETIC- BASED ON GPS OBSERVATIONS.
3. ELEVATIONS BASED ON GPS OBSERVATIONS, NAVD 88 (GEOID 03), POST PROCESSED USING NGS OPUS.
4. THE BOTTOM HOLE BEARS N46°13'13"E, 2298' FROM TOP OF HOLE.
5. SEE ADDENDUM TO LEGAL PLAT (SHEET 1p) FOR VISIBLE IMPROVEMENTS WITHIN 400 FEET OF THE PROPOSED OIL & GAS LOCATION.
6. CONTROL FOR SURVEY WAS ESTABLISHED USING DIFFERENTIALLY CORRECTED GPS FROM AN OPUS BASED CONTROL NETWORK. WELL LOCATION WAS ESTABLISHED USING NON-GPS CONVENTIONAL METHODS, THEREFORE NO PDOP READING WAS TAKEN.

MAP to ACCOMPANY

APPLICATION for PERMIT to DRILL
EnCana Oil & Gas (USA) Inc.
Daybreak Federal 19-8 (PJ-19) Well

NW1/4 SE1/4, SECTION 19

T7S, R95W, 6th P.M.

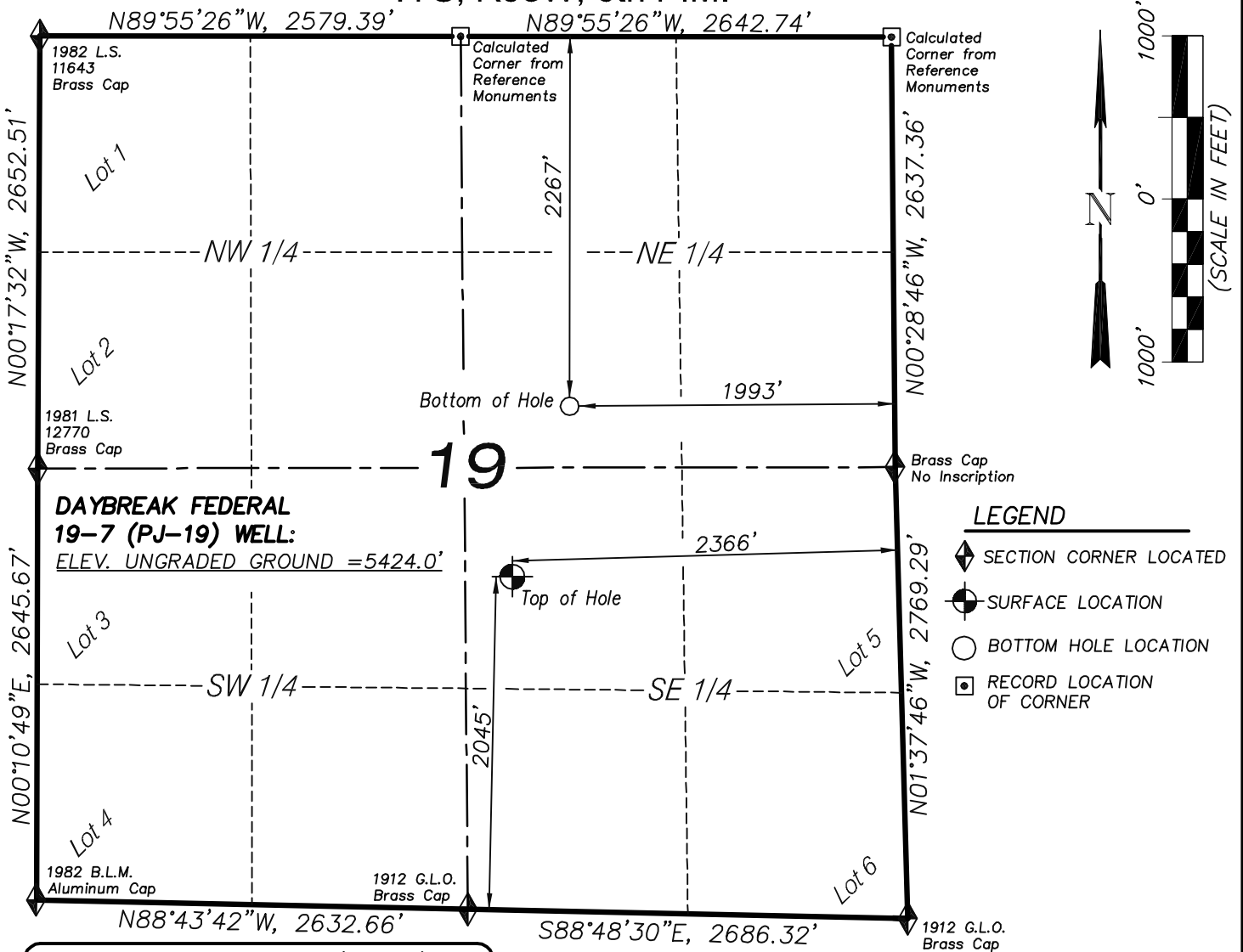
GARFIELD COUNTY, COLORADO

Location Plat		Scale: 1" = 1000'	SHEET 1i OF 10
Project No.	10-04-04	Date Surveyed: 1/26/10	
Date Drawn:	2/25/10	Latest Revision Date: 4/07/10	



906 Main Street
Evanston, Wyoming 82930
Phone No. (307) 789-4545

T7S, R95W, 6th P.M.



DAYBREAK FED. 19-7 (PJ-19)
 (WELLHEAD LOCATION) NAD 83
 LATITUDE = 39.42132° N
 LONGITUDE = 108.03851° W
 (BOTTOM HOLE LOCATION) NAD 83
 LATITUDE = 39.42420° N
 LONGITUDE = 108.03727° W

CERTIFICATE OF SURVEYOR

I, TED TAGGART OF FRUITA, COLORADO HEREBY CERTIFY THAT THIS MAP WAS MADE FROM NOTES TAKEN DURING AN ACTUAL SURVEY MADE BY ME OR UNDER MY DIRECTION FOR ENCANA OIL & GAS (USA) INC. AND THAT THIS LOCATION HAS BEEN STAKED ON THE GROUND AS SHOWN HEREON.



NOTES

1. WELL FOOTAGES ARE MEASURED AT RIGHT ANGLES TO SECTION LINES.
2. BASIS OF BEARING: GEODETIC- BASED ON GPS OBSERVATIONS.
3. ELEVATIONS BASED ON GPS OBSERVATIONS, NAVD 88 (GEOID 03), POST PROCESSED USING NGS OPUS.
4. THE BOTTOM HOLE BEARS N18°37'14"E, 1103' FROM TOP OF HOLE.
5. SEE ADDENDUM TO LEGAL PLAT (SHEET 1p) FOR VISIBLE IMPROVEMENTS WITHIN 400 FEET OF THE PROPOSED OIL & GAS LOCATION.
6. CONTROL FOR SURVEY WAS ESTABLISHED USING DIFFERENTIALLY CORRECTED GPS FROM AN OPUS BASED CONTROL NETWORK. WELL LOCATION WAS ESTABLISHED USING NON-GPS CONVENTIONAL METHODS, THEREFORE NO PDOP READING WAS TAKEN.

MAP to ACCOMPANY

APPLICATION for PERMIT to DRILL
EnCana Oil & Gas (USA) Inc.
Daybreak Federal 19-7 (PJ-19) Well

NW1/4 SE1/4, SECTION 19

T7S, R95W, 6th P.M.

GARFIELD COUNTY, COLORADO

Location Plat		Scale: 1" = 1000'	SHEET 1j OF 10
Project No.	10-04-04	Date Surveyed: 1/26/10	
Date Drawn:	2/25/10	Latest Revision Date: 4/07/10	



906 Main Street
 Evanston, Wyoming 82930
 Phone No. (307) 789-4545

19

**DAYBREAK FEDERAL
19-7BB (PJ-19) WELL:**
ELEV. UNGRADED GROUND = 5423.5'

Lot 1
1982 L.S.
11643
Brass Cap

Lot 2
1981 L.S.
12770
Brass Cap

Lot 3

Lot 4
1982 B.L.M.
Aluminum Cap

Lot 5

Lot 6
1912 G.L.O.
Brass Cap

Top of Hole

Bottom of Hole

Calculated Corner from Reference Monuments

Calculated Corner from Reference Monuments

Brass Cap No Inscription

LEGEND

- SECTION CORNER LOCATED
- SURFACE LOCATION
- BOTTOM HOLE LOCATION
- RECORD LOCATION OF CORNER

N89°55'26"W, 2579.39'
N89°55'26"W, 2642.74'
N00°17'32"W, 2652.51'
N00°28'46"W, 2637.36'
N01°37'46"W, 2769.29'
N00°10'49"E, 2645.67'
N88°43'42"W, 2632.66'
S88°48'30"E, 2686.32'

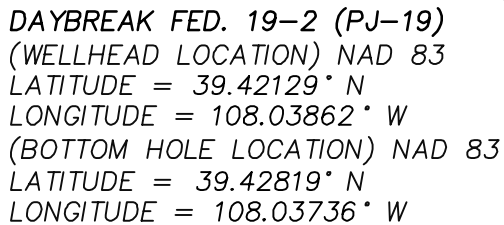
NW 1/4
NE 1/4
SW 1/4
SE 1/4

1527'
1976'
2383'
2040'

1000'
0'
1000'
(SCALE IN FEET)

N

<i>Location Plat</i>		<i>Scale: 1" = 1000'</i>	SHEET 1k OF 10
Project No.	10-04-04	Date Surveyed: 1/26/10	
Date Drawn:	2/25/10	Latest Revision Date: 4/07/10	



I, TED TAGGART OF FRUITA, COLORADO HEREBY CERTIFY THAT THIS MAP WAS MADE FROM NOTES TAKEN DURING AN ACTUAL SURVEY MADE BY ME OR UNDER MY DIRECTION FOR ENCANA OIL & GAS (USA) INC. AND THAT THIS LOCATION HAS BEEN STAKED ON THE GROUND AS SHOWN HEREON.



WASATCH
SURVEYING

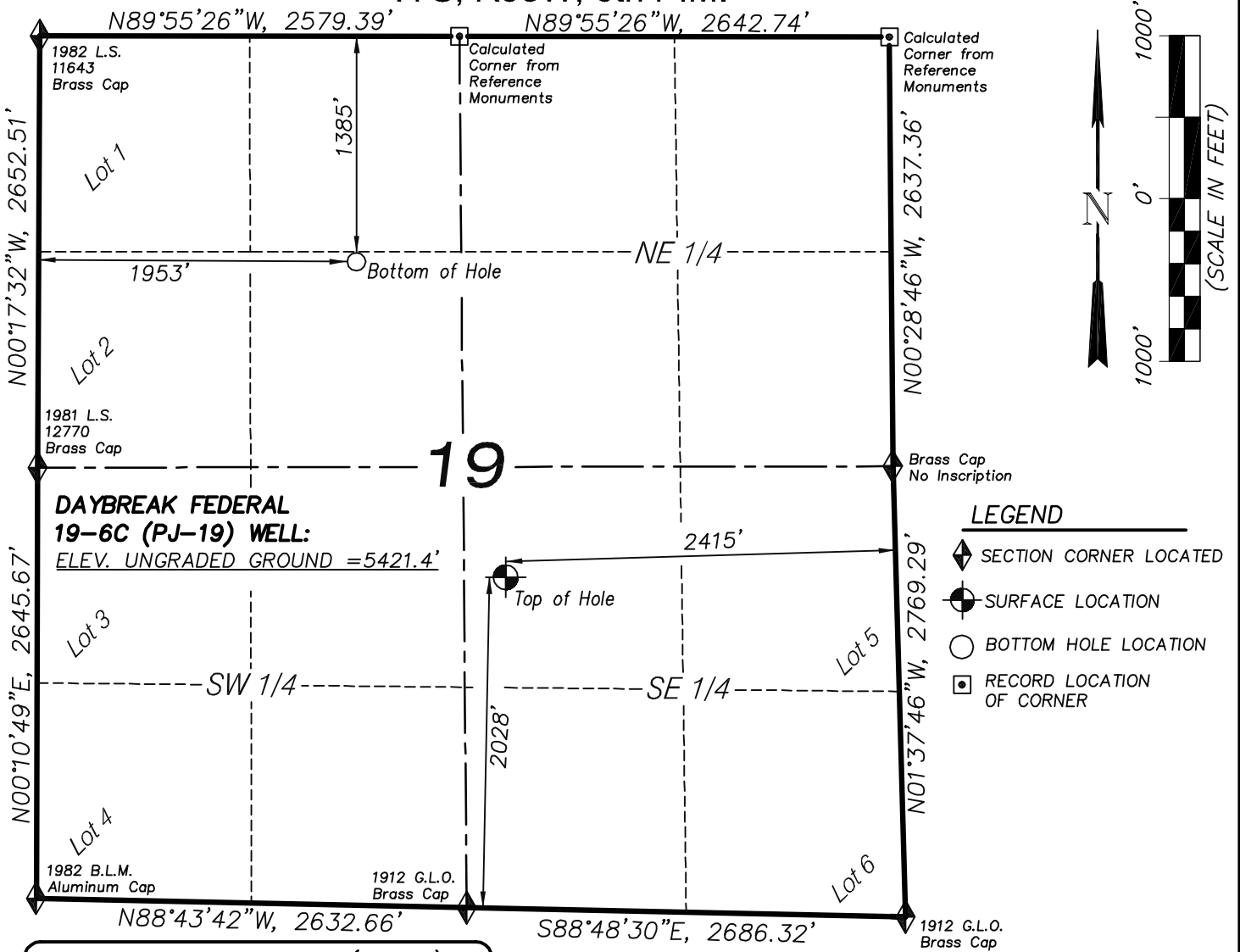
1. WELL FOOTAGES ARE MEASURED AT RIGHT ANGLES TO SECTION LINES.
2. BASIS OF BEARING: GEODETIC- BASED ON GPS OBSERVATIONS.
3. ELEVATIONS BASED ON GPS OBSERVATIONS, NAVD 88 (GEOID 03), POST PROCESSED USING NGS OPUS.
4. THE BOTTOM HOLE BEARS N08°15'54"E, 2539' FROM TOP OF HOLE.
5. SEE ADDENDUM TO LEGAL PLAT (SHEET 1p) FOR VISIBLE IMPROVEMENTS WITHIN 400 FEET OF THE PROPOSED OIL & GAS LOCATION.
6. CONTROL FOR SURVEY WAS ESTABLISHED USING DIFFERENTIALLY CORRECTED GPS FROM AN OPUS BASED CONTROL NETWORK. WELL LOCATION WAS ESTABLISHED USING NON-GPS CONVENTIONAL METHODS, THEREFORE NO PDOP READING WAS TAKEN.

APPLICATION for PERMIT to DRILL
EnCana Oil & Gas (USA) Inc.
Daybreak Federal 19-2 (PJ-19) Well

GARFIELD COUNTY, COLORADO

<i>Location Plat</i>		<i>Scale: 1" = 1000'</i>	SHEET 11 OF 10
Project No.	10-04-04	Date Surveyed: 1/26/10	
Date Drawn: 2/25/10	Latest Revision Date: 4/07/10		

T7S, R95W, 6th P.M.



DAYBREAK FED. 19-6C (PJ-19)
 (WELLHEAD LOCATION) NAD 83
 LATITUDE = 39.42128° N
 LONGITUDE = 108.03868° W
 (BOTTOM HOLE LOCATION) NAD 83
 LATITUDE = 39.42661° N
 LONGITUDE = 108.04184° W

CERTIFICATE OF SURVEYOR

I, TED TAGGART OF FRUITA, COLORADO HEREBY CERTIFY THAT THIS MAP WAS MADE FROM NOTES TAKEN DURING AN ACTUAL SURVEY MADE BY ME OR UNDER MY DIRECTION FOR ENCANA OIL & GAS (USA) INC. AND THAT THIS LOCATION HAS BEEN STAKED ON THE GROUND AS SHOWN HEREON.



906 Main Street
 Evanston, Wyoming 82930
 Phone No. (307) 789-4545

NOTES

1. WELL FOOTAGES ARE MEASURED AT RIGHT ANGLES TO SECTION LINES.
2. BASIS OF BEARING: GEODETIC- BASED ON GPS OBSERVATIONS.
3. ELEVATIONS BASED ON GPS OBSERVATIONS, NAVD 88 (GEOID 03), POST PROCESSED USING NGS OPUS.
4. THE BOTTOM HOLE BEARS N24°31'43"W, 2138' FROM TOP OF HOLE.
5. SEE ADDENDUM TO LEGAL PLAT (SHEET 1p) FOR VISIBLE IMPROVEMENTS WITHIN 400 FEET OF THE PROPOSED OIL & GAS LOCATION.
6. CONTROL FOR SURVEY WAS ESTABLISHED USING DIFFERENTIALLY CORRECTED GPS FROM AN OPUS BASED CONTROL NETWORK. WELL LOCATION WAS ESTABLISHED USING NON-GPS CONVENTIONAL METHODS, THEREFORE NO PDOP READING WAS TAKEN.

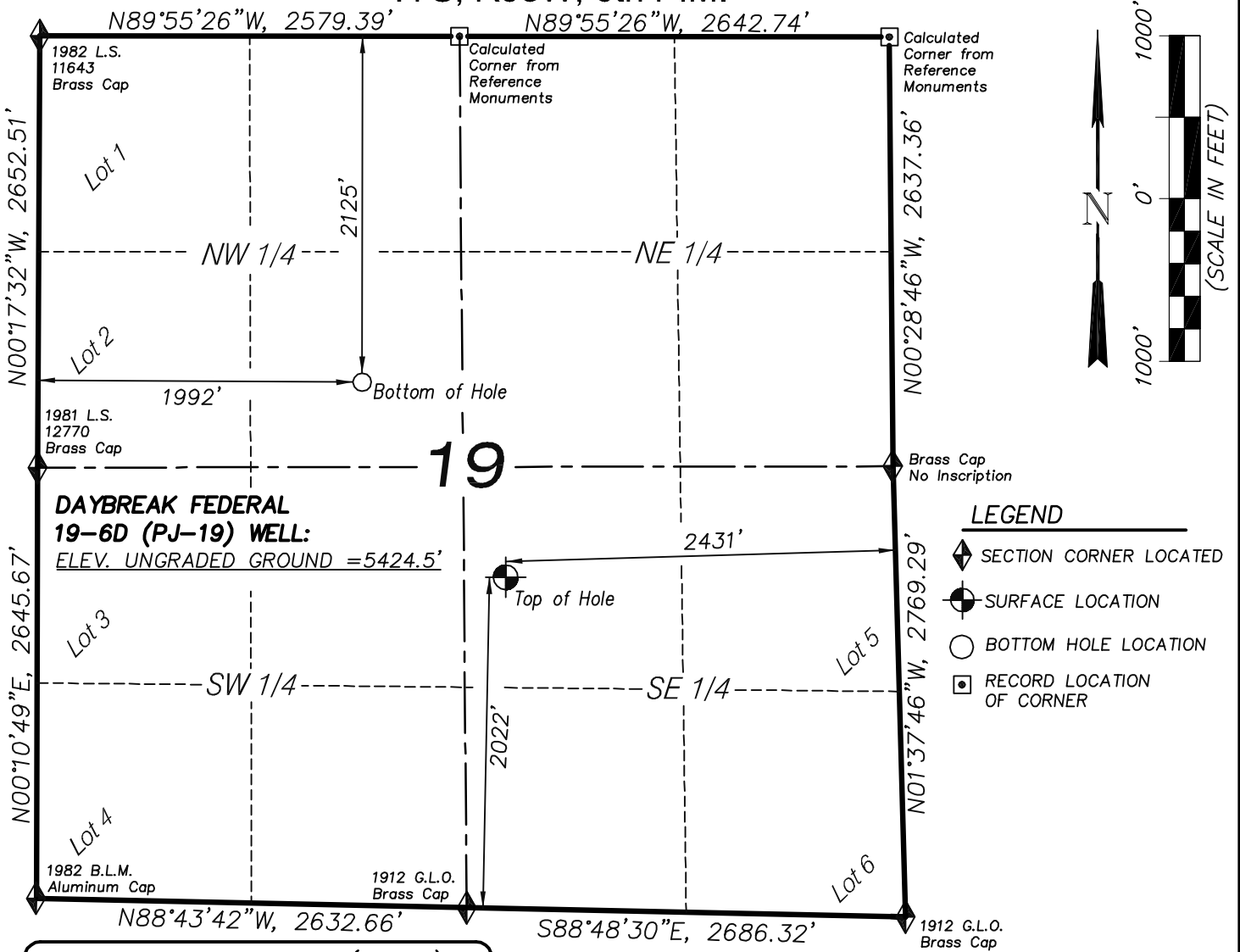
MAP to ACCOMPANY

APPLICATION for PERMIT to DRILL
EnCana Oil & Gas (USA) Inc.
Daybreak Federal 19-6C (PJ-19) Well
 NW1/4 SE1/4, SECTION 19
 T7S, R95W, 6th P.M.
 GARFIELD COUNTY, COLORADO

Location Plat		Scale: 1" = 1000'	SHEET 1m OF 10
Project No.	10-04-04	Date Surveyed: 1/26/10	
Date Drawn: 2/25/10	Latest Revision Date: 4/07/10		



T7S, R95W, 6th P.M.



**DAYBREAK FEDERAL
19-6D (PJ-19) WELL:**
ELEV. UNGRADED GROUND = 5424.5'

DAYBREAK FED. 19-6D (PJ-19)
(WELLHEAD LOCATION) NAD 83
LATITUDE = 39.42126° N
LONGITUDE = 108.03873° W
(BOTTOM HOLE LOCATION) NAD 83
LATITUDE = 39.42458° N
LONGITUDE = 108.04168° W

CERTIFICATE OF SURVEYOR

I, TED TAGGART OF FRUITA, COLORADO HEREBY CERTIFY THAT THIS MAP WAS MADE FROM NOTES TAKEN DURING AN ACTUAL SURVEY MADE BY ME OR UNDER MY DIRECTION FOR ENCANA OIL & GAS (USA) INC. AND THAT THIS LOCATION HAS BEEN STAKED ON THE GROUND AS SHOWN HEREON.



NOTES

1. WELL FOOTAGES ARE MEASURED AT RIGHT ANGLES TO SECTION LINES.
2. BASIS OF BEARING: GEODETIC- BASED ON GPS OBSERVATIONS.
3. ELEVATIONS BASED ON GPS OBSERVATIONS, NAVD 88 (GEOID 03), POST PROCESSED USING NGS OPUS.
4. THE BOTTOM HOLE BEARS N34°23'46"W, 1467' FROM TOP OF HOLE.
5. SEE ADDENDUM TO LEGAL PLAT (SHEET 1p) FOR VISIBLE IMPROVEMENTS WITHIN 400 FEET OF THE PROPOSED OIL & GAS LOCATION.
6. CONTROL FOR SURVEY WAS ESTABLISHED USING DIFFERENTIALLY CORRECTED GPS FROM AN OPUS BASED CONTROL NETWORK. WELL LOCATION WAS ESTABLISHED USING NON-GPS CONVENTIONAL METHODS, THEREFORE NO PDOP READING WAS TAKEN.

MAP to ACCOMPANY

APPLICATION for PERMIT to DRILL
EnCana Oil & Gas (USA) Inc.
Daybreak Federal 19-6D (PJ-19) Well
NW1/4 SE1/4, SECTION 19
T7S, R95W, 6th P.M.
GARFIELD COUNTY, COLORADO

Location Plat		Scale: 1" = 1000'	SHEET 1n OF 10
Project No.	10-04-04	Date Surveyed: 1/26/10	
Date Drawn:	2/25/10	Latest Revision Date: 4/07/10	

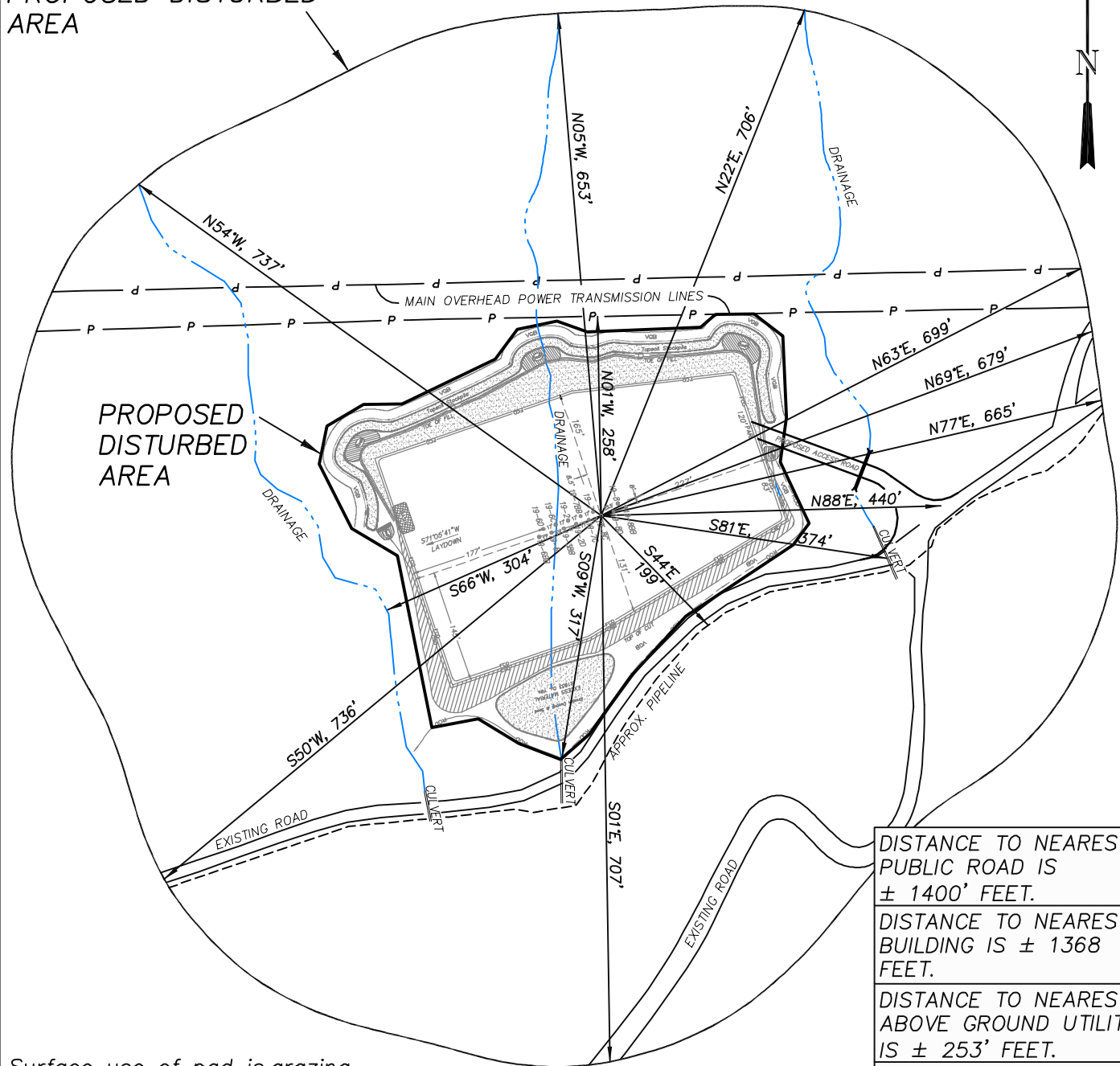


906 Main Street
Evanston, Wyoming 82930
Phone No. (307) 789-4545

EnCana Oil & Gas (USA) Inc.
ADDENDUM TO LEGAL PLATS FOR
PJ-19 Well Pad

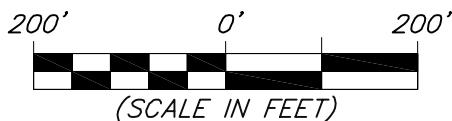
SECTION 19, T7S, R95W, 6th P.M.

400 FEET FROM
 PROPOSED DISTURBED
 AREA



DISTANCE TO NEAREST PUBLIC ROAD IS ± 1400' FEET.
DISTANCE TO NEAREST BUILDING IS ± 1368 FEET.
DISTANCE TO NEAREST ABOVE GROUND UTILITY IS ± 253' FEET.
DISTANCE TO NEAREST RAILROAD IS ± 9300 FEET.

Surface use of pad is grazing.
 Vegetation consists mainly of
 sage brush, oak brush and native
 grasses.

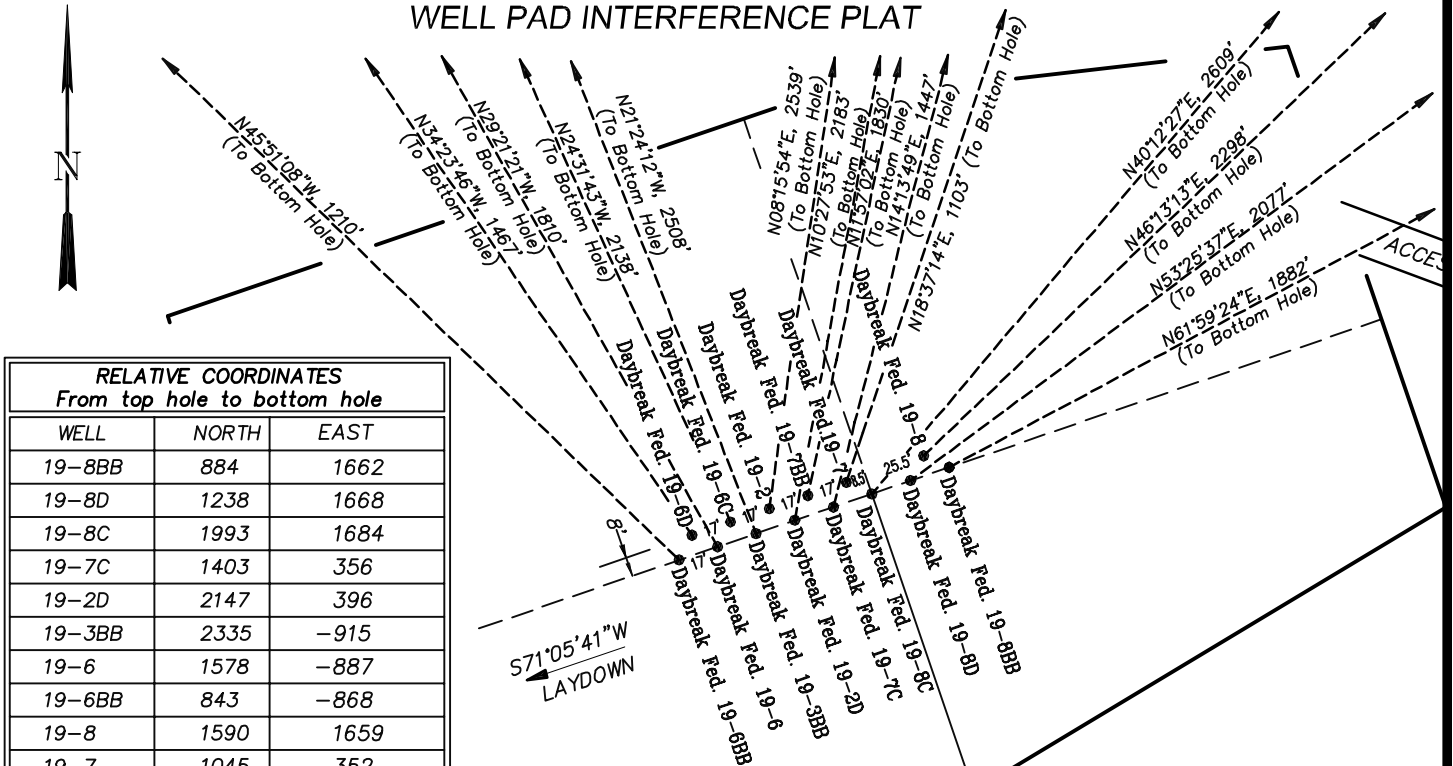


906 Main Street
 Evanston, Wyoming 82930
 Phone No. (307) 789-4545

Survey Addendum		Scale: 1" = 200'	SHEET 10 OF 10
Project No.	10-04-04	Date Surveyed: 1/26/10	
Date Drawn:	2/25/10	Latest Revision Date: 4/07/10	

EnCana Oil & Gas (USA) Inc.
Well Pad (PJ-19)
Section 19, T7S, R95W, 6th P.M.

WELL PAD INTERFERENCE PLAT



RELATIVE COORDINATES		
From top hole to bottom hole		
WELL	NORTH	EAST
19-8BB	884	1662
19-8D	1238	1668
19-8C	1993	1684
19-7C	1403	356
19-2D	2147	396
19-3BB	2335	-915
19-6	1578	-887
19-6BB	843	-868
19-8	1590	1659
19-7	1045	352
19-7BB	1790	379
19-2	2513	365
19-6C	1945	-888
19-6D	1210	-829

LATITUDE & LONGITUDE		
Surface position of Wellheads (NAD 83)		
WELL	LATITUDE	LONGITUDE
19-8BB	39.42134°	108.03836°
19-8D	39.42133°	108.03841°
19-8C	39.42131°	108.03847°
19-7C	39.42130°	108.03853°
19-2D	39.42128°	108.03858°
19-3BB	39.42127°	108.03864°
19-6	39.42125°	108.03870°
19-6BB	39.42124°	108.03875°
19-8	39.42136°	108.03839°
19-7	39.42132°	108.03851°
19-7BB	39.42131°	108.03856°
19-2	39.42129°	108.03862°
19-6C	39.42128°	108.03868°
19-6D	39.42126°	108.03873°

TOP HOLE FOOTAGES

DAYBREAK FEDERAL 19-8BB (PJ-19)
2052' FSL & 2323' FEL
 DAYBREAK FEDERAL 19-8D (PJ-19)
2047' FSL & 2340' FEL
 DAYBREAK FEDERAL 19-8C (PJ-19)
2041' FSL & 2356' FEL
 DAYBREAK FEDERAL 19-7C (PJ-19)
2035' FSL & 2372' FEL
 DAYBREAK FEDERAL 19-2D (PJ-19)
2029' FSL & 2388' FEL
 DAYBREAK FEDERAL 19-3BB (PJ-19)
2023' FSL & 2405' FEL
 DAYBREAK FEDERAL 19-6 (PJ-19)
2017' FSL & 2421' FEL
 DAYBREAK FEDERAL 19-6BB (PJ-19)
2012' FSL & 2437' FEL
 DAYBREAK FEDERAL 19-8 (PJ-19)
2057' FSL & 2334' FEL
 DAYBREAK FEDERAL 19-7 (PJ-19)
2045' FSL & 2366' FEL
 DAYBREAK FEDERAL 19-7BB (PJ-19)
2040' FSL & 2383' FEL
 DAYBREAK FEDERAL 19-2 (PJ-19)
2034' FSL & 2399' FEL
 DAYBREAK FEDERAL 19-6C (PJ-19)
2028' FSL & 2415' FEL
 DAYBREAK FEDERAL 19-6D (PJ-19)
2022' FSL & 2431' FEL

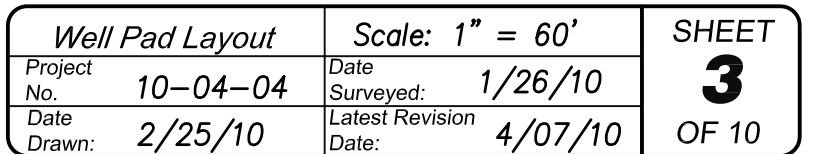
BOTTOM HOLE FOOTAGES

DAYBREAK FEDERAL 19-8BB (PJ-19)
2420' FNL & 642' FEL SEC. 19
 DAYBREAK FEDERAL 19-8D (PJ-19)
2072' FNL & 649' FEL SEC. 19
 DAYBREAK FEDERAL 19-8C (PJ-19)
1322' FNL & 642' FEL SEC. 19
 DAYBREAK FEDERAL 19-7C (PJ-19)
1920' FNL & 1992' FEL SEC. 19
 DAYBREAK FEDERAL 19-2D (PJ-19)
1181' FNL & 1961' FEL SEC. 19
 DAYBREAK FEDERAL 19-3BB (PJ-19)
1000' FNL & 1938' FWL SEC. 19
 DAYBREAK FEDERAL 19-6 (PJ-19)
1763' FNL & 1946' FWL SEC. 19
 DAYBREAK FEDERAL 19-6BB (PJ-19)
2503' FNL & 1945' FWL SEC. 19
 DAYBREAK FEDERAL 19-8 (PJ-19)
1709' FNL & 649' FEL SEC. 19
 DAYBREAK FEDERAL 19-7 (PJ-19)
2267' FNL & 1993' FEL SEC. 19
 DAYBREAK FEDERAL 19-7BB (PJ-19)
1527' FNL & 1976' FEL SEC. 19
 DAYBREAK FEDERAL 19-2 (PJ-19)
810' FNL & 2000' FEL SEC. 19
 DAYBREAK FEDERAL 19-6C (PJ-19)
1385' FNL & 1953' FWL SEC. 19
 DAYBREAK FEDERAL 19-6D (PJ-19)
2125' FNL & 1992' FWL SEC. 19



<i>Interference Plat</i>		Scale: 1" = 80'	SHEET 2 OF 10	
Project No.	10-04-04	Date Surveyed:		1/26/10
Date Drawn:	2/25/10	Latest Revision Date:		4/07/10

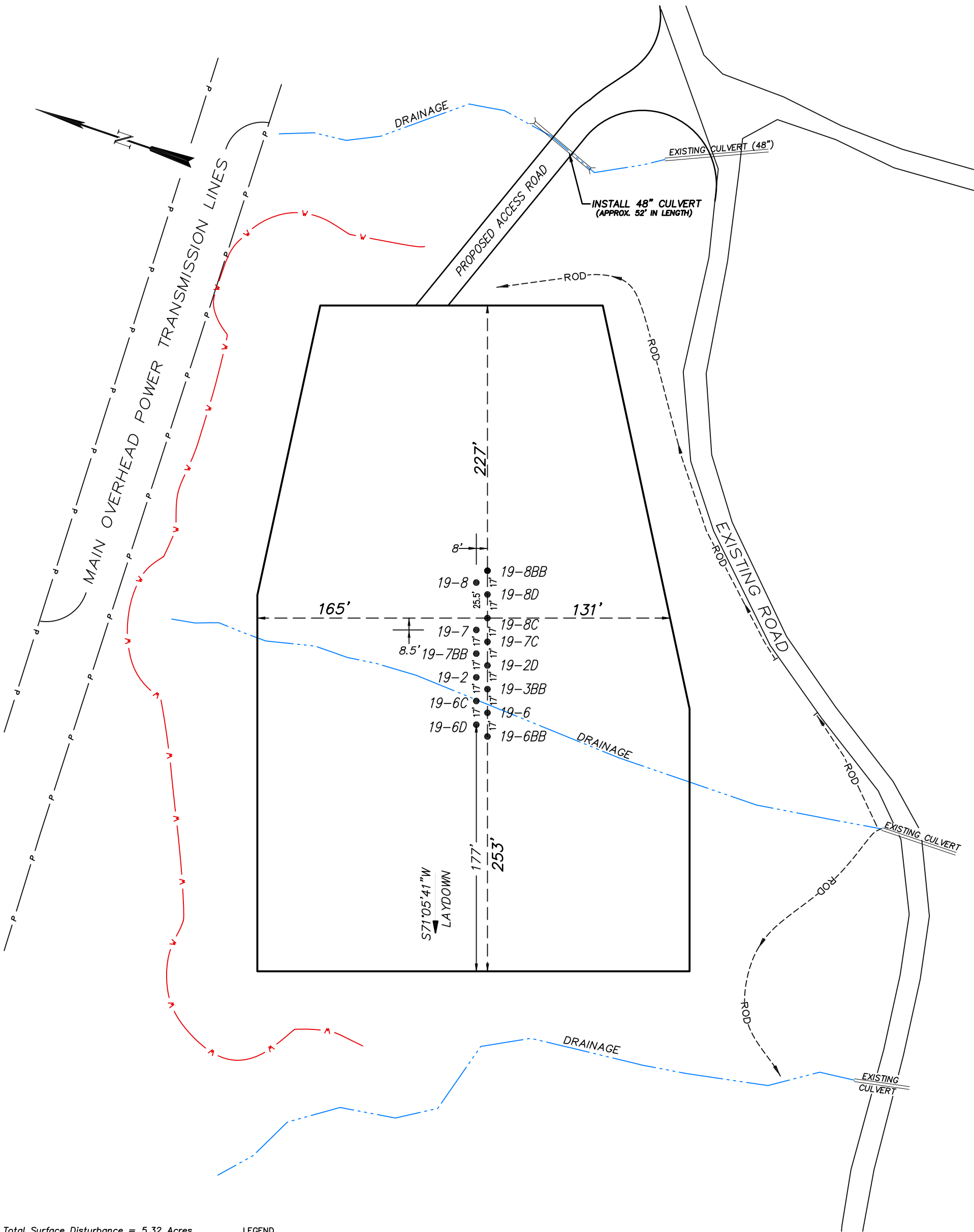
NW1/4 SE1/4, SECTION 19, T7S, R95W, 6th P.M.
WELL PAD LAYOUT



EnCana Oil & Gas (USA) Inc.

PJ-19 Well Pad

NW1/4 SE1/4, SECTION 19, T7S, R95W, 6th P.M.
PRE-CONSTRUCTION PLAT



Total Surface Disturbance = 5.32 Acres
(See Sheet 4 for Details)

- NOTES:
- (1) Slope Track and/or Terrace all Slopes and Piles
 - (2) Erosion Control & Seed Topsoil
 - (3) Erosion Control & Seed Outside
 - (4) Slope away from Substructure Areas 1% to 3% to Flow Control

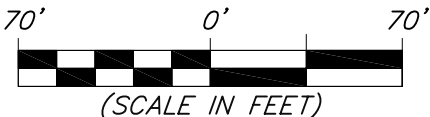
- LEGEND
- SLASH
 - ST = SEDIMENT TRAP
 - SedR = SEDIMENT RESERVOIR
 - R.O.D. = RUN-ON DIVERSION
 - PERIMETER CONTROL (WATTLES)
 - CSD = CUT SLOPE DIVERSION (BERM TOE OF CUT SLOPE)
 - D = FILL DIVERSION TO SEDIMENT TRAP
 - VCB = VEGETATION BUFFER (UNDISTURBED LAND INSIDE PC)
 - FCD = FLOW CONTROL DITCH
 - PARI = PAD/ACCESS ROAD INTERFACE
 - LEVEL SPREADER
 - TOE BERM (PLACED AT TOE OF ALL FILL SLOPES/STOCKPILES)
 - TOPSOIL BERM
 - SEED, ECB & FLEX
 - SEED

PRE-CONSTRUCTION PHASE COMPLETE,
AUTHORIZATION TO CONTINUE
CONSTRUCTION.

SIGNATURE: _____



906 Main Street
Evanston, Wyoming 82930
Phone No. (307) 789-4545



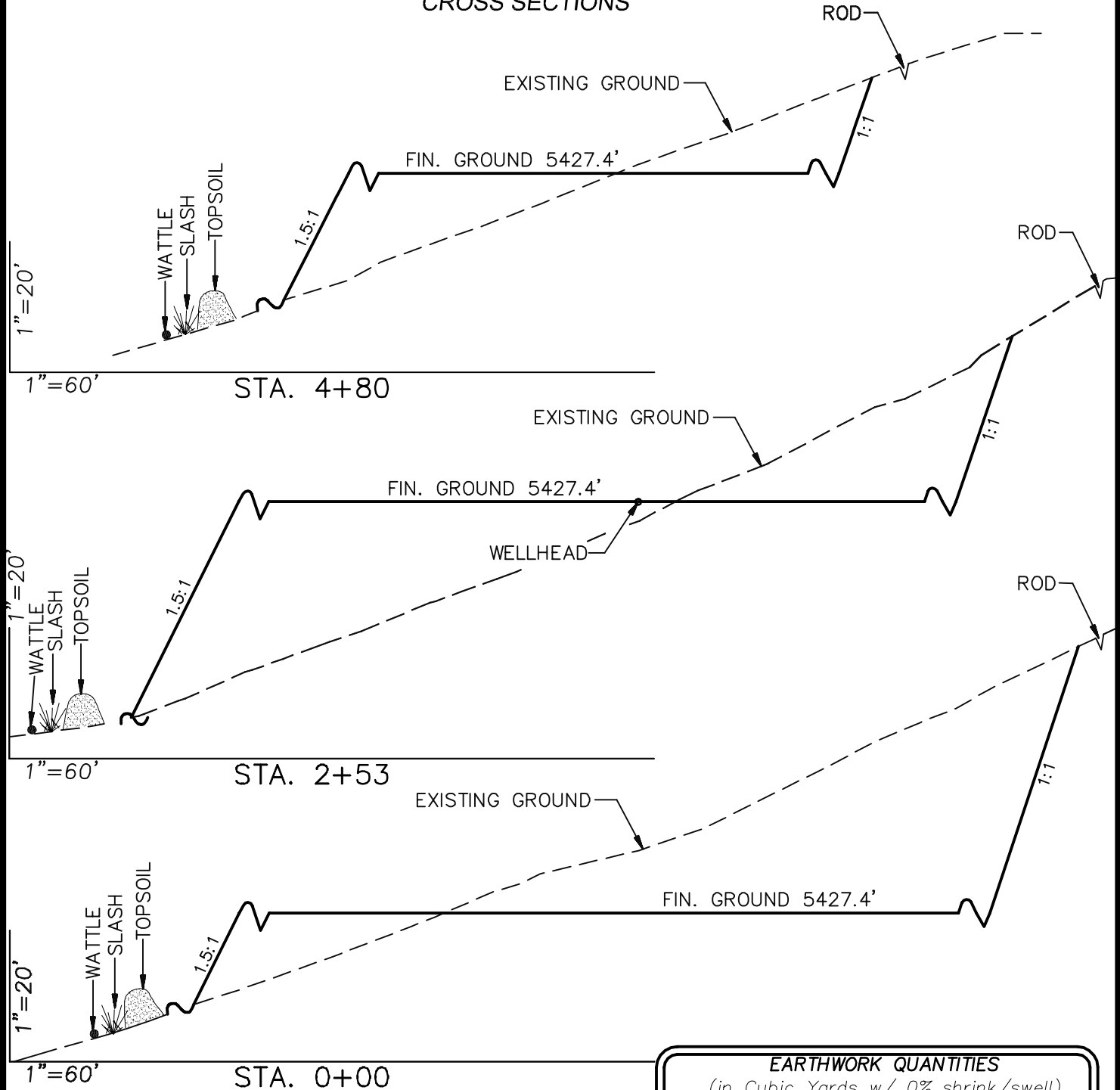
Pre-Construction		Scale: 1" = 70'	
Project No.	10-04-04	Date Surveyed:	1/26/10
Date Drawn:	2/25/10	Latest Revision Date:	4/07/10

SHEET
3a
OF 10

EnCana Oil & Gas (USA) Inc.

Well Pad (PJ-19)

CROSS SECTIONS



SURFACE DISTURBANCE (IN ACRES)

Well Pad	3.1
Side Slopes	0.7
Topsoil & Waste Material	1.52
TOTAL	5.32

NOTE:
ALL CUT SLOPES ARE
AT 1:1 AND ALL FILL
SLOPES ARE AT 1.5:1
UNLESS OTHERWISE
NOTED.

EARTHWORK QUANTITIES

(in Cubic Yards w/ 0% shrink/swell)

ITEM	CUT	FILL	6" TOPSOIL	EXCESS
PAD	29964	28032	Topsoil not included in Excavation	1933
PIT	0	0		0
TOTALS	29964	28032	3091	* 1933

* Approx. 1000 c.y. excess material to
be used for road construction.



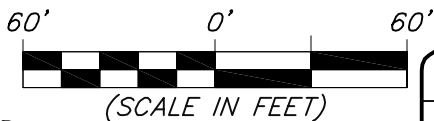
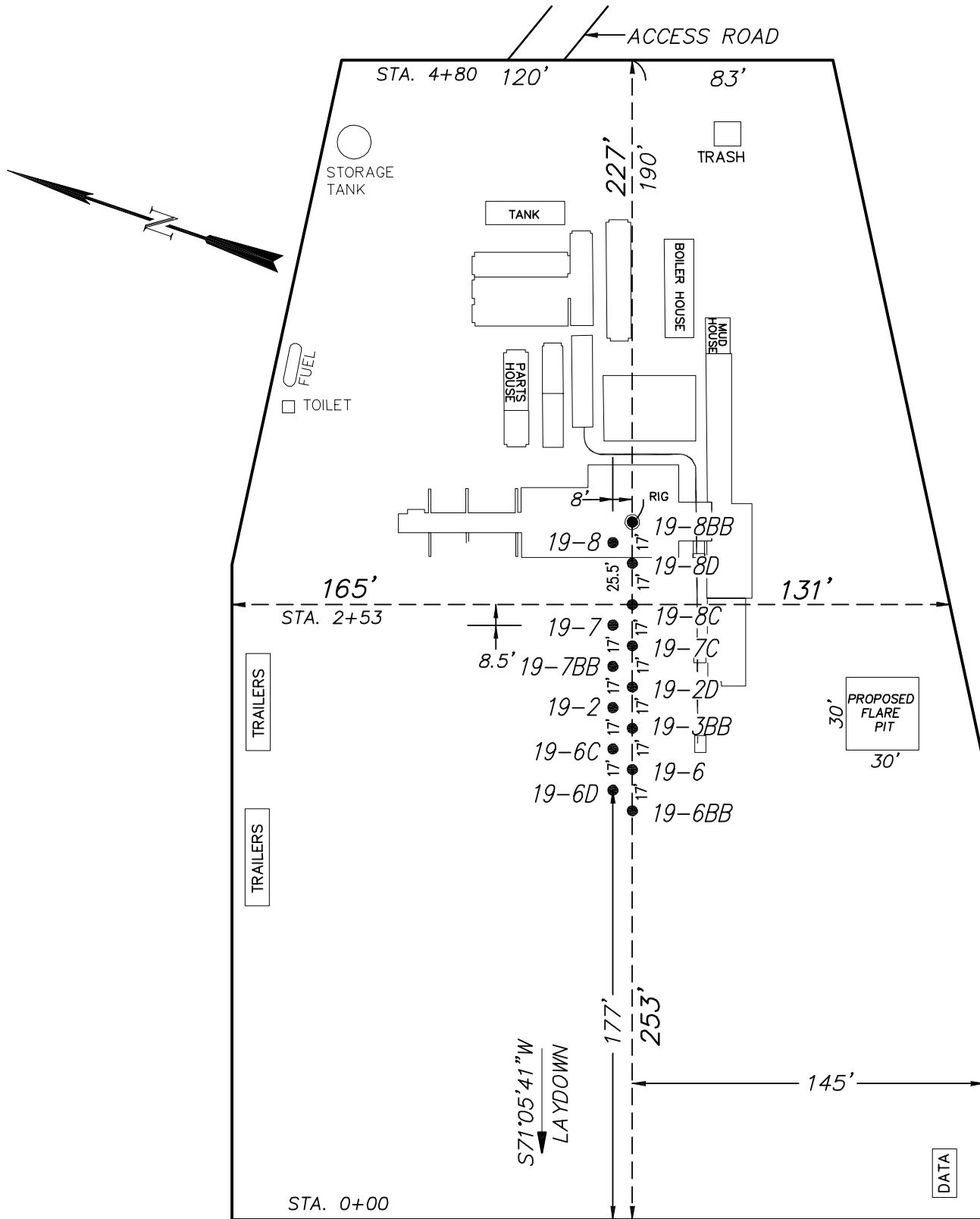
906 Main Street
Evanston, Wyoming 82930
Phone No. (307) 789-4545

Cross Sections		Scale: As Shown		SHEET 4 OF 10
Project No.	10-04-04	Date Surveyed:	1/26/10	
Date Drawn:	2/25/10	Latest Revision Date:	4/07/10	

EnCana Oil & Gas (USA) Inc.

Well Pad (PJ-19)

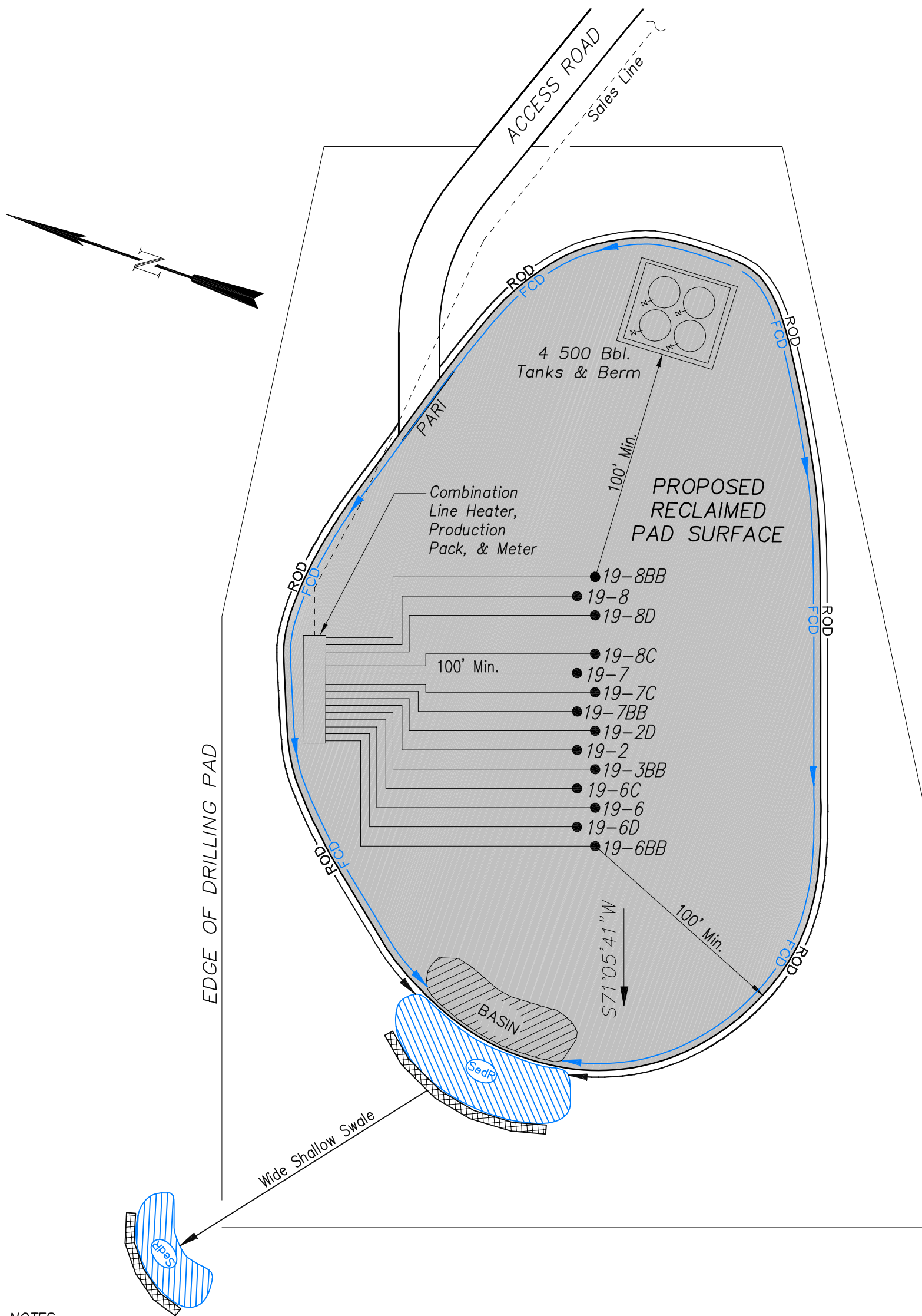
TYPICAL RIG LAYOUT



906 Main Street
Evanston, Wyoming 82930
Phone No. (307) 789-4545

Rig Layout		Scale: 1" = 60'		SHEET 5 OF 10
Project No.	10-04-04	Date Surveyed:	1/26/10	
Date Drawn:	2/25/10	Latest Revision Date:	4/07/10	

EnCana Oil & Gas (USA) Inc.
PJ-19 Well Pad
PRODUCTION SCHEMATIC



NOTES:

1. Set Tanks High so pad Entrance & Tank Area Can Drain to Pad Basin
2. Gravel Pad 75' from Wells & Around Tanks and Separators
3. Pad Drains to Pad Basin at a 3% to 5% slope
4. BMP Selection and Position may change Depending on Actual Conditions Encountered During the Construction Process

NOTE:

Actual Equipment Layout and Reclaimed Pad Surface Area May Change due to Production Requirements or Site Conditions.

ESTIMATED AREAS
RECLAIMED AREA: 3.72 ACRES
UNRECLAIMED AREA: 1.6 ACRES

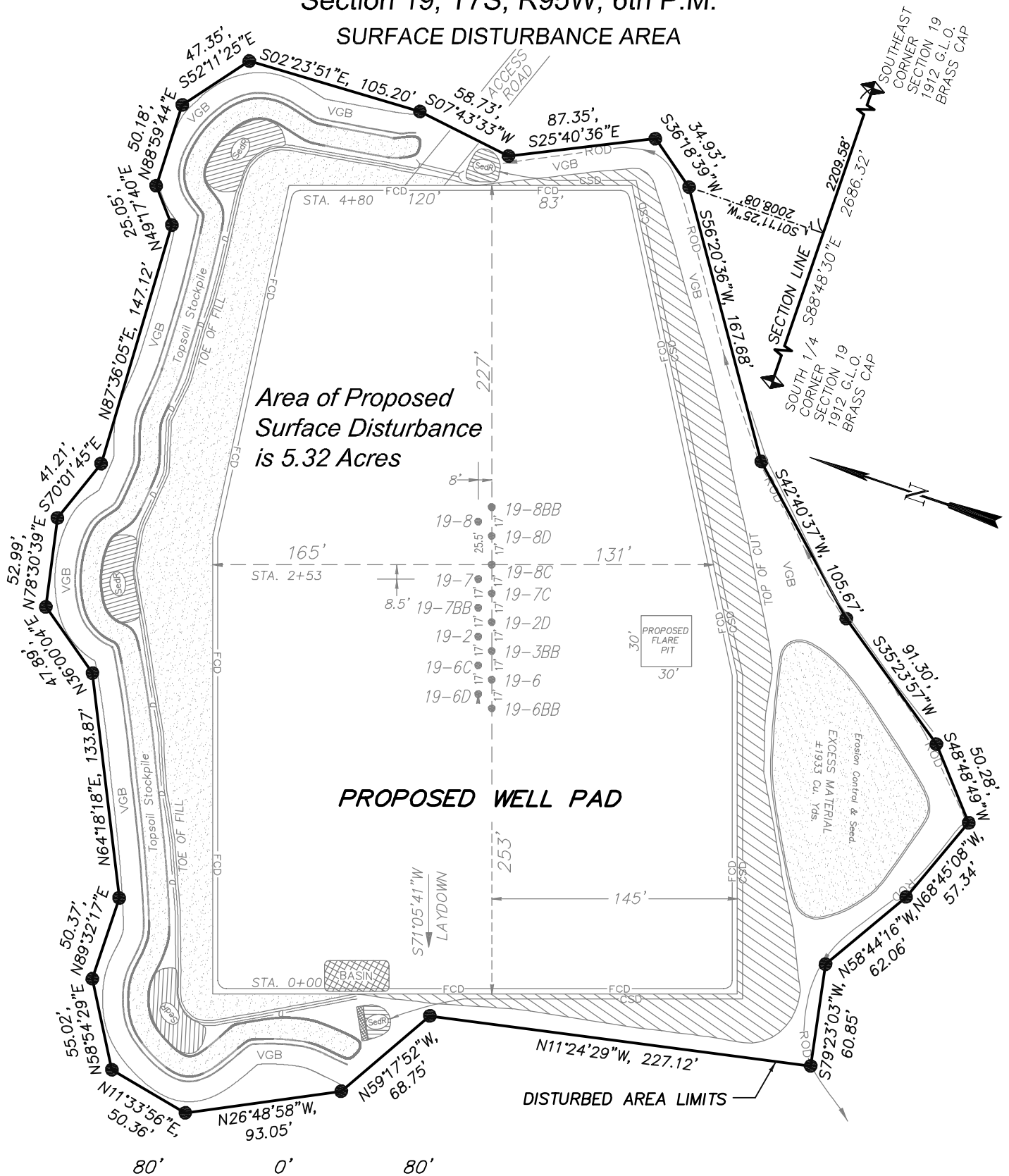
- LEGEND
- SLASH
 - ST = SEDIMENT TRAP
 - SedR = SEDIMENT RESERVOIR
 - R.O.D. = RUN-ON DIVERSION
 - PERIMETER CONTROL (WATTLES)
 - CSD = CUT SLOPE DIVERSION (BERM TOE OF CUT SLOPE)
 - D = FILL DIVERSION TO SEDIMENT TRAP
 - VGB = VEGETATION BUFFER (UNDISTURBED LAND INSIDE PC)
 - FCD = FLOW CONTROL DITCH
 - PARI = PAD/ACCESS ROAD INTERFACE
 - LEVEL SPREADER
 - TOE BERM (PLACED AT TOE OF ALL FILL SLOPES/STOCKPILES)
 - TOPSOIL BERM
 - SEED, ECB & FLEX
 - SEED

EnCana Oil & Gas (USA) Inc.

Well Pad (PJ-19)

Section 19, T7S, R95W, 6th P.M.

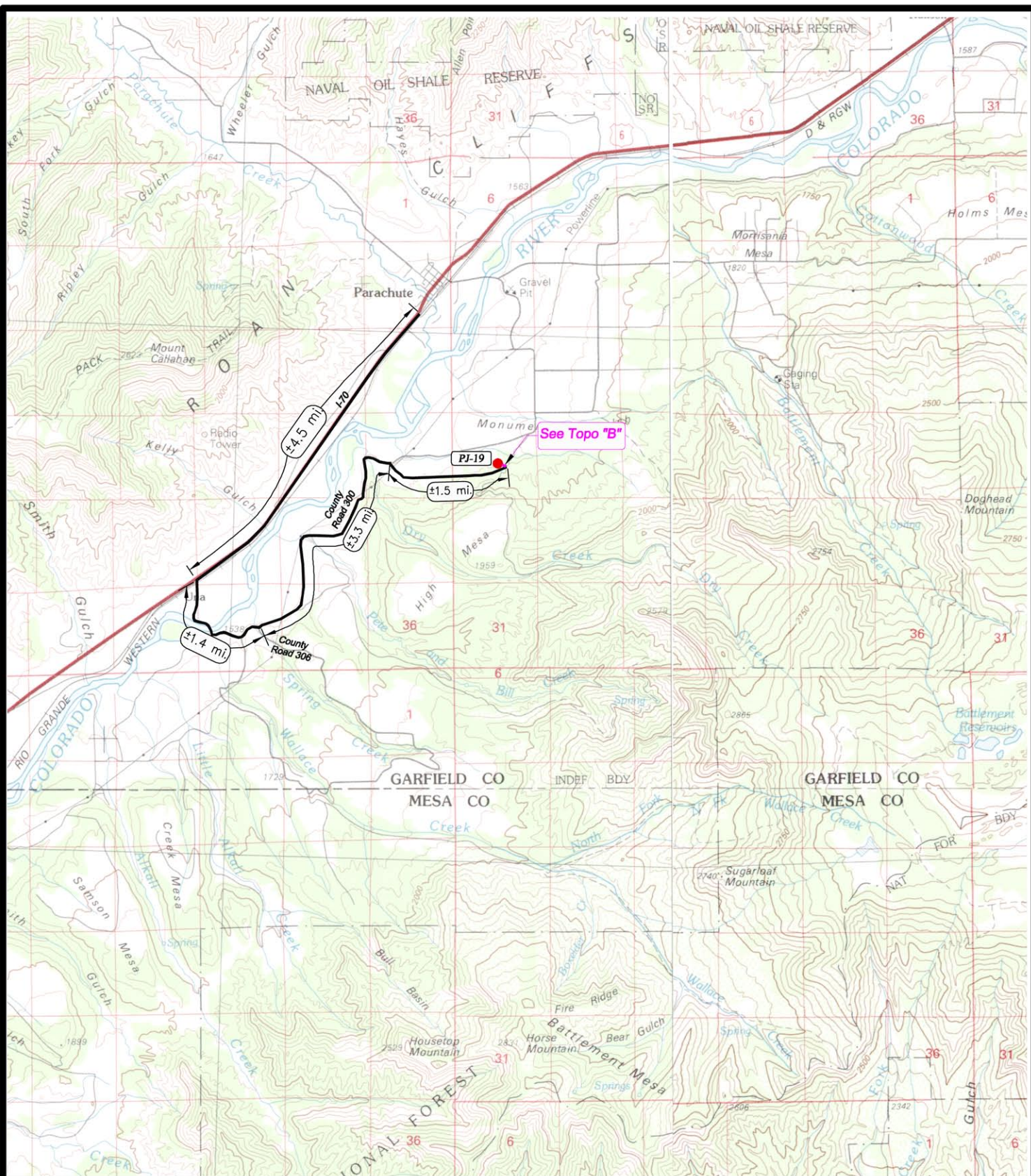
SURFACE DISTURBANCE AREA



(SCALE IN FEET)

906 Main Street
Evanston, Wyoming 82930
Phone No. (307) 789-4545

Surface Disturbance		Scale: 1" = 80'	SHEET 7 OF 10
Project No.	10-04-04	Date Surveyed: 1/26/10	
Date Drawn:	2/25/10	Latest Revision Date: 4/07/10	



LEGEND

- PROPOSED LOCATION
- PROPOSED ROAD
- EXISTING ROAD

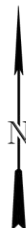
EnCana Oil & Gas (USA) Inc.

PJ-19 PAD
SECTION 19, T7S, R95W, 6th, P.M.
GARFIELD COUNTY, COLORADO



Wasatch Surveying Associates

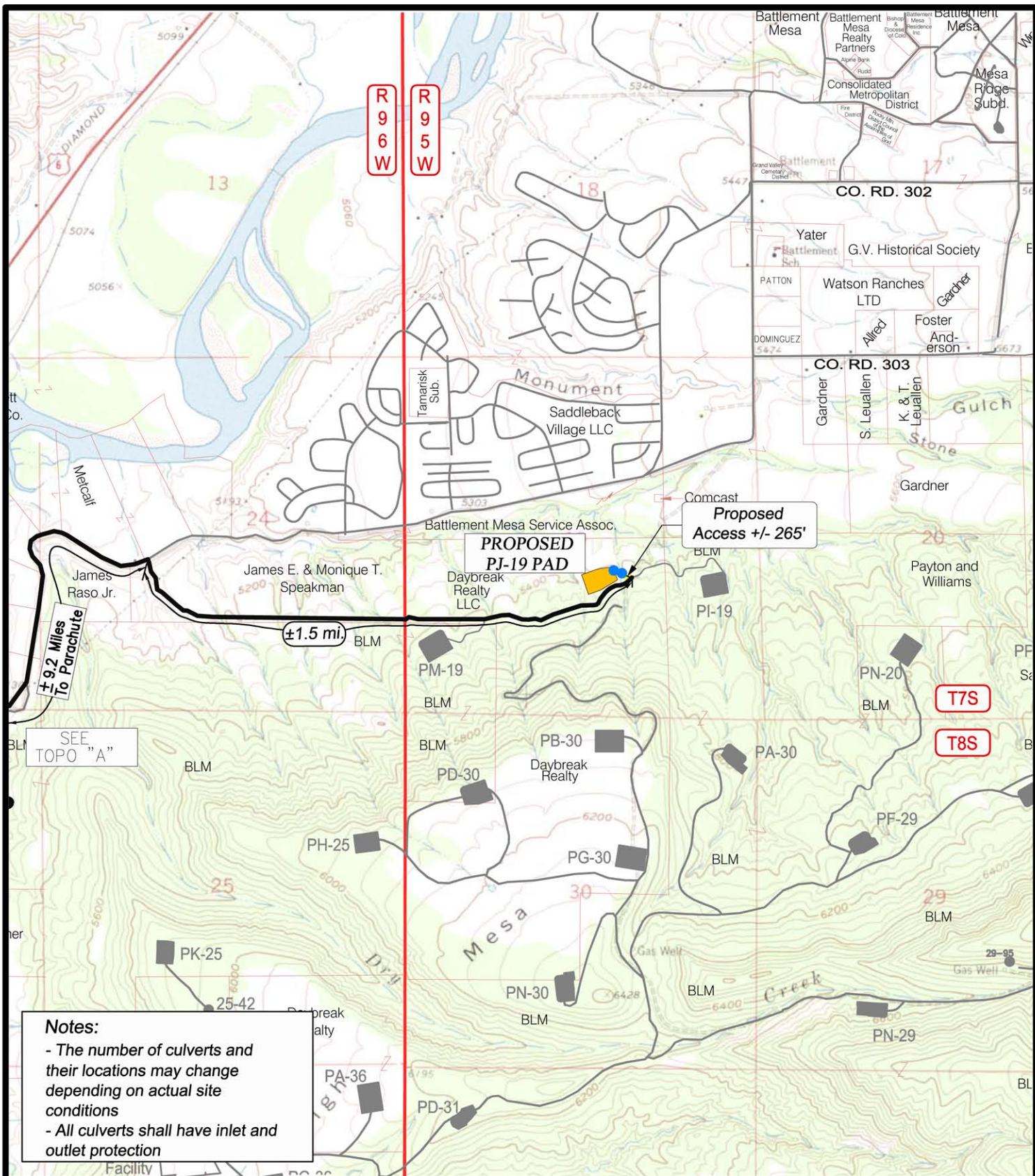
906 Main Street Evanston, Wyoming 82930
Phone No. (307) 789-4545 Fax 307-789-5722



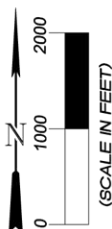
TOPO A

PROJECT NUMBER
10-04-04
DATE: 2/02/10
SCALE: 1:100,000

8
of 10



Wasatch Surveying Associates
906 Main Street Evanston, Wyoming 82930
Phone No. (307) 789-4545 Fax 307-789-5722



TOPO B

PROJECT NUMBER
10-04-04
DATE: 2/02/10
SCALE: 1" = 2000'

9
of 10

EnCana Oil & Gas (USA) Inc.
PJ-19 Well Pad
Section 19, T7S, R95W, 6th P.M.



LOOKING NORTH

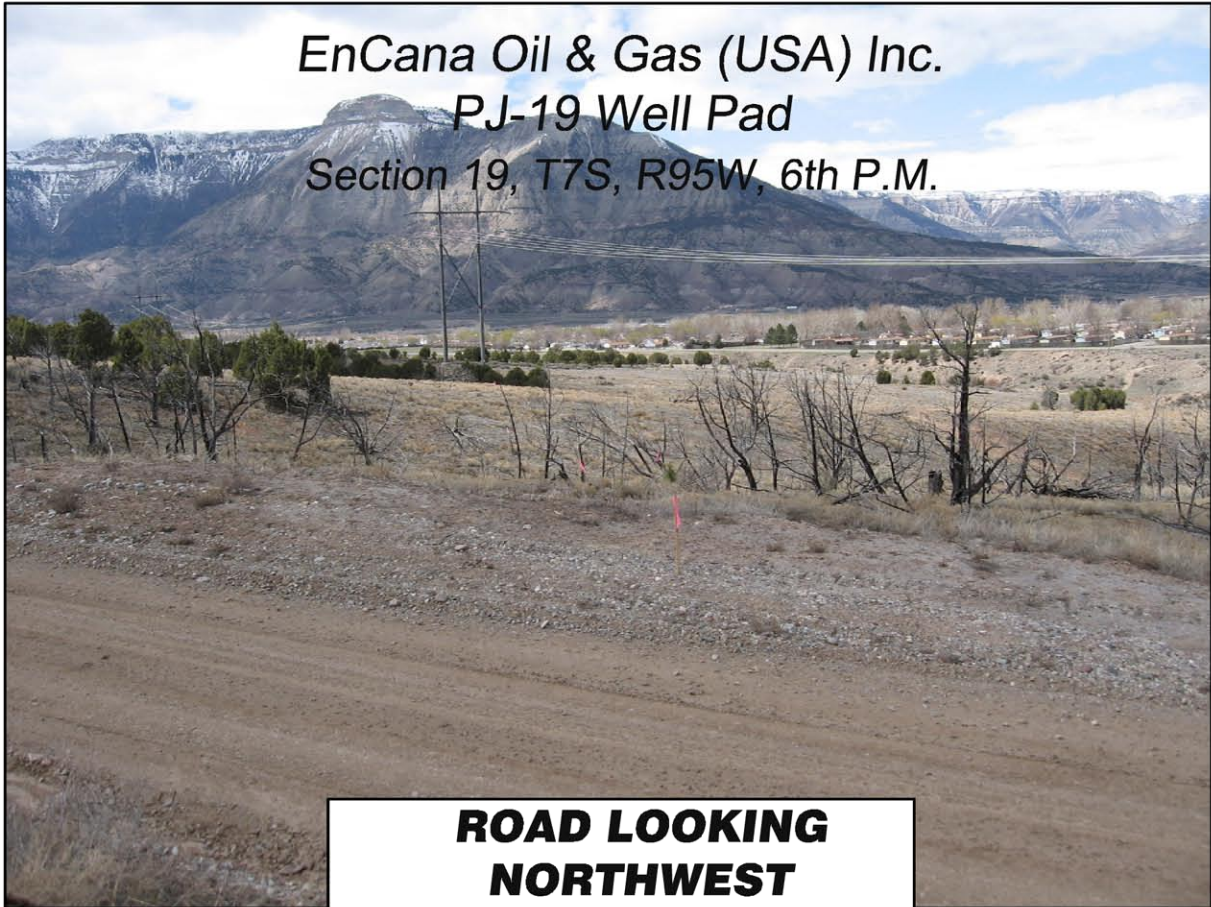
Date Taken: 4/07/10



LOOKING EAST

Date Taken: 4/07/10

EnCana Oil & Gas (USA) Inc.
PJ-19 Well Pad
Section 19, T7S, R95W, 6th P.M.



**ROAD LOOKING
NORTHWEST**

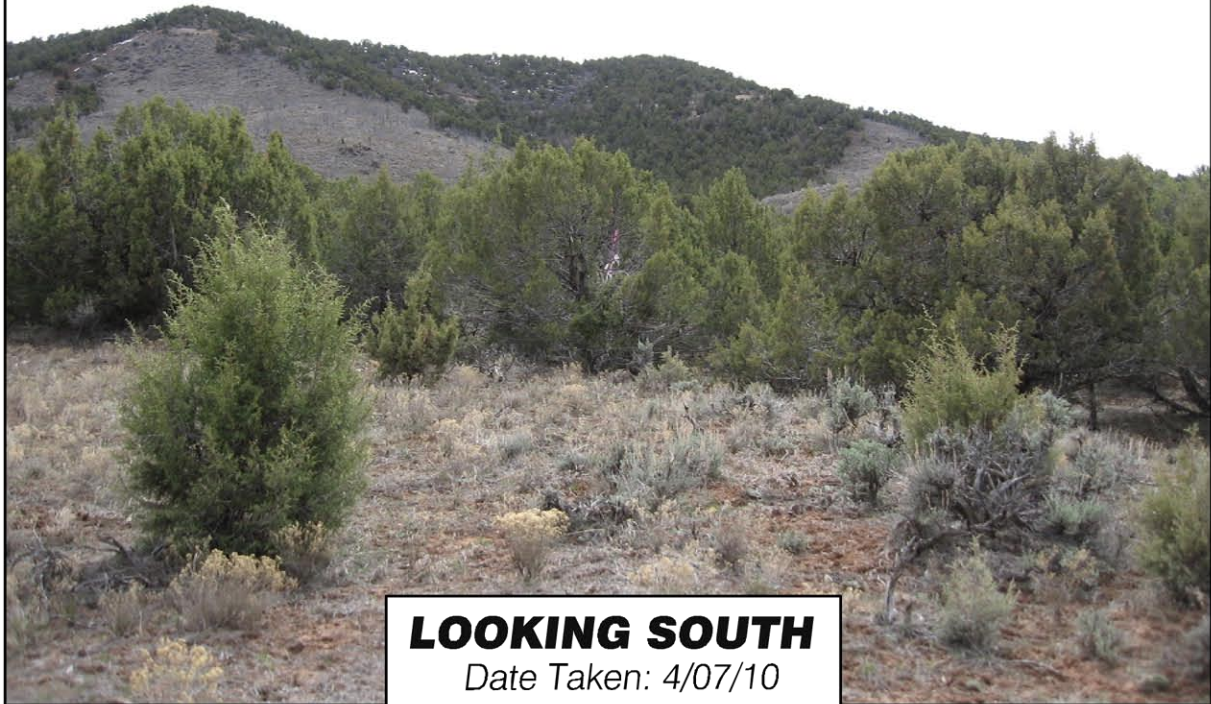
Date Taken: 4/07/10



WELL FLAG

Date Taken: 4/07/10

EnCana Oil & Gas (USA) Inc.
PJ-19 Well Pad
Section 19, T7S, R95W, 6th P.M.



LOOKING SOUTH

Date Taken: 4/07/10



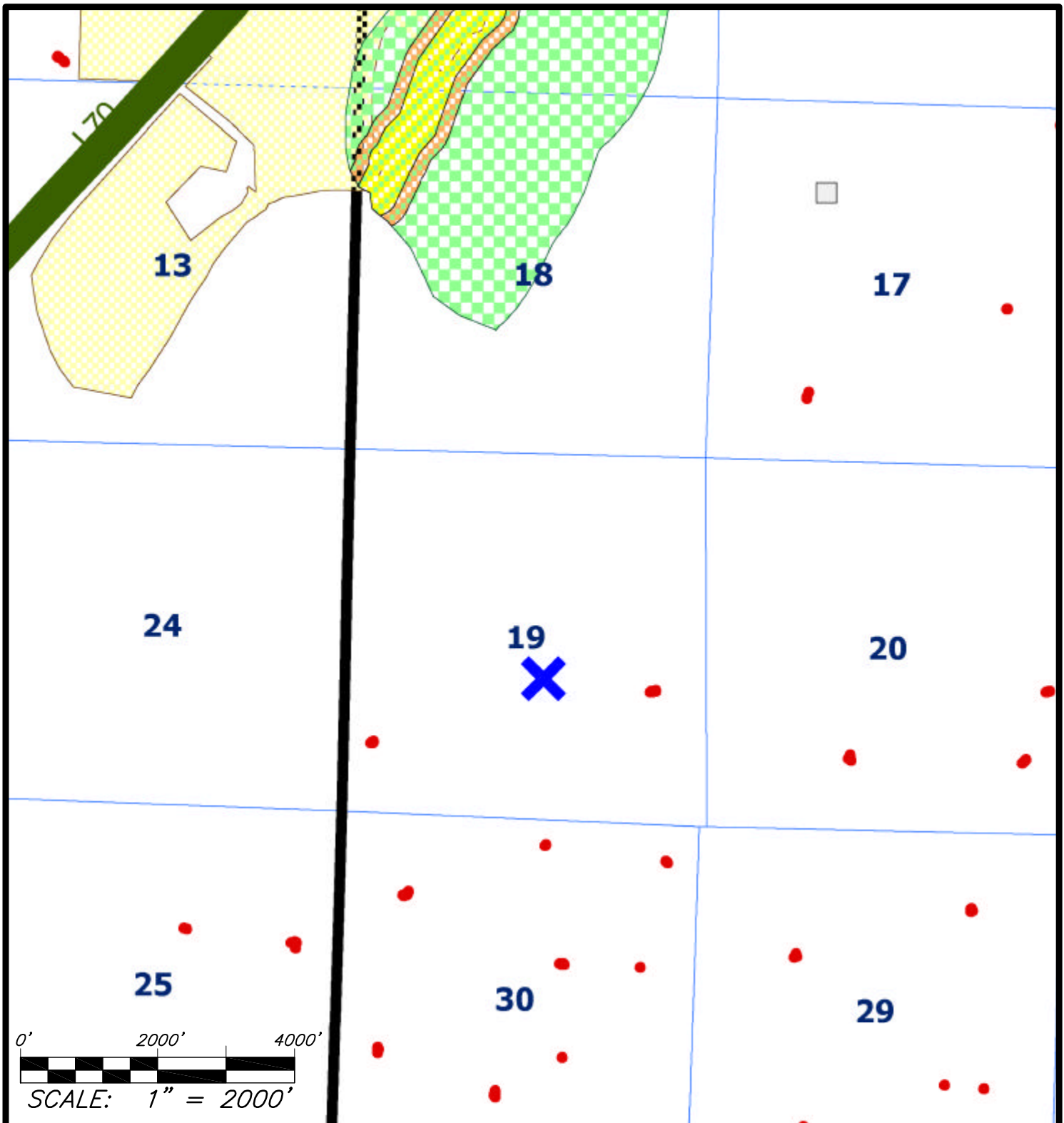
LOOKING WEST

Date Taken: 4/07/10






EnCana Oil & Gas (USA) Inc.

PJ-19 Driving Directions

Beginning at the town of **Parachute, Colorado** and traveling Southwesterly on Hwy 6 Approx. 4.5 miles; turn left (south) onto CR 300, go across the railroad tracks and the Colorado River traveling then easterly approx. 4.7 miles; turn right onto existing road, traveling easterly 1.5 miles to the beginning of the proposed access road on the left; follow the flagged survey line northwesterly approximately 265 feet to the proposed **PJ-19 Well Pad**.



MAP LEGEND

-  INTERNAL BUFFER ZONE (0-300')
-  INTERMEDIATE BUFFER ZONE (301-500')
-  EXTERNAL BUFFER ZONE (501-2640')
-  PROPOSED WELL SITE
-  EXISTING WELL SITE



Wasatch Surveying Associates

906 Main Street Evanston, Wyoming 82930
Phone No. (307) 789-4545 Fax 307-789-5722

ENCANA OIL & GAS (USA) INC.

PUBLIC WATER SYSTEM PROTECTION MAP

FOR THE
PROPOSED PJ-19 WELL PAD
SECTION 19, T7S, R95W, 6th, P.M.
GARFIELD COUNTY, COLORADO

RULE 317B EXHIBIT

PROJECT NUMBER 10-04-04
DATE: 2/1/10
SCALE: 1"=2000'

SHEET 1 OF 1
