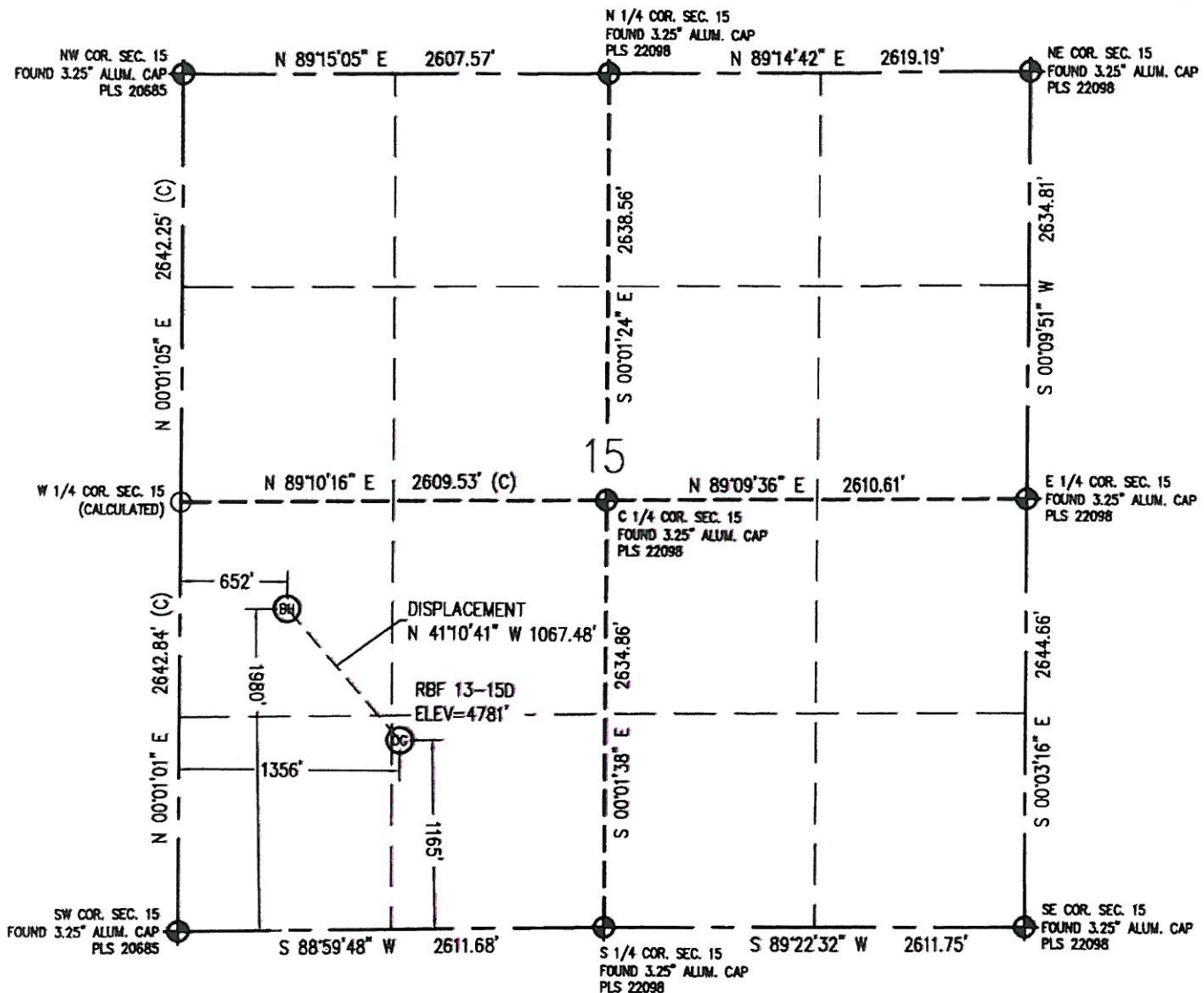


WELL LOCATION CERTIFICATE

THIS MAP DOES NOT REPRESENT A BOUNDARY SURVEY

SECTION 15
TOWNSHIP 6 NORTH
RANGE 67 WEST



IN ACCORDANCE WITH A REQUEST FROM CRAIG RASMUSON - SYNERGY RESOURCES CORP., BASELINE ENGINEERING CORP. HAS DETERMINED THE LOCATION OF THE RBF 13-150 TO BE 1165' FSL AND 1356' FWL AS MEASURED AT NINETY (90) DEGREES FROM THE SECTION LINE OF SECTION 15, TOWNSHIP 6 NORTH, RANGE 67 WEST AND THE BOTTOM HOLE LOCATION TO BE 1980' FSL AND 652' FWL OF SECTION 15, TOWNSHIP 6 NORTH, RANGE 67 WEST, 6TH PRINCIPAL MERIDIAN, WELD COUNTY, COLORADO.

I HEREBY CERTIFY THAT THIS WELL LOCATION CERTIFICATE WAS PREPARED BY ME, OR UNDER MY DIRECT SUPERVISION, THAT THE FIELD WORK WAS COMPLETED ON 4/16/2010, THAT IT IS NOT A LAND SURVEY PLAT OR AN IMPROVEMENT SURVEY PLAT, AND THAT IT IS NOT TO BE RELIED UPON FOR ESTABLISHMENT OF FENCE, BUILDING, OR OTHER FUTURE IMPROVEMENT LINES.

Scale 1" = 1000 ft

- NOTES:
- 1) LAT/LONG SHOWN ARE BASED ON A GPS OBSERVATION (NAD83).
 - 2) BEARINGS SHOWN ARE GRID BEARINGS OF THE COLORADO STATE PLANE COORDINATE SYSTEM, NORTH ZONE, NORTH AMERICAN DATUM 1983/2007.
 - 3) GROUND ELEVATIONS ARE BASED ON A GPS OBSERVATION (NAVD 88 DATUM).
 - 4) ALL DISTANCES SHOWN ARE FIELD MEASURED UNLESS OTHERWISE NOTED.
 - 5) THE NEAREST EXISTING WELL IS: HAAS 1 - 3264' EAST.
 - 6) IMPROVEMENTS: SEE VISIBLE IMPROVEMENTS EXHIBIT FOR ALL VISIBLE IMPROVEMENTS WITHIN 400' OF WELL HEAD.
 - 7) SURFACE USE: OPEN FIELD.

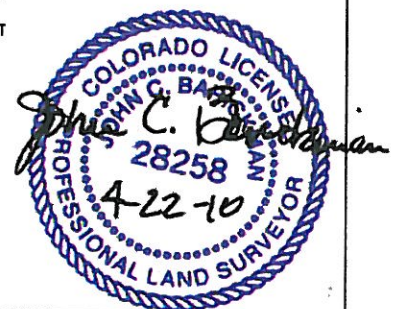
NOTICE: According to Colorado law you MUST commence any legal action based upon any defect in this W.L.C. within three years after you first discover such defect. In no event may any action based upon any defect in this W.L.C. be commenced more than ten years from this said date of the certification show hereon.

SURFACE HOLE:
LATITUDE: 40.482843° N
LONGITUDE: 104.884155° W
POOP: 1.0
1/4, 1/4: SE1/4 SW1/4
NEAREST PROPERTY LINE: 155' N

BOTTOM HOLE:
LATITUDE: 40.485062° N
LONGITUDE: 104.886661° W

LEGEND

- FOUND/SET SURVEY MONUMENT PER MONUMENT RECORD EXCEPTIONS NOTED.
- CALCULATED SURVEY MONUMENT POSITION
- (C) - CALCULATED DIMENSION



John C. Barickman
Professional Land Surveyor Registration No. 28258
State of Colorado
FOR AND ON BEHALF OF BASELINE ENGINEERING CORP.

Completed
4/22/2010

JOB #: SYN6N67W15-01