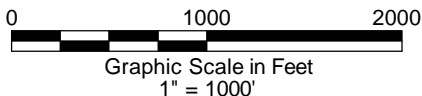
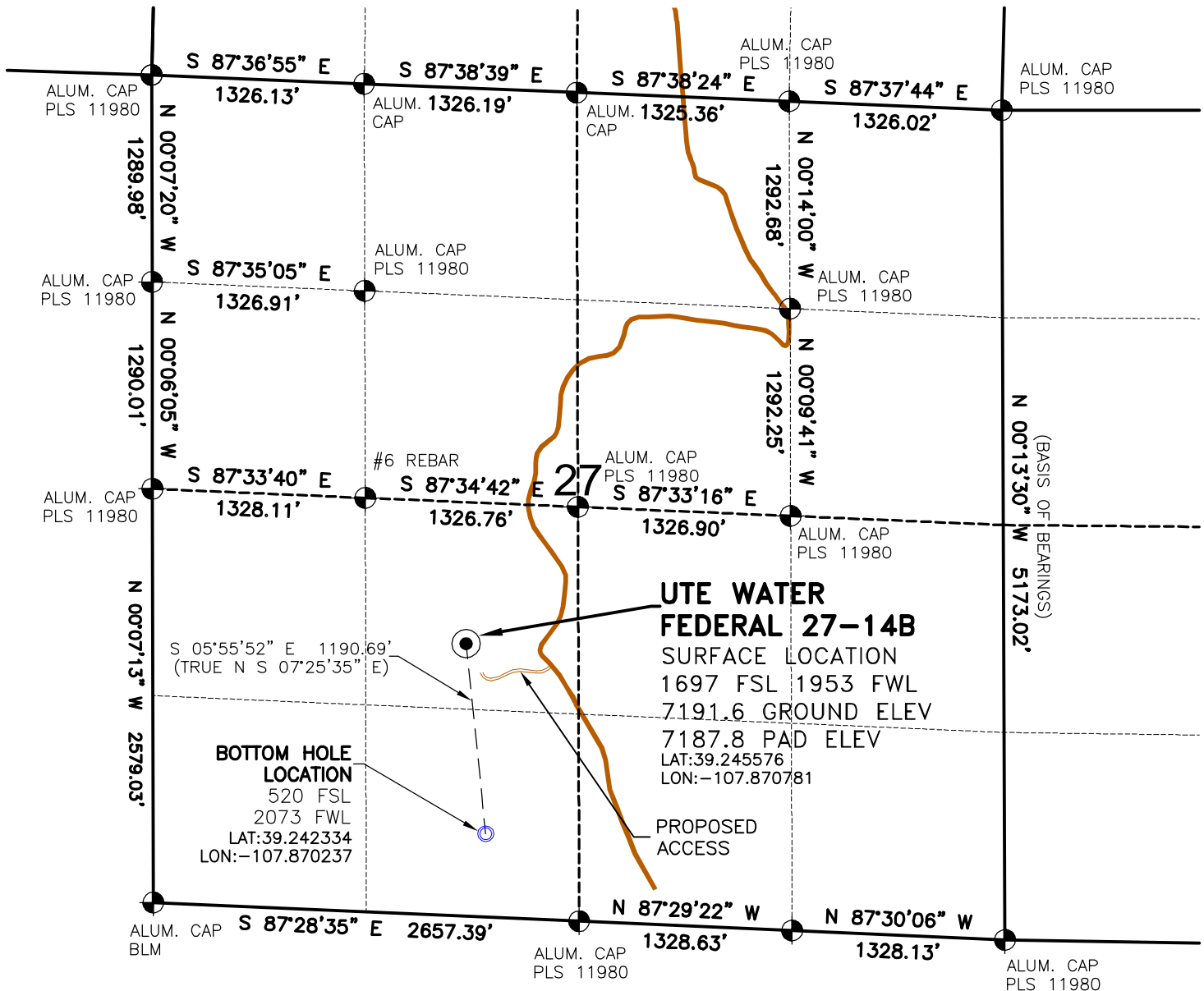


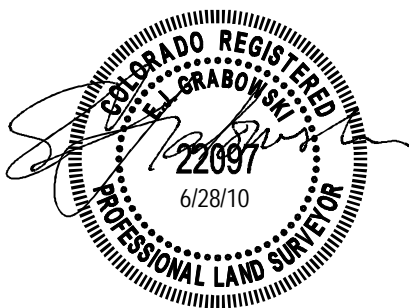
WELL LOCATION MAP

UTE WATER
27-11 PAD



SURVEYOR'S STATEMENT

The undersigned hereby states that the well location shown hereon was staked on the ground based on existing monumentation and/or physical evidence found in the field and is correct to the best of my knowledge, information and belief.



NOTES

- 1.) Horizontal and vertical datum based on Mesa County control point "SN23" with an elevation of 8008.15. NAVD 1988.
 - 2.) All directions, distances, and dimensions shown hereon are based on coordinates from the "Colorado coordinate system of 1983 central zone" (article 52 of title 38, C.R.S.).
 - 3.) All section line dimensions shown hereon are based on field measurements of existing monuments and/or physical evidence found in the field unless otherwise indicated.
 - 4.) Physical features shown hereon are for graphical representation only.
 - 5.) See Form 2A for visible improvements within 400' of wellhead.
 - 6.) Distances to nearest section lines are measured perpendicularly.
 - 7.) This is not a land survey nor land survey plat.
 - 8.) Date of Survey 7/28/08; Date of Drawing 6/28/10. REV 1
- PDOP Reading: 2.4 Instrument Operator: EJJ

GEO SURV

LAND SURVEYING AND MAPPING
520 STACY COURT SUITE "B"
LAFAYETTE, CO. 80026
Ph 303 666 0379 Fx 303 665 6320

OXY USA, INC
UTE WATER FEDERAL 27-14B
SL NE1/4 SW1/4 SEC. 27 T9S R94W
BH SE1/4 SW1/4 SEC. 27 T9S R94W
6th PM MESA COUNTY COLORADO

PAD LAYOUT

UTE WATER
27-11 PAD

VEGETATION
SCRUB BRUSH,
MOUNTAIN SHRUBS,
GRASSES

SURFACE USE
GRAZING
PASTURE

IRRIGATION
VALVE

PROTECT
IRRIGATION
HEAD

DAYLIGHT
LINE

STORMWATER
CONTROL DITCH

PLACE 18" HIGH BERM
FOR STORMWATER
CONTROL

PROPOSED
ACCESS/16'
WIDE TRAVEL
SURFACE

PROPOSED
GATHERING LINE
& PRODUCED
WATERLINE ALONG ROADWAY

PROPOSED DIRECTIONAL ALIGNMENT
UTE WATER FEDERAL 27-14B
S 05°55'52" E 1190.69'

NOTES:

- 1) 10% ALLOWANCE IS MADE FOR SOIL EXPANSION.
- 2) PIT LOCATION & SIZE TO BE DETERMINED AT TIME OF CONSTRUCTION.

PAD 270'X500' ELEV=7187.8'				
DISTURBED AREA=7.1± ACRES				
ESTIMATED DIRT QUANTITIES				
CUTx10%	FILL	PIT	TOPSOIL	EXCESS
54,920	46,160	6,970	8,320	1,790

NOTE: VOLUMES IN CUBIC YARDS. TOPSOIL
INCLUDED IN VOLUMES AT A DEPTH OF 12".
PIT NOT INCLUDED IN TOTAL EXCESS.



GRID

LIMIT OF
DISTURBANCE



Graphic Scale in Feet
1 inch = 100 feet



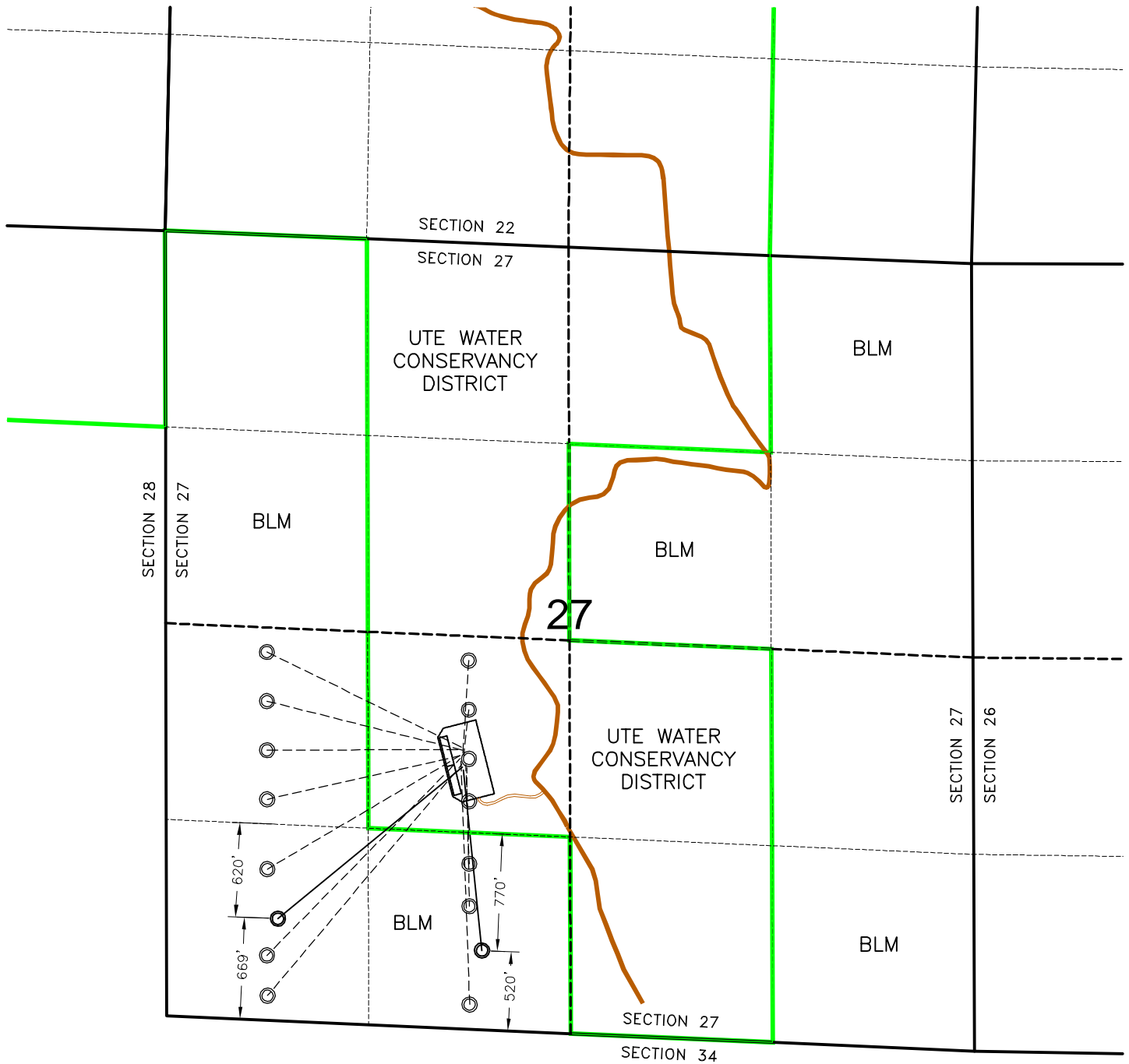
LAND SURVEYING AND MAPPING
LAFAYETTE - WINTER PARK
Ph 303 666 0379 Fx 303 665 6320

OXY USA, INC
UTE WATER FEDERAL 27-14B

SL NE1/4 SW1/4 SEC. 27 T9S R94W
BH SE1/4 SW1/4 SEC. 27 T9S R94W
6th PM MESA COUNTY COLORADO

BOTTOM HOLE SCHEMATIC

UTE WATER
27-11 PAD



— PROPERTY LINE
○ PROPOSED BOTTOM HOLE



0 1000 2000
Graphic Scale in Feet
1 inch = 1000 feet

GEO SURV
LAND SURVEYING AND MAPPING
LAFAYETTE - WINTER PARK
Ph 303 666 0379 Fx 303 665 6320

OXY USA, INC
UTE WATER 27-11 PAD

SECTION 27 T9S R94W 6th PM
MESA COUNTY COLORADO