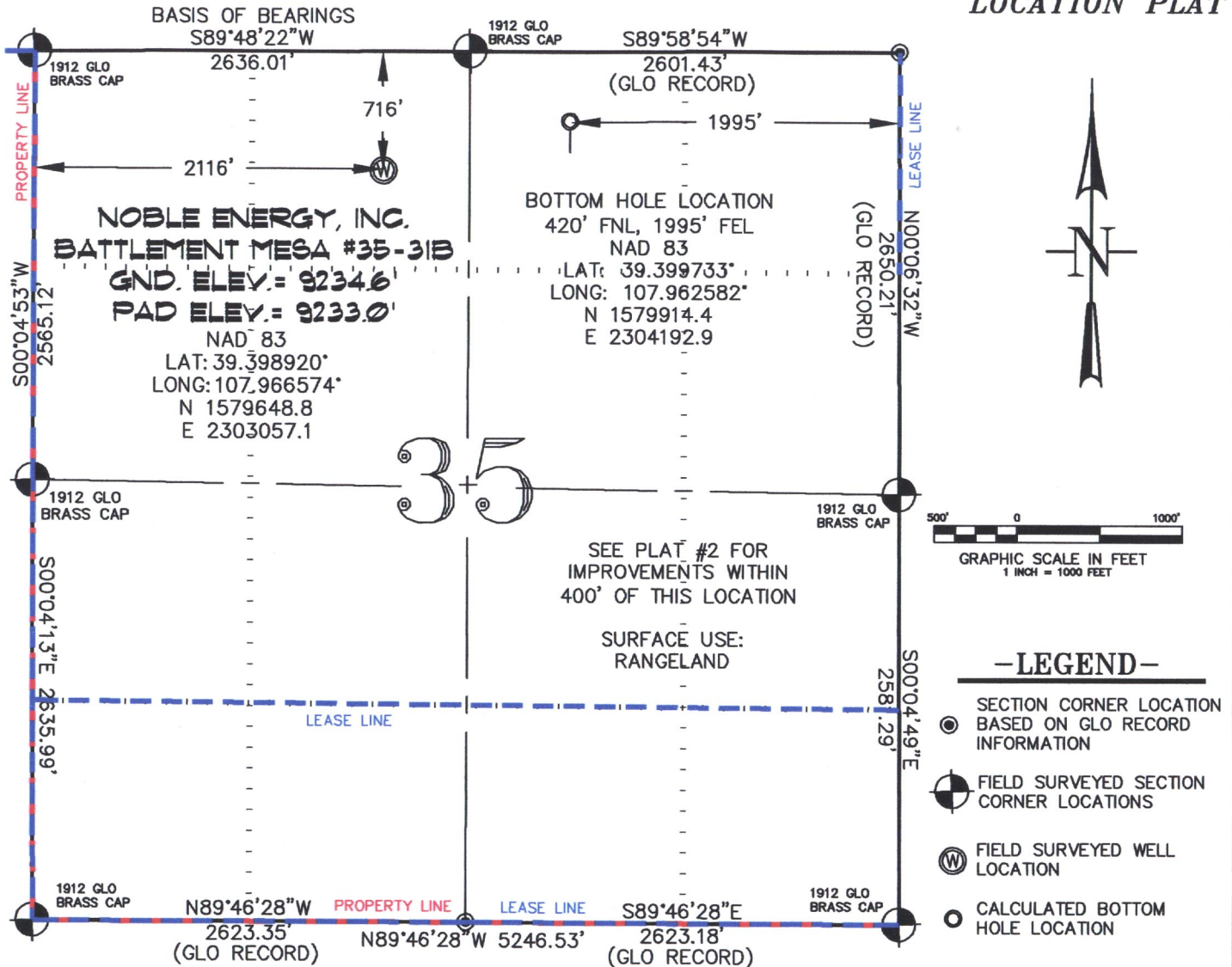


SEC. 35, T. 7 S., R. 95 W. OF THE 6TH P.M.

PLAT #1
LOCATION PLAT



THIS WELL LOCATION PLAT WAS PREPARED FOR NOBLE ENERGY INC. TO LOCATE THE BATTLEMENT MESA #35-31B WELL, 716 FEET FROM THE NORTH LINE AND 2116 FEET FROM THE WEST LINE IN THE NE1/4 NW1/4 OF SECTION 35, T. 7 S., R. 95 W. OF THE 6TH P.M. GARFIELD COUNTY, COLORADO.

REFERENCE NOTES

- 1) T. 7 S., R. 95 W., 6TH P.M. GLO PLAT.
- 2) U.S.G.S. QUAD: PARACHUTE, CO
- 3) ELEVATIONS BASED ON N.A.V.D. 1988
- 4) LATITUDES AND LONGITUDES ARE BASED ON NAD 83, COLORADO CENTRAL ZONE.
- 5) GPS OPERATOR ROBERT WOOD, OBSERVED A PDOP OF 2.0.
- 6) ALL GPS OBSERVATIONS ARE IN COMPLIANCE WITH COGCC RULE NO. 215.
- 7) SURFACE AND BOTTOM HOLE LOCATIONS ARE MEASURED 90° FROM SECTION LINES.

SURVEYOR'S CERTIFICATE

I, George R. Bauer: a Professional Land Surveyor in the State of Colorado do hereby certify that this Survey was made under my direct supervision, and that this Plat represents said Survey.



COLORADO P.L.S. 27925



CONSTRUCTION SURVEYS, INC.
0012 SUNRISE BLVD.
SILT, CO 81652
(970)876-5753

VIEW: 1H

SURVEYED: 08/20/09	SCALE: 1" = 1000'
DRAFTED: 12/04/09	DWG: Noble\2006\BM35C
CHECKED: 12/07/09	SHEET: 1 of 10