

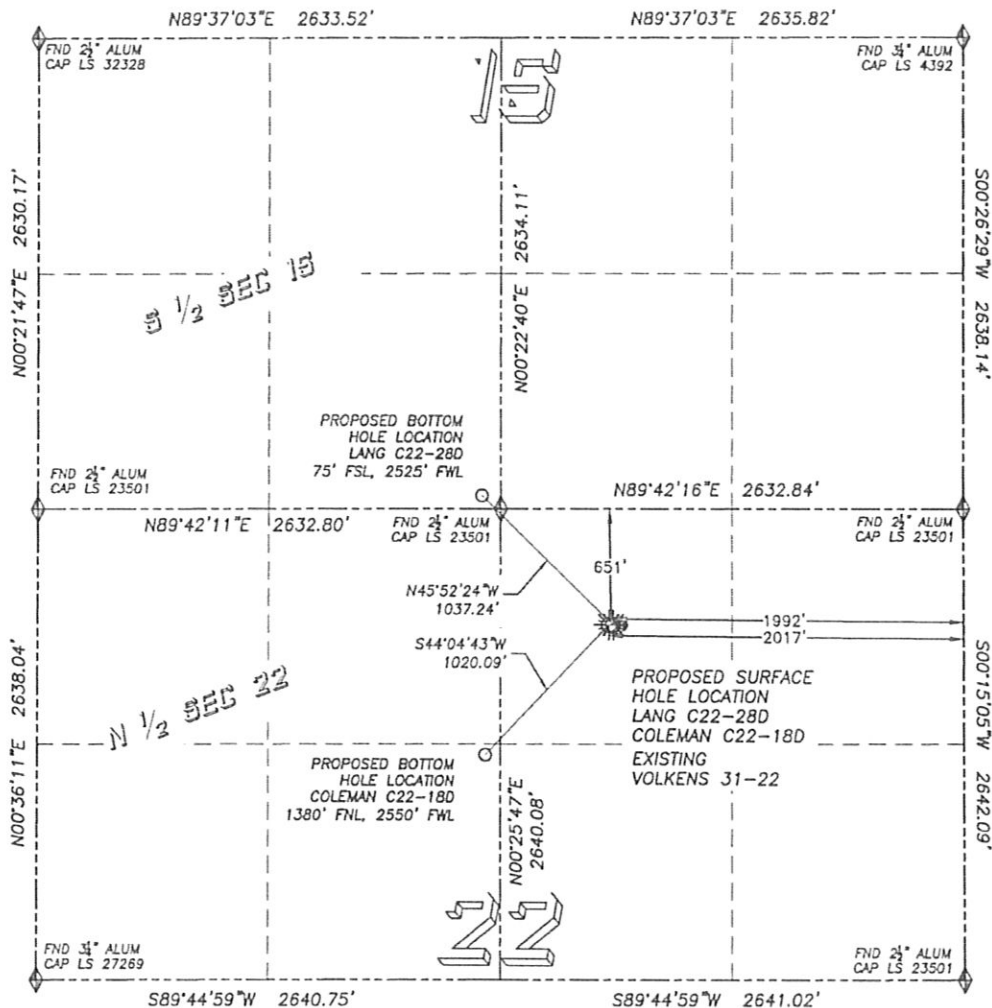
DALEY LAND SURVEYING, INC.

PARKER, CO. 80134

303 953 9841

DIRECTIONAL LAYOUT COLEMAN C22-18D & LANG C22-28D

SECTION 21, TOWNSHIP 4 NORTH, RANGE 64 WEST OF THE 6TH PRINCIPAL MERIDIAN

**NAD 83 LATITUDE AND LONGITUDE****COLEMAN C22-18D SURFACE HOLE:**

LATITUDE: N40.30341°

LONGITUDE: W104.53460°

ELEVATION: 4656'

PDOP 1.3

651' FNL, 2017' FEL

BOTTOM HOLE:

LATITUDE: N40.30140°

LONGITUDE: W104.53715°

1380' FNL, 2550' FWL SEC. 22

NEAREST EXISTING WELL:

VOLKENS 31-22 SURFACE HOLE

LATITUDE: N40.30341°

LONGITUDE: W104.53434°

ELEVATION: 4656'

72' EAST

NAD 83 LATITUDE AND LONGITUDE**LANG C22-28D SURFACE HOLE:**

LATITUDE: N40.30341°

LONGITUDE: W104.53451°

ELEVATION: 4656'

PDOP 1.4

651' FNL, 1992' FEL

BOTTOM HOLE:

LATITUDE: N40.30539°

LONGITUDE: W104.53718°

75' FSL, 2525' FWL SEC. 15

NEAREST EXISTING WELL:

VOLKENS 31-22 SURFACE HOLE

LATITUDE: N40.30341°

LONGITUDE: W104.53434°

ELEVATION: 4656'

47' EAST