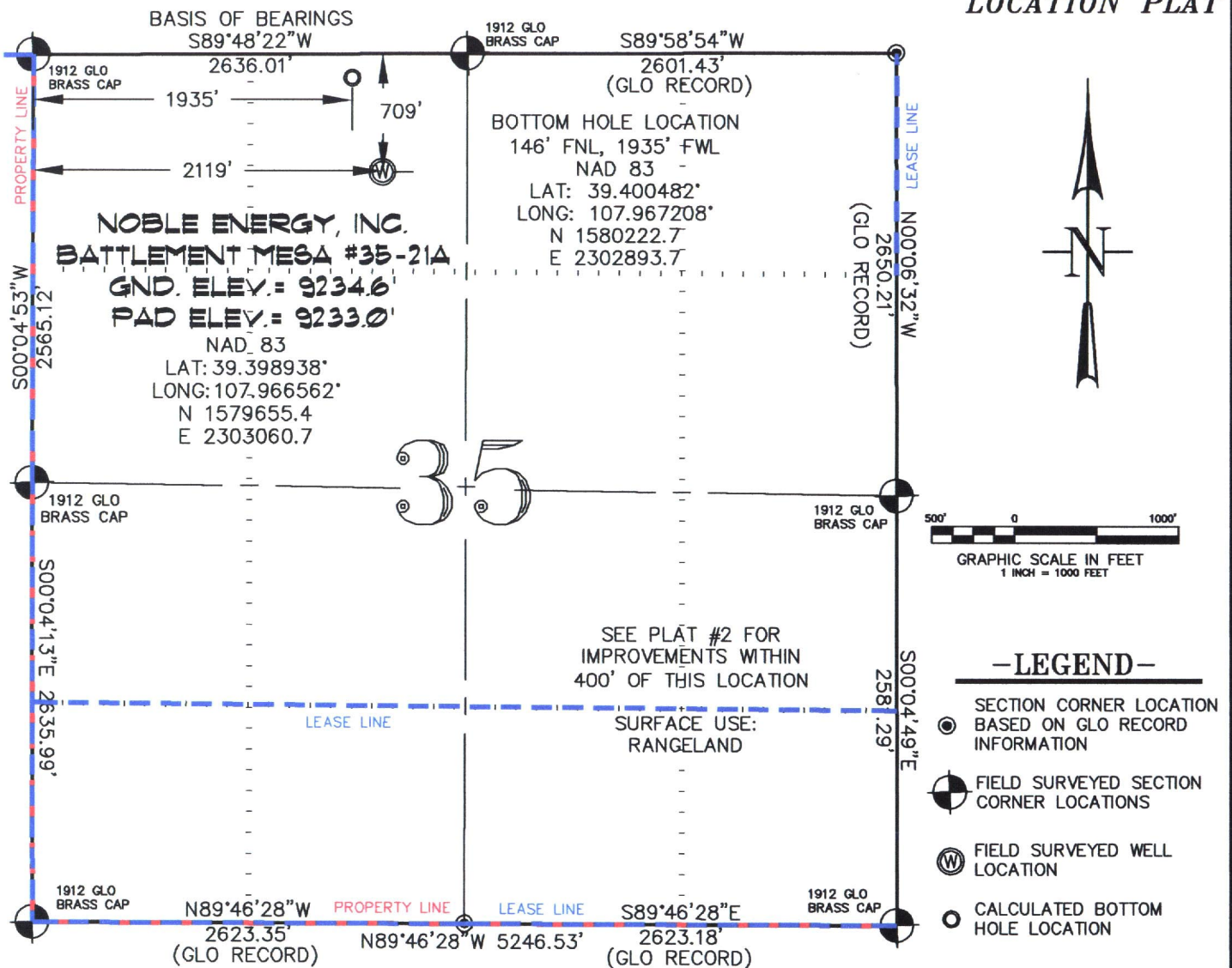


PLAT #1  
LOCATION PLAT

PLAT #1  
LOCATION PLAT



THIS WELL LOCATION PLAT WAS PREPARED FOR NOBLE ENERGY INC. TO LOCATE THE BATTELEMENT MESA #35-21A WELL, 709 FEET FROM THE NORTH LINE AND 2119 FEET FROM THE WEST LINE IN THE NE1/4 NW1/4 OF SECTION 35, T. 7 S., R. 95 W. OF THE 6TH P.M. GARFIELD COUNTY, COLORADO.

## REFERENCE NOTES

- 1) T. 7 S., R. 95 W., 6TH P.M. GLO PLAT.
- 2) U.S.G.S. QUAD: PARACHUTE, CO
- 3) ELEVATIONS BASED ON N.A.V.D. 1988
- 4) LATITUDES AND LONGITUDES ARE BASED ON NAD 83, COLORADO CENTRAL ZONE.
- 5) GPS OPERATOR ROBERT WOOD, OBSERVED A PDOP OF 2.0.
- 6) ALL GPS OBSERVATIONS ARE IN COMPLIANCE WITH COGCC RULE NO. 215.
- 7) SURFACE AND BOTTOM HOLE LOCATIONS ARE MEASURED 90° FROM SECTION LINES.

## SURVEYOR'S CERTIFICATE

I, George R. Bauer: a Professional Land Surveyor in the State of Colorado do hereby certify that this Survey was made under my direct supervision, and that this ~~map~~ represents said Survey.

COLORADO P.L.S. 27925



CONSTRUCTION SURVEYS, INC.  
0012 SUNRISE BLVD.  
SILT, CO 81652  
(970)876-5753

SURVEYED: 04/11/2011
DRAFTED: 12/11/2011
CHECKED: 12/11/2011

VIEW: 1A

SURVEYED: 08/20/09	SCALE: 1" = 1000'
DRAFTED: 12/04/09	DWG: Noble\2006\BM35C
CHECKED: 12/07/09	SHEET: 1 of 10