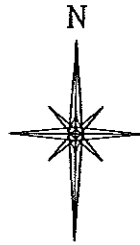


R 98 W



SCALE 1" = 1000'

T 1 S

**FEDERAL RGU
24-23-198**

**ELEVATION:
6542.5'**

BASIS OF ELEVATION: USGS SPOT
ELEVATION LOCATED AT THE SE CORNER,
SECTION 23, T 1 S, R 98 W,
ELEVATION: 6568'

NOTES

NATIVE WOODS, NON-CROP
RANGELAND AND TIMBER
NO IMPROVEMENTS WITHIN 400'
RADIUS OF WELL SITE.

GPS OPERATOR JOHN RICHARDSON
OBSERVED A PDOP OF 1.6.
ALL GPS OBSERVATIONS ARE IN
COMPLIANCE WITH COGCC RULE
No. 215.

LATITUDE (NAD 83)
NORTH 39.946787 DEG.
LONGITUDE (NAD 83)
WEST 108.362602 DEG.
NORTHING (NAD 83)
1782398.93
EASTING (NAD 83)
2197479.36

BASIS OF DATUM

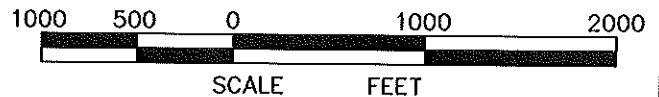
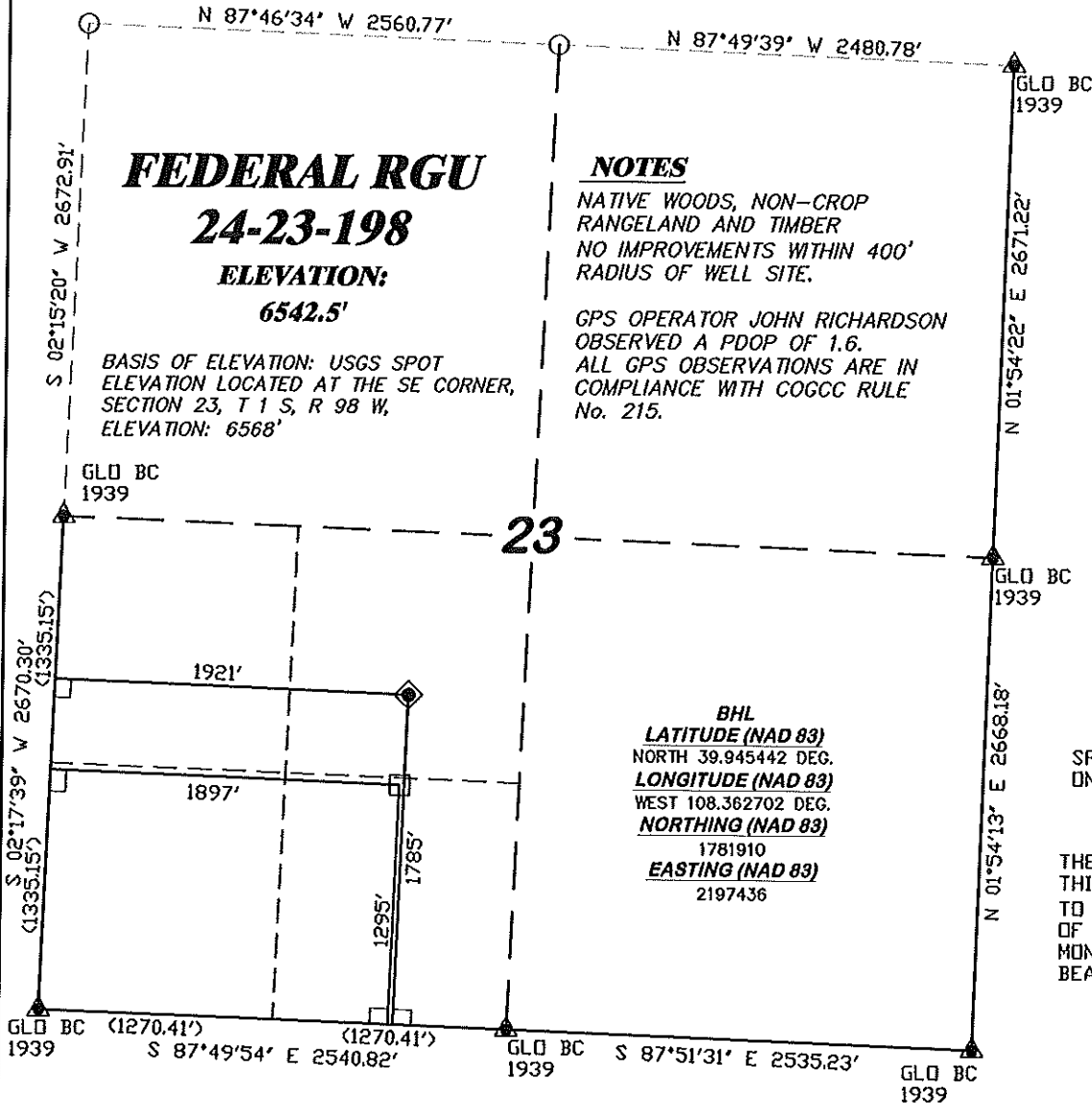
SPCS CO NORTH NAD 27, BASED
ON NGS TRIG. STATION 'BINER'

BASIS OF BEARING

THE BASIS OF BEARINGS FOR
THIS SURVEY IS REFERENCED
TO THE WEST LINE OF THE SW 1/4
OF SECTION 23, BEING
MONUMENTED AS SHOWN AND
BEARING S 02° 17' 39" W.

BHL
LATITUDE (NAD 83)
NORTH 39.945442 DEG.
LONGITUDE (NAD 83)
WEST 108.362702 DEG.
NORTHING (NAD 83)
1781910
EASTING (NAD 83)
2197436

23

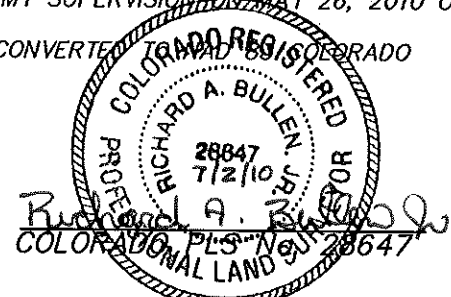


SURVEYOR'S STATEMENT

I, RICHARD A. BULLEN JR., AN EMPLOYEE AND AGENT ON BEHALF OF D.R. GRIFFIN & ASSOCIATES, INC. STATE THE PLAT HEREON IS A CORRECT REPRESENTATION OF A SURVEY MADE UNDER MY SUPERVISION ON MAY 26, 2010 OF THE SHOWN FEDERAL RGU 24-23-198 AS STAKED ON THE GROUND. FIELD SURVEY DATUM IS NAD 27 COLORADO NORTH. VALUES HAVE BEEN CONVERTED TO CENTRAL (X,Y) FOR PURPOSES OF THIS PLAT.

LEGEND

- ◆ WELL LOCATION
- BOTTOM HOLE LOC. (APPROX)
- ▲ PREVIOUSLY FOUND MONUMENT
- CALCULATED CORNER



FEDERAL RGU 23-23-198 PAD



(307) 362-6028 1414 ELK ST., ROCK SPRINGS, WY 82901

**PLAT OF DRILLING LOCATION
FOR**

WILLIAMS PRODUCTION RMT COMPANY

**1785' E/SL & 1921' F/WL, NESW, SECTION 23,
T 1 S, R 98 W, 6TH P.M.
RIO BLANCO COUNTY, CO**

DRAWN: 5/28/10 - DEH

SCALE: 1" = 1000'

REVISED: 7/02/10 - RAB

DRG JOB No. 17486

BHL REVISED

EXHIBIT 1