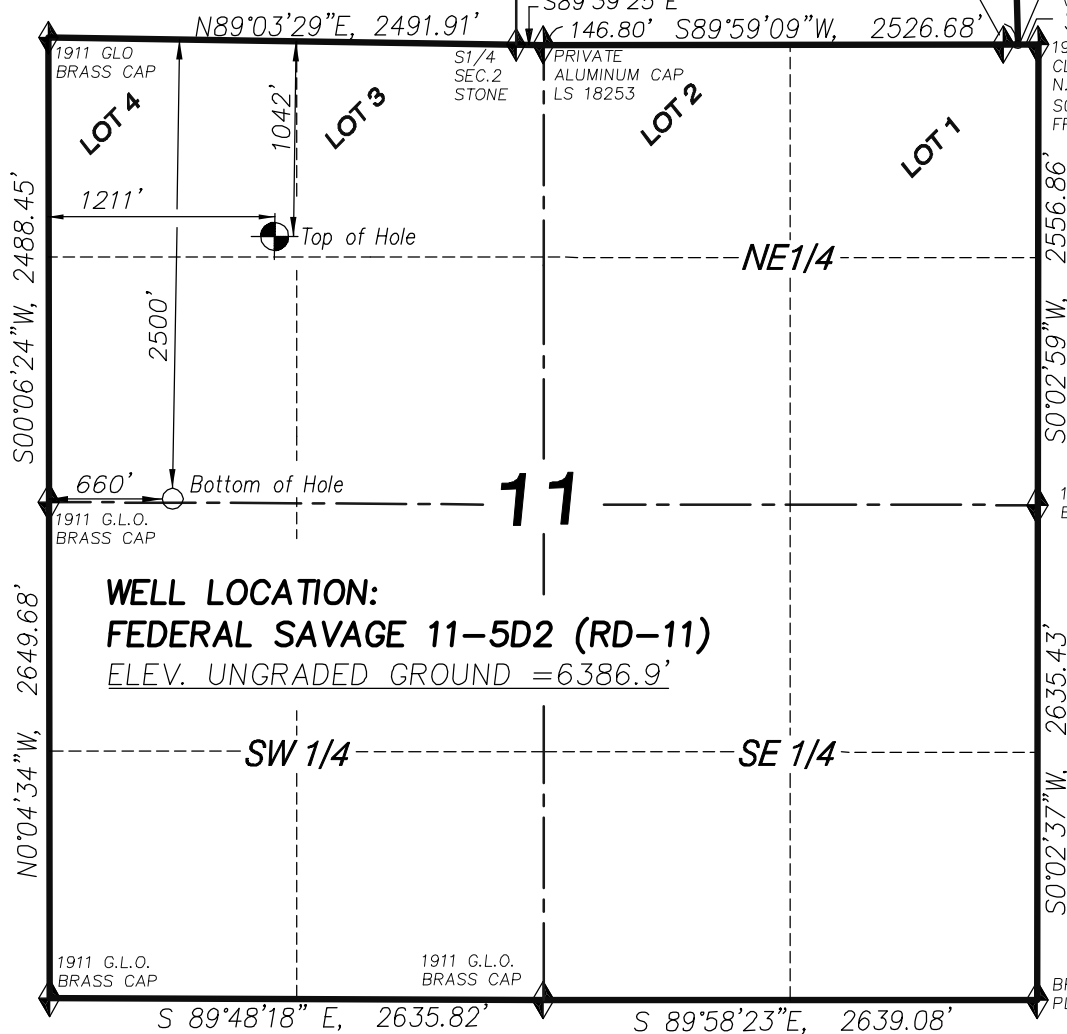


T7S, R94W, 6th P.M.

1911 G.L.O. B.C.
WITNESS CORNER
S89°59'09"W, 1.10 CH.

S.E. CORNER SEC. 2
(CALCULATED)
S 88°49'25" W, 112.97'
1911 G.L.O. BRASS CAP
CLOSING CORNER
N.E. SEC. 11
S01°26'32"W, 1.13'
FROM ACTUAL



WELL LOCATION:
FEDERAL SAVAGE 11-5D2 (RD-11)
ELEV. UNGRADED GROUND = 6386.9'

LEGEND

- ◆ SECTION CORNER LOCATED
- SURFACE LOCATION
- BOTTOM HOLE LOCATION
- RECORD LOCATION OF CORNER

NOTES

1. WELL FOOTAGES ARE MEASURED AT RIGHT ANGLES TO SECTION LINES.
2. BASIS OF BEARING: GEODETIC- BASED ON GPS OBSERVATIONS.
3. ELEVATIONS BASED ON GPS OBSERVATIONS, NAVD 88 (GEOID 03), POST PROCESSED USING NGS OPUS.
4. THE BOTTOM HOLE BEARS S20°41'33"W, 1568' FROM TOP OF HOLE.
5. SEE ADDENDUM (SHEET 1L) FOR ALL VISIBLE IMPROVEMENTS WITHIN 400 FEET OF THE PROPOSED WELLHEAD.
6. CONTROL FOR SURVEY WAS ESTABLISHED USING DIFFERENTIALLY CORRECTED GPS FROM AN OPUS BASED CONTROL NETWORK. WELL LOCATION WAS ESTABLISHED USING NON-GPS CONVENTIONAL METHODS, THEREFORE NO PDOP READING WAS TAKEN.

FEDERAL SAVAGE 11-5D2 (RD-11)
(WELLHEAD LOCATION) NAD 83
LATITUDE = 39.45750° N
LONGITUDE = 107.85922° W
(BOTTOM HOLE LOCATION) NAD 83
LATITUDE = 39.45347° N
LONGITUDE = 107.86117° W

CERTIFICATE OF SURVEYOR

I, TED TAGGART OF FRUITA, COLORADO HEREBY CERTIFY THAT THIS MAP WAS MADE FROM NOTES TAKEN DURING AN ACTUAL SURVEY MADE BY ME OR UNDER MY DIRECTION FOR ENCANA OIL & GAS (USA) INC. AND THAT THIS LOCATION HAS BEEN STAKED ON THE GROUND AS SHOWN HEREON.



906 Main Street
Evanston, Wyoming 82930
Phone No. (307) 789-4545

MAP to ACCOMPANY
APPLICATION for PERMIT to DRILL
EnCana Oil & Gas (USA) Inc.
Federal Savage 11-5D2 (RD-11) Well
NW1/4 NW1/4, SECTION 11
T7S, R94W, 6th P.M.
GARFIELD COUNTY, COLORADO

Location Plat		Scale: 1" = 1000'	SHEET 1c OF 10
Project No.	05-04-25	Date Surveyed: 9/02/09	
Date Drawn:	9/02/09	Latest Revision Date:	