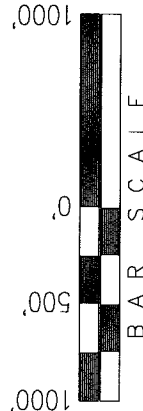


T2S, R97W, 6th P.M.

EXXON MOBIL CORPORATION

WELL LOCATION, FREEDOM UNIT 297-20B9, LOCATED AS SHOWN IN THE NW 1/4 NW 1/4 OF SECTION 20, T2S, R97W, 6th P.M. RIO BLANCO COUNTY, COLORADO.



SECTION CORNERS LOCATED

BASIS OF BEARINGS & BASIS OF ELEVATION

BASIS OF BEARINGS IS A LINE BETWEEN MAGNOLIA & MEYERS TRIANGULATION STATION GRID COORDINATES WHICH IS ASSUMED TO BEAR S82°36'07"E.

BASIS OF ELEVATION IS MAGNOLIA TRIANGULATION STATION LOCATED IN THE NW 1/4 OF SECTION 9, T2S, R96W, 6th P.M. REPORTED FROM THE NATIONAL GEODETIC SURVEY (NAVD 88). ELEVATION IS REPORTED AS BEING 7529 FEET.

NOTES:

1. Well footages are measured at right angles to the Section Lines.
2. Bearings are based on Global Positioning Satellite observations.
3. G.P.S. Operator: T. PETTY, (PDOP) = 2.5

THIS IS TO CERTIFY THAT THE ABOVE IS A TRUE AND CORRECT REPRESENTATION OF THE ACTUAL SURFACE LOCATION OF THE WELL AS SHOWN ON THIS PLAN, PREPARED UNDER MY SUPERVISION AND THAT I AM A LICENSED SURVEYOR OF THE STATE OF COLORADO. I HAVE KNOWN THE SURVEYER AND THE SURVEYOR'S ASSISTANT AND BELIEVE THEM TO BE COMPETENT AND CORRECT TO THE BEST OF MY KNOWLEDGE AND BELIEF.

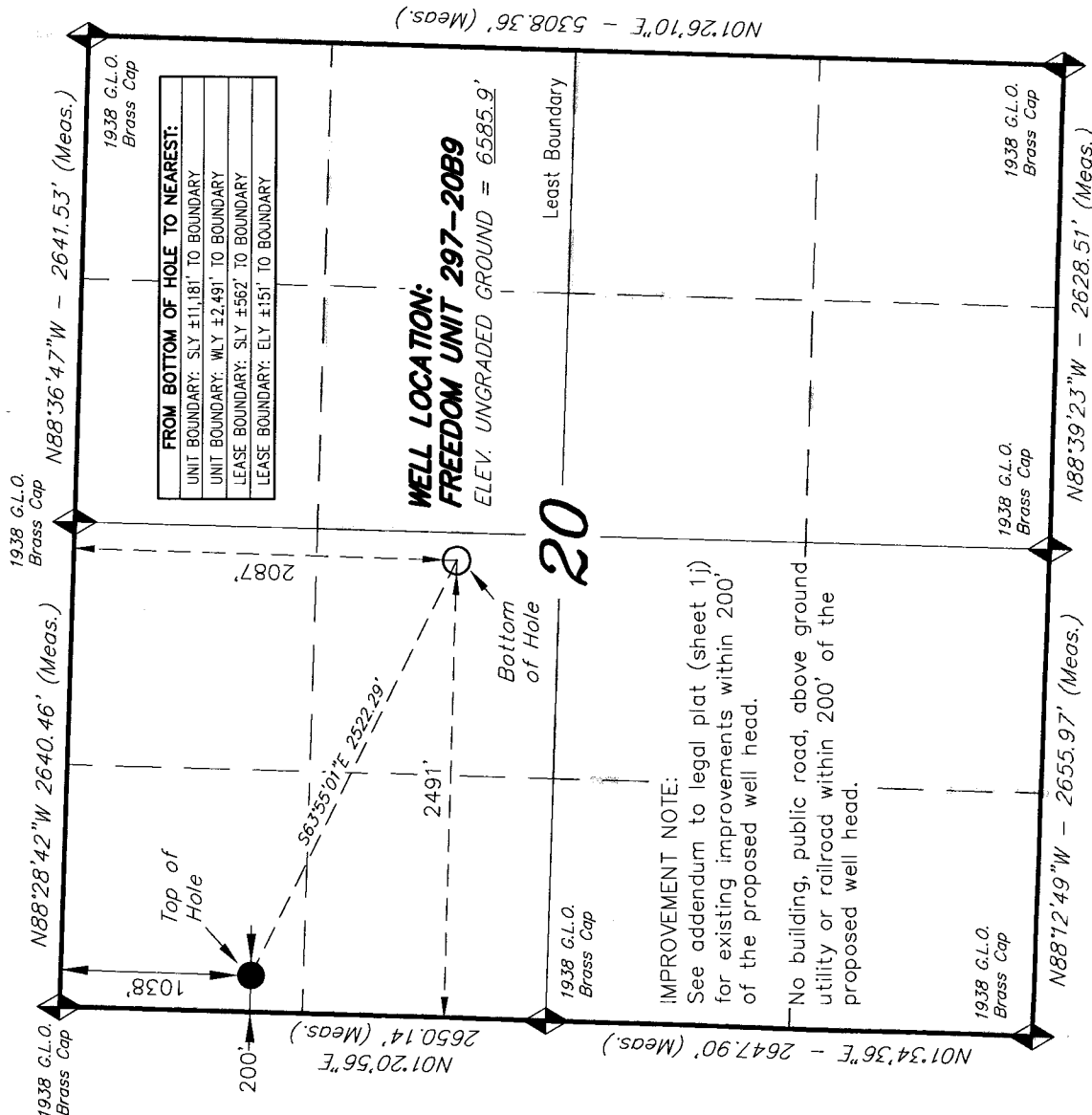
30125

REGISTERED LAND SURVEYOR
REGISTRATION NO. 11100
STATE OF COLORADO

TRI STATE LAND SURVEYING & CONSULTING

180 NORTH VERNAL AVE. - VERNAL, UTAH 84078
(435) 781-2501

DATE SURVEYED: 1-18-06	SURVEYED BY: T.P.	SHEET 1i OF 8
DATE DRAWN: 3-15-06	DRAWN BY: R.V.C.	
REVISED: 08-22-06 D.COX	SCALE: 1" = 1000'	



CO-NORTH NAD 83 (SURFACE LOCATION)		CO-NORTH NAD 83 (BOTTOM HOLE)		FROM SURFACE LOCATION TO NEAREST:	
LATITUDE = 39°51'58.75" (39.866318)		LATITUDE = 39°51'48.50" (39.863473)		TOWN/COMMUNITY: 24.3 MILES NE TO WEEKER	
LONGITUDE = 108°18'52.45" (108.314570)		LONGITUDE = 108°18'22.97" (108.306381)		UNIT BOUNDARY: ±12.222' SLY TO BOUNDARY	
STATE PLANE COORDINATES		STATE PLANE COORDINATES		UNIT BOUNDARY: ±200' WLY TO BOUNDARY	
N: = 1206687.622	E: = 2210075.229	N: = 1205579.023	E: = 2212339.845	LEASE BOUNDARY: ±2.936' SLY TO BOUNDARY	
CO-NORTH NAD 27 (SURFACE LOCATION)		CO-NORTH NAD 27 (BOTTOM HOLE)		LEASE BOUNDARY: ±200' WLY TO BOUNDARY	
LATITUDE = 39°51'58.84" (39.866346)		LATITUDE = 39°51'48.60" (39.863501)		EXISTING WELL: ±4.534' SLY TO #1 BRENNEN	
LONGITUDE = 108°18'50.13" (108.313926)		LONGITUDE = 108°18'20.66" (108.305738)			
STATE PLANE COORDINATES		STATE PLANE COORDINATES			
N: = 206688.572	E: = 1210235.405	N: = 205580.000	E: = 1212500.000		