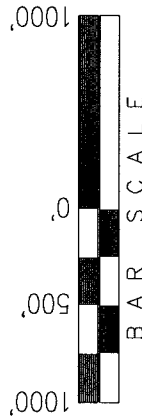



EXXON MOBIL CORPORATION

WELL LOCATION, FREEDOM UNIT 297-20B8,
LOCATED AS SHOWN IN THE NW 1/4 NW 1/4
OF SECTION 20, T2S, R97W, 6th P.M. RIO
BLANCO COUNTY, COLORADO.



 = SECTION CORNERS LOCATED

BASIS OF BEARINGS & BASIS OF ELEVATION

BASIS OF BEARINGS IS A LINE BETWEEN MAGNOLIA & MEYERS TRIANGULATION
STATION GRID COORDINATES WHICH IS ASSUMED TO BEAR S82°36'07"E.

BASIS OF ELEVATION IS MAGNOLIA TRIANGULATION STATION LOCATED IN THE NW 1/4 OF SECTION 9, T2S, R96W, 6th P.M. REPORTED FROM THE NATIONAL GEODETIC SURVEY (NAVD 88). ELEVATION IS REPORTED AS BEING 7529 FEET.

NOTES:

1. Well footages are measured at right angles to the Section Lines.
2. Bearings are based on Global Positioning Satellite observations.
3. G.P.S. Operator: T. PETTY, (PDOP) = 2.5

THIS IS TO CERTIFY THAT THE ABOVE STATED INVESTIGATION WAS PREPARED FROM FIELD NOTES OF ACTUAL SURVEYS MADE BY ME, OR UNDER MY SUPERVISION AND THAT THE SAME ARE TRUE AND CORRECT TO THE BEST OF MY KNOWLEDGE AND BELIEF.

REGISTERED LAND SURVEYOR
REGISTRATION NO. 2500
STATE OF COLORADO

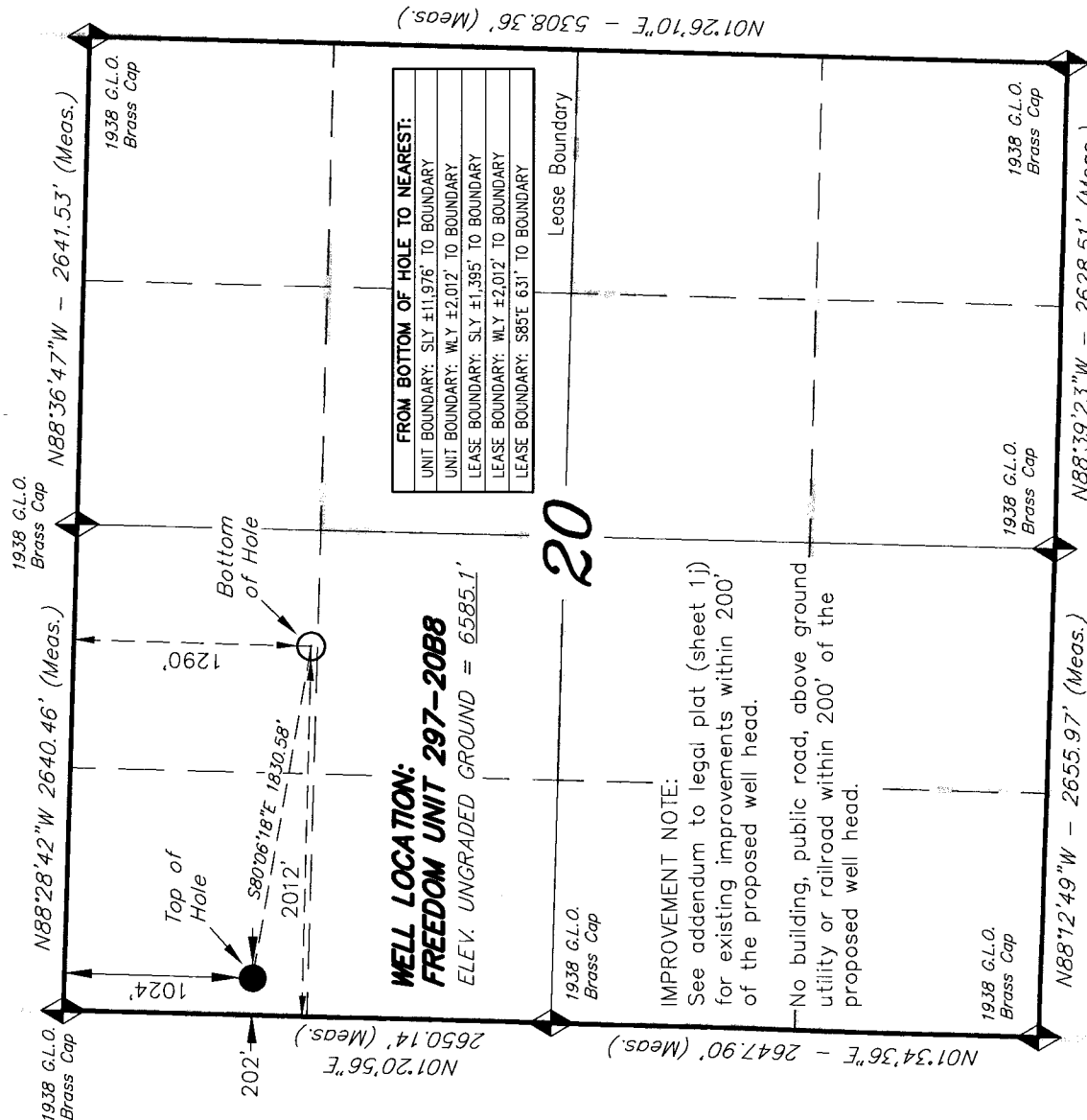
TRI STATE LAND SURVEYING & CONSULTING

180 NORTH VERNAL AVE. - VERNAL, UTAH 84078
(435) 781-2501

DATE SURVEYED: 1-18-06	SURVEYED BY: T.P.	SHEET
---------------------------	-------------------	-------

DATE DRAWN: 3 15 06	DRAWN BY: R.V.C.
------------------------	------------------

REVISED: 01-22-07 D COX
SCALE: 1" = 1000'
OF 8



CO--NORTH NAD 83 (SURFACE LOCATION)		CO--NORTH NAD 83 (BOTTOM HOLE)		FROM SURFACE LOCATION TO NEAREST:
LATITUDE = 39°51'58.89" (39.866359)		LATITUDE = 39°51'56.35" (39.865653)		TOWN/COMMUNITY: 24.3 MILES NE TO MECKER
LONGITUDE = 108°18'52.43" (108.314565)		LONGITUDE = 108°18'29.20" (108.308110)		UNIT BOUNDARY: ±12,237' SLY TO BOUNDARY
STATE PLANE COORDINATES		STATE PLANE COORDINATES		UNIT BOUNDARY: ±202' WLY TO BOUNDARY
N: = 1206702.495 E: = 2210077.130		N: = 1206388.034 E: = 2211879.843		LEASE BOUNDARY: ±2,951' SLY TO BOUNDARY
CO--NORTH NAD 27 (SURFACE LOCATION)		CO--NORTH NAD 27 (BOTTOM HOLE)		
LATITUDE = 39°51'58.99" (39.866387)		LATITUDE = 39°51'56.45" (39.865681)		LEASE BOUNDARY: ±202' WLY TO BOUNDARY
LONGITUDE = 108°18'50.12" (108.313921)		LONGITUDE = 108°18'26.88" (108.307467)		EXISTING WELL: ±4,536' SLY TO #1 BRENNEN
STATE PLANE COORDINATES		STATE PLANE COORDINATES		
N: = 206703.445 E: = 1210237.306		N: = 206389.000 E: = 1212040.000		