

# T2S, R97W, 6th P.M.

## EXXON MOBIL CORPORATION

WELL LOCATION, FREEDOM UNIT 297-20B7, LOCATED AS SHOWN IN THE NW 1/4 NW 1/4 OF SECTION 20, T2S, R97W, 6th P.M. RIO BLANCO COUNTY, COLORADO.



### BASIS OF BEARINGS & BASIS OF ELEVATION

BASIS OF BEARINGS IS A LINE BETWEEN MAGNOLIA & MEYERS TRIANGULATION STATION GRID COORDINATES WHICH IS ASSUMED TO BEAR S82°36'07"E.

BASIS OF ELEVATION IS MAGNOLIA TRIANGULATION STATION LOCATED IN THE NW 1/4 OF SECTION 9, T2S, R96W, 6th P.M. REPORTED FROM THE NATIONAL GEODETIC SURVEY (NAVD 88). ELEVATION IS REPORTED AS BEING 7529 FEET.

### NOTES:

1. Well footages are measured at right angles to the Section Lines.
2. Bearings are based on Global Positioning Satellite observations.
3. G.P.S. Operator: T. PETTY, (PDOP) = 2.5

THIS IS TO CERTIFY THAT THE ABOVE IS A TRUE AND CORRECT COPY OF THE ORIGINAL SURVEY MAP PREPARED FROM FIELD NOTES OF ACTUAL SURVEY MADE BY ME OR UNDER MY SUPERVISION AND THAT THE SAME IS TRUE AND CORRECT TO THE BEST OF MY KNOWLEDGE AND BELIEF.

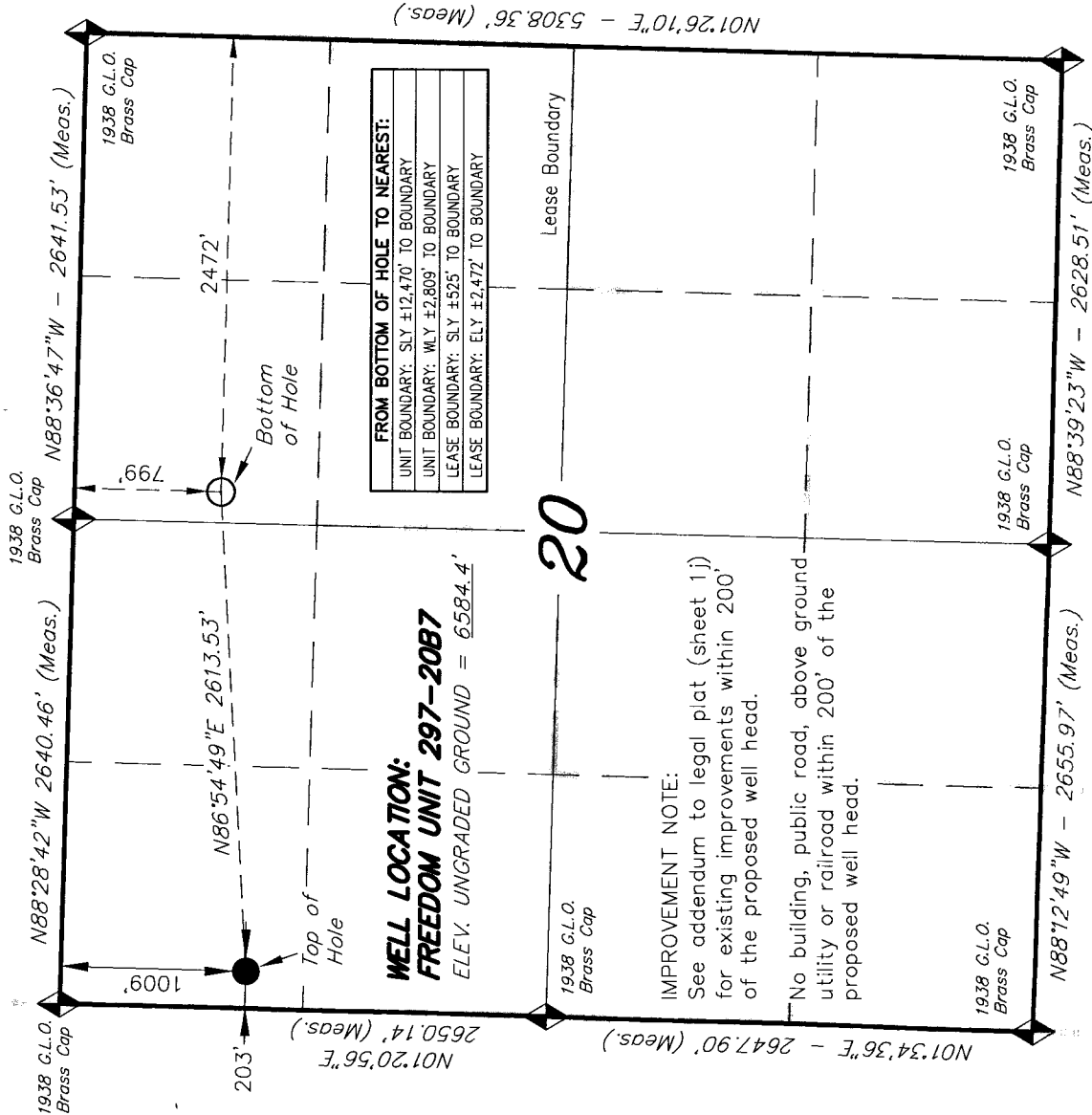
# 30125

REGISTERED LAND SURVEYOR  
REGISTRATION NO. 11180  
STATE OF COLORADO

## TRI STATE LAND SURVEYING & CONSULTING

180 NORTH VERNAL AVE. - VERNAL, UTAH 84078  
(435) 781-2501

DATE SURVEYED: 1-18-06	SURVEYED BY: T.P.	SHEET <b>1g</b> OF 8
DATE DRAWN: 3-15-06	DRAWN BY: R.V.C.	
REVISED: 01-22-07 D.COX	SCALE: 1" = 1000'	



CO-NORTH NAD 83 (SURFACE LOCATION)		CO-NORTH NAD 83 (BOTTOM HOLE)		FROM SURFACE LOCATION TO NEAREST:	
LATITUDE = 39°51'59.04" (39.866400)		LATITUDE = 39°52'01.25" (39.867013)		TOWN/COMMUNITY: 24.3 MILES NE TO MEEKER	
LONGITUDE = 108°18'52.41" (108.314559)		LONGITUDE = 108°18'19.03" (108.305286)		UNIT BOUNDARY: ±12,252' SLY TO BOUNDARY	
STATE PLANE COORDINATES		STATE PLANE COORDINATES		UNIT BOUNDARY: ±203' WLY TO BOUNDARY	
N: = 1206717.369	E: = 2210079.031	N: = 1206858.032	E: = 2212687.854	LEASE BOUNDARY: ±2,966' SLY TO BOUNDARY	
CO-NORTH NAD 27 (SURFACE LOCATION)		CO-NORTH NAD 27 (BOTTOM HOLE)		LEASE BOUNDARY: ±203' WLY TO BOUNDARY	
LATITUDE = 39°51'59.14" (39.866428)		LATITUDE = 39°52'01.35" (39.867040)		EXISTING WELL: ±4,538' SLY TO #1 BRENNEN	
LONGITUDE = 108°18'50.10" (108.313916)		LONGITUDE = 108°18'16.71" (108.304643)			
STATE PLANE COORDINATES		STATE PLANE COORDINATES			
N: = 206718.319	E: = 1210239.207	N: = 206859.000	E: = 1212848.000		