

# ENCANA OIL & GAS (USA) INC

## WELL PAD INTERFERENCE PLAT WELL PAD (C160U)

Section 16, T8S, R96W, 6th P.M.

### TOP HOLE FOOTAGES

KEINATH FEDERAL 17-11H (C160U)  
588' FNL & 2530' FWL

KEINATH FEDERAL 17-11AH (C160U)  
568' FNL & 2530' FWL

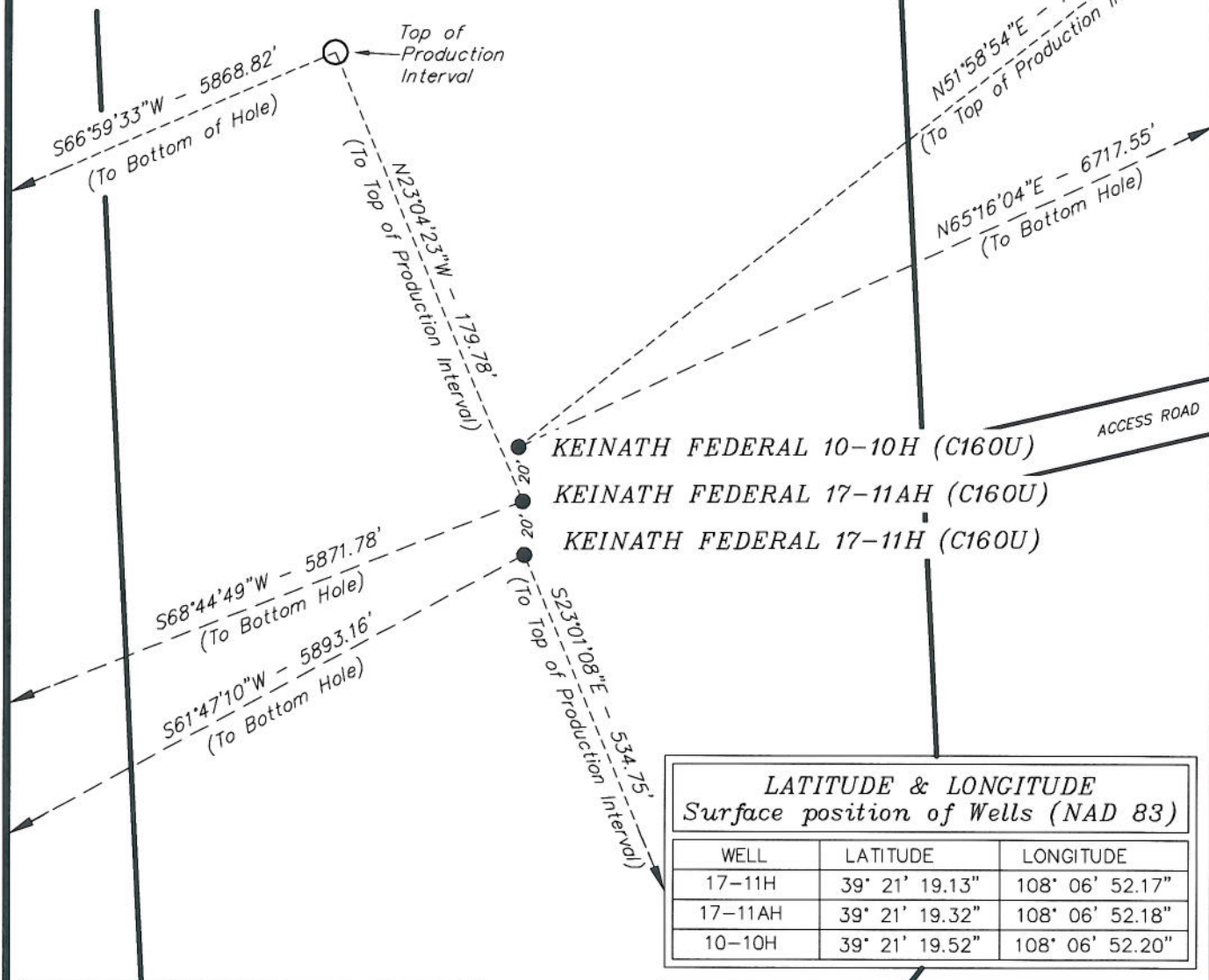
KEINATH FEDERAL 10-10H (C160U)  
548' FNL & 2529' FWL

### BOTTOM HOLE FOOTAGES

KEINATH FEDERAL 17-11H (C160U)  
2027' FSL & 2539' FWL

KEINATH FEDERAL 17-11AH (C160U)  
2681' FSL & 2267' FWL

KEINATH FEDERAL 10-10H (C160U)  
2163' FSL & 2012' FEL



### LATITUDE & LONGITUDE Surface position of Wells (NAD 83)

WELL	LATITUDE	LONGITUDE
17-11H	39° 21' 19.13"	108° 06' 52.17"
17-11AH	39° 21' 19.32"	108° 06' 52.18"
10-10H	39° 21' 19.52"	108° 06' 52.20"

### RELATIVE COORDINATES From top hole to bottom hole

WELL	NORTH	EAST
17-11H	-2,786'	-5,193'
17-11AH	-2,128'	-5,472'
10-10H	2,810'	6,101'

**Note:**  
Bearings are  
based on G.P.S.  
observations.

### LATITUDE & LONGITUDE Bottom of hole position (NAD 83)

WELL	LATITUDE	LONGITUDE
17-11H	39° 20' 51.60"	108° 07' 58.26"
17-11AH	39° 20' 58.29"	108° 08' 01.83"
10-10H	39° 21' 47.27"	108° 05' 34.53"

SURVEYED BY: L.D.V. DATE SURVEYED: 07-11-06  
DRAWN BY: F.T.M. DATE DRAWN: 10-10-06  
SCALE: 1" = 60' REVISED: L.C.S. 06-28-10

**Tri State**  
Land Surveying, Inc.  
(435) 781-2501  
180 NORTH VERNAL AVE. VERNAL, UTAH 84078

SHEET  
3  
OF 11

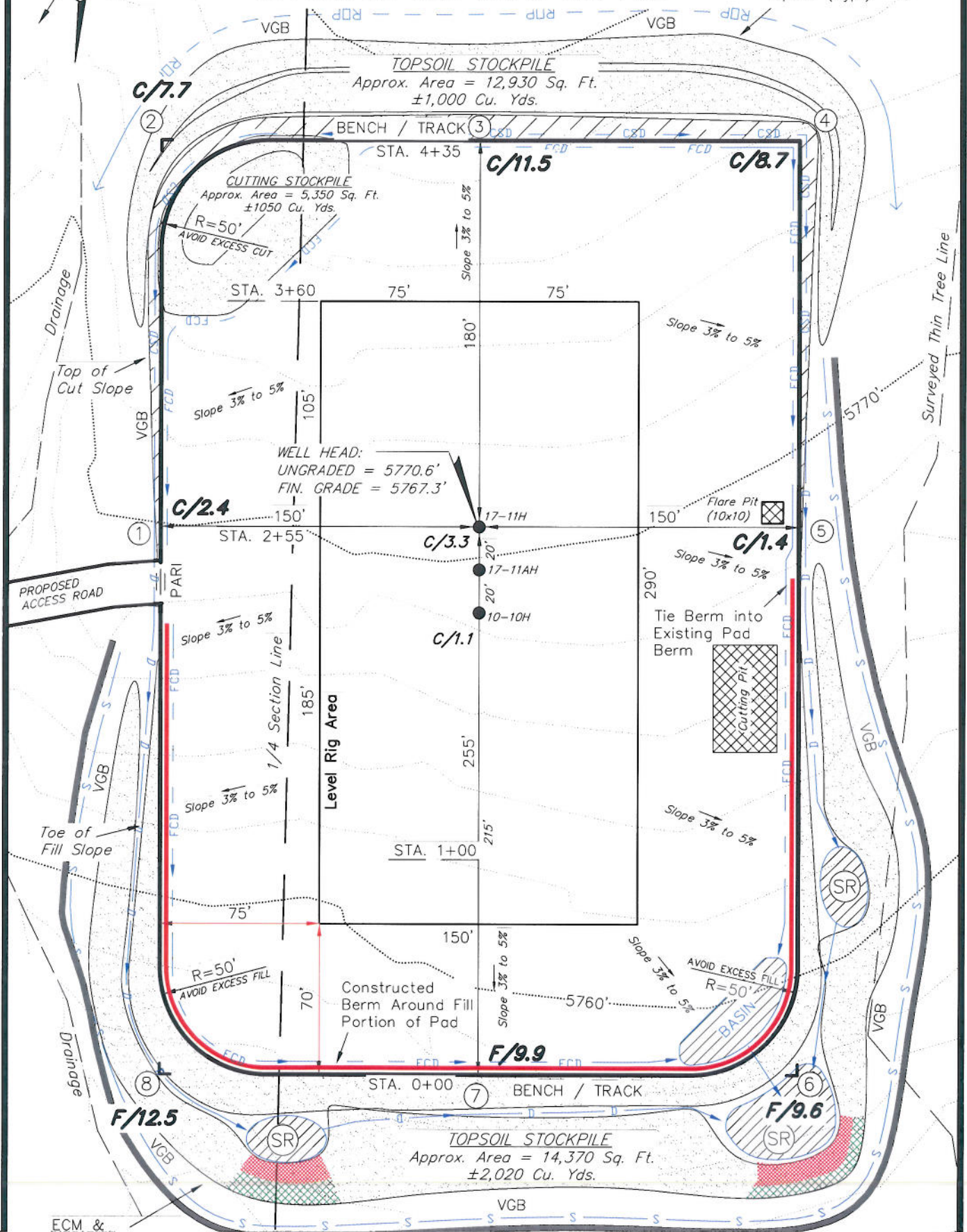
# ENCANA OIL & GAS (USA) INC

## CONSTRUCTION LAYOUT DRAWING CUT SHEET

### WELL PAD (C160U)

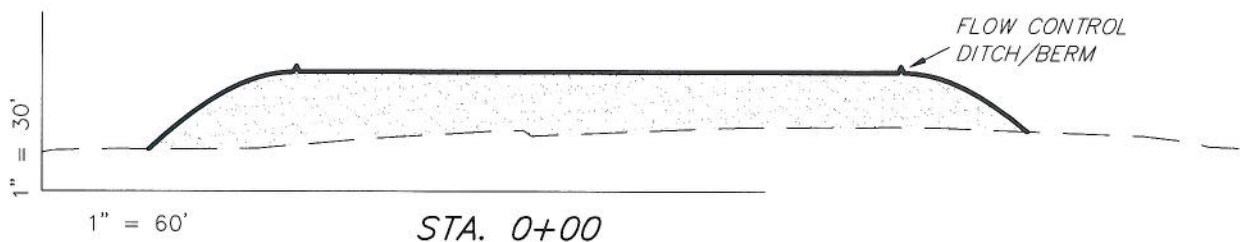
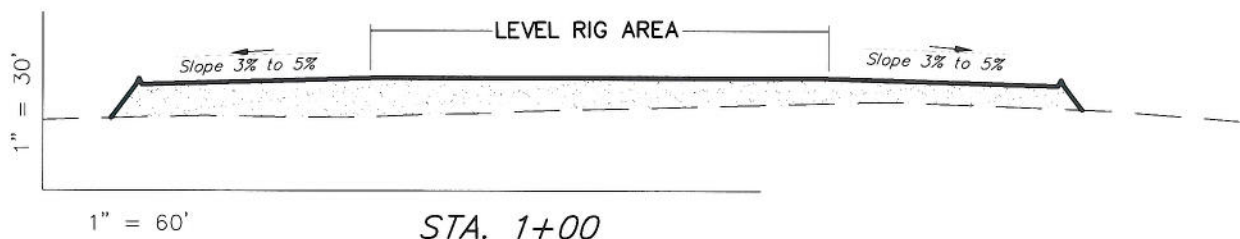
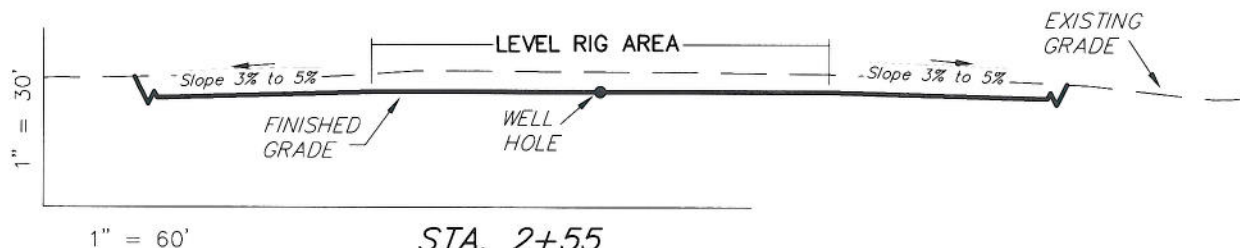
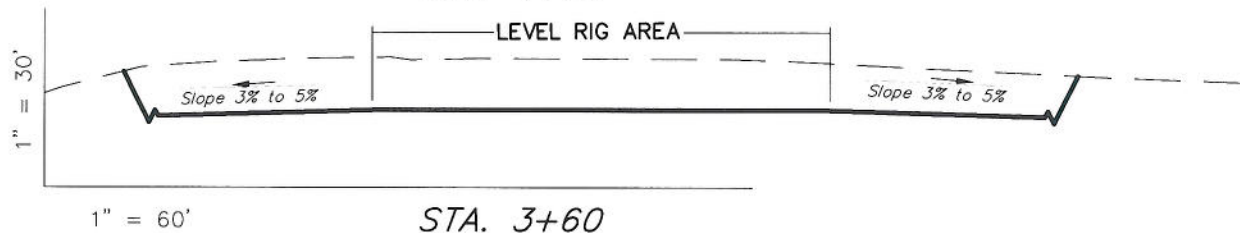
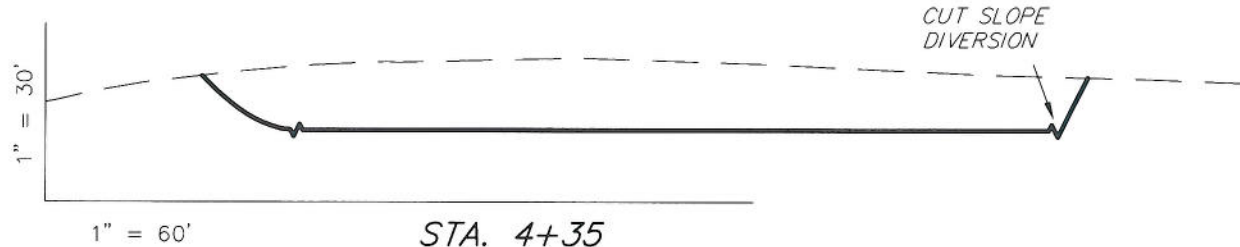
Section 16, T8S, R96W, 6th P.M.

ECM & Flexterra  
Topsoil (Typ.) 5776'





**ENCANA OIL & GAS (USA) INC**  
**CONSTRUCTION LAYOUT DRAWING**  
**CROSS SECTIONS**  
**WELL PAD (C160U)**



NOTE:  
 UNLESS OTHERWISE NOTED  
 CUT SLOPES ARE AT 1:1  
 FILL SLOPES ARE AT 1.5:1

**ESTIMATED EARTHWORK QUANTITIES**  
 (No Shrink or swell adjustments have been used)  
 (Expressed in Cubic Yards)

ITEM	CUT	FILL	EXCESS	6" TOPSOIL
PAD	13,460	13,450	10	Topsoil is not included in Pad Cut
TOTALS	13,460	13,450	10	2,630

SURVEYED BY: C.D.S. DATE SURVEYED: 06-25-10  
 DRAWN BY: F.T.M. DATE DRAWN: 06-28-10  
 SCALE: 1" = 60' REVISED:

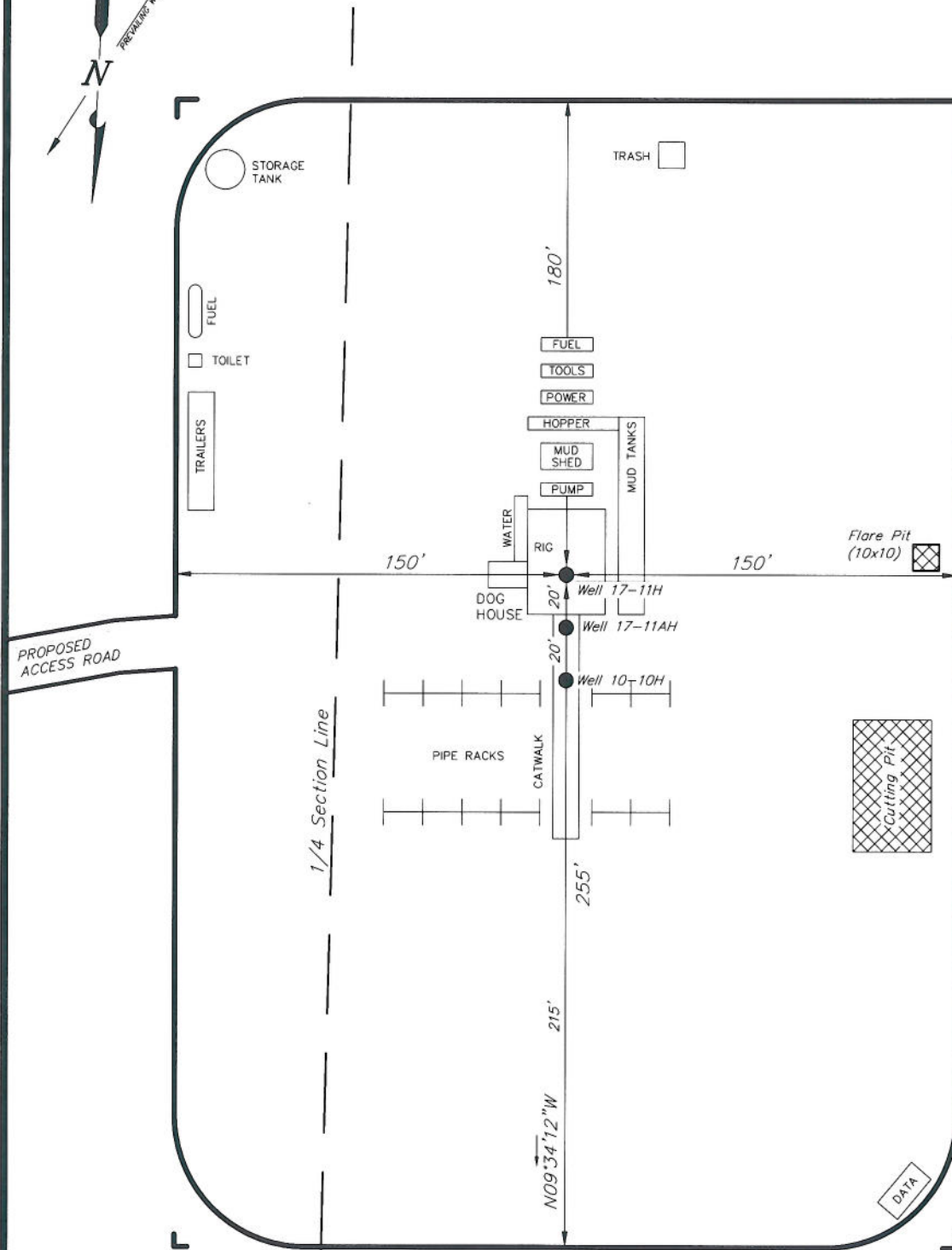
**Tri State**  
 Land Surveying, Inc.  
 180 NORTH VERNAL AVE. VERNAL, UTAH 84078  
 (435) 781-2501

**SHEET**  
**5**  
**OF 11**

# ENCANA OIL & GAS (USA) INC

## TYPICAL RIG LAYOUT

### WELL PAD (C160U)



Note:  
Flare pit is to be located at least 100' from well head.

SURVEYED BY: C.D.S.	DATE SURVEYED: 06-25-10
DRAWN BY: F.T.M.	DATE DRAWN: 06-28-10
SCALE: 1" = 60'	REVISED:

**Tri State**  
Land Surveying, Inc.  
180 NORTH VERNAL AVE. VERNAL, UTAH 84078  
(435) 781-2501

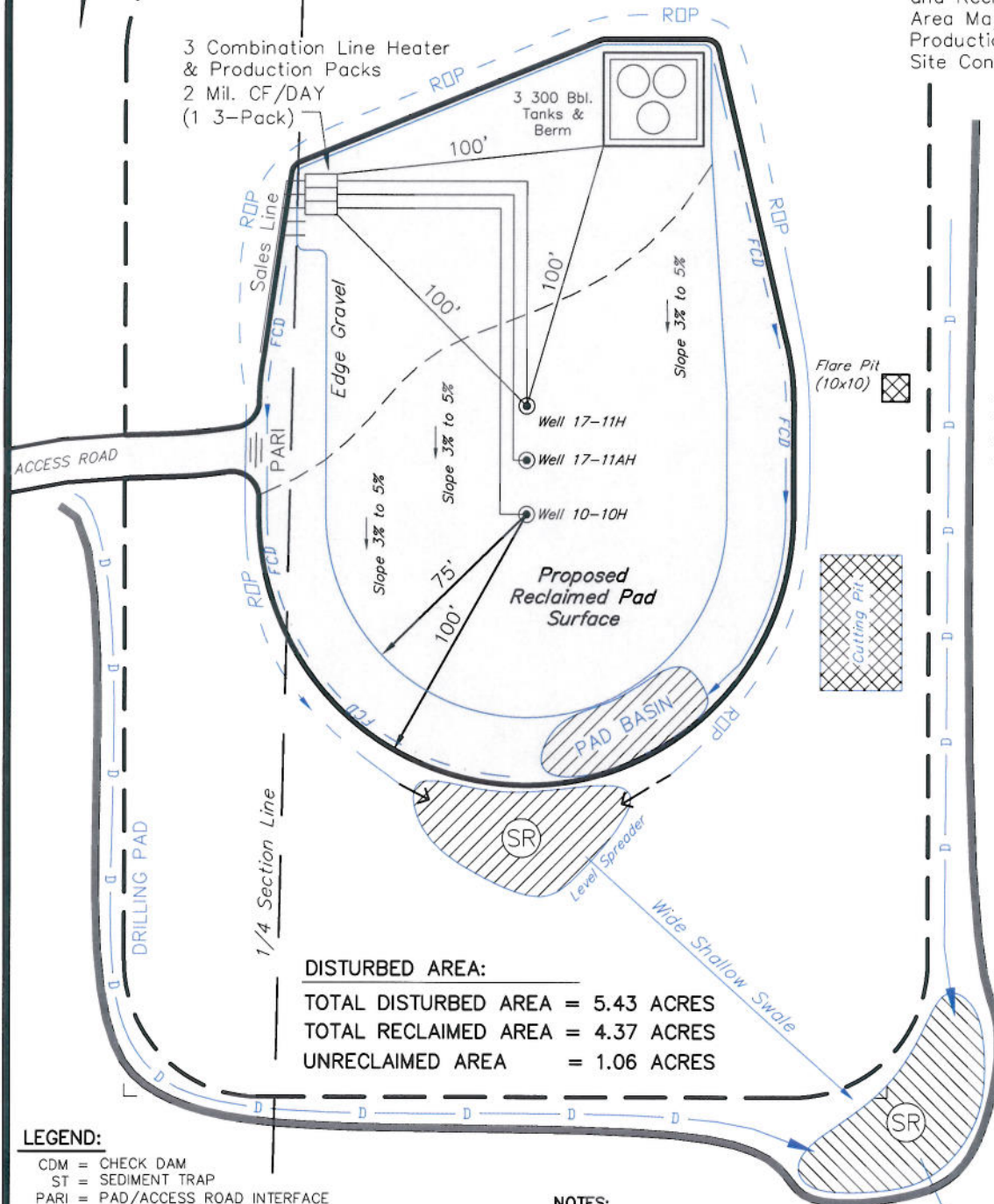
SHEET  
**6**  
OF 11

# ENCANA OIL & GAS (USA) INC

## PRODUCTION SCHEMATIC & RECLAMATION

### WELL PAD (C160U)

Note:  
Actual Equipment Layout  
and Reclaimed Pad Surface  
Area May Change do to  
Production Requirements or  
Site Conditions.



Note:  
Flare pit is to be  
located at least  
100' from well head.

#### DISTURBED AREA:

TOTAL DISTURBED AREA = 5.43 ACRES  
TOTAL RECLAIMED AREA = 4.37 ACRES  
UNRECLAIMED AREA = 1.06 ACRES

#### LEGEND:

CDM = CHECK DAM  
ST = SEDIMENT TRAP  
PARI = PAD/ACCESS ROAD INTERFACE  
SR = SEDIMENT RESERVOIR  
R.O.P. = RUN-ON PROTECTION  
— = PERIMETER CONTROL (WATTLES)  
CSD = CUT SLOPE DIVERSION (BERM TOE OF CUT SLOPE)  
D = FILL DIVERSION TO SEDIMENT TRAP  
VGB = VEGETATION BUFFER (UNDISTURBED LAND INSIDE PC)  
FCD = FLOW CONTROL DITCH

#### NOTES:

- (1) Set Tanks High so pad Entrance & Tank Area Can Drain to Pad Basin
- (2) Gravel Pad 75' from Wells & Around Tanks and Separators
- (3) Pad Drains from Entrance to Pad Basin at a 3% to 5% slope
- (4) BMP Selection and Position may Change Depending on Actual Conditions Encountered During the Construction Process

SURVEYED BY: C.D.S. DATE SURVEYED: 06-25-10  
DRAWN BY: F.T.M. DATE DRAWN: 06-28-10  
SCALE: 1" = 60' REVISED:

Tri State  
Land Surveying, Inc.  
180 NORTH VERNAL AVE. VERNAL, UTAH 84078  
(435) 781-2501

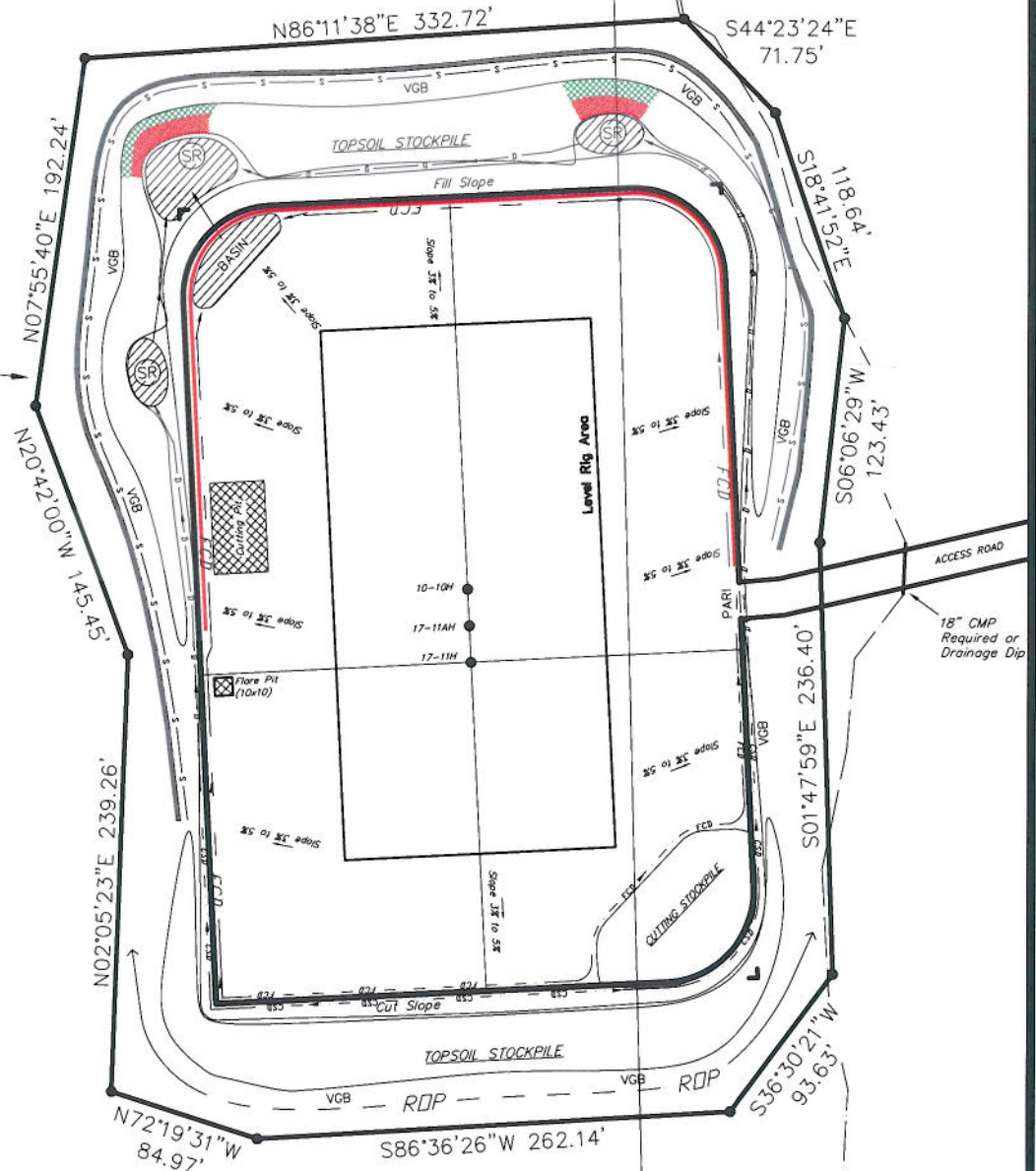
SHEET  
7  
OF 11



Section 16, T8S, R96W, 6th P.M.

1/4 Section Line

Boundary of  
Proposed Surface  
Disturbance ———



*Area of Proposed  
Surface Disturbance  
is 5.43 Acres*

SURVEYED BY: C.D.S.	DATE SURVEYED: 06-25-10
DRAWN BY: F.T.M.	DATE DRAWN: 06-28-10
SCALE: 1" = 100'	REVISED:

**Tri State** (435) 781-2501  
Land Surveying, Inc.  
180 NORTH VERNAL AVE. VERNAL, UTAH 84078

SHEET  
8  
OF 11