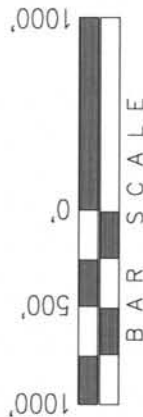


EXXON MOBIL CORPORATION

WELL LOCATION, FREEDOM UNIT 297-20B1,
LOCATED AS SHOWN IN THE NW 1/4 NW 1/4
OF SECTION 20, T2S, R97W, 6th P.M. RIO
BLANCO COUNTY, COLORADO.



 = SECTION CORNERS LOCATED

WELL LOCATION:
FREEDOM UNIT 297-20B1
ELEV. UNGRADED GROUND = 65'

$NO126'10"E - 5308.36' (Meas.)$

20

IMPROVEMENT NOTE:

See addendum to legal plat (sheet 1j) for existing improvements within 200' of the proposed well head.

No building, public road, above ground utility or railroad within 200' of the proposed well head.

BASIS OF BEARINGS & BASIS OF ELEVATION

BASIS OF BEARINGS IS A LINE BETWEEN MAGNOLIA & MEYERS TRIANGULATION
STATION GRID COORDINATES WHICH IS ASSUMED TO BEAR S82°36'07"E.

BASIS OF ELEVATION IS MAGNOLIA TRIANGULATION STATION LOCATED IN THE NW 1/4 OF SECTION 9, T2S, R96W, 6th P.M. REPORTED FROM THE NATIONAL GEODETIC SURVEY (NAVD 88). ELEVATION IS REPORTED AS BEING 7529 FEET.

NOTES:

1. Well footages are measured at right angles to the Section Lines.
2. Bearings are based on Global Positioning Satellite observations.
3. G.P.S. Operator: T. PETTY, (PDOP) = 2.5

THIS IS TO CERTIFY THAT THE ABOVE ~~ST~~ ^{DO} ~~NOT~~ ^{ARE} PREPARED FROM FIELD NOTES OF ACTUAL SURVEY ~~MADE BY ME~~ ^{MADE BY ME} OR UNDER MY SUPERVISION AND THAT ~~THE SAME~~ ^{THE SAME} ARE CORRECT TO THE BEST OF MY KNOWLEDGE AND BELIEF.

30125

REGISTERED LAND SURVEYOR
REGISTRATION NO. 11005
STATE OF COLORADO

TRI STATE LAND SURVEYING & CONSULTING

180 NORTH VERNAL AVE. - VERNAL, UTAH 84078
(435) 781-2501

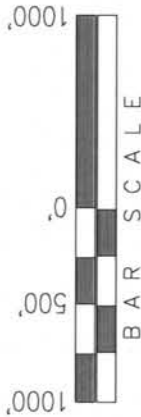
DATE SURVEYED: 1-18-06	SURVEYED BY: T.P.	SHEET 1a OF 8
DATE DRAWN: 3-15-06	DRAWN BY: R.V.C.	
REVISED: 08-22-06 D COX	SCALE: 1" = 1000'	

CO-NORTH NAD 83 (SURFACE LOCATION)	FROM SURFACE LOCATION TO NEAREST:
LATITUDE = 39°51'59.27" (39.866464)	TOWN/COMMUNITY: 24.3 MILES NE TO MEEKER
LONGITUDE = 108°18'52.51" (108.314587)	UNIT BOUNDARY: ±12.275' SLY TO BOUNDARY
STATE PLANE COORDINATES	UNIT BOUNDARY: ±196' WLY TO BOUNDARY
N: = 1206740.947 E: = 2210071.966	LEASE BOUNDARY: ±2,989' SLY TO BOUNDARY
CO-NORTH NAD 27 (SURFACE LOCATION)	LEASE BOUNDARY: ±196' WLY TO BOUNDARY
LATITUDE = 39°51'59.37" (39.866492)	EXISTING WELL: ±4,550' SELY TO #1 BRENNEN
LONGITUDE = 108°18'50.20" (108.313944)	
STATE PLANE COORDINATES	
N: = 206741.896 E: = 1210232.142	

T2S, R97W, 6th P.M.

EXXON MOBIL CORPORATION

TARGET BOTTOM HOLE, FREEDOM UNIT
297-20B1, LOCATED AS SHOWN IN THE SW
1/4 SW 1/4 OF SECTION 17, T2S, R97W, 6th
P.M., RIO BLANCO COUNTY, COLORADO.



SECTION CORNERS LOCATED

BASIS OF BEARINGS & BASIS OF ELEVATION

BASIS OF BEARINGS IS A LINE BETWEEN MAGNOLIA & MEYERS TRIANGULATION
STATION GRID COORDINATES WHICH IS ASSUMED TO BEAR S82°36'07"E.

BASIS OF ELEVATION IS MAGNOLIA TRIANGULATION STATION LOCATED IN THE
NW 1/4 OF SECTION 9, T2S, R96W, 6th P.M. REPORTED FROM THE NATIONAL
GEODETIC SURVEY (NAVD 88). ELEVATION IS REPORTED AS BEING 7529 FEET.

NOTES:

1. Well footages are measured at right angles to the
Section Lines.
2. Bearings are based on Global Positioning Satellite
observations.

THIS IS TO CERTIFY THAT THE ABOVE SURVEY WAS PREPARED
FROM FIELD NOTES OF ACTUAL SURVEY MADE BY ME OR
UNDER MY SUPERVISION AND THAT I AM A LICENSED SURVEYOR
AND CORRECT TO THE BEST OF MY KNOWLEDGE AND BELIEF.

30125

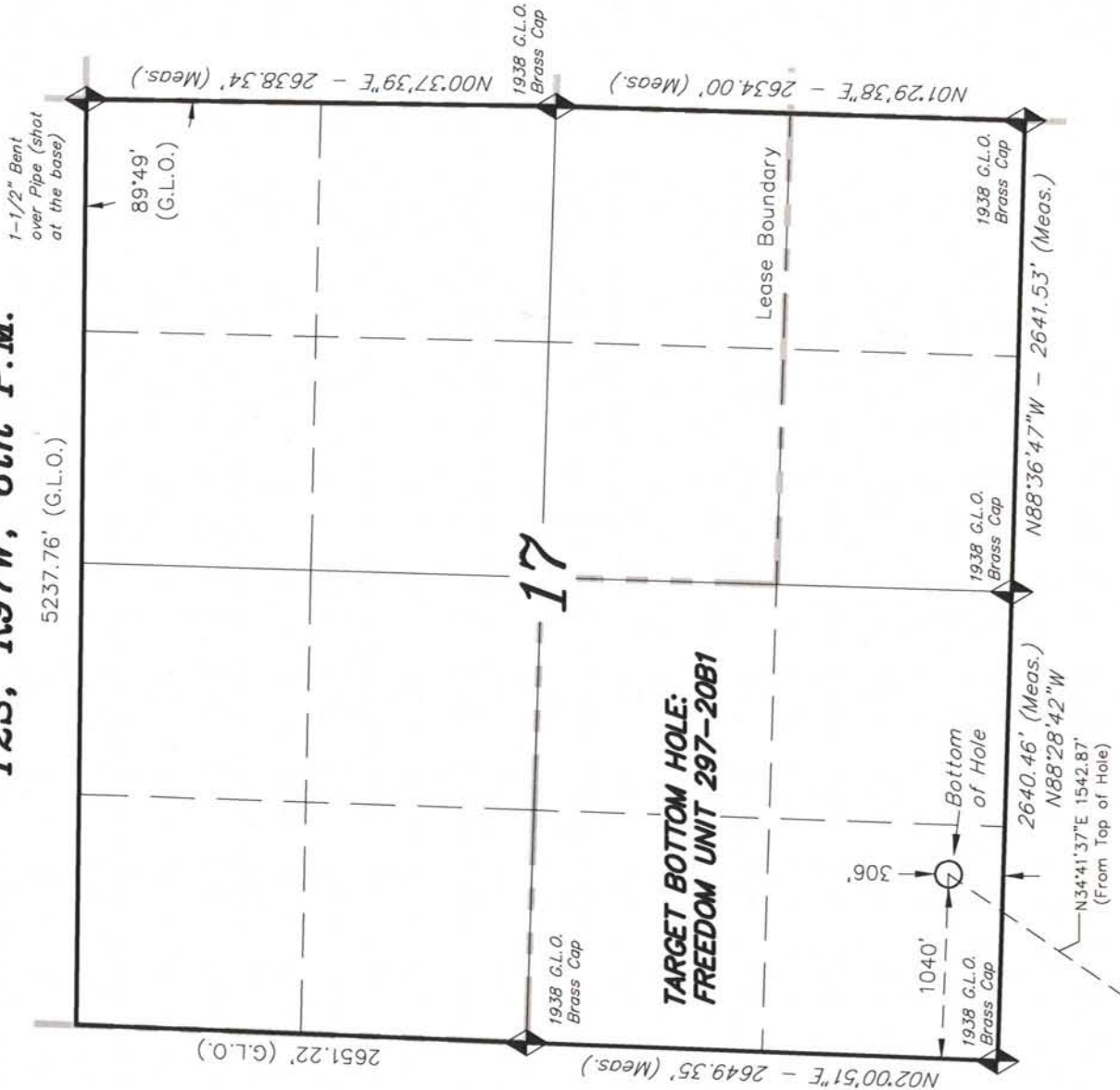
REGISTERED LAND SURVEYOR
REGISTRATION NO. 30125
STATE OF COLORADO

TRI STATE LAND SURVEYING & CONSULTING

180 NORTH VERNAL AVE. - VERNAL, UTAH 84078

(435) 781-2501

DATE SURVEYED: 1-18-06	SURVEYED BY: T.P.	SHEET
DATE DRAWN: 3-15-06	DRAWN BY: R.V.C.	1aa
REVISED: 08-22-06 D.COX	SCALE: 1" = 1000'	OF 8



CO-NORTH NAD 83 (BOTTOM HOLE)		FROM BOTTOM OF HOLE TO NEAREST:	
LATITUDE = 39°52'12.07" (39.870020)		UNIT BOUNDARY: ±13,569' SLY TO BOUNDARY	
LONGITUDE = 108°18'41.78" (108.311605)		UNIT BOUNDARY: ±1,040' WLY TO BOUNDARY	
STATE PLANE COORDINATES		LEASE BOUNDARY: ±2,341' NLY TO BOUNDARY	
N = 1208009.056	E = 2210949.838	LEASE BOUNDARY: ±1,040' WLY TO BOUNDARY	
CO-NORTH NAD 27 (BOTTOM HOLE)			
LATITUDE = 39°52'12.17" (39.870048)			
LONGITUDE = 108°18'39.46" (108.310961)			
STATE PLANE COORDINATES			
N = 208010.000	E = 1211110.000		