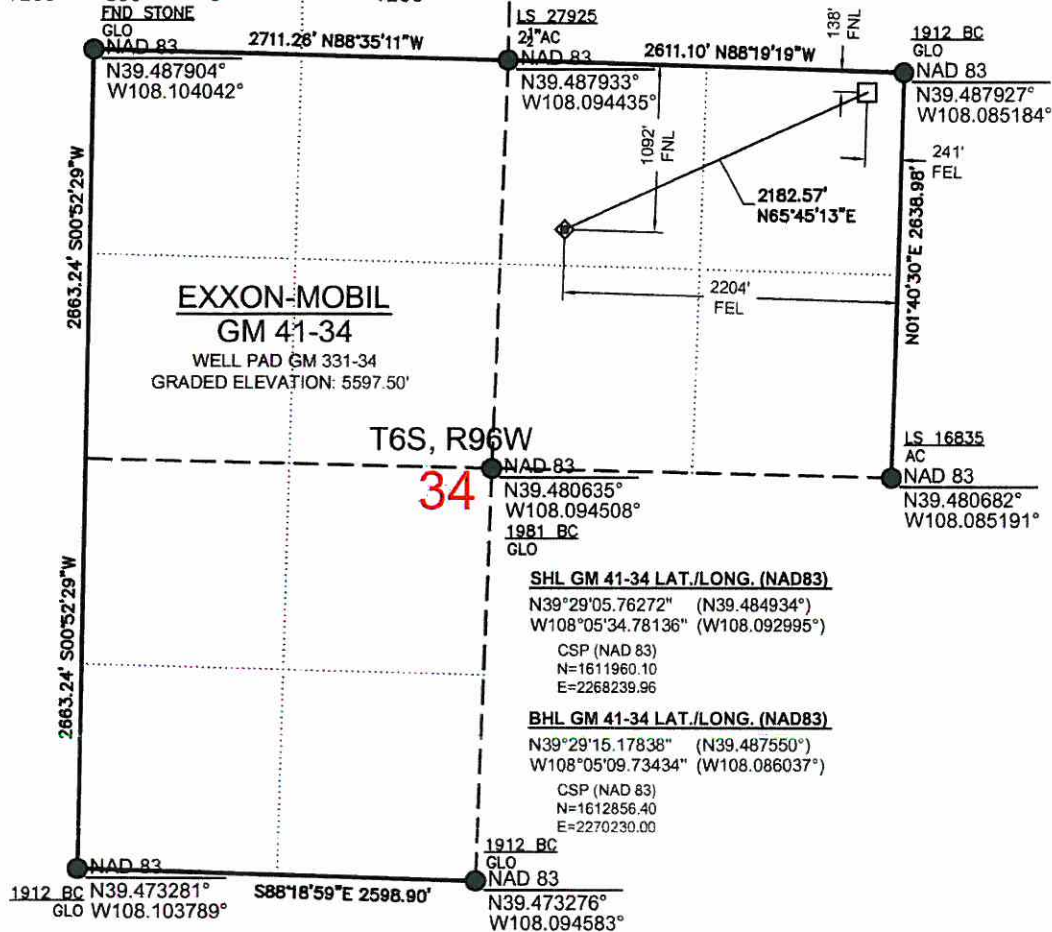


1" = 1200'

Scale in feet

1200 600 0 1200



EXXON-MOBIL GM 41-34

WELL PAD GM 331-34
GRADED ELEVATION: 5597.50'

T6S, R96W

34

1912 BC
GLO
NAD 83
N39.480635°
W108.094508°
1981 BC
GLO

SHL GM 41-34 LAT./LONG. (NAD83)

N39°29'05.76272" (N39.484934°)
W108°05'34.78136" (W108.092995°)

CSP (NAD 83)
N=1611960.10
E=2268239.96

BHL GM 41-34 LAT./LONG. (NAD83)

N39°29'15.17838" (N39.487550°)
W108°05'09.73434" (W108.086037°)

CSP (NAD 83)
N=1612856.40
E=2270230.00

1912 BC
GLO
NAD 83
N39.473276°
W108.094583°

LEGEND

- FOUND MONUMENT
- CALCULATED MONUMENT
- ◆ WELL LOCATION
- BOTTOM HOLE
- SHL - SURFACE HOLE LOCATION
- BHL - BOTTOM HOLE LOCATION
- BC - BRASS CAP
- GLO - GENERAL LAND OFFICE SURVEY

NOTES:

- 1) GPS OPERATOR Kurt Shepherd OBSERVED A PDOP OF 2.021
- 2) ALL GPS OBSERVATIONS ARE IN COMPLIANCE WITH COGCC RULE 215.
- 3) ALL DISTANCES ARE NAD83 COLORADO STATE PLANE, CENTRAL ZONE (SEA LEVEL)
- 4) THIS PLAT COMPLIES WITH COGCC RULE 303c.
- 5) NO VISIBLE IMPROVEMENTS WITHIN 400' OF WELL HEAD
- 6) VEGETATION: SCRUB OAK, SAGE, NATIVE SHRUBS & GRASSES
- 7) BOTTOM HOLE LOCATION COORDINATES PROVIDED BY WILLIAMS PRODUCTION, RMT

BASIS OF BEARING/DATUM

A GPS OBSERVATION FROM NGS PID
AJ3465 (FABER)

BASIS OF ELEVATION

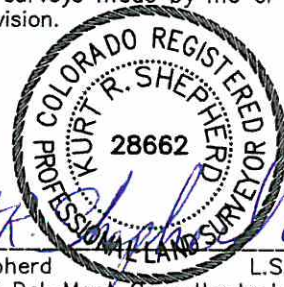
A GPS OBSERVATION FROM NGS PID
AJ3465 (FABER). SAID ELEVATION IS
5186.22'

DIMENSIONAL TIES

ALL DIMENSIONAL TIES TO SECTION
LINES ARE MEASURED AT A 90° ANGLE
TO THE SECTION LINE

SURVEYORS CERTIFICATE:

This is to certify that this exhibit was prepared
and location as shown was staked on the ground
from actual surveys made by me or under my
direct supervision.



Kurt R. Shepherd
On behalf of Del-Mont Consultants Inc.

DATE REVISED: 2010-06-17

DEL-MONT CONSULTANTS IS PROVIDING GRADING DESIGN FOR THIS PROJECT THAT PROVIDES DIMENSIONS AND VOLUME INFORMATION FOR CONSTRUCTION.



DEL-MONT CONSULTANTS, INC.
ENGINEERING • SURVEYING • PLANNING
121 Goreman Ave. • Montrose, CO 81401 • (970) 249-3251 • (970) 249-3242 fax
www.del-mont.com • survey@del-mont.com

DESIGNED BY

MGW

SCALE

1"=100'

CHECKED BY

KS

FILE NAME

10030-GM_331-34-SITE



NW1/4 NE1/4 S34, T6S, R96W, 6TH P.M.

WELL LOCATION PLAT
GM 41-34

WELL PAD GM 331-34

GARFIELD COUNTY, CO

WILLIAMS PRODUCTION, RMT

DMC JOB NO. 10030

DATE ISSUED 2008-12-10

DATE SURVEYED 2008-11-19

PLAT

1 of 9