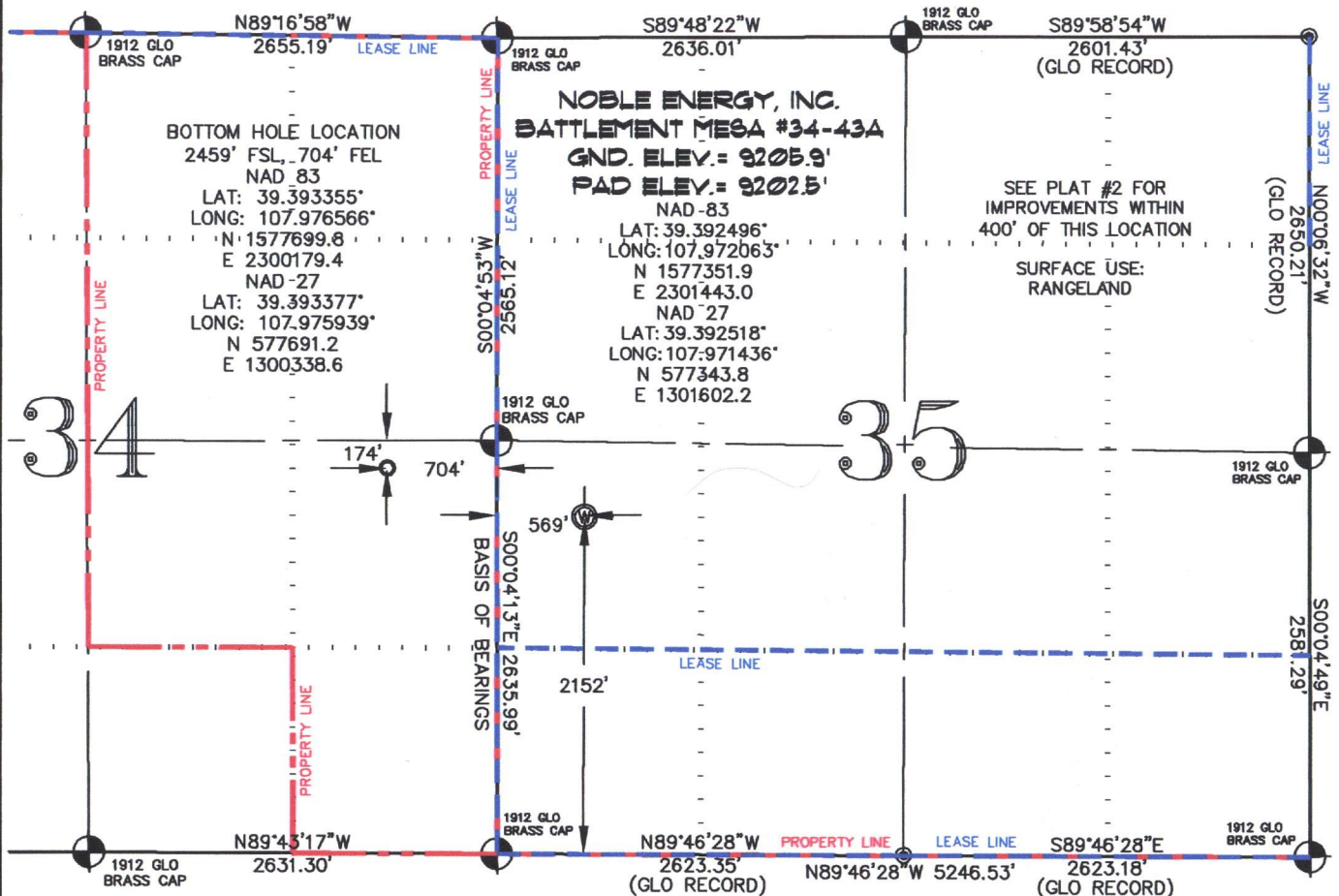


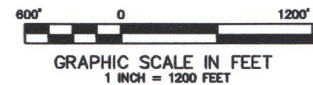
SEC. 35, T. 7 S., R. 95 W. OF THE 6TH P.M.

BM 35L
PAD LOCATION



-LEGEND-

- SECTION CORNER LOCATION BASED ON GLO RECORD INFORMATION
- ⊙ FIELD SURVEYED SECTION CORNER LOCATIONS
- ⊙ FIELD SURVEYED WELL LOCATION
- ⊙ CALCULATED BOTTOM HOLE LOCATION



THIS WELL LOCATION PLAT WAS PREPARED FOR NOBLE ENERGY INC. TO LOCATE THE BATTLEMENT MESA #34-43A WELL, 2152 FEET FROM THE SOUTH LINE AND 569 FEET FROM THE WEST LINE IN THE NW1/4 SW1/4 OF SECTION 35, T. 7 S., R. 95 W. OF THE 6TH P.M. GARFIELD COUNTY, COLORADO.

REFERENCE NOTES

- 1) T. 7 S., R. 95 W., 6TH P.M. GLO PLAT.
- 2) U.S.G.S. QUAD: PARACHUTE, CO
- 3) ELEVATIONS BASED ON N.A.V.D. 1988
- 4) LATITUDES AND LONGITUDES ARE BASED ON NAD 83, COLORADO CENTRAL ZONE.
- 5) GPS OPERATOR IVAN MARTIN, OBSERVED A PDOP OF 2.8.
- 6) ALL GPS OBSERVATIONS ARE IN COMPLIANCE WITH COGCC RULE NO. 215.
- 7) SURFACE AND BOTTOM HOLE LOCATIONS ARE MEASURED 90° FROM SECTION LINES.

SURVEYOR'S CERTIFICATE

I, George R. Bauer: a Professional Land Surveyor in the State of Colorado do hereby certify that this Survey was made under my direct supervision, and that this Plat represents said Survey.



COLORADO P.L.S. 27925



CONSTRUCTION SURVEYS, INC.
0012 SUNRISE BLVD.
SILT, CO 81652
(970)876-5753

VIEW: 1A

SURVEYED: 10/06/09	SCALE: 1" = 1200'
DRAFTED: 01/18/10	DWG: Noble\2006\BM35L
CHECKED: 01/19/10	SHEET: 1 of 10