

1625 Broadway  
Suite 2000  
Denver, CO 80202  
  
Tel: 303.228.4000  
Fax: 303.228.4280  
www.nobleenergyinc.com



July 15, 2010

Colorado Oil and Gas Conservation Commission  
The Chancery Building  
1120 Lincoln Street, Suite 801  
Denver, CO 80203

Attn: Mr. David Neslin, Director

RE: RAY H12-24D  
Codell/Niobrara/J Sand New Drill  
Township 3 North, Range 65 West, 6th P.M.  
Section 12: SE/4SW/4: 1120' FSL & 1932' FWL (Surface Location)  
Section 12: NE/4SW/4: 1634' FSL & 2456' FWL (Bottom Hole Location)  
Weld County, Colorado

Mr. Neslin:

Noble Energy, Inc. ("NEI") is planning to drill the captioned boundary well in accordance with the provisions of COGCC Rule 318A.e.

NEI's proposed wellbore spacing unit consists of the E/SW/4, W/2SE/4 of Section 12, T3N, R65W, creating a 160-acre wellbore spacing unit. NEI is the only owner within the proposed wellbore spacing unit, therefore NEI hereby attests that no notice letters are required under COGCC Rule 318A.e.(6).

Enclosed are copies of the following documents to assist you in your review and approval of NEI's proposed APD for the captioned well:

- Plat illustrating the proposed wellbore spacing unit and number of Codell/Niobrara/J Sand wells located within the existing 160-acre governmental quarter section (SW/4) to be less than eight (8) in accordance with COGCC Rule 318A.f.
- Plat illustrating proposed wellbore spacing unit on existing location plat.

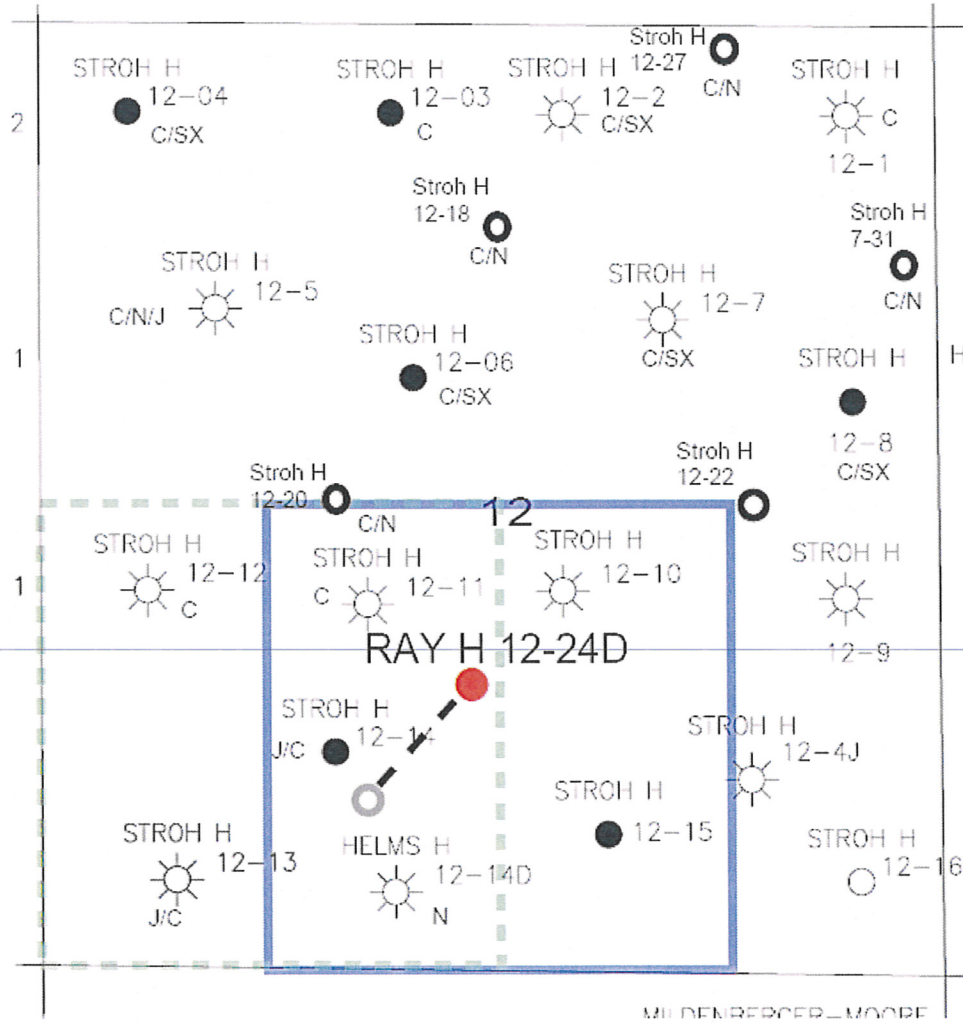
Thank you for your attention to the enclosed. NEI respectfully requests that the COGCC review the enclosed information and approve the Application for Permit to Drill the captioned well.

Sincerely,

A handwritten signature in blue ink that reads 'Mari Clark'. The signature is fluid and cursive, with a long horizontal stroke extending to the right.

Mari Clark  
Regulatory Analyst II  
Noble Energy Inc.

**Ray H 12-24D**  
**NESW, Sec 12, T3N, R65W**



**LEGEND**



Proposed 160 acre Spacing Unit



Bottom Hole Located NESW, Sec 12, T3N, R65W

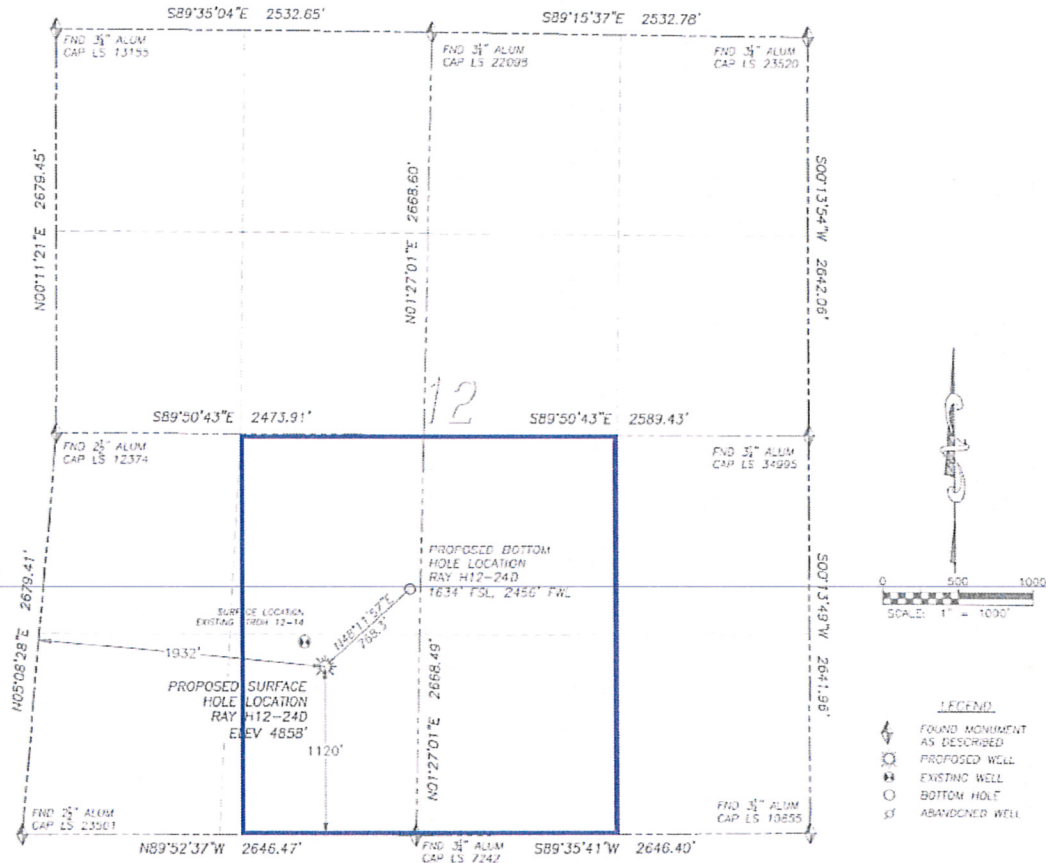
The governmental  $\frac{1}{4}$  Section has less than 8 bottom hole wells producing from the Codell, Niobrara, & J-Sand Formations.

# PROPOSED 318Ae SPACING UNIT

DALEY LAND SURVEYING, INC. PARKER, CO. 80134 303 953 9841

## WELL LOCATION CERTIFICATE RAY H12-24D

SECTION 12, TOWNSHIP 3 NORTH, RANGE 65 WEST OF THE 6TH PRINCIPAL MERIDIAN



### NAD 83 LATITUDE AND LONGITUDE

#### RAY H12-24D SURFACE HOLE:

LATITUDE: N40.23552°  
LONGITUDE: W104.61424°  
ELEVATION: 4858'  
PGOP: 1.9  
1120' FSL, 1932' FWL

#### BOTTOM HOLE:

LATITUDE: N40.23697°  
LONGITUDE: W104.61217°  
1634' FSL, 2456' FWL

#### NEAREST EXISTING WELL:

STROH H12-14 SURFACE HOLE  
LATITUDE: N40.23596°  
LONGITUDE: W104.61473°  
ELEVATION: 4857'  
212' NORTHWEST

#### QUARTER/QUARTER: SE4/SW4

NEAREST APPARENT PROPERTY LINE:  
215'± NORTH

IN ACCORDANCE WITH A REQUEST FROM BRIAN DeROSE OF NOBLE ENERGY INC., DALEY LAND SURVEYING, INC. HAS DETERMINED THE SURFACE LOCATION OF THE RAY H12-24D WELL TO BE 1120' FSL, 1932' FWL, AS MEASURED AT NINETY (90) DEGREES FROM THE SECTION LINES OF SECTION 12, TOWNSHIP 3 NORTH, RANGE 65 WEST OF THE 6TH PRINCIPAL MERIDIAN, WELD COUNTY, COLORADO.

THE BOTTOM HOLE LOCATION, PROVIDED BY THE CLIENT, IS TO BE 1634' FSL, 2456' FWL.

I HEREBY CERTIFY THAT THIS WELL LOCATION CERTIFICATE WAS PREPARED BY ME OR UNDER MY DIRECT SUPERVISION, THAT THE WORK WAS COMPLETED ON 5/26/2010 FOR AND ON BEHALF OF NOBLE ENERGY, INC., AND THAT THIS MAP DOES NOT REPRESENT A BOUNDARY SURVEY, IT IS NOT A LAND SURVEY PLAT OR AN IMPROVEMENT SURVEY PLAT AND IT IS NOT TO BE RELIED UPON FOR THE ESTABLISHMENT OF FENCE, BUILDING OR OTHER FUTURE IMPROVEMENT LINES.

#### NOTES:

- 1) BEARINGS FOR THIS MAP ARE ASSUMED AND BASED UPON GPS OBSERVATIONS MADE BETWEEN MONUMENTS LOCATED AT THE SOUTHWEST CORNER AND WEST QUARTER CORNER OF SECTION 12, T.3N., R.65W.
- 2) HORIZONTAL DATUM IS NAD83.
- 3) VERTICAL DATUM IS NAVD83. ELEVATIONS ARE DERIVED FROM GPS OBSERVATIONS PROCESSED THROUGH OPUS, UTILIZING THE GEODIGS MODEL.
- 4) SEE VISIBLE IMPROVEMENTS EXHIBIT FOR VISIBLE IMPROVEMENTS WITHIN 600' OF PROPOSED SURFACE HOLE LOCATION.
- 5) SURFACE USE: OPEN RANGE LAND.

NOTICE: According to Colorado law you MUST commence any legal action based upon any defect in this W.L.C. within three years after you first discover such defect. It is no event may any action based upon any such defect in this W.L.C. be commenced more than six years from the date of the notification shown herein.



FOR AND ON BEHALF OF:  
DALEY LAND SURVEYING, INC.,  
Robert Daley, PLS 35597