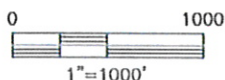
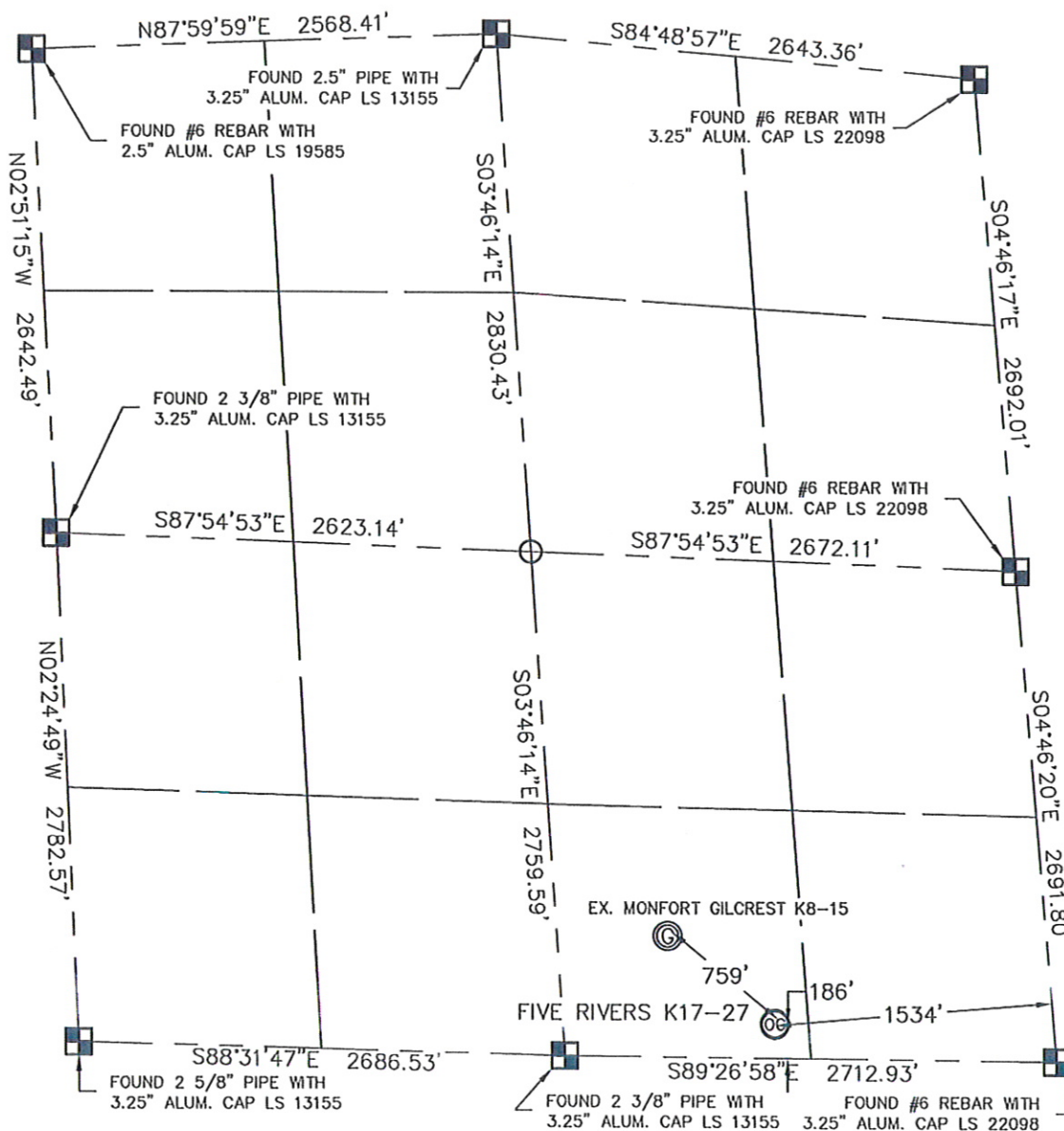


WELL LOCATION CERTIFICATE

THIS MAP DOES NOT REPRESENT A BOUNDARY SURVEY

SECTION: 8
TOWNSHIP: 4N
RANGE: 66WIn accordance with a request from JOE MARTIN with Noble Energy Inc.King Surveyors Inc. has determined the surface location of the FIVE RIVERS K17-27 to be 186' from the SOUTH line and 1534' from the EAST line as measured at right angles from the section line of Section 8, Township 4 North, Range 66 West of the Sixth Principal Meridian, County of Weld, State of Colorado.I hereby state that this Well Location Certificate was prepared by me, or under my direct supervision, that the fieldwork was completed on 3-1-10, for and on behalf of Noble Energy Inc. That this is not a Land Survey Plat or an Improvement Survey Plat, and that it is not to be relied upon for establishment of fence, building, or other future improvement lines.

NOTE:

- 1) Bearings shown are Grid Bearings of the Colorado State Plane Coordinate System, North Zone, North American Datum 1983/2007. The lineal dimensions as contained herein are based upon the "U.S. Survey Foot."
- 2) Ground elevations are based on an observed GPS elevation (NAVD 1988 DATUM).
- 3) NEAREST EXISTING WELL: MONFORT GILCREST K8-15 759'
- 4) IMPROVEMENTS: See VISIBLE IMPROVEMENTS exhibit for all visible improvements within 400' of well head.
- 5) SURFACE USE: PASTURE



SURFACE LOCATION

LATITUDE: 40.319507N
 LONGITUDE: 104.797547W
 PDOP: 1.1
 ELEV: 4704
 1/4, 1/4: SW 1/4 SE 1/4
 NEAREST PROPERTY LINE: 186' SOUTH

NOTE

According to Colorado law, you must commence any legal action based upon any defect in this W.L.C. within three years after you discover such defect. In no event, may any action based upon any defect in this survey be commenced more than ten years after the date of the certificate shown hereon. (13-80-105 C.R.S.)

LEGEND

-  = ALIQUOT MONUMENT AS DESCRIBED
 = CALCULATED POSITION

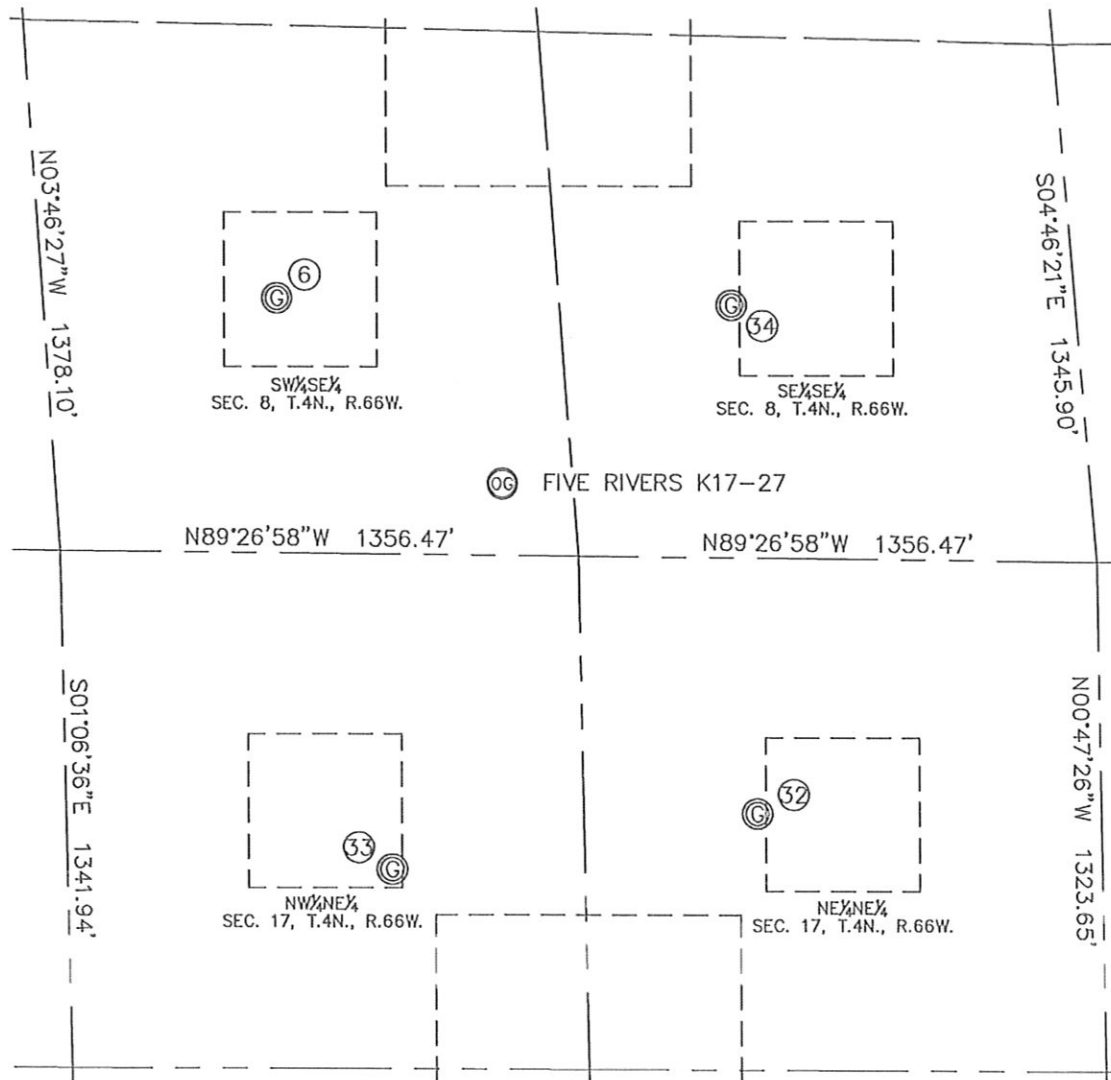
STEVEN A. LUND
 2010
 8-10-10

Steven A. Lund on behalf of King Surveyors, Inc.
 Licensed Land Surveyor, No. 34995
 State of Colorado

PROJECT#: 2010055

KING SURVEYORS, INC. 650 E. GARDEN DR. WINDSOR, CO 80550
SITE SKETCH

SECTION: 8
 TOWNSHIP: 4N
 RANGE: 66W



⑥
 MONFORT GILCREST K 8-15
 SW 1/4 SE 1/4
 660' FSL
 2080' FEL
 LAT-40.32083°N
 LONG-104.79963°W
 PDOP: 1.9
 ELEV: 4704'

③②
 FRONT RANGE 1-17
 NE 1/4 NE 1/4
 665' FNL
 899' FEL
 LAT-40.31713°N
 LONG-104.79518°W
 PDOP: 2.5
 ELEV: 4734'

③③
 TIGGER K17-2
 NW 1/4 NE 1/4
 819' FNL
 1858' FEL
 LAT-40.31675°N
 LONG-104.79861°W
 PDOP: 1.6
 ELEV: 4706'

③④
 MONFORT GILCREST K8-16
 SE 1/4 SE 1/4
 655' FSL
 895' FEL
 LAT-40.32076°N
 LONG-104.79537°W
 PDOP: 1.7
 ELEV: 4703'

